

06-16-2017 LETTING ITEM 037

STATE OF ILLINOIS
DEPARTMENT OF TRANSPORTATION

| F.A.I. RTE. | SECTION | COUNTY | TOTAL SHEETS | SHEET NO. |
|-------------|------------------------|----------|--------------------|-----------|
| 72 | D7 WEED CONTROL 2017-2 | MACON | 4 | 1 |
| | | ILLINOIS | CONTRACT NO. 74798 | |

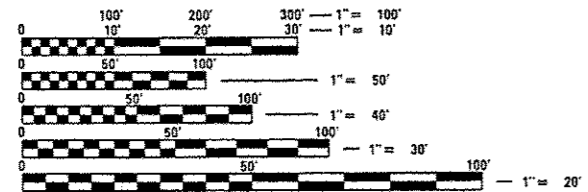
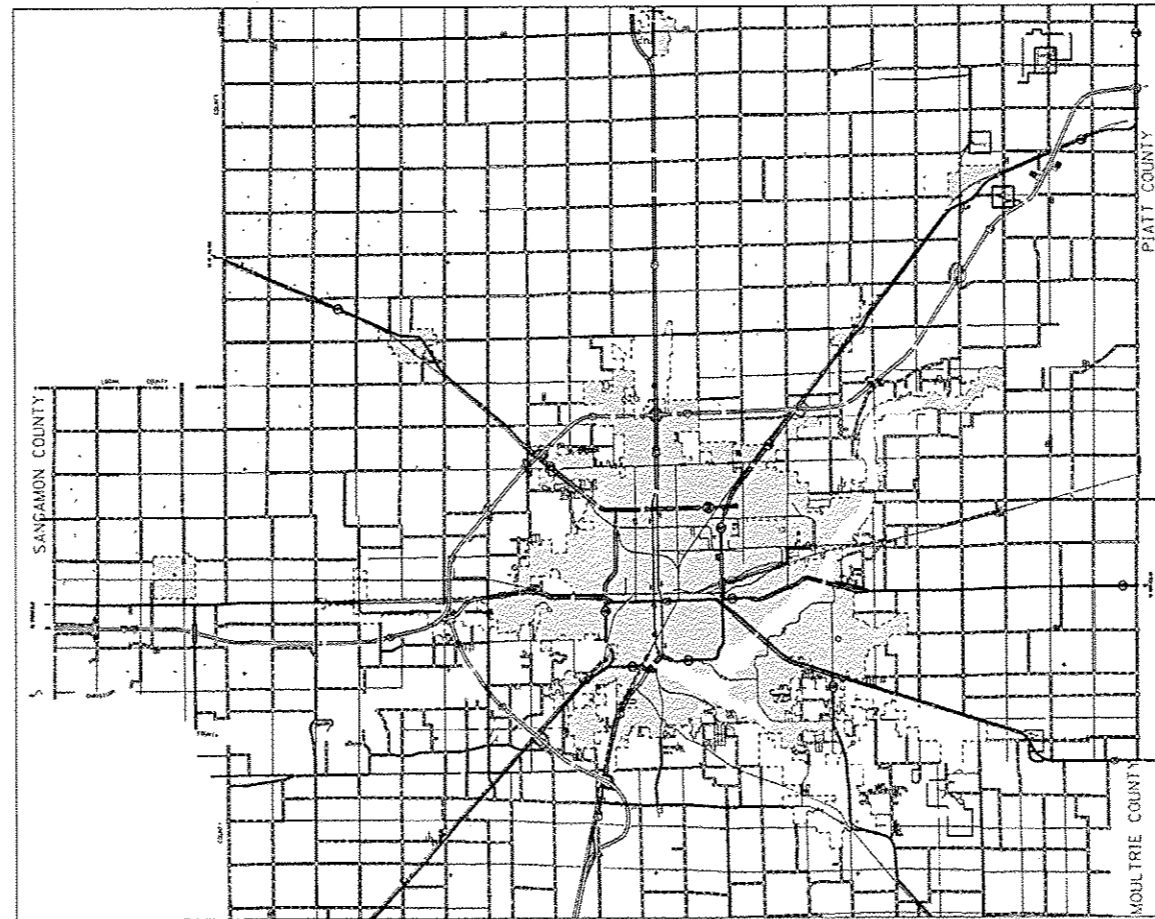
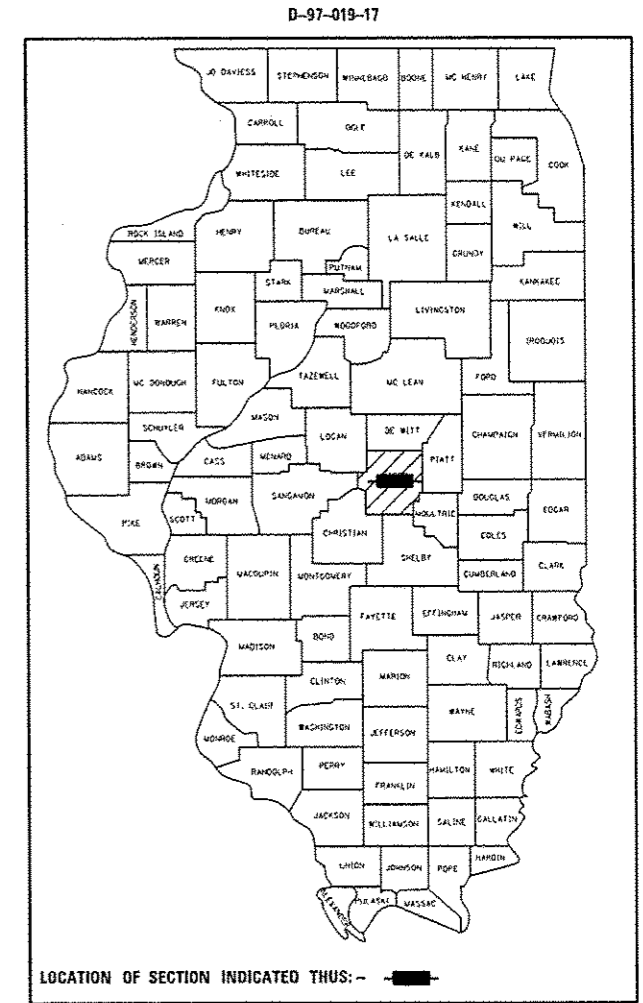
FOR INDEX OF SHEETS, SEE SHEET NO. 2

PROPOSED HIGHWAY PLANS

FAI ROUTE 72 (1-72)
SECTION D7 WEED CONTROL 2017-2

WEED CONTROL SPRAYING
MACON COUNTY

C-97-049-17



FULL SIZE PLANS HAVE BEEN PREPARED USING STANDARD ENGINEERING SCALES. REDUCED SIZED PLANS WILL NOT CONFORM TO STANDARD SCALES. IN MAKING MEASUREMENTS ON REDUCED PLANS, THE ABOVE SCALES MAY BE USED.

J.U.L.I.E.
JOINT UTILITY LOCATION INFORMATION FOR EXCAVATION
1-800-892-0123
OR 811

PROJECT ENGINEER TOM RONAN
PROJECT MANAGER TOM RONAN
PHONE: (217)-342-8320
CONTRACT NO. 74798

STATE OF ILLINOIS
DEPARTMENT OF TRANSPORTATION

SUBMITTED March 15 20 17
Jeffrey M. South
REGIONAL ENGINEER

May 12 20 17
Matthew M. Addis
ENGINEER OF DESIGN AND ENVIRONMENT

May 12 20 17
Kevin A. [Signature]
DIRECTOR OF PROGRAM DEVELOPMENT

PRINTED BY THE AUTHORITY
OF THE STATE OF ILLINOIS

INDEX OF SHEETS

| SHEET NO. | TITLE |
|-----------|--|
| 1 | COVER SHEET |
| 2 | INDEX OF SHEETS, HIGHWAY STANDARDS, SPRAY LIMITS |
| 3 | SUMMARY OF QUANTITIES |
| 4 | LOCATION MAP |

THE FOLLOWING STANDARDS ARE A PART OF THESE PLANS AND ARE INCLUDED AFTER SHEET NO. 4:

| | |
|-----------|---|
| 701101-05 | OFF-ROAD OPERATIONS, MULTILANE, 15' TO 24" FROM PAVEMENT EDGE |
| 701106-02 | OFF-ROAD OPERATIONS, MULTILANE, MORE THAN 15' AWAY |
| 701426-09 | LANE CLOSURE, MULTILANE, INTERMITTENT OR MOVING OPERATION |
| 701901-06 | TRAFFIC CONTROL DEVICES |

SPRAY LIMITS

| ROUTE | COUNTY | MILE POST | DESCRIPTION | MILES |
|-------|--------|------------|---|-------|
| I-72 | MACON | 125 TO 156 | MACON/SANGAMON CO. LINE TO MACON/PIATT CO. LINE | 31 |

NOTES

WEED SPRAY SHALL BE APPLIED ON AREAS ALONG I-72 AS DIRECTED BY THE ROADSIDE MAINTENANCE TECHNICIAN. IT IS THE INTENT TO USE THE ENTIRE QUANTITY WITHIN THE MILEPOSTS SHOWN.

APPLICATION SHALL BE IN THE MEDIAN AND FROM EDGE OF SHOULDER TO THE RIGHT-OF-WAY LINE.

THE RURAL/URBAN SPLITS FOR THIS CONTRACT ARE AS FOLLOWS:

MILE MARKER 0.00 TO MILE MARKER 7.09: RURAL
 MILE MARKER 7.09 TO MILE MARKER 21.11: URBAN
 MILE MARKER 21.11 TO MILE MARKER 31.56: RURAL

| | | | | | | | | | | | |
|---|-------------------------------|------------|-----------|---|---|--------------------|------------------------|--------|--------------|---------------------------|--|
| FILE NAME = | USER NAME = steffennk | DESIGNED - | REVISED - | STATE OF ILLINOIS DEPARTMENT OF TRANSPORTATION | INDEX OF SHEETS AND SPRAY LIMITS | F.A.I. RTE. | SECTION | COUNTY | TOTAL SHEETS | SHEET NO. | |
| pw\illinois\2017\INTEG\Illinois.gov\PI\DOT\Documents\1007\Office\District 7\Projects\747\BRANN\CAD\Sheets\0774298-shi-gonneta | BRANN | REVISIONS | REVISED - | | | 72 | 07 WEED CONTROL 2017-2 | MACON | 4 | 2 | |
| Default | PLOT SCALE = 100.0000' / 1" = | CHECKED - | REVISED - | | | CONTRACT NO. 74798 | | | | | |
| | PLOT DATE = 3/20/2017 | DATE - | REVISED - | | | SCALE: | SHEET 1 OF 1 SHEETS | STA. | TO STA. | ILLINOIS FED. AID PROJECT | |

100 %
STATE

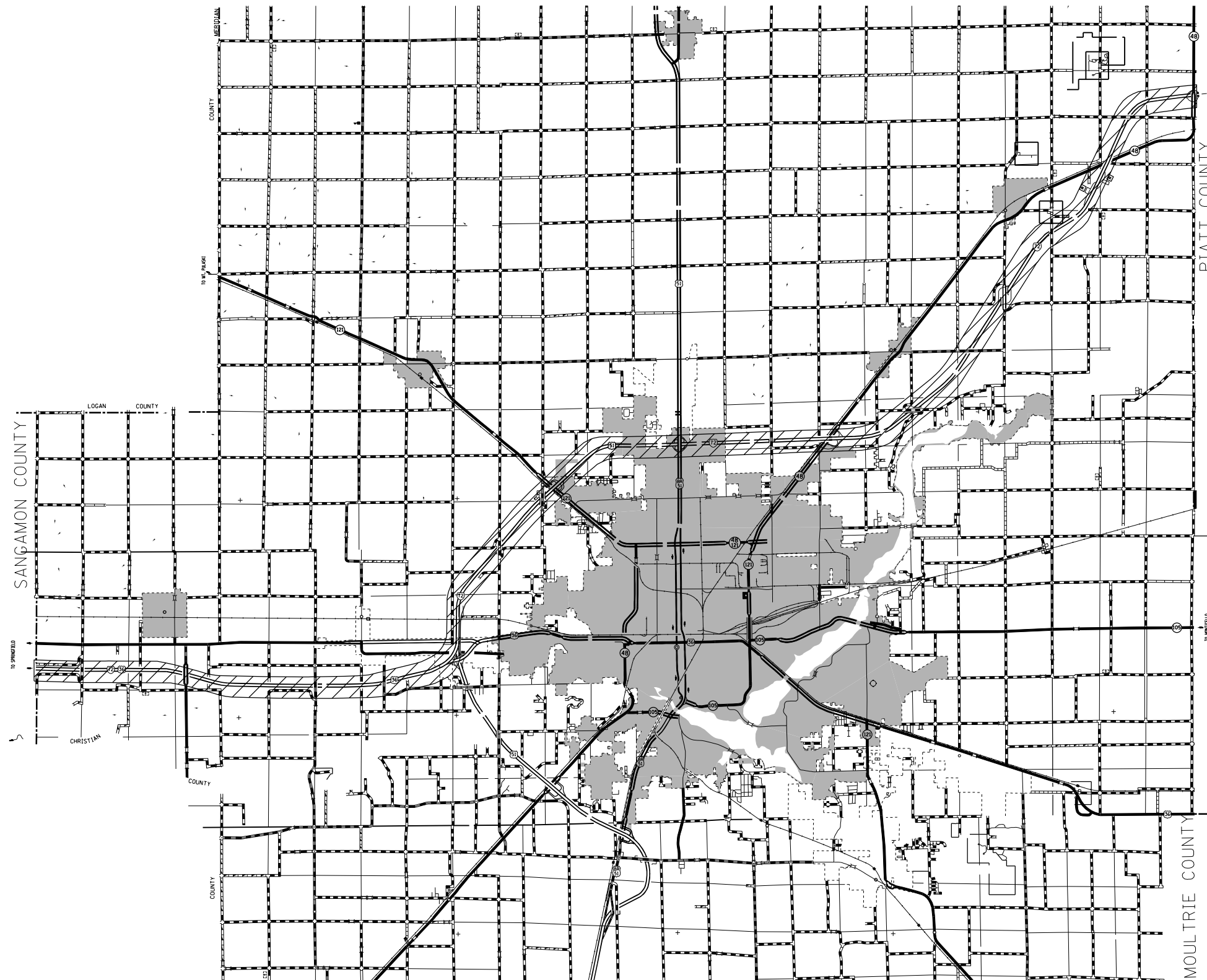
| SUMMARY OF QUANTITIES | | | TOTAL QUANTITIES | CONSTRUCTION TYPE CODE | |
|-----------------------|---------------------|--------|------------------|------------------------|--------------|
| CODE NO | ITEM | UNIT | | 0031 RURAL ✓ | 0031 URBAN ✓ |
| 67100100 | MOBILIZATION | LSUM | 1 | 0.55 | 0.45 |
| K0029636 | ESCORT XP HERBICIDE | POUND | 105 | 58 | 47 |
| X0325947 | MILESTONE VM | GALLON | 85 | 47 | 38 |
| | | | | | |
| | | | | | |
| | | | | | |
| | | | | | |
| | | | | | |
| | | | | | |
| | | | | | |
| | | | | | |
| | | | | | |
| | | | | | |
| | | | | | |
| | | | | | |
| | | | | | |
| | | | | | |
| | | | | | |
| | | | | | |
| | | | | | |
| | | | | | |
| | | | | | |
| | | | | | |
| | | | | | |
| | | | | | |
| | | | | | |
| | | | | | |
| | | | | | |
| | | | | | |
| | | | | | |
| | | | | | |
| | | | | | |

308 71 2017

| | | | | | | | | | | | | |
|--|----------------------|------------|-----------|---|--|------------------------------|--|--------------|------------------------|---------------------------|--------------|-----------|
| FILE NAME = | USER NAME = staffemk | DESIGNED - | REVISED - | STATE OF ILLINOIS DEPARTMENT OF TRANSPORTATION | | SUMMARY OF QUANTITIES | | P.A.L. RTE. | SECTION | COUNTY | TOTAL SHEETS | SHEET NO. |
| Default | | CHECKED - | REVISED - | | | | | 72 | 07 WEED CONTROL 2017-2 | MACON | 4 | 3 |
| | | DATE - | REVISED - | SCALE: | | SHEET 1 OF 1 SHEETS | | STA. TO STA. | | ILLINOIS FED. AID PROJECT | | |
| P:\IL\004E\BID\INTEG\Illinois.gov\FWIDOT\Documents\DOT Offices\District 7\Projects\747 | | DRAWING | | CONTRACT NO. 74798 | | CONTRACT NO. 74798 | | | | | | |



MACON COUNTY LOCATION MAP



| | | | |
|--|------------------------------|------------|-----------|
| FILE NAME = | USER NAME = steffenmk | DESIGNED - | REVISED - |
| p:\11\084EBIDINTEG.illinois.gov\PIWIDOT\Documents\IDOT Offices\District 7\Projects\74798\DRAWING\CAD\sheets\D774798-sht-plan.dgn | | DRAWN - | REVISED - |
| Default | PLOT SCALE = 100.0000' / in. | CHECKED - | REVISED - |
| | PLOT DATE = 3/20/2017 | DATE - | REVISED - |

**STATE OF ILLINOIS
DEPARTMENT OF TRANSPORTATION**

MACON COUNTY LOCATION MAP

SCALE: SHEET 1 OF 1 SHEETS STA. TO STA.

| F.A.I. RTE. | SECTION | COUNTY | TOTAL SHEETS | SHEET NO. |
|---------------------------|------------------------|--------|--------------|-----------|
| 72 | D7 WEED CONTROL 2017-2 | MACON | 4 | 4 |
| CONTRACT NO. 74798 | | | | |
| ILLINOIS FED. AID PROJECT | | | | |