

STATE OF ILLINOIS  
DEPARTMENT OF TRANSPORTATION

F.A.I. RTE.	SECTION	COUNTY	TOTAL SHEETS	SHEET NO.
57	D9 BRIDGE REPAIR 2017-3	ALEXANDER	17	1
		ILLINOIS	CONTRACT NO. 78553	

FOR INDEX OF SHEETS, SEE SHEET NO. 2  
FOR SUMMARY OF QUANTITIES, SEE SHEET NO. 3  
FOR STRUCTURAL PAVEMENT DESIGN INFORMATION, SEE SHEET NO. N/A

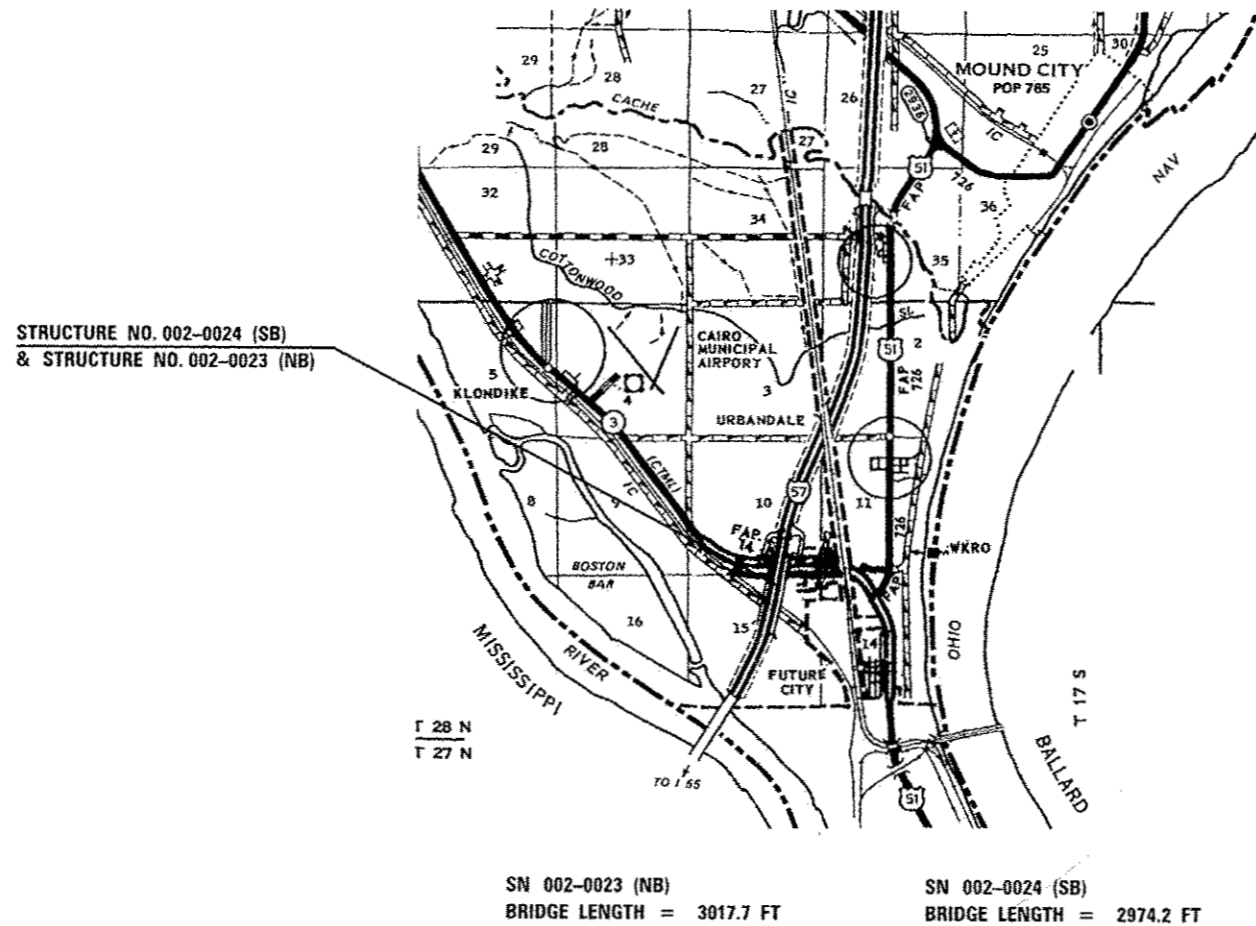
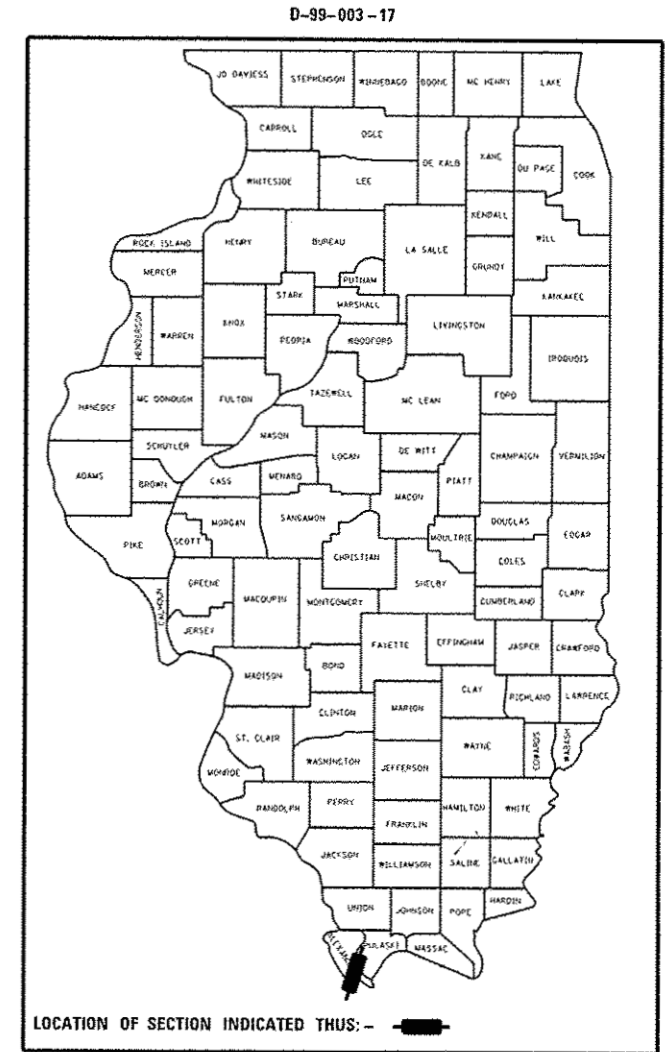
**PROPOSED  
HIGHWAY PLANS**

F.A.I. ROUTE 57 (I-57)  
SECTION D9 BRIDGE REPAIR 2017-3

**BRIDGE CRACK REPAIR  
ALEXANDER COUNTY**

**BRIDGE**  
SN. 002-0023/24  
I-57 2016 ADT=6250 ONE-WAY, 45% TRUCKS  
TOWNSHIP- COUNTY UNIT ROAD DISTRICT

C-99-003-17



DESIGN DESIGNATION : N/A  
COORDINATE SYSTEM : N/A  
POSTED SPEED : 70 MPH

J.U.L.I.E.  
JOINT UTILITY LOCATION INFORMATION FOR EXCAVATION  
1-800-892-0123  
OR 811

PROJECT ENGINEER: DAVID PICHE 618-351-5227  
PROJECT DESIGNER: DAVID HOLLMANN 618-351-5228

CONTRACT NO. 78553

STATE OF ILLINOIS  
DEPARTMENT OF TRANSPORTATION

SUBMITTED March 15 2017  
Jeffrey R. Keim  
REGION FIVE ENGINEER

May 12 2017  
Karen M. Addis  
ENGINEER OF DESIGN AND ENVIRONMENT

May 12 2017  
Kevin A. Allen  
DIRECTOR OF PROGRAM DEVELOPMENT

**PRINTED BY THE AUTHORITY  
OF THE STATE OF ILLINOIS**

**INDEX OF SHEETS**

SHEET NO.	DESCRIPTION
1	COVER SHEET
2	INDEX OF SHEETS, HIGHWAY STANDARDS, AND GENERAL NOTES
3	SUMMARY OF QUANTITIES
4-13	REPAIR PLANS
14-15	REPAIR DETAILS
16-17	EXISTING RIGHT OF WAY SHEET

**GENERAL NOTES**

IN ADDITION TO THE REQUIREMENTS OF ARTICLE 107.16 THE CONTRACTOR SHALL PROTECT THE SURFACE OF ALL BRIDGE DECKS AND BRIDGE APPROACH PAVEMENTS IN A MANNER SATISFACTORY TO THE ENGINEER BEFORE ANY EQUIPMENT IS ALLOWED TO CROSS THE STRUCTURE. PROTECTION SHALL BE PROVIDED FOR ALL EQUIPMENT AS DEFINED IN ARTICLE 101.16 REGARDLESS IF TRACK MOUNTED OR WHEELED.

PLAN DIMENSIONS AND DETAILS RELATIVE TO EXISTING PLANS ARE SUBJECT TO ROUTINE VARIATIONS. THE CONTRACTOR SHALL FIELD VERIFY EXISTING DIMENSIONS AND DETAILS AFFECTING NEW CONSTRUCTION AND MAKE NECESSARY APPROVED ADJUSTMENTS PRIOR TO CONSTRUCTION OR ORDERING OF MATERIALS. SUCH VARIATIONS SHALL NOT BE CAUSE FOR ADDITIONAL COMPENSATION FOR A CHANGE IN SCOPE OF THE WORK, HOWEVER, THE CONTRACTOR WILL BE PAID FOR THE QUANTITY ACTUALLY FURNISHED AT THE UNIT PRICE BID FOR THE WORK.

REVISE STANDARD SPECIFICATIONS ARTICLE 107.12, PARAGRAPH 5, LAST SENTENCE TO READ: "ALL OTHER RAILROAD FLAGGER COSTS WILL BE INCURRED BY THE DEPARTMENT ACCORDING TO ARTICLE 109.05."

A CONTRACTOR'S RIGHT-OF-ENTRY PERMIT IS REQUIRED BEFORE ANY WORK CAN COMMENCE ON RAILROAD PROPERTY. THE COST TO OBTAIN THIS PERMIT SHALL BE CONSIDERED INCIDENTAL TO THE PROJECT.

COMMITMENTS: NONE AS OF MARCH 24, 2017.

**ILLINOIS HIGHWAY STANDARDS**

701101-05	OFF-ROAD OPERATIONS, MULTILANE, 15' TO 24" FROM PAVEMENT EDGE
701106-02	OFF-ROAD OPERATIONS, MULTILANE, MORE THAN 15' AWAY
701400-09	APPROACH TO LANE CLOSURE, FREEWAY/EXPRESSWAY
701401-10	LANE CLOSURE FREEWAY/EXPRESSWAY
701411-09	LANE CLOSURE, MULTILANE, AT ENTRANCE OR EXIT RAMP, FOR SPEEDS > 45 MPH
701421-08	LANE CLOSURE MULTILANE, DAY OPERATIONS ONLY, FOR SPEEDS ≥ 45 MPH TO 55 MPH
701901-06	TRAFFIC CONTROL DEVICES

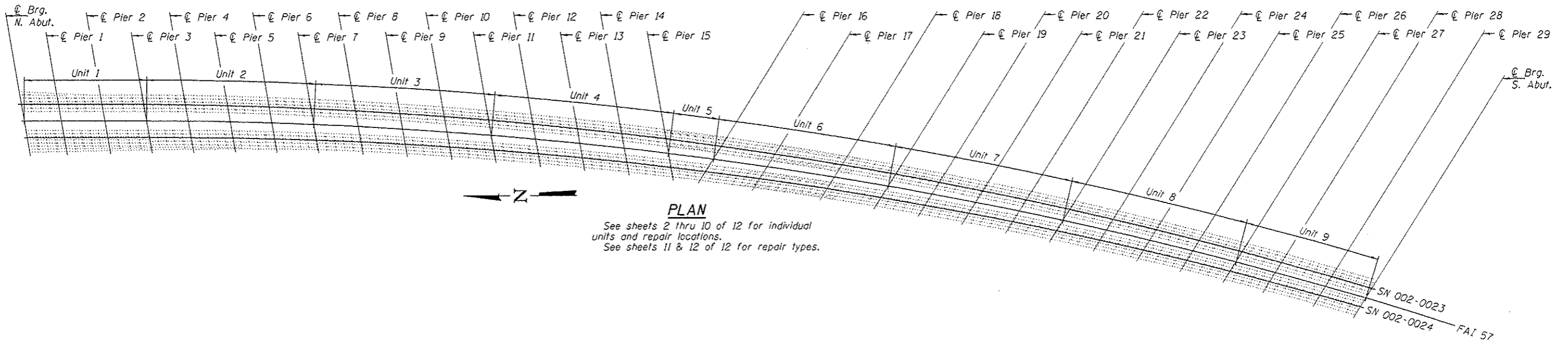
Prepared By:	<i>[Signature]</i> DISTRICT STUDIES & PLANS ENGINEER
Examined By:	<i>[Signature]</i> DISTRICT LAND ACQUISITION ENGINEER
Examined By:	<i>[Signature]</i> DISTRICT PROGRAM DEVELOPMENT ENGINEER
Examined By:	<i>[Signature]</i> DISTRICT OPERATIONS ENGINEER
Examined By:	<i>[Signature]</i> DISTRICT PROJECT IMPLEMENTATION ENGINEER
Examined By:	<i>[Signature]</i> DISTRICT CONSTRUCTION ENGINEER
Examined By:	<i>[Signature]</i> DISTRICT MATERIALS ENGINEER

FILE NAME	USER NAME	DESIGNED	REVISED	STATE OF ILLINOIS DEPARTMENT OF TRANSPORTATION	SIGNATURES, GENERAL NOTES, STANDARDS & INDEX OF SHEETS	F.A.I. RTE.	SECTION	COUNTY	TOTAL SHEETS	SHEET NO.
...	...	...	...		SCALE: _____ SHEET _____ OF _____ SHEETS STA. _____ TO STA. _____	57	D9 BRIDGE REPAIR 2017-3	ALEXANDER	17	2
CONTRACT NO. 78553										
ILLINOIS FED. AID PROJECT										



**GENERAL NOTES**

All structural steel shall conform to AASHTO Classification M-270 Gr. 36, unless otherwise noted.  
 Fasteners shall be high strength bolts. Bolts 7/8"φ, open holes 5/16"φ, unless otherwise noted.  
 Plan dimensions and details relative to existing plans are subject to nominal construction variations. The Contractor shall field verify existing dimensions and details affecting new construction and make necessary approved adjustments prior to construction or ordering of materials. Such variations shall not be cause for additional compensation for a change in scope of the work, however, the Contractor will be paid for the quantity actually furnished at the unit price bid for the work.  
 The existing structural steel coating contains lead. The Contractor shall take appropriate precautions to deal with the presence of lead on this project.  
 All new steel shall be galvanized per ASTM A123 or ASTM A153. Cost included with Structural Steel Repair.  
 Existing structural steel that will be in contact with new structural steel shall be cleaned and painted prior to erection as required by the Special Provision for "Cleaning and Painting Contact Surface Areas of Existing Steel Structures for Secondary Connections".

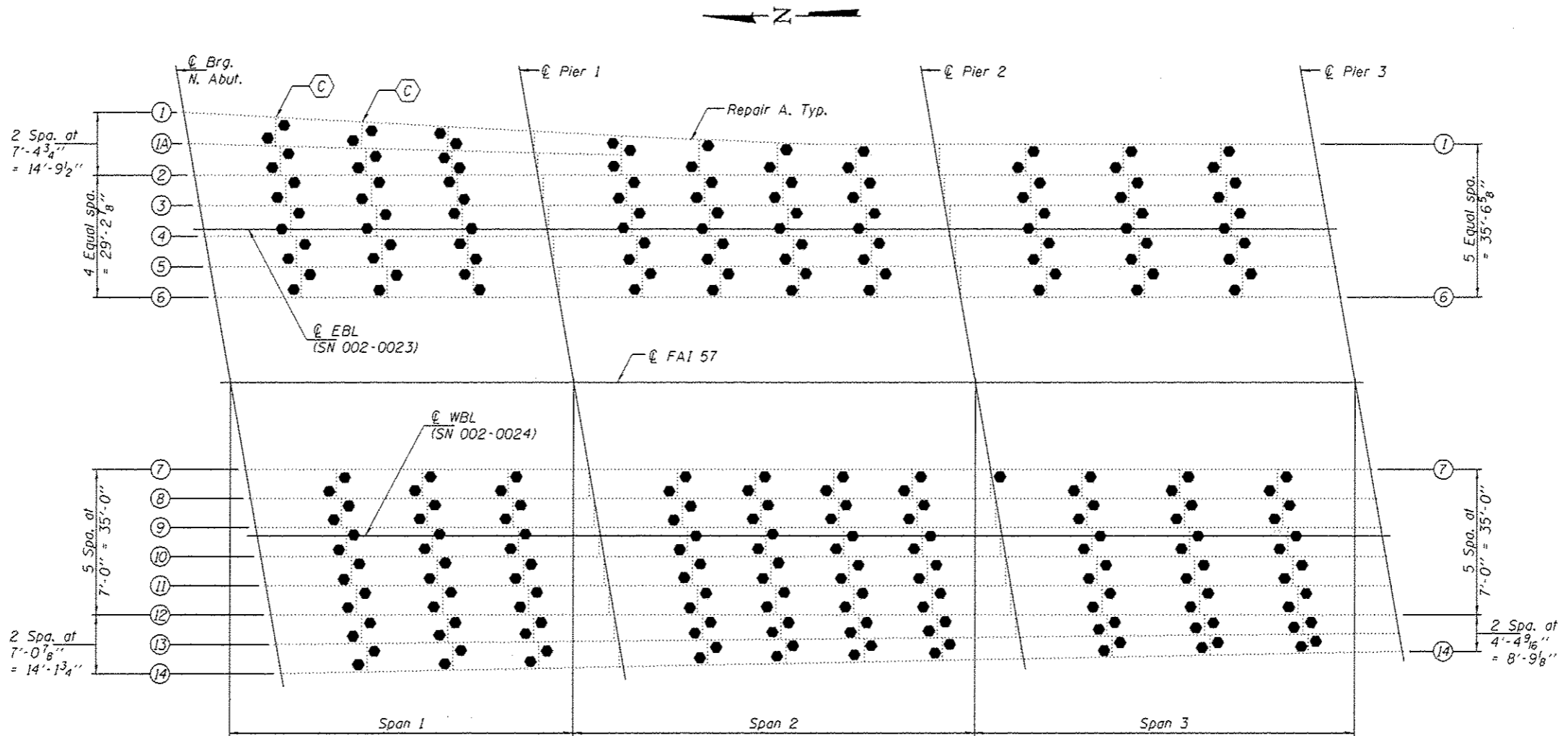


EXPIRES 11-30-2018

DESIGNED <i>Victor K. Volz</i>	DATE <u>MAY 5, 2017</u>	<b>STATE OF ILLINOIS DEPARTMENT OF TRANSPORTATION</b>	<b>PLAN</b> FAI 57 OVER IL RTE 3, LEVEE AND MPRR SN 002-0023 & 0024	F.A.I. RTE. 57	SECTION 09 Bridge Repair 2017-3	COUNTY ALEXANDER	TOTAL SHEETS 17	SHEET NO. 4
CHECKED <i>[Signature]</i>	REVISOR		SHEET NO. 1 OF 12 SHEETS	CONTRACT NO. 78553				
DRAWN <i>Dalva</i>	REVISOR		ILLINOIS FED. AID PROJECT					
CHECKED <i>[Signature]</i>	REVISOR							

**TOTAL BILL OF MATERIAL**

ITEM	UNIT	QUANTITY
Stiffener Intersection Modification	Each	2640
Crack Extension Modification	Each	20
Structural Repair of Concrete ≤ 5"	Sq. Ft.	1
Structural Steel Repair	Lbs.	350



**PLAN UNIT 1**

- - Repair A. 247 this sheet.
- ⊕ - Repair C. 2 this sheet.

DESIGNED *VHV*  
 CHECKED *DAB*  
 DRAWN *baliva*  
 CHECKED *VHV DAB*

PASSED  
*Carl Perry*  
 ENGINEER OF BRIDGES AND STRUCTURES

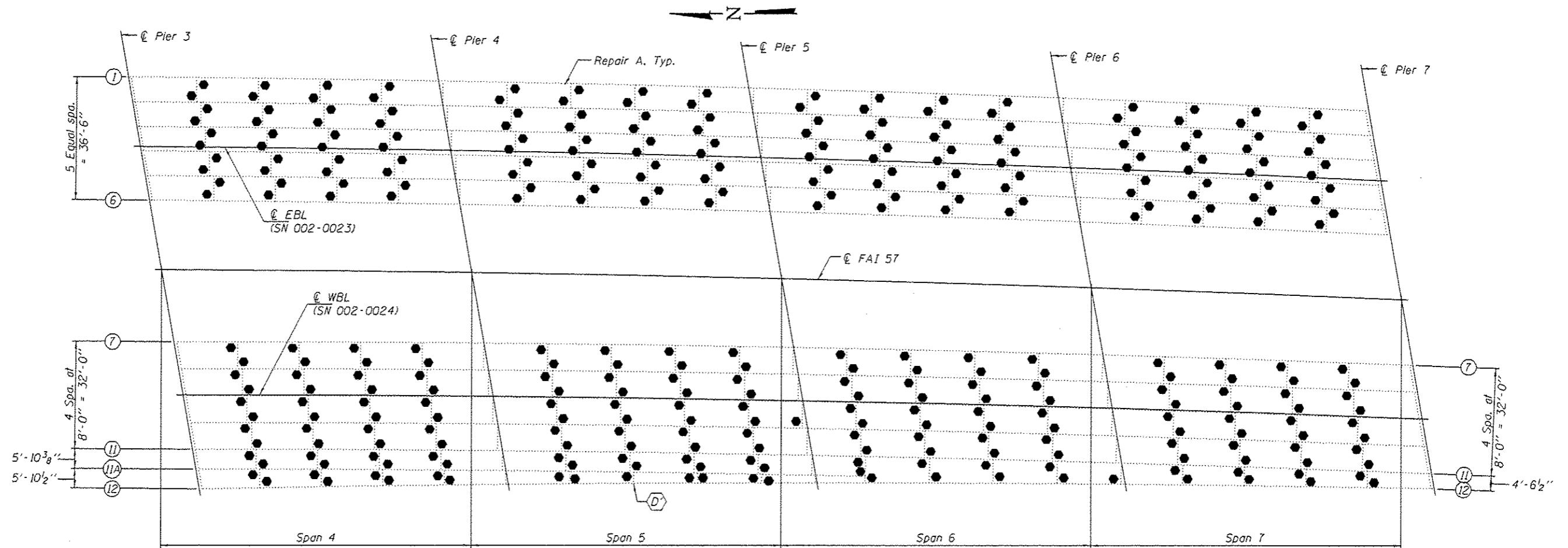
DATE MAY 5, 2017  
 REVISED  
 REVISED

STATE OF ILLINOIS  
 DEPARTMENT OF TRANSPORTATION

UNIT 1 REPAIR PLAN  
 SN 002-0023 & 0024

SHEET NO. 2 OF 12 SHEETS


F.A.I. RTE.	SECTION	COUNTY	TOTAL SHEETS	SHEET NO.
57	09 Bridge Repair 2017-3	ALEXANDER	17	5
CONTRACT NO. 78553			ILLINOIS FED. AID PROJECT	



**PLAN UNIT 2**

- - Repair A. 353 this sheet.
- ⬡ - Repair D'. 1 this sheet.

DESIGNED *VHV*  
 CHECKED *DAB*  
 DRAWN *baliva*  
 CHECKED *VHV DAB*

PASSED  
  
 ENGINEER OF BRIDGES AND STRUCTURES

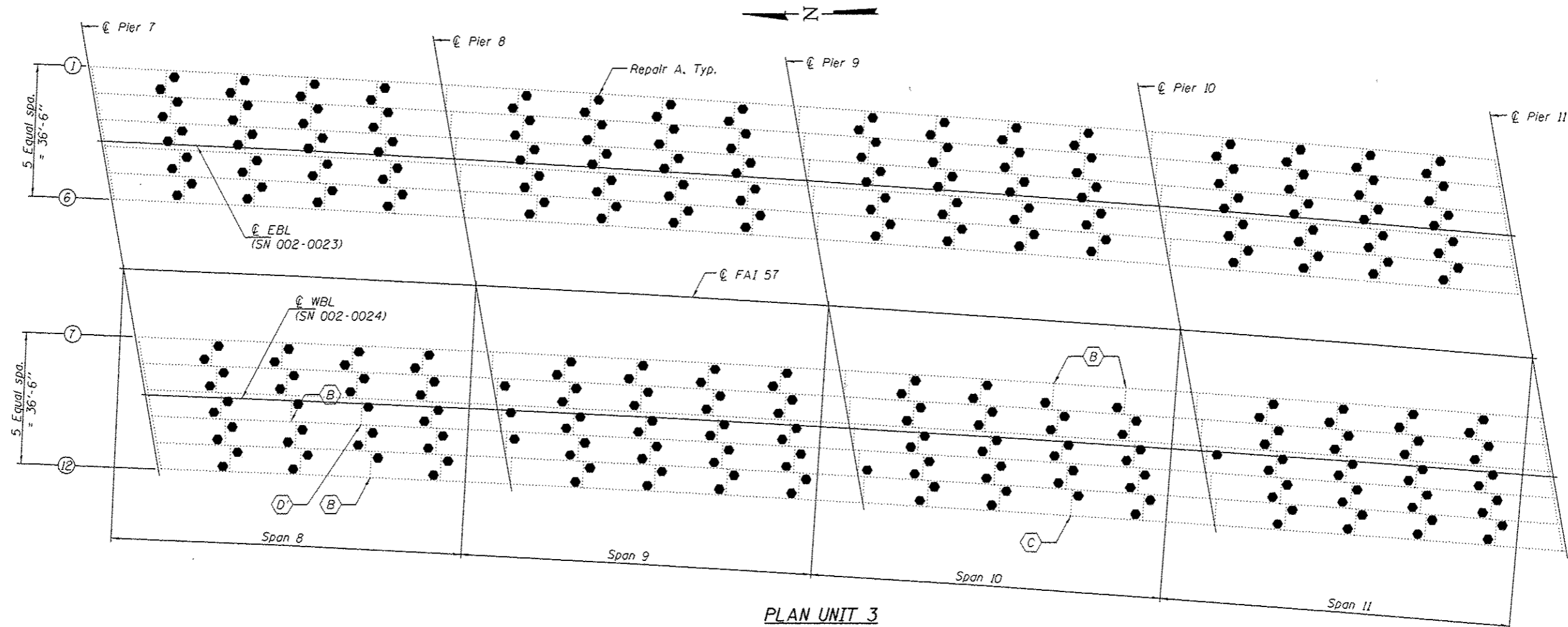
DATE MAY 5, 2017  
 REVISED  
 REVISED

STATE OF ILLINOIS  
 DEPARTMENT OF TRANSPORTATION

UNIT 2 REPAIR PLAN  
 SN 002-0023 & 0024

SHEET NO. 3 OF 12 SHEETS

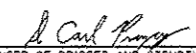
F.A.I. RTE.	SECTION	COUNTY	TOTAL SHEETS	SHEET NO.
57	09 Bridge Repair 2017-3	ALEXANDER	11	6
CONTRACT NO. 78553			ILLINOIS FED. AID PROJECT	



**PLAN UNIT 3**

- - Repair A. 319 this sheet.
- ⬡ - Repair B. 4 this sheet.
- ⬢ - Repair C. 3 this sheet.
- ⬣ - Repair D. 1 this sheet.

DESIGNED *VHV*  
 CHECKED *DAB*  
 DRAWN *baliva*  
 CHECKED *VHV DAB*

PASSED  
  
 ENGINEER OF BRIDGES AND STRUCTURES

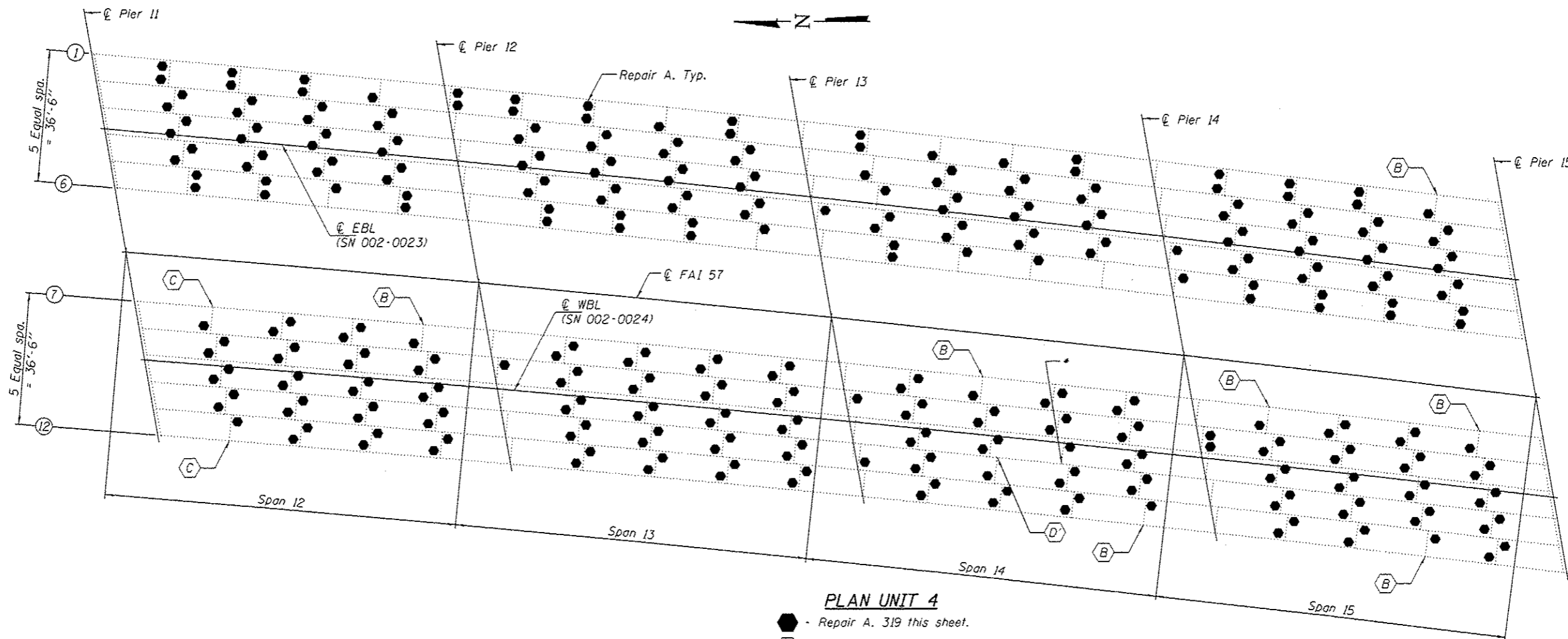
DATE MAY 5, 2017  
 REVISED  
 REVISED

STATE OF ILLINOIS  
 DEPARTMENT OF TRANSPORTATION

UNIT 3 REPAIR PLAN  
 SN 002-0023 & 0024

SHEET NO. 4 OF 12 SHEETS

F.A.I. RTE.	SECTION	COUNTY	TOTAL SHEETS	SHEET NO.
57	09 Bridge Repair 2011-3	ALEXANDER	11	4
CONTRACT NO. 78553			ILLINOIS FED. AID PROJECT	



- PLAN UNIT 4**
- - Repair A. 319 this sheet.
  - ⬡ - Repair B. 7 this sheet.
  - ⬢ - Repair C. 2 this sheet.
  - ⬣ - Repair D'. 1 this sheet.
  - \* - Repair previously completed by Day Labor

DESIGNED VHV  
 CHECKED DAB  
 DRAWN baliva  
 CHECKED VHV DAB

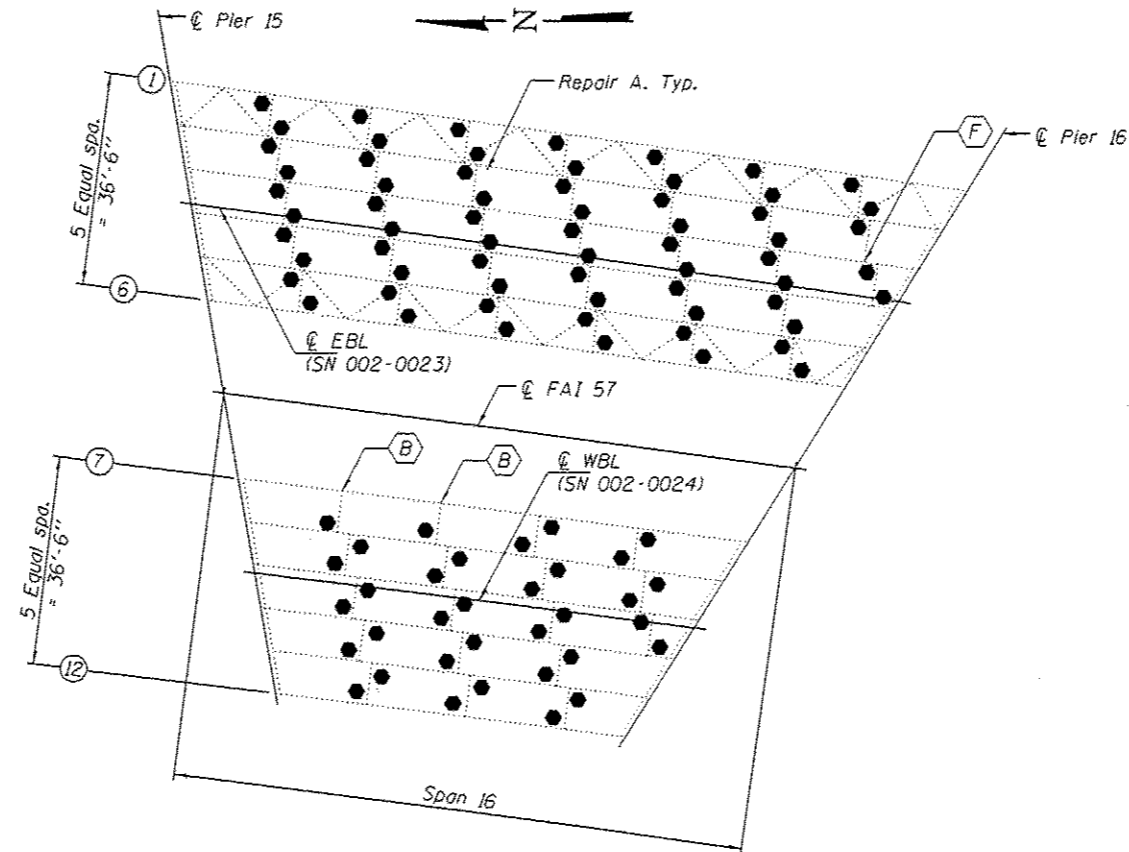
DATE MAY 5, 2017  
 PASSED  
 ENGINEER OF BRIDGES AND STRUCTURES  
 REVISIONS

STATE OF ILLINOIS  
 DEPARTMENT OF TRANSPORTATION

UNIT 4 REPAIR PLAN  
 SN 002-0023 & 0024  
 SHEET NO. 5 OF 12 SHEETS

F.A.I. RTE.	SECTION	COUNTY	TOTAL SHEETS	SHEET NO.
57	D9 Bridge Repair 2011-3	ALEXANDER	17	5
CONTRACT NO. 78553			ILLINOIS FED. AID PROJECT	





**PLAN UNIT 5**

- - Repair A. 101 this sheet.
- ⊖ - Repair B. 2 this sheet.
- ⊖ - Repair F. 1 this sheet.

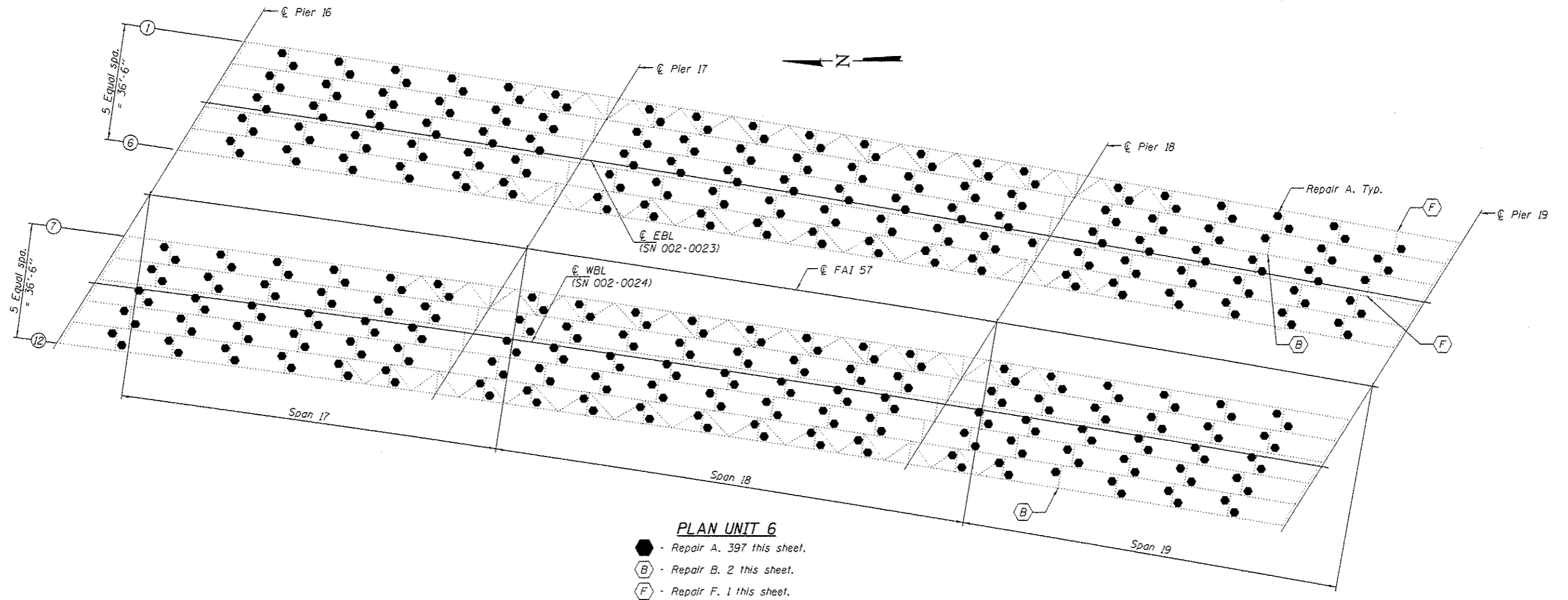
DESIGNED VHV  
 CHECKED DAB  
 DRAWN baliva  
 CHECKED VHV DAB

DATE MAY 5, 2017  
 PASSED *[Signature]*  
 ENGINEER OF BRIDGES AND STRUCTURES

STATE OF ILLINOIS  
 DEPARTMENT OF TRANSPORTATION

UNIT 5 REPAIR PLAN  
 SN 002-0023 & 0024  
 SHEET NO. 6 OF 12 SHEETS

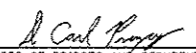
F.A.I. RTE.	SECTION	COUNTY	TOTAL SHEETS	SHEET NO.
57	09 Bridge Repair 2011-3	ALEXANDER	17	9
CONTRACT NO. 78553			ILLINOIS FED. AID PROJECT	



**PLAN UNIT 6**

- - Repair A. 397 this sheet.
- Ⓟ - Repair B. 2 this sheet.
- Ⓧ - Repair F. 1 this sheet.

DESIGNED *VHV*  
 CHECKED *DAB*  
 DRAWN *baliva*  
 CHECKED *VHV DAB*

PASSED  
  
 ENGINEER OF BRIDGES AND STRUCTURES

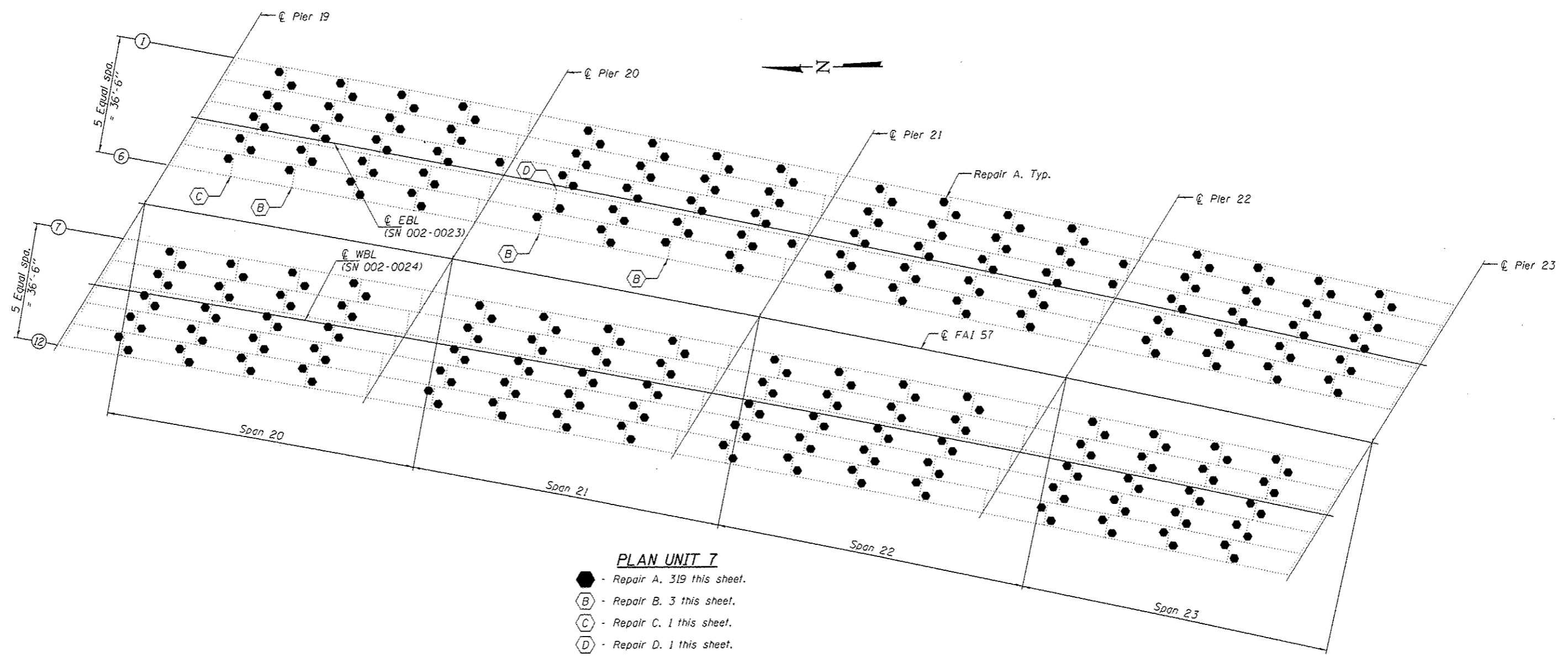
DATE MAY 5, 2017  
 REVISED \_\_\_\_\_  
 REVISED \_\_\_\_\_

STATE OF ILLINOIS  
 DEPARTMENT OF TRANSPORTATION

UNIT 6 REPAIR PLAN  
 SN 002-0023 & 0024

SHEET NO. 7 OF 12 SHEETS

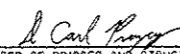
F.A.I. RTE.	SECTION	COUNTY	TOTAL SHEETS	SHEET NO.
57	09 Bridge Repair 2017-3	ALEXANDER	11	10
ILLINOIS FED. AID PROJECT			CONTRACT NO. 78553	



**PLAN UNIT 7**

- - Repair A. 319 this sheet.
- ⬡ - Repair B. 3 this sheet.
- ⬢ - Repair C. 1 this sheet.
- ⬣ - Repair D. 1 this sheet.

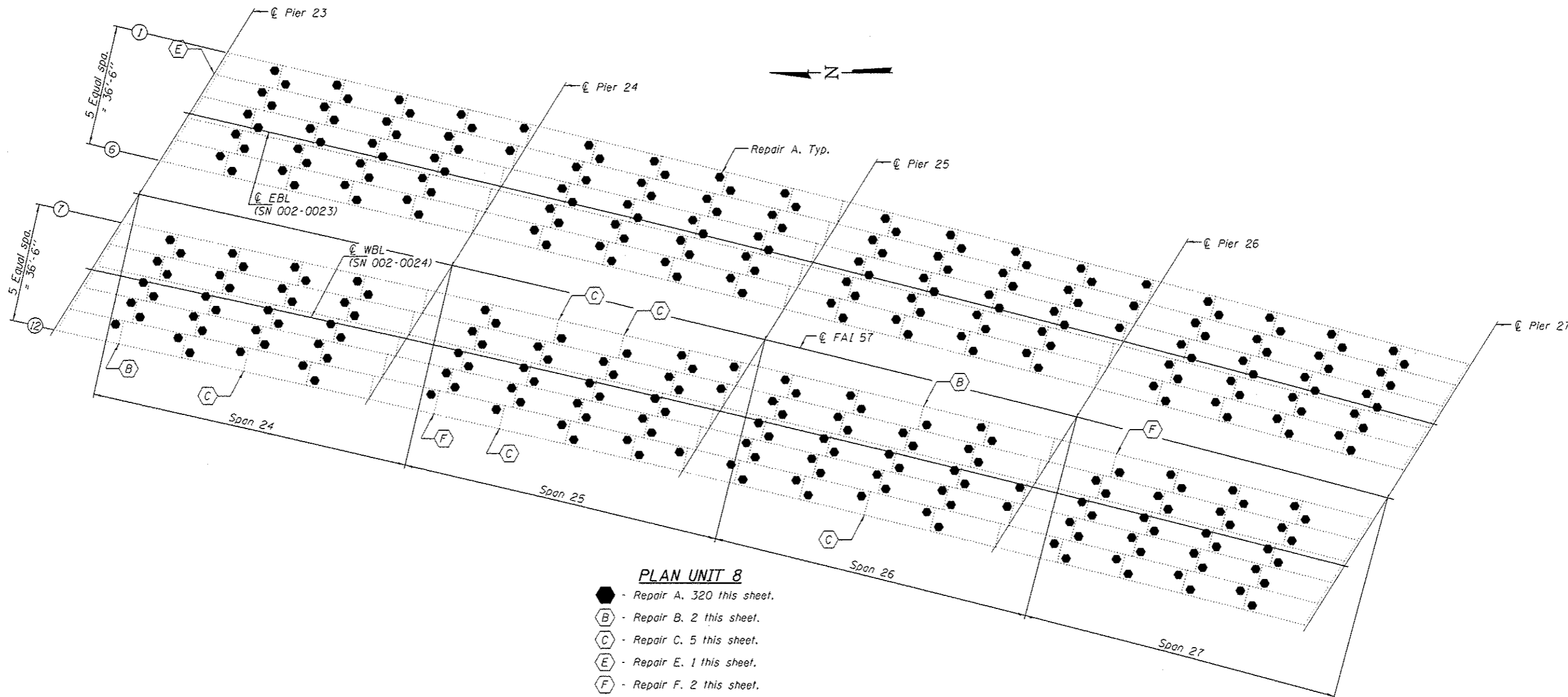
DESIGNED VHV  
 CHECKED DAB  
 DRAWN baliva  
 CHECKED VHV DAB

PASSED  
  
 ENGINEER OF BRIDGES AND STRUCTURES  
 DATE MAY 5, 2017  
 REVISED  
 REVISED

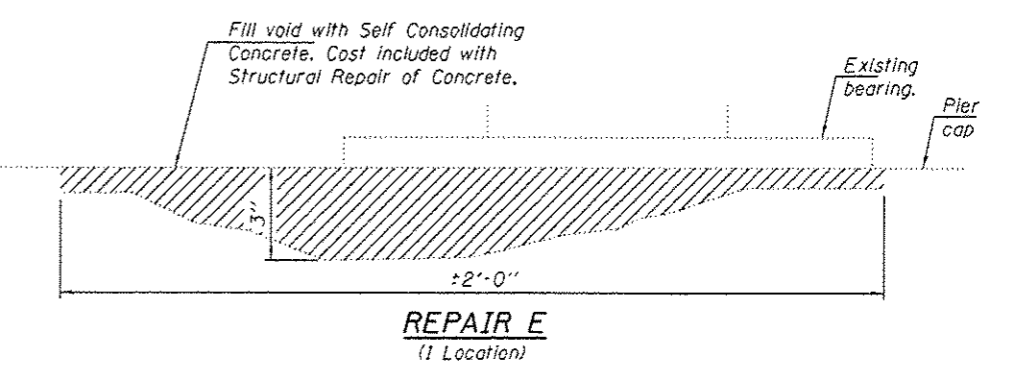
STATE OF ILLINOIS  
 DEPARTMENT OF TRANSPORTATION

UNIT 7 REPAIR PLAN  
 SN 002-0023 & 0024  
 SHEET NO. 8 OF 12 SHEETS

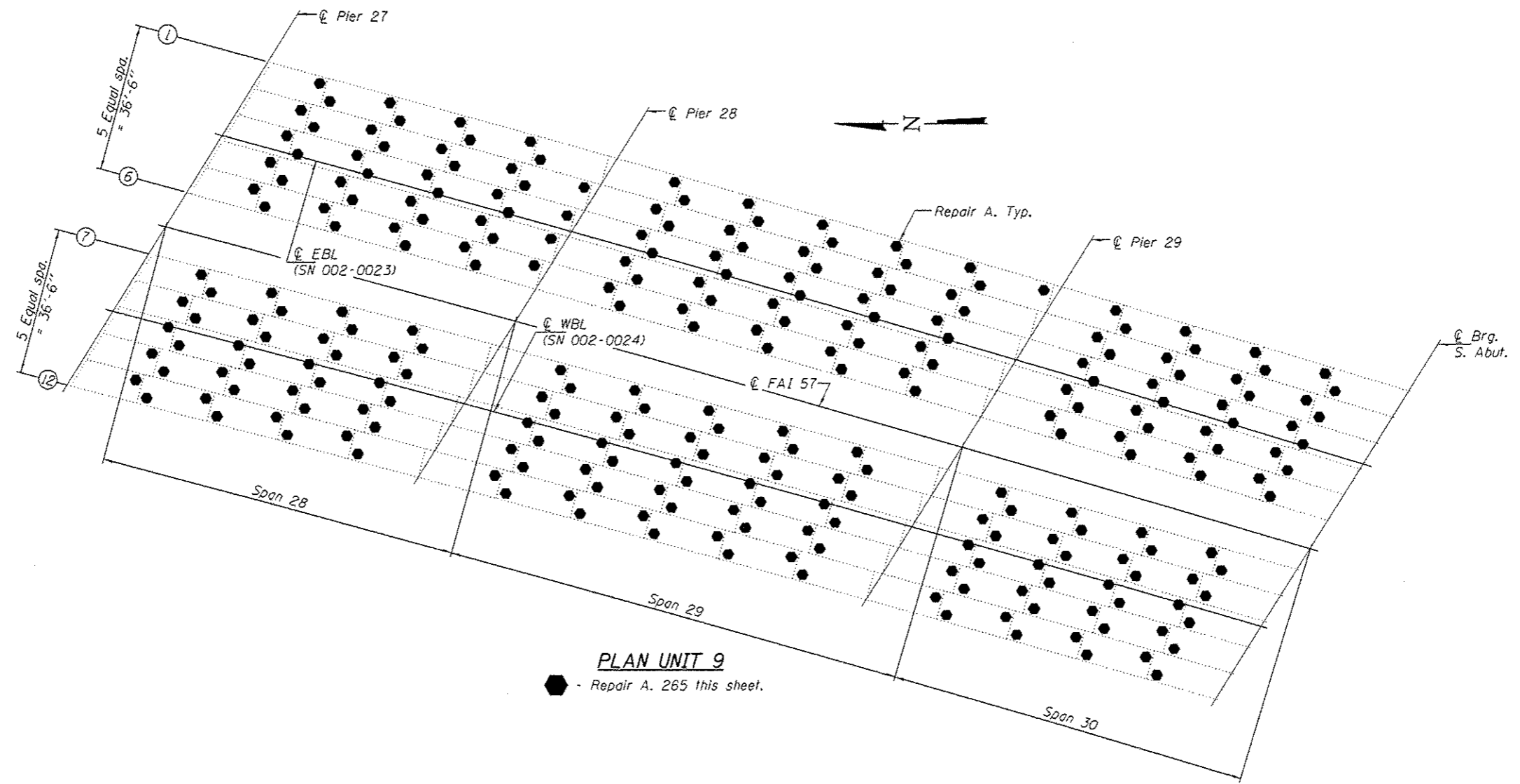
F.A.I. RTE.	SECTION	COUNTY	TOTAL SHEETS	SHEET NO.
57	09 Bridge Repair 2017-3	ALEXANDER	17	11
CONTRACT NO. 78553			ILLINOIS FED. AID PROJECT	



- PLAN UNIT 8**
- - Repair A. 320 this sheet.
  - ⬡ - Repair B. 2 this sheet.
  - ⬢ - Repair C. 5 this sheet.
  - ⬣ - Repair E. 1 this sheet.
  - ⬤ - Repair F. 2 this sheet.



DESIGNED <i>VHV</i>	DATE <u>MAY 5, 2017</u>	<b>STATE OF ILLINOIS DEPARTMENT OF TRANSPORTATION</b>	<b>UNIT 8 REPAIR PLAN SN 002-0023 &amp; 0024</b>		F.A.I. RTE.	SECTION	COUNTY	TOTAL SHEETS	SHEET NO.
CHECKED <i>DAB</i>	REVISIONS		SHEET NO. 9 OF 12 SHEETS		ST	D9 Bridge Repair 2017-3	ALEXANDER	11	12
DRAWN <i>Daliva</i>	REVISIONS			CONTRACT NO. 78553		[ILLINOIS] FED. AID PROJECT			
CHECKED <i>VHV DAB</i>	ENGINEER OF BRIDGES AND STRUCTURES <i>[Signature]</i>								



**PLAN UNIT 9**  
 ● - Repair A. 265 this sheet.

DESIGNED *VHV*  
 CHECKED *DAB*  
 DRAWN *baliva*  
 CHECKED *VHV DAB*

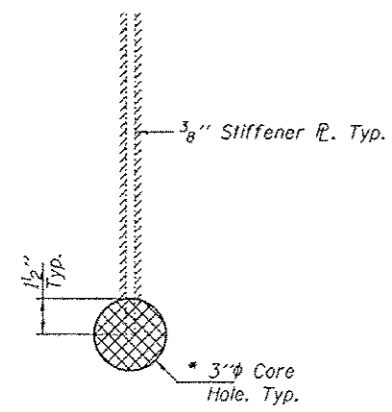
DATE MAY 5, 2017  
 PASSED *Carl Perry*  
 ENGINEER OF BRIDGES AND STRUCTURES  
 REVISED  
 REVISED

STATE OF ILLINOIS  
 DEPARTMENT OF TRANSPORTATION

UNIT 9 REPAIR PLAN  
 SN 002-0023 & 0024  
 SHEET NO. 10 OF 12 SHEETS

F.A.J. RTE.	SECTION	COUNTY	TOTAL SHEETS	SHEET NO.
57	09 Bridge Repair 2011-3	ALEXANDER	17	13
CONTRACT NO. 78553			ILLINOIS FED. AID PROJECT	

→ A

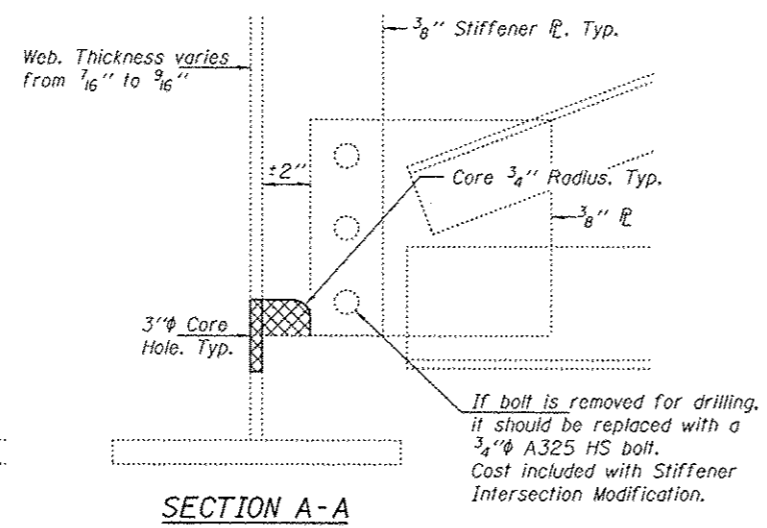


**ELEVATION**

\* Contractor must verify that cored hole has completely removed any cracks.

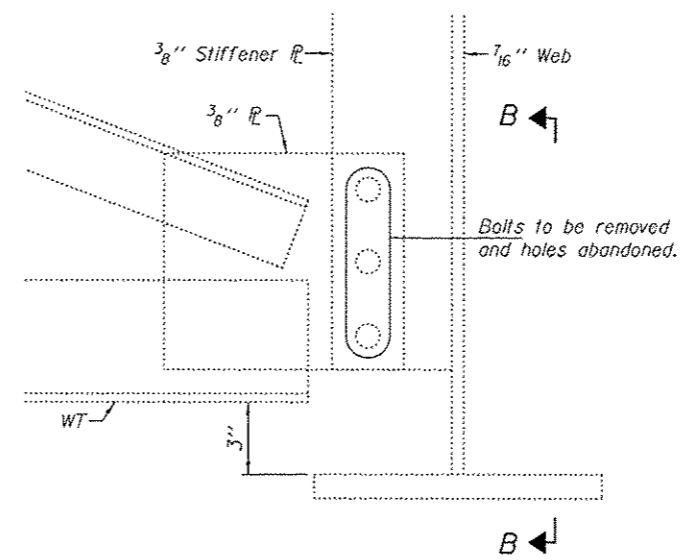
**REPAIR A**  
(2602 Locations)

See Special Provision for Stiffener Intersection Modification.



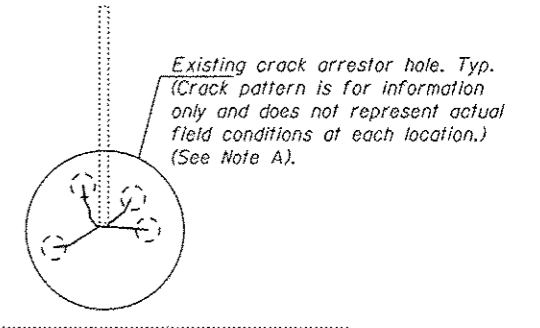
**SECTION A-A**

If bolt is removed for drilling, it should be replaced with a 3/4 inch A325 HS bolt. Cost included with Stiffener Intersection Modification.



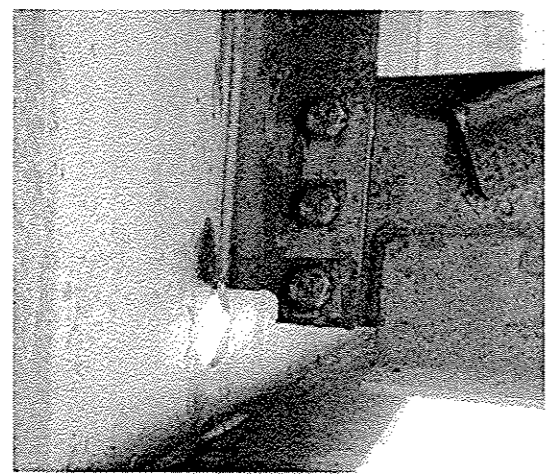
**REPAIR C**  
(11 Locations)

Cost shall be included with Crack Extension Modification.

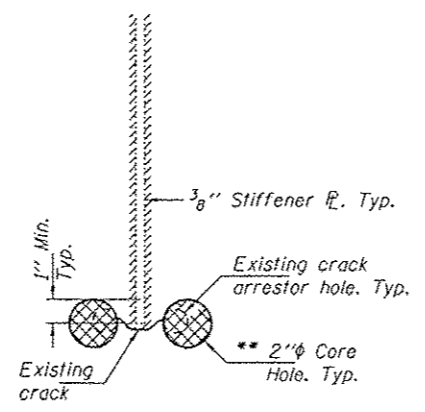


**SECTION B-B**

Note A: Contractor must verify that cracks have not propagated beyond the arrestor holes. If crack needs to be arrested, add arrestor hole. See Crack Arrestor Hole Detail on this sheet. Cleaning & Painting as per Crack Extension Modification Special Provision.

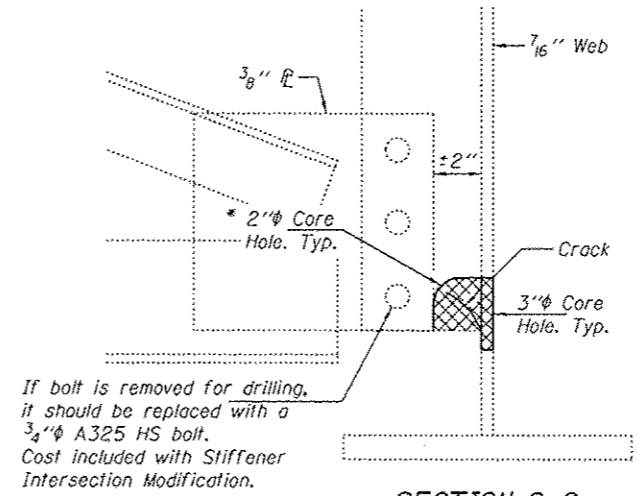


**TYPICAL COMPLETED REPAIR A**  
(Located on Span 25, SN 002-0024)



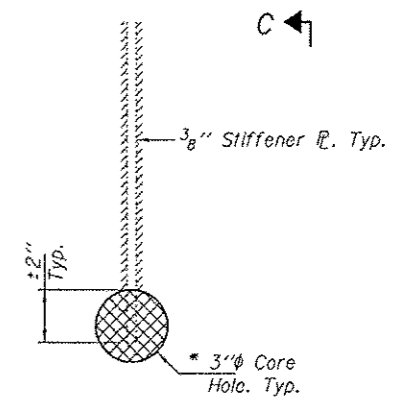
**REPAIR B**  
(20 Locations)

\*\* 2 inch core hole must completely remove the existing crack arrestor holes. See Special Provision for Crack Extension Modification.



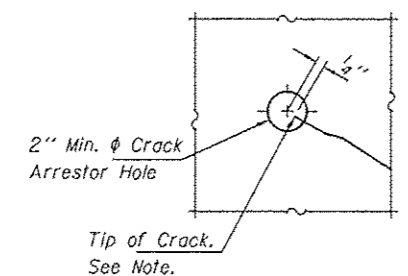
**SECTION C-C**

If bolt is removed for drilling, it should be replaced with a 3/4 inch A325 HS bolt. Cost included with Stiffener Intersection Modification.



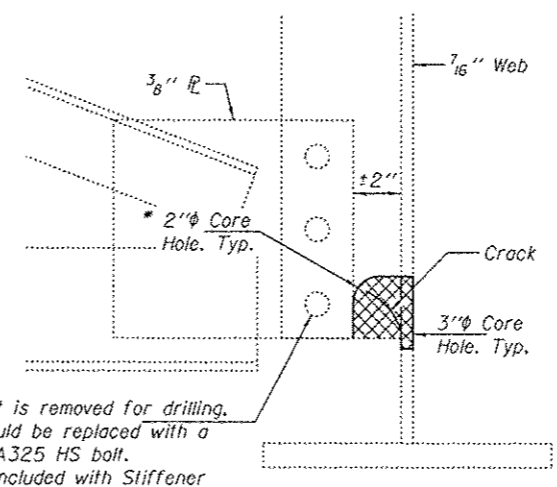
**ELEVATION C**

**REPAIR D**  
(1 Location)



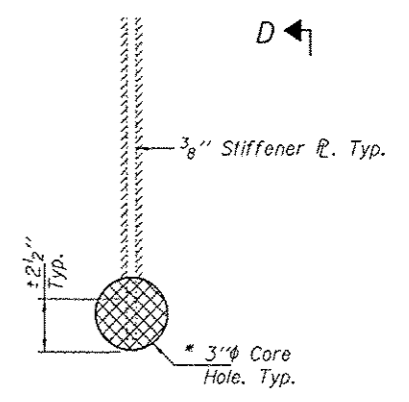
**CRACK ARRESTOR HOLE DETAIL**

Note: Locate crack tip using liquid dye penetrant or magnetic particle testing. Drill 2 inch min. diameter crack arrestor hole at the crack tip. After crack arrestor hole has been drilled, dye penetrant or magnetic particle testing shall be used to verify that the drilled hole has captured the crack tip. Cost shall be included with Crack Extension Modification.



**SECTION D-D**

If bolt is removed for drilling, it should be replaced with a 3/4 inch A325 HS bolt. Cost included with Stiffener Intersection Modification.



**ELEVATION D**

**REPAIR D'**  
(3 Locations)

Notes: See sheets 2 thru 10 of 12 for repair locations. Cross hatched areas indicate steel to be removed

DESIGNED VHV	DATE MAY 5, 2017	STATE OF ILLINOIS DEPARTMENT OF TRANSPORTATION	REPAIR DETAILS		F.A.I. R.T.E.	SECTION	COUNTY	TOTAL SHEETS	SHEET NO.
CHECKED DAB	REVISOR		SN 002-0023 & 0024		57	09 Bridge Repair 2017-3	ALEXANDER	17	14
DRAWN baliva	REVISOR		SHEET NO. 11 OF 12 SHEETS		CONTRACT NO. 78553				
CHECKED VHV DAB	REVISOR				ILLINOIS FED. AID PROJECT				

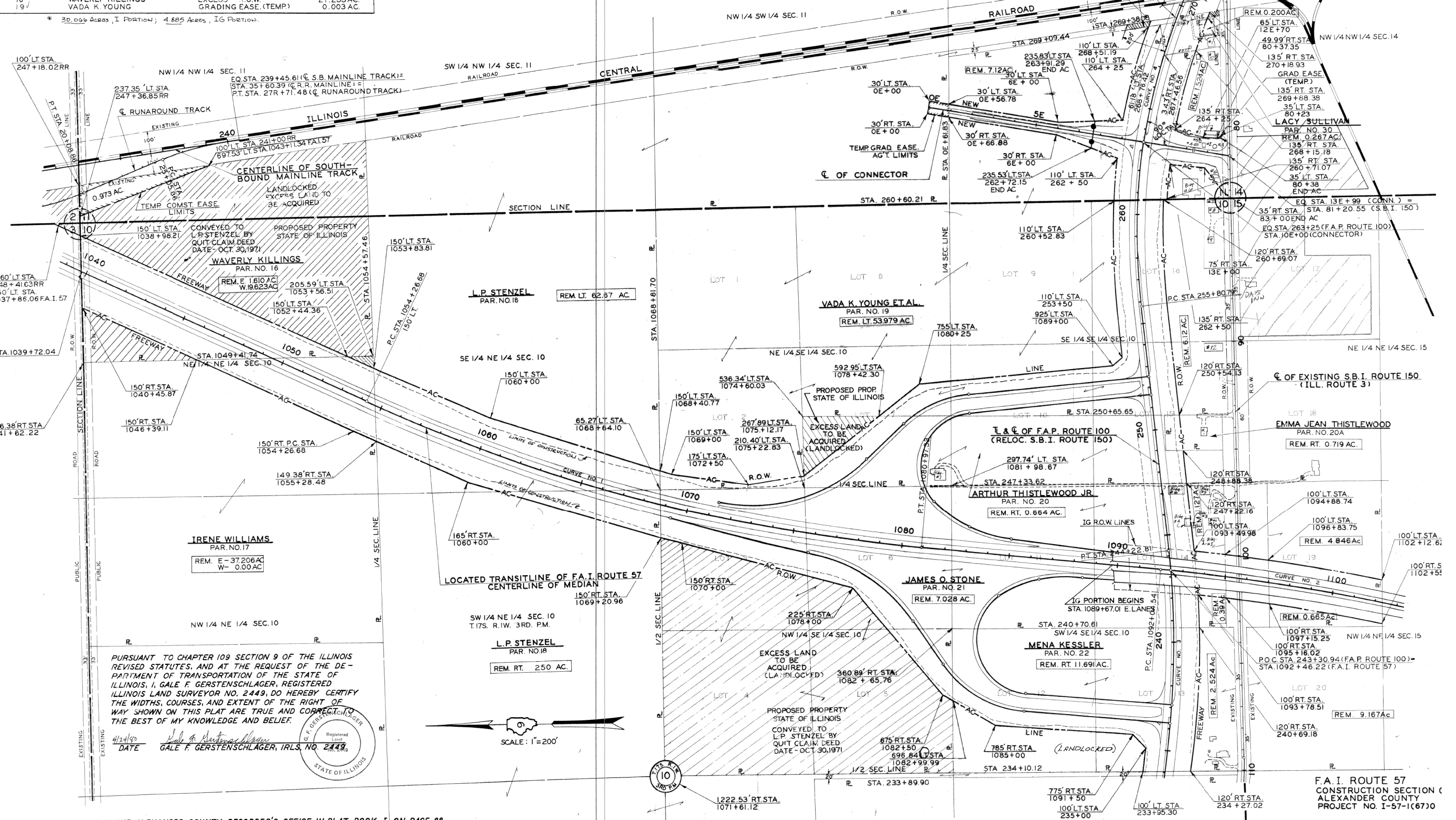


16	WAVELY KILLINGS	FREEMAN R.O.W.	3.550 AC.
17	IRENE WILLIAMS	EXCESS R.O.W.	0.089 AC.
18	L.P. STENZEL	FREEMAN R.O.W.	10.167 AC.
19	L.P. STENZEL	GRADING EASE (TEMP)	0.085 AC.
20	VADA K. YOUNG	FREEMAN R.O.W.	15.768 AC.
21	VADA K. YOUNG	NEW R.O.W.	1.099 AC.
22	A. THISTLEWOOD JR.	FREEMAN R.O.W.	11.848 AC.
23	A. THISTLEWOOD	EXCESS R.O.W.	1.210 AC.
24	EMMA JEAN THISTLEWOOD	FREEMAN R.O.W.	0.290 AC.
25	JAMES O. STONE	FREEMAN R.O.W.	34.951 AC*
26	JAMES O. STONE	EXCESS R.O.W.	25.597 AC.
27	MENA KESSLER	FREEMAN R.O.W.	13.075 AC.
28	L.P. STENZEL	TEMP. EASE (CONST BRIDGE)	0.077 AC.
29	LACY SULLIVAN	FREEMAN R.O.W.	0.618 AC.
30	WAVELY KILLINGS	EXCESS R.O.W.	21.233 AC.
31	VADA K. YOUNG	GRADING EASE (TEMP)	0.003 AC.

CURVE DATA - F.A.I. 57		CURVE DATA - F.A.P. 100	
CURVE NO. 1	CURVE NO. 2	CURVE NO. 3	CURVE NO. 4
$\Delta=20^{\circ}28'30''$ T=1349.73	$\Delta=25^{\circ}00'$ T=2117.03	$\Delta=58^{\circ}58'15''$ T=2429.77	$\Delta=95^{\circ}33'$ T=3156.65
$D=0^{\circ}46'00''$ L=2670.65	$D=0^{\circ}36'$ L=4166.67	$D=1^{\circ}20'$ L=4422.81	$D=2^{\circ}00'$ L=4777.50
R=7473.42' E=120.90'	R=9549.34' E=231.85'	R=4297.18' E=639.38	R=2864.79' E=1398.01

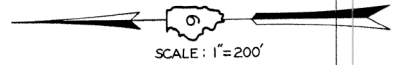
FOR INFORMATION ONLY

F.A.I. 57 02-1 ALEXANDER 8



PURSUANT TO CHAPTER 109 SECTION 9 OF THE ILLINOIS REVISED STATUTES, AND AT THE REQUEST OF THE DEPARTMENT OF TRANSPORTATION OF THE STATE OF ILLINOIS, I, GALE F. GERSTENSLAGER, REGISTERED ILLINOIS LAND SURVEYOR NO. 2449, DO HEREBY CERTIFY THE WIDTHS, COURSES, AND EXTENT OF THE RIGHT OF WAY SHOWN ON THIS PLAT ARE TRUE AND CORRECT TO THE BEST OF MY KNOWLEDGE AND BELIEF.

DATE: 4/24/10  
 GALE F. GERSTENSLAGER  
 Registered Land Surveyor  
 STATE OF ILLINOIS



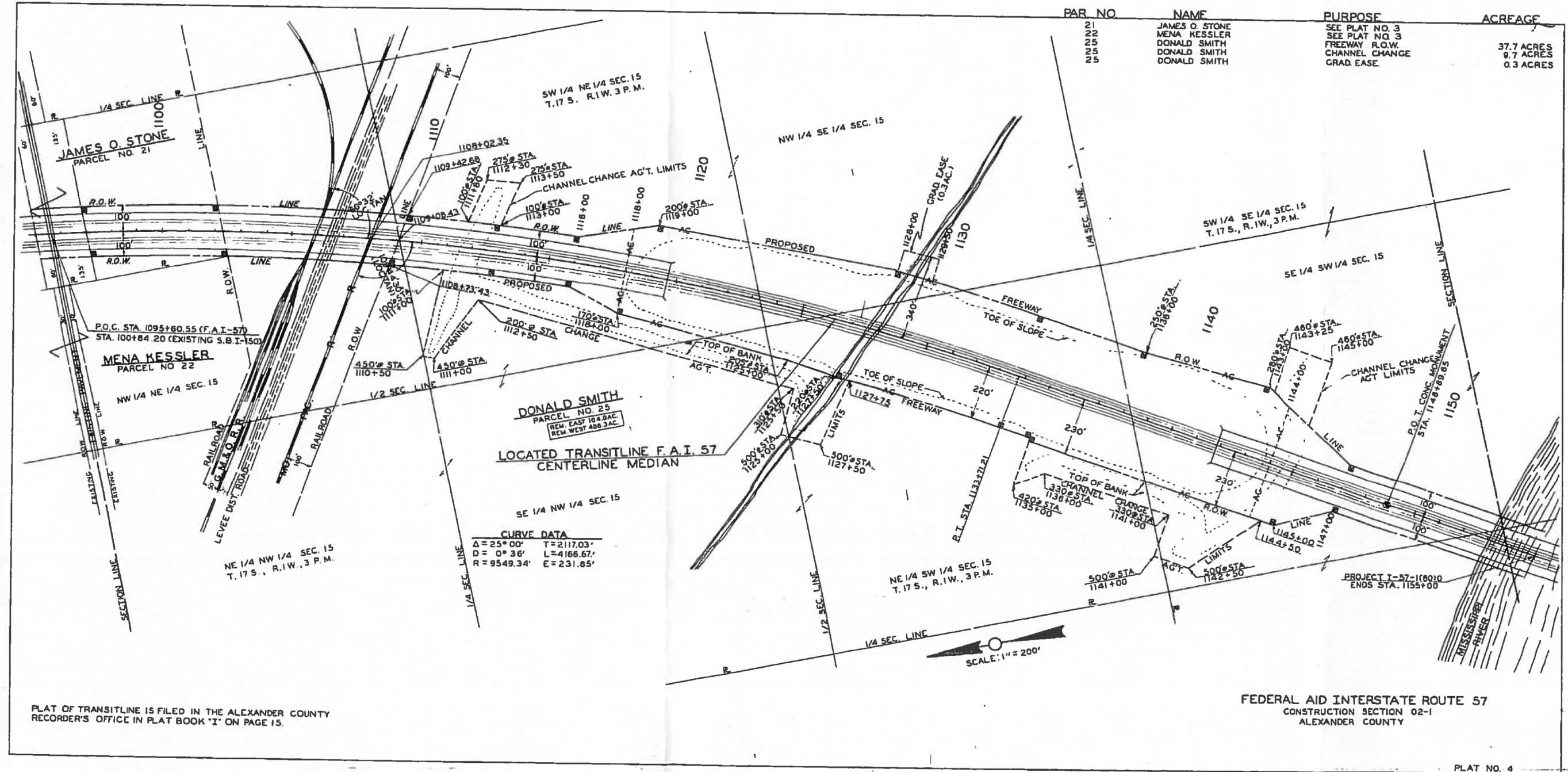
THIS PLAT IS FILED IN THE ALEXANDER COUNTY RECORDER'S OFFICE IN PLAT BOOK 1 ON PAGE 88

FILE NAME: p:\11\084EBIDINTEG\illinois.gov\PI\DOT\Documents\DOT Offices\District 9\Projects\78553\Drawings\CAD\Sheets\78553.sht.dgn	USER NAME: hollmandb	DESIGNED: -	REVISED: -	STATE OF ILLINOIS DEPARTMENT OF TRANSPORTATION	EXISTING RIGHT OF WAY SHEET (FOR INFORMATIONAL ONLY)	F.A.I. R.T.E.: 57	SECTION: 09	COUNTY: ALEXANDER	TOTAL SHEETS: 17	SHEET NO.: 16
PLOT SCALE: 100.0000' / in.	CHECKED: -	REVISED: -	SCALE: SHEET OF SHEETS			STA. TO STA.	ILLINOIS FED. AID PROJECT			
PLOT DATE: 3/22/2017	DATE: -	REVISED: -	CONTRACT NO. 78553							



ROUTE NO.	SEC	COUNTY	TOTAL SHEETS	SHEET NO.
F.A.I. 57	02-1VB	ALEXANDER	158	149
FED. ROAD DIST. NO. 7	ILLINOIS	PROJECT		

FOR INFORMATION ONLY



PAR. NO.	NAME	PURPOSE	ACREAGE
21	JAMES O. STONE	SEE PLAT NO. 3	
22	MENA KESSLER	SEE PLAT NO. 3	
25	DONALD SMITH	FREEWAY R.O.W.	37.7 ACRES
25	DONALD SMITH	CHANNEL CHANGE	9.7 ACRES
25	DONALD SMITH	GRAD. EASE	0.3 ACRES

PLAT OF TRANSITLINE IS FILED IN THE ALEXANDER COUNTY RECORDER'S OFFICE IN PLAT BOOK "I" ON PAGE 15.

FEDERAL AID INTERSTATE ROUTE 57  
CONSTRUCTION SECTION 02-1  
ALEXANDER COUNTY

PLAT NO. 4

APPROVED BY \_\_\_\_\_ DATE \_\_\_\_\_

DRAWN BY \_\_\_\_\_  
WRITTEN BY \_\_\_\_\_  
CHECKED BY \_\_\_\_\_  
INSPECTED BY \_\_\_\_\_

FILE NAME =	USER NAME = hollmandb	DESIGNED -	REVISED -	<b>STATE OF ILLINOIS DEPARTMENT OF TRANSPORTATION</b>	<b>EXISTING RIGHT OF WAY SHEET (FOR INFORMATIONAL ONLY)</b>				F.A.I. RTE.	SECTION	COUNTY	TOTAL SHEETS	SHEET NO.
pw\11084EBIDINTEG\illinois.gov\PI\DOT\Documents\DOT Offices\District 9\Projects\78553\Drawings\CAD\Sheets\78553.sht.dgn		REVISIONS	REVISIONS						57	09 BRIDGE REPAIR 2017-3	ALEXANDER	17	17
Default	PLOT SCALE = 100.0000' / in.	CHECKED -	REVISIONS		CONTRACT NO. 78553				ILLINOIS FED. AID PROJECT				
	PLOT DATE = 3/22/2017	DATE -	REVISIONS		SCALE:	SHEET	OF	SHEETS	STA.	TO	STA.		