

STATE OF ILLINOIS
DEPARTMENT OF TRANSPORTATION

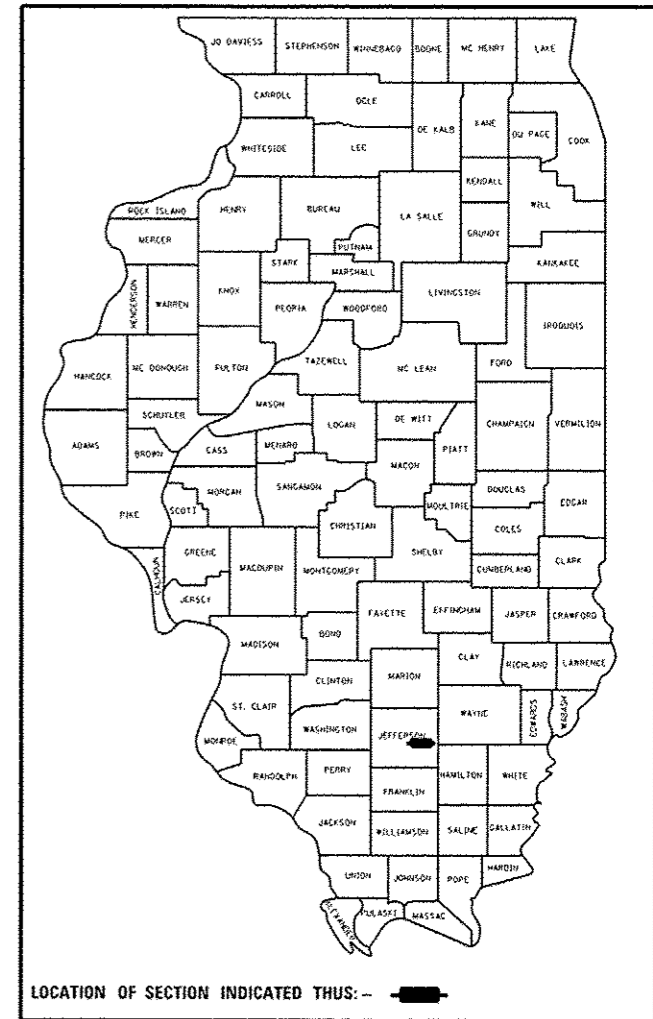
F.A.I. RTE.	SECTION	COUNTY	TOTAL SHEETS	SHEET NO.
64	D9 BRIDGE REPAIR 2017-4	JEFFERSON	10	1
		ILLINOIS	CONTRACT NO. 78559	

FOR INDEX OF SHEETS, SEE SHEET NO. 2
FOR SUMMARY OF QUANTITIES, SEE SHEET NO. 3
FOR STRUCTURAL PAVEMENT DESIGN INFORMATION, SEE SHEET NO. N/A

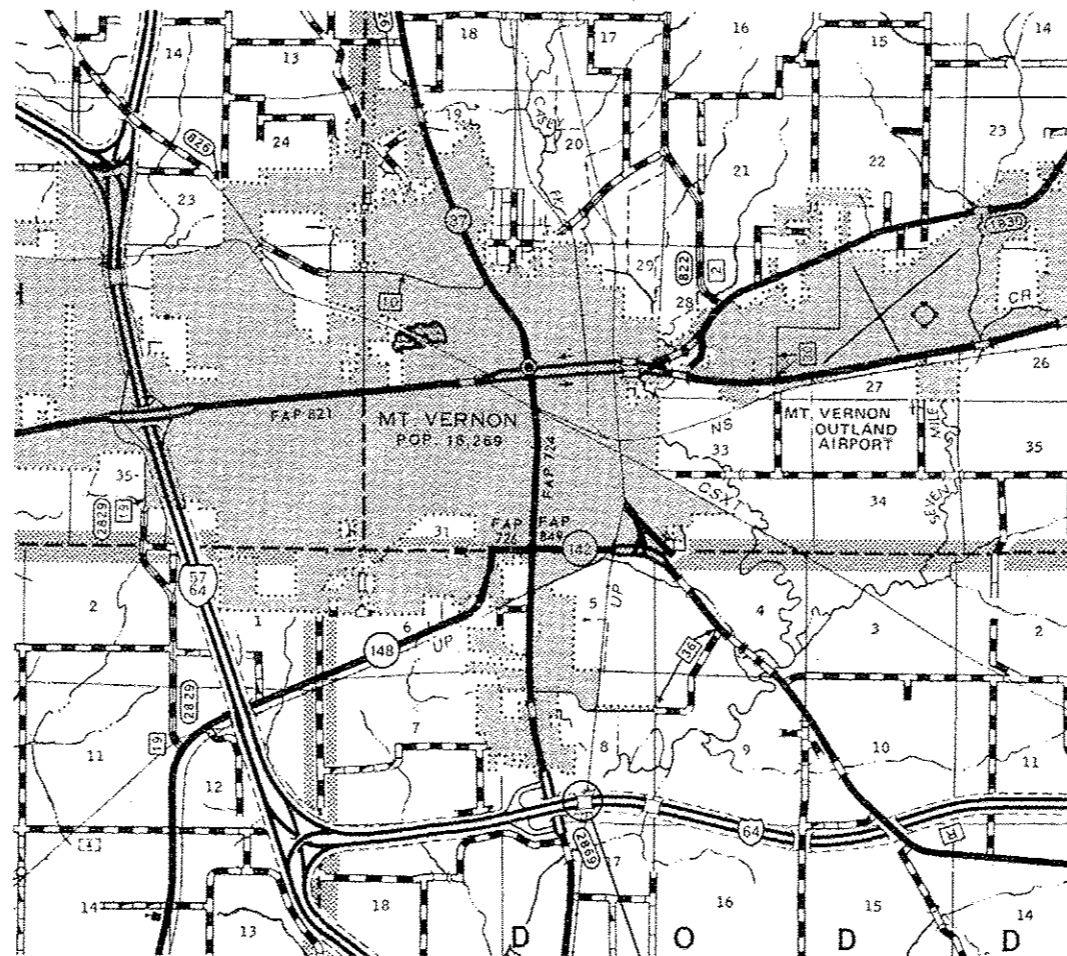
PROPOSED HIGHWAY PLANS

F.A.I. ROUTE 64 EASTBOUND (I-64 EB)
SECTION D9 BRIDGE REPAIR 2017-4
PROJECT NHPP-0064(405)
SUBSTRUCTURE REPAIR
JEFFERSON COUNTY

D-99-010-17



C-99-010-17



BRIDGE DATA

INVENTORY RATING 1.045 (37)
OPERATING RATING 1.625 (58)
NO LOAD POSTING

I-64 TRAFFIC DATA

2016 ADT 5850 (ONE WAY)
29% TRUCKS

TOWNSHIP

DODDS

DESIGN DESIGNATION : N/A

COORDINATE SYSTEM : N/A

POSTED SPEED : 70 MPH

J.U.L.I.E.
JOINT UTILITY LOCATION INFORMATION FOR EXCAVATION
1-800-892-0123
OR 811

PROJECT ENGINEER DAVID PICHE
PROJECT DESIGNER RITA GAUTNEY

CONTRACT NO. 78559

EXISTING STRUCTURE NO. 041-0090

BRIDGE LENGTH = 334.75 FT.

CARRIES F.A.I. ROUTE 64 (EB)
OVER CASEY FORK & UNION PACIFIC RAILROAD
AT MILEPOST 80

STATE OF ILLINOIS
DEPARTMENT OF TRANSPORTATION

SUBMITTED March 20 20 17
Duffy & Keenan
REGION FIVE ENGINEER
May 12 20 17
Maurice M. Addis, P.E.
ENGINEER OF DESIGN AND ENVIRONMENT
May 12 20 17
David A. [Signature]
DIRECTOR OF PROGRAM DEVELOPMENT

PRINTED BY THE AUTHORITY
OF THE STATE OF ILLINOIS

INDEX OF SHEETS

- 1 COVER SHEET
- 2 HIGHWAY STANDARDS, GENERAL NOTES
- 3 SUMMARY OF QUANTITIES
- 4 GENERAL PLAN & ELEVATION
- 5 STAGE CONSTRUCTION DETAIL
- 6 PIER CAP REPAIR DETAILS
- 7 BEARING REINSTALLATION DETAILS
- 8 EXISTING BEARING DETAILS
- 9, 10 EXISTING PIER DETAILS

GENERAL NOTES

PRIOR TO ANY CONSTRUCTION OR AREA DISTURBANCE, IN ACCORDANCE WITH [HTTP://WWW.FWS.GOV/MIDWEST/ENDANGERED/SECTION7/FHWA/PDF/BRIDGEASSESSMENTGUIDANCEANDDATASHEETFINAL19FEB2016.PDF](http://www.fws.gov/midwest/ENDANGERED/SECTION7/FHWA/PDF/BRIDGEASSESSMENTGUIDANCEANDDATASHEETFINAL19FEB2016.PDF), THE ILLINOIS DEPARTMENT OF TRANSPORTATION RESIDENT ENGINEER WILL PERFORM A PRELIMINARY BAT ASSESSMENT AND FORWARD THE RESULTS TO THE DISTRICT 9 ENVIRONMENTAL STUDIES COORDINATOR AT JULIE.KLAMM@ILLINOIS.GOV.



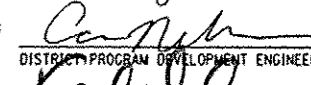

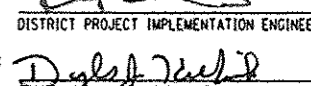

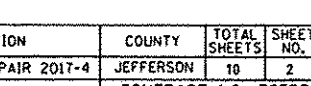
REVISE STANDARD SPECIFICATIONS ARTICLE 107.12, PARAGRAPH 5, LAST SENTENCE TO READ: "ALL OTHER RAILROAD FLAGGER COSTS WILL BE INCURRED BY THE DEPARTMENT ACCORDING TO ARTICLE 109.05."

A CONTRACTOR'S RIGHT-OF-ENTRY PERMIT IS REQUIRED BEFORE ANY WORK CAN COMMENCE ON RAILROAD PROPERTY. THE COST TO OBTAIN THIS PERMIT SHALL BE CONSIDERED INCIDENTAL TO THE PROJECT.

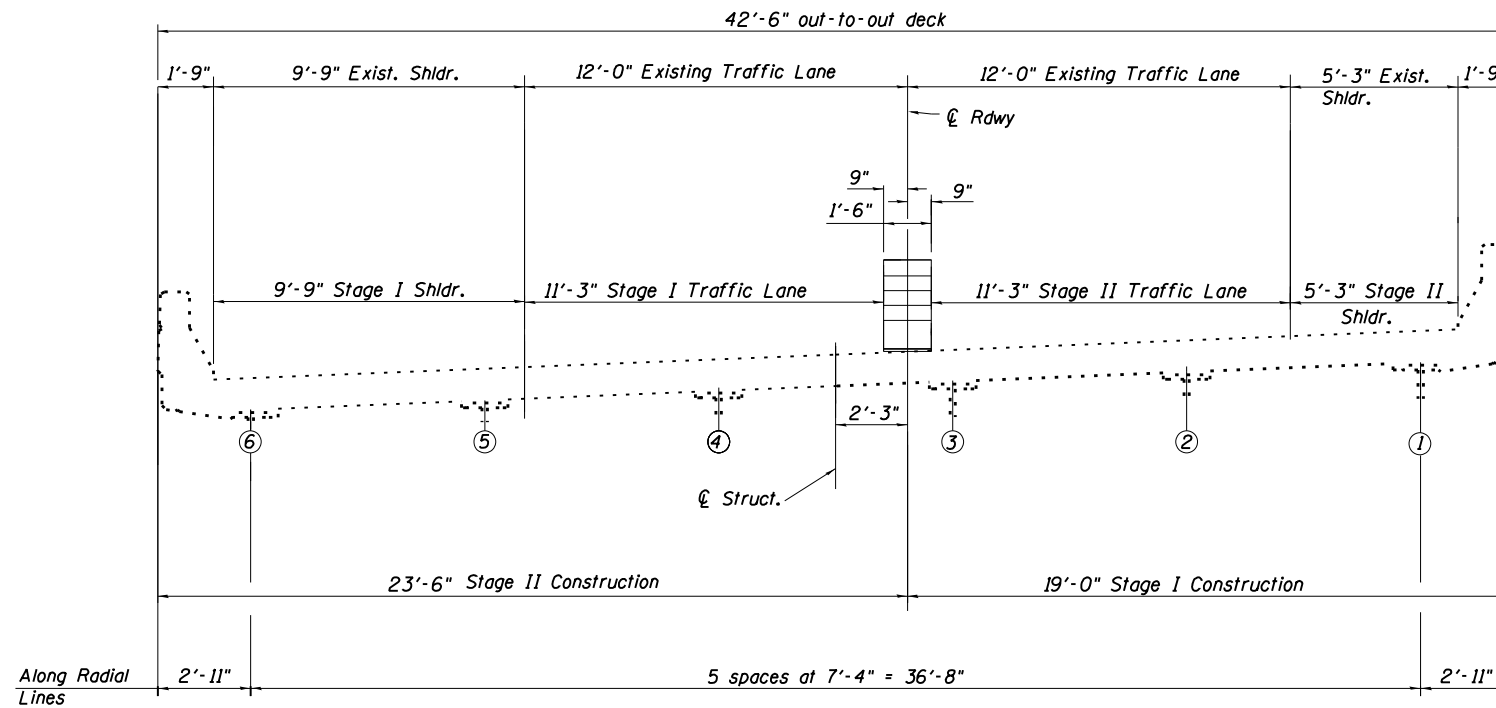
COMMITMENTS:
NONE AS OF MARCH 24, 2017

ILLINOIS HIGHWAY STANDARDS

- 000001-06 STANDARD SYMBOLS, ABBREVIATIONS AND PATTERNS
- 001001-02 AREAS OF REINFORCEMENT BARS
- 701101-05 OFF-ROAD, MULTI LANE 15' TO 24" FROM PAVEMENT EDGE
- 701400-09 APPROACH TO LANE CLOSURE FREEWAY/EXPRESSWAY
- 701401-10 LANE CLOSURE FREEWAY/EXPRESSWAY
- 701411-09 LANE CLOSURE, MULTI LANE, FOR SPEEDS > 45 MPH,
AT ENTRANCE OR EXIT RAMP
- 701901-06 TRAFFIC CONTROL DEVICES

Prepared By:		DISTRICT STUDIES & PLANS ENGINEER
Examined By:		DISTRICT LAND ACQUISITION ENGINEER
Examined By:		DISTRICT PROGRAM DEVELOPMENT ENGINEER
Examined By:		DISTRICT OPERATIONS ENGINEER
Examined By:		DISTRICT PROJECT IMPLEMENTATION ENGINEER
Examined By:		DISTRICT CONSTRUCTION ENGINEER
Examined By:		DISTRICT MATERIALS ENGINEER

FILE NAME *	USER NAME * gautnagr	DESIGNED -	REVISED -	STATE OF ILLINOIS DEPARTMENT OF TRANSPORTATION	INDEX OF SHEETS, HIGHWAY STANDARDS, GENERAL NOTES	F.A.I. RTE.	SECTION	COUNTY	TOTAL SHEETS	SHEET NO.	
PROJECT	DOCUMENTS\DOT OFFICES\District 9\Projects\78559\BRIDGE\to\CAD\sheet\78559-sh.dgn	CHECKED -	REVISED -			64	D9 BRIDGE REPAIR 2017-4	JEFFERSON	10	2	
PLOT SCALE * 60.0000' / IN.		DATE -	REVISED -			CONTRACT NO. 78559					
PLOT DATE * 3/15/2017						ILLINOIS FED. AID PROJECT					



STAGE CONSTRUCTION DETAIL

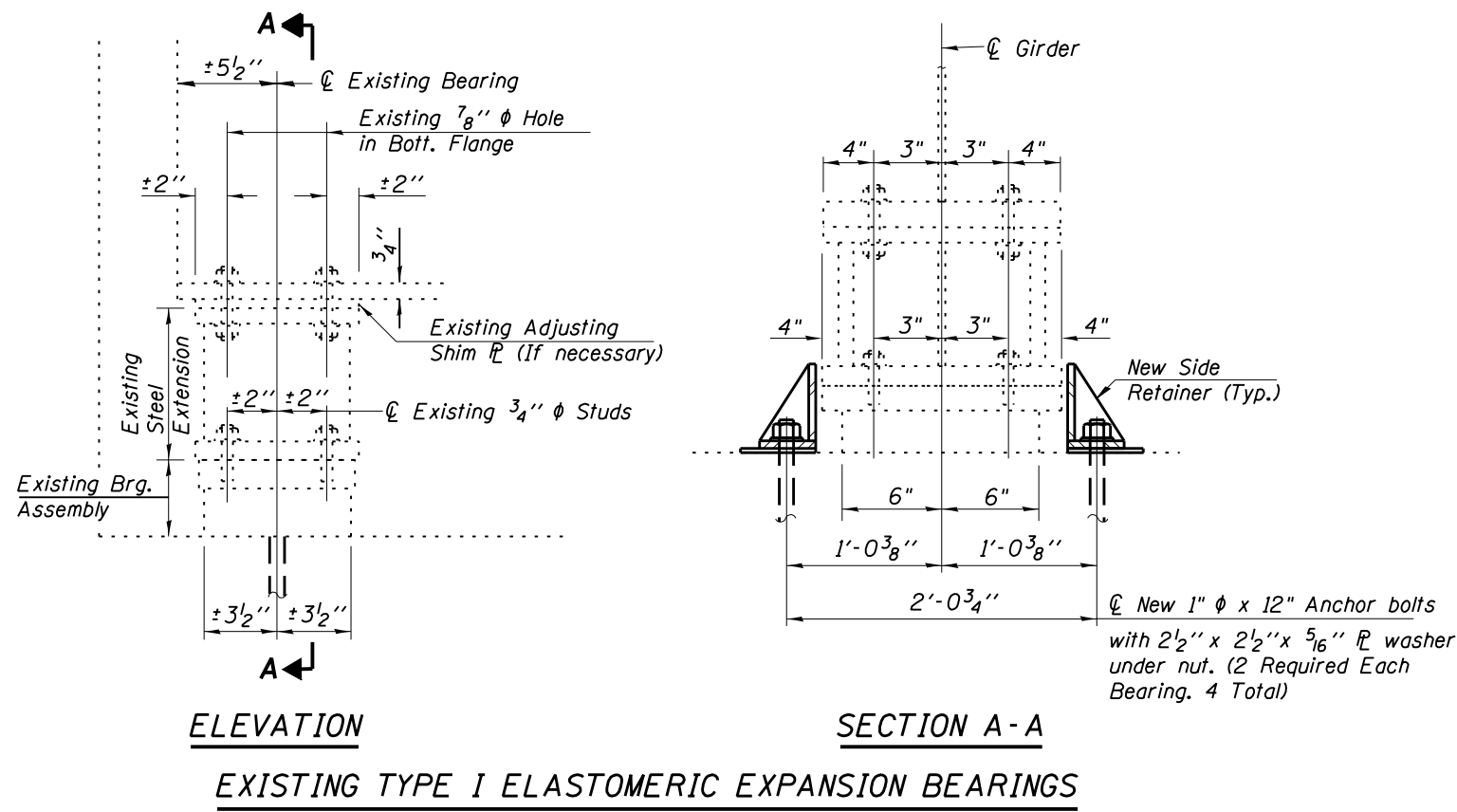
(Looking West)

FILE NAME =	USER NAME = gautneyrk	DESIGNED - RKG	REVISED -
pw\ill084EBIDINTEG.illinois.gov\PI\DOT\Documents\DOT Offices\District 9\Projects\78559\Drawings\CAD\Sheets\78559.sht.dgn		CHECKED - MAS	REVISED -
#MODELNAME#	PLOT DATE = 3/15/2017	DATE -	REVISED -

STATE OF ILLINOIS
DEPARTMENT OF TRANSPORTATION

STAGE CONSTRUCTION DETAILS	
SN 041-0090	
SCALE: _____	SHEET 3 OF _____ SHEETS STA. _____ TO STA. _____

F.A.I. R.T.E.	SECTION	COUNTY	TOTAL SHEETS	SHEET NO.
64	D9 BRIDGE REPAIR 2017-4	JEFFERSON	10	5
ILLINOIS FED. AID PROJECT			CONTRACT NO. 78559	



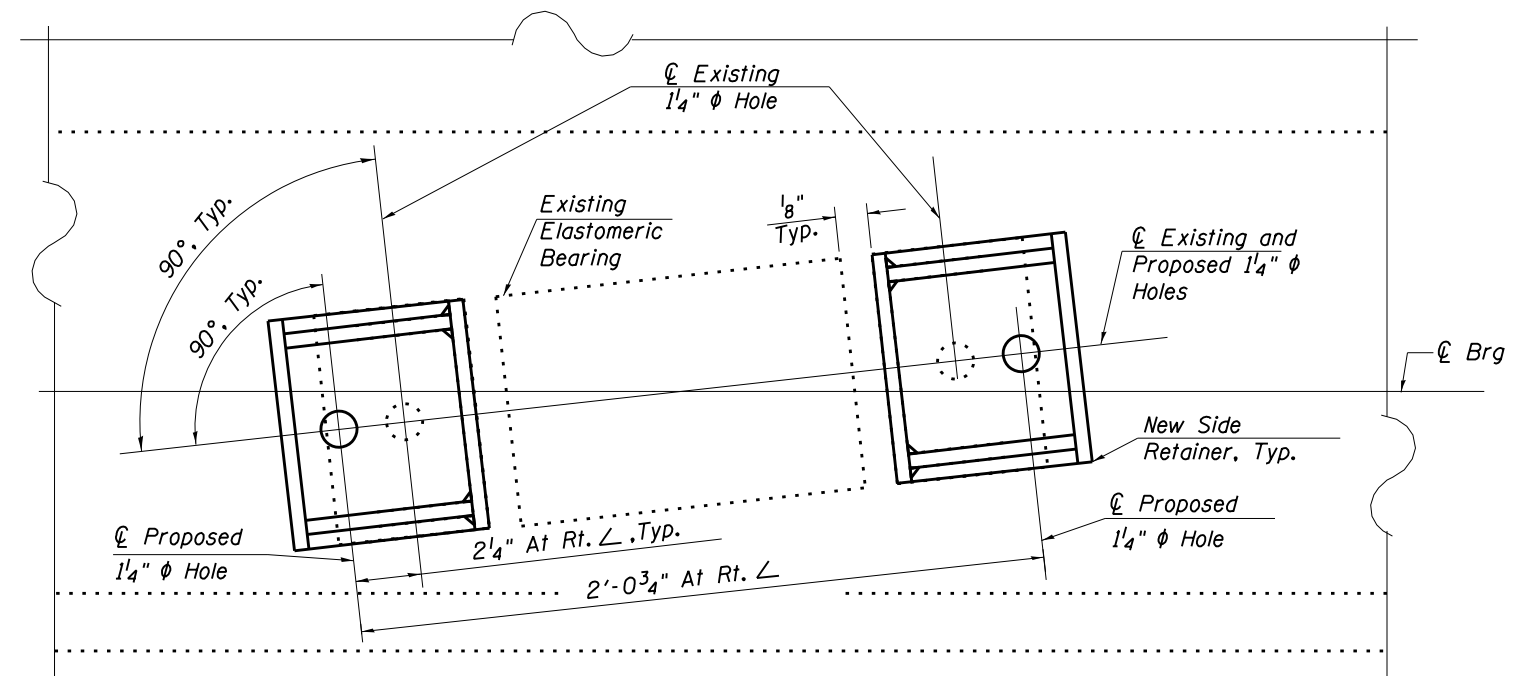
ELEVATION
SECTION A-A
EXISTING TYPE I ELASTOMERIC EXPANSION BEARINGS

GIRDER REACTIONS

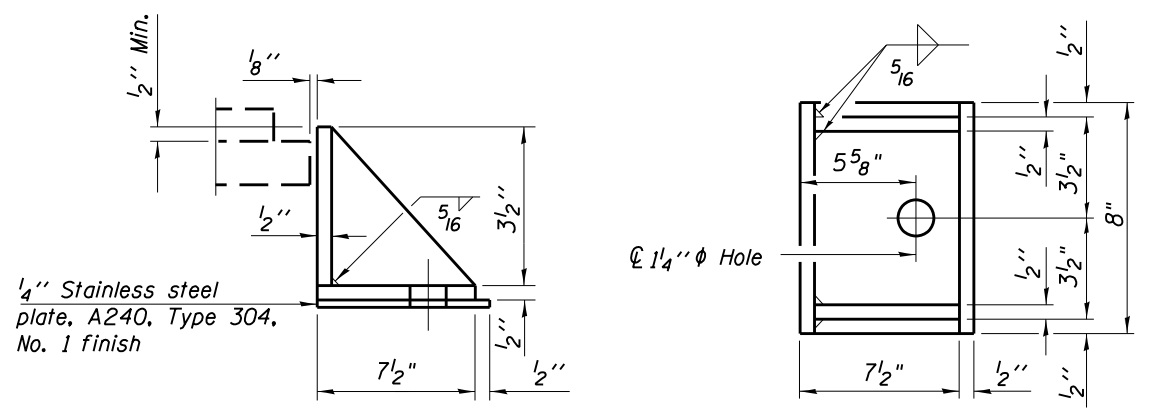
From Existing Plans

R DL	(KIP)	21.8
R LL	(KIP)	37.1
R IMP	(KIP)	10.6
R (TOTAL)	(KIP)	69.49

Notes:
Diaphragm removal and reinstallation may be required to facilitate drilling holes. Cost included with Furnishing and Erecting Structural Steel.
Prior to ordering any material, the Contractor shall verify in the field all bearing height and shim thickness dimensions. Min. jack capacity = 35 Tons.
Anchor bolts shall be ASTM F1554 all-thread (or an Engineer-approved alternate material) of the grade(s) and diameter(s) specified. ASTM A307 Grade C anchor bolts may be used in lieu of ASTM F1554 Grade 36 (Fy=36ksi). The corresponding specified grade of AASHTO M314 anchor bolts may be used in lieu of ASTM F1554.
Drilled and set anchor bolts shall be installed according to Article 521.06 of the Standard Specifications.
All structural steel shall conform to AASHTO Classification M-270 Gr. 36, unless otherwise noted.
Fasteners shall be high strength bolts.
If the analysis submitted to the Contractor for the jacking/temporary support system to be used shows temporary stiffeners are required to prevent web crippling or buckling, the stiffeners shall be steel and bolted to the web. If stiffeners are not required, hardwood timbers shall be installed tightly between the top and bottom flange to prevent flange rotation.
New side retainers, anchor bolts, nuts, and washers shall be galvanized according to AASHTO M111 or M232 as applicable.
Shim plates shall not be placed under bearing assembly.
Dimensions of existing bearings were converted from metric dimensions shown in original construction plans.



ANCHOR BOLT LAYOUT

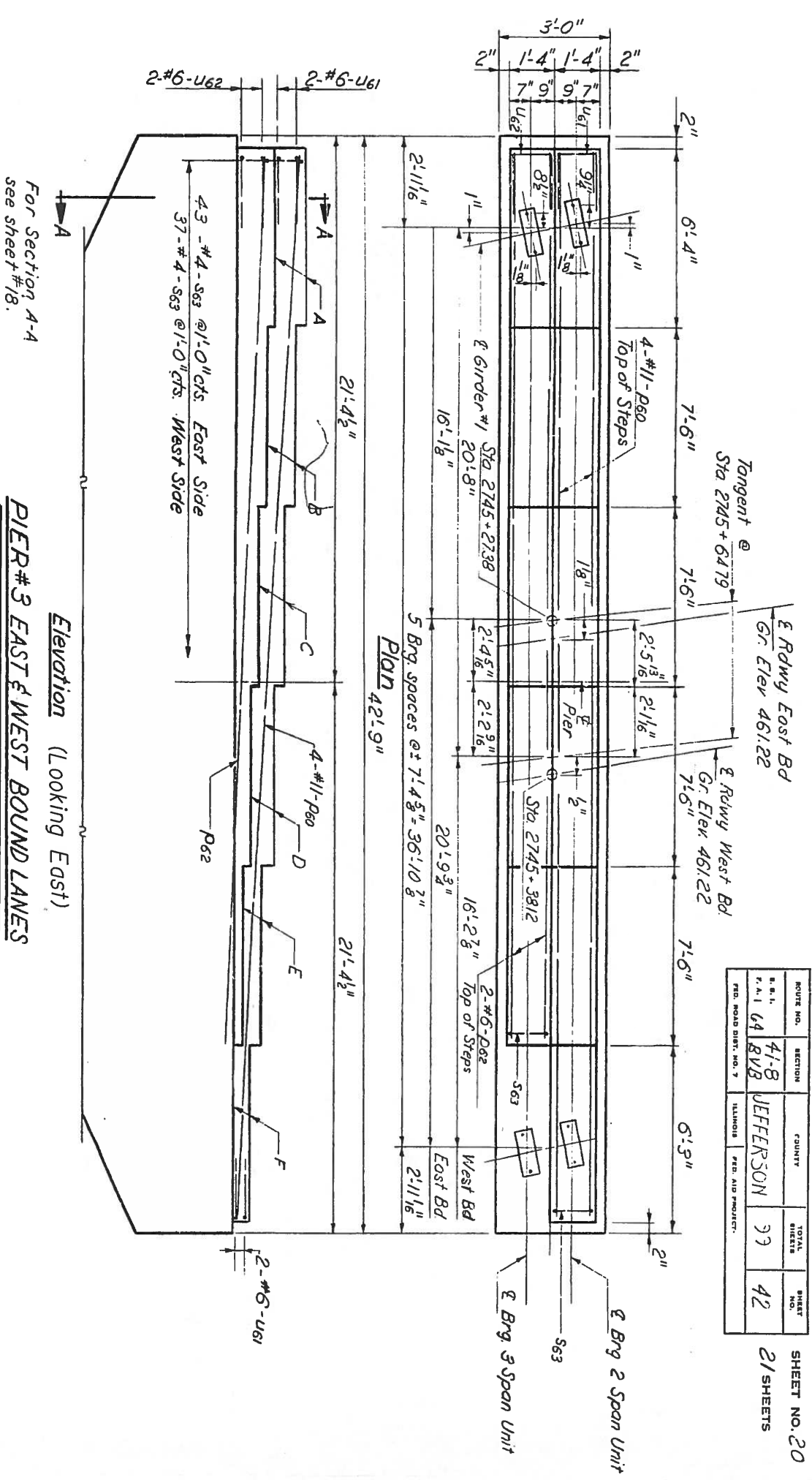


NEW SIDE RETAINER

(2 Required Each Bearing, 4 Total)
Equivalent rolled angle with stiffeners will be allowed in lieu of welded plates.

ROUTE NO.	SECTION	COUNTY	TOTAL SHEETS	SHEET NO.
R.I. 41-B F.A.1 64 R.V.B	JEFFERSON	JEFFERSON	33	42

SHEET NO. 20
21 SHEETS



Elevation (Looking East)
PIER#3 EAST & WEST BOUND LANES
FOR INFORMATION ONLY

For Section A-A
see sheet #18.

FILE NAME : p:\1188\FED\INTERCAL\1188\p01\PI001\001.dwg	USER NAME : gauravk	DESIGNED : -	REVISOR : -
PROJECT : 1188\FED\INTERCAL\1188\p01\PI001\001.dwg	PROJECT : 1188\FED\INTERCAL\1188\p01\PI001\001.dwg	CHECKED : -	REVISOR : -
PLOT SCALE : 1/2" = 1'-0"	PLOT DATE : 1/24/2017	DATE : -	REVISOR : -
STATE OF ILLINOIS DEPARTMENT OF TRANSPORTATION			
SCALE : -	SHEET : 3	OF : -	SHEETS : -
SECTION : 09 BRIDGE REPAIR 2017-4	COUNTY : JEFFERSON	TOTAL SHEETS : 10	SHEET NO. : 10
CONTRACT NO. 78559			