

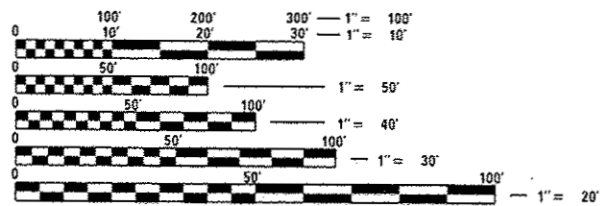
STATE OF ILLINOIS  
DEPARTMENT OF TRANSPORTATION  
**PROPOSED  
HIGHWAY PLANS**  
ROUTE: VARIOUS  
SECTION: 2017-013-1  
WETLAND AREAS MANAGEMENT  
VARIOUS COUNTIES

C-91-225-17

RTE	SECTION	COUNTY	TOTAL SHEETS	SHEET NO.
VAR	2017-013-1	VARIOUS	17	1
		ILLINOIS	CONTRACT NO. 62F14	

FOR INDEX OF SHEETS, SEE SHEET NO. 2

IMPROVEMENTS ARE AT VARIOUS  
LOCATIONS WITHIN DISTRICT ONE

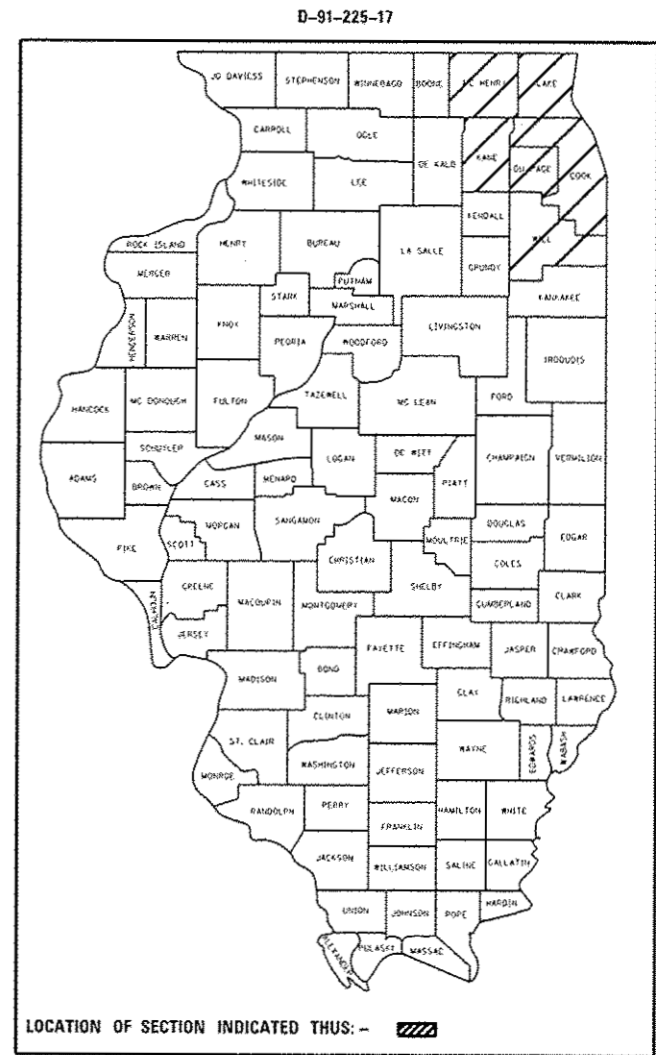
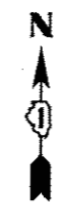
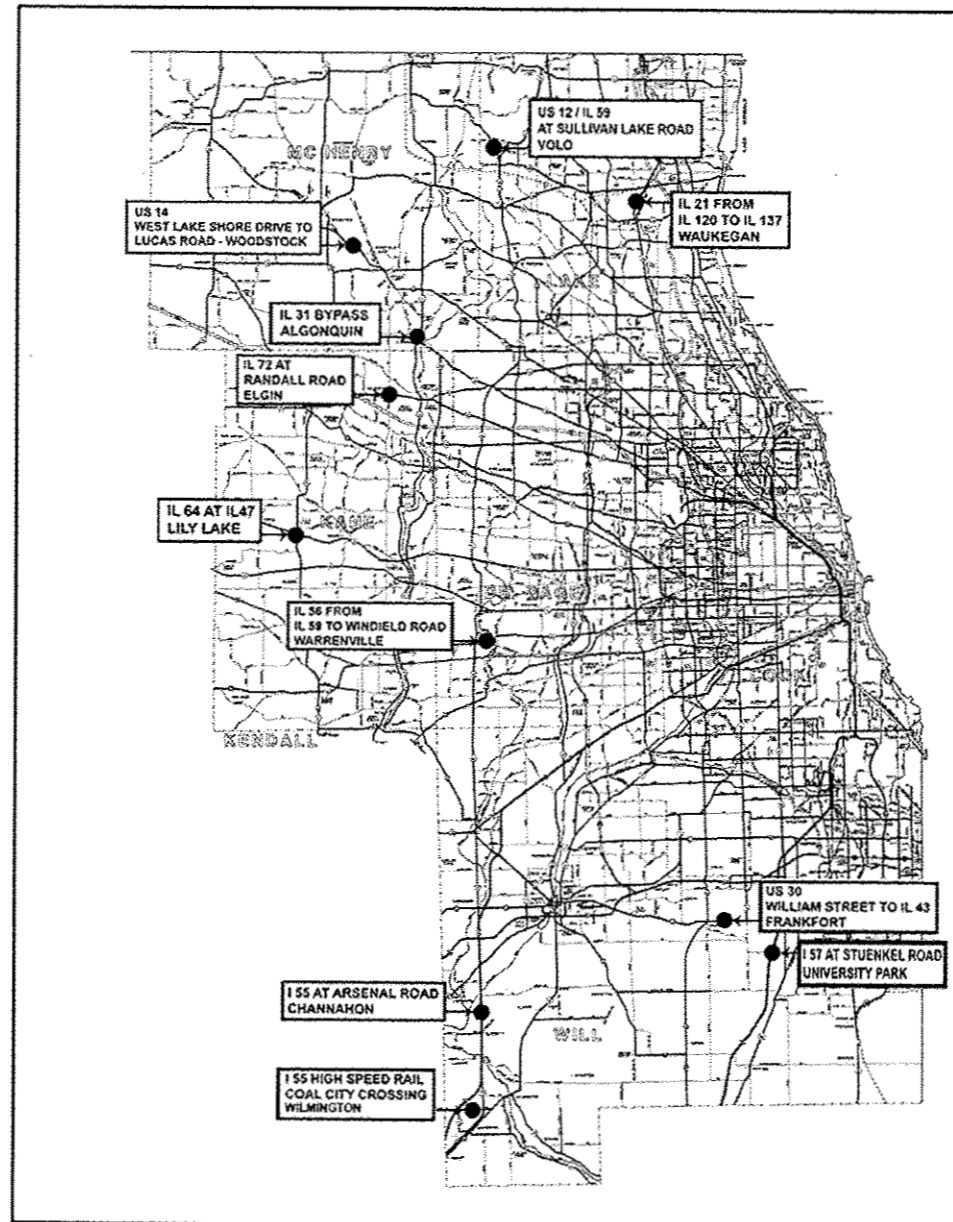


FULL SIZE PLANS HAVE BEEN PREPARED USING STANDARD ENGINEERING SCALES. REDUCED SIZED PLANS WILL NOT CONFORM TO STANDARD SCALES. IN MAKING MEASUREMENTS ON REDUCED PLANS, THE ABOVE SCALES MAY BE USED.

J.U.L.I.E.  
JOINT UTILITY LOCATION INFORMATION FOR EXCAVATION  
1-800-892-0123  
OR 811

PROJECT ENGINEER: JAMES STUMPNER  
PROJECT MANAGER: GIOVANNA ZAFFINA  
(847) 705-4172

CONTRACT NO. 62F14



STATE OF ILLINOIS  
DEPARTMENT OF TRANSPORTATION

SUBMITTED April 13 2017  
James Stumpner REGIONAL ENGINEER  
May 16 2017  
Maureen M. Addis, P.E. ENGINEER OF DESIGN AND ENVIRONMENT  
Maureen M. Addis 2  
DIRECTOR OF PROGRAM DEVELOPMENT

**PRINTED BY THE AUTHORITY  
OF THE STATE OF ILLINOIS**

**SHEET NO.**

**DESCRIPTION**

- 1 COVER SHEET
- 2 INDEX OF SHEETS, GENERAL NOTES, & STATE STANDARDS.
- 3 SUMMARY OF QUANTITIES
- 4 SAMPLE WORK ORDER
- 5 LOCATION MAP - IL-55 AT ARSENAL RD, CHANNAHON
- 6 LOCATION MAP - I-55 HIGH SPEED RAIL RD - COAL CITY ROAD CROSSING, WILMINGTON
- 7 LOCATION MAP - I-57 AT STUENKEL RD, UNIVERSITY PARK
- 8 LOCATION MAP - US 12 / IL 59 AT SULLIVAN LAKE RD, VOLO
- 9 LOCATION MAP - US 14 - WEST LAKE SHROE DR TO LUCAS
- 10 LOCATON MAP - IL 21 FROM IL 120 TO IL 137, WAUKEGAN
- 11 LOCATON MAP - US 30 - WILLIAMS ST TO IL 43, FRANKFORT
- 12 LOCATION MAP - IL 31 (ALCONQUIN BYPASS), MCHENRY COUNTY
- 13 LOCATION MAP - IL 56 FROM IL 59 TO WINFIELD RD, WARRENVILLE
- 14 LOCATION MAP - IL 64 AT IL 47, LILY LAKE
- 15 LOCATION MAP - IL 72 AT RANDALL RD, ELGIN
- 16 TC-10 TRAFFIC CONTROL AND PROTECTION FOR SIDE ROADS, INTERSECTIONS, AND DRIVEWAYS
- 17 TC-17 TRAFFIC CONTROL FOR FREEWAY SHOULDER CLOSURES AND PARTIAL RAMP CLOSURES

**GENERAL NOTES**

- ENGINEER MAY PROVIDE IDOT PURCHASED HERBICIDE TO BE TANK MIXED AT NO ADDITIONAL COST TO DEPARTMENT.
- RANDOM SPOT CHECK INSPECTIONS BY THE ENGINEER WILL OCCUR TO VERIFY WEED CONTROL CALIBRATION RATES.
- PERENNIAL PLANTS SHALL BE INSTALLED AS DIRECTED BY THE ENGINEER WITH 7 DAY NOTICE TO CONTRACTOR.
- PERENNIAL PLANTS SPECIES AND QUANTITIES WILL VARY BASED ON LOCATION, PERFORMANCE, AND 404 WETLAND PERMIT REQUIREMENTS. EXACT QUANTITIES AND VARIETIES OF PLUGS WILL BE PROVIDED ON AN AS-NEEDED BASIS DIRECTED BY THE ENGINEER.
- INTERSEEDING, CLASS 4B (MODIFIED) AND INTERSEEDING, CLASS 5A (MODIFIED) WILL BE MECHANICALLY DRILLED DURING WINTER MONTHS WHEN PLANTING SURFACE IS FROZEN, OR AS DIRECTED BY ENGINEER.

**STATE STANDARDS**

- 701001 - 02      701006 - 05
- 701101 - 05      701106 - 02
- 701201 - 04
- 701301 - 04
- 701421 - 08
- 701501 - 06
- 701601 - 09
- 701901 - 06

DESIGNED	REVISOR
DRAWN	REVISION
CHECKED	REVISION
DATE	REVISION

STATE OF ILLINOIS  
DEPARTMENT OF TRANSPORTATION

INDEX OF SHEETS, GENERAL NOTES, & STATE STANDARDS

F.A.T. R.T.E.	SECTION	COUNTY	TOTAL SHEET NO.
VAR	2017-013-1	VARIOUS	17 2
			CONTRACT NO. 62F14

SUMMARY OF QUANTITIES				CONSTRUCTION TYPE CODE			SUMMARY OF QUANTITIES				CONSTRUCTION TYPE CODE		
CODE NO	ITEM	UNIT	TOTAL QUANTITIES	CONTRACT MAINTENANCE 100% 0031 URBAN	STATE 100% 0031 URBAN		CODE NO	ITEM	UNIT	TOTAL QUANTITIES	CONTRACT MAINTENANCE 100% 0031 URBAN	STATE 100% 0031 URBAN	
X200000	WEED CONTROL, NATIVE LANDSCAPE REMEDIATION	UNIT	150	0	150		X250332	INTERSEEDING, CLASS 5A (MODIFIED)	ACRE	5	5	0	
*20101700	SUPPLEMENTAL WATERING	UNIT	10	0	10								
*25000750	MOWING	ACRE	200	0	200								
*67100100	MOBILIZATION	L. SUM	1	0	1								
*K0013000	PERENNIAL PLANTS, PRAIRIE TYPE, 2" DIAMETER BY 4" DEEP PLUG	UNIT	50	0	50								
*K0013030	PERENNIAL PLANTS, WETLAND TYPE, 2" DIAMETER BY 4" DEEP PLUG	UNIT	150	0	150								
*K0029614	WEED CONTROL, AQUATIC	GALLON	200	0	200								
*K0029624	WEED CONTROL, TEASEL	GALLON	150	0	150								
*K1002564	INTERSEEDING (SPECIAL)	ACRE	5	5	0								
*K1003658	MOWING STAKES	EACH	120	0	120								
*X2500500	INTERSEEDING, CLASS 4 (SPECIAL)	ACRE	15	15	0								
*X2503100	MOWING	UNIT	50	0	50								
*X2503315	INTERSEEDING CLASS 4A (MODIFIED)	ACRE	15	15	0								
*X2503318	INTERSEEDING, CLASS 4B (MODIFIED)	ACRE	15	15	0								
*X2503321	INTERSEEDING, CLASS 5 (MODIFIED)	ACRE	10	10	0								

15

STATE OF ILLINOIS  
DEPARTMENT OF TRANSPORTATION

SUMMARY OF QUANTITIES

DESIGNED	REVISION
DRAWN	REVISION
CHECKED	REVISION
DATE	REVISION

SCALE:	SHEET NO. OF SHEETS STA. TO STA.	F.A.T. RT. VAR.	SECTION 2017-013-1	COUNTY COOK	TOTAL SHEETS NO. 17 3
				CONTRACT NO. 62F14	



**Illinois Department of Transportation**

Contract Number: 62F14  
Work Order #: \_\_\_\_\_  
Route: \_\_\_\_\_

Standard 30-day application		
Cook	DuPage	Kane
Lake	McHenry	Will

Specialized 10-day spot spray	
Work Order Prepared By	Team Section

**Location:**


WORK INCLUDED IN THIS WORK ORDER			
Item	Est. Quantity Units	Priority Multiplier	Total Units
20101700- Supplemental Watering			
25000750- Mowing (ACRE)			
X2503100- Mowing (UNIT)			
K1003658- Mowing stakes			
K0013000- Perennial Plants, Prairie Type			
K0013030- Perennial Plants, Wetland Type			
K0029614- Weed Control, Aquatic			
K0029624- Weed Control, Teasel			
X0325222- Weed Control, Native Remediation			
X2500500- Interseeding, Class 4 (Special)			
X2503315- Interseeding, Class 4A (Modified)			
X2503318- Interseeding, Class 4B (Modified)			
X2503321- Interseeding, Class 5 (Modified)			
X2503323- Interseeding, Class 5A (Modified)			
K1002564- Interseeding, Special			

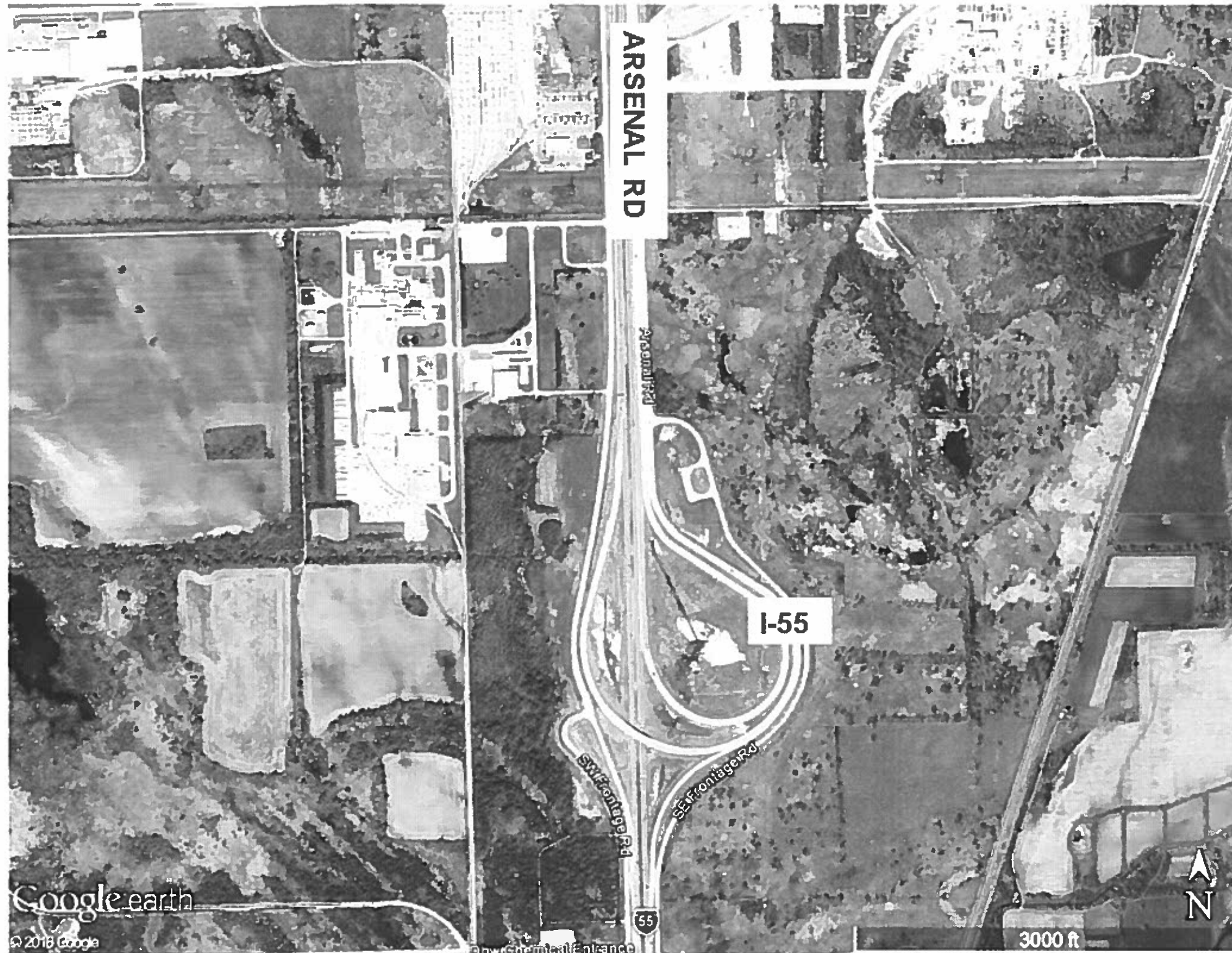
<b>AUTHORIZATION OF WORK ORDER</b>	
Resident Engineer/Technician Signature	Date/Time
Contractor Signature (to acknowledge receipt)	Date/Time

<b>APPROVED PERSONNEL (RE USE ONLY)</b>	
Name	License Number

<b>CERTIFICATION OF COMPLETION</b>	
Contractor Signature	Date/Time

<b>ACCEPTANCE OF COMPLETED WORK</b>	
Resident Engineer/Technician Signature	Date/Time

GENERAL LOCATION MAP  
I-55 AT ARSENAL RD, CHANNAHON IL



FILE NAME	USER NAME	DESIGNED	REVISED	STATE OF ILLINOIS DEPARTMENT OF TRANSPORTATION	I-55 AT ARSENAL RD, CHANNAHON IL	F.A. RTE.	SECTION	COUNTY	TOTAL SHEETS	SHEET NO.	
pw: \\IL084EBID\HTEG\Illinois.gov\PI\DOT\Documents\1001\Offices\District 1\Projects\Map	zaffing	GRANN	REVISED			VAR.	2017-013-1	VARIOUS	17	5	
PLOT SCALE = 100.0000 in.	CHECKED	REVIS	REVISED			CONTRACT NO. 62F14					
PLOT DATE = 4/13/2017	DATE	REVIS	REVISED			ILLINOIS FED. AID PROJECT					
Default				SCALE:	SHEET OF SHEETS	STA.	TO STA.				

**GENERAL LOCATION MAP  
I-55 HIGH SPEED RAIL - COAL CITY ROAD CROSSING, WILMINGTON IL**



FILE NAME	USER NAME	DESIGNED	REVISED	<b>STATE OF ILLINOIS DEPARTMENT OF TRANSPORTATION</b>	<b>I-55 HIGH SPEED RAIL - COAL CITY CROSSING, WILMINGTON IL</b>		F.A. RTE.	SECTION	COUNTY	TOTAL SHEETS	SHEET NO.		
Default	zaffing	DRAWN	REVISED				VAR.	2017-013-1	VARIOUS	17	6		
		CHECKED	REVISED				SCALE: SHEET OF SHEETS STA. TO STA.		ILLINOIS FED. AID PROJECT				
		DATE	REVISED				CONTRACT NO. 62F14						



GENERAL LOCATION MAP  
 US 12 /IL 59 AT SULLIVAN LAKE RD, VOLO IL



FILE NAME *	USER NAME * zaffinag	DESIGNED *	REVISED *	<b>STATE OF ILLINOIS DEPARTMENT OF TRANSPORTATION</b>	<b>US 12 /IL 59 AT SULLIVAN LAKE RD, VOLO IL</b>		F.A. RTE.	SECTION	COUNTY	TOTAL SHEET	
p:\v\l\084EBID\HTEG\Illinois\go\p\WIDOT\Do	uments\DOT Offices\District 3\Projects\Ho	ORAWN CADD\Structures\Training 2017	REVISED * zaffinag				VAR.	2017-013-1	VARIOUS	17	8
Default	PLOT SCALE * 100.0000 / in.	CHECKED *	REVISED *				<b>CONTRACT NO. 62F14</b>				
	PLOT DATE * 4-13-2017	DATE *	REVISED *				ILLINOIS FED. AID PROJECT				
				SCALE:	SHEET	OF	SHEETS	STA.	TO	STA.	

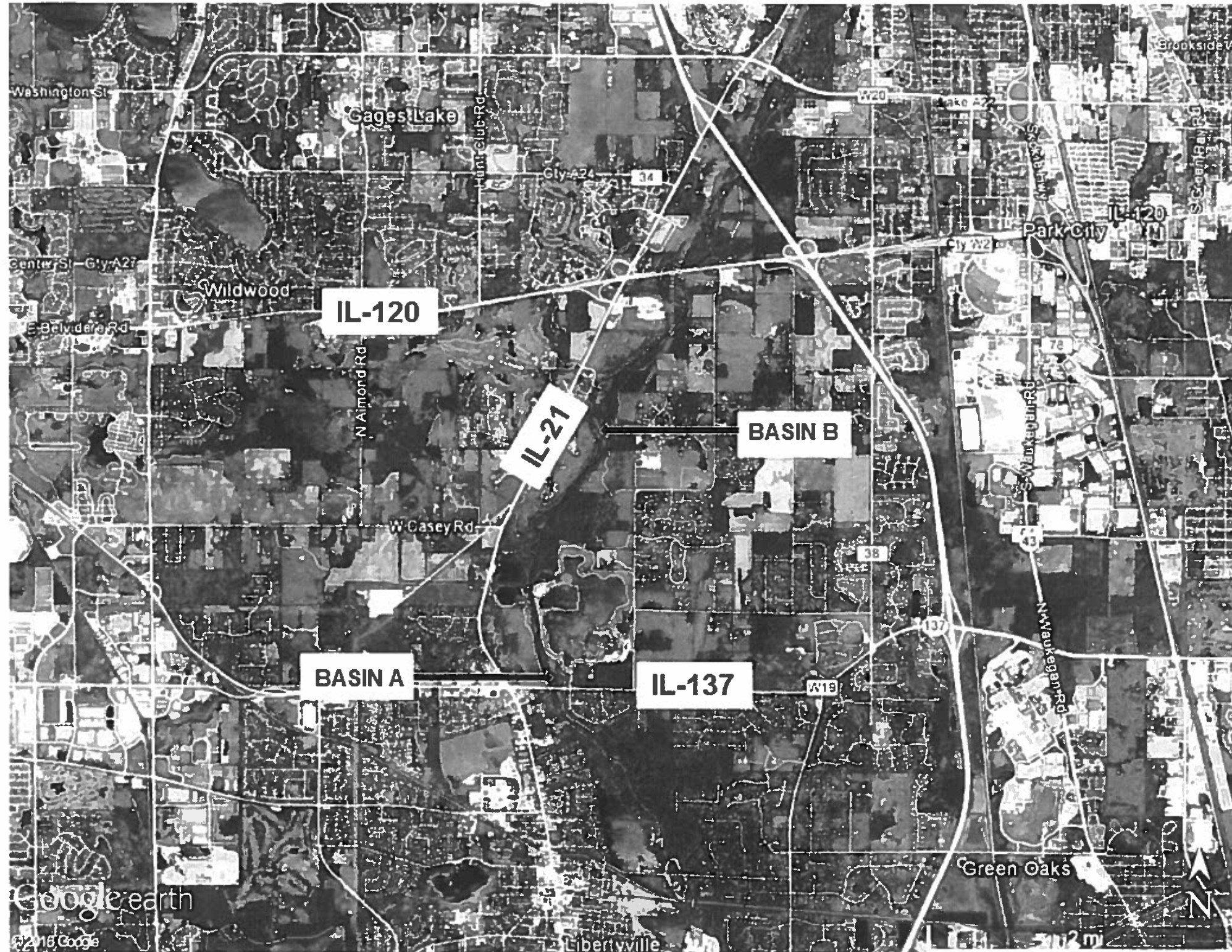


GENERAL LOCATION MAP  
 US 14 (WEST LAKE SHORE DRIVE TO LUCAS), WOODSTOCK IL



FILE NAME * p:\11\084EBID\INTEG.illinois.gov\PW\DOT-10	USER NAME * zaffinag	DESIGNED - DRAWN CAD/CADD Structures Training 2017	REVISED - REVISED Pwww.dgn	<b>STATE OF ILLINOIS DEPARTMENT OF TRANSPORTATION</b>	<b>US 14 (WEST LAKE SHORE DRIVE TO LUCAS) - WOODSTOCK IL</b>		F.A. RTE.	SECTION	COUNTY	TOTAL SHEETS	SHEET NO.
Comments: 1007 Offices District 1 Projects Ma	PLOT SCALE * 100.0000 in.	CHECKED -	REVISED -		VAR.	2017-013-1	VARIOUS	17	9		
Default	PLOT DATE * 4/13/2017	DATE -	REVISED -		SCALE: SHEET OF SHEETS STA. TO STA.		CONTRACT NO. 62F14		ILLINOIS FED. AID PROJECT		

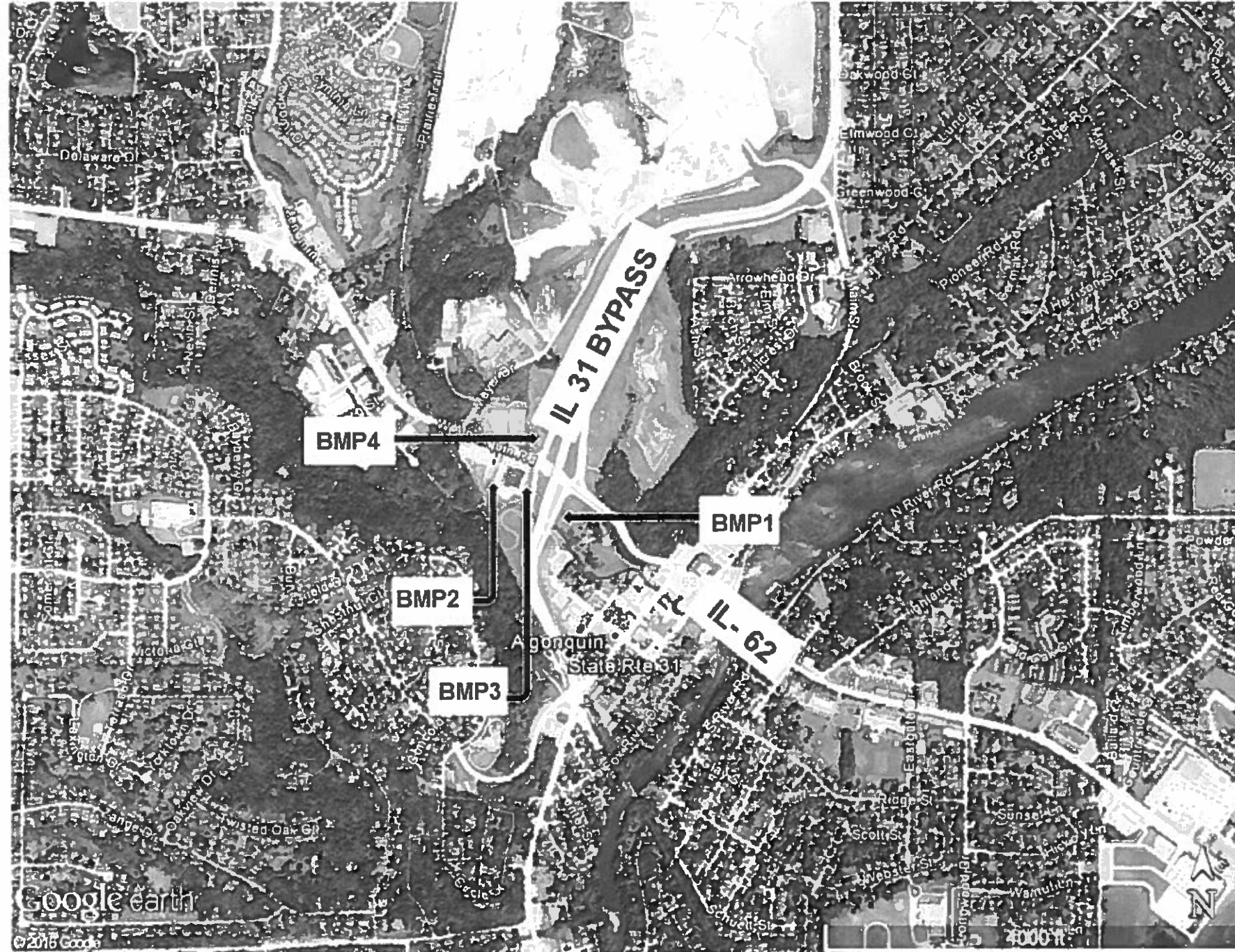
GENERAL LOCATION MAP  
 IL 21 (IL 120 - IL 137), WAUKEGAN IL



FILE NAME *	USER NAME * zaffinag	DESIGNED -	REVISED -	<b>STATE OF ILLINOIS</b> <b>DEPARTMENT OF TRANSPORTATION</b>	<b>IL 21 (IL 120 - IL 137), WAUKEGAN IL</b>		F.A. RTE.	SECTION	COUNTY	TOTAL SHEETS	SHEET NO.
PROJECT * IL084EBID\ITEC\illinois.gov\PI\DOT Do	PROJECTS * DOT Offices District 1 Projects Pa	DRAWN CADData\Structures Training 2017	REVISED * sps.dgn				VAR.	2017-013-1	VARIOUS	17	10
PLOT SCALE * 100.0000 / in.	CHECKED -	REVISED -	REVISED -				CONTRACT NO. 62F14				
DATE -	DATE -	REVISED -	REVISED -				(ILLINOIS) FED. AID PROJECT				
Default	PLOT DATE * 4-13-2017	DATE -	REVISED -	SCALE:	SHEET	OF	SHEETS	STA.	TO	STA.	

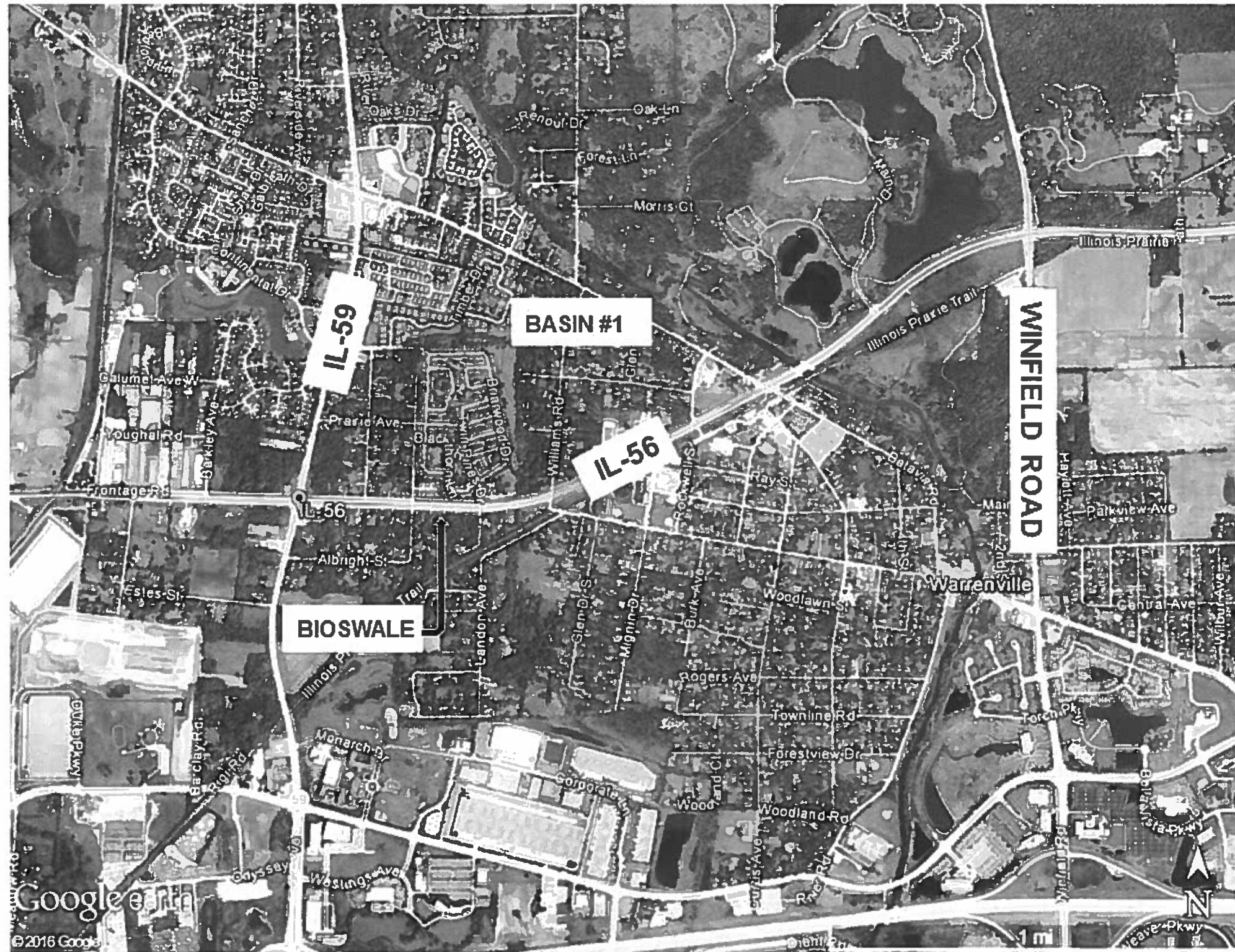


**GENERAL LOCATION MAP  
IL 31 (ALGONQUIN BYPASS), MCHENRY COUNTY IL**



FILE NAME : p:\11084EB\INTEG.all\mchcgo\p\DOT Doc	USER NAME : zaffanag	DESIGNED : -	REVISED : -	<b>STATE OF ILLINOIS DEPARTMENT OF TRANSPORTATION</b>	<b>IL 31 (ALGONQUIN BYPASS), MCHENRY COUNTY IL</b>		F.A. RTE.	SECTION	COUNTY	TOTAL SHEETS	SHEET NO.
PROJECT : 1001 Offices (District 1) Projects Ho	DRAWN : C00Data Structures Training 2017	CHECKED : -	REVISED : -				VAR.	2017-013-1	VARIOUS	17	12
PLOT SCALE : 100.0000 / in.	DATE : -	DATE : -	DATE : -		CONTRACT NO. 62F14			ILLINOIS FED. AID PROJECT			
PLOT DATE : 4/13/2017	DATE : -	DATE : -	DATE : -		SCALE:	SHEET	OF	SHEETS	STA.	TO STA.	

GENERAL LOCATION MAP  
 IL 56 (IL 59 TO WINFIELD RD), WARRENVILLE IL



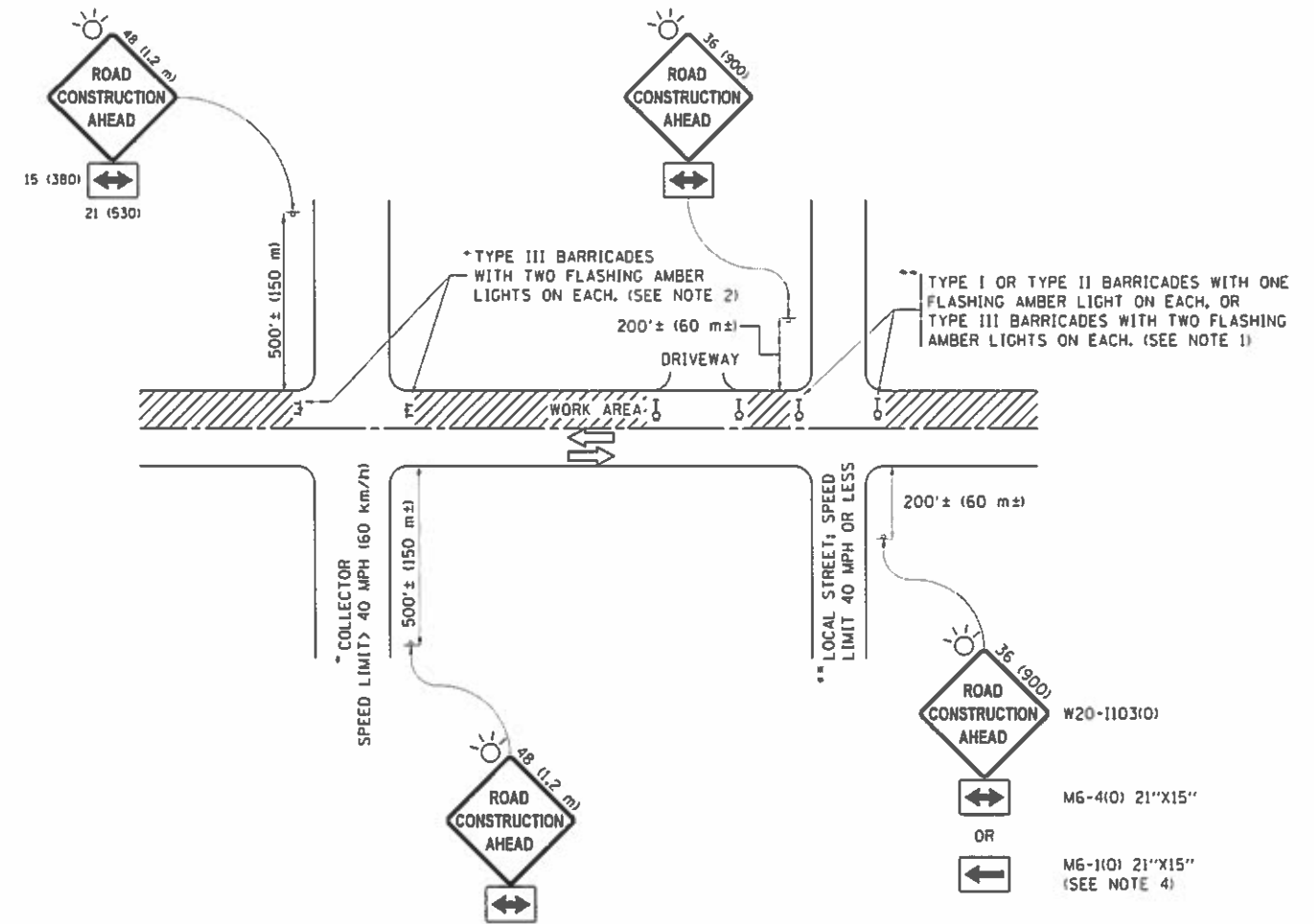
FILE NAME p:\11\084EB\ID\INTEC\Illinois.gov\PW\001\001	USER NAME zaffing	DESIGNED ORANN CAD	REVISED REVISOR	STATE OF ILLINOIS DEPARTMENT OF TRANSPORTATION	IL 56 (IL 59 TO WINFIELD RD) WARRENVILLE IL	F.A. RTE.	SECTION	COUNTY	TOTAL SHEETS	SHEET NO.
	PROJECT 100.0000 / in.	CHECKED DATE	REVISED REVISOR			VAR.	2017-013-1	VARIOUS	17	13
Default	PLOT DATE 4/13/2017	DATE	REVISED	SCALE:	SHEET OF SHEETS STA. TO STA.	ILLINOIS FED. AID PROJECT				



GENERAL LOCATION MAP  
 IL 72 AT RANDALL RD, ELGIN IL



FILE NAME : p:\11\084EBI\INTEG\11\1101101\1101101\01	USER NAME : zoffinag	DESIGNED : ORANN CROData Structures Training 2017	REVISED : REVISOR Message	<b>STATE OF ILLINOIS DEPARTMENT OF TRANSPORTATION</b>	<b>IL 72 AT RANDALL RD, ELGIN IL</b>	F.A. RTE.:	SECTION	COUNTY	TOTAL SHEETS	SHEET NO.
	PLOT SCALE : 100.0000 "/ in.	CHECKED :	REVISED :			VAR.	2017-013-1	VARIOUS	17	15
Default	PLOT DATE : 4/13/2017	DATE :	REVISED :			SCALE: SHEET OF SHEETS STA. TO STA. ILLINOIS FED. AID PROJECT				



**NOTES:**

1. SIDE ROAD WITH A SPEED LIMIT OF 40 MPH (60 km/h) OR LESS AS SHOWN ON THE DRAWING AND AS DIRECTED BY THE ENGINEER:
  - a) ONE "ROAD CONSTRUCTION AHEAD" SIGN 36 x 36 (900x900) WITH A FLASHER MOUNTED ON IT APPROXIMATELY 200' (60 m) IN ADVANCE OF THE MAIN ROUTE.
  - b) THE CLOSED PORTION OF THE MAIN ROUTE SHALL BE PROTECTED BY BLOCKING WITH TYPE I, TYPE II OR TYPE III BARRICADES, 1/3 OF THE CROSS SECTION OF THE CLOSED PORTION.
2. SIDE ROAD WITH A SPEED LIMIT GREATER THAN 40 MPH (60 km/h) AS SHOWN ON THE DRAWING AND AS DIRECTED BY THE ENGINEER:
  - a) ONE "ROAD CONSTRUCTION AHEAD" SIGN 48 x 48 (1.2 m x 1.2 m) WITH A FLASHER MOUNTED ON IT APPROXIMATELY 500' (150 m) IN ADVANCE OF THE MAIN ROUTE.
  - b) THE CLOSED PORTION OF THE MAIN ROUTE SHALL BE PROTECTED BY BLOCKING WITH TYPE III BARRICADES, 1/2 OF THE CROSS SECTION OF THE CLOSED PORTION.
3. CONES MAY BE SUBSTITUTED FOR BARRICADES OR DRUMS AT HALF THE SPACING DURING DAY OPERATIONS. CONES SHALL BE A MINIMUM OF 28 (710) IN HEIGHT.
4. WHEN THE SIDE ROAD LIES BETWEEN THE BEGINNING OF THE MAINLINE SIGNING AND THE WORK ZONE, A SINGLE HEADED ARROW (M6-1) SHALL BE USED IN LIEU OF THE DOUBLE HEADED ARROW (M6-4).
5. WHEN WORK IS BEING PERFORMED ON A SIDE ROAD OR DRIVEWAY, FOLLOW THE APPLICABLE STANDARD(S). THE DIRECTIONAL ARROW (M6-1 OR M6-4) SHALL BE COVERED OR REMOVED WHEN NO LONGER CONSISTENT WITH THE TRAFFIC CONTROL SET-UP.
6. ADVANCE WARNING SIGNS ARE TO BE OMITTED ON DRIVEWAYS UNLESS OTHERWISE SPECIFIED IN THE PLANS OR BY THE ENGINEER.
7. THE TRAFFIC CONTROL AND PROTECTION FOR SIDE ROADS, INTERSECTIONS, AND DRIVEWAYS SHALL BE INCLUDED IN THE COST OF SPECIFIED TRAFFIC CONTROL STANDARDS OR ITEMS.

All dimensions are in inches (millimeters) unless otherwise shown.

FILE NAME	USER NAME	DESIGNED	REVISED
PROJECT	PROJECT	PROJECT	PROJECT
DATE	DATE	DATE	DATE

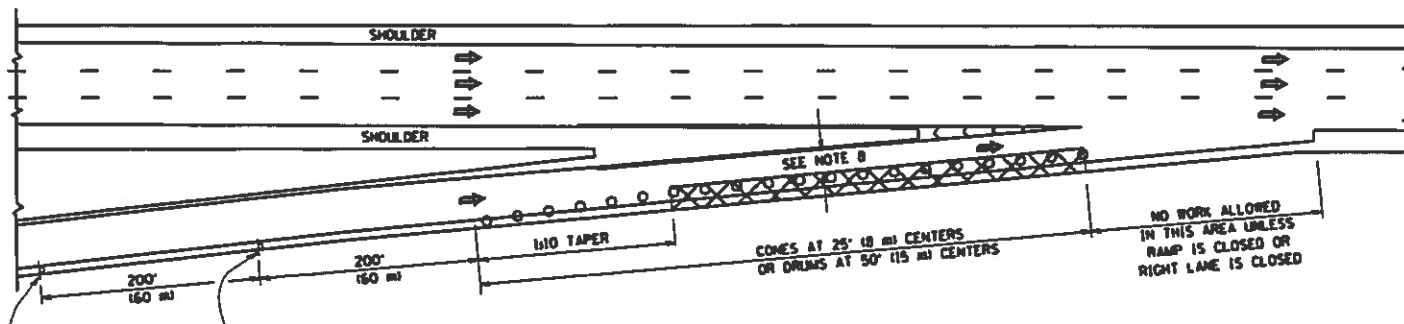
**STATE OF ILLINOIS  
DEPARTMENT OF TRANSPORTATION**

<b>TRAFFIC CONTROL AND PROTECTION FOR SIDE ROADS, INTERSECTIONS, AND DRIVEWAYS</b>			
SCALE: NONE	SHEET 1	OF 1	SHEETS STA. TO STA.
F.A. RTE.	SECTION	COUNTY	TOTAL SHEET NO.
VAR	2017-013-1	VARIOUS	17 16
TC-10		CONTRACT NO. 62F14	
ILLINOIS FED. AID PROJECT			

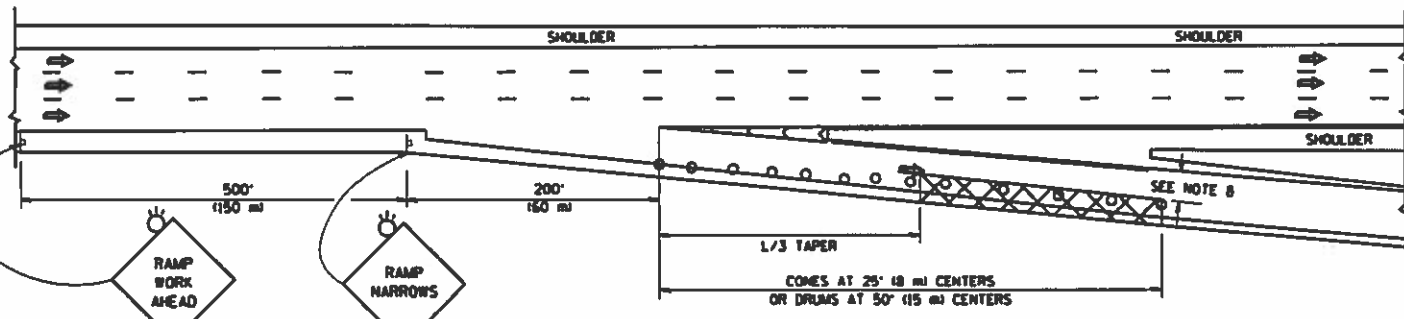


**PARTIAL RAMP CLOSURE DETAILS**

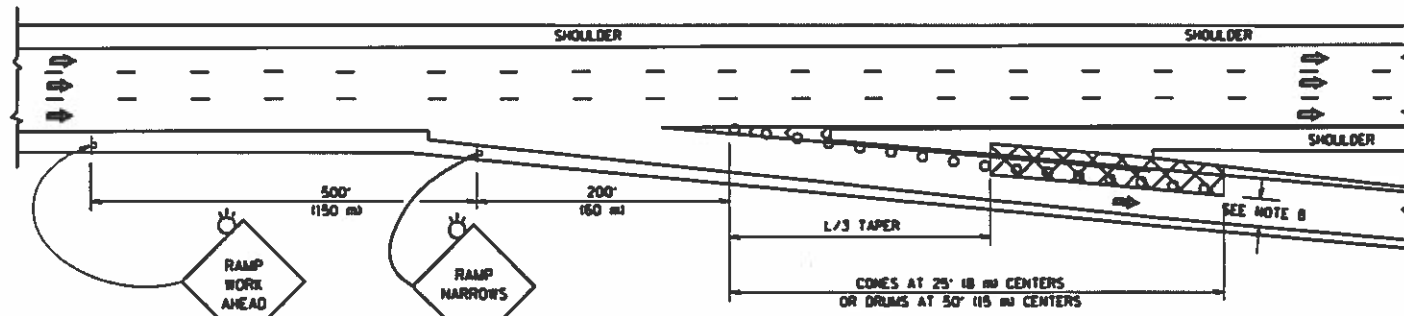
**SHOULDER CLOSURE DETAILS**



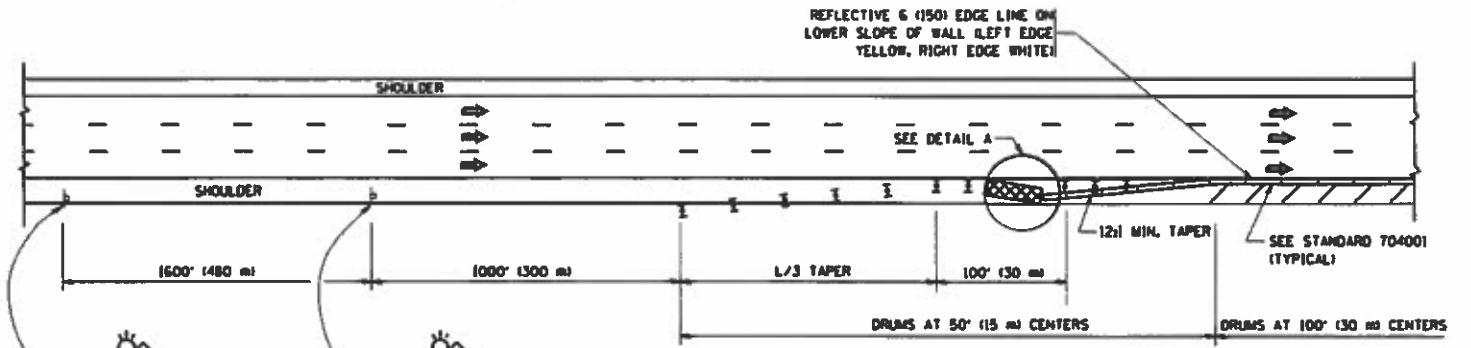
**TYPICAL ENTRANCE RAMP**



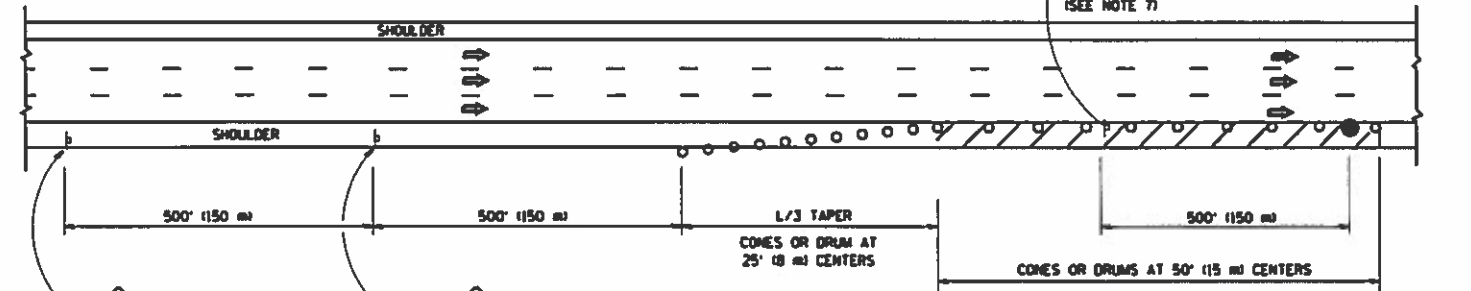
**TYPICAL EXIT RAMP**



**TYPICAL EXIT RAMP**

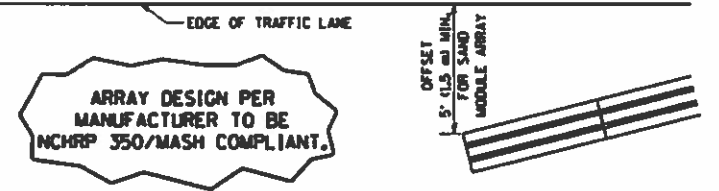


**PERMANENT SHOULDER CLOSURE**



**DAYTIME SHOULDER CLOSURE**

THIS DETAIL IS USED WHERE:  
1. VEHICLES, EQUIPMENT, WORKERS OR THEIR ACTIVITIES ENDOUCH IN AN AREA CLOSER THAN 15' (4.5 m) TO THE EDGE OF PAVEMENT FOR A PERIOD IN EXCESS OF 15 MINUTES.



ARRAY DESIGN PER MANUFACTURER TO BE NCHRP 350/MASH COMPLIANT.

**DETAIL "A" IMPACT ATTENUATOR, TEMPORARY (SEE NOTE 5)**

ALL DIMENSIONS ARE IN INCHES (MILLIMETERS) UNLESS OTHERWISE SHOWN.

**SYMBOLS**

- ACTIVE WORK AREA
- SIGN ON PORTABLE OR PERMANENT SUPPORT
- FLAGGER WITH CONTROL SIGN
- TYPE II BARRICADE OR DRUM WITH STEADY BURN MONO-DIRECTIONAL LIGHT
- CONE, DRUM OR BARRICADE
- IMPACT ATTENUATOR OF TYPE AND TEST LEVEL SPECIFIED

**GENERAL NOTES**

1. THE "L" DISTANCE EQUALS:
 

SPEED LIMIT	FORMULAS
45 mph (80 km/h) OR GREATER	METRIC: $L = 0.65(W)(S)$ ENGLISH: $L = W(S)$

W = WIDTH OF OFFSET IN FEET (METERS)  
S = NORMAL POSTED SPEED MPH (KM/H)
2. PLASTIC DRUMS WITH HIGH PERFORMANCE REFLECTIVE SHEETING AND STEADY BURNING LIGHTS ARE REQUIRED FOR ALL NIGHTTIME CLOSURES.
3. ALL SIGNS SHALL BE POST MOUNTED IF THE CLOSURE TIME EXCEEDS FOUR DAYS.
4. FLASHING LIGHTS SHALL BE USED DURING THE HOURS OF DARKNESS AND SHALL BE INSTALLED ABOVE THE FIRST TWO SETS OF SIGNS.

5. THE IMPACT ATTENUATOR, TEMPORARY IS NOT REQUIRED WHEN THE TEMPORARY CONCRETE BARRIER WALL IS PROTECTED BY OR IS TIED INTO THE EXISTING GIARDRAIL. IF OFFSET IS LESS THAN 5 FEET USE NARROW USE TYPE DEVICE TO MEET NCHRP350/MASH.
6. AUTHORIZATION FROM THE DISTRICT'S BUREAU OF TRAFFIC IS REQUIRED FOR ALL FREEWAY CLOSURES.
7. THE FLAGGER AND FLAGGER SIGN ARE REQUIRED AT THE ABOVE WORK SITES WHEN:
  - a. FOUR OR MORE WORK VEHICLES ENTER THE TRAFFIC LANES IN A ONE HOUR PERIOD.
  - b. THE WORK ACTIVITY REQUIRES FREQUENT ENDOUCHMENT INTO THE LANE OPEN TO TRAFFIC.
 THE FLAGGER SHALL BE STATIONED APPROXIMATELY 100' (130 m) TO 200' (160 m) IN ADVANCE OF THE WORKERS.
8. 12' MIN. WIDTH TANGENT SECTION  
16' MIN. WIDTH CURVE SECTION

FILE NAME: c:\p\work\pedit\l\ayse\01188315\1c17.dwg	USER NAME: l\ayse	DESIGNED: J.A.F. 12-06	REVISED: J.A.F. 12-06	<b>STATE OF ILLINOIS DEPARTMENT OF TRANSPORTATION</b>	<b>TRAFFIC CONTROL DETAILS FOR FREEWAY SHOULDER CLOSURES AND PARTIAL RAMP CLOSURES</b>	F.A. RTE.:	SECTION:	COUNTY:	TOTAL SHEETS:	SHEET NO.:	
		DRAWN: D.W.S.	REVISED: S.P.B. 01-07			VAR:	2017-013-1	VARIOUS	17	17	
		CHECKED:	REVISED: S.P.B. 12-09			SCALE: NONE	SHEET NO. 1 OF 1 SHEETS	STA. TO STA.	CONTRACT NO. 62F14		
		DATE: 11-96	REVISED: M.D. 06-13			FED. ROAD DIST. NO. 1 (ILLINOIS) FED. AID PROJECT					