

CODE NO.	ITEM	UNIT	TOTAL QUANTITY	CONSTRUCTION CODE												
				FEDERAL = 80% STATE = 20% CITY = 0%	FEDERAL = 80% STATE = 20% CITY = 0%	FEDERAL = 80% STATE = 20% CITY = 0%	FEDERAL = 80% STATE = 20% CITY = 0%	FEDERAL = 80% STATE = 20% CITY = 0%	FEDERAL = 80% STATE = 20% CITY = 0%	FEDERAL = 80% STATE = 13.4% CITY = 6.6%	FEDERAL = 80% STATE = 10% CITY = 10%	FEDERAL = 0% STATE = 0% CITY = 100%	FEDERAL = 80% STATE = 20% CITY = 0%	FEDERAL = 0% STATE = 0% CITY = 100%	FEDERAL = 80% STATE = 0% CITY = 20%	
				0003	0010	0010	0004	0004	0004	0021	0021	0021	0021	0021	0028	
				ROADWAY	PROP SN 047-0102	PROP SN 047-2051	PROP SN 047-8802	PROP SN 047-8804	NOISE ABATEMENT WALL	TRAFFIC SIGNALS GAME FARM RD, SYCAMORE RD	TRAFFIC SIGNALS BEECHER RD, CANNONBALL TR, ELDAMAIN RD, CENTER PKWY	TRAFFIC SIGNALS ISABEL RD	US 34 TRAFFIC SIGNALS INTERCONNECT	SIGNAL PRE-EMPTION/ LIGHTING	SHARED USE PATH/ SIDEWALK	
52100510	ANCHOR BOLTS. 3/4"	EACH	22		22											
52100520	ANCHOR BOLTS. 1"	EACH	44		44											
52200020	TEMPORARY SOIL RETENTION SYSTEM	50 FT	1512	770	428	314										
52200100	FURNISHING SOLDIER PILES (HP SECTION)	FOOT	3268				1337	1931								
52200150	DRIVING SOLDIER PILES	FOOT	3268				1337	1931								
52200250	UNTREATED TIMBER LAGGING	50 FT	1189				1142	47								
52200700	PRECAST MODULAR RETAINING WALL	50 FT	177					177								
54001001	BOX CULVERT END SECTIONS, CULVERT NO. 1	EACH	4				4									
542A0220	PIPE CULVERTS. CLASS A, TYPE 1 15"	FOOT	132	132												
542A0223	PIPE CULVERTS. CLASS A, TYPE 1 18"	FOOT	43	43												
542A0235	PIPE CULVERTS. CLASS A, TYPE 1 30"	FOOT	33	33												
542A1063	PIPE CULVERTS. CLASS A, TYPE 2 18"	FOOT	44	44												
542D0211	PIPE CULVERTS. CLASS D, TYPE 1 6"	FOOT	75	75												
54213657	PRECAST REINFORCED CONCRETE FLARED END SECTIONS 12"	EACH	2	2												
54213660	PRECAST REINFORCED CONCRETE FLARED END SECTIONS 15"	EACH	6	6												

STATE OF ILLINOIS
DEPARTMENT OF TRANSPORTATION

SUMMARY OF QUANTITIES

FILE NAME :	USER NAME : woodyer.jp	DESIGNED -	REVISED -
pw:\ll\084EBID\INTEG.illinois.gov\PID01\Documents\ID01 Offices\District 3\Projects\EP08\BROWNO\data\GA0\shgts\EP03507-shc-500.dwg		CHECKED -	REVISED -
		DATE -	REVISED -

F.A.E. RTE. 591	SECTION	COUNTY	TOTAL SHEETS	SHEET NO.
		KENDALL	533	10
			CONTRACT NO. 66993	
ILLINOIS FED. AID PROJECT				

SCALE: _____ SHEET NO. _____ OF _____ SHEETS STA. _____ TO STA. _____

(13R-2)(13 BRIC, (13 BR-1)BR)

14

REW 6-5-17

CODE NO.	ITEM	UNIT	TOTAL QUANTITY	CONSTRUCTION CODE												
				FEDERAL = 80% STATE = 20% CITY = 0%	FEDERAL = 80% STATE = 20% CITY = 0%	FEDERAL = 80% STATE = 20% CITY = 0%	FEDERAL = 80% STATE = 20% CITY = 0%	FEDERAL = 80% STATE = 20% CITY = 0%	FEDERAL = 80% STATE = 20% CITY = 0%	FEDERAL = 80% STATE = 13.4% CITY = 6.6%	FEDERAL = 80% STATE = 10% CITY = 10%	FEDERAL = 0% STATE = 0% CITY = 100%	FEDERAL = 80% STATE = 20% CITY = 0%	FEDERAL = 0% STATE = 0% CITY = 100%	FEDERAL = 80% STATE = 0% CITY = 20%	
				0003	0010	0010	0004	0004	0004	0021	0021	0021	0021	0021	0028	
				ROADWAY	PROP SN 047-0102	PROP SN 047-2051	PROP SN 047-8802	PROP SN 047-8804	NOISE ABATEMENT WALL	TRAFFIC SIGNALS GAME FARM RD, SYCAMORE RD	TRAFFIC SIGNALS BEECHER RD, CANNONBALL TR, ELDAMAIN RD, CENTER PKWY	TRAFFIC SIGNALS ISABEL RD	US 34 TRAFFIC SIGNALS INTERCONNECT	SIGNAL PRE-EMPTION/ LIGHTING	SHARED USE PATH/ SIDEWALK	
* 78008200	POLYUREA PAVEMENT MARKING TYPE I - LETTERS AND SYMBOLS	SO FT	941	941												
* 78008210	POLYUREA PAVEMENT MARKING TYPE I - LINE 4"	FOOT	148248	148248												
* 78008230	POLYUREA PAVEMENT MARKING TYPE I - LINE 6"	FOOT	1156	1156												
* 78008240	POLYUREA PAVEMENT MARKING TYPE I - LINE 8"	FOOT	13745	13745												
* 78008250	POLYUREA PAVEMENT MARKING TYPE I - LINE 12"	FOOT	7989	7989												
* 78008270	POLYUREA PAVEMENT MARKING TYPE I - LINE 24"	FOOT	673	673												
* 78100100	RAISED REFLECTIVE PAVEMENT MARKER	EACH	1385	1385												
* 78100100	RAISED REFLECTIVE PAVEMENT MARKER (BRIDGE)	EACH	8	8												
* 78200005	GUARDRAIL REFLECTORS, TYPE A	EACH	16	16												
* 78200010	BARRIER WALL REFLECTORS, TYPE B	EACH	16	16												
* 78200020	CURB REFLECTORS	EACH	103	103												
* <u>78501000</u>	<u>TERMINAL MARKER - DIRECT APPLIED</u>	EACH	4	4												
* 80500300	SERVICE INSTALLATION, TYPE C	EACH	3							2	1					
* 81028320	UNDERGROUND CONDUIT, PVC, 1" DIA.	FOOT	3176							597	1955	624				

* SPECIALTY ITEM

*(13)R-2(13 BR)C, (13 BR-1)BR

FILE NAME :	USER NAME : woodyrjp	DESIGNED -	REVISED -	STATE OF ILLINOIS DEPARTMENT OF TRANSPORTATION	SUMMARY OF QUANTITIES			F.A.P. RTE.	SECTION	COUNTY	TOTAL SHEETS	SHEET NO.
p:\11084E8IDINTEG.illinois.gov\PI001\Documents\1007 Offices\District 3\Projects\EP03\RYND00\EA0\hgg\EP0307-ht-500.dwg	PLLOT SCALE = 100.0000 / in.	CHECKED -	REVISED -		591		KENDALL	533	17			
PLLOT DATE = 2/2/2017	DATE -	REVISED -			SCALE: _____	SHEET NO. _____ OF _____ SHEETS	STA. _____ TO STA. _____	ILLINOIS FED. AID PROJECT				
CONTRACT NO. 66993												

A REV 6-6-17

REV

006 7 9 039

CODE NO.	ITEM	UNIT	TOTAL QUANTITY	CONSTRUCTION CODE												
				FEDERAL = 80% STATE = 20% CITY = 0%	FEDERAL = 80% STATE = 20% CITY = 0%	FEDERAL = 80% STATE = 20% CITY = 0%	FEDERAL = 80% STATE = 20% CITY = 0%	FEDERAL = 80% STATE = 20% CITY = 0%	FEDERAL = 80% STATE = 20% CITY = 0%	FEDERAL = 80% STATE = 13.4% CITY = 6.6%	FEDERAL = 80% STATE = 10% CITY = 10%	FEDERAL = 0% STATE = 0% CITY = 100%	FEDERAL = 80% STATE = 20% CITY = 0%	FEDERAL = 0% STATE = 0% CITY = 100%	FEDERAL = 80% STATE = 0% CITY = 20%	
				0003	0010	0010	0004	0004	0004	0021	0021	0021	0021	0021	0028	
				ROADWAY	PROP SN 047-0102	PROP SN 047-2051	PROP SN 047-8802	PROP SN 047-8804	NOISE ABATEMENT WALL	TRAFFIC SIGNALS GAME FARM RD, SYCAMORE RD	TRAFFIC SIGNALS BEECHER RD, CANNONBALL TR, ELDAMAIN RD, CENTER PKWY*	TRAFFIC SIGNALS ISABEL RD	US 34 TRAFFIC SIGNALS INTERCONNECT	SIGNAL PRE-EMPTION/LIGHTING	SHARED USE PATH/ SIDEWALK	
* Z0033010	LED SIGNAL FACE RETROFIT, YELLOW ARROW	EACH	48									39	9			
* Z0033012	LED SIGNAL FACE RETROFIT, GREEN ARROW	EACH	48									39	9			
* Z0033043	RE-OPTIMIZE TEMPORARY TRAFFIC SIGNAL SYSTEM	EACH	6								2	3	1			
* Z0033056	OPTIMIZE TRAFFIC SIGNAL SYSTEM	EACH	1											1		
Z0046304	PIPE UNDERDRAINS FOR STRUCTURES 4"	FOOT	995	43	216		285	451								
Z0062456	TEMPORARY PAVEMENT	SO YD	3608	3608												
Ø Z0076600	TRAINEES	Hour	1500	1500												
* Z0073510	TEMPORARY TRAFFIC SIGNAL TIMING	EACH	6								2	3	1			
Ø Z0076604	TRAINEES TRAINING PROGRAM GRADUATE	Hour	1500	1500												
X120011	PRECAST BOX COLVERT END SECTIONS	EACH	1													
* X1400248	FIBER OPTIC CABLE IN CONDUIT, NO. 62.5/125, MM24 SM24	FOOT	8848											8848		
* X8770136	STEEL COMBINATION MAST ARM ASSEMBLY AND POLE 36 FT., SPECIAL	EACH	1								1					
X2300013	BICYCLE RAILING (GROUND MOUNTED)	FOOT	78				78									
X1700014	FORM LINER TEXTURED SURFACE, (SPECIAL)	SO FT	4793				1483	3310								

*NOTE--QUANTITIES FOR ELDAMAIN ROAD IN THE TRAFFIC SIGNAL COLUMN AND THE LIGHTING COLUMN WILL NEED TO BE BROKEN OUT SINCE THE ELDAMAIN ITEMS ARE FUNDED FROM ANOTHER SOURCE

* SPECIALTY ITEM
Ø 0042

*(13R-2)(13 BRIC, (13 BR-1BR)

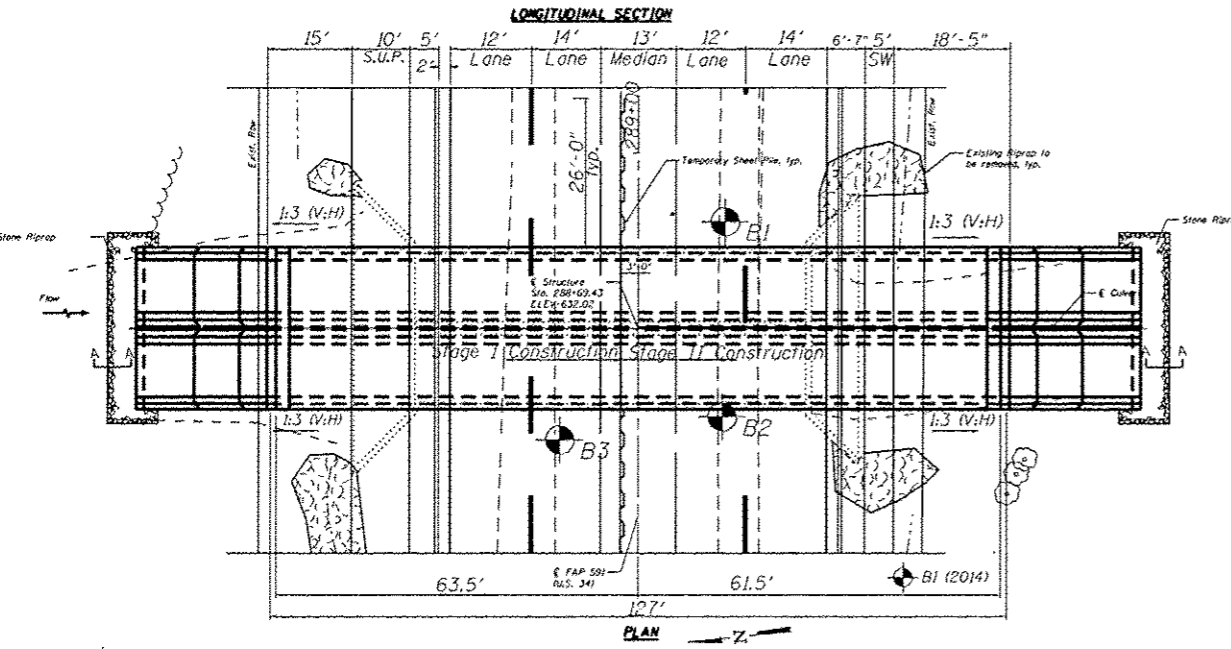
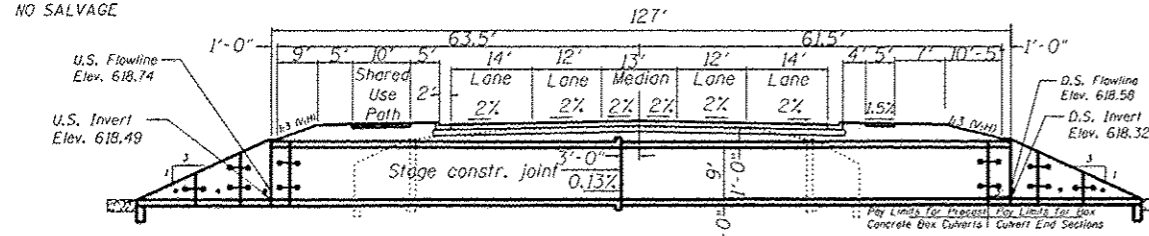
FILE NAME :	USER NAME : braboyce	DESIGNED -	REVISED -	STATE OF ILLINOIS DEPARTMENT OF TRANSPORTATION	SUMMARY OF QUANTITIES			F.A.P. RTE:	SECTION	COUNTY	TOTAL SHEETS	SHEET NO.
c:\pwork\pwork\braboyce\dms31005\EP8	807-ent-SOG.dgn	DRAWN -	REVISED -		591	*	KENDALL	533	25			
PLOT SCALE = 1/8" = 1' / in.	CHECKED -	REVISED -	SCALE: _____		SHEET NO. _____ OF _____ SHEETS	STA. _____ TO STA. _____	CONTRACT NO. 66993		ILLINOIS FED. AID PROJECT			
PLOT DATE = 2/4/2017	DATE -	REVISED -										

REV 6-5-17 REV

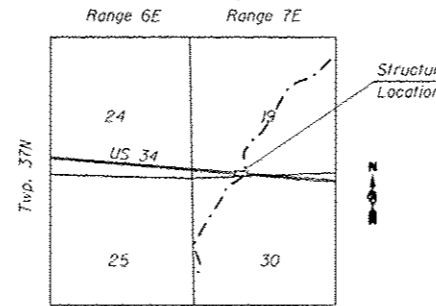
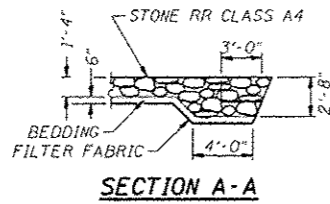
STATE OF ILLINOIS
DEPARTMENT OF TRANSPORTATION

EXISTING STRUCTURE: S.N. 047-2014, F.A. RTE. 591, U.S. 34, SECTION (13)BR STA. 288+69.43.
BUILT IN 1997 AS A TWO CELL 12' x 9' PRECAST CONCRETE BOX CULVERT WITH CAST-IN-PLACE
CONCRETE END SECTIONS AND WING WALLS. THE TOTAL LENGTH OF THE CULVERT
(ALONG THE CREEK CENTERLINE) MEASURES 69'-6". THERE IS NO GUARDRAIL AT THE CULVERT.
THE EXISTING CULVERT IS TO BE REMOVED AND REPLACED WITH A 12' x 9' PRECAST DOUBLE
BOX CULVERT UTILIZING STAGE CONSTRUCTION.

NO SALVAGE



B1 Indicates Soil Boring Location and Number
ALL BORINGS DONE IN 1996 EXCEPT AS NOTED



STATION 288+69.43
BUILT 20 BY
STATE OF ILLINOIS
F.A.P. RTE. 591 SECTION (13)BR-1)BR
F.A. PROJ.
LOADING HL-93
STR. NO. 047-2051

NAME PLATE
SEE STD. 515001

WATERWAY INFORMATION

Drainage Area = 17.2 sq. mi. Prop. Low Grade Elev. = 631.13 @ Sta. 290+00

Flood	Freq. (Yr.)	Opening (Sq. Ft.)		Nat. Head (Ft.)	Head (Ft.)		Headwater El.		
		Prop.	Exist.		Prop.	Exist.	Prop.	Exist.	
Hydraulic Design	10	802	176	181	626.0	0.3	0.2	626.3	626.2
Base	50	1253	195	200	626.8	0.8	0.8	627.7	627.5
MAX. CALC.	100	1472	202	207	627.1	1.1	1.1	628.3	628.2
Overtopping	500	2010	218	223	627.8	2.2	2.1	630.0	629.9
		N/A	N/A	N/A	N/A	N/A	N/A	N/A	N/A

10-year velocity exist. 4.7 fps 10-year velocity prop 4.5 fps

TEMPORARY SHEET PILING DATA

TOP ELEV. = 631.50
TIP ELEV. = 593.65 AND VARIES
EMBEDMENT = 22.1 ft.
MIN. SECTION MODULUS = 53.8 in³/ft

IF THE CONTRACTOR CHOOSES TO ALTER THE TEMPORARY CANTILEVERED SHEET PILING DESIGN REQUIREMENTS SHOWN ON THE PLANS FOR LESSER DESIGN REQUIREMENTS, THEN FULL DESIGN SUBMITTALS WITH THE REQUIRED SEALS WILL BE EXPECTED BY THE DEPARTMENT FOR REVIEW AND APPROVAL.

GENERAL NOTES

ALL DIMENSIONS ARE IN INCHES (in.) EXCEPT AS NOTED.

THIS BOX CULVERT HAS A FILL HEIGHT OF 3'-7" . THE PRECAST CONCRETE BOX CULVERT SHALL CONFORM TO THE REQUIREMENTS OF ASTM C1577.

THE CONTRACTOR SHALL ANCHOR THE SHEET PILING TO THE BACK OF THE EXISTING WALLS. THE CONNECTION SHALL BE APPROVED BY THE ENGINEER.

THERE WAS A BRIDGE BUILT AT THIS LOCATION IN 1923, AND THIS STRUCTURE WAS WIDENED IN 1946. WHEN IT WAS WIDENED, THE ORIGINAL 1923 FOOTING WAS LEFT IN PLACE. IF THE EXISTING FOOTING (OR ANY OTHER SUBSTRUCTURE) IS ENCOUNTERED WHILE DRIVING SHEET PILING, THEN THE FOOTING (OR ANY OTHER SUBSTRUCTURE) SHALL BE REMOVED AND PAID FOR AS SPECIFIED IN ARTICLE 109.04 OF THE STANDARD SPECIFICATIONS.

HARD DRIVING MAY BE ENCOUNTERED DURING THE SHEET PILING INSTALLATION. THE CONTRACTOR SHALL PROVIDE THE APPROPRIATE DRIVING EQUIPMENT FOR THE SOIL CONDITIONS INDICATED ON THE BORING LOGS.

TO PREVENT SPILLAGE OF BACKFILL MATERIAL BETWEEN STAGES, THE CONTRACTOR SHALL PROVIDE A MEANS OF POSITIVE CONFINEMENT OF THE BACKFILL MATERIAL AGAINST THE CULVERT SIDE WALL AND THE EXISTING ABUTMENT FACE. THE METHOD OF CONFINEMENT SHALL BE APPROVED BY THE ENGINEER.

BILL OF MATERIALS

ITEM	UNIT	QUANT.
BOX CULVERT REMOVAL	FOOT	87.5
NAME PLATE	EACH	1
PRECAST CONCRETE BOX CULVERT 12'x 9' (SPECIAL)	FOOT	242
STONE RIPRAP CLASS A4	SQ. YD.	135
FILTER FABRIC FOR RIPRAP	SQ. YD.	135
BOX CULVERT END SECTIONS, CULVERT NO. 1	EACH	4
TRAVERSABLE PIPE GRATE	FOOT	700
TEMPORARY SOIL RETENTION SYSTEM	SQ. FT.	314
POROUS GRANULAR EMBANKMENT	CY. YD.	1272

PRECAST CONCRETE BOX CULVERT 12'x 9' (SPECIAL) SHALL BE BUILT ACCORDING TO ASTM C1577

LOADING HL-93

Allow 50 lbs./sq. ft. FOR FUTURE WEARING SURFACE.

DESIGN SPECIFICATIONS

2012 AASHTO LRFD Bridge Design Specifications, 6th Edition
ASTM C1577

DESIGN STRESSES

f_c = 5000 lbs./sq. in. } PRECAST
 f_y = 65,000 lbs./sq. in. } UNITS
 f_s = 3500 lbs./sq. in. } FIELD
 f_y = 60,000 lbs./sq. in. (REINF.) } UNITS

GENERAL PLAN
U.S. ROUTE 34 OVER
ROB ROY CREEK
F.A.P. ROUTE 591 - SECTION (13)BR
KENDALL COUNTY
STA. 288+69.43
STRUCTURE NO. 047-2051

*(13)R-2(13 BRIG, (13 BR-1)BR)

FILE NAME :	USER NAME :	DESIGNED :	REVISED :	STATE OF ILLINOIS DEPARTMENT OF TRANSPORTATION	GENERAL PLAN AND ELEVATION	F.A.P. RTE.	SECTION	COUNTY	TOTAL SHEETS	SHEET NO.
c:\pwwork\pridoc\braboyce\dms31885\PRO	607-shl-SN.047-2014.dgn				591	PROPOSED SN 047-2051			KENDALL	533
MODELNAME :	PLOT SCALE : 1/8"=1'-0"	CHECKED :	REVISED :		SCALE :	SHEET 1 OF 7 SHEETS STA. _____ TO STA. _____		CONTRACT NO. 66993		
	PLOT DATE : 5/30/2017	DATE :	REVISED :			ILLINOIS FED. AID PROJECT				

6-5-17 REV