

STATE OF ILLINOIS
DEPARTMENT OF TRANSPORTATION
DIVISION OF HIGHWAYS
PROPOSED
HIGHWAY PLANS

VARIOUS ROUTES
SECTION DIST 8 RESURFACING 2017-4
RESURFACING - A2 - CM
RANDOLPH COUNTY

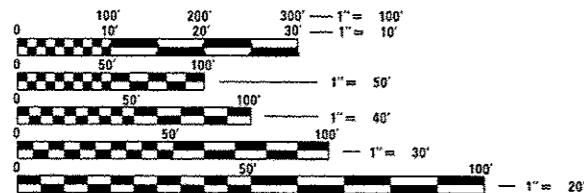
FAU RTE.	SECTION	COUNTY	TOTAL SHEETS	SHEET NO.
VAR	DIST 8 RESURFACING 2017-4	RANDOLPH	8	1
		ILLINOIS	CONTRACT NO. 76J96	

INDEX OF SHEETS

1. COVER SHEET
2. GENERAL NOTES, COMMITMENTS, AND HIGHWAY STANDARDS
3. SUMMARY OF QUANTITIES
4. SCHEDULE OF QUANTITIES
- 5-8 PLAN AND TYPICAL SECTION

FOR ADT INFORMATION, SEE SHEET NO. 2

DESIGN DESIGNATION
 N/A

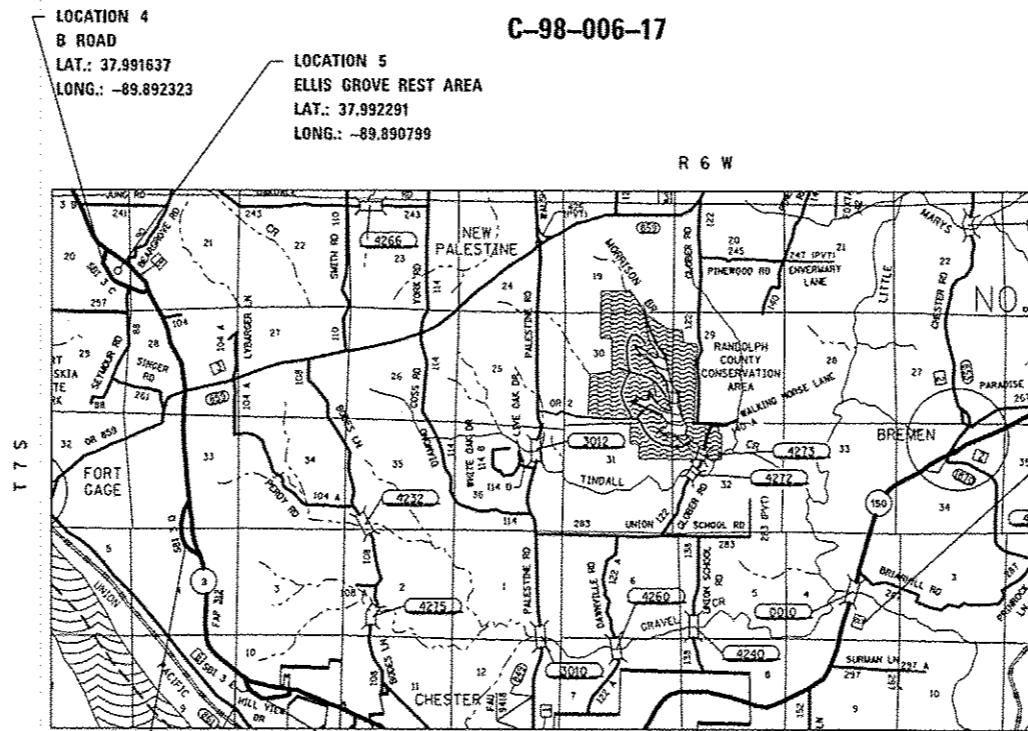


FULL SIZE PLANS HAVE BEEN PREPARED USING STANDARD ENGINEERING SCALES. REDUCED SIZED PLANS WILL NOT CONFORM TO STANDARD SCALES. IN MAKING MEASUREMENTS ON REDUCED PLANS, THE ABOVE SCALES MAY BE USED.

J.U.L.I.E.
 JOINT UTILITY LOCATION INFORMATION FOR EXCAVATION
 1-800-892-0123
 OR 811

PROJECT ENGINEER HERVE GELIN (618) 346-3179
 PROJECT MANAGER CECIL DOWNING (618) 346-3186

CONTRACT NO. 76J96



LOCATION 3
 OLD STATE ROUTE 3
 LAT.: 37.955804
 LONG.: -89.880157

LOCATION 2
 HILLVIEW ROAD
 LAT.: 37.934501
 LONG.: -89.867920

	LOC 1	LOC 2	LOC 3	LOC 4	LOC 5
GROSS LENGTH FT(MILES)	530'(0.1)	3,182'(0.6)	3,019'(0.57)	2,782'(0.53)	1,309'(0.25)
NET LENGTH(MILES)	530'(0.1)	3,182'(0.6)	3,019'(0.57)	2,782'(0.53)	1,309'(0.25)

NOT TO SCALE



LOCATION OF SECTION INDICATED THUS: - [black rectangle] -

LOCATION 1
 HISTORICAL COVERED BRIDGE
 LAT.: 37.948068
 LONG.: -89.766552

STATE OF ILLINOIS
 DEPARTMENT OF TRANSPORTATION

SUBMITTED *April 7, 2017*
Jeffrey Z. K... REGIONAL ENGINEER
May 12, 2017
Maureen M. Addis, P.E. ENGINEER OF DESIGN AND ENVIRONMENT
May 12, 2017
[Signature] DIRECTOR OF PROGRAM DEVELOPMENT

PRINTED BY THE AUTHORITY
OF THE STATE OF ILLINOIS

GENERAL NOTES

1. ILLINOIS STATE LAW REQUIRES A 48-HOUR NOTICE BE GIVEN TO ALL UTILITIES BEFORE DIGGING. FIELD MARKING OF FACILITIES MAY BE OBTAINED BY CONTACTING J.U.L.I.E. OR FOR NON-MEMBERS, THE UTILITY COMPANY DIRECTLY. AGENCIES KNOWN TO HAVE FACILITIES WITHIN THE PROJECT AREA ARE AS FOLLOWS:

- * CITY OF CHESTER (WATER)
- * CITY OF CHESTER (SANITARY SEWER)
- * AMEREN ILLINOIS (GAS & ELECTRIC)
- * CLEARWAVE COMMUNICATIONS (COMMUNICATIONS)
- * NEW WAVE COMMUNICATIONS, INC. (CTV)
- * EGYPTIAN WATER COMPANY (WATER)
- * FRONTIER COMMUNICATIONS (COMMUNICATIONS)
- * VILLAGE OF ELLIS GROVE (WATER & SEWER)

MEMBERS OF J.U.L.I.E. CALL TOLL FREE (800) 892-0123 OR 811 AND ARE INDICATED BY *. NON-J.U.L.I.E. MEMBERS MUST BE NOTIFIED INDIVIDUALLY.

2. THE CONTRACTOR SHALL EXERCISE CARE IN EXCAVATING AROUND EXISTING UTILITIES TO REMAIN IN PLACE, SUCH AS WATER AND SEWER MAINS, AND SHALL BE RESPONSIBLE FOR REPAIR OF THESE AND MAINTENANCE OF SERVICE, IF DAMAGED BY THE CONTRACTOR'S ACTIVITIES, AS DEEMED SUCH BY THE ENGINEER.

3. THE CONTRACTOR AND THE ENGINEER SHALL BE AWARE THAT NO SURVEY WAS PERFORMED FOR THIS PROJECT. THE STATIONING, TOPOGRAPHY, AND QUANTITIES SHOWN IN THE PLANS WERE CREATED USING MICROFILM AND FIELD MEASUREMENTS. ALL SHALL BE ASSUMED TO BE APPROXIMATE. THE CONTRACTOR SHALL VERIFY DIMENSIONS AND CONDITIONS IN THE FIELD PRIOR TO CONSTRUCTION AND ORDERING OF MATERIALS.

4. THE CONTRACTOR SHALL POST THE ROADWAY WITH "LOOSE GRAVEL" AND "SPEED LIMIT 35" SIGNS IN ACCORDANCE WITH APPLICABLE ARTICLES OF DIVISION 700 OF THE STANDARD SPECIFICATIONS. THESE SIGNS SHALL BE PLACED AT THE START OF WORK, NEAR INTERSECTING ROADWAYS AND THEN AT AN AVERAGE SPACING OF 0.5 MILES (0.8 KM). THE SIGNS MAY BE REMOVED AS SOON AS THE SWEEPING OPERATION HAS BEEN COMPLETED.

5. THE RATES OF APPLICATION SHOWN IN THE PLANS ARE NOMINAL RATES. DEVIATIONS, WILL BE ALLOWED AS SPECIFIED BY THE ENGINEER AND IN ACCORDANCE WITH STANDARD SPECIFICATIONS.

6. THE RESIDENT ENGINEER SHALL LOCATE ALL PAVEMENT MARKING /NO PASSING ZONE LIMITS PRIOR TO HMA SURFACE TREATMENT SO THE LIMITS CAN BE REPRODUCED UPON COMPLETION.

7. THE CONTRACTOR SHALL BE RESPONSIBLE FOR ESTABLISHING POSITIVE DRAINAGE IN THE DISTURBED AREAS, TO THE SATISFACTION OF THE ENGINEER.

8. 'ROAD CONSTRUCTION AHEAD' SIGNS SHALL BE PLACED AT THE BEGINNING OF THE PROJECT PLUS THE INTERSECTING SIDEROADS, AND WILL BE CONSIDERED INCLUDED IN THE TRAFFIC CONTROL PAY ITEMS. ALL CONSTRUCTION SIGNS SHALL BE 48" X 48" FLUORESCENT ORANGE.

9. PROPOSED PAVEMENT MARKINGS SHALL MATCH THE LOCATIONS OF THE EXISTING PAVEMENT MARKING, AS DIRECTED BY THE ENGINEER.

10. AT LOCATIONS WHERE PERMANENT PAVEMENT MARKINGS ARE PROPOSED, THE CONTRACTOR SHALL SWEEP THE ENTIRE ROADWAY A MINIMUM OF TWO WEEKS, BUT NOT TO EXCEED THREE WEEKS AFTER APPLICATION OF SEAL COAT AGGREGATE TO ALLOW PLACEMENT OF PAINT PAVEMENT MARKINGS. OF THIS TIME FRAME, THERE MUST BE SEVEN CONSECUTIVE DAYS OF DRY WEATHER BEFORE THE FINAL PAVEMENT MARKING CAN BE APPLIED. THE COST FOR THIS WORK SHALL BE INCLUDED IN THE PRICE OF THE SURFACE TREATMENT AND NO ADDITIONAL COMPENSATION WILL BE ALLOWED.

11. THE ENGINEER SHALL CONTACT TOM MOORE AT THE HAMEL YARD (618)-633-2206 PRIOR TO ORDERING MATERIALS TO DETERMINE EXACT LIMITS OF WORK INSIDE THE HAMEL YARD.

STANDARDS

- 000001-06
- 001006
- 701201-04
- 701502-07
- 701306-03
- 701311-03
- 701901-06
- 780001-05

LOCATION	DESCRIPTION	TRAFFIC DATA			
		ACTUAL (YEAR)	ESTIMATED (2016)	SU (%)	MU (%)
1	COVERED BRIDGE	25 (2016)	25	4.0	0.0
2	HILLVIEW ROAD	100 (2016)	100	10.0	5.0
3	OLD STATE RT 3	25 (2016)	25	4.0	0.0
4	"B" ROAD	25 (2016)	25	4.0	0.0
5	ELLIS GROVE R. A.	25 (2016)	25	4.0	0.0

COMMITMENTS

NONE

FILE NAME	USER NAME = NICHOLSONEW	DESIGNED -	REVISED -	STATE OF ILLINOIS DEPARTMENT OF TRANSPORTATION	GENERAL NOTES, COMMITMENTS, AND HIGHWAY STANDARDS	F.A.P. RTE.	SECTION	COUNTY	TOTAL SHEETS	SHEET NO.	
Default	PLOT SCALE = 1/8" = 100.00'	CHECKED -	REVISED -			VAR	DIST 8 RESURFACING 2017-4	RANDOLPH	8	2	
	PLOT DATE = 2/1/2017	DATE -	REVISED -			SCALE: _____ SHEET _____ OF _____ SHEETS STA. _____ TO STA. _____		CONTRACT NO. 76J96			
						ILLINOIS FED. AID PROJECT					

