

STATE OF ILLINOIS  
DEPARTMENT OF TRANSPORTATION

F.A.P. RTE.	SECTION	COUNTY	TOTAL SHEETS	SHEET NO.
672	*	LASALLE	4	1
		ILLINOIS	CONTRACT NO. 66H43	

\* 2017-2 TREE REMOVAL EAB CONTROL

- INDEX OF SHEETS
- 1 COVER SHEET
  - 2 GENERAL NOTES
  - 3 SUMMARY OF QUANTITIES
  - 4 SCHEDULES

# PROPOSED HIGHWAY PLANS

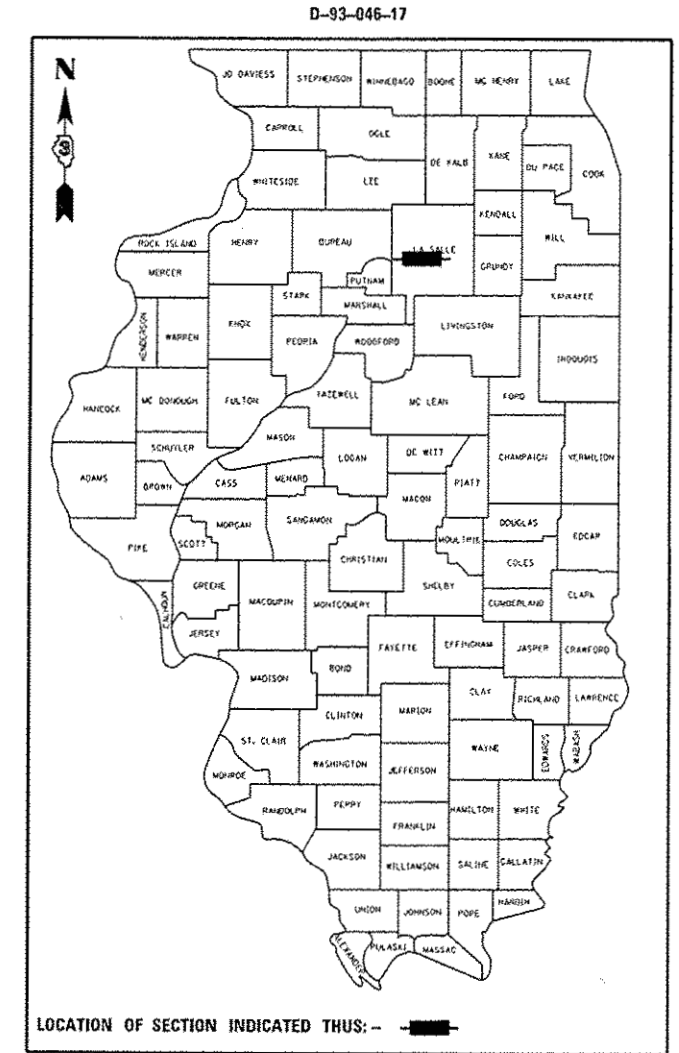
FAP 627 (IL 71)  
2017-2 TREE REMOVAL EAB CONTROL

TREE REMOVAL  
LASALLE COUNTY

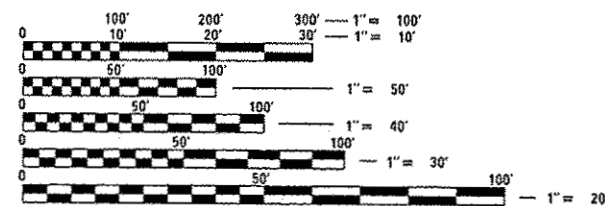
C-93-082-17

**HIGHWAY STANDARDS**

- 000001-06 STANDARD SYMBOLS, ABBREVIATIONS AND PATTERNS
- 001006 DECIMAL OF AN INCH AND OF A FOOT
- 701301-04 LANE CLOSURE, 2L, 2W, SHORT TIME OPERATIONS
- 701306-03 LANE CLOSURE, 2L, 2W, SLOW MOVING OPERATIONS DAY ONLY, FOR SPEEDS ≥ 45 MPH
- 701901-06 TRAFFIC CONTROL DEVICES

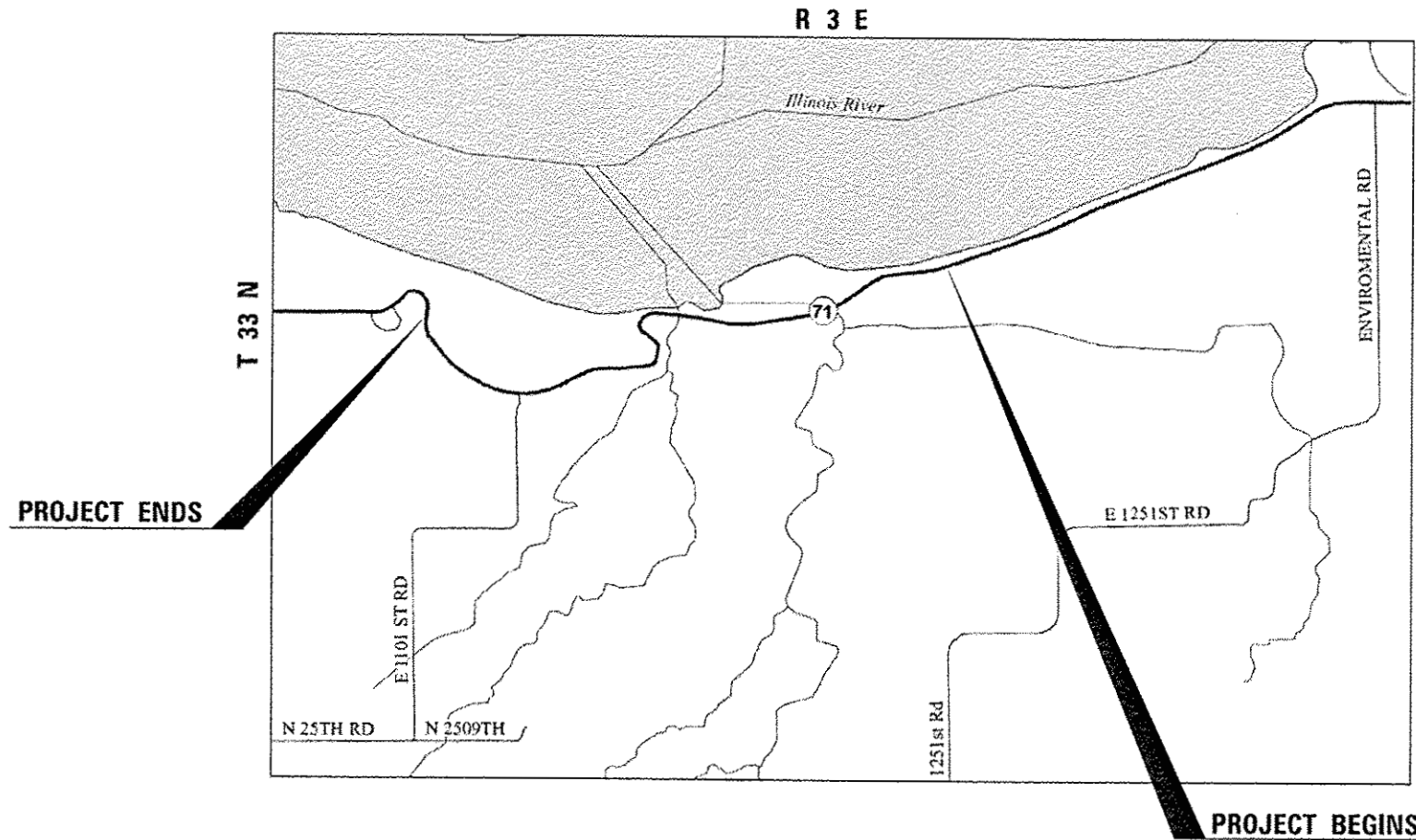


**FUNCTIONAL CLASSIFICATION**  
MINOR ARTERIAL  
2015 ADT = 1400  
PV=95.7% SU=2.86% MU=1.4%



FULL SIZE PLANS HAVE BEEN PREPARED USING STANDARD ENGINEERING SCALES. REDUCED SIZED PLANS WILL NOT CONFORM TO STANDARD SCALES. IN MAKING MEASUREMENTS ON REDUCED PLANS, THE ABOVE SCALES MAY BE USED.

J.U.L.I.E.  
JOINT UTILITY LOCATION INFORMATION FOR EXCAVATION  
1-800-892-0123  
OR 811



GROSS LENGTH = 7920 FT. = 1.5 MILE  
NET LENGTH = 7920 FT. = 1.5 MILE

PROJECT ENGINEER: DAVE ALEXANDER, P.E.  
UNIT CHIEF: DARCY CARPENTER  
DISTRICT 3 NO. (815) 434-6131  
CONTRACT NO. 66H43

STATE OF ILLINOIS  
DEPARTMENT OF TRANSPORTATION

SUBMITTED 04/05 20 17  
Karin Marchand REGIONAL ENGINEER

May 12 20 17  
Maurice M. Addis ENGINEER OF DESIGN AND ENVIRONMENT

May 12 20 17  
[Signature] 2  
DIRECTOR OF PROGRAM DEVELOPMENT

PRINTED BY THE AUTHORITY  
OF THE STATE OF ILLINOIS

REV

**GENERAL NOTES**

FOR STABILIZATION, ALL TYPE III BARRICADES WILL REQUIRE A MINIMUM OF FOUR SAND BAGS PER BARRICADE.

ONLY THOSE TREES DESIGNATED BY THE ENGINEER OR LISTED IN THE TREE REMOVAL SCHEDULE SHALL BE REMOVED. THE CONTRACTOR SHALL PROTECT ALL REMAINING TREES AND SHRUBS FROM DAMAGE DUE TO HIS OPERATIONS.

ALL EXCAVATED MATERIAL, WHICH INCLUDES DIGGING OR GRADING OF ANY SOIL OR FILL MATERIAL, WITH THE EXCEPTION OF AGGREGATE FILLS, MUST BE INCORPORATED WITHIN THE IDOT RIGHT OF WAY DUE TO ENVIRONMENTAL DOCUMENTATION REQUIREMENTS.

ANY REFERENCE TO A STANDARD IN THESE PLANS SHALL BE INTERPRETED TO MEAN THE EDITION AS INDICATED BY THE SUBNUMBER SHOWN IN THE LIST OF STANDARDS OR THE COPY INCLUDED IN THESE PLANS.

ALL DAMAGE TO DEPARTMENT OWNED UNDERGROUND FACILITIES, CAUSED BY THE CONTRACTOR SHALL BE REPAIRED TO THE SATISFACTION OF THE DEPARTMENT AT THE CONTRACTOR'S EXPENSE. THIS SHALL INCLUDE ALL TEMPORARY REPAIRS REQUIRED TO KEEP THE FACILITY OPERATIONAL WHILE MATERIAL IS BEING OBTAINED TO MAKE PERMANENT REPAIRS.

ALL DAMAGE TO DEPARTMENT OWNED GUARDRAIL, CAUSED BY THE CONTRACTOR SHALL BE REPAIRED TO THE SATISFACTION OF THE DEPARTMENT AT THE CONTRACTOR'S EXPENSE. THIS SHALL INCLUDE ALL TEMPORARY REPAIRS REQUIRED TO KEEP THE GUARDRAIL OPERATIONAL WHILE MATERIAL IS BEING OBTAINED TO MAKE PERMANENT REPAIRS.

THE CONTRACTOR SHALL CONTACT JULIE AT LEAST 48 HOURS PRIOR TO EXCAVATION TO DETERMINE WHICH UTILITIES ARE IN THE AREA.

**COMMITMENTS**

1. THE RESIDENT ENGINEER WILL COORDINATE THE REMOVAL WORK WITH THE DISTRICT LANDSCAPE ARCHITECT, KATHY CINDRICH, AT 815 434-8445, AND WITH THE IDNR NATURAL RESOURCE SPECIALIST - FORESTER, RANDY TIMMONS, AT 815-481-0022 OR KERRY NOVAK STARVED ROCK PARK SUPERINTENDENT AT 815-667-5351 PRIOR TO THE BEGINNING OF WORK.
2. DUE TO THE POTENTIAL PRESENCE OF THREATENED AND ENDANGERED SPECIES (T&E), ALL TREE REMOVAL IS LIMITED TO OCCUR BETWEEN NOVEMBER 16, 2017 AND MARCH 31, 2018.

STATE OF ILLINOIS  
DEPARTMENT OF TRANSPORTATION  
DISTRICT THREE  
AS BUILT INFORMATION

\_\_\_\_\_  
SUPERVISING CONSTRUCTION FIELD ENGINEER

\_\_\_\_\_  
RESIDENT ENGINEER / TECHNICIAN

START & END DATES  
OF CONSTRUCTION:

INSPECTORS:

STATE OF ILLINOIS  
DEPARTMENT OF TRANSPORTATION  
DISTRICT THREE

PREPARED BY: David Brown  
DISTRICT STUDIES & PLANS ENGINEER

DATE: 04/05/17

EXAMINED BY: Joseph C. Wick AH  
DISTRICT CONSTRUCTION ENGINEER

Michael A. Short  
DISTRICT MATERIALS ENGINEER

Jim Hays  
DISTRICT OPERATIONS ENGINEER

\* 2017-2 TREE REMOVAL EAB CONTROL

STATE OF ILLINOIS  
DEPARTMENT OF TRANSPORTATION

FILE NAME :	USER NAME : carpenterdj	DESIGNED -	REVISED -
Path: \\10.094810\INTEG\Illinois\gov\PI\DOT\Documents\IDOT Offices\District 3\Projects\0366\DRAWING\0366H43-dt-cover.dgn		CHECKED -	REVISED -
Default	PLOT SCALE : 100.0000 1" = 10'	DATE -	REVISED -
	PLOT DATE : 4/4/2017		

SCALE:	SHEET	OF	SHEETS	STA.	TO	STA.	F.A.P. RTE. 627	SECTION	COUNTY	TOTAL SHEETS	SHEET NO.
									LASALLE	4	2
ILLINOIS FED. AID PROJECT CONTRACT NO. 66H43											

100% STATE

CONSTR. CODE

100% STATE

CODE NO.	ITEM	UNIT	TOTAL QUANTITY	ROADWAY
				0031 ✓
				RURAL ✓
20100110	TREE REMOVAL (6 TO 15 UNITS DIAMETER)	UNIT	1068	1068
20100210	TREE REMOVAL (OVER 15 UNITS DIAMETER)	UNIT	186	186
67100100	MOBILIZATION	LSUM	1	1
70100460	TRAFFIC CONTROL AND PROTECTION, STANDARD 701306	LSUM	1	1

4

• 2017-2 TREE REMOVAL EAB CONTROL

FILE NAME =	USER NAME = oarpenterdj	DESIGNED -	REVISED -	<b>STATE OF ILLINOIS DEPARTMENT OF TRANSPORTATION</b>	<b>SUMMARY OF QUANTITIES</b>				F.A.P. RTE.	SECTION	COUNTY	TOTAL SHEETS	SHEET NO.
pu\\VL084EB\ID\INTEG\illinois.gov\PIWIDOT\Documents\IDOT Offices\District 3V\Projects\0368-DRAWING\0368H43-sht-details.dgn		REVISED -	REVISED -		627	-	LASALLE	4	3				
PLOT SCALE = 1/8" = 1' / in.	CHECKED -	REVISED -	REVISED -		CONTRACT NO. 66H43				ILLINOIS FED. AID PROJECT				
Default	PLOT DATE = 4/4/2017	DATE -	REVISED -		SCALE: _____	SHEET _____ OF _____ SHEETS	STA. _____ TO STA. _____						

REV

IL 71				
LOCATION	LT OR RT	NUMBER OF TREES AND SIZE	TREE REMOVAL DIAMETER	TREE REMOVAL DIAMETER
			6-15 UNIT	OVER 15 UNIT
1	LT	1		16
2	LT	1	10	
3	LT	1	12	
4	LT	1		18
5	LT	1	10	
6	LT	1	8	
7	LT	1	6	
8	LT	1	10	
9	LT	1	8	
10	LT	1	10	
11	LT	1	8	
12	RT	1	10	
13	RT	1	8	
14	LT	2 (12-10)	22	
15	LT	1	10	
16	LT	1		16
17	RT	2 (10-8)	18	
18	LT	2 (12-12)	24	
19	RT	1	12	
20	LT	3 (10-10-8)	28	
21	LT	1	12	
22	LT	1	14	
23	LT	1	12	
24	LT	1	14	
25	LT	1	12	
26	LT	1	8	
27	LT	1	10	
28	LT (IN LOT AREA)	1	10	
29	LT	1	6	
30	LT	1	8	
31	LT	1	8	
32	LT	1	12	
33	LT	1	8	
34	LT	1	12	
35	LT	1	8	
36	LT	1	8	
37	LT	1		16
38	LT	1		16
39	LT	1	12	
40	RT	2 (10-12)	22	
41	RT	1	8	
42	RT	1	8	
43	RT	1	10	
44	RT	1	8	
45	RT	1	8	
46	RT	1	10	
47	RT	1	8	
48	RT	1	8	
49	RT	1	10	
50	RT	1	10	
50A	LT	1		18
51	LT	1	14	
52	LT	1	12	
53	LT	1	10	
54	LT	1	12	
55	LT	1	12	
56	LT	1	14	
57	LT	1	10	
58	LT	1	12	
59	LT	1	8	
60	RT	1	10	

IL 71				
LOCATION	LT OR RT	NUMBER OF TREES AND SIZE	TREE REMOVAL DIAMETER	TREE REMOVAL DIAMETER
			6-15 UNIT	OVER 15 UNIT
61 & 62	RT	2 (12-16)	12	16
63	RT	1	14	
64	RT	1	14	
65	RT	1	8	
66	RT	1	12	
67	RT	1	10	
68	RT	1	12	
69	LT	1	6	
70	LT	1	6	
71	RT	1	10	
72	LT	1	10	
73	LT	1	10	
74	LT	1		16
75	LT	1	14	
76	LT	1	14	
77	LT	1	8	
78	LT	1	14	
79	RT	1	8	
80	RT	1	14	
81	LT	1	12	
82	LT	1	8	
83	LT	1	8	
84	LT	1	6	
85	LT	1	8	
86	RT	1	8	
87	RT	1	10	
88	LT	1	10	
89	RT	1	6	
90	RT	1	8	
91 & 92	LT	2(8-10)	18	
93	LT	1	8	
94	LT	1	10	
95	RT	1	8	
96	RT	1	10	
97	RT	1	8	
98	RT	1	8	
99	LT	1	14	
100	RT	1		18
101	LT	1		16
102	LT	1	12	
103	RT	1	8	
104	RT	1	12	
105	RT	1	12	
106	LT	1	14	
107	LT	1	14	
108	LT	1		20
109	LT	1	14	
110	RT	1	6	
			1068	186

• 2017-2 TREE REMOVAL EAB CONTROL

FILE NAME =	USER NAME = carpenterdj	DESIGNED - _____	REVISED - _____
pw:\IL084EBIDINTEG.illinois.gov\PWIDOT\Documents\DOT Offices\District 3\Projects\036643\B36643-shr-details.dgn		CHECKED - _____	REVISED - _____
Default	PLOT SCALE = 100.0000' / in.	DATE - _____	REVISED - _____
	PLOT DATE = 4/4/2017		

**STATE OF ILLINOIS  
DEPARTMENT OF TRANSPORTATION**

**SCHEDULE**

SCALE: \_\_\_\_\_ SHEET \_\_\_\_ OF \_\_\_\_ SHEETS STA. \_\_\_\_\_ TO STA. \_\_\_\_\_

F.A.P. RTE.	SECTION	COUNTY	TOTAL SHEETS	SHEET NO.
627	•	LASALLE	4	4
CONTRACT NO. 66H43				
ILLINOIS FED. AID PROJECT				