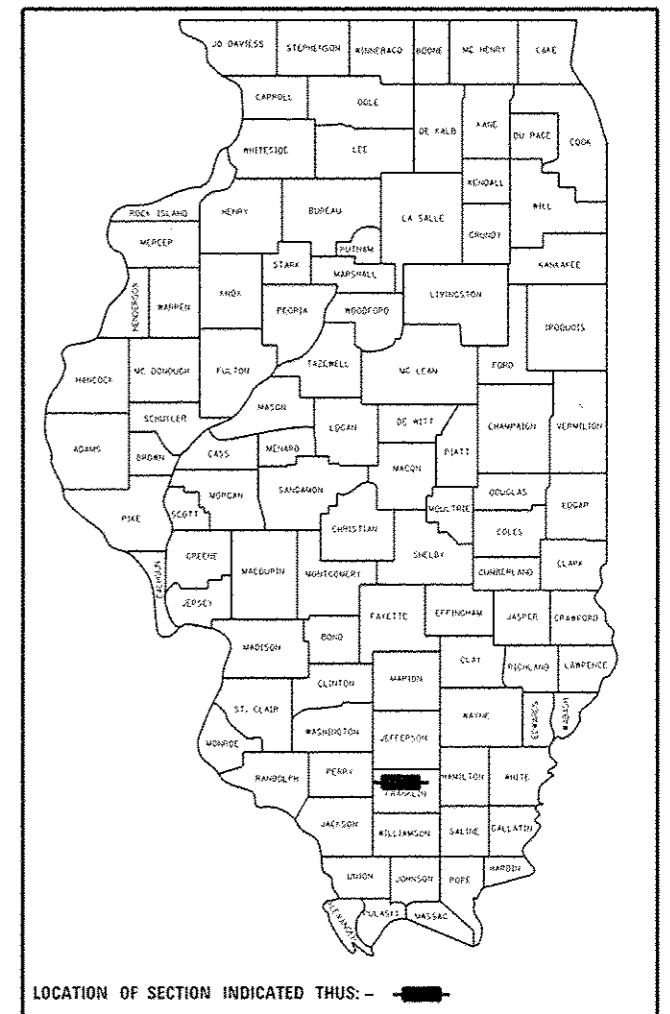


STATE OF ILLINOIS
DEPARTMENT OF TRANSPORTATION

F.A.P. RTE.	SECTION	COUNTY	TOTAL SHEETS	SHEET NO.
853	*	FRANKLIN	7	1
		ILLINOIS	CONTRACT NO. 78603	

*LOAD POSTING MITIGATION 2018-1

D-99-057-17



**PROPOSED
HIGHWAY PLANS**

FAP 853 (IL 14)
SECTION: LOAD POSTING MITIGATION 2018-1
STRUCTURAL SLAB OVER SN 028-7049

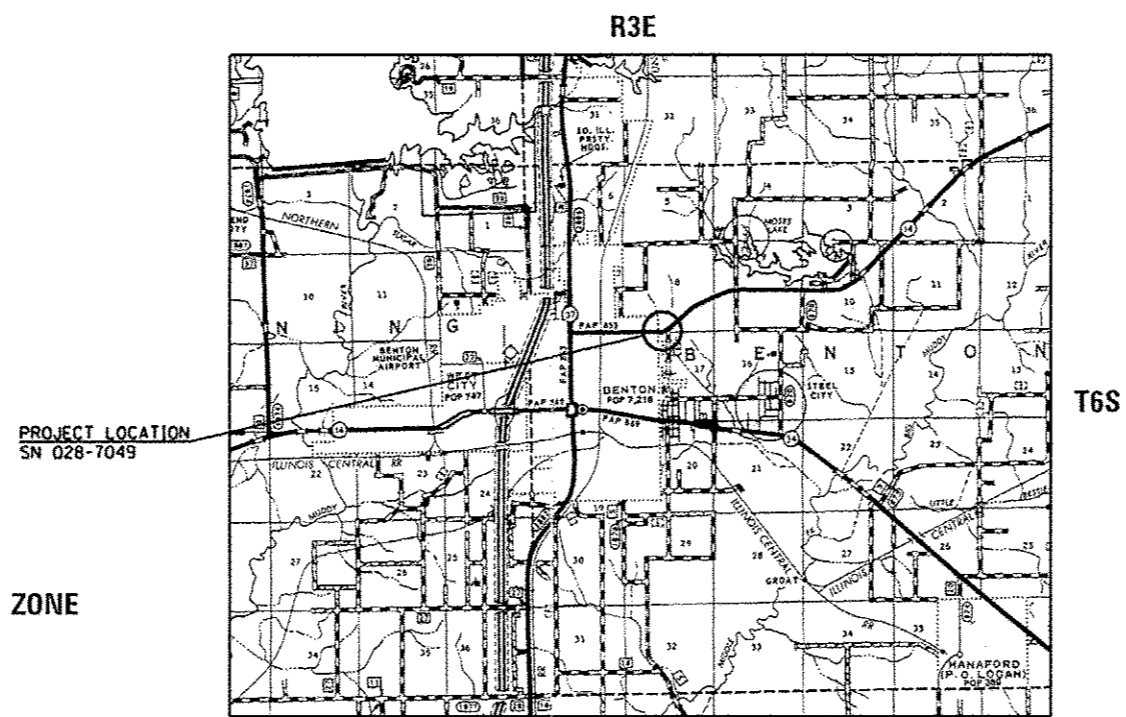
FRANKLIN COUNTY

C-99-057-17

FOR INDEX OF SHEETS, SEE SHEET NO. 2
FOR SUMMARY OF QUANTITIES, SEE SHEET NO. 3
FOR STRUCTURAL PAVEMENT DESIGN INFORMATION, SEE SHEET NO. NA

TRAFFIC DATA
2015 ADT = 3550
5% TRUCKS

TOWNSHIP:
BENTON



DESIGN DESIGNATION : NA
COORDINATE SYSTEM : ILLINOIS COORDINATE SYSTEM, EAST ZONE
POSTED SPEED : 55 MPH

J.U.L.I.E.
JOINT UTILITY LOCATION INFORMATION FOR EXCAVATION
1-800-892-0123
OR 811

PROJECT ENGINEER: DAVID PICHE
PROJECT DESIGNER: T. WAYNE HALSTEAD

GROSS LENGTH = 18.75 FT. = 0.004 MILES
NET LENGTH = 18.75 FT. = 0.004 MILES

CONTRACT NO. 78603

STATE OF ILLINOIS
DEPARTMENT OF TRANSPORTATION

SUBMITTED May 4 2017

Jeffrey Z Keim
REGION FIVE ENGINEER

May 12 2017
Maureen M. Addis, P.E.
ENGINEER OF DESIGN AND ENVIRONMENT

May 12 2017
James J. [Signature]
DIRECTOR OF PROGRAM DEVELOPMENT

**PRINTED BY THE AUTHORITY
OF THE STATE OF ILLINOIS**

SUMMARY OF QUANTITIES

FRANKLIN
FAP 853
100% STATE ✓
URBAN ✓
ROADWAY
0014 ✓

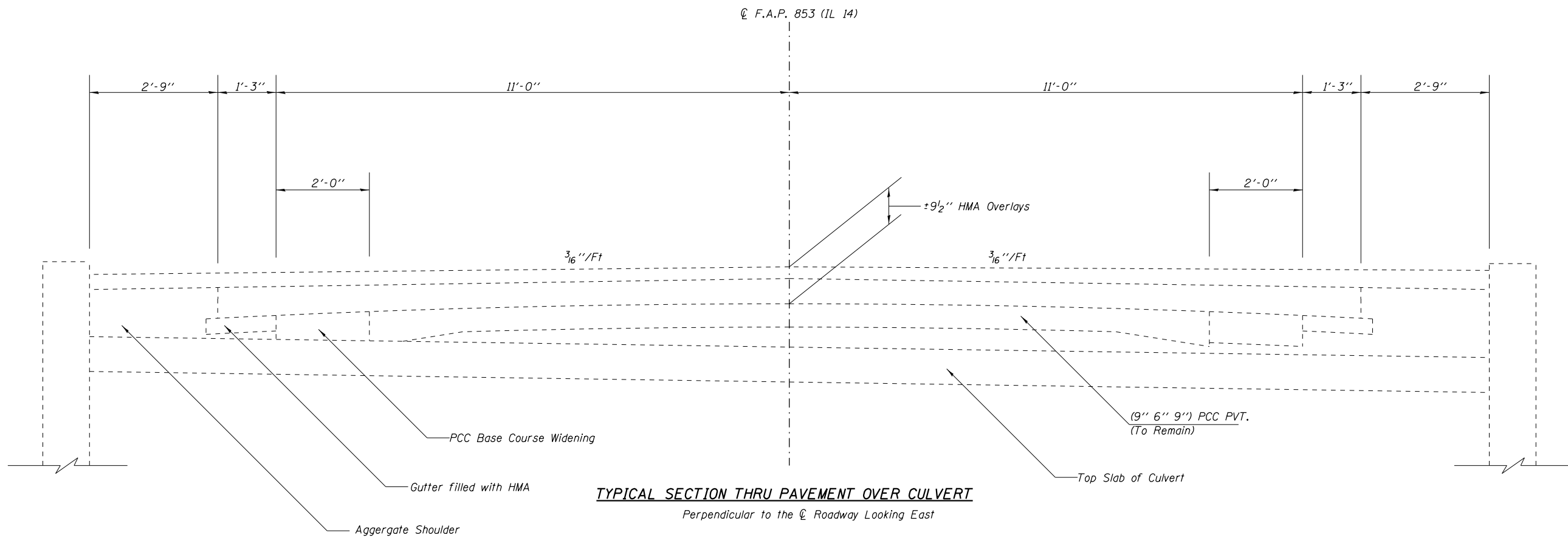
CODE NUMBER	ITEM DESCRIPTION	UNIT	
X7015005	CHANGEABLE MESSAGE SIGN	CAL DA	14
50300255	CONCRETE SUPERSTRUCTURE	CU YD	16.5
50800205	REINFORCEMENT BARS, EPOXY COATED	POUND	4160
50800515	BAR SPLICERS	EACH	32
67100100	MOBILIZATION	LSUM	1
70100100	TRAFFIC CONTROL AND PROTECTION, STANDARD 701316	EACH	1
70100450	TRAFFIC CONTROL AND PROTECTION, STANDARD 701201	LSUM	1
70106500	TEMPORARY BRIDGE TRAFFIC SIGNALS	EACH	1
70106700	TEMPORARY RUMBLE STRIPS	EACH	3
* 78001110	PAINT PAVEMENT MARKING - LINE 4"	FOOT	62
* 86200300	UNINTERRUPTABLE POWER SUPPLY, EXTENDED	EACH	1
X3200005	HOT-MIX ASPHALT SURFACE REMOVAL, 9 1/2"	SQ YD	63

12

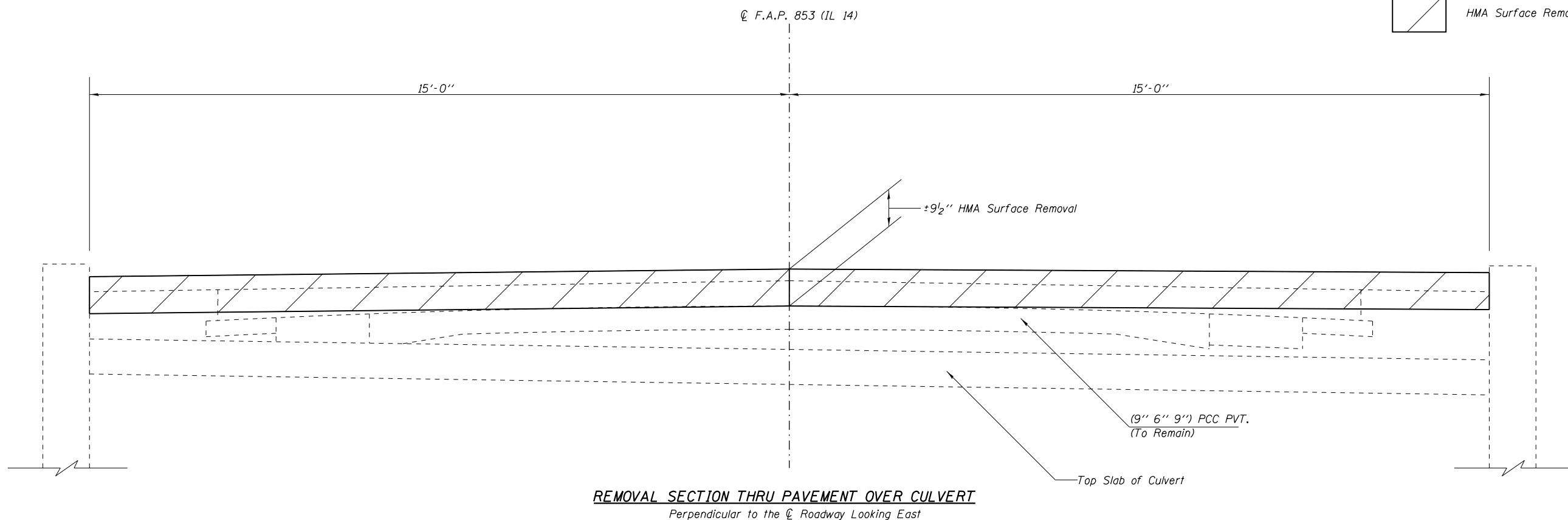
* SPECIALTY ITEM

*LOAD POSTING MITIGATION 2018-1

FILE NAME *	USER NAME # holstendw	DESIGNED -	REVISED -	STATE OF ILLINOIS DEPARTMENT OF TRANSPORTATION	SUMMARY OF QUANTITIES	F.A.P. RTE. 853	SECTION *	COUNTY FRANKLIN	TOTAL SHEETS 7	SHEET NO. 3
p:\11\884E01INTEG\illinois.gov\1007\Documents\1007_Offices\District 9\Projects\78603\DRAN\to\CAD\Drawings\78603-Sheets.dgn	p:\11\884E01INTEG\illinois.gov\1007\Documents\1007_Offices\District 9\Projects\78603\DRAN\to\CAD\Drawings\78603-Sheets.dgn	CHECKED -	REVISED -	SCALE: SHEET OF SHEETS STA. TO STA.		CONTRACT NO. 78603 ILLINOIS FED. AID PROJECT				



TYPICAL SECTION THRU PAVEMENT OVER CULVERT
 Perpendicular to the CL Roadway Looking East



REMOVAL SECTION THRU PAVEMENT OVER CULVERT
 Perpendicular to the CL Roadway Looking East

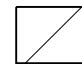
FILE NAME =	USER NAME = halsteadw	DESIGNED -	REVISED -
pw:\IL084EB\INTEG\Illinois.gov\PWIDOT\Documents\DOT Offices\District 9\Projects\78603\CADData\CADsheets\78603-SECTION		DRAWN -	REVISED -
Default	PLOT SCALE = 5.0000' / 1 in.	CHECKED -	REVISED -
	PLOT DATE = 5/4/2017	DATE -	REVISED -

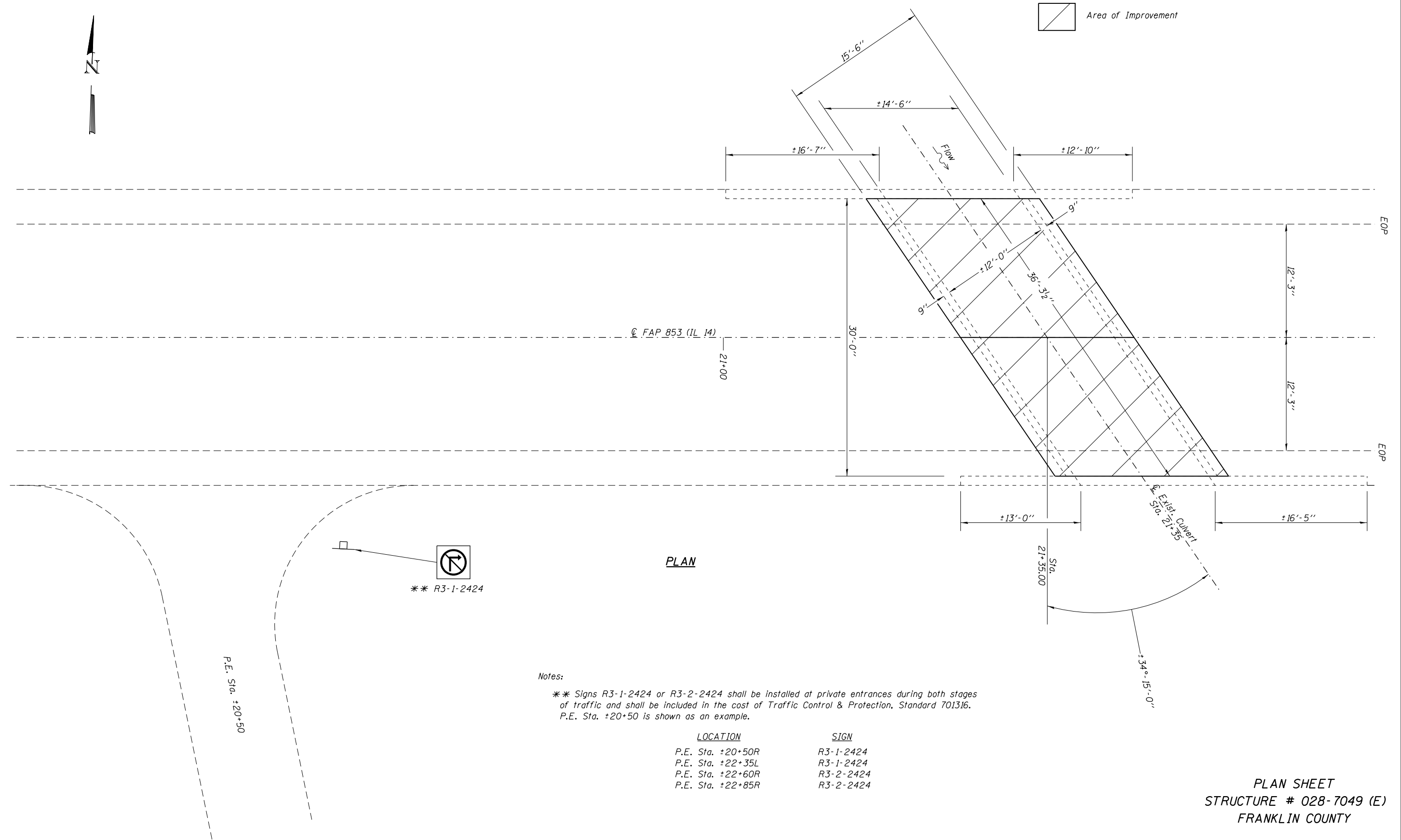
STATE OF ILLINOIS
DEPARTMENT OF TRANSPORTATION

TYPICAL AND REMOVAL SECTIONS			
SCALE:	SHEET	OF SHEETS	STA. TO STA.

* LOAD POSTING MITIGATION 2018-1				
F.A.P. RTE.	SECTION	COUNTY	TOTAL SHEETS	SHEET NO.
853	*	FRANKLIN	7	4
CONTRACT NO. 78603				
ILLINOIS FED. AID PROJECT				



 Area of Improvement



PLAN

Notes:

** Signs R3-1-2424 or R3-2-2424 shall be installed at private entrances during both stages of traffic and shall be included in the cost of Traffic Control & Protection, Standard 701316. P.E. Sta. ±20+50 is shown as an example.

LOCATION

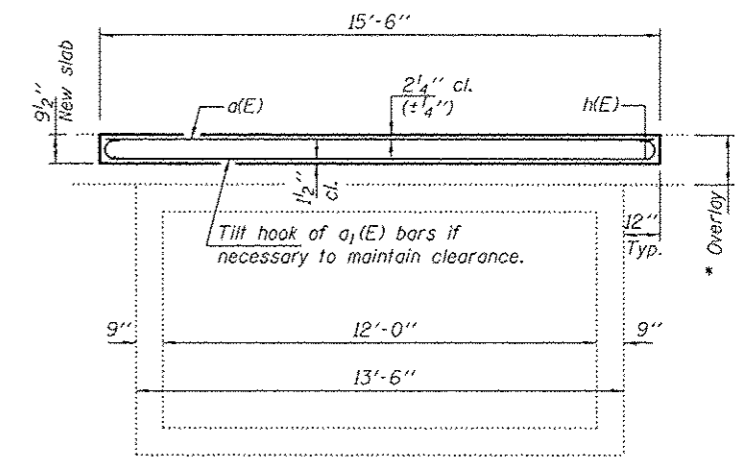
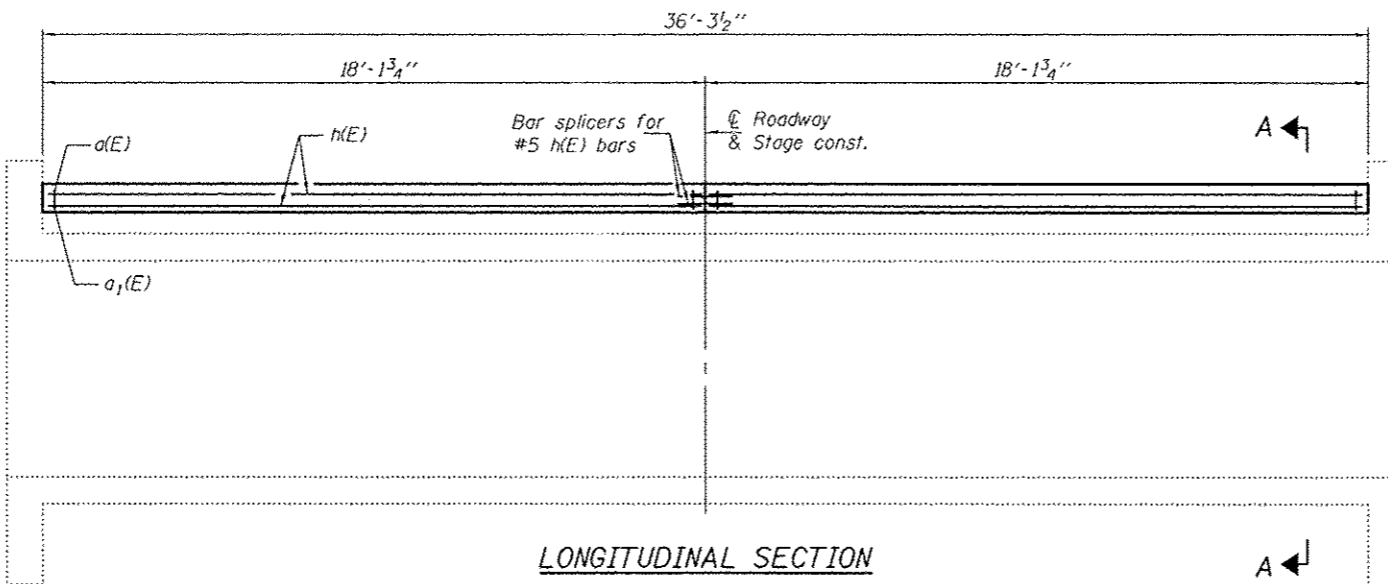
- P.E. Sta. ±20+50R
- P.E. Sta. ±22+35L
- P.E. Sta. ±22+60R
- P.E. Sta. ±22+85R

SIGN

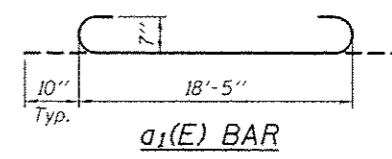
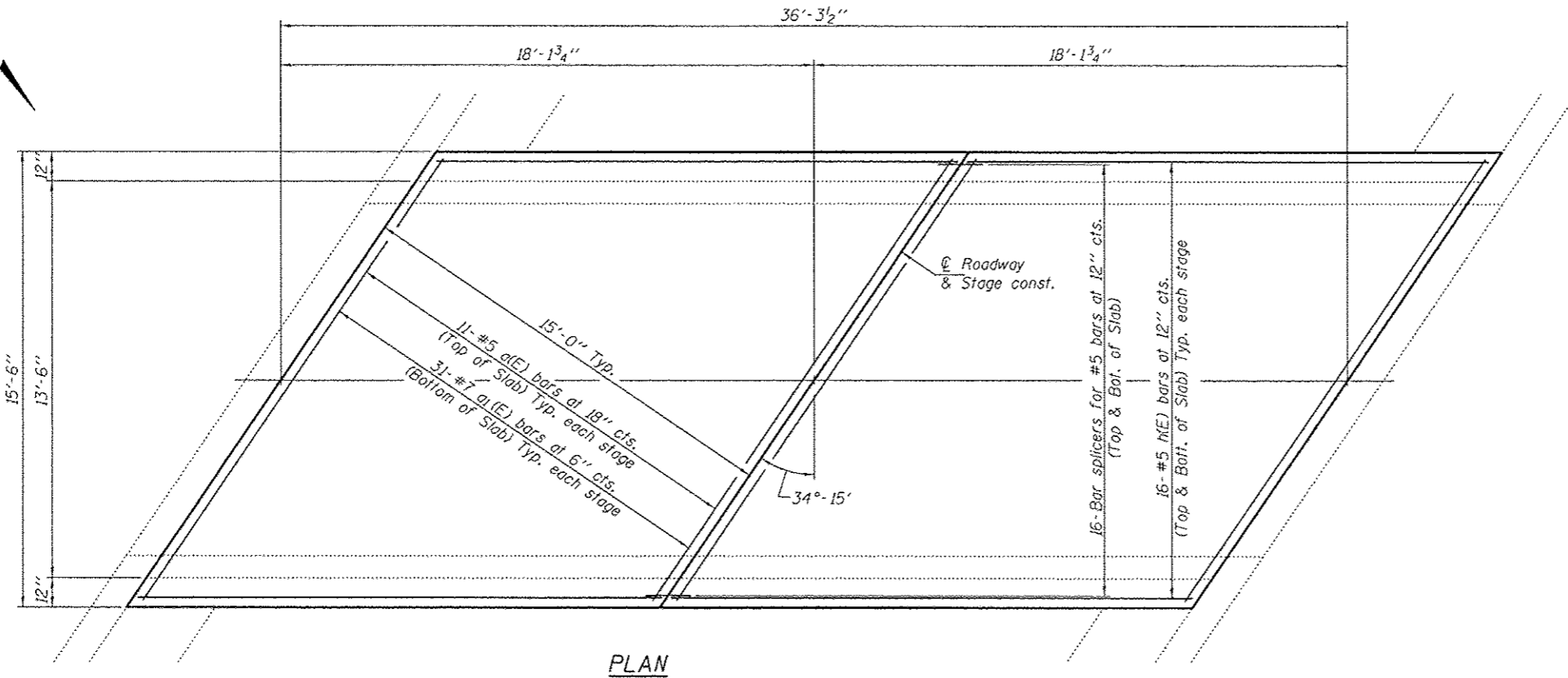
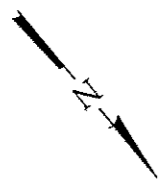
- R3-1-2424
- R3-1-2424
- R3-2-2424
- R3-2-2424

PLAN SHEET
STRUCTURE # 028-7049 (E)
FRANKLIN COUNTY

FILE NAME =	USER NAME = halsteadw	DESIGNED -	REVISED -	STATE OF ILLINOIS DEPARTMENT OF TRANSPORTATION	PLAN SHEET			* LOAD POSTING MITIGATION 2018-1		
pw:\IL084EB\INTEG\Illinois.gov\PWIDOT\Documents\DOT Offices\District 9\Projects\78603\CADDData\CADsheets\78603-5-DRAWN		DRAWN -	REVISED -		SCALE:	SHEET	OF	SHEETS	STA.	TO STA.
Default		CHECKED -	REVISED -							
	PLOT DATE = 5/4/2017	DATE -	REVISED -							
				F.A.P. RTE. 853			SECTION *	COUNTY FRANKLIN	TOTAL SHEETS 7	SHEET NO. 5
							CONTRACT NO. 78603			
							ILLINOIS FED. AID PROJECT			



* Varies from ±16" to ±22 1/2". Remove 9 1/2" of existing HMA overlay and replace with 9 1/2" concrete slab as shown. Slope to match roadway. Cost of removal included with Hot-Mix Asphalt Surface Removal, 9 1/2"



BILL OF MATERIAL

Bar	No.	Size	Length	Shape	
a(E)	22	#5	18'-5"	—	
a1(E)	62	#7	20'-1"	U	
h(E)	64	#5	17'-10"	—	
Bar Splicers				Each	32
Hot-Mix Asphalt Surface Removal, 9 1/2"				Sq. Yds.	62.5
Reinforcement Bars, Epoxy Coated				Pound	4160
Concrete Superstructure				Cu. Yds.	16.5

GENERAL NOTES

Plan dimensions and details relative to existing plans are subject to nominal construction variations. The Contractor shall field verify existing dimensions and details affecting new construction and make necessary approved adjustments prior to construction or ordering of materials. Such variations shall not be cause for additional compensation for a change in scope of the work, however, the Contractor will be paid for the quantity actually furnished at the unit price bid for the work.

Reinforcement bars designated (E) shall be epoxy coated.

The slab surface shall have its final finish fined according to Article 420.09(e)(1) of the Standard Specifications. Cost included with Concrete Superstructures.

DESIGN STRESSES

FIELD UNITS
 $f'c = 3,500$ psi
 $f_y = 60,000$ psi (Reinf.)



DESIGNED: *David B. Day*
 CHECKED: *Dickie H. Veliz*
 DRAWN: *baliva*
 CHECKED: *HH*

DATE: MAY 9, 2017

REVISIONS:
 REVISIONS:
 REVISIONS:

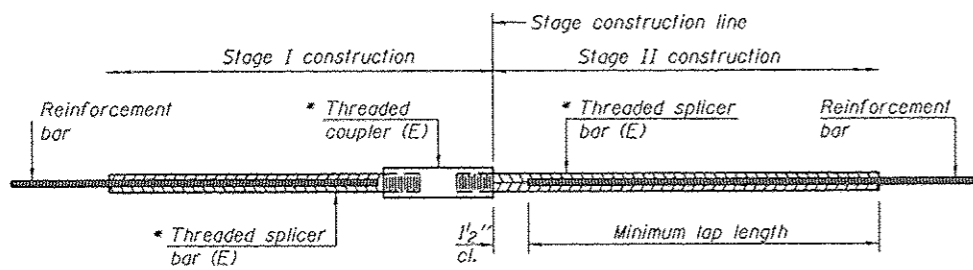
PASSED: *David Carl Puzey*
 ENGINEER OF BRIDGES AND STRUCTURES

STATE OF ILLINOIS
 DEPARTMENT OF TRANSPORTATION

SLAB DETAILS
 FAP 853 (IL 14)
 SN 028-7049
 SHEET NO. 1 OF 2 SHEETS

F.A.P. RTE.	SECTION	COUNTY	TOTAL SHEETS	SHEET NO.
853	LOAD POSTING MITIGATION 2018-1	FAYETTE	7	6

CONTRACT NO. 78603
 ILLINOIS FED. AID PROJECT

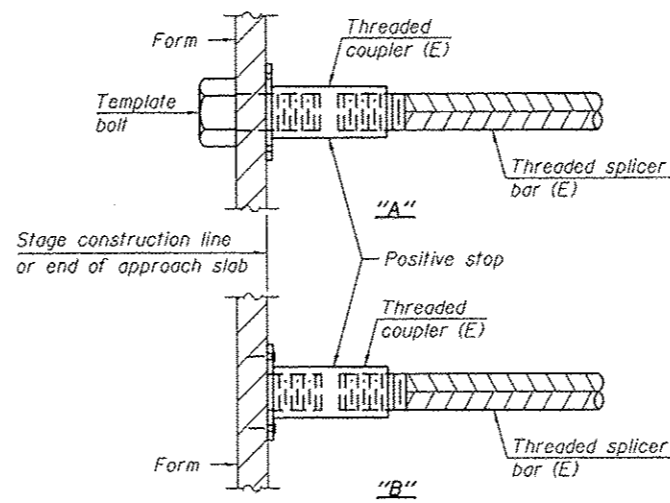


STANDARD BAR SPLICER ASSEMBLY

Threaded splicer bar length = min. lap length + 1/2" + thread length

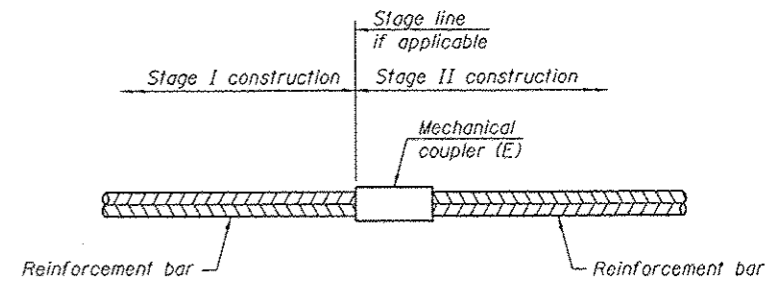
* Epoxy not required on Bar Splicer Assembly components used in conjunction with black bars.

Location	Bar size	No. assemblies required	Minimum lap length
Top of slab	#5	16	3'-2"
Bottom of slab	#5	16	3'-2"



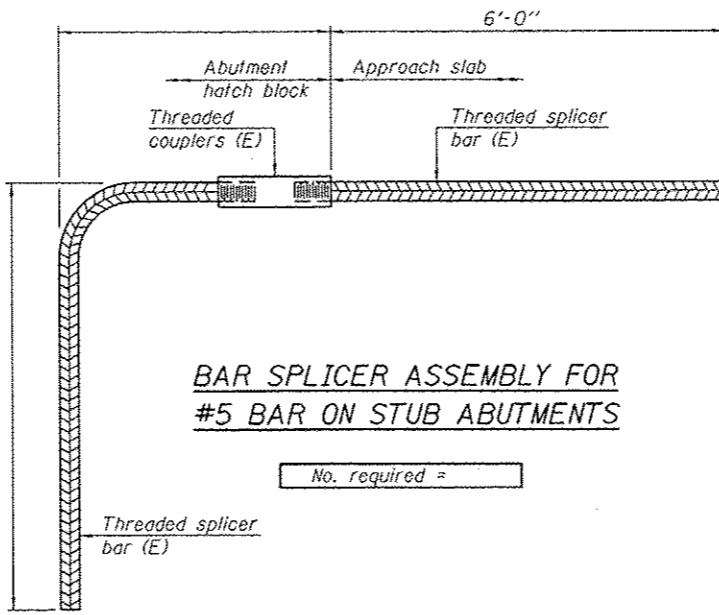
INSTALLATION AND SETTING METHODS

"A" : Set bar splicer assembly by means of a template bolt.
 "B" : Set bar splicer assembly by nailing to wood forms or cementing to steel forms.
 (E) : Indicates epoxy coating.



STANDARD MECHANICAL SPLICER

Location	Bar size	No. assemblies required



BAR SPLICER ASSEMBLY FOR #5 BAR ON STUB ABUTMENTS

NOTES

Splicer bars shall be deformed with threaded ends and have a minimum 60 ksi yield strength.
 All reinforcement shall be lapped and tied to the splicer bars.
 Bar splicer assemblies shall be epoxy coated according to the requirements for reinforcement bars. See Section 508 of the Standard Specifications.
 See approved list of bar splicer assemblies and mechanical splicers for alternatives.

BSD-1 2-17-2017

DESIGNED DAB
 CHECKED VHV
 DRAWN baliva
 CHECKED DAB VHV

PASSED

 ENGINEER OF BRIDGES AND STRUCTURES

DATE MAY 9, 2017
 REVISED
 REVISED

STATE OF ILLINOIS
 DEPARTMENT OF TRANSPORTATION

BAR SPLICER ASSEMBLY AND MECHANICAL SPLICER DETAILS
 SN 028-7049

SHEET NO. 2 OF 2 SHEETS

F.A.P. RTE.	SECTION	COUNTY	TOTAL SHEETS	SHEET NO.
853	LOAD POSTING MITIGATION 2018-1	FAYETTE	7	7
CONTRACT NO. 78603			ILLINOIS FED. AID PROJECT	