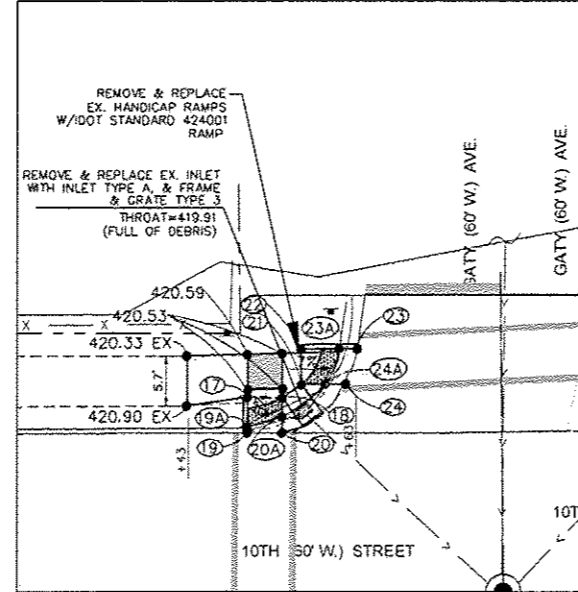
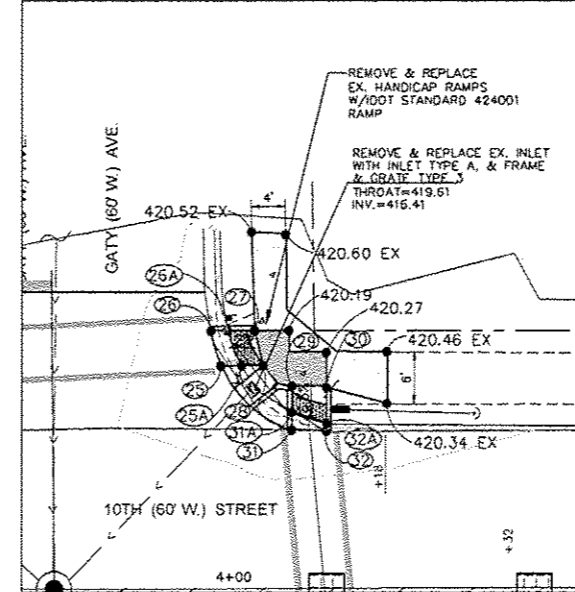


MISSOURI AVE. (NORTHEAST QUADRANT)

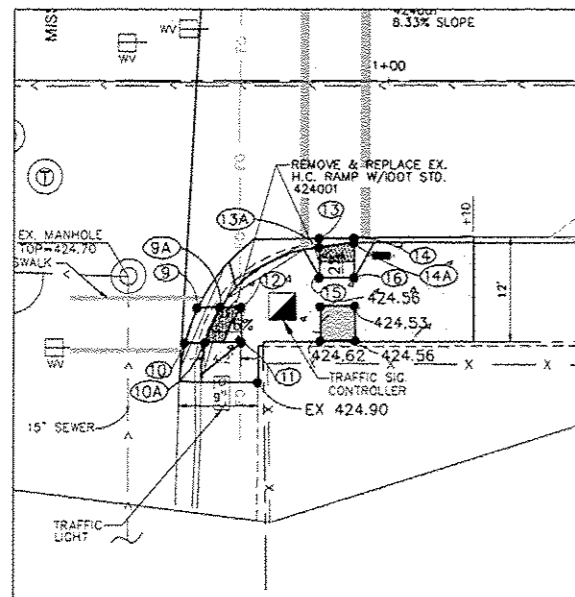
NOTE:
 4'x4' TURNING AREA
 NO SLOPE GREATER THAN 1.5%



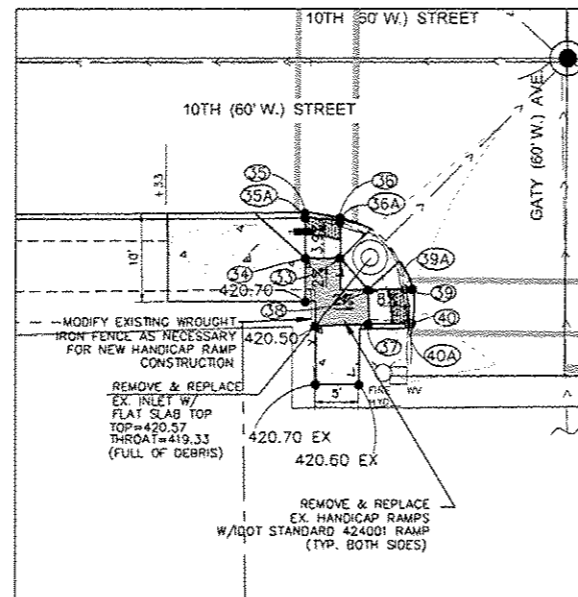
GATY AVE. (NORTHWEST QUADRANT)



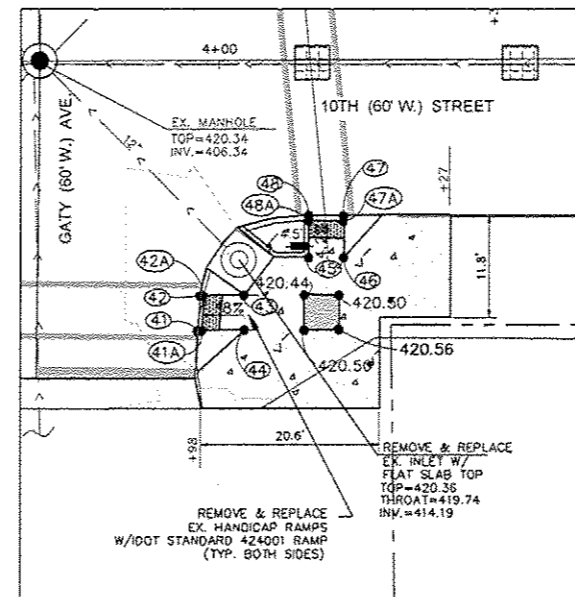
GATY AVE. (NORTHEAST QUADRANT)



MISSOURI AVE. (SOUTHEAST QUADRANT)



GATY AVE. (SOUTHWEST QUADRANT)

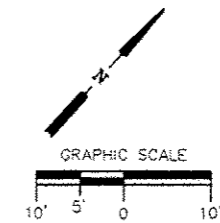


GATY AVE. (SOUTHEAST QUADRANT)

LEGEND

- PROPOSED DETECTABLE WARNING
- PROPOSED TURNING AREA

NOTE:
 RELOCATE EXISTING UTILITY POLES AS NECESSARY FOR NEW HANDICAP RAMP CONSTRUCTION. COORDINATE WITH UTILITY COMPANIES.



Hurst-Rosche, Inc.
 5 Bank Square
 E. St. Louis, IL
 618.398.0890
 www.hurst-rosche.com
 HILLSBORO, IL
 MARION, IL
 SPRINGFIELD, IL
 ARNOLD, MO
 NEOSHO, MO

10TH STREET REHABILITATION
 MISSOURI AVENUE TO SUMMIT AVENUE
 CITY OF EAST ST. LOUIS
 ST. CLAIR COUNTY, ILLINOIS

MARK	DATE	DESCRIPTION
	05/2017	

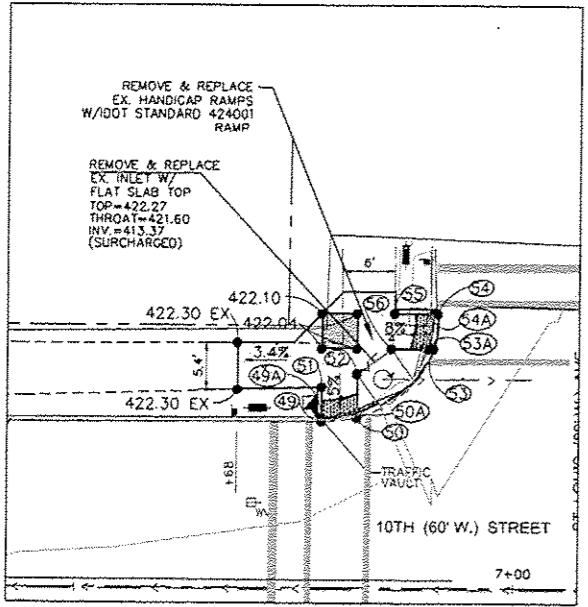
PROJECT NO: 192-1705
 DESIGN: JJC DRAWN: SDD CHECK: TAS

SIDEWALK
 RAMPS
 MISSOURI &
 GATY AVENUES

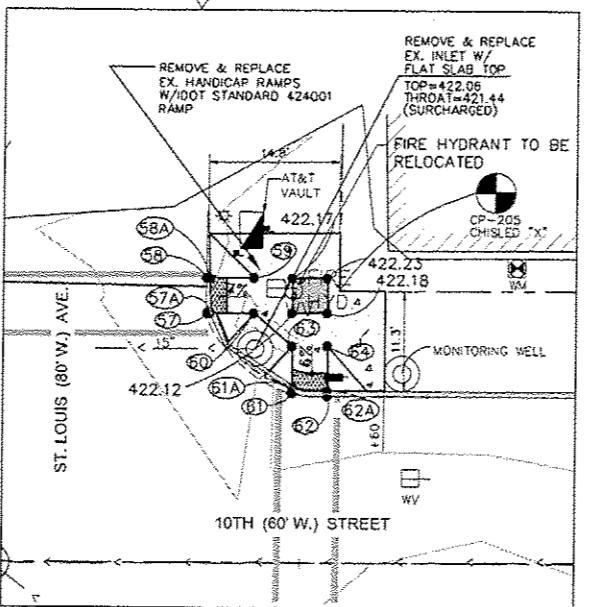


Hurst-Rosche, Inc.
 5 Bank Square
 E. St. Louis, IL
 618.398.0890
 www.hurst-rosche.com

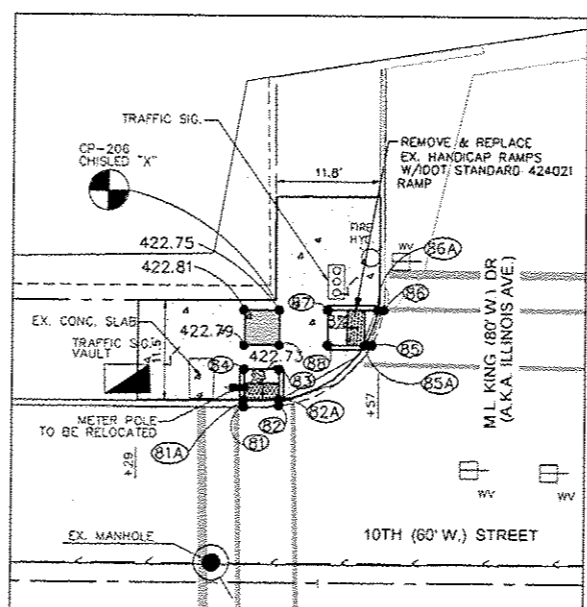
HILLSBORO, IL
 MARION, IL
 SPRINGFIELD, IL
 ARNOLD, MO
 NEOSHO, MO



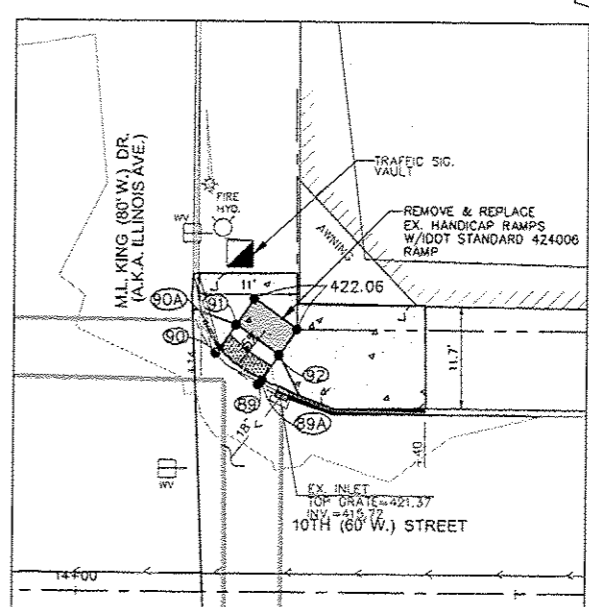
ST. LOUIS AVE. (NORTHWEST QUADRANT)



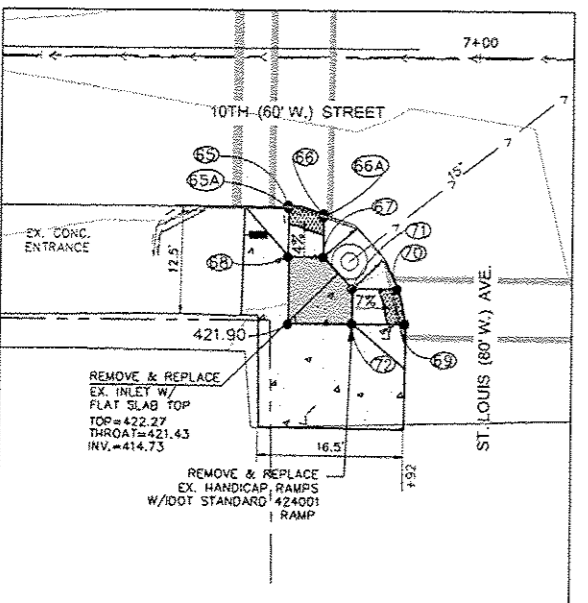
ST. LOUIS AVE. (NORTHEAST QUADRANT)



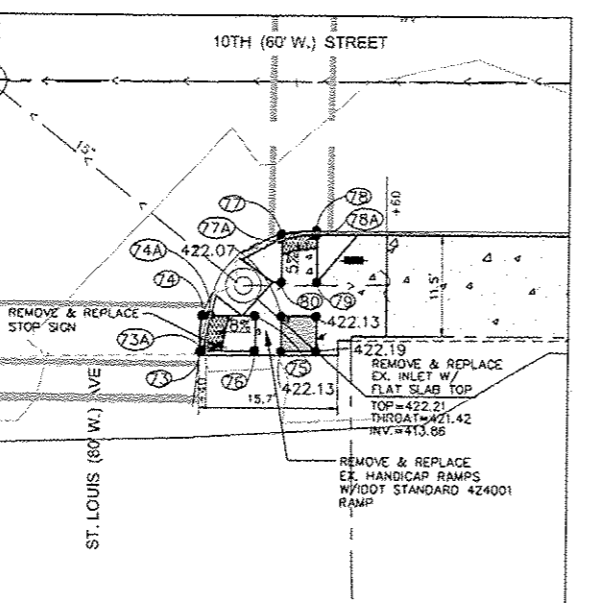
M.L. KING DRIVE (NORTHWEST QUADRANT)



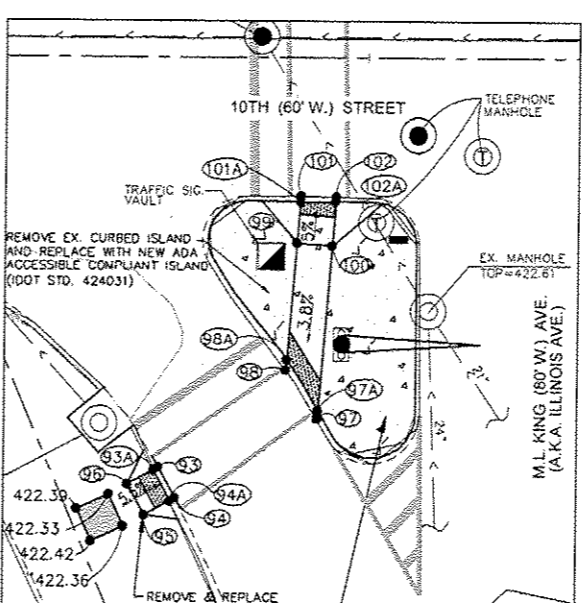
M.L. KING DRIVE (NORTHEAST QUADRANT)



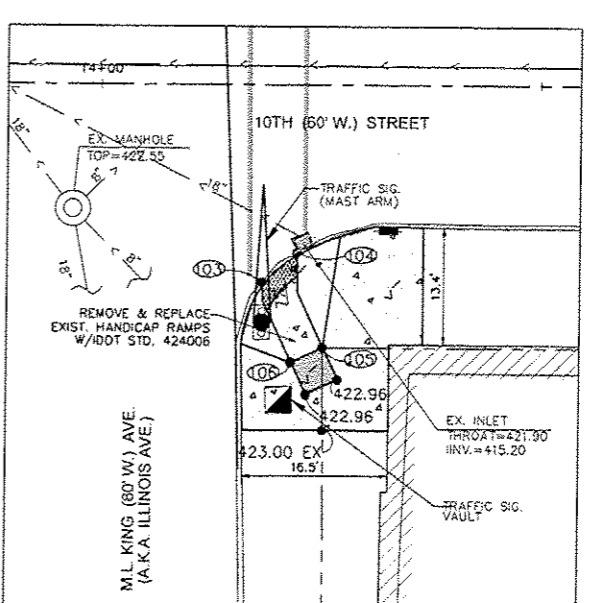
ST. LOUIS AVE. (SOUTHWEST QUADRANT)



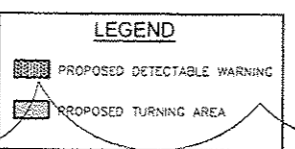
ST. LOUIS AVE. (SOUTHEAST QUADRANT)



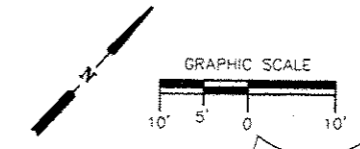
M.L. KING DRIVE (SOUTHWEST QUADRANT)



M.L. KING DRIVE (SOUTHEAST QUADRANT)



NOTE:
 RELOCATE EXISTING UTILITY POLES AS NECESSARY FOR NEW HANDICAP RAMP CONSTRUCTION. COORDINATE WITH UTILITY COMPANIES.



10TH STREET REHABILITATION
 MISSOURI AVENUE TO SUMMIT AVENUE
 CITY OF EAST ST. LOUIS
 ST. CLAIR COUNTY, ILLINOIS

MARK	DATE	DESCRIPTION
	05/20/17	

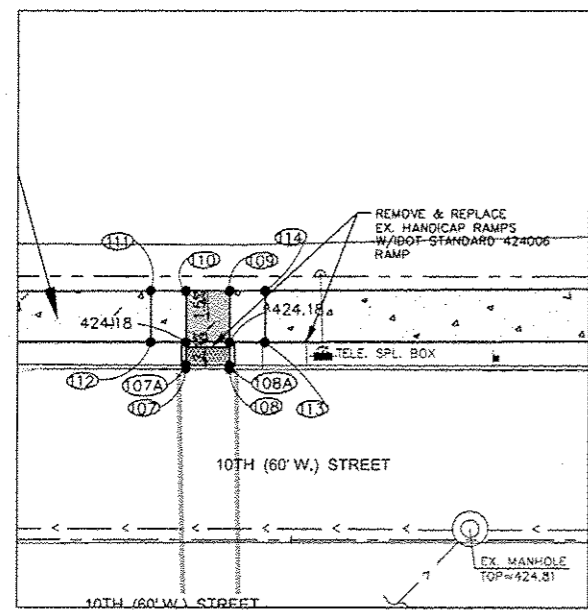
PROJECT NO: 192-1755
 DESIGN: JJC
 DRAWN: BDD
 CHECK: TAS

SIDEWALK RAMPS
 ST. LOUIS AVE. & M.L. KING DR.

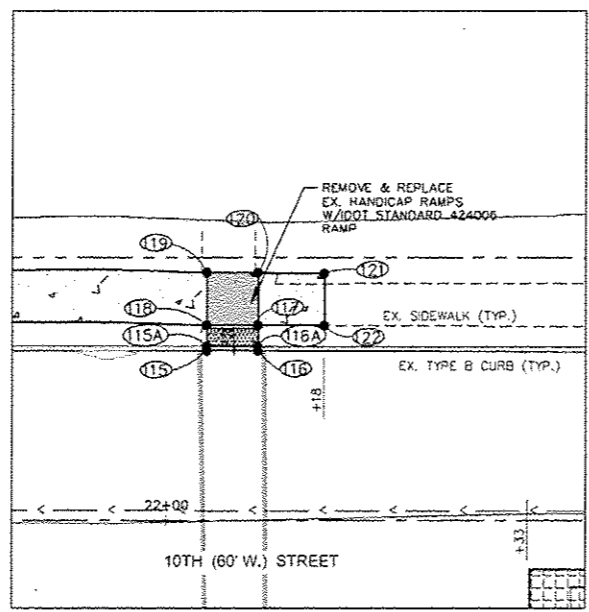
Contract # 97638



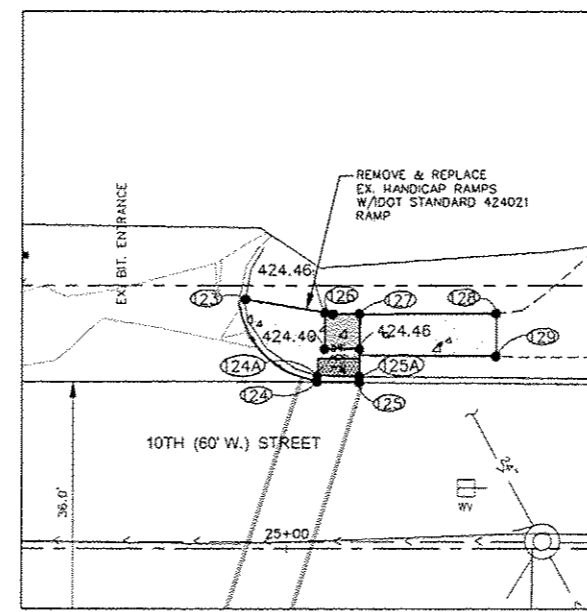
Hurst-Rosche, Inc.
 PROFESSIONAL ENGINEERS 18-0000
 5 Bank Square
 E. St. Louis, IL
 618.398.0890 t
 www.hurst-rosche.com
 HILLSBORO, IL
 MARION, IL
 SPRINGFIELD, IL
 ARNOLD, MO
 NEOSHO, MO



OHIO AVE. (NORTHWEST QUADRANT)



OHIO AVE. (NORTHEAST QUADRANT)

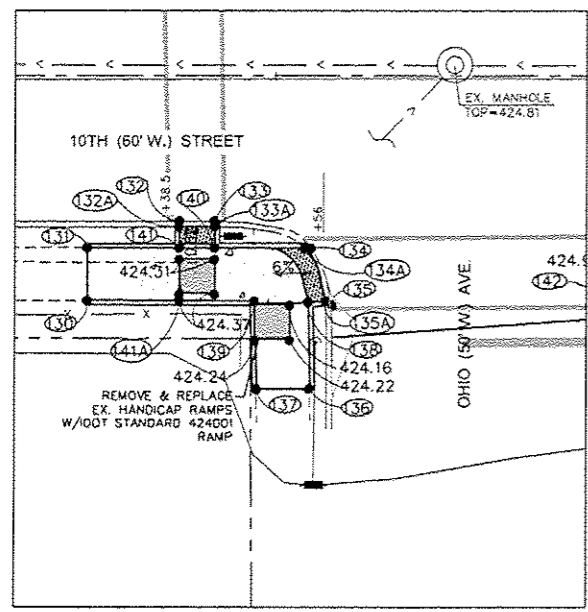


COLLEGE AVE. (NORTHWEST QUADRANT)

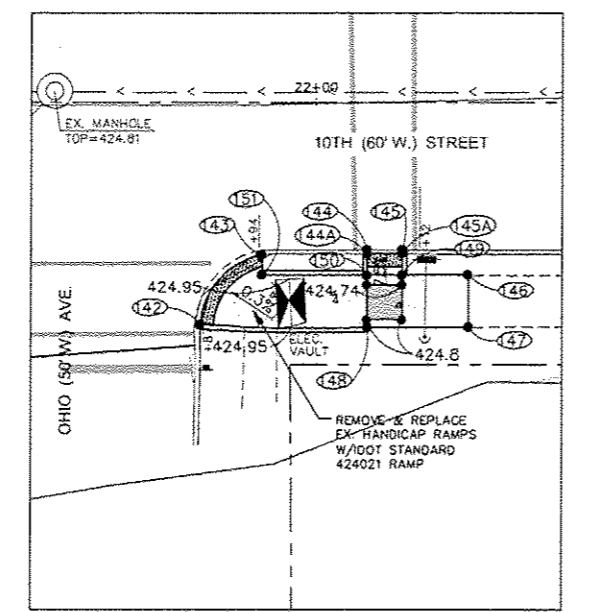
LEGEND

PROPOSED DETECTABLE WARNING

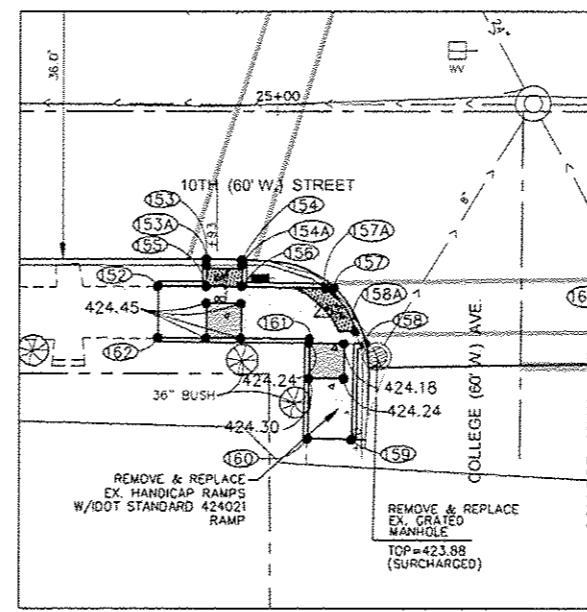
PROPOSED TURNING AREA



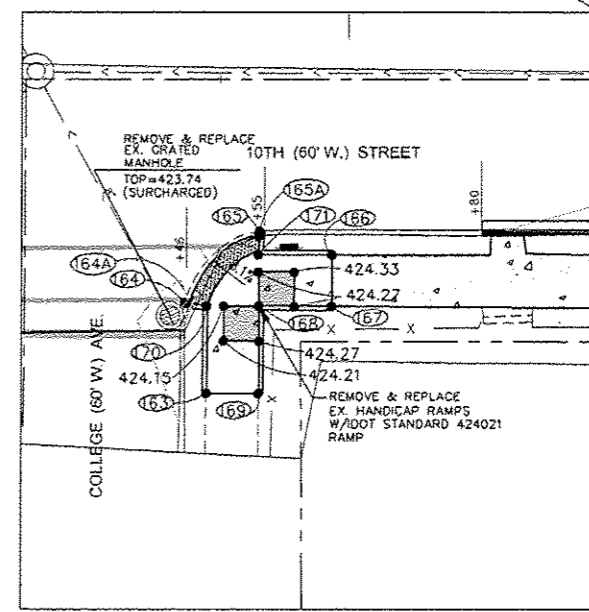
OHIO AVE. (SOUTHWEST QUADRANT)



OHIO AVE. (SOUTHEAST QUADRANT)

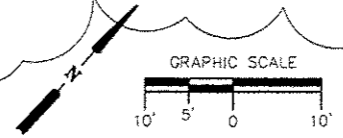


COLLEGE AVE. (SOUTHWEST QUADRANT)



COLLEGE AVE. (SOUTHEAST QUADRANT)

NOTE:
 RELOCATE EXISTING UTILITY POLES AS NECESSARY FOR NEW HANDICAP RAMP CONSTRUCTION. COORDINATE WITH UTILITY COMPANIES.



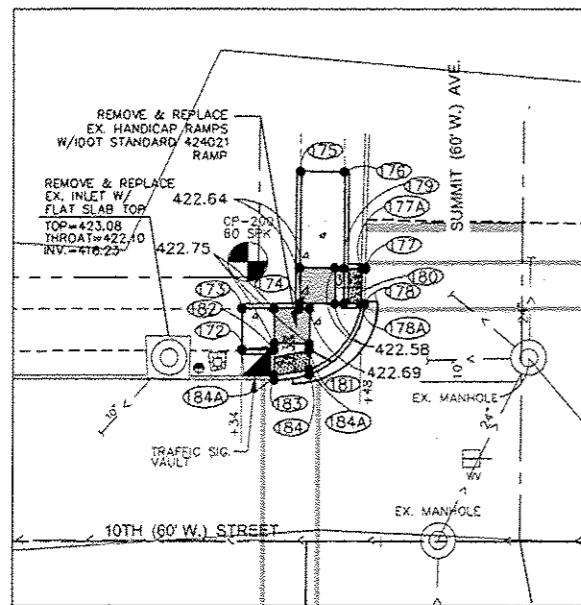
10TH STREET REHABILITATION
 MISSOURI AVENUE TO SUMMIT AVENUE
 CITY OF EAST ST. LOUIS
 ST. CLAIR COUNTY, ILLINOIS

MARK	DATE	DESCRIPTION
	08/20/17	

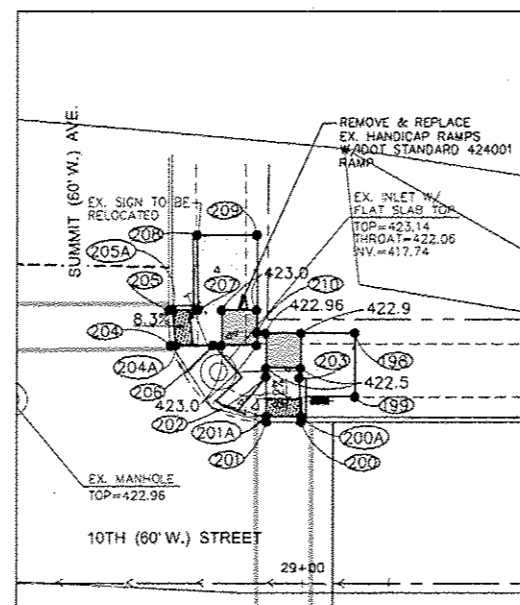
PROJECT NO. 192-1705	DESIGN: JJC	DRAWN: SSD	CHECK: TAS
----------------------	-------------	------------	------------

SIDEWALK RAMPS
 OHIO & COLLEGE AVENUES

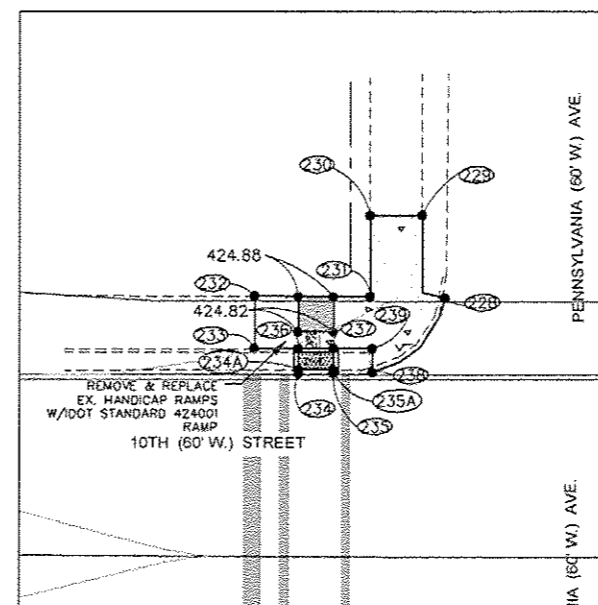
Contract # 97638



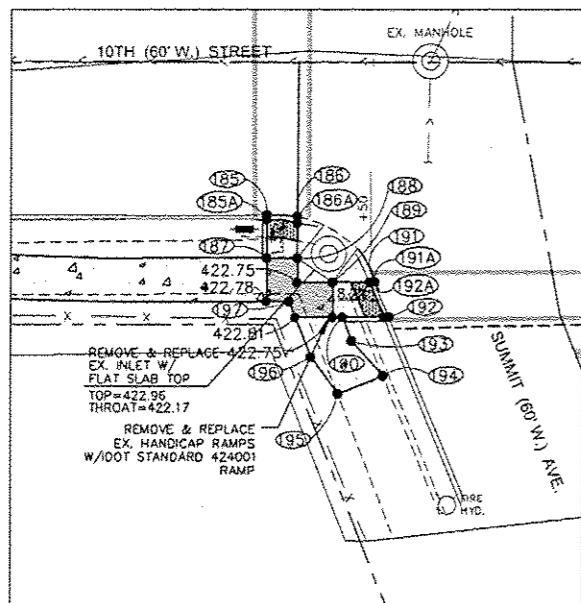
SUMMIT AVE. (NORTHWEST QUADRANT)



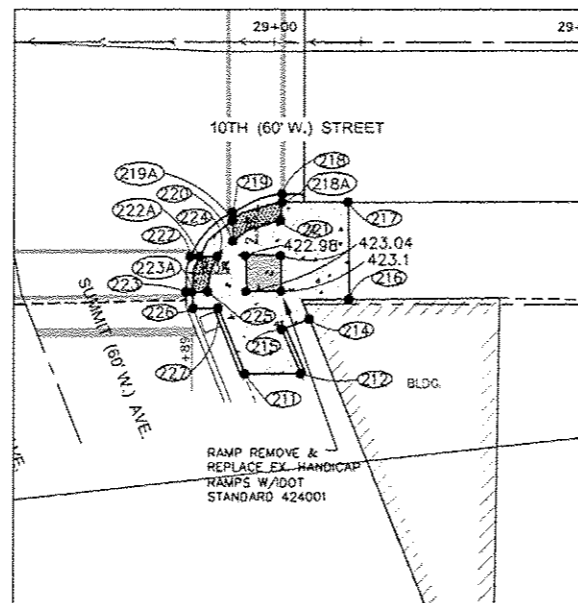
SUMMIT AVE. (NORTHEAST QUADRANT)



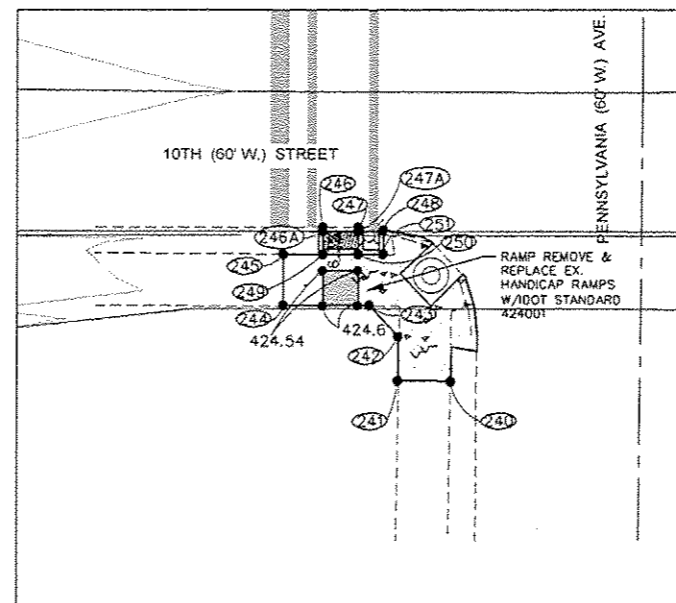
PENNSYLVANIA AVE. (NORTHWEST QUADRANT)



SUMMIT AVE. (SOUTHWEST QUADRANT)



SUMMIT AVE. (SOUTHEAST QUADRANT)



PENNSYLVANIA AVE. (SOUTHWEST QUADRANT)

LEGEND

PROPOSED DETECTABLE WARNING

PROPOSED TURNING AREA

GRAPHIC SCALE

10' 5' 0' 10'

NOTE:
RELOCATE EXISTING UTILITY POLES AS NECESSARY FOR NEW HANDICAP RAMP CONSTRUCTION. COORDINATE WITH UTILITY COMPANIES.



Hurst-Rosche, Inc.
PROFESSIONAL ENGINEERS & ARCHITECTS

5 Bank Square
E. St. Louis, IL
618.398.0890
www.hurst-rosche.com

HILLSBORO, IL
MARION, IL
SPRINGFIELD, IL
ARNOLD, MO
NEOSHO, MO

10TH STREET REHABILITATION
MISSOURI AVENUE TO SUMMIT AVENUE
CITY OF EAST ST. LOUIS
ST. CLAIR COUNTY, ILLINOIS

MARK	DATE	DESCRIPTION
	05/2017	

PROJECT NO: 192-1765
DESIGN: JJC DRAWN: SSD CHECK: TAS

SIDEWALK RAMPS
SUMMIT AND
PENNSYLVANIA
AVENUES

20

SHEET 20 OF 21

© 2017 HURST-ROSCHÉ, INC.

Contract # 97638

COORDINATES TABLE (SHEET 17)

NUMBER	NORTH	EAST	EX_ELEV	PR_ELEV
1	712063.39	2300168.10	425.00	---
1A	712063.73	2300168.46	---	425.02
2	712060.56	2300170.93	425.00	---
2A	712061.01	2300171.41	---	425.02
3	712066.98	2300171.97	---	425.10
4	712064.04	2300174.69	---	425.10
5	712065.23	2300183.86	424.50	---
5A	712065.23	2300183.86	---	424.52
6	712067.95	2300186.78	424.50	---
6A	712068.44	2300186.32	---	424.52
7	712068.49	2300180.83	---	424.80
8	712071.21	2300183.76	---	424.80
9	712073.36	2300203.53	424.50	---
9A	712075.20	2300205.47	---	424.60
10	712019.43	2300205.20	424.50	---
10A	712021.06	2300206.92	---	424.60
11	712023.94	2300209.94	---	424.80
12	712026.84	2300207.18	---	424.80
13	712038.72	2300208.41	424.40	---
13A	712037.97	2300209.11	---	424.44
14	712041.46	2300211.32	424.40	---
14A	712041.05	2300211.70	---	424.41
15	712035.41	2300211.48	---	424.50
16	712038.13	2300214.41	---	424.50
17	712244.01	2300369.85	---	420.50
18	712246.67	2300372.84	---	420.52
19	712241.04	2300372.58	420.30	---
19A	712241.52	2300372.14	---	420.32
20	712243.75	2300375.53	420.30	---
20A	712245.10	2300374.28	---	420.35
21	712249.31	2300373.40	---	420.42
22	712252.21	2300370.65	---	420.50
23	712256.67	2300375.36	420.10	---
23A	712255.24	2300373.85	---	420.20
24	712252.82	2300377.11	420.10	---
24A	712251.18	2300375.38	---	420.20
25	712279.38	2300403.19	419.90	---
25A	712281.05	2300404.92	---	420.08
26	712281.54	2300399.66	419.90	---
26A	712282.85	2300401.04	---	420.08
27	712284.95	2300403.26	---	420.13
28	712282.70	2300406.70	---	420.07
29	712283.22	2300410.73	---	420.19
30	712285.85	2300413.75	---	420.21
31	712281.03	2300412.76	419.90	---
31A	712279.55	2300414.17	---	420.00
32	712282.18	2300417.19	419.90	---
32A	712282.84	2300416.35	---	419.94
33	712213.06	2300403.14	---	420.60
34	712210.34	2300400.21	---	420.60
35	712214.13	2300396.70	420.40	---
35A	712213.73	2300397.08	---	420.42
36	712216.47	2300399.99	420.40	---
36A	712216.08	2300400.35	---	420.42
37	712209.68	2300410.74	---	420.39
38	712212.57	2300407.97	---	420.46
39	712216.11	2300411.67	420.10	---
39A	712215.55	2300411.08	---	420.14
40	712213.18	2300414.29	420.00	---
40A	712212.92	2300414.03	---	420.02
41	712237.18	2300440.99	419.90	---
41A	712237.53	2300441.38	---	419.92
42	712240.34	2300438.50	419.90	---
42A	712240.66	2300438.87	---	419.92
43	712243.80	2300442.11	---	420.28
44	712240.91	2300444.88	---	420.28
45	712252.01	2300444.64	---	420.39
46	712254.72	2300447.57	---	420.41
47	712258.25	2300444.31	420.20	---
47A	712257.79	2300444.76	---	420.22
48	712255.56	2300441.34	420.20	---
48A	712255.11	2300441.80	---	420.22

COORDINATES TABLE (SHEET 18)

NUMBER	NORTH	EAST	EX_ELEV	PR_ELEV
49	712464.27	2300612.96	421.80	---
49A	712464.55	2300612.72	---	421.82
50	712467.32	2300615.59	421.80	---
50A	712467.27	2300617.11	---	421.82
51	712467.14	2300610.30	---	421.97
52	712470.99	2300612.19	---	422.03
53	712479.00	2300616.65	421.60	---
53A	712478.57	2300616.20	---	421.62
54	712482.24	2300614.27	421.60	---
54A	712481.83	2300613.82	---	421.62
55	712478.93	2300610.66	---	421.95
56	712475.73	2300613.13	---	421.95
57	712512.80	2300651.45	421.60	---
57A	712513.03	2300651.71	---	421.62
58	712515.70	2300648.72	421.60	---
58A	712515.92	2300648.96	---	421.62
59	712519.34	2300652.64	---	421.96
60	712516.40	2300655.36	---	422.00
61	712512.70	2300664.74	421.80	---
61A	712513.08	2300664.47	---	421.82
62	712515.19	2300667.91	421.80	---
62A	712515.65	2300667.48	---	421.82
63	712516.65	2300661.09	---	422.08
64	712519.38	2300664.01	---	422.13
65	712438.07	2300637.69	421.80	---
65A	712437.90	2300637.85	---	421.82
66	712440.12	2300641.25	421.70	---
66A	712439.88	2300641.47	---	421.72
67	712436.52	2300644.58	---	421.97
68	712433.80	2300641.65	---	422.03
69	712437.26	2300656.61	421.40	---
70	712439.60	2300653.25	421.40	---
71	712436.11	2300649.48	---	421.80
72	712433.17	2300652.20	---	421.80
73	712469.43	2300691.71	421.50	---
73A	712469.64	2300691.94	---	421.52
74	712472.51	2300689.15	421.50	---
74A	712473.15	2300689.84	---	421.52
75	712476.57	2300693.53	---	421.92
76	712473.64	2300696.25	---	421.92
77	712485.43	2300689.34	421.90	---
77A	712484.95	2300689.78	---	421.92
78	712488.42	2300692.01	421.90	---
78A	712488.08	2300692.33	---	421.92
79	712484.18	2300695.98	---	422.20
80	712481.40	2300693.11	---	422.20
81	712915.99	2301098.80	422.70	---
81A	712916.49	2301098.26	---	421.72
82	712918.71	2301101.66	422.62	---
82A	712919.24	2301101.15	---	422.64
83	712921.75	2301098.83	---	422.70
84	712919.04	2301095.89	---	422.78
85	712930.93	2301104.62	422.10	---
85A	712930.35	2301103.95	---	422.12
86	712934.80	2301102.91	422.10	---
86A	712934.34	2301102.37	---	422.12
87	712930.46	2301098.23	---	422.50
88	712927.54	2301100.92	---	422.45
89	712972.34	2301154.42	421.80	---
89A	712973.08	2301154.32	---	421.82
90	712971.67	2301148.46	421.80	---
90A	712972.29	2301148.38	---	421.82
91	712975.63	2301147.93	---	422.00
92	712976.43	2301153.87	---	422.00
93	712856.76	2301133.33	422.10	---
93A	712856.19	2301133.11	---	422.12
94	712855.50	2301137.13	422.10	---
94A	712854.87	2301136.88	---	422.12
95	712851.70	2301135.87	---	422.30
96	712852.96	2301132.07	---	422.30
97	712873.05	2301142.75	422.40	---
97A	712873.80	2301142.13	---	422.42
98	712874.89	2301136.35	422.40	---
98A	712875.60	2301135.62	---	422.42
99	712886.08	2301127.33	---	422.91
100	712888.57	2301130.43	---	422.89
101	712890.30	2301123.98	422.50	---
101A	712889.78	2301124.38	---	422.56
102	712892.95	2301128.99	422.56	---
102A	712892.61	2301127.23	---	422.62
103	712937.00	2301184.28	422.20	---
104	712942.14	2301184.88	422.20	---
105	712936.27	2301194.45	---	422.90
106	712932.56	2301192.96	---	422.90

COORDINATES TABLE (SHEET 19)

NUMBER	NORTH	EAST	EX_ELEV	PR_ELEV
107	713457.17	2301683.18	424.10	---
107A	713456.86	2301683.46	---	424.12
108	713460.25	2301687.14	424.10	---
108A	713460.56	2301686.86	---	424.12
109	713466.77	2301681.08	---	424.27
110	713463.37	2301677.42	---	424.27
111	713460.65	2301674.48	---	424.50
112	713456.37	2301678.45	---	424.40
113	713465.19	2301688.02	---	424.40
114	713469.49	2301684.02	---	424.50
115	713502.08	2301732.41	424.30	---
115A	713502.43	2301732.08	---	424.32
116	713506.00	2301736.67	424.30	---
116A	713506.38	2301736.35	---	424.32
117	713508.12	2301734.74	---	424.48
118	713504.19	2301730.46	---	424.48
119	713508.61	2301726.37	---	424.60
120	713512.54	2301730.65	---	424.60
121	713511.58	2301736.25	---	424.90
122	713513.25	2301740.27	---	424.80
123	713706.29	2301939.52	424.00	---
124	713704.93	2301951.87	424.20	---
124A	713705.65	2301951.44	---	424.22
125	713708.15	2301955.41	424.30	---
125A	713708.65	2301954.97	---	424.32
126	713711.82	2301947.96	---	424.48
127	713713.89	2301950.17	---	424.57
128	713724.50	2301961.53	424.70	---
129	713720.90	2301964.82	424.60	---
130	713415.37	2301705.88	424.80	---
131	713421.79	2301703.24	424.70	---
132	713431.18	2301708.87	424.26	---
132A	713429.13	2301707.51	---	424.28
133	713433.90	2301711.80	424.26	---
133A	713433.41	2301712.01	---	424.28
134	713439.10	2301722.01	424.38	---
134A	713438.58	2301721.45	---	424.40
135	713435.92	2301728.22	424.02	---
135A	713435.76	2301727.35	---	424.04
136	713427.20	2301732.75	424.70	---
137	713423.10	2301728.37	424.70	---
138	713434.31	2301725.98	---	424.16
139	713430.24	2301721.37	---	424.18
140	713431.64	2301713.91	---	424.30
141	713428.92	2301710.96	---	424.30
141A	713424.49	2301715.06	---	424.38
142	713457.25	2301749.88	424.80	---
143	713467.83	2301749.61	424.80	---
144	713476.39	2301758.02	424.50	---
144A	713476.04	2301758.33	---	424.52
145	713479.10	2301760.95	424.50	---
145A	713478.76	2301761.27		