

GENERAL NOTES

1. ANY FACILITIES OR APPURTENANCES, WHICH ARE THE PROPERTY OF ANY PUBLIC UTILITY LOCATED WITHIN THE LIMITS OF CONSTRUCTION, SHALL BE RELOCATED OR ADJUSTED BY THEIR RESPECTIVE OWNERS. THE CONTRACTOR SHALL NOTIFY AND COOPERATE WITH THE OWNERS OF ANY SUCH FACILITY IN THEIR REMOVAL AND ADJUST HIS OPERATIONS, IN ORDER THAT, THE UTILITY'S OPERATIONS AND THE CONSTRUCTION OF THIS PROJECT MAY PROGRESS IN A REASONABLE MANNER.
2. THE TYPE, SIZE, AND LOCATION OF UTILITIES, AS DEUNTEATED IN THESE TOPOGRAPHIC LAND SURVEY DOCUMENTS AND/OR CIVIL ENGINEERING DESIGN DOCUMENTS, HAVE BEEN DETERMINED BY REVIEW OF AVAILABLE EXISTING "AS-BUILT" OR RECORD DRAWINGS, FIELD SURVEY OF J.U.L.I.E. MARKED UTILITIES, OR FIELD SURVEY OF ABOVE GROUND SURFACE UTILITY FEATURES. THE OWNER AND ENGINEER HAVE NOT UNDERTAKEN SUBSURFACE EXPLORATORY INVESTIGATIONS TO CONFIRM OR VERIFY THE UTILITIES SHOWN ON THESE DOCUMENTS; THEREFORE THEIR EXACT LOCATION, SIZE, AND FUNCTION MUST BE CONSIDERED APPROXIMATE AND MUST BE FIELD CONFIRMED BY THE CONTRACTOR.
3. THE ENGINEER AND OWNER FURTHER DO NOT WARRANT THAT ALL UTILITIES HAVE BEEN ILLUSTRATED ON THESE DOCUMENTS. THE CONTRACTOR IS SOLELY RESPONSIBLE FOR CONTACTING J.U.L.I.E. FOR FIELD VERIFICATION OF ALL UTILITIES ON THE SITE PRIOR TO COMMENCEMENT OF CONSTRUCTION. IF THE CONTRACTOR DETERMINES THAT SUBSTANTIAL DISCREPANCY EXISTS BETWEEN FIELD VERIFIED UTILITIES AND THESE PLANS, WHICH WOULD SIGNIFICANTLY AFFECT THE FUNCTION, COST, OR PERFORMANCE OF THE PROJECT, THE CONTRACTOR SHALL IMMEDIATELY CONTACT THE ENGINEER FOR CLARIFICATION AND PROJECT DIRECTION.
4. THE CONTRACTOR SHALL CONFINE HIS OPERATIONS TO THE AREA LOCATED WITHIN THE TEMPORARY CONSTRUCTION EASEMENTS, AS SHOWN ON THE PLANS. ANY AREA DISTURBED BEYOND THESE LIMITS SHALL BE RESTORED TO ITS ORIGINAL CONDITION AT THE CONTRACTOR'S EXPENSE.
5. ALL EXISTING ROADWAY FEATURES, SUCH AS CULVERTS, HEADWALLS, RIP RAP, CURB, PAVEMENT, FENCING, ETC., LOCATED WITHIN THE CONSTRUCTION LIMITS ARE TO BE REMOVED UNLESS NOTED OTHERWISE ON THE PLANS.
6. EVERY TREE SHALL BE SAVED, IF POSSIBLE. THE ENGINEER IN THE FIELD WILL VERIFY AND MARK ALL TREES REQUIRED TO BE REMOVED. SHOULD THE ENGINEER'S DECISION INCREASE OR DECREASE THE QUANTITIES OF WORK TO BE PERFORMED FROM THE PLANS, THE CONTRACTOR SHALL ACCEPT PAYMENT AS STATED IN ARTICLE 104.03 OF THE STANDARD SPECIFICATIONS. TREES OUTSIDE THE LIMITS OF CONSTRUCTION SHALL NOT BE DISTURBED UNLESS DESIGNATED BY THE ENGINEER.
7. THE SAW CUTTING OF EXISTING PAVEMENT, NECESSARY FOR ITS REMOVAL, SHALL BE INCLUDED IN THE COST OF THE ITEM FOR WHICH THE SAW CUT IS BEING MADE. THE REMOVAL OF ALL OIL & CHIP PAVEMENT SHALL BE INCLUDED IN THE PAVEMENT REMOVAL QUANTITY. SEE SPECIAL PROVISIONS FOR ADDITIONAL INFORMATION.
8. ALL TEMPORARY AND PERMANENT EROSION CONTROL DEVICES SHALL BE IMPLEMENTED AS SHOWN ON THE EROSION CONTROL PLAN. IT IS THE CONTRACTOR'S RESPONSIBILITY TO INSURE THAT ALL EROSION AND DISPLACED SEDIMENT DOES NOT MIGRATE OFF SITE. IF UNEXPECTED EROSION OR SEDIMENTATION OCCURS, OR IF THE EROSION PLAN STRUCTURES BECOME DAMAGED, THE CONTRACTOR SHALL PROVIDE SUFFICIENT MEASURES TO REPAIR, REPLACE, OR INSTALL EROSION CONTROL STRUCTURES TO INSURE OFF-SITE DAMAGE DOES NOT OCCUR. ANY SEDIMENT OR EROSION DAMAGE WHICH OCCURS OFF-SITE SHALL BE REPAIRED BY THE CONTRACTOR AT HIS/HER EXPENSE.
9. ALL EARTH SURFACES DISTURBED BY CONSTRUCTION, OR AS DIRECTED BY THE ENGINEER, SHALL BE SEEDED AND MULCHED ACCORDING TO SECTIONS 250 AND 251 OF THE STANDARD SPECIFICATIONS FOR ROAD AND BRIDGE CONSTRUCTION. ALL TEMPORARY EROSION CONTROL SEEDING SHALL BE IMPLEMENTED ACCORDING TO SECTION 280 OF THE STANDARD SPECIFICATIONS FOR ROAD AND BRIDGE CONSTRUCTION. COST BEYOND CONSTRUCTION LIMITS IS THE RESPONSIBILITY OF CONTRACTOR.
10. ANY CULVERTS DAMAGED BY OR REMOVED BY THE CONTRACTOR, OTHER THAN THOSE NOTED ON THE PLANS TO BE REMOVED, WILL HAVE TO BE REMOVED AND/OR REPLACED AT THE CONTRACTOR'S SOLE EXPENSE.
11. ALL MATERIALS, SUCH AS FRAMES AND GRATES AND STORM SEWER PIPE SCHEDULED FOR REMOVAL, THAT ARE CONSIDERED TO BE SUITABLE FOR FUTURE USE, SHALL BE SALVAGED AND STOCKPILED AS DIRECTED BY THE ENGINEER. ALL OTHER MATERIALS SCHEDULED FOR REMOVAL, BUT NOT SALVAGED, SHALL BE DISPOSED OF BY THE CONTRACTOR AT HIS/HER EXPENSE.
12. THE CONTRACTOR IS ADVISED THAT THE PROPOSED STORM SEWER ROADWAY CROSSINGS MAY CONFLICT WITH THE PROPOSED LINE STABILIZATION OPERATIONS DUE TO MINIMAL COVER OVER THE PIPES. THE CONTRACTOR SHALL EXERCISE EXTREME CAUTION IN THESE AREAS SO AS NOT TO CAUSE ANY DAMAGE TO THE PROPOSED STORM SEWERS. THIS MAY NECESSITATE VARYING THE METHODS OF LINE STABILIZATION. NO DIRECT PAYMENT SHALL BE MADE FOR THESE ACCOMMODATIONS.
13. ALL TRAFFIC CONTROL, INCLUDING, BUT NOT LIMITED TO WORK ZONE, TEMPORARY, AND PERMANENT, SHALL BE FURNISHED, INSTALLED, MAINTAINED, RELOCATED, AND/OR REMOVED ACCORDING TO SECTION 701 OF THE LATEST EDITION OF THE IDOT STANDARD SPECIFICATIONS FOR ROAD AND BRIDGE CONSTRUCTION AND THE LATEST EDITION OF THE MANUAL ON UNIFORM TRAFFIC CONTROL DEVICES.
14. TRAFFIC CONTROL SIGNS SHALL BE 48" FLUORESCENT ORANGE.
15. THE CONTRACTOR IS RESPONSIBLE FOR CONTACTING THE CITY OF O'FALLON AT LEAST FORTY-EIGHT (48) HOURS IN ADVANCE PRIOR TO COMMENCEMENT OF ANY CONSTRUCTION ACTIVITIES OR WORK REQUIRING INSPECTION OR APPROVAL BY THE AFFECTED UNITS OF GOVERNMENT.
16. IT IS NOT WARRANTED THAT THESE PLANS CONTAIN COMPLETE INFORMATION REGARDING EASEMENTS, RESERVATIONS, RESTRICTIONS, RIGHTS-OF-WAY, BUILDING LINE SETBACKS, AND OTHER ENCUMBRANCES. FOR COMPLETE INFORMATION, A TITLE OPINION OR COMMITMENT FOR TITLE INSURANCE SHOULD BE OBTAINED AND THOROUGHLY REVIEWED.
17. PRIOR TO CONSTRUCTING ANY ENTRANCE, THE CONTRACTOR SHALL NOTIFY THE PROPERTY OWNER AND RESIDENT ENGINEER, INFORMING THEM OF CONSTRUCTION AND THE ESTIMATED DATES CONSTRUCTION WILL TAKE PLACE.
18. ALL GRADING, EXCAVATION AND FILL, NECESSARY TO SATISFY THE ADDITIONAL DRIVEWAY LENGTHS SHALL BE INCLUDED IN COST OF DRIVEWAY PLACEMENT TYPE. NO ADDITIONAL COST WILL BE ALLOWED.
19. ANY SUBSURFACE UTILITY WITHIN THE CONSTRUCTION LIMITS IS TO BE VERIFIED FOR ACTIVITY AND ALL ABANDONED UTILITIES ARE TO BE REMOVED. COST IS INCLUDED IN THE COST OF EARTH EXCAVATION.
20. IF ASH TREES ARE REMOVED ON THE PROJECT, THE CONTRACTOR SHALL BECOME FAMILIAR AND COMPLY WITH MEASURES SPECIFIED BY THE ILLINOIS DEPARTMENT OF AGRICULTURE (IDOA) TO PREVENT THE SPREAD OF THE EMERALD ASH BORER. THE IDOA INFORMATION FOR ASH TREE REMOVAL CAN BE FOUND ON THE IDOA WEBSITE AT [WWW.AGR.STATE.IL.US/EAB](http://WWW.AGR.STATE.IL.US/EAB).

COMMITMENTS

DUE TO POTENTIAL SUITABLE HABITAT FOR THE INDIANA BAT WITHIN THE PROJECT CORRIDOR, NO TREES ARE TO BE REMOVED BETWEEN APRIL 1ST AND SEPTEMBER 30TH OF ANY YEAR.

ANY TOPSOIL REMOVED FROM THE RATAY AND HENERFAUTH PROPERTY SHALL BE STOCK PILED WITHIN THE T.C.E FROM APPROXIMATE STATION 4+00 TO STATION 7+95 FOR THE PROPERTY OWNERS TO KEEP. THE CONTRACTOR SHALL CONTACT THE PROPERTY OWNER AT 618-632-4031 TO DETERMINE THE EXACT LOCATION OF THE STORAGE.

THE DRAIN TILES AT APPROXIMATE STATIONS 8+92 AND 9+58 WILL NOT BE CUT BACK TO THE RIGHT OF WAY TO ALLOW FOR FREE FLOW, BUT INSTEAD WILL BE CONNECTED TO THE STORM SEWER SYSTEM AS INDICATED ON SHEETS 13 AND 14.

LEGEND

LINE/TYPE LEGEND	SYMBOL LEGEND
-----	ELECTRIC CUYWIRE
-----	ELECTRIC METER
-----	ELECTRIC POWERPOLE
-----	ELECTRIC RISER
-----	FIBER OPTIC RISER
-----	GAS RISER
-----	GAS VALVE
-----	GENERAL SIGN
-----	STORM CATCH BASIN
-----	STORM CURB INLET
-----	STORM GRATE INLET
-----	STORM JUNCTION BOX
-----	TELEPHONE HANDHOLE
-----	TELEPHONE MANHOLE
-----	TELEPHONE RISER
-----	TREE - DECIDUOUS
-----	WATER - FIRE HYDRANT
-----	WATER - GATE VALVE
-----	MAILBOX

INDEX OF SHEETS

1. COVER SHEET
2. GENERAL NOTES
3. SUMMARY OF QUANTITIES
- 4-6. TYPICAL SECTIONS
7. SCHEDULES OF QUANTITIES
- 8-10. ROADWAY PLAN & PROFILE SHEETS
11. DETOUR PLAN
- 12-14. DRAINAGE PLAN & PROFILE
- 15-16. EROSION CONTROL PLAN
- 17-18. PAVEMENT MARKING & SIGNAGE PLAN
19. ENTRANCE DETAILS
20. MISCELLANEOUS DETAILS
- 21-26. CROSS SECTIONS

THOUVENOT, WADE & MOERCHEN, INC.  
ENGINEERS ♦ SURVEYORS ♦ PLANNERS



CORPORATE OFFICE  
4940 OLD COLLINSVILLE RD.  
SWANSEA, ILLINOIS 62226  
TEL (618) 624-4488  
FAX (618) 624-6688

WATERLOO OFFICE  
113 SOUTH MAIN STREET  
WATERLOO, ILLINOIS 62298  
TEL (618) 939-5050  
FAX (618) 939-3938

EDWARDSVILLE OFFICE  
600 COUNTRY CLUB VIEW, SUITE 1  
EDWARDSVILLE, ILLINOIS 62025  
TEL (618) 656-4040  
FAX (618) 656-4343

ST. LOUIS OFFICE  
720 OLIVE ST., SUITE 200A  
ST. LOUIS, MISSOURI 63101  
TEL (314) 241-6300  
FAX (314) 241-2391

ST. CHARLES OFFICE  
400 N. 5TH STREET, SUITE 101  
ST. CHARLES, MISSOURI 63301  
TEL (636) 724-8300  
FAX (636) 724-8304

PROFESSIONAL REGISTRATIONS	LICENSE NO.
ILLINOIS PROFESSIONAL DESIGN FIRM	184-001220
PROFESSIONAL ENGINEERING CORP.	62-035370
PROFESSIONAL STRUCTURAL ENGR. CORP.	81-005202
ILLINOIS PROF. LAND SURVEYING CORP.	048-000029
MISSOURI PROFESSIONAL ENGR. CORP.	MC 001528
MISSOURI LAND SURVEYING CORP.	MC 000346

SEAL

Signature: \_\_\_\_\_  
Expiration Date: \_\_\_\_\_

**STATEMENT OF RESPONSIBILITY**  
I hereby confirm that the document herein to be authorized by my seal is restricted to this sheet, and I hereby disclaim any responsibility for all other drawings, specifications, estimates, reports or other documents or instruments relating to or intended to be utilized for any other part of the architectural, engineering or survey project.

TITLE: PORTER RD. RECONSTRUCTION  
GENERAL NOTES  
14-00061-00-PW  
PROJECT: PORTER RD. RECONSTRUCTION  
CITY OF O'FALLON  
ST. CLAIR COUNTY  
ILLINOIS

REV	DATE	DESCRIPTION
1	5/29/17	ADDED ADDITIONAL COMMITMENTS
2		
3		

DRAWN BY: COK	SHEET
CHECKED BY: NTS	2
APPROVED BY: NTS	OF 26 SHEETS
PROJECT NUMBER: T25140517	PROJECT: PORTER RD. RECONSTRUCTION
<input checked="" type="checkbox"/> ISSUED FOR REVIEW	<input type="checkbox"/> ISSUED FOR BIDDING
<input type="checkbox"/> ISSUED FOR CONSTR.	<input type="checkbox"/> RECORD DRAWING

CODE NO.	PAY ITEM	UNIT	TOTAL QUANTITY
20200100	EARTH EXCAVATION	CU YD	1095
20800150	TRENCH BACKFILL	CU YD	179.5
25000110	SEEDING, CLASS 1A	ACRE	0.7
25000400	NITROGEN FERTILIZER NUTRIENT	POUND	63
25000500	PHOSPHORUS FERTILIZER NUTRIENT	POUND	63
25000600	POTASSIUM FERTILIZER NUTRIENT	POUND	63
25100115	MULCH, METHOD 2	ACRE	0.7
28000250	TEMPORARY EROSION CONTROL SEEDING	POUND	30
28000400	PERIMETER EROSION BARRIER	FOOT	873
28000500	INLET AND PIPE PROTECTION	EACH	17
30200650	PROCESSING MODIFIED SOIL 12"	SQ YD	4159
30201500	UME	TON	80.1
35102000	AGGREGATE BASE COURSE, TYPE B 8"	SQ YD	38
40200500	AGGREGATE SURFACE COURSE, TYPE A 6"	SQ YD	40
40201000	AGGREGATE FDR TEMPORARY ACCESS	TON	59
40600275	BITUMINOUS MATERIALS (PRIME COAT)	POUND	10303
40603085	HOT-MIX ASPHALT BINDER COURSE, IL-19.0, N70	TON	1086
40603315	HOT-MIX ASPHALT SURFACE COURSE, MIX "C", N70	TON	369
40800050	INCIDENTAL HOT-MIX ASPHALT RESURFACING	TON	16.4
42000300	PORTLAND CEMENT CONCRETE PAVEMENT 8"	SQ YD	16.6
42300200	PORTLAND CEMENT CONCRETE DRIVEWAY PAVEMENT, 6 INCH	SQ YD	60.6
44000100	PAVEMENT REMOVAL	SQ YD	3094

CODE NO.	PAY ITEM	UNIT	TOTAL QUANTITY
44000200	DRIVEWAY PAVEMENT REMOVAL	SQ YD	208.5
44000300	CURB REMOVAL	FOOT	30
50105220	PIPE CULVERT REMOVAL	FOOT	105
550A0050	STORM SEWERS, CLASS A, TYPE 1 12"	FOOT	646
550A0070	STORM SEWER, CLASS A, TYPE 1 15"	FOOT	200
550A0090	STORM SEWERS, CLASS A, TYPE 1 18"	FOOT	271
550A0110	STORM SEWERS, CLASS A, TYPE 1 21"	FOOT	317
60236200	INLETS, TYPE A, TYPE B GRATE	EACH	2
60605000	COMBINATION CONCRETE CURB AND GUTTER, TYPE B-6.24	FOOT	2238
67100100	MOBILIZATION	LSUM	1
70300100	SHORT TERM PAVEMENT MARKING	FOOT	116
70300220	TEMPORARY PAVEMENT MARKING - LINE 4"	FOOT	2278
78000200	THERMOPLASTIC PAVEMENT MARKING - LINE 4"	FOOT	2278
X0322936	REMOVE EXISTING FLARED END SECTION	EACH	2
X0325299	INLET MODIFICATION	EACH	3
X5510100	STORM SEWER REMOVAL	FOOT	229
X6024242	INLETS, SPECIAL NO. 1	EACH	12
X6024244	INLETS, SPECIAL NO. 2	EACH	1
X7010216	TRAFFIC CONTROL AND PROTECTION, (SPECIAL)	LSUM	1
70300100	SHORT-TERM PAVEMENT MARKING REMOVAL	FOOT	116
XX005431	LOCATING UNDERGROUND UTILITY	EACH	4
XX006119	TRAFFIC CONTROL AND PROTECTION (DETOUR)	LSUM	1

△ SPECIALTY ITEMS

**THOUVENOT, WADE & MOERCHEN, INC.**  
ENGINEERS ♦ SURVEYORS ♦ PLANNERS



- CORPORATE OFFICE**  
4940 OLD COLLINSVILLE RD.  
SWANSEA, ILLINOIS 62226  
TEL (618) 624-4488  
FAX (618) 624-6688
- WATERLOO OFFICE**  
113 SOUTH MAIN STREET  
WATERLOO, ILLINOIS 62298  
TEL (618) 939-5050  
FAX (618) 939-3938
- EDWARDSVILLE OFFICE**  
600 COUNTRY CLUB VIEW, SUITE 1  
EDWARDSVILLE, ILLINOIS 62025  
TEL (618) 656-4040  
FAX (618) 656-4343
- ST. LOUIS OFFICE**  
720 OLIVE ST., SUITE 200A  
ST. LOUIS, MISSOURI 63101  
TEL (314) 241-6300  
FAX (314) 241-2391
- ST. CHARLES OFFICE**  
400 N. 5TH STREET, SUITE 101  
ST. CHARLES, MISSOURI 63301  
TEL (636) 724-8300  
FAX (636) 724-8304

PROFESSIONAL REGISTRATIONS	LICENSE NO.
ILLINOIS PROFESSIONAL DESIGN FIRM	184-001220
PROFESSIONAL ENGINEERING CORP.	62-035370
PROFESSIONAL STRUCTURAL ENGR. CORP.	81-005202
ILLINOIS PROF. LAND SURVEYING CORP.	048-000029
MISSOURI PROFESSIONAL ENGR. CORP.	MC 001528
MISSOURI LAND SURVEYING CORP.	MC 000345

SEAL

Signature: \_\_\_\_\_  
Signature Date: \_\_\_\_\_  
Expiration Date: \_\_\_\_\_

**STATEMENT OF RESPONSIBILITY**  
I hereby confirm that the document herein to be submitted by my seal is related to the sheet, and I hereby disclaim any responsibility for all other drawings, specifications, estimates, reports or other documents or instruments relating to or intended to be utilized for any other part of the architectural, engineering or survey project.

**TITLE**  
PORTER RD.  
SUMMARY OF QUANTITIES  
14-00061-00-PW

**PROJECT**  
PORTER RD. RECONSTRUCTION  
CITY OF FALLON  
ST. CLAIR COUNTY  
ILLINOIS

REV.	DATE	DESCRIPTION
△	5/29/17	REVISIONS TO QUANTITIES
△		
△		

DRAWN BY: COK	SHEET: 3
DESIGNED BY: NTS	OF 28 SHEETS
CHECKED BY: NTS	
APPROVED BY: NTS	
PROJECT NUMBER: T25140517	PROJECT: PORTER RD. RECONSTRUCTION
<input checked="" type="checkbox"/> ISSUED FOR REVIEW	<input type="checkbox"/> ISSUED FOR BIDDING
<input type="checkbox"/> ISSUED FOR CONSTR.	<input type="checkbox"/> RECORDED DRAWING

THOUVENOT, WADE & MOERCHEN, INC. ENGINEERS SURVEYORS PLANNERS



- CORPORATE OFFICE 4940 OLD COLLINSVILLE RD. SWANSEA, ILLINOIS 62226... WATERLOO OFFICE 113 SOUTH MAIN STREET WATERLOO, ILLINOIS 62298... EDWARDSVILLE OFFICE 600 COUNTRY CLUB VIEW, SUITE 1 EDWARDSVILLE, ILLINOIS 62025... ST. LOUIS OFFICE 720 OLIVE ST., SUITE 200A ST. LOUIS, MISSOURI 63101... ST. CHARLES OFFICE 400 N. 5TH STREET, SUITE 101 ST. CHARLES, MISSOURI 63301

PROFESSIONAL REGISTRATION LICENSE NO. ILLINOIS PROFESSIONAL DESIGN FIRM 184-001220... MISSOURI PROFESSIONAL ENGR. CORP. MC 001528

STATEMENT OF RESPONSIBILITY I hereby confirm that the document herein to be submittted by me and is restricted to this sheet, and I hereby disclaim any responsibility for all other drawings, specifications, estimates, reports or other documents or instruments relating to or intended to be utilized for any other part of the architectural, engineering or survey project.

EROSION CONTROL AND SEEDING SCHEDULE table with columns: FROM LOCATION STATION, TO LOCATION STATION, TEMPORARY EROSION CONTROL SEEDING (LBS), PERIMETER EROSION BARRIER (FOOT), INLET & PIPE PROTECTION (EACH), SEEDING CLASS 1A (ACRES), NITROGEN FERTILIZER NUTRIENT (LBS), PHOSPHOROUS FERTILIZER NUTRIENT (LBS), POTASSIUM FERTILIZER NUTRIENT (LBS), MULCH METHOD 2 (ACRES)

EARTHWORK SCHEDULE table with columns: FROM LOCATION STATION, TO LOCATION STATION, EARTH EXCAVATION (CY), EMBANKMENT (CY), EARTH EXCAVATION ADJUSTED FOR 25% SHRINKAGE (CY), BALANCE WASTE (+) SHORTAGE (-) (CY)

VALUES BASED ON CALCULATIONS SHOWN ON SHEET 26. ASSUMED EXISTING PAVEMENT THICKNESS=8"

STORM SEWER AND DRAINAGE STRUCTURES table with columns: FROM LOCATION STATION, TO LOCATION STATION, STORM SEWERS CLASS A TYPE 1 - 12" (FOOT), STORM SEWERS CLASS A TYPE 1 - 15" (FOOT), STORM SEWERS CLASS A TYPE 1 - 18" (FOOT), STORM SEWERS CLASS A TYPE 1 - 21" (FOOT), INLET SPECIAL No. 1 (EACH), INLET TYPE 'A' INLET W/ T-8 GRATE (EACH), INLET SPECIAL No. 2 (EACH), INLET MODIFICATION (EACH), TRENCH BACKFILL (CY)

REMOVAL SCHEDULE table with columns: FROM LOCATION STATION, TO LOCATION STATION, PAVEMENT REMOVAL (SQ YD), DRIVEWAY PAVEMENT REMOVAL (SQ YD), REMOVE EXISTING F.E.S. (EACH), STORM SEWER REMOVAL (FOOT), PIPE CULVERT REMOVAL (LF), CURB AND GUTTER REMOVAL (LF)

ENTRANCE AND SIDEROAD SCHEDULE table with columns: LOCATION STATION, ENTRANCE TYPE, 'L' ADJUSTMENT LENGTH OF DRIVE BEHIND ENTRANCE APRON (FEET), AGGREGATE BASE COURSE TYPE B - 8" (SQ YD), AGGREGATE FOR TEMPORARY ACCESS (TON), AGGREGATE SURFACE COURSE TYPE A 6" (SQ YD), INCIDENTAL HOT-MIX ASPHALT SURFACING (TON), PORTLAND CEMENT CONCRETE DRIVEWAY PAVEMENT 6" (SQ YD), PORTLAND CEMENT CONCRETE PAVEMENT 8" (SQ YD)

PAVING SCHEDULE table with columns: FROM LOCATION STATION, TO LOCATION STATION, PROCESSING MODIFIED SOILS 12" (SQ YD), LIME (TON), HOTMIX ASPHALT BINDER COURSE IL-19.0, N 70 (TON), HOTMIX ASPHALT SURFACE COURSE MIX "C", N 70 (TON), BITUMINOUS MATERIALS (PRIME COAT) (LB), COMBINATION CONCRETE CURB & GUTTER TYPE B-6.24 (FOOT)

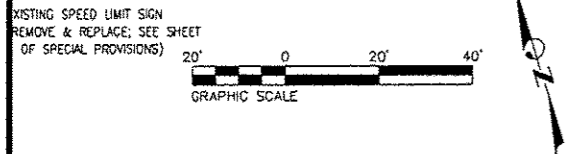
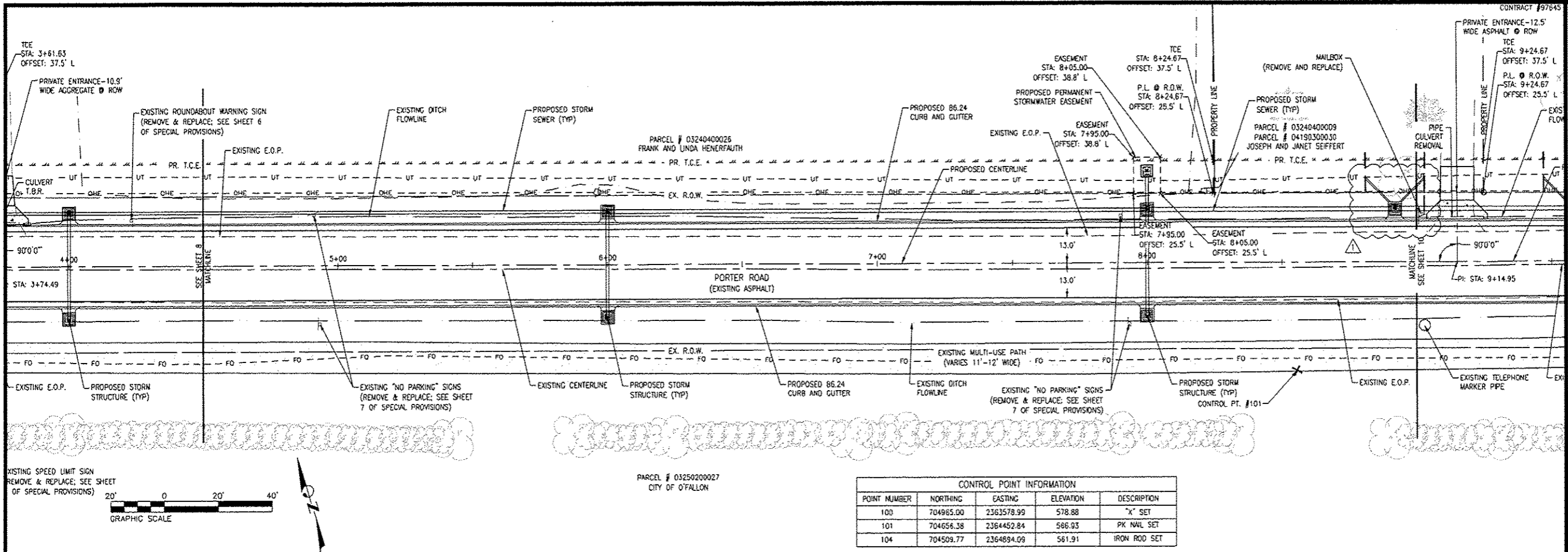
PAVEMENT MARKING SCHEDULE & POTHOLING table with columns: FROM LOCATION STATION, TO LOCATION STATION, TYPE, THERMOPLASTIC PAVEMENT MARKING - LINE 4" (FOOT), TEMPORARY PAVEMENT MARKING - LINE 4" (FOOT), LOCATING UNDERGROUND UTILITY (EACH), SHORT TERM PAVEMENT MARKING (FOOT), SHORT TERM PAVEMENT REMOVAL (FOOT)

PORTER RD. RECONSTRUCTION SCHEDULES 14-00061-00-PW PROJECT: PORTER RD. RECONSTRUCTION CITY OF FALLON ST. CLAIR COUNTY ILLINOIS

REVISIONS table with columns: REV, DATE, DESCRIPTION

DRWN: BY CDK SHEET 7 OF 26 SHEETS DESIGNED BY NTS CHECKED BY NTS APPROVED BY NTS PROJECT NUMBER 125140517 PORTER RD. RECONSTRUCTION

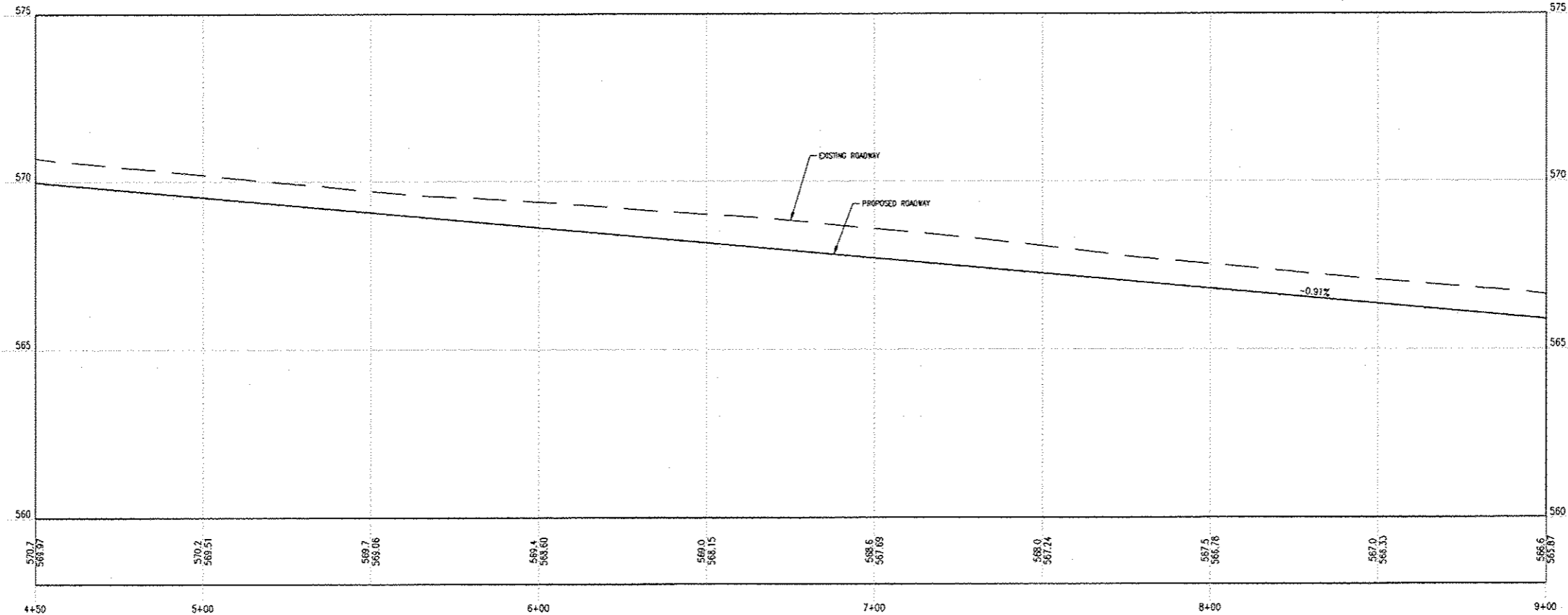
- ISSUED FOR REVIEW ISSUED FOR BIDDING ISSUED FOR CONSTR. RECORD DRAWINGS



PARCEL # 0325020027  
CITY OF FALLON

CONTROL POINT INFORMATION				
POINT NUMBER	NORTHING	EASTING	ELEVATION	DESCRIPTION
100	704985.00	2363578.99	578.88	"X" SET
101	704656.38	2364452.84	568.93	PK NAIL SET
104	704509.77	2364894.09	581.91	IRON ROD SET

ALIGNMENT - PORTER ROAD CENTERLINE (4+50.00 - 9+00.00)



**THOUVENOT, WADE & MOERCHEN, INC.**  
ENGINEERS • SURVEYORS • PLANNERS



- CORPORATE OFFICE**  
4940 OLD COLLINSVILLE RD.  
SWANSEA, ILLINOIS 62226  
TEL (618) 624-4489  
FAX (618) 624-6686
- WATERLOO OFFICE**  
113 SOUTH MAIN STREET  
WATERLOO, ILLINOIS 62298  
TEL (618) 939-5050  
FAX (618) 939-3938
- EDWARDSVILLE OFFICE**  
600 COUNTRY CLUB VIEW, SUITE 1  
EDWARDSVILLE, ILLINOIS 62025  
TEL (618) 656-4040  
FAX (618) 656-4343
- ST. LOUIS OFFICE**  
720 OLIVE ST., SUITE 200A  
ST. LOUIS, MISSOURI 63101  
TEL (314) 241-6300  
FAX (314) 241-2391
- ST. CHARLES OFFICE**  
400 N. 5TH STREET, SUITE 101  
ST. CHARLES, MISSOURI 63301  
TEL (636) 724-8300  
FAX (636) 724-8304

**PROFESSIONAL REGISTRATIONS**

ILLINOIS PROFESSIONAL DESIGN FIRM	184-001220
PROFESSIONAL ENGINEERING CORP.	62-033370
PROFESSIONAL STRUCTURAL ENGR. CORP.	81-065202
ILLINOIS PROF. LAND SURVEYING CORP.	048-000029
MISSOURI PROFESSIONAL ENGR. CORP.	MC 001528
MISSOURI LAND SURVEYING CORP.	MC 000346

SEAL

Signature: \_\_\_\_\_  
Signature Date: \_\_\_\_\_  
Expiration Date: \_\_\_\_\_

**STATEMENT OF RESPONSIBILITY**  
I hereby confirm that the document herein to be authorized by my seal is restricted to this sheet, and I hereby disclaim any responsibility for all other drawings, specifications, estimates, reports or other documents or instruments relating to or intended to be utilized for any other part of the architectural, engineering or survey project.

TITLE: **PORTER RD. PLAN AND PROFILE**  
PROJECT: **PORTER RD. RECONSTRUCTION CITY OF FALLON ST. CLAIR COUNTY ILLINOIS**

REV	DATE	DESCRIPTION
▲	5/23/17	STORM SEWER REVISIONS
▲		
▲		

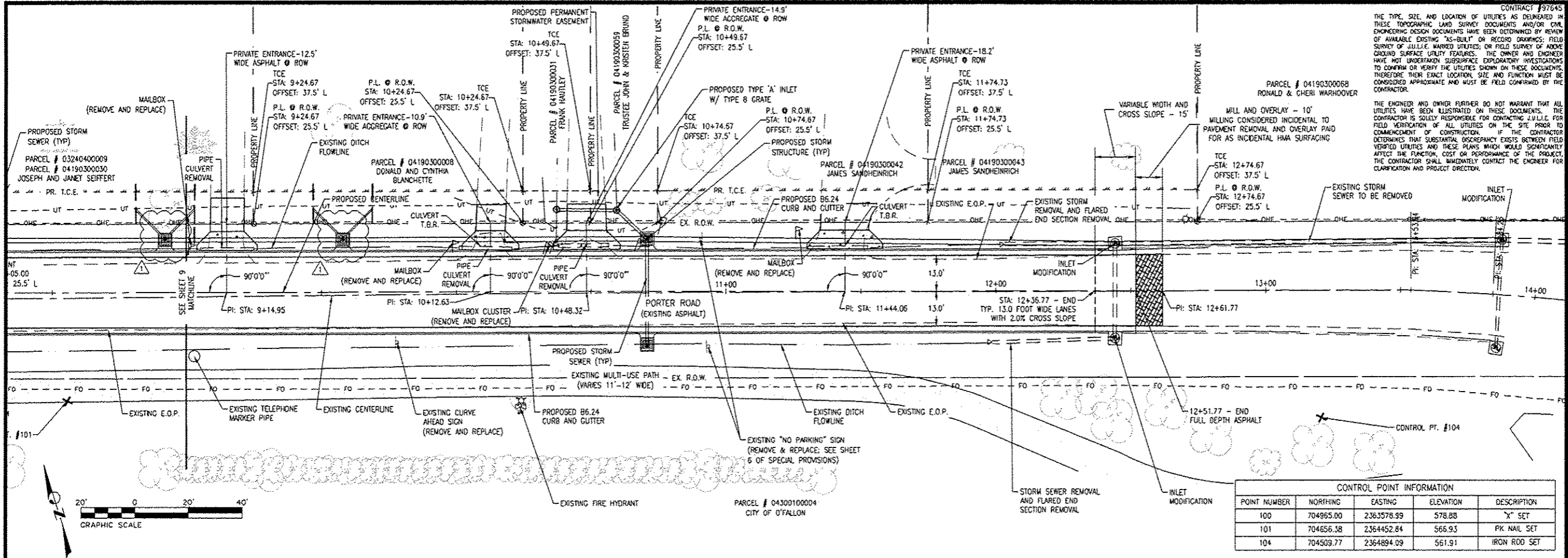
DRAWN BY: CDK  
DESIGNED BY: NTS  
CHECKED BY: NTS  
APPROVED BY: NTS

SHEET: **9**  
OF 26 SHEETS

PROJECT: PORTER RD. RECONSTRUCTION  
PROJECT NUMBER: T25140517

ISSUED FOR REVIEW     ISSUED FOR BIDDING  
 ISSUED FOR CONSTR.     RECORD DRAWING

C:\Users\moerchen\Documents\Projects\140517\140517-Base-PROP.dwg



CONTRACT #97645  
THE TYPE, SIZE, AND LOCATION OF UTILITIES AS DELINEATED IN THESE TOPOGRAPHIC AND SURVEY DOCUMENTS AND/OR CIVIL ENGINEERING DESIGN DOCUMENTS HAVE BEEN DETERMINED BY REVIEW OF AVAILABLE EXISTING "AS-BUILT" OR RECORD DRAWINGS; FIELD SURVEY OF J.U.L.I.E. MARKED UTILITIES; OR FIELD SURVEY OF ABOVE GROUND SURFACE UTILITY FEATURES. THE OWNER AND ENGINEER HAVE NOT UNDERTAKEN SUBSURFACE EXPLORATORY INVESTIGATIONS TO CONFIRM OR VERIFY THE UTILITIES SHOWN ON THESE DOCUMENTS. THEREFORE THEIR EXACT LOCATION, SIZE AND FUNCTION MUST BE CONSIDERED APPROXIMATE AND MUST BE FIELD CONFIRMED BY THE CONTRACTOR.

THOUVENOT, WADE & MOERCHEN, INC.  
ENGINEERS • SURVEYORS • PLANNERS

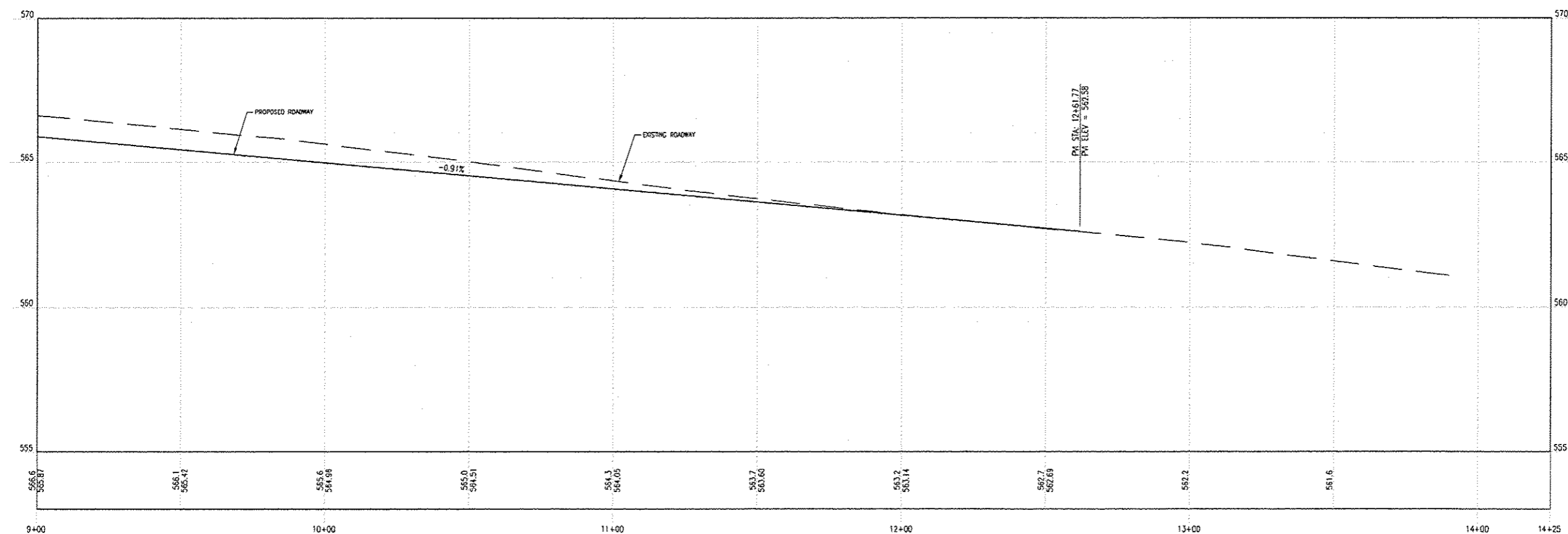


- CORPORATE OFFICE  
4940 OLD COLLINSVILLE RD.  
SWANSEA, ILLINOIS 62226  
TEL (618) 624-4408  
FAX (618) 624-6688
- WATERLOO OFFICE  
113 SOUTH MAIN STREET  
WATERLOO, ILLINOIS 62298  
TEL (618) 939-5050  
FAX (618) 939-3938
- EDWARDSVILLE OFFICE  
600 COUNTRY CLUB VIEW SUITE 1  
EDWARDSVILLE, ILLINOIS 62025  
TEL (618) 656-4040  
FAX (618) 656-4343
- ST. LOUIS OFFICE  
720 OLIVE ST., SUITE 200A  
ST. LOUIS, MISSOURI 63101  
TEL (314) 241-6300  
FAX (314) 241-2391
- ST. CHARLES OFFICE  
400 N. 5TH STREET, SUITE 101  
ST. CHARLES, MISSOURI 63301  
TEL (636) 724-8300  
FAX (636) 724-8304

PROFESSIONAL REGISTRATIONS  
ILLINOIS PROFESSIONAL DESIGN FIRM 184-001220  
PROFESSIONAL ENGINEERING CORP. 62-035370  
PROFESSIONAL STRUCTURAL ENGR. CORP. 81-005202  
ILLINOIS PROF. LAND SURVEYING CORP. 048-000029  
MISSOURI PROFESSIONAL ENGR. CORP. MO 001528  
MISSOURI LAND SURVEYING CORP. MO 000346

POINT NUMBER	NORTHING	EASTING	ELEVATION	DESCRIPTION
100	704865.00	2363578.99	578.88	"X" SET
101	704656.38	2364452.84	566.93	PK NAIL SET
104	704509.77	2364894.09	561.91	IRON ROD SET

ALIGNMENT - PORTER ROAD CENTERLINE (9+00.00 - 14+25.00)



Signature: \_\_\_\_\_  
Signature Date: \_\_\_\_\_  
Expiration Date: \_\_\_\_\_

STATEMENT OF RESPONSIBILITY  
I hereby confirm that the document herein to be disseminated by my seal is restricted to this sheet, and I hereby disclaim any responsibility for all other drawings, specifications, estimates, reports or other documents or instruments relating to or intended to be utilized for any other part of the architectural, engineering or survey project.

TITLE  
PORTER RD. RECONSTRUCTION PLAN AND PROFILE 14-00061-00-PW

PROJECT  
PORTER RD. RECONSTRUCTION CITY OF O'FALLON ST. CLAIR COUNTY ILLINOIS

REV	DATE	DESCRIPTION
1	5/29/17	STORM SEWER REVISIONS
2		
3		

DRAWN BY: CDK  
DESIGNED BY: NTS  
CHECKED BY: NTS  
APPROVED BY: NTS  
PROJECT NUMBER: T25140517  
SHEET: 10 OF 26 SHEETS  
PORTER RD. RECONSTRUCTION

ISSUED FOR REVIEW  ISSUED FOR BIDDING  
 ISSUED FOR CONSTR.  RECORD DRAWING

C:\Users\jmoerchen\Documents\Projects\14-00061-00-PW\14-00061-00-PW.dwg 7/20/17 10:51:17 AM 5/29/17 10:51:17 AM 5/29/17 10:51:17 AM

THOUVENOT, WADE & MOERCHEN, INC. ENGINEERS SURVEYORS PLANNERS



- CORPORATE OFFICE  
4940 OLD COLLINSVILLE RD.  
SWANSEA, ILLINOIS 62226  
TEL (618) 624-4489  
FAX (618) 624-6688
- WATERLOO OFFICE  
113 SOUTH MAIN STREET  
WATERLOO, ILLINOIS 62298  
TEL (618) 939-5050  
FAX (618) 939-3938
- EDWARDSVILLE OFFICE  
600 COUNTRY CLUB VIEW, SUITE 1  
EDWARDSVILLE, ILLINOIS 62025  
TEL (618) 656-4040  
FAX (618) 656-4343
- ST. LOUIS OFFICE  
720 OLIVE ST., SUITE 200A  
ST. LOUIS, MISSOURI 63101  
TEL (314) 241-6300  
FAX (314) 241-2391
- ST. CHARLES OFFICE  
400 N. 5TH STREET, SUITE 101  
ST. CHARLES, MISSOURI 63301  
TEL (636) 724-8300  
FAX (636) 724-8304

PROFESSIONAL REGISTRATIONS LICENSE NO.  
ILLINOIS PROFESSIONAL DESIGN FIRM 184-001220  
PROFESSIONAL ENGINEERING CORP. 62-035370  
PROFESSIONAL STRUCTURAL ENGR. CORP. 81-005202  
ILLINOIS PROF. LAND SURVEYING CORP. 048-000223  
MISSOURI PROFESSIONAL ENGR. CORP. MC 001528  
MISSOURI LAND SURVEYING CORP. MC 000348

SEAL

Signature: \_\_\_\_\_  
Signature Date: \_\_\_\_\_  
Expiration Date: \_\_\_\_\_

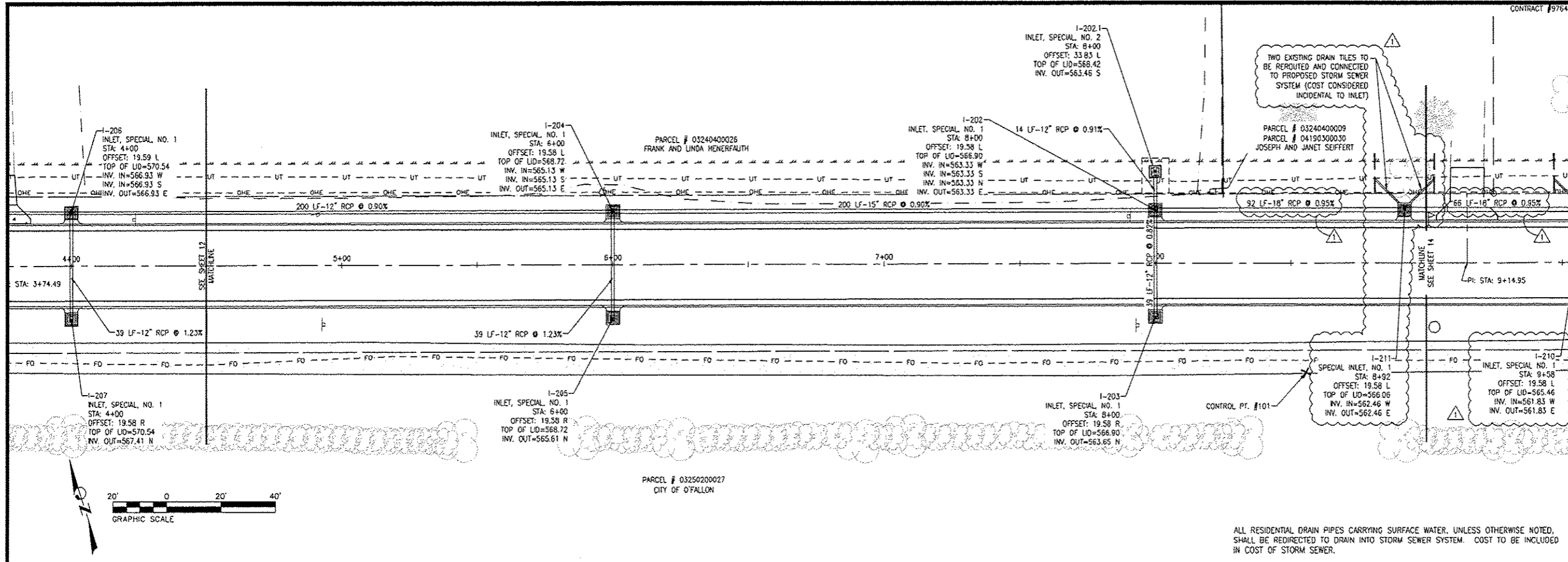
STATEMENT OF RESPONSIBILITY  
I hereby confirm that the document herein to be authorized by my seal is restricted to this sheet, and I hereby disclaim any responsibility for all other drawings, specifications, estimates, reports or other documents or instruments relating to or intended to be utilized for any other part of the architectural, engineering or survey project.

TITLE  
**PORTER RD. DRAINAGE**  
14-00061-00-PW

PROJECT  
**PORTER RD. RECONSTRUCTION**  
CITY OF FALLON  
ST. CLAIR COUNTY  
ILLINOIS

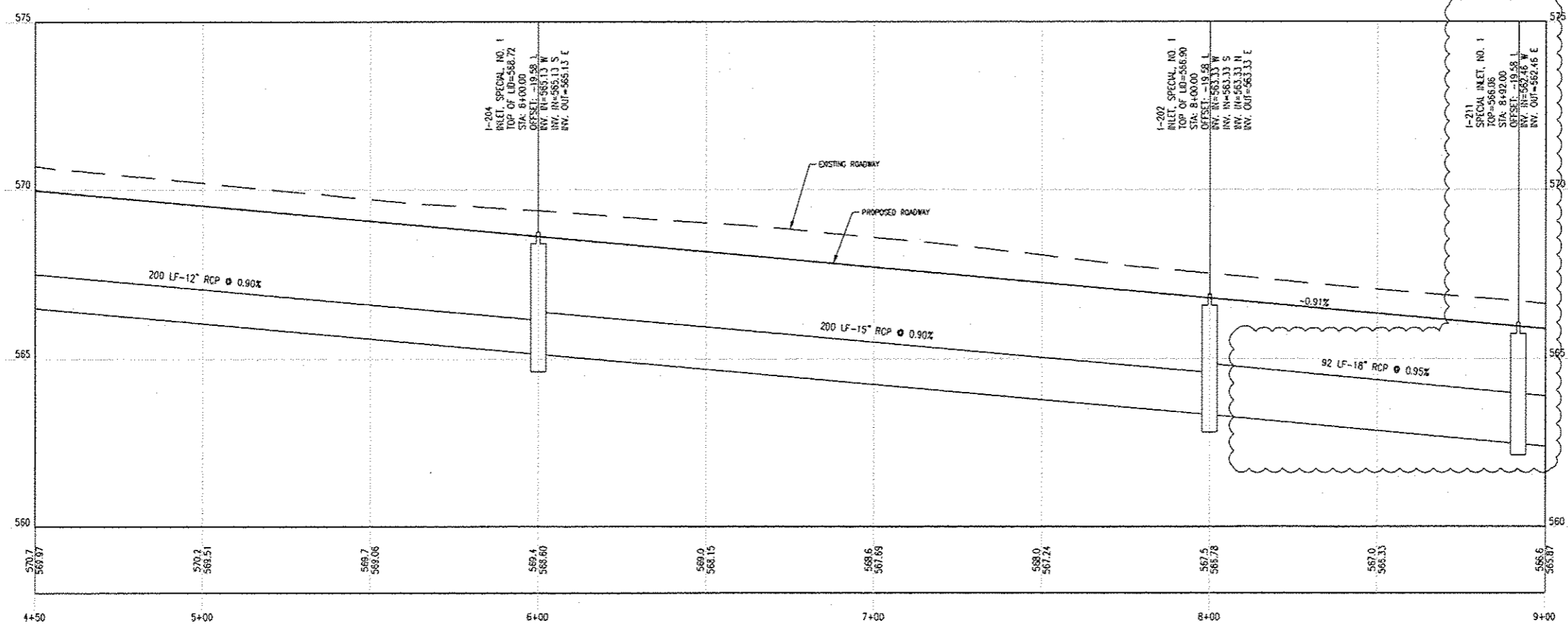
REV	DATE	DESCRIPTION
▲	5/29/17	STORM SEWER REVISIONS
▲		
▲		

DRAWN BY	CDK	SHEET
DESIGNED BY	NTS	<b>13</b>
CHECKED BY	NTS	OF 26 SHEETS
APPROVED BY	NTS	PORTER RD. RECONSTRUCTION
PROJECT NUMBER	T25140517	
<input checked="" type="checkbox"/> ISSUED FOR REVIEW	<input type="checkbox"/> ISSUED FOR BIDDING	
<input type="checkbox"/> ISSUED FOR CONST.	<input type="checkbox"/> RECORD DRAWING	



ALL RESIDENTIAL DRAIN PIPES CARRYING SURFACE WATER, UNLESS OTHERWISE NOTED, SHALL BE REDIRECTED TO DRAIN INTO STORM SEWER SYSTEM. COST TO BE INCLUDED IN COST OF STORM SEWER.

ALIGNMENT - PORTER ROAD CENTERLINE (4+50.00 - 9+00.00)



C:\Users\jmoore\Documents\Projects\Porter Rd\140517-BASE-PROJ.dwg

THOUVENOT, WADE & MOERCHEN, INC. ENGINEERS SURVEYORS PLANNERS



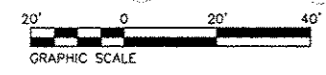
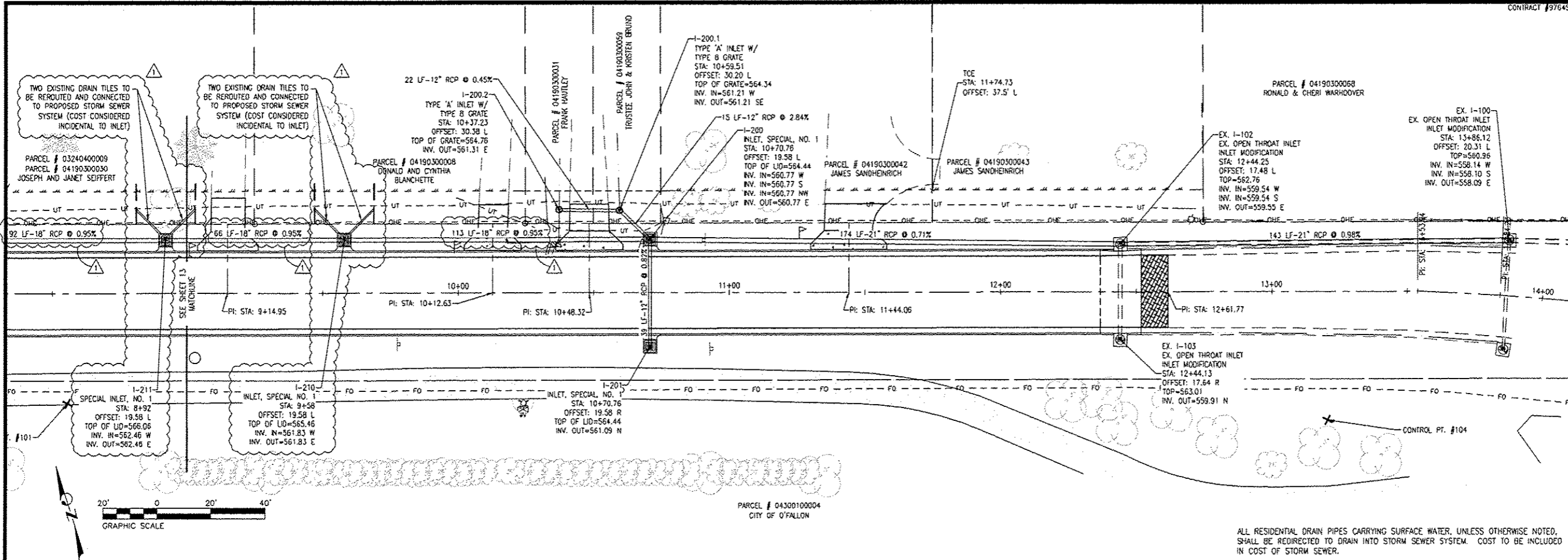
- CORPORATE OFFICE  
4940 OLD COLLINSVILLE RD.  
SWANSEA, ILLINOIS 62226  
TEL (618) 624-4488  
FAX (618) 624-6688
- WATERLOO OFFICE  
115 SOUTH MAIN STREET  
WATERLOO, ILLINOIS 62298  
TEL (618) 939-5050  
FAX (618) 939-3338
- EDWARDSVILLE OFFICE  
600 COUNTRY CLUB VIEW, SUITE 1  
EDWARDSVILLE, ILLINOIS 62025  
TEL (618) 656-4040  
FAX (618) 656-4343
- ST. LOUIS OFFICE  
720 OLIVE ST., SUITE 200A  
ST. LOUIS, MISSOURI 63101  
TEL (314) 241-6300  
FAX (314) 241-2391
- ST. CHARLES OFFICE  
400 N. 5TH STREET, SUITE 101  
ST. CHARLES, MISSOURI 63301  
TEL (636) 724-8300  
FAX (636) 724-8304

PROFESSIONAL REGISTRATIONS	LICENSE NO.
ILLINOIS PROFESSIONAL DESIGN FIRM	184-001220
PROFESSIONAL ENGINEERING CORP.	62-035370
PROFESSIONAL STRUCTURAL ENGR. CORP.	81-005022
ILLINOIS PROF. LAND SURVEYING CORP.	048-000229
MISSOURI PROFESSIONAL ENGR. CORP.	MC 001528
MISSOURI LAND SURVEYING CORP.	MC 000346

SEAL

Signature: \_\_\_\_\_  
Signature Date: \_\_\_\_\_  
Expiration Date: \_\_\_\_\_

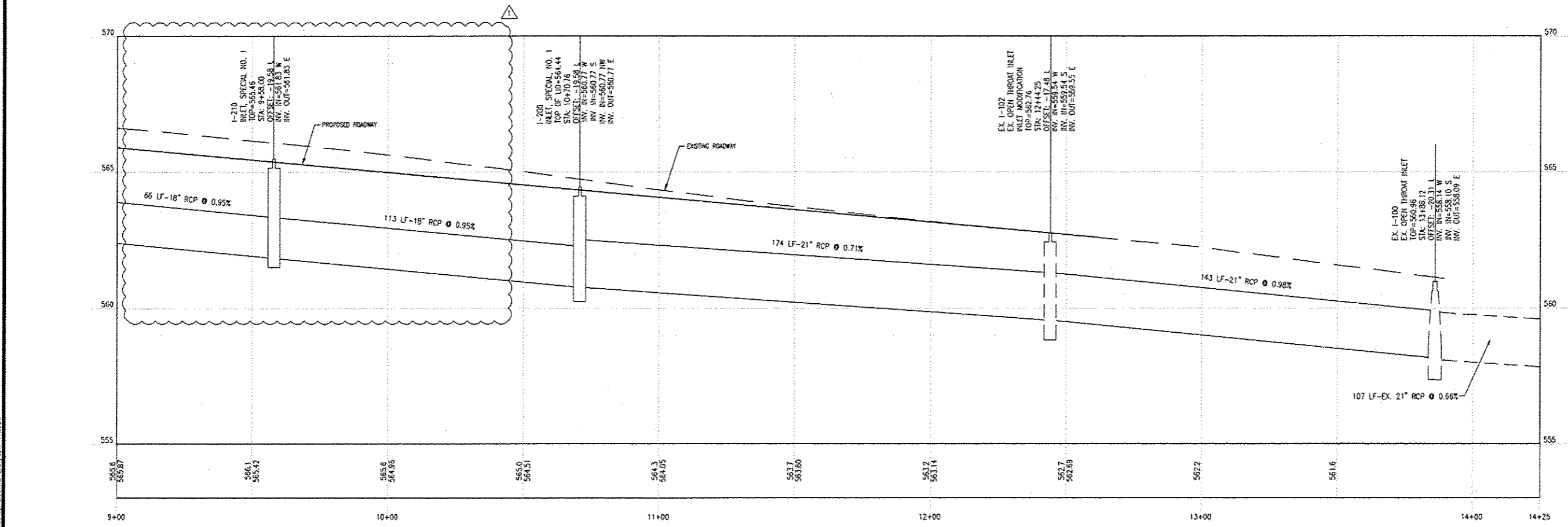
**STATEMENT OF RESPONSIBILITY**  
I hereby confirm that the document herein to be authorized by my seal is restricted to this sheet, and I hereby disclaim any responsibility for all other drawings, specifications, estimates, reports or other documents or instruments relating to or intended to be utilized for any other part of the architectural, engineering or survey project.



PARCEL # 04300100004 CITY OF O'FALLON

ALL RESIDENTIAL DRAIN PIPES CARRYING SURFACE WATER, UNLESS OTHERWISE NOTED, SHALL BE REDIRECTED TO DRAIN INTO STORM SEWER SYSTEM. COST TO BE INCLUDED IN COST OF STORM SEWER.

ALIGNMENT - PORTER ROAD CENTERLINE (9+00.00 - 14+25.00)



TITLE: PORTER RD. DRAINAGE RECONSTRUCTION 14-00061-00-PW

PROJECT: PORTER RD. RECONSTRUCTION CITY OF O'FALLON ST. CLAIR COUNTY ILLINOIS

REV	DATE	DESCRIPTION
△	5/29/17	STORM SEWER REVISIONS
△		
△		

DRAWN BY: CDK	SHEET: 14
DESIGNED BY: NTS	OF 26 SHEETS
CHECKED BY: NTS	
APPROVED BY: NTS	PROJECT: PORTER RD. RECONSTRUCTION
PROJECT NUMBER: T25140517	
<input checked="" type="checkbox"/> ISSUED FOR REVIEW	<input type="checkbox"/> ISSUED FOR BIDDING
<input type="checkbox"/> ISSUED FOR CONSTR.	<input type="checkbox"/> RECORD DRAWING

THOUVENOT, WADE & MOERCHEN, INC.  
ENGINEERS • SURVEYORS • PLANNERS



- CORPORATE OFFICE  
4940 OLD COLLINSVILLE RD.  
SHANSEA, ILLINOIS 62226  
TEL (618) 624-4489  
FAX (618) 624-8688
- WATERLOO OFFICE  
113 SOUTH MAIN STREET  
WATERLOO, ILLINOIS 62298  
TEL (618) 939-5050  
FAX (618) 939-3938
- EDWARDSVILLE OFFICE  
600 COUNTRY CLUB VIEW, SUITE 1  
EDWARDSVILLE, ILLINOIS 62025  
TEL (618) 656-4040  
FAX (618) 656-4343
- ST. LOUIS OFFICE  
720 OLIVE ST., SUITE 200A  
ST. LOUIS, MISSOURI 63101  
TEL (314) 241-6300  
FAX (314) 241-2391
- ST. CHARLES OFFICE  
400 N. 5TH STREET, SUITE 101  
ST. CHARLES, MISSOURI 63301  
TEL (636) 724-8300  
FAX (636) 724-8304

PROFESSIONAL REGISTRATION  
ILLINOIS PROFESSIONAL DESIGN FIRM 184-081220  
PROFESSIONAL ENGINEERING CORP. 62-035370  
PROFESSIONAL STRUCTURAL ENGR. CORP. 81-005202  
ILLINOIS PROF. LAND SURVEYING CORP. 048-000029  
MISSOURI PROFESSIONAL ENGR. CORP. MC 001528  
MISSOURI LAND SURVEYING CORP. MC 000346

SEAL  
Signature: \_\_\_\_\_  
Signature Date: \_\_\_\_\_  
Expiration Date: \_\_\_\_\_

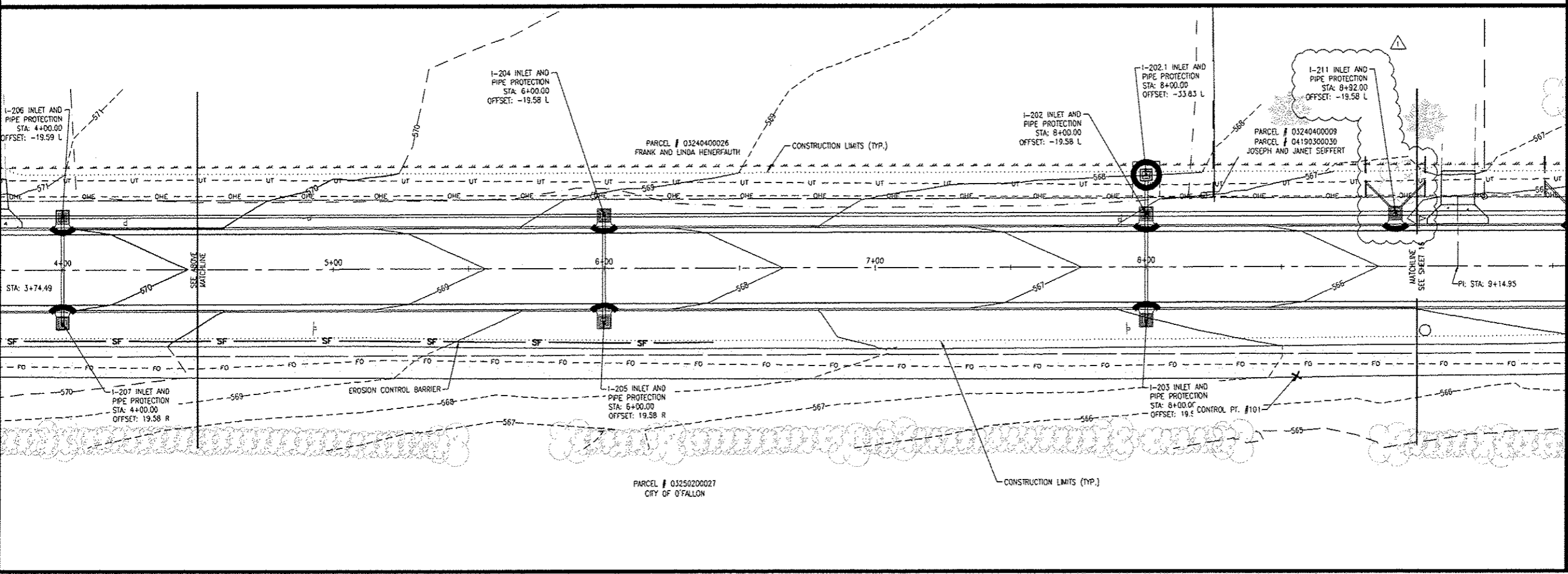
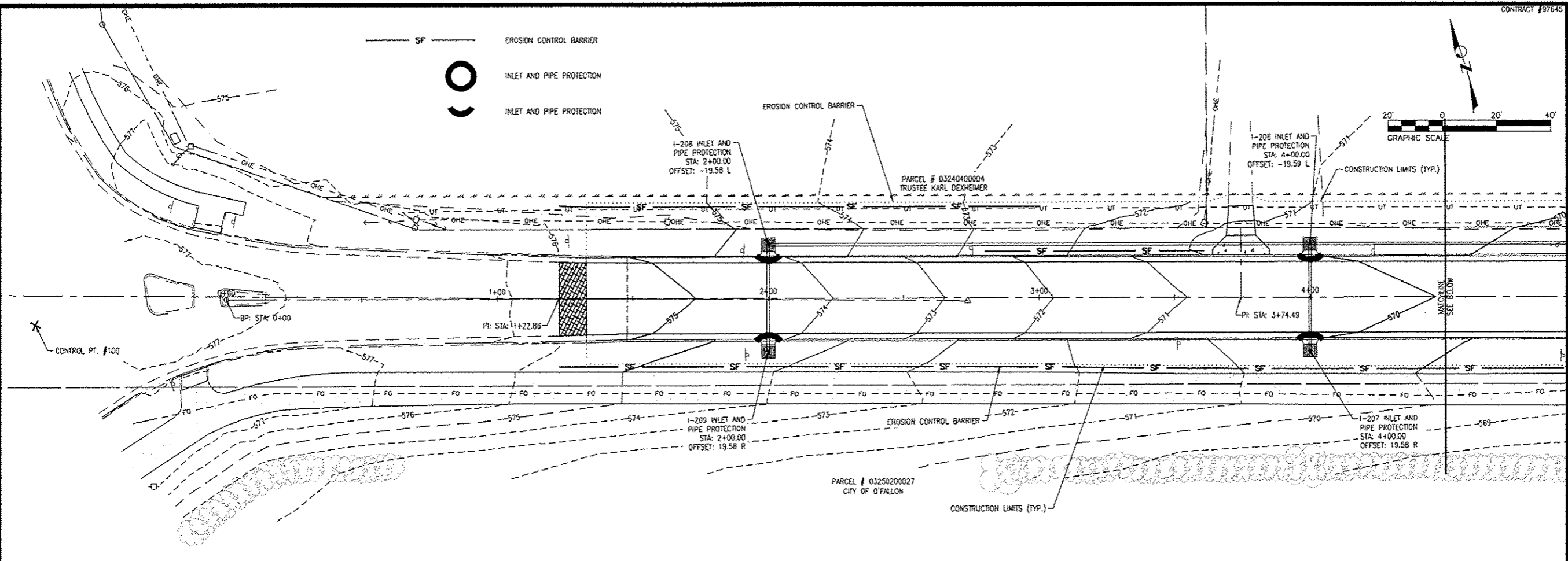
STATEMENT OF RESPONSIBILITY  
I hereby confirm that the document herein to be authorized by my seal is restricted to this sheet, and I hereby disclaim any responsibility for all other drawings, specifications, estimates, reports or other documents or instruments relating to or intended to be utilized for any other part of the architectural, engineering or survey project.

TITLE  
PORTER RD.  
EROSION CONTROL PLAN  
14-00061-00-PW

PROJECT  
PORTER RD. RECONSTRUCTION  
CITY OF FALLON  
ST. CLAIR COUNTY  
ILLINOIS

REV	DATE	DESCRIPTION
▲	5/29/17	ADDITIONAL INLET PROTECTION
▲		
▲		

DRAWN BY: COK	SHEET: 15
DESIGNED BY: NTS	OF 26 SHEETS
CHECKED BY: NTS	
APPROVED BY: NTS	
PROJECT NUMBER: T25140517	PROJECT: PORTER RD. RECONSTRUCTION
<input checked="" type="checkbox"/> ISSUED FOR REVIEW	<input type="checkbox"/> ISSUED FOR BIDDING
<input type="checkbox"/> ISSUED FOR CONSTR.	<input type="checkbox"/> RECORD DRAWING



City of O'Fallon, Illinois  
 2001 V. 160317 - BASE - PROP 4x9  
 2001 V. 160317 - BASE - PROP 4x9  
 2001 V. 160317 - BASE - PROP 4x9



CONTRACT #97645

THOUVENOT, WADE & MOERCHEN, INC.  
ENGINEERS SURVEYORS PLANNERS



- CORPORATE OFFICE  
4940 OLD COLLINSVILLE RD.  
SHAWNEE, ILLINOIS 62226  
TEL (618) 624-4488  
FAX (618) 624-6888
- WATERLOO OFFICE  
113 SOUTH MAIN STREET  
WATERLOO, ILLINOIS 62298  
TEL (618) 939-5050  
FAX (618) 939-3936
- EDWARDSVILLE OFFICE  
600 COUNTRY CLUB VIEW, SUITE 1  
EDWARDSVILLE, ILLINOIS 62025  
TEL (618) 656-4040  
FAX (618) 656-4343
- ST. LOUIS OFFICE  
720 OLIVE ST., SUITE 200A  
ST. LOUIS, MISSOURI 63101  
TEL (314) 241-6300  
FAX (314) 241-2391
- ST. CHARLES OFFICE  
400 N. 5TH STREET, SUITE 101  
ST. CHARLES, MISSOURI 63301  
TEL (636) 724-8300  
FAX (636) 724-8304

PROFESSIONAL REGISTRATIONS	LICENSE NO.
ILLINOIS PROFESSIONAL DESIGN FIRM	104-001220
PROFESSIONAL ENGINEERING CORP.	62-055370
PROFESSIONAL STRUCTURAL ENGR. CORP.	81-005202
ILLINOIS PROF. LAND SURVEYING CORP.	048-000029
MISSOURI PROFESSIONAL ENGR. CORP.	MC 001528
MISSOURI LAND SURVEYING CORP.	MC 000346

SEAL

Signature: \_\_\_\_\_  
Signature Date: \_\_\_\_\_  
Expiration Date: \_\_\_\_\_

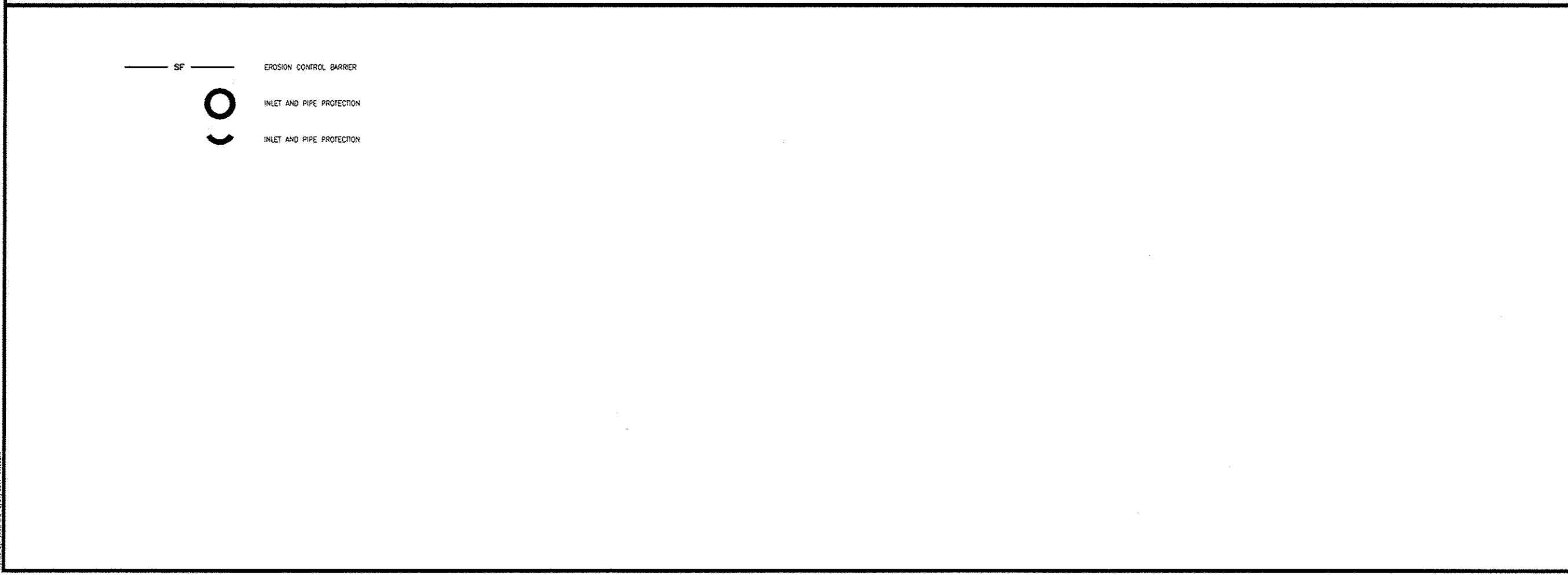
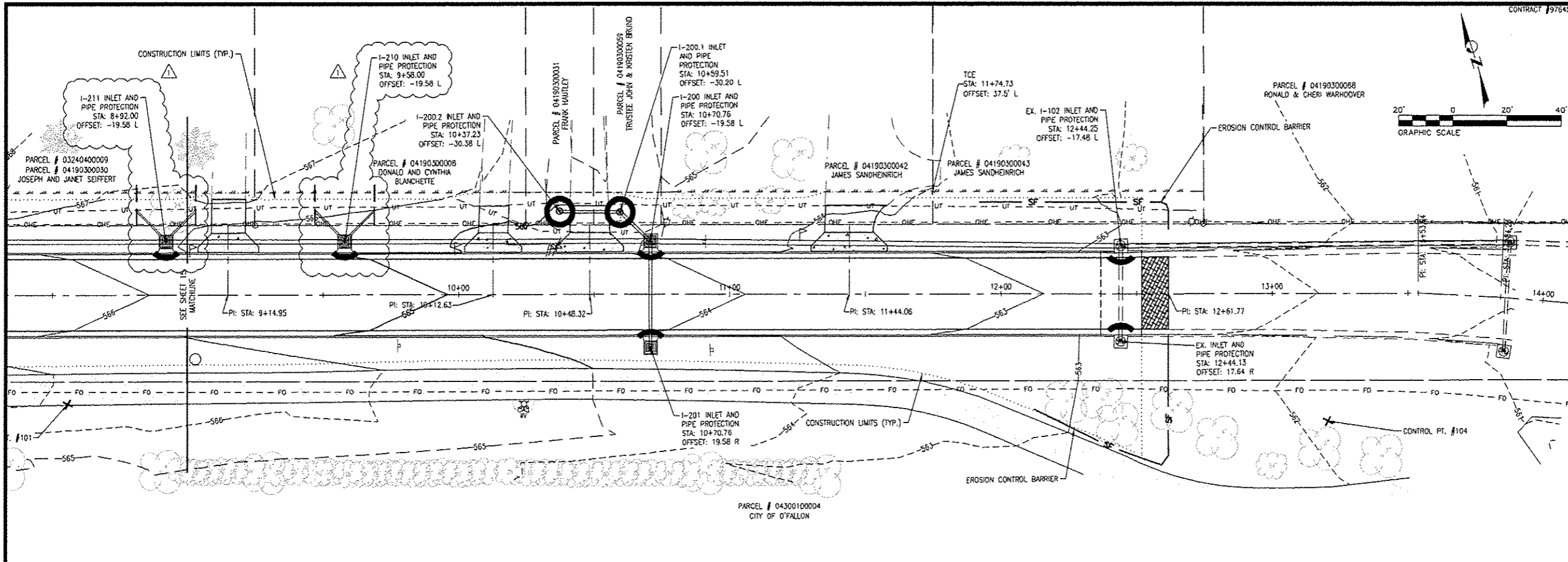
**STATEMENT OF RESPONSIBILITY**  
I hereby confirm that the document herein to be authorized by my seal is restricted to this sheet, and I hereby disclaim any responsibility for all other drawings, specifications, estimates, reports or other documents or instruments relating to or intended to be utilized for any other part of the architectural, engineering or survey project.

TITLE: PORTER RD. EROSION CONTROL PLAN  
14-00061-00-PW

PROJECT: PORTER RD. RECONSTRUCTION  
CITY OF OF-FALLON  
ST. CLAIR COUNTY  
ILLINOIS

REV	DATE	DESCRIPTION
▲	5/29/17	ADDITIONAL INLET PROTECTION
▲		
▲		

DRAWN BY: COK	SHEET: 16
DESIGNED BY: NTS	OF 26 SHEETS
CHECKED BY: NTS	
APPROVED BY: NTS	
PROJECT NUMBER: T25140517	PROJECT: PORTER RD. RECONSTRUCTION
<input checked="" type="checkbox"/> ISSUED FOR REVIEW	<input type="checkbox"/> ISSUED FOR BIDDING
<input type="checkbox"/> ISSUED FOR CONSTR.	<input type="checkbox"/> RECORD DRAWING



C:\Users\moerchen\appdata\local\temp\AutoCAD\_75601140517-BUSC-1902P.dwg  
Plot Date: 5/27/2017 11:00am