

STATE OF ILLINOIS
DEPARTMENT OF TRANSPORTATION

F.A. R.T.E.	SECTION	COUNTY	TOTAL SHEETS	SHEET NO.
VAR.	2017-011-TR	VARIOUS	6	1
		ILLINOIS	CONTRACT NO. 62F12	

FOR INDEX OF SHEETS, SEE SHEET NO. 2

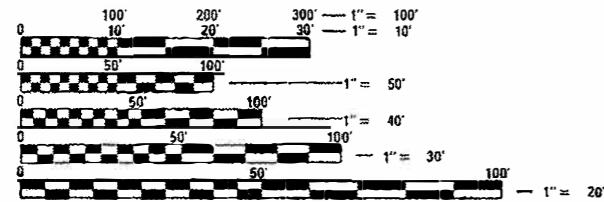
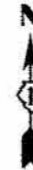
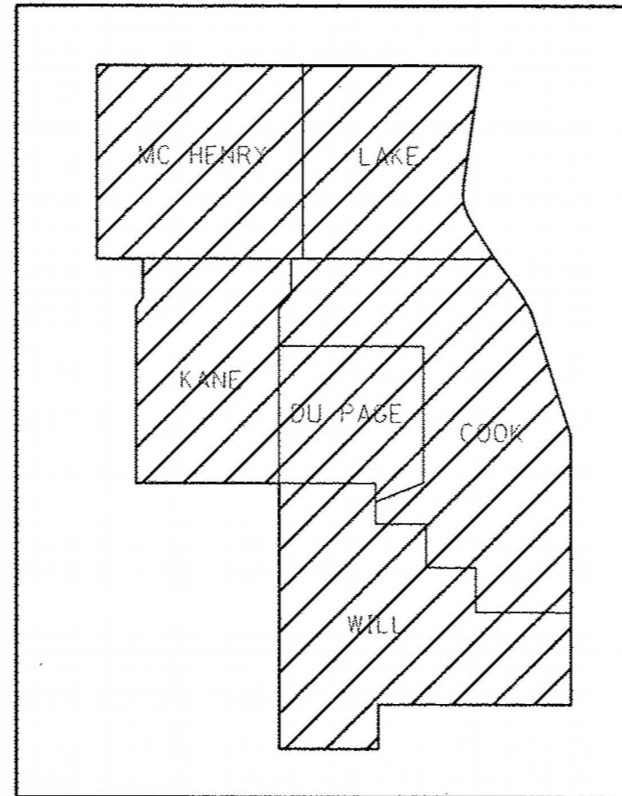
PROPOSED HIGHWAY PLANS

ROUTE: VARIOUS
SECTION: 2017-011-TR
TREE REMOVAL
VARIOUS COUNTIES

C-91-220-17



IMPROVEMENTS ARE AT VARIOUS
LOCATIONS WITHIN DISTRICT ONE



FULL SIZE PLANS HAVE BEEN PREPARED USING STANDARD ENGINEERING SCALES. REDUCED SIZED PLANS WILL NOT CONFORM TO STANDARD SCALES. IN MAKING MEASUREMENTS ON REDUCED PLANS, THE ABOVE SCALES MAY BE USED.

J.U.L.I.E.
JOINT UTILITY LOCATION INFORMATION FOR EXCAVATION
1-800-892-0123
OR 811

PROJECT ENGINEER JAMES STUMPNER
PROJECT MANAGER GIOVANNA ZAFFINA (847) 705-4171

CONTRACT NO. 62F12

STATE OF ILLINOIS
DEPARTMENT OF TRANSPORTATION

SUBMITTED *April 3 2017*
Smith & Dwyer
REGIONAL ENGINEER

May 12 2017
Manson M. Addis
ENGINEER OF DESIGN AND ENVIRONMENT

May 12 2017
David [Signature]
DIRECTOR OF PROGRAM DEVELOPMENT

PRINTED BY THE AUTHORITY
OF THE STATE OF ILLINOIS

INDEX OF SHEETS

<u>SHEET NO.</u>	<u>DESCRIPTION</u>
1	COVER SHEET
2	INDEX OF SHEETS, GENERAL NOTES, & STATE STANDARDS
3	SUMMARY OF QUANTITIES
4	WORK ORDER
5-6	DISTRICT DETAILS

HIGHWAY STANDARDS

- 701001-02 OFF-ROAD OPERATIONS, 2L, 2W, MORE THAN 15' AWAY
- 701006-05 OFF-ROAD OPERATIONS, 2L, 2W, 15' TO 24" FROM PAVEMENT EDGE
- 701101-05 OFF-ROAD OPERATIONS, MULTILANE, 15' TO 24" FROM PAVEMENT EDGE
- 701106-02 OFF-ROAD OPERATIONS, MULTILANE, MORE THAN 15' AWAY
- 701201-04 LANE CLOSURE, 2L, 2W, DAY ONLY, FOR SPEEDS \geq 45 MPH
- 701301-04 LANE CLOSURE, 2L, 2W, SHORT TIME OPERATIONS
- 701421-08 LANE CLOSURE, MULTILANE, DAY OPERATIONS ONLY FOR SPEEDS \geq 45 MPH TO 55 MPH
- 701501-06 URBAN LANE CLOSURE, 2L, 2W, UNDIVIDED
- 701601-09 URBAN LANE CLOSURE, MULTILANE, 1W OR 2W WITH
NON TRAVERSABLE MEDIAN
- 701901-06 TRAFFIC CONTROL DEVICES

FILE NAME : H:\DB\EB\H\TEG\Illinois.gov\PM\DOT\Documents\DOT Offices\Districts\Projects\DOT\DRAWN\ata\Structures\DOT\Blight\Standards	USER NAME : delosrosas	DESIGNED : -	REVISED : 9/19/2016
PLOT SCALE : 1/8"=1'-0"	CHECKED : -	REVISED : -	REVISED : -

STATE OF ILLINOIS
DEPARTMENT OF TRANSPORTATION

INDEX OF SHEETS, GENERAL NOTES, & STATE STANDARDS

F.A. - RTE.	SECTION	COUNTY	TOTAL SHEETS	SHEET NO.
VAR.	2017-011-TR	VARIOUS	6	2
CONTRACT NO. 62F12				

URBAN

SUMMARY OF QUANTITIES			CONSTRUCTION TYPE CODE				SUMMARY OF QUANTITIES			CONSTRUCTION TYPE CODE				
CODE NO	ITEM	UNIT	TOTAL QUANTITIES	0031	0031					TOTAL QUANTITIES				
				FORMAL FUNDS	MAINT. FUNDS									
20100110	TREE REMOVAL (6 TO 15 UNITS DIAMETER)	UNIT	8566	7885	681									
20100210	TREE REMOVAL (OVER 15 UNITS DIAMETER)	UNIT	10,100		10,100									
20101300	TREE PRUNING (1 TO 10 INCH DIAMETER)	EACH	10		10									
20101350	TREE PRUNING (OVER 10 INCH DIAMETER)	EACH	10		10									
67100100	MOBILIZATION	LSUM	1		1									
X0325222	WEED CONTROL, BASAL TREATMENT	GALLON	10		10									
X0327900	TREE REMOVAL (UNDER 6 INCH DIAMETER SAWED FLUSH)	IN-DIA	1100		1100									
X2010100	TREE LIMB REMOVAL (4 TO 10 INCHES DIAMETER)	EACH	15		15									
X2010200	TREE LIMB REMOVAL (OVER 10 INCHES DIAMETER)	EACH	20		20									
X2010310	TREE REMOVAL (SPECIAL)	UNIT	6		6									
X2010350	TREE REMOVAL, ACRES (SPECIAL)	ACRE	10	10										
X2010400	STUMP REMOVAL ONLY	UNIT	5000	5000										
Z0064800	SELECTIVE CLEARING	UNIT	48		48									

FILE NAME: p:\VLD\4E8\B\GHT\G\m\nd\sp\p\m\DOT\Documents\UD	USER NAME: d\resort\lms	DESIGNED: DRAWN	REVISED: REVISED
OFFICE: District NY/aj/aj\nd\p\k\40400m\Structur\k\D	PL07 SCALE: 100.00% 1/16	CHECKED: -	REVISED: REVISED

STATE OF ILLINOIS
DEPARTMENT OF TRANSPORTATION

TREE REMOVAL
SUMMARY OF QUANTITIES

F.A. RTE. YAB.	SECTION 2017-011-1B	COUNTY VARIOUS	TOTAL SHEETS 6	SHEET NO. 3
			CONTRACT NO. 62E12	



Tree Removal Work Order Number:

Page: of

Standard - 30 Day Priority -

Prepared By:

Contract: 62F12

Cook	DuPage	Kane
Lake	McHenry	Will

North
South

Team Section

Marked Route: Municipality:

Location:

ID No.	Sheet No.	Acres (X2010350)	Length	Width (ft)

Special Instructions

AUTHORIZATION OF WORK

Resident Engineer/Technician Signature

Issue Date Contractor Signature

CERTIFICATION OF COMPLETED WORK

Contractor Signature

Date work order completed

OFFICE USE ONLY

Measured in Place by: Initials(s) Date

Calculated by:

Checked by:

INSPECTION AND ACCEPTANCE OF COMPLETED WORK

Inspector Signature

Date work order Inspected and Accepted

This is to certify that the work order has been completed.



Tree Removal Work Order Number:

Page: of

Standard - 30 Day Priority -

Prepared By:

Kahlil Clemmons

Contract: 62F12

Cook	DuPage	Kane
Lake	McHenry	Will

North
South

Team Section

Marked Route: Municipality: Side of Road:

Location:

Tree tape was used to measure the diameter of the tree

Tree No.	Stump Rem. Only (X2010400)	Limb Removals		TREE REMOVAL		
		4" - 10" (X2010100)	> 10" (X2010200)	< 6" (X2010310)	6" - 15" (20100110)	> 15" (20100210)

Special Instructions

Reason for removal

AUTHORIZATION OF WORK

Resident Engineer/Technician Signature

Date work order issued Contractor Initials

CERTIFICATION OF COMPLETED WORK

Contractor Signature

Date work order completed

OFFICE USE ONLY

Measured in Place by: Initials(s) Date

Calculated by:

Checked by:

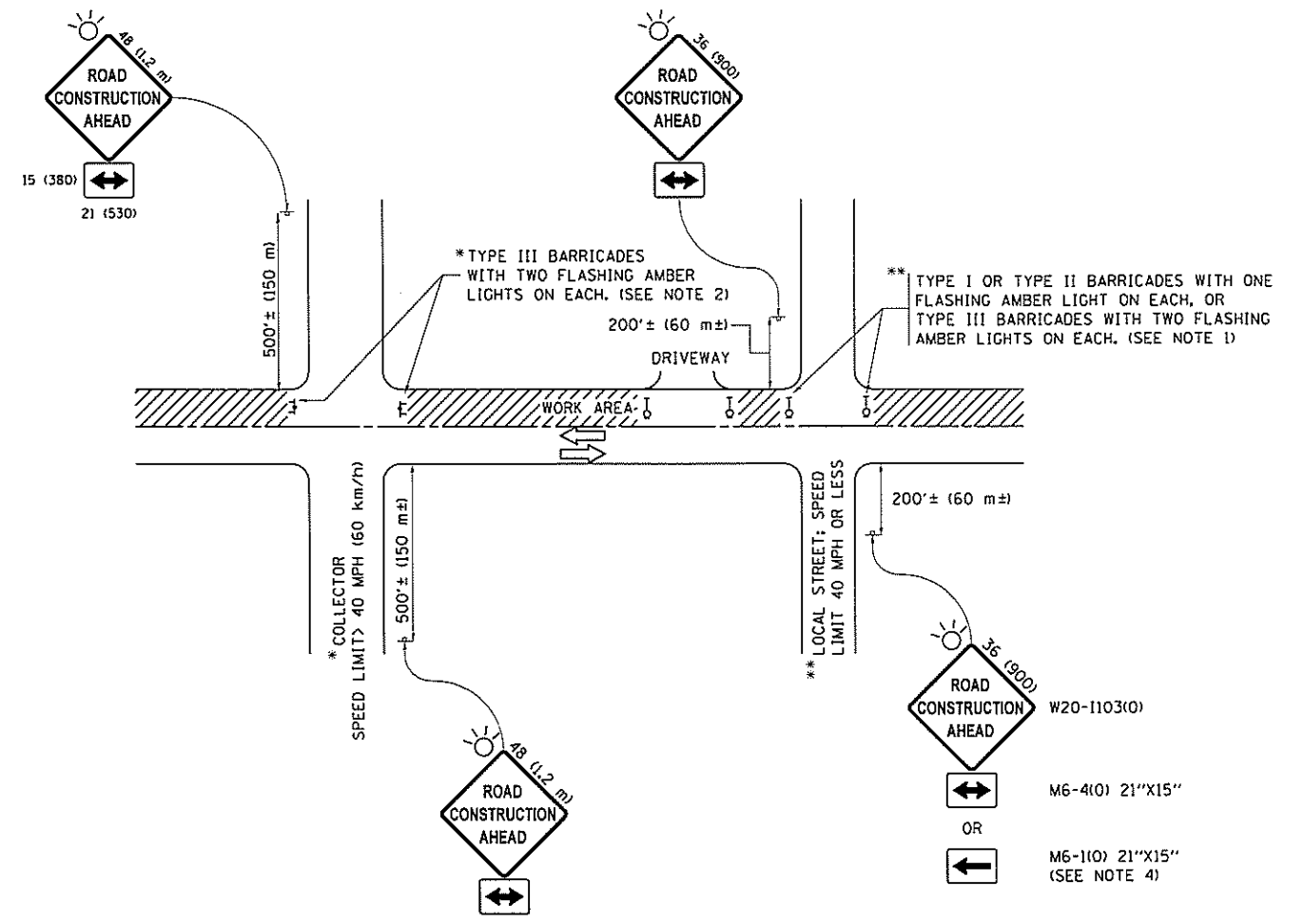
INSPECTION AND ACCEPTANCE OF COMPLETED WORK

Inspector Signature

Date work order Inspected and Accepted

This is to certify that the work order has been completed.

THE TWO (2) TYPES OF SHOWN WORK ORDERS ARE SAMPLE FORMS ONLY.



NOTES:

1. SIDE ROAD WITH A SPEED LIMIT OF 40 MPH (60 km/h) OR LESS AS SHOWN ON THE DRAWING AND AS DIRECTED BY THE ENGINEER:
 - a) ONE "ROAD CONSTRUCTION AHEAD" SIGN 36 x 36 (900x900) WITH A FLASHER MOUNTED ON IT APPROXIMATELY 200' (60 m) IN ADVANCE OF THE MAIN ROUTE.
 - b) THE CLOSED PORTION OF THE MAIN ROUTE SHALL BE PROTECTED BY BLOCKING WITH TYPE I, TYPE II OR TYPE III BARRICADES, 1/3 OF THE CROSS SECTION OF THE CLOSED PORTION.
2. SIDE ROAD WITH A SPEED LIMIT GREATER THAN 40 MPH (60 km/h) AS SHOWN ON THE DRAWING AND AS DIRECTED BY THE ENGINEER:
 - a) ONE "ROAD CONSTRUCTION AHEAD" SIGN 48 x 48 (1.2 m x 1.2 m) WITH A FLASHER MOUNTED ON IT APPROXIMATELY 500' (150 m) IN ADVANCE OF THE MAIN ROUTE.
 - b) THE CLOSED PORTION OF THE MAIN ROUTE SHALL BE PROTECTED BY BLOCKING WITH TYPE III BARRICADES, 1/2 OF THE CROSS SECTION OF THE CLOSED PORTION.
3. CONES MAY BE SUBSTITUTED FOR BARRICADES OR DRUMS AT HALF THE SPACING DURING DAY OPERATIONS. CONES SHALL BE A MINIMUM OF 28 (710) IN HEIGHT.
4. WHEN THE SIDE ROAD LIES BETWEEN THE BEGINNING OF THE MAINLINE SIGNING AND THE WORK ZONE, A SINGLE HEADED ARROW (M6-1) SHALL BE USED IN LIEU OF THE DOUBLE HEADED ARROW (M6-4).
5. WHEN WORK IS BEING PERFORMED ON A SIDE ROAD OR DRIVEWAY, FOLLOW THE APPLICABLE STANDARD(S). THE DIRECTIONAL ARROW (M6-1 OR M6-4) SHALL BE COVERED OR REMOVED WHEN NO LONGER CONSISTENT WITH THE TRAFFIC CONTROL SET-UP.
6. ADVANCE WARNING SIGNS ARE TO BE OMITTED ON DRIVEWAYS UNLESS OTHERWISE SPECIFIED IN THE PLANS OR BY THE ENGINEER.
7. THE TRAFFIC CONTROL AND PROTECTION FOR SIDE ROADS, INTERSECTIONS, AND DRIVEWAYS SHALL BE INCLUDED IN THE COST OF SPECIFIED TRAFFIC CONTROL STANDARDS OR ITEMS.

All dimensions are in inches (millimeters) unless otherwise shown.

FILE NAME :	USER NAME = footenj	DESIGNED - L.H.A.	REVISED - A. HOUSEH 10-15-96
pc:\llob\EBID\INTEG\Illinois.gov\PI\DOT\Documents\IDOT Offices\District 1\Projects\Dist	DRAWN: CA0Data\CADsheets\tcl0.dgn	CHECKED -	REVISED - T. RAMMACHER 01-06-00
Default	PLOT SCALE = 80.000 1/16 in.	DATE - 06-89	REVISED - A. SCHUETZE 07-01-13
	PLOT DATE = 9/15/2016		REVISED - A. SCHUETZE 09-15-16

**STATE OF ILLINOIS
DEPARTMENT OF TRANSPORTATION**

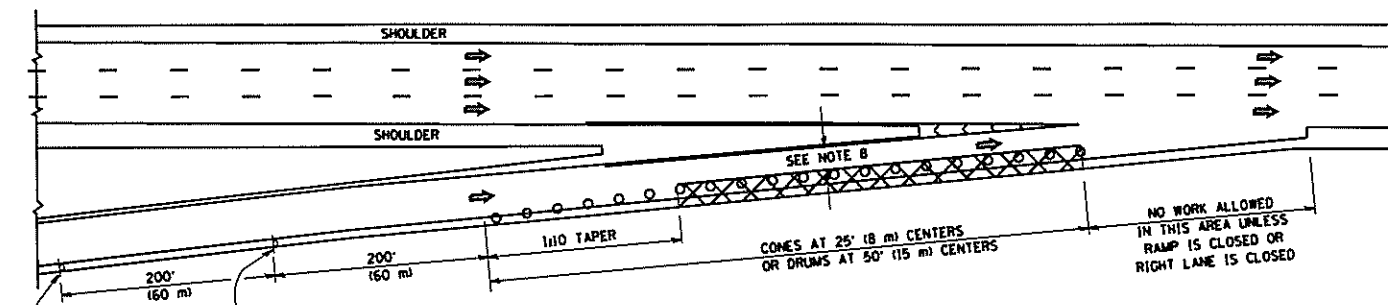
**TRAFFIC CONTROL AND PROTECTION FOR
SIDE ROADS, INTERSECTIONS, AND DRIVEWAYS**

SCALE: NONE SHEET 1 OF 1 SHEETS STA. TO STA.

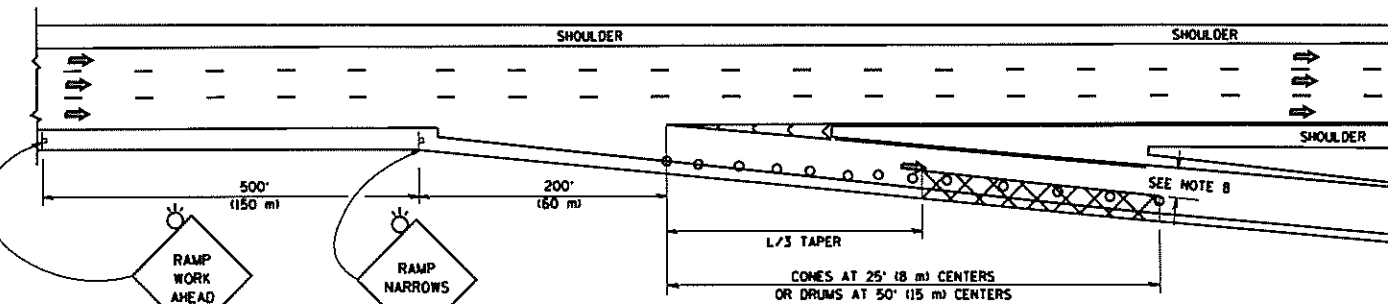
F.A. RTE.	SECTION	COUNTY	TOTAL SHEETS	SHEET NO.
VAR	2017-011-TR	VARIOUS	6	5
TC-10			CONTRACT NO. 02F12	
[ILLINOIS] FED. AID PROJECT				

PARTIAL RAMP CLOSURE DETAILS

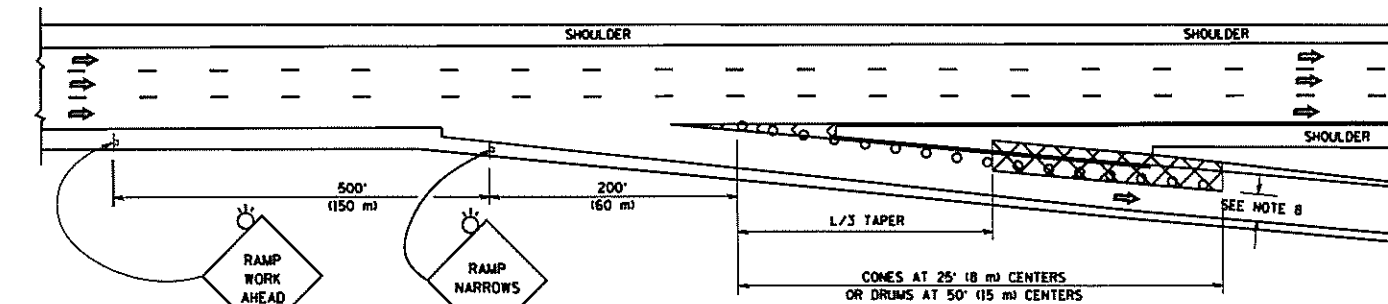
SHOULDER CLOSURE DETAILS



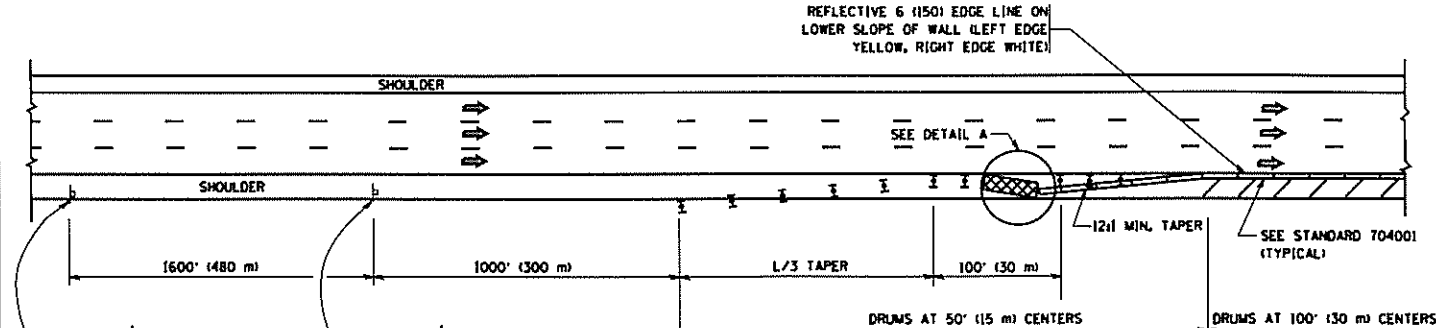
TYPICAL ENTRANCE RAMP



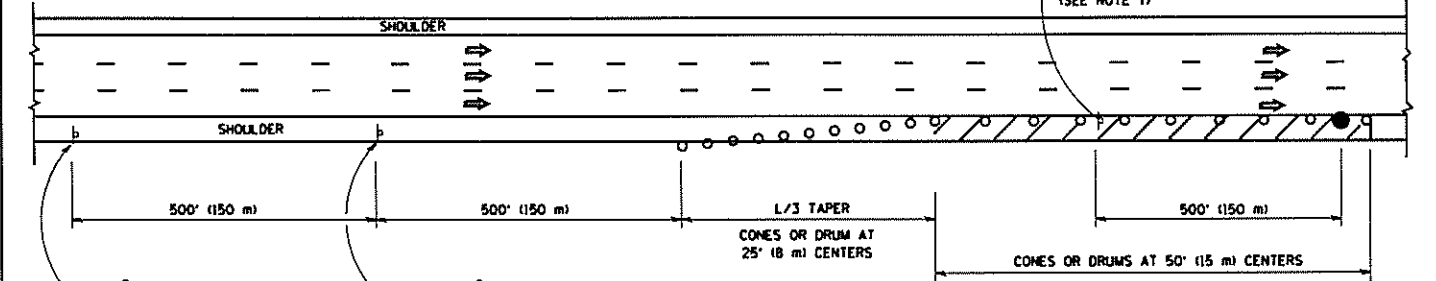
TYPICAL EXIT RAMP



TYPICAL EXIT RAMP

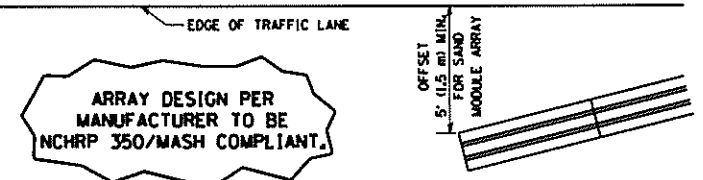


PERMANENT SHOULDER CLOSURE



DAYTIME SHOULDER CLOSURE

THIS DETAIL IS USED WHERE:
 1. VEHICLES, EQUIPMENT, WORKERS OR THEIR ACTIVITIES ENCRANCH IN AN AREA CLOSER THAN 15' (4.5 m) TO THE EDGE OF PAVEMENT FOR A PERIOD IN EXCESS OF 15 MINUTES.



**DETAIL "A"
 IMPACT ATTENUATOR, TEMPORARY
 (SEE NOTE 5)**

SYMBOLS

- ACTIVE WORK AREA
- SIGN ON PORTABLE OR PERMANENT SUPPORT
- FLAGGER WITH CONTROL SIGN
- TYPE II BARRICADE OR DRUM WITH STEADY BURN MONO-DIRECTIONAL LIGHT
- CONE, DRUM OR BARRICADE
- IMPACT ATTENUATOR OF TYPE AND TEST LEVEL SPECIFIED

GENERAL NOTES

1. THE "L" DISTANCE EQUALS:

SPEED LIMIT	FORMULAS
45 mph (80 km/h) OR GREATER	METRIC: $L = 0.65(W)(S)$ ENGLISH: $L = (W)(S)$
	W = WIDTH OF OFFSET IN FEET (METERS) S = NORMAL POSTED SPEED MPH (KM/H)
2. PLASTIC DRUMS WITH HIGH PERFORMANCE REFLECTIVE SHEETING AND STEADY BURNING LIGHTS ARE REQUIRED FOR ALL NIGHTTIME CLOSURES.
3. ALL SIGNS SHALL BE POST MOUNTED IF THE CLOSURE TIME EXCEEDS FOUR DAYS.
4. FLASHING LIGHTS SHALL BE USED DURING THE HOURS OF DARKNESS AND SHALL BE INSTALLED ABOVE THE FIRST TWO SETS OF SIGNS.

5. THE IMPACT ATTENUATOR, TEMPORARY IS NOT REQUIRED WHEN THE TEMPORARY CONCRETE BARRIER WALL IS PROTECTED BY OR IS TIED INTO THE EXISTING GUARDRAIL. IF OFFSET IS LESS THAN 5 FEET USE NARROW USE TYPE DEVICE TO MEET NCHRP350/MASH.
6. AUTHORIZATION FROM THE DISTRICT'S BUREAU OF TRAFFIC IS REQUIRED FOR ALL FREEWAY CLOSURES.
7. THE FLAGGER AND FLAGGER SIGN ARE REQUIRED AT THE ABOVE WORK SITES WHEN:
 - a. FOUR OR MORE WORK VEHICLES ENTER THE TRAFFIC LANES IN A ONE HOUR PERIOD.
 - b. THE WORK ACTIVITY REQUIRES FREQUENT ENCRANCHMENT INTO THE LANE OPEN TO TRAFFIC. THE FLAGGER SHALL BE STATIONED APPROXIMATELY 100' (30 m) TO 200' (60 m) IN ADVANCE OF THE WORKERS.
8. 12' MIN. WIDTH TANGENT SECTION
16' MIN. WIDTH CURVE SECTION.

ALL DIMENSIONS ARE IN INCHES (MILLIMETERS) UNLESS OTHERWISE SHOWN.

FILE NAME : c:\pw_work\pvidat\1ayaa\08108315\c17.dgn	USER NAME : 1ayaa	DESIGNED -	REVISED - J.A.F. 12-06	STATE OF ILLINOIS DEPARTMENT OF TRANSPORTATION	TRAFFIC CONTROL DETAILS FOR FREEWAY SHOULDER CLOSURES AND PARTIAL RAMP CLOSURES			F.A. RTE.:	SECTION	COUNTY	TOTAL SHEETS	SHEET NO.	
	PLOT SCALE = 100.0000' / 1" =	DRAWN - D.W.S.	REVISED - S.P.B. 01-07		SCALE: NONE	SHEET NO. 1 OF 1 SHEETS	STA.	TO STA.	2017-011-TR	VARIOUS	6	6	
	PLOT DATE = 4/17/2014	CHECKED -	REVISED - S.P.B. 12-09						TC-17				
		DATE - 11-96	REVISED - M.D. 06-13						FED. ROAD DIST. NO. 1 ILLINOIS FED. AID PROJECT				CONTRACT NO. 02F12