

CODE NO.	ITEM	UNIT	TOTAL QUANTITY	CONSTRUCTION CODE			
				FULTON COUNTY	100% STATE	RURAL	
20200100	EARTH EXCAVATION	CU YD	828	828			
28000400	PERIMETER EROSION BARRIER	FEET	200	200			
42000301	PORTLAND CEMENT CONCRETE PAVEMENT 8" (JOINTED)	SQ YD	3469	3469			
42001300	PROTECTIVE COAT	SQ YD	3469	3469			
44000100	PAVEMENT REMOVAL	SQ YD	749	749			
60260300	INLETS TO BE ADJUSTED WITH NEW TYPE 1 FRAME, OPEN LID	EACH	1	1			
67100100	MOBILIZATION	L SUM	1	1			
X0350810	BOLLARD REMOVAL	EACH	12	12			
Z0001110	GAS VALVE TO BE ADJUSTED	EACH	1	1			
Z0004002	BOLLARDS	EACH	12	12			
Z0013798	CONSTRUCTION LAYOUT	L SUM	1	1			

MODEL: Default
FILE NAME: C:\31files\21081_IDOT - DST - 4 - FTB 201-033\Work - Order 13 - FY 2023 - Parking Lots\18 Transportation\CADD Sheets\Lewisdown Yard\003 - Summary - Quant - Sht.dgn

KLINGNER & ASSOCIATES, P.C.
 Engineers • Architects • Surveyors
 Galesburg, Illinois
 44 North Perry Street
 Galesburg, IL 62541
 Phone: 309.343.4422

USER NAME = mrich	DESIGNED - RTB	REVISED -
PLOT SCALE = 2.0000' / in.	DRAWN - RTB	REVISED -
PLOT DATE = 3/17/2023	CHECKED - MCL	REVISED -
	DATE - 3/1/23	REVISED -

**STATE OF ILLINOIS
DEPARTMENT OF TRANSPORTATION**

SUMMARY OF QUANTITIES

SCALE: NONE SHEET 1 OF 2 SHEETS STA. N/A TO STA. N/A

F.A.P. RTE.	SECTION	COUNTY	TOTAL SHEETS	SHEET NO.
N/A	D4 PARKING LOT RESURF 2023	FULTON	9	3
CONTRACT NO. 68H66			ILLINOIS FED. AID PROJECT	

PARKING LOT SCHEDULE						
LOCATION	EARTH EXCAVATION	PERIMETER EROSION BARRIER	PCC PVMT 8", JOINTED	PROTECTIVE COAT	PAVEMENT REMOVAL	INLETS TO BE ADJUSTED WITH NEW TY 1 F&G, OL
	CU YD	FOOT	SQ YD	SQ YD	SQ YD	EACH
LEWISTOWN FACILITY (FULTON)						
TOTALS	828	200	3469	3469	749	1
USE	828	200	3469	3469	749	1



PARKING LOT SCHEDULE (CONTINUED)					
LOCATION	MOBILIZATION	BOLLARD REMOVAL	BOLLARDS	GAS VALVE TO BE ADJUSTED	CONSTRUCTION LAYOUT
	L SUM	EACH	EACH	EACH	L SUM
LEWISTOWN FACILITY (FULTON)					
TOTALS	1	12	12	1	1
USE	1	12	12	1	1

MODEL: Default
 FILE NAME: C:\Users\131081.IDOT\DOT\201\03\Work\Order_13 - FY 2023 Parking Lots\18 Transportation\CADD Sheets\Lewistown Yard\005 Schedule Quant_Sht.dgn



USER NAME = mrich	DESIGNED - RTB	REVISED -
	DRAWN - RTB	REVISED -
PLOT SCALE = 100.0000 7 in.	CHECKED - MCL	REVISED -
PLOT DATE = 3/17/2023	DATE - 3/1/23	REVISED -

STATE OF ILLINOIS
DEPARTMENT OF TRANSPORTATION

SCHEDULE OF QUANTITIES

SCALE: NONE SHEET I OF I SHEETS STA. N/A TO STA. N/A

F A P RTE.	SECTION	COUNTY	TOTAL SHEETS	SHEET NO.
N/A	D4 PARKING LOT RESURF 2023	FULTON	9	5
CONTRACT NO. 68H66			ILLINOIS FED. AID PROJECT	



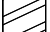
PLAN NOTES

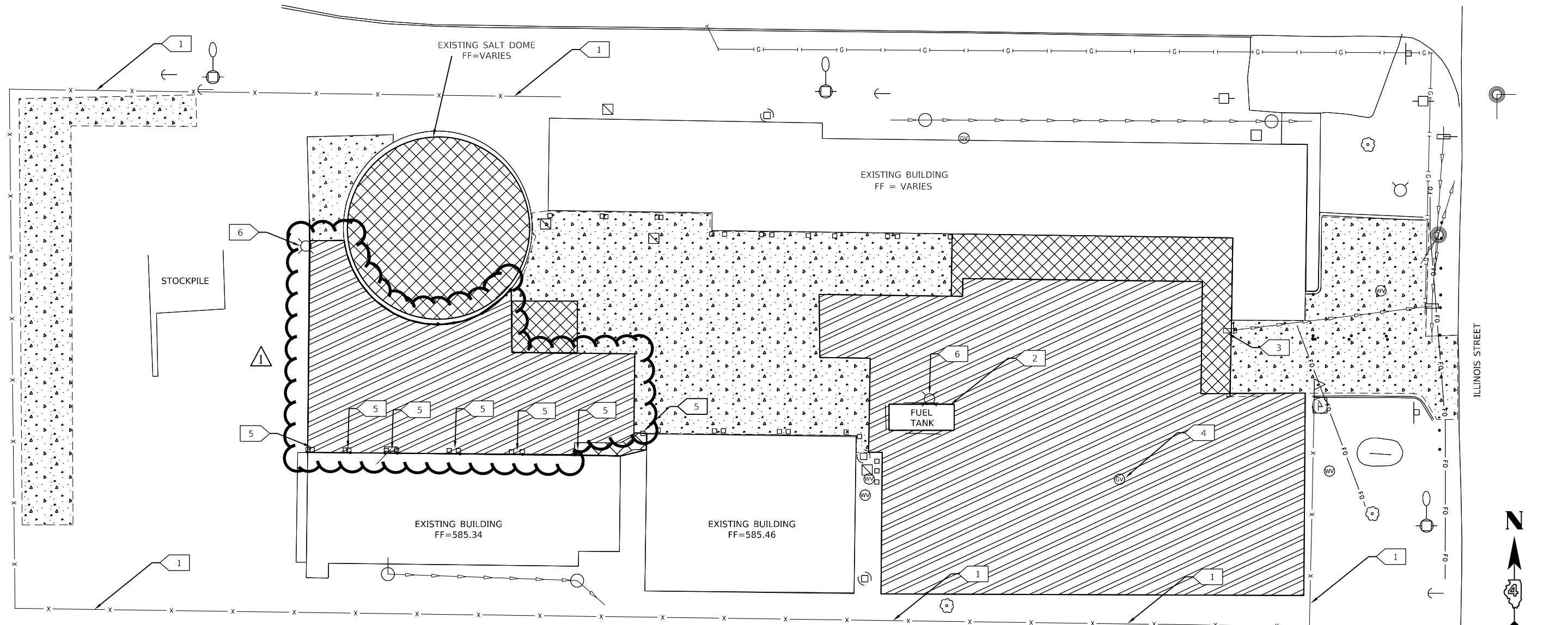
1. THE CONTRACTOR MUST PROVIDE ACCESS TO THE YARD AT ALL TIMES.
ACCESS MAY BE GRANTED OUTSIDE NORMAL IDOT WORKING HOURS SO THAT WORK CAN BE COMPLETED.

SITE DEMOLITION PLAN KEY:

- 1 FENCE TO REMAIN
- 2 TANKS TO REMAIN
- 3 INLET TO BE ADJUSTED
- 4 VALVE TO BE ADJUSTED
- 5 REMOVE BOLLARDS
- 6 LIGHT POLE TO REMAIN

LEGEND

-  REMOVE EXISTING PCC PAVEMENT
-  EXISTING PCC PAVEMENT TO REMAIN
-  EXCAVATE EXISTING GRAVEL



MODEL: Mch1
 FILE NAME: P:\Galesburg\21\file\213081_IDOT_DIST_4_PTB_201-03\Work Order 13 - FY 2023 Parking Lot\18 Transportation\CADD Sheets\Keweenaw_Yard\006_Keweenaw_DEMO.dgn
 Galesburg, Illinois
 49 North State Street
 980-355-6162

REV 5-31-2023

KLINGNER & ASSOCIATES, P.C.
 Engineers • Architects • Surveyors
 www.klingner.com
 Galesburg, Illinois
 Quincy, IL, Marshall, MO
 Burlington, IA, Peoria, IA, Columbus, MO
 Evansville, IN, Charleston, IL

USER NAME = mirch	DESIGNED - RTB	REVISED -
PLOT SCALE = 40,000 / in.	DRAWN - RTB	REVISED -
PLOT DATE = 5/30/2023	CHECKED - MCL	REVISED -
	DATE - 3/1/23	REVISED -

**STATE OF ILLINOIS
DEPARTMENT OF TRANSPORTATION**

DEMOLITION PLAN

SCALE: 1"=20' SHEET 1 OF 1 SHEETS STA. N/A TO STA. N/A

F.A.P. RTE.	SECTION	COUNTY	TOTAL SHEETS	SHEET NO.
N/A	D4 PARKING LOT RESURF 2023	FULTON	9	6
CONTRACT NO. 68H66				
ILLINOIS FED. AID PROJECT				