



CODE NO.	ITEM	UNIT	TOTAL QUANTITY	CONSTRUCT DN CODE				
				80% FED / 20% STATE	80% FED / 20% STATE	80% FED / 20% STATE	80% FED / 20% STATE	100% ELG N
				BR DGE	HIGHWAY LIGHTING	ROADWAY	TRAFFIC SIGNALS	CITY OF ELG N
				0010	0021	0003	0021	0043
				045-2106	URBAN	URBAN	URBAN	UTILITIES
* * 66900200	NON-SPECIAL WASTE DISPOSAL	CU YD	3725			2,656 <del>3,725</del>		1,069
* * 66900530	SOIL DISPOSAL ANALYSIS	EACH	6			6		
* * 66901001	REGULATED SUBSTANCES PRE-CONSTRUCTION PLAN	L SUM	1			1		
* * 66901003	REGULATED SUBSTANCES FINAL CONSTRUCTION REPORT	L SUM	1			1		
* * 66901006	REGULATED SUBSTANCES MONITORING	CAL DA	200			200		
67100100	MOBILIZATION	L SUM	1			1		
70103815	TRAFFIC CONTROL SURVEILLANCE	CAL DA	24			24		
70107025	CHANGEABLE MESSAGE SIGN	CAL DA	960			960		
70200100	NIGHTTIME WORK ZONE LIGHTING	L SUM	1			1		
70300150	SHORT TERM PAVEMENT MARKING REMOVAL	SQ FT	29361			29361		
70300211	TEMPORARY PAVEMENT MARKING LETTERS AND SYMBOLS - PAINT	SQ FT	78			78		
70300221	TEMPORARY PAVEMENT MARKING - LINE 4" - PAINT	FOOT	7778			7778		
70300241	TEMPORARY PAVEMENT MARKING - LINE 6" - PAINT	FOOT	1174			1174		
70300251	TEMPORARY PAVEMENT MARKING - LINE 8" - PAINT	FOOT	307			307		



\* DENOTES SPECIAL PROVISION    \*\* DENOTES SPECIALTY ITEM    \*\*\* DENOTES SPECIAL PROVISION AND SPECIALTY ITEM    # CITY OF ELGIN

REVISOR SHEET 6/6/2023

3/24/2023 8:25:31 AM P:\projects\1600018164\DISCIPLINE\CH\Working\Sheets\01-General\01\_62G41\_ah\_S0012.dgn



DESIGNED - MN	REVISED -
DRAWN - DR	REVISED -
CHECKED - MN	REVISED -
DATE - 03/24/2023	REVISED -

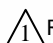
STATE OF ILLINOIS  
DEPARTMENT OF TRANSPORTATION

SUMMARY OF QUANTITIES	
SCALE: NONE	SHEET 12 OF 26 SHEETS STA. TO STA.

F.A.P. RTE. 345A	SECTION NHPP-8HB-2	COUNTY KANE	TOTAL SHEETS 359	SHEET NO. 15
CONTRACT NO. 62G41			ILLINOIS FED. AID PROJECT	

CODE NO.	ITEM	UNIT	TOTAL QUANTITY	CONSTRUCT DN CODE				
				80% FED / 20% STATE	80% FED / 20% STATE	80% FED / 20% STATE	80% FED / 20% STATE	100% ELGIN
				BRIDGE	HIGHWAY LIGHTING	ROADWAY	TRAFFIC SIGNALS	CITY OF ELGIN
				0010	0021	0003	0021	0043
				045-2106	URBAN	URBAN	URBAN	UTILITIES
78100200	TEMPORARY RAISED REFLECTIVE PAVEMENT MARKER	EACH	155			155		
78300200	RAISED REFLECTIVE PAVEMENT MARKER REMOVAL	EACH	155			155		
78300201	PAVEMENT MARKING REMOVAL - GRINDING	SQ FT	14858.14			14858.14		
78300202	PAVEMENT MARKING REMOVAL - WATER BLASTING	SQ FT	31703.06			31703.06		
***	80400100 ELECTRIC SERVICE INSTALLATION	EACH	1		1			
*	80400200 ELECTRIC UTILITY SERVICE CONNECTION	L SUM	2		2			
**	81028200 UNDERGROUND CONDUIT, GALVANIZED STEEL, 2" DIA.	FOOT	2021 <del>2091</del>		<del>70</del>		2021	
**	81028220 UNDERGROUND CONDUIT, GALVANIZED STEEL, 3" DIA.	FOOT	1496 <del>1026</del>		1,385		111	
**	81028240 UNDERGROUND CONDUIT, GALVANIZED STEEL, 4" DIA.	FOOT	1052				1052	
**	81100320 CONDUIT ATTACHED TO STRUCTURE, 1" DIA., PVC COATED GALVANIZED STEEL	FOOT	598 <del>435</del>		598 <del>435</del>			
**	81100805 CONDUIT ATTACHED TO STRUCTURE, 3" DIA., PVC COATED GALVANIZED STEEL	FOOT	16		16			
**	81101000 CONDUIT ATTACHED TO STRUCTURE, 4" DIA., GALVANIZED STEEL	FOOT	368				368	
**	<del>81200230 CONDUIT EMBEDDED IN STRUCTURE, 2" DIA., PVC</del>	<del>FOOT</del>	<del>336</del>		<del>336</del>			
**	81300220 JUNCTION BOX, STAINLESS STEEL, ATTACHED TO STRUCTURE, 6" X 6" X 4"	EACH	6		6			

\* DENOTES SPECIAL PROVISION    \*\*DENOTES SPECIALTY ITEM    \*\*\* DENOTES SPECIAL PROVISION AND SPECIALTY ITEM    # CITY OF ELGIN

 REVISED SHEET 6/6/2023

3/24/2023 8:25:40 AM P:\Projects\1800018\B4\DISCIPLINE\Working\Sheets\01-General\01\_B02CH1\_Lin\_S0016.dgn



DESIGNED - MN	REVISED -
DRAWN - DR	REVISED -
CHECKED - MN	REVISED -
DATE - 03/24/2023	REVISED -

STATE OF ILLINOIS  
DEPARTMENT OF TRANSPORTATION

SUMMARY OF QUANTITIES

SCALE: NONE    SHEET 16 OF 26 SHEETS    STA.    TO STA.

F.A.P. RTE.	SECTION	COUNTY	TOTAL SHEETS	SHEET NO.
345A	NHPP-BHB-2	KANE	359	19
CONTRACT NO. 62G41			ILLINOIS FED. AID PROJECT	

REV-SEP

CODE NO.	ITEM	UNIT	TOTAL QUANTITY	CONSTRUCT DN CODE				
				80% FED / 20% STATE	80% FED / 20% STATE	80% FED / 20% STATE	80% FED / 20% STATE	100% ELGIN
				BRIDGE	HIGHWAY LIGHTING	ROADWAY	TRAFFIC SIGNALS	CITY OF ELGIN
				0010	0021	0003	0021	0043
				045-2106	URBAN	URBAN	URBAN	UTILITIES
** 81300530	JUNCTION BOX, STAINLESS STEEL, ATTACHED TO STRUCTURE, 12" X 10" X 6"	EACH	6		6			
** 81300830	JUNCTION BOX, STAINLESS STEEL, ATTACHED TO STRUCTURE, 18" X 18" X 8"	EACH	2		2			
** 81400100	HANDHOLE	EACH	6				6	
** 81400300	DOUBLE HANDHOLE	EACH	6				6	
# ** 81400730	HANDHOLE, COMPOSITE CONCRETE	EACH	5					5
** 81603051	UNIT DUCT, 600V, 3-1C NO.6, 1/C NO.8 GROUND, (XLP-TYPE USE), 1 1/4" DIA POLYETHYLENE	FOOT	7857 <del>8087</del>		7857 <del>8087</del>			
** 81702110	ELECTRIC CABLE IN CONDUIT, 600V (XLP-TYPE USE) 1/C NO. 10	FOOT	2500 <del>488</del>		2500 <del>488</del>			
** 81702400	ELECTRIC CABLE IN CONDUIT, 600V (XLP-TYPE USE) 3-1/C NO. 2	FOOT	40		40			
** 81702450	ELECTRIC CABLE IN CONDUIT, 600V (XLP-TYPE USE) 3-1/C NO. 10	FOOT	478		478			
** 82110008	LUMINAIRE, LED, ROADWAY, OUTPUT DESIGNATION H	EACH	39 <del>42</del>		39 <del>42</del>			
** 82110026	LUMINAIRE, LED, UNDERPASS, SUSPENDED, OUTPUT DESIGNATION D	EACH	6 <del>8</del>		6 <del>8</del>			
** 82500360	LIGHTING CONTROLLER, BASE MOUNTED, 480VOLT, 100AMP	EACH	1		1			
** 83050800	LIGHT POLE, ALUMINUM, 47.5 FT. M.H., 12 FT. MAST ARM	EACH	37 <del>42</del>		37 <del>42</del>			
** 83050900	LIGHT POLE, ALUMINUM, 47.5 FT. M.H., 2 - 12 FT. MAST ARM	EACH	1		1			
** 83600200	LIGHT POLE FOUNDATION, 24" DIAMETER	FOOT	468 <del>507</del>		468 <del>507</del>			

\* DENOTES SPECIAL PROVISION    \*\* DENOTES SPECIALTY ITEM    \*\*\* DENOTES SPECIAL PROVISION AND SPECIALTY ITEM    # CITY OF ELGIN

3/24/2023 8:25:42 AM P:\Projects\1600018164\DISCIPLINE\Working\Sheets\01-General\01\_80241\_ah\_S0017.dgn



DESIGNED - MN	REVISED -
DRAWN - DR	REVISED -
CHECKED - MN	REVISED -
DATE - 03/24/2023	REVISED -

DESIGNED - MN	REVISED -
DRAWN - DR	REVISED -
CHECKED - MN	REVISED -
DATE - 03/24/2023	REVISED -

STATE OF ILLINOIS  
DEPARTMENT OF TRANSPORTATION

SUMMARY OF QUANTITIES

SCALE: NONE    SHEET 17 OF 26 SHEETS    STA.    TO STA.

F.A.P. RTE.	SECTION	COUNTY	TOTAL SHEETS	SHEET NO.
345A	NHPP-8HB-2	KANE	359	20
ILLINOIS FED. AID PROJECT			CONTRACT NO. 62G41	

△ REVISED SHEET 6/6/2023

CODE NO.	ITEM	UNIT	TOTAL QUANTITY	CONSTRUCT DN CODE				
				80% FED / 20% STATE	80% FED / 20% STATE	80% FED / 20% STATE	80% FED / 20% STATE	100% ELG N
				BR DGE	HIGHWAY LIGHTING	ROADWAY	TRAFFIC SIGNALS	CITY OF ELG N
				0010	0021	0003	0021	0043
				045-2106	URBAN	URBAN	URBAN	UTILITIES
** 83800205	BREAKAWAY DEVICE, TRANSFORMER BASE, 15 INCH BOLT CIRCLE	EACH	38 <del>42</del>		38 <del>42</del>			
** 84200500	REMOVAL OF LIGHTING UNIT, SALVAGE	EACH	9 <del>10</del>		9 <del>10</del>			
** 84200804	REMOVAL OF POLE FOUNDATION	EACH	9 <del>10</del>		9 <del>10</del>			
** 84500110	REMOVAL OF LIGHTING CONTROLLER	EACH	1		1			
** 84500120	REMOVAL OF ELECTRIC SERVICE INSTALLATION	EACH	1		1			
** 84500130	REMOVAL OF LIGHTING CONTROLLER FOUNDATION	EACH	1		1			
** 85000200	MAINTENANCE OF EXISTING TRAFFIC SIGNAL INSTALLATION	EACH	1				1	
** 86400100	TRANSCEIVER - FIBER OPTIC	EACH	1				1	
** 87300925	ELECTRIC CABLE IN CONDUIT, TRACER, NO. 14 1C	FOOT	2052				2052	
** 87301215	ELECTRIC CABLE IN CONDUIT, SIGNAL NO. 14 2C	FOOT	4076				4076	
** 87301225	ELECTRIC CABLE IN CONDUIT, SIGNAL NO. 14 3C	FOOT	5577				5577	
** 87301245	ELECTRIC CABLE IN CONDUIT, SIGNAL NO. 14 5C	FOOT	8729				8729	
** 87301255	ELECTRIC CABLE IN CONDUIT, SIGNAL NO. 14 7C	FOOT	1427				1427	
** 87301305	ELECTRIC CABLE IN CONDUIT, LEAD-IN, NO. 14 1 PAIR	FOOT	5920				5920	

\* DENOTES SPECIAL PROVISION \*\* DENOTES SPECIALTY ITEM \*\*\* DENOTES SPECIAL PROVISION AND SPECIALTY ITEM # CITY OF ELGIN

REVIS<sup>1</sup>ED SHEET 6/6/2023

3/24/2023 8:25:44 AM P:\projects\1600018164\DISCIPLINE\Working\Sheets\01-General\01\_62G41\_ah1\_S0018.dgn



DESIGNED - MN	REVISED -
DRAWN - DR	REVISED -
CHECKED - MN	REVISED -
DATE - 03/24/2023	REVISED -

STATE OF ILLINOIS  
DEPARTMENT OF TRANSPORTATION

SUMMARY OF QUANTITIES

SCALE: NONE SHEET 18 OF 26 SHEETS STA. TO STA.

F.A.P. RTE.	SECTION	COUNTY	TOTAL SHEETS	SHEET NO.
345A	NHPP-8HB-2	KANE	359	21
CONTRACT NO. 62G41			ILLINOIS FED. AID PROJECT	

REV-SEP

CODE NO.	ITEM	UNIT	TOTAL QUANTITY	CONSTRUCT DN CODE				
				80% FED / 20% STATE	80% FED / 20% STATE	80% FED / 20% STATE	80% FED / 20% STATE	100% ELGIN
				BRIDGE	HIGHWAY LIGHTING	ROADWAY	TRAFFIC SIGNALS	CITY OF ELGIN
				0010	0021	0003	0021	0043
				045-2106	URBAN	URBAN	URBAN	UTILITIES
* X6026050	SANITARY MANHOLES TO BE ADJUSTED	EACH	5			5		
# * X6026055	SANITARY MANHOLE, SPECIAL	EACH	3					3
*** X6330725	STEEL PLATE BEAM GUARDRAIL (SHORT RADIUS)	FOOT	25			25		
* X6700410	ENGINEER'S FIELD OFFICE, TYPE A (SPECIAL)	CAL MO	30 <del>24</del>			30 <del>24</del>	⚠	
* X7010216	TRAFFIC CONTROL AND PROTECTION, (SPECIAL)	L SUM	1			1		
* X7010410	SPEED DISPLAY TRAILER	CAL MO	40			40		
*** X8360215	LIGHT POLE FOUNDATION, 24" DIAMETER, OFFSET	FOOT	26		26			
*** X8620200	UNINTERRUPTABLE POWER SUPPLY, SPECIAL	EACH	1				1	
*** X8710024	FIBER OPTIC CABLE IN CONDUIT, NO. 62.5/125, MM12F SM24F	FOOT	2052				2052	
*** X8760200	ACCESSIBLE PEDESTRIAN SIGNALS	EACH	12				12	
*** X8780012	CONCRETE FOUNDATION, TYPE A 12-INCH DIAMETER	FOOT	20				20	
** X8210405	LUMINAIRE SHIELD	EACH	15		15		⚠	
* Z0007430	TEMPORARY SIDEWALK	SQ FT	1383			1383		
* Z0012450	CONCRETE STEPS	CU YD	9.3			9.3		
* Z0012455	CONCRETE STEP REMOVAL	EACH	4			4		

\* DENOTES SPECIAL PROVISION    \*\* DENOTES SPECIALTY ITEM    \*\*\* DENOTES SPECIAL PROVISION AND SPECIALTY ITEM    # CITY OF ELGIN

⚠ REVISED SHEET 6/6/2023

3/24/2023 8:25:59 AM P:\projects\1600018164\DISCIPLINE\Working\Sheets\01-General\01\_62G41\_ah1\_S0205.dgn



DESIGNED - MN	REVISED -
DRAWN - DR	REVISED -
CHECKED - MN	REVISED -
DATE - 03/24/2023	REVISED -

STATE OF ILLINOIS  
DEPARTMENT OF TRANSPORTATION

SUMMARY OF QUANTITIES

SCALE: NONE    SHEET 25 OF 26 SHEETS    STA.    TO STA.

F.A.P. RTE.	SECTION	COUNTY	TOTAL SHEETS	SHEET NO.
345A	NHPP-8HB-2	KANE	359	28
CONTRACT NO. 62G41			ILLINOIS FED. AID PROJECT	

CODE NO.	ITEM	UNIT	TOTAL QUANTITY	CONSTRUCT DN CODE				
				80% FED / 20% STATE	80% FED / 20% STATE	80% FED / 20% STATE	80% FED / 20% STATE	100% ELG N
				BR DGE	HIGHWAY LIGHTING	ROADWAY	TRAFFIC SIGNALS	CITY OF ELG N
				0010	0021	0003	0021	0043
				045-2106	URBAN	URBAN	URBAN	UTILITIES
* Z0013798	CONSTRUCTION LAYOUT	L SUM	1			1		
* Z0018002	DRAINAGE SCUPPERS, DS-11	EACH	7	7				
* Z0018010	DRAINAGE SCUPPERS, DS-33	EACH	2	2				
* Z0030850	TEMPORARY INFORMATION SIGNING	SQ FT	102.8			102.8		
** Z0033020	LUMINAIRE SAFETY CABLE ASSEMBLY	EACH	39 <del>42</del>		39 <del>42</del>			
** Z0033046	RE-OPTIMIZE TRAFFIC SIGNAL SYSTEM LEVEL 2	EACH	1				1	
#** Z0044298	PRESSURE CONNECTION TO EXISTING WATER MAIN	EACH	2					2
* Z0056608	STORM SEWER (WATER MAIN REQUIREMENTS) 12 INCH	FOOT	432			432		
* Z0056610	STORM SEWER (WATER MAIN REQUIREMENTS) 15 INCH	FOOT	64			64		
* Z0056614	STORM SEWER (WATER MAIN REQUIREMENTS) 21 INCH	FOOT	115			115		
* Z0056626	STORM SEWER (WATER MAIN REQUIREMENTS) 48 INCH	FOOT	184			184		
* Z0057200	SANITARY SEWER 15"	FOOT	77					77
* Z0062456	TEMPORARY PAVEMENT	SQ YD	6911			6911		
** Z0064800	SELECTIVE CLEARING	UNIT	22			22		
* Z0073510	TEMPORARY TRAFFIC SIGNAL TIMING	EACH	2				2	
Ø Z0076600	TRAINEES	HOUR	2000			2000		
Ø Z0076604	TRAINEES TRAINING PROGRAM GRADUATE	HOUR	2000			2000		
#** X0327367	STEEL CASING PIPE, BORED AND JACKED, 24"	FOOT	377					377
** X2010122	TREE ROOT PRUNING, ROOT ENHANCER	GALLON	4.0			4		

\* DENOTES SPECIAL PROVISION \*\*DENOTES SPECIALTY ITEM \*\*\* DENOTES SPECIAL PROVISION AND SPECIALTY ITEM # CITY OF ELGIN

REVISED SHEET 6/6/2023 Ø 0042

3/24/2023 8:26:01 AM P:\projects\1600018\164\DISCIPLINE\Working\Sheets\01-General\01\_62G41\_ah1\_S0226.dgn



DESIGNED -	REVISED -
DRAWN -	REVISED -
CHECKED -	REVISED -
DATE - 03/24/2023	REVISED -

STATE OF ILLINOIS  
DEPARTMENT OF TRANSPORTATION

SUMMARY OF QUANTITIES

SCALE: NONE SHEET 26 OF 26 SHEETS STA. TO STA.

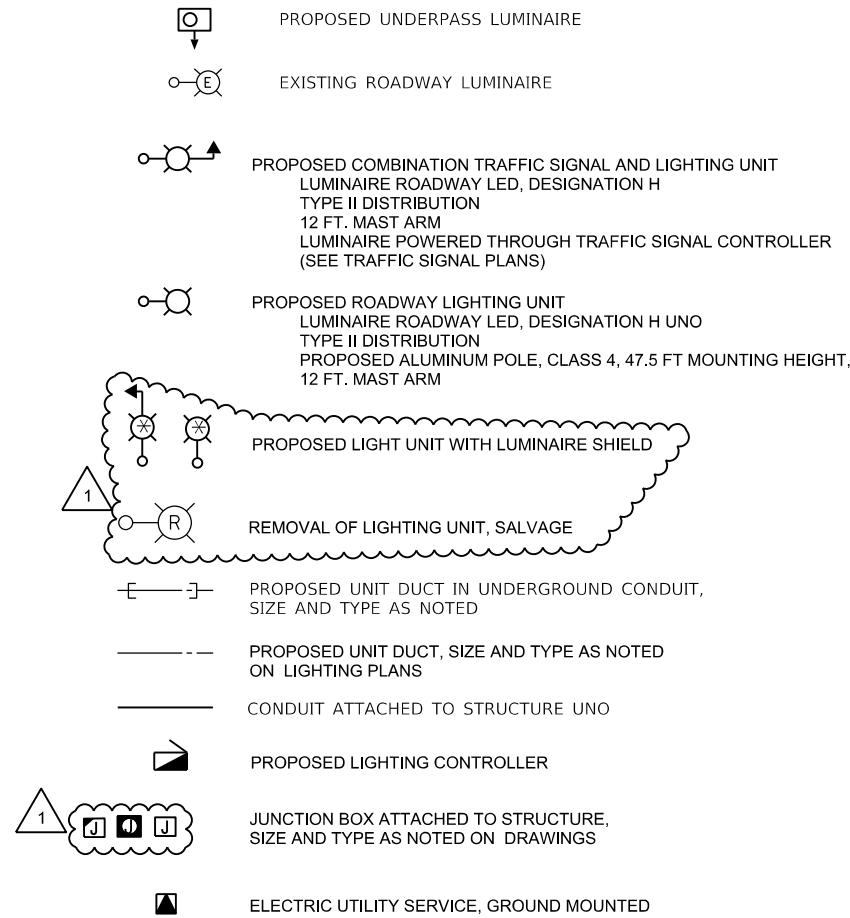
F.A.P. RTE.	SECTION	COUNTY	TOTAL SHEETS	SHEET NO.
345A	NHPP-8HB-2	KANE	359	29
ILLINOIS FED. AID PROJECT			CONTRACT NO. 62G41	

## BILL OF MATERIALS

### LIGHTING GENERAL NOTES

1. THE ELECTRICAL WORK SHALL BE PERFORMED IN ACCORDANCE WITH THE LATEST CODES, STANDARDS AND THE IDOT STANDARD SPECIFICATIONS FOR ROAD AND BRIDGE CONSTRUCTION, THE SUPPLEMENTAL SPECIFICATIONS AND RECURRING SPECIAL PROVISIONS, LATEST EDITIONS.
2. THE CONTRACTOR SHALL CONTACT THE CITY OF ELGIN AND THE IDOT DISTRICT ONE ELECTRICAL MAINTENANCE CONTRACTOR TO LOCATE ELECTRICAL EQUIPMENT AND UNDERGROUND CABLES.
3. IT SHALL BE THE CONTRACTOR'S RESPONSIBILITY TO VERIFY ALL DIMENSIONS AND CONDITIONS IN THE FIELD PRIOR TO ORDERING MATERIALS AND BEGINNING CONSTRUCTION.
4. IT SHALL BE THE CONTRACTOR'S RESPONSIBILITY TO MARK THE PROPOSED LOCATIONS OF ALL LIGHT POLES AND LIGHTING CONTROLLERS AND FOR EXAMINATION AND CONFIRMATION WITH THE RESIDENT ENGINEER.
5. THE CONTRACTOR SHALL VERIFY ALL UTILITY LOCATIONS PRIOR TO AUGURING FOR LIGHT POLE FOUNDATIONS. THE EXACT LOCATIONS FOR ALL ITEMS SHALL BE CONFIRMED WITH THE RESIDENT ENGINEER PRIOR TO STARTING WORK.
6. THE CONTRACTOR SHALL BE RESPONSIBLE FOR THE ESTABLISHMENT OF FINISHED GRADE. THE RESIDENT ENGINEER MAY ASSIST THE CONTRACTOR, AS APPLICABLE. BUT THE RESPONSIBILITY FOR COORDINATING THE FINISHED GRADE ELEVATION WITH THE TOP OF FOUNDATION HEIGHTS AND THE LIGHT SHALL REMAIN WITH THE CONTRACTOR.
7. NO POLES SHALL BE ERECTED UNTIL THE RESPECTIVE FOUNDATIONS HAVE CURED, AS APPROVED BY THE ENGINEER.
8. CONDUIT AND UNIT DUCT MUST BE POSITIONED IN THE FIELD TO AVOID CONFLICT WITH TREES, BUSHES, DRAINS, OTHER UTILITIES AND LANDSCAPING.
9. THE CABLE TRENCH SHALL BE BACKFILLED AND FIRMLY COMPACTED BEFORE ANY LIGHT STANDARD IS ERECTED.
10. ANY DAMAGE TO PAVEMENT, SIDEWALK, CURB OR ANY OTHER SURFACES NOT SPECIFICALLY TO BE REMOVED AND REPLACED SHALL BE REPAIRED OR REPLACED BY THE CONTRACTOR AT NO ADDITIONAL COST AND REPLACEMENT SHALL MEET THE APPROVAL OF THE ENGINEER.
11. COORDINATE WITH TRAFFIC SIGNAL PLANS FOR EXACT LOCATIONS OF COMBINATION POLES, COMBINATION POLES, MAST ARM, AND WIRING FOR THE COMBINATION LIGHTING WILL BE PAID FOR UNDER TRAFFIC SIGNAL PAY ITEMS.
12. OFFSET CALL OFF FOR PROPOSED LIGHT POLES ARE FROM THE EDGE OF TRAVELED PAVEMENT (EOP).
13. LIGHT POLE IDENTIFICATION LABEL SHALL BE PROVIDED AS PER ARTICLE 1069.06 TO THE PROPOSED LIGHT POLE.
14. ALL UNDERGROUND UNIT DUCT SHALL BE 30 INCHES MINIMUM BELOW GRADE PER IDOT SECTION 810. UNIT DUCT MUST BE POSITIONED IN THE FIELD TO AVOID CONFLICT WITH UNDERDRAINS AND UNDERGROUND UTILITIES.
15. FOR COMED SERVICE, CONTACT: VERA JACKSON (224)-276-1466, VERA.JACKSON@COMED.COM, AT COMED.

### LEGEND



### ABBREVIATIONS

ABBREVIATION	DESCRIPTION
AC	AERIAL CABLE
ATC	ATTACHED TO STRUCTURE
BOC	BACK OF CURB
CKT	CIRCUIT
DIA	DIAMETER
EIS	EMBEDDED IN STRUCTURE
EOP	EDGE OF PAVEMENT
FOC	FACE OF CURB
GND	GROUND
GSC	GALVANIZED STEEL CONDUIT
JB	JUNCTION BOX
LED	LIGHT EMITTING DIODE
MA	MAST ARM
MH	MOUNTING HEIGHT
NO. #	NUMBER
P	PROPOSED
PVC	POLYVINYL CHLORIDE
PVCC RGC	PVC COATED RIGID GALVANIZED CONDUIT
R	EXISTING UNIT TO BE REMOVED
RR	EXISTING UNIT TO BE REMOVED AND RELOCATED
RGC	RIGID GALVANIZED CONDUIT
SS	STAINLESS STEEL
STA	STATION
TEMP	TEMPORARY
T/F	TOP OF FOUNDATION
UD	UNIT DUCT
UNO	UNLESS NOTED OTHERWISE
UGC, GS	UNDERGROUND CONDUIT, GALVANIZED STEEL
WP	WOOD POLE

### IDOT STANDARD DETAILS

DETAIL NUMBER	DETAIL NAME
BE-215	LIGHTING CONTROLLER, SINGLE DOOR
BE-240	COMBINATION LIGHTING, TRAFFIC SIGNAL SCHEMATIC
BE-301	LIGHT POLE FOUNDATION 40' - 47 1/2' M.H. 15" BOLT CIRCLE
BE-310	LIGHT POLE FOUNDATION OFFSET 40' - 47.5' MH 15" BOLT CIRCLE
BE-400	ALUMINUM LIGHT POLE 47.5' MOUNTING HEIGHT
BE-701	LUMINAIRE SAFETY CABLE ASSEMBLY
BE-702	MISCELLANEOUS ELECTRICAL DETAILS, SHEET A
BE-901	SUSPENDED MOUNT LED UNDERPASS LUMINAIRE INSTALLATION DETAILS

### IDOT STANDARD DETAIL NOTES

1. DEFER TO INFORMATION INDICATED ON DESIGN DRAWINGS WHERE DISCREPANCIES EXIST AMONGST DETAILS AND INFORMATION ON DRAWINGS.

ELECTRIC SERVICE INSTALLATION	EACH	1
ELECTRIC UTILITY SERVICE CONNECTION	L SUM	2
UNDERGROUND CONDUIT, GALVANIZED STEEL, 3" DIA.	FOOT	1,385
CONDUIT ATTACHED TO STRUCTURE, 1" DIA., PVC COATED GALVANIZED STEEL	FOOT	598
CONDUIT ATTACHED TO STRUCTURE, 3" DIA., PVC COATED GALVANIZED STEEL	FOOT	16
JUNCTION BOX, STAINLESS STEEL, ATTACHED TO STRUCTURE, 6" X 6" X 4"	EACH	6
JUNCTION BOX, STAINLESS STEEL, ATTACHED TO STRUCTURE, 12" X 10" X 6"	EACH	6
JUNCTION BOX, STAINLESS STEEL, ATTACHED TO STRUCTURE, 18" X 18" X 8"	EACH	2
UNIT DUCT, 600V, 3-1C NO.6, 1/C NO.8 GROUND, (XLP-TYPE USE), 1 1/4" DIA. POLYETHYLENE	FOOT	7,857
ELECTRIC CABLE IN CONDUIT, 600V (XLP-TYPE USE) 1/C NO. 10	FOOT	2,500
ELECTRIC CABLE IN CONDUIT, 600V (XLP-TYPE USE) 3-1/C NO. 2	FOOT	40
LUMINAIRE, LED, ROADWAY, OUTPUT DESIGNATION H	EACH	39
LUMINAIRE, LED, UNDERPASS, SUSPENDED, OUTPUT DESIGNATION D	EACH	6
LIGHTING CONTROLLER, BASE MOUNTED, 480VOLT, 100AMP	EACH	1
LIGHT POLE, ALUMINUM, 47.5 FT. M.H., 12 FT. MAST ARM	EACH	37
LIGHT POLE, ALUMINUM, 47.5 FT. M.H., 2-12 FT. MAST ARMS	EACH	1
LIGHT POLE FOUNDATION, 24" DIAMETER	FOOT	468
BREAKAWAY DEVICE, TRANSFORMER BASE, 15 INCH BOLT CIRCLE	EACH	38
REMOVAL OF LIGHTING UNIT, SALVAGE	EACH	9
REMOVAL OF POLE FOUNDATION	EACH	9
REMOVAL OF LIGHTING CONTROLLER	EACH	1
REMOVAL OF ELECTRIC SERVICE INSTALLATION	EACH	1
REMOVAL OF LIGHTING CONTROLLER FOUNDATION	EACH	1
LIGHT POLE FOUNDATION, 24" DIAMETER, OFFSET	FOOT	26
LUMINAIRE SHIELD	EACH	15
LUMINAIRE SAFETY CABLE ASSEMBLY	EACH	39



5/30/2023 4:20:33 PM P:\Projects\1800018184\DISCIPLINE\CKM\Working\Sheets\12-Lighting\01\_52C41\_sht\_Light\_Gen\_Note.dgn



DESIGNED - CG	REVISED - 05/25/2023
DRAWN - DR	REVISED -
CHECKED - BG	REVISED -
DATE - 03/24/2023	REVISED -

**STATE OF ILLINOIS  
DEPARTMENT OF TRANSPORTATION**

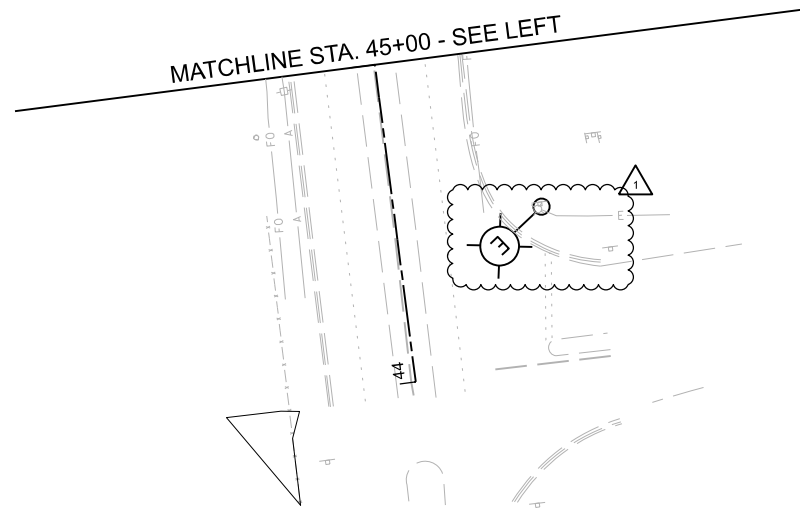
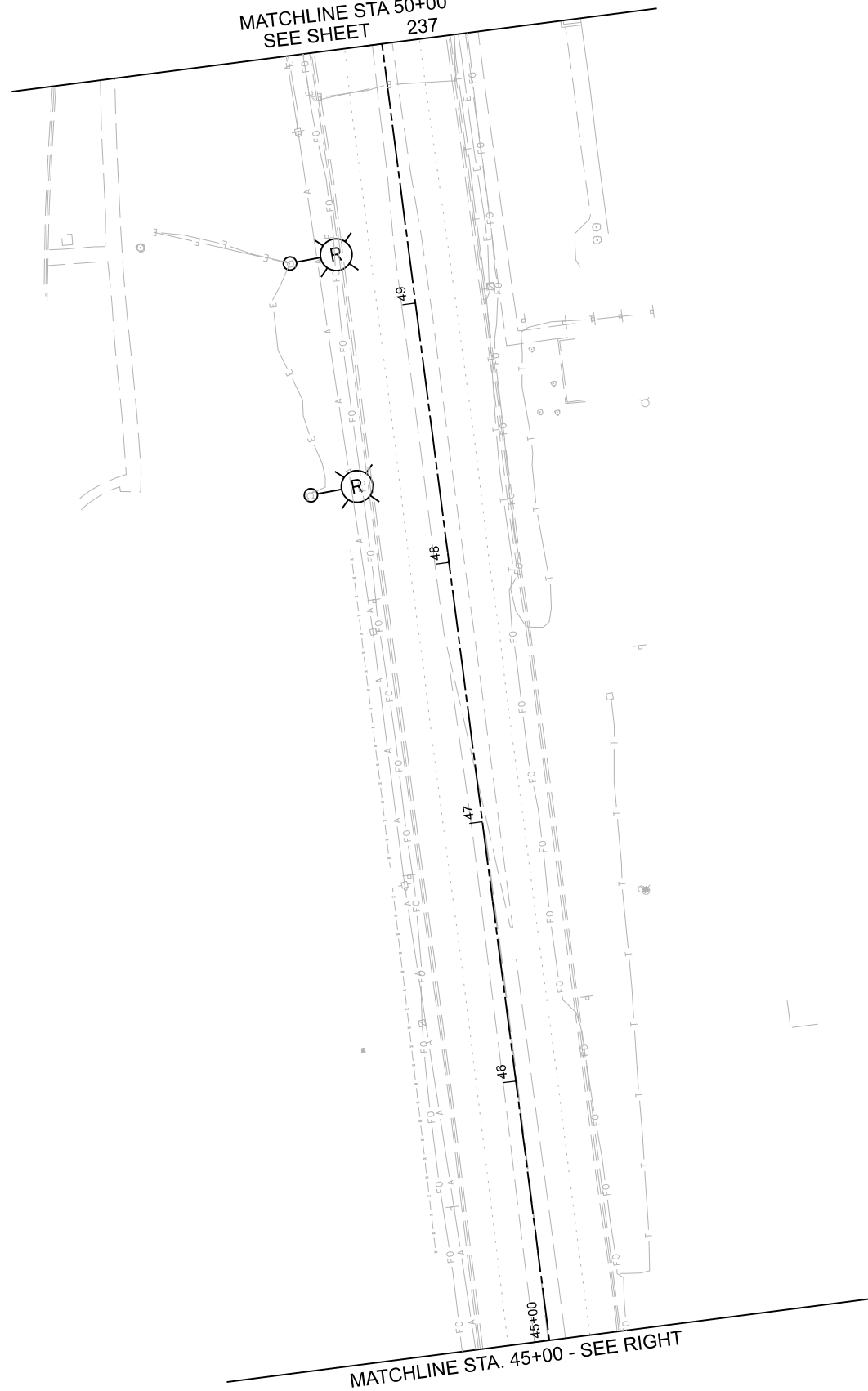
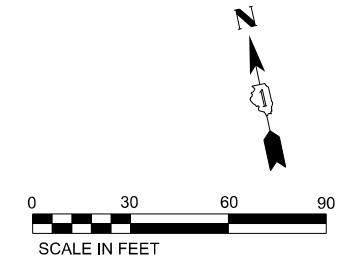
<b>US 20 (LAKE ST.) AT IL 31 (STATE ST.) LIGHTING GENERAL NOTES AND DETAILS</b>	
SCALE: NONE	SHEET 1 OF 8 SHEETS STA. 0 TO STA. 0

F.A.P. RTE.	SECTION	COUNTY	TOTAL SHEETS	SHEET NO.
345	8HB-2	KANE	359	235
CONTRACT NO. 62G41				
ILLINOIS FED. AID PROJECT				

1 REVISED - 05/25/2023



MATCHLINE STA 50+00  
SEE SHEET 237



**LEGEND**

EXISTING LIGHTING UNIT TO BE REMOVED

REVISED - 05/25/2023

5/23/2023 4:02:39 PM P:\Projects\1800018184\DISCIPLINE\CKM\Working\Sheets\12-Jplntg\01\_62G41\_sht\_DEMO\_Light\CL.dgn



DESIGNED - CG	REVISED - 05/25/2023
DRAWN - DR	REVISED -
CHECKED - BF	REVISED -
DATE - 03/24/2023	REVISED -

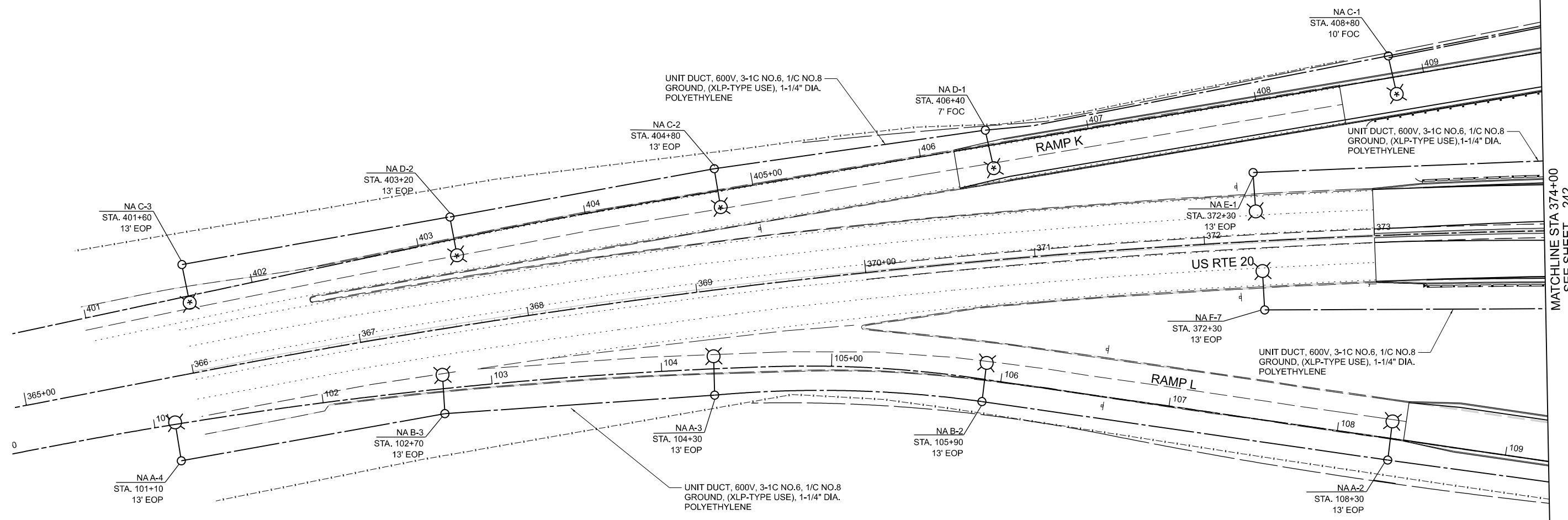
PLLOT SCALE = 60.0000' / in.
PLLOT DATE = 5/23/2023

**STATE OF ILLINOIS  
DEPARTMENT OF TRANSPORTATION**

**PROPOSED REMOVAL LIGHTING PLAN**

SCALE: SHEET 4 OF 5 SHEETS STA. 45+00 TO STA. 50+00

F.A.U. RTE.	SECTION	COUNTY	TOTAL SHEETS	SHEET NO.
345A	8HB-2	KANE	359	239
CONTRACT NO. 62G41				
ILLINOIS FED. AID PROJECT				



MATCHLINE STA 374+00  
SEE SHEET 242

REVISED ENTIRE SHEET - 05/25/2023

5/25/2023 2:27:50 PM  
P:\p\2023\345A\814\SCHEMATIC\CHN\345A\_SHEET241.dwg



DESIGNED - CG	REVISOR - 05/25/2023
DRAWN - DR	REVISIONS -
CHECKED - BF	REVISIONS -
DATE - 03/24/2023	REVISIONS -

PLLOT SCALE = 62.3275' / in.
PLLOT DATE = 5/25/2023

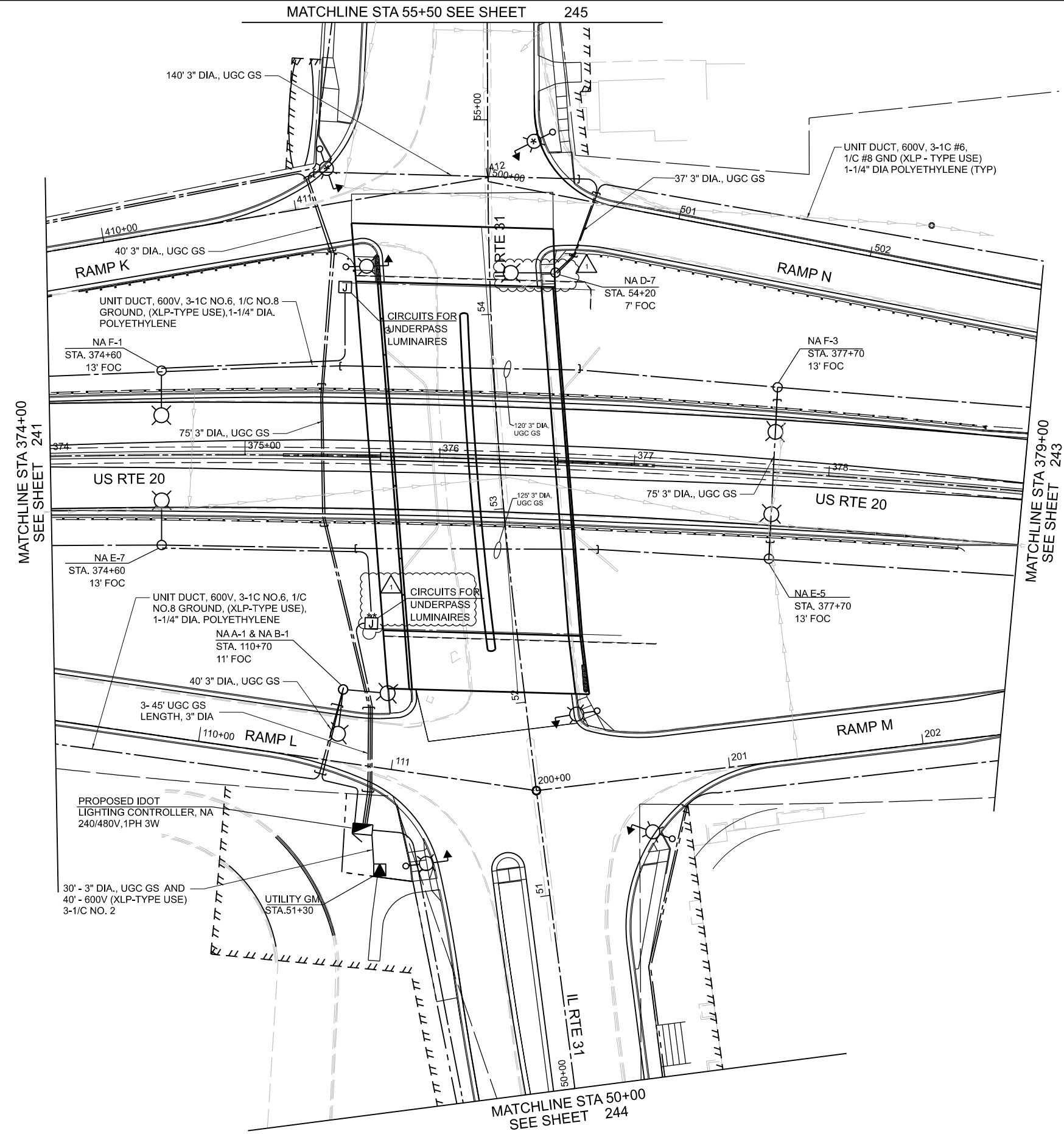
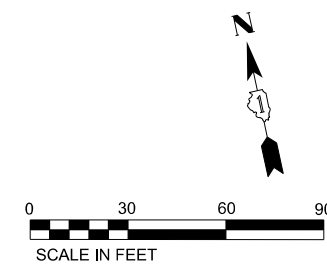
**STATE OF ILLINOIS  
DEPARTMENT OF TRANSPORTATION**

**PROPOSED LIGHTING PLAN**

SCALE: SHEET 2 OF 8 SHEETS STA. 365+00 TO STA. 374+00

F.A.U. RTE.	SECTION	COUNTY	TOTAL SHEETS	SHEET NO.
345A	8HB-2	KANE	359	241
CONTRACT NO. 62G41				
ILLINOIS FED. AID PROJECT				

MATCHLINE STA 55+50 SEE SHEET 245



**GENERAL NOTES**

- A. REFER TO TRAFFIC SIGNAL PLANS FOR CIRCUITRY ASSOCIATED WITH COMBINATION TRAFFIC SIGNAL POLES
- B. RIGID GALVANIZED STEEL (RGS) CONDUIT WITH THREADED COUPLINGS SHALL BE INSTALLED UNDER PAVEMENT AND SHALL EXTEND NOTLESS THAN 2 FEET ON EITHER SIDE OF THE CROSSING
- C. FOR EXACT LOCATION OF COMBINATION POLES SEE TRAFFIC SIGNAL PLANS. COMBINATION POLE AND LIGHTING MAST ARM ARE PART OF THE TRAFFIC SIGNAL PAY ITEM.
- D. REFER TO UNDERPASS DRAWINGS FOR ADDITIONAL INFORMATION (\*\*).

**KEYED NOTES**

- 1. COORDINATE EXACT ROUTING AND SERVICE REQUIREMENTS OF NEW ELECTRICAL SERVICE WITH COMED.

5/25/2023 4:04:00 PM P:\Projects\18860\1886018\1886018.dwg



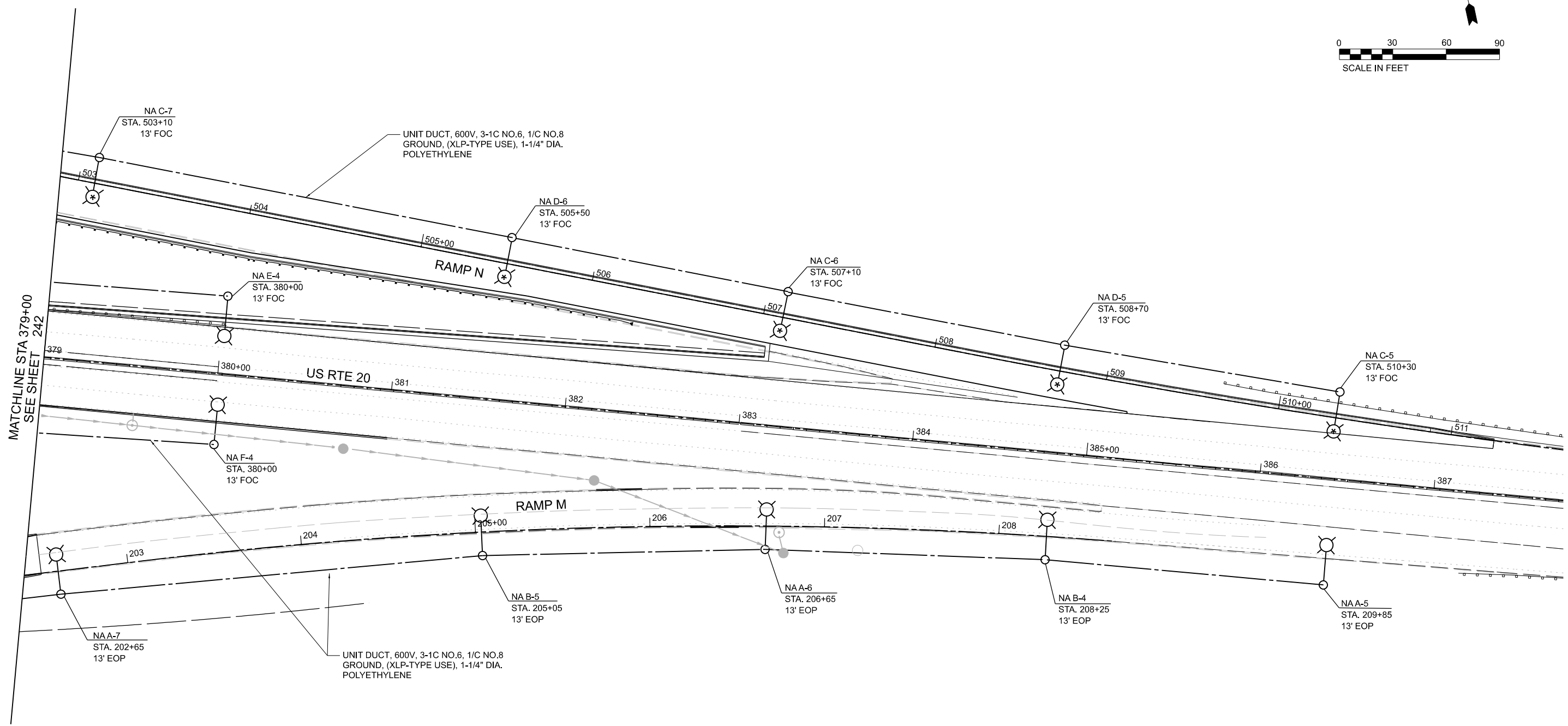
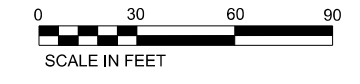
DESIGNED - CG	REVISED - 05/25/2023
DRAWN - DR	REVISED -
CHECKED - BF	REVISED -
DATE - 03/24/2023	REVISED -

**STATE OF ILLINOIS  
DEPARTMENT OF TRANSPORTATION**

**PROPOSED LIGHTING PLAN**

SCALE: SHEET 3 OF 8 SHEETS STA. 374+00 TO STA. 379+00

REVISED ENTIRE SHEET - 05/25/2023				
F.A.U. RTE.	SECTION	COUNTY	TOTAL SHEETS	SHEET NO.
345A	8HB-2	KANE	359	242
CONTRACT NO. 62G41				
ILLINOIS FED. AID PROJECT				



MATCHLINE STA 379+00  
SEE SHEET 242

REVIS 05/25/2023



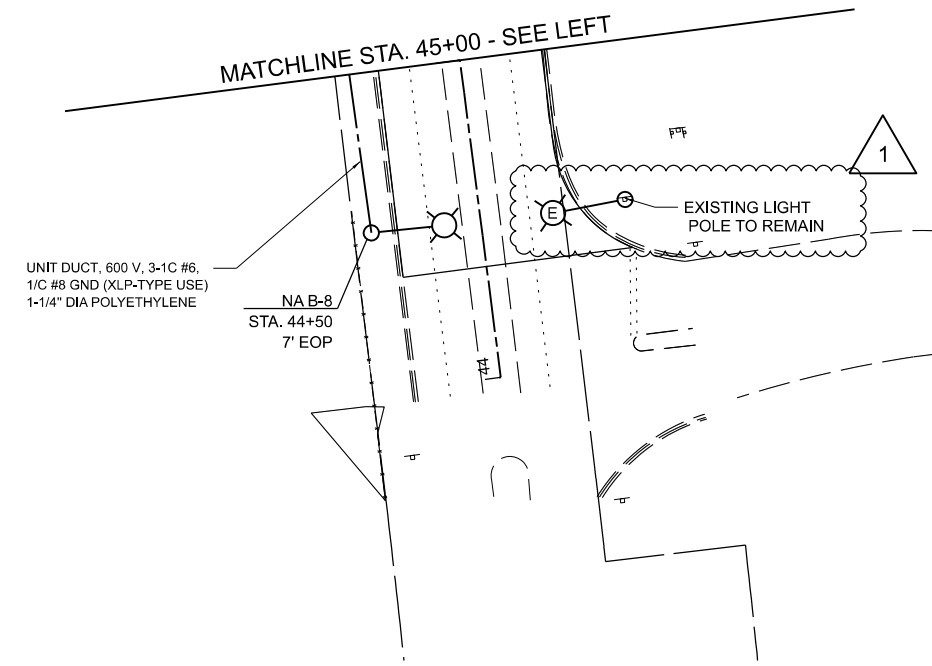
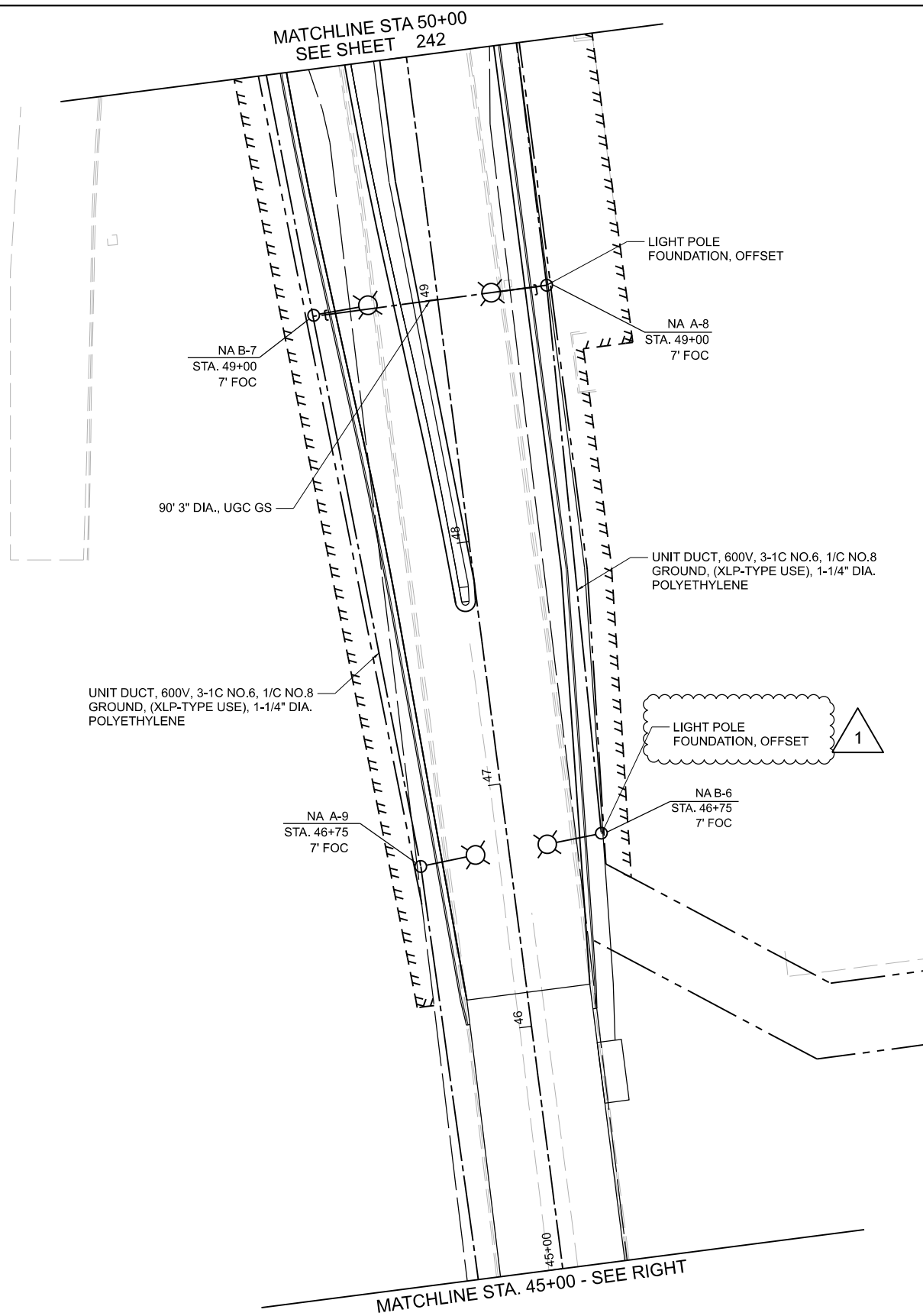
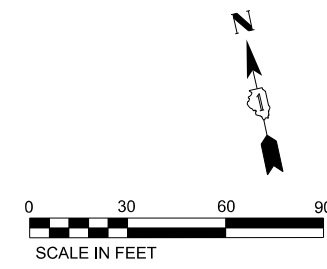
DESIGNED - CG	REVISED - 05/25/2023
DRAWN - DR	REVISED -
CHECKED - BF	REVISED -
DATE - 03/24/2023	REVISED -

**STATE OF ILLINOIS  
DEPARTMENT OF TRANSPORTATION**

**PROPOSED LIGHTING PLAN**

SCALE: SHEET 4 OF 8 SHEETS STA. 379+00 TO STA. 387+00

F.A.U. RTE. 345A	SECTION 8HB-2	COUNTY KANE	TOTAL SHEETS 359	SHEET NO. 243
CONTRACT NO. 62G41				
ILLINOIS FED. AID PROJECT				



5/23/2023 4:02:42 PM  
 P:\Projects\1800018184\DISCIPLINE\CKM\Working\Sheets\12-Jointing\01\_62G41\_sht\_Light04.dgn



DESIGNED - CG	REVISOR - 05/25/2023
DRAWN - DR	REVISION -
CHECKED - BF	REVISION -
DATE - 03/24/2023	REVISION -

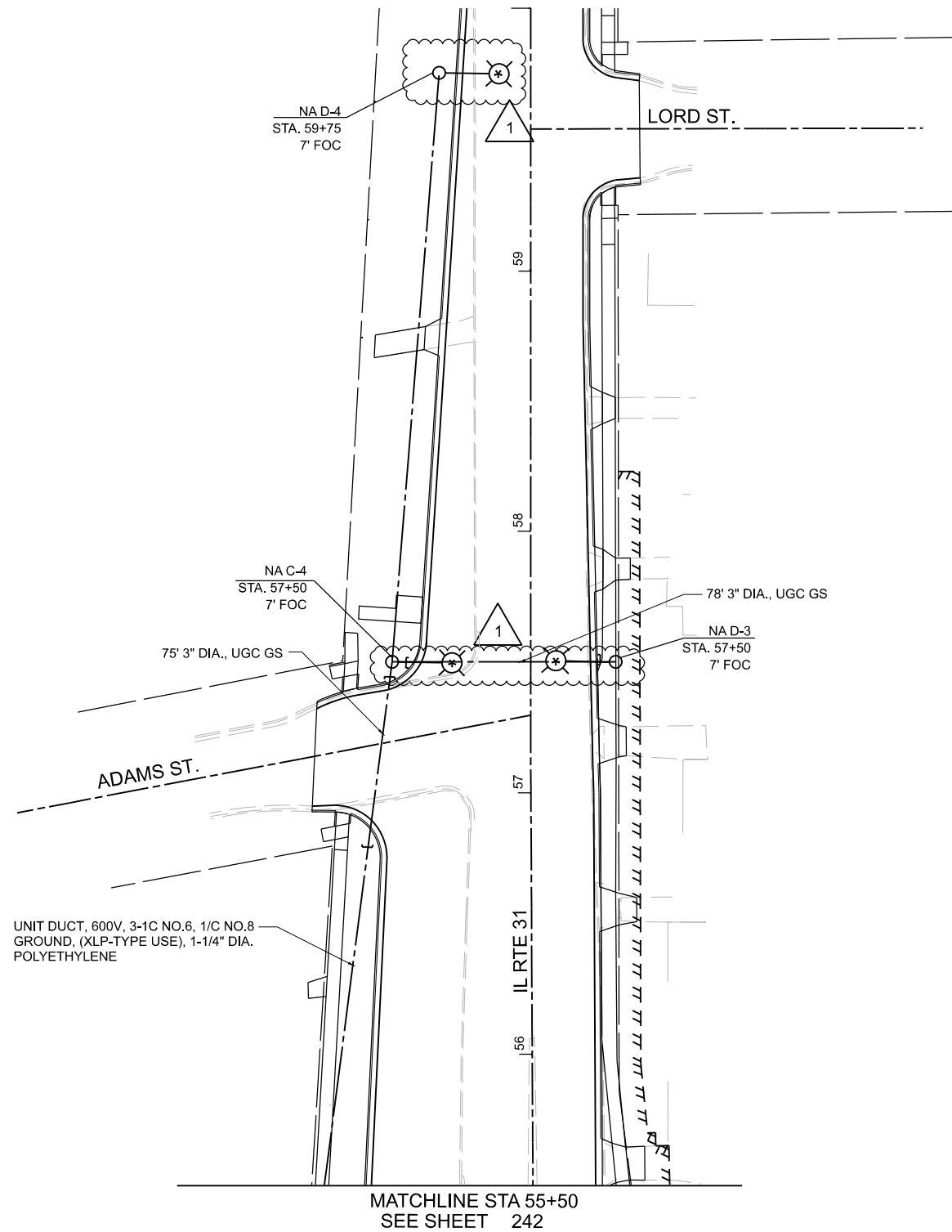
DESIGNED - CG	REVISOR - 05/25/2023
DRAWN - DR	REVISION -
CHECKED - BF	REVISION -
DATE - 03/24/2023	REVISION -

**STATE OF ILLINOIS**  
**DEPARTMENT OF TRANSPORTATION**

**PROPOSED LIGHTING PLAN**  
 SCALE: SHEET 5 OF 8 SHEETS STA. 45+00 TO STA. 50+00

F.A.U. RTE.	SECTION	COUNTY	TOTAL SHEETS	SHEET NO.
345A	8HB-2	KANE	359	244
CONTRACT NO. 62G41				
ILLINOIS FED. AID PROJECT				

REVISION 1 - 05/25/2023



△ REVISED - 05/25/2023

5/23/2023 4:02:42 PM P:\Projects\1800018184\DISCIPLINE\CKM\Working\Sheets\12-Lighting\01\_62G41\_sht\_Lighting05.dgn



DESIGNED - CG	REVISED - 05/25/2023 △
DRAWN - DR	REVISED -
CHECKED - BF	REVISED -
DATE - 03/24/2023	REVISED -

**STATE OF ILLINOIS  
DEPARTMENT OF TRANSPORTATION**

**PROPOSED LIGHTING PLAN**


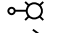



SCALE: SHEET 6 OF 8 SHEETS STA. 55+50 TO STA. 60+00

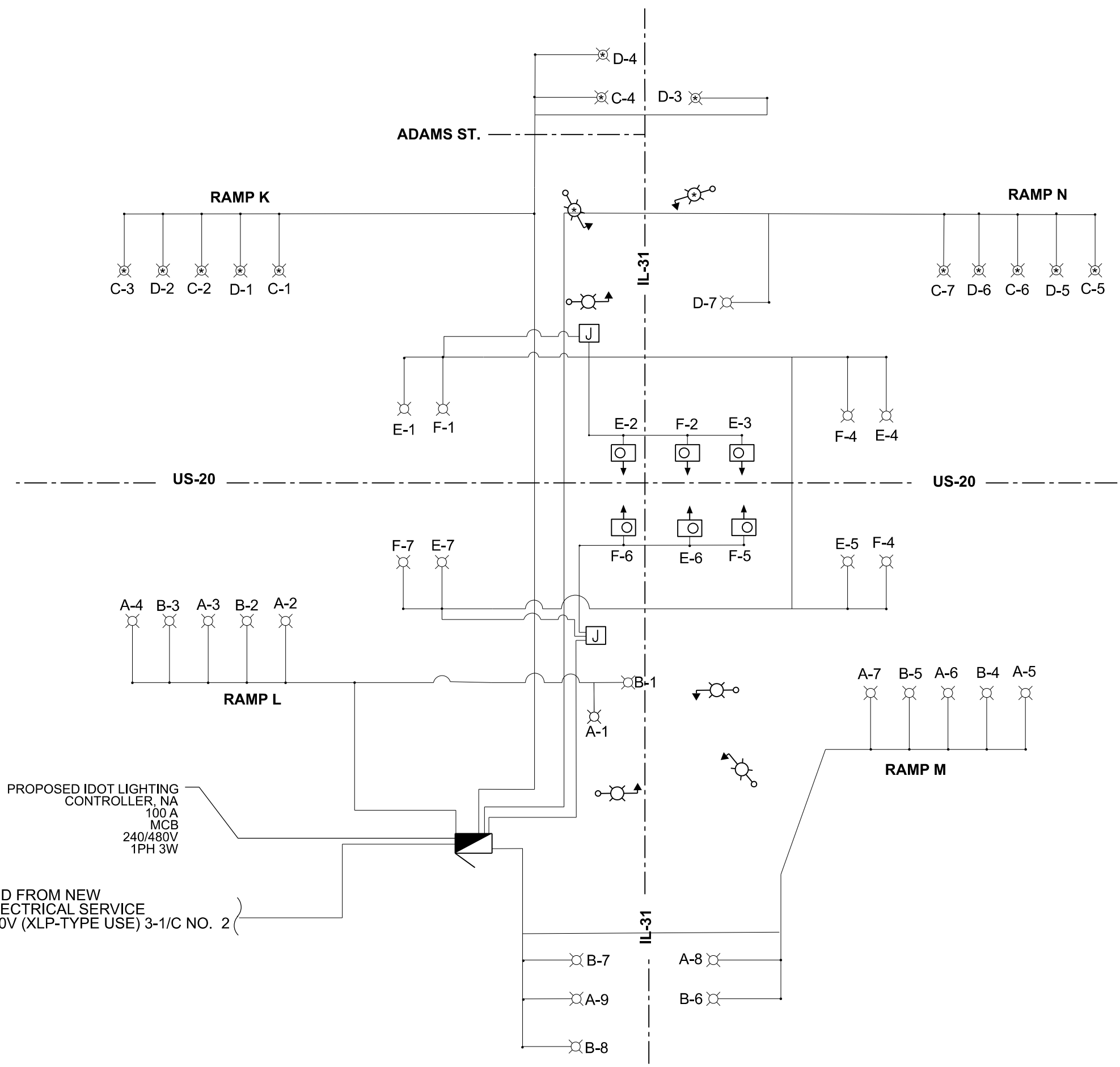
F.A.U. RTE.	SECTION	COUNTY	TOTAL SHEETS	SHEET NO.
345A	8HB-2	KANE	359	245
CONTRACT NO. 62G41				
ILLINOIS FED. AID PROJECT				





**LEGEND**

-  PROPOSED LED UNDERPASS LUMINAIRE
-  PROPOSED LED ROADWAY LUMINAIRE  
OUTPUT DESIGNATION G UNO
-  PROPOSED LIGHTING CONTROLLER
-  PROPOSED COMBINATION LUMINAIRE  
ROADWAY OUTPUT DESIGNATION H
-  PROPOSED LUMINAIRE WITH  
LUMINAIRE SHIELD



LOAD TABLE							
LIGHTING CONTROLLER "NA", 240/480V, 1-Φ, 3- WIRE							
RED PHASE	NO. LUM.*	AMPS	WATTS	BLACK PHASE	NO. LUM.*	AMPS	WATTS
A	9-222W	8.4	1998	B	8-222W	7.4	1776
C	7-222W	6.5	1554	D	7-222W	6.5	1554
E	4-222W	3.7	888	F	4-222W	3.7	888
UNDERPASS							
E	3-78W	1.0	234	F	3-78W	1.0	234
TOTAL		19.6	4674	TOTAL		18.6	4452
TOTAL CONNECTED LOAD CAPACITY (W)				9126			
LED U1 = 78 W, LED F1 = 222 W							

PROPOSED IDOT LIGHTING CONTROLLER, NA  
100 A  
MCB  
240/480V  
1PH 3W

FED FROM NEW ELECTRICAL SERVICE  
600V (XLP-TYPE USE) 3-1/C NO. 2

GENERAL NOTES

1. LETTER ADJACENT TO FIXTURE REPRESENTS THE CIRCUIT NUMBER.

5/25/2023 3:00:08 PM



DESIGNED - CG	REVISED - 05/25/2023
DRAWN - DR	REVISED -
CHECKED - BF	REVISED -
DATE - 03/24/2023	REVISED -

PLLOT SCALE - NOT TO SCALE
PLLOT DATE - 5/25/2023

STATE OF ILLINOIS  
DEPARTMENT OF TRANSPORTATION

US 20 (LAKE ST.) AT IL 31 (STATE ST.)  
PROPOSED SINGLE LINE DIAGRAM

SCALE: SHEET 8 OF 8 SHEETS STA. TO STA.

1 REVISED ENTIRE SHEET - 05/25/2023

F.A.P. RTE.	SECTION	COUNTY	TOTAL SHEETS	SHEET NO.
345	8HB-2	KANE	359	247
CONTRACT NO. 62G41				
ILLINOIS FED. AID PROJECT				

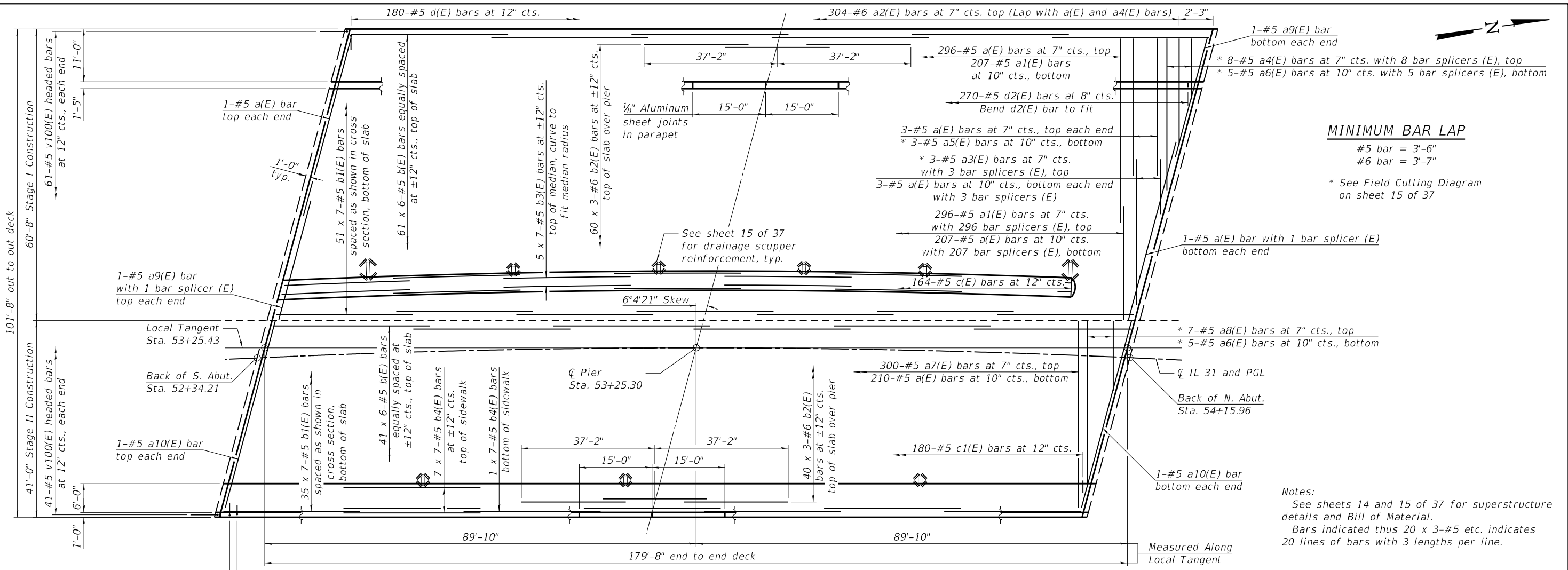
L2006



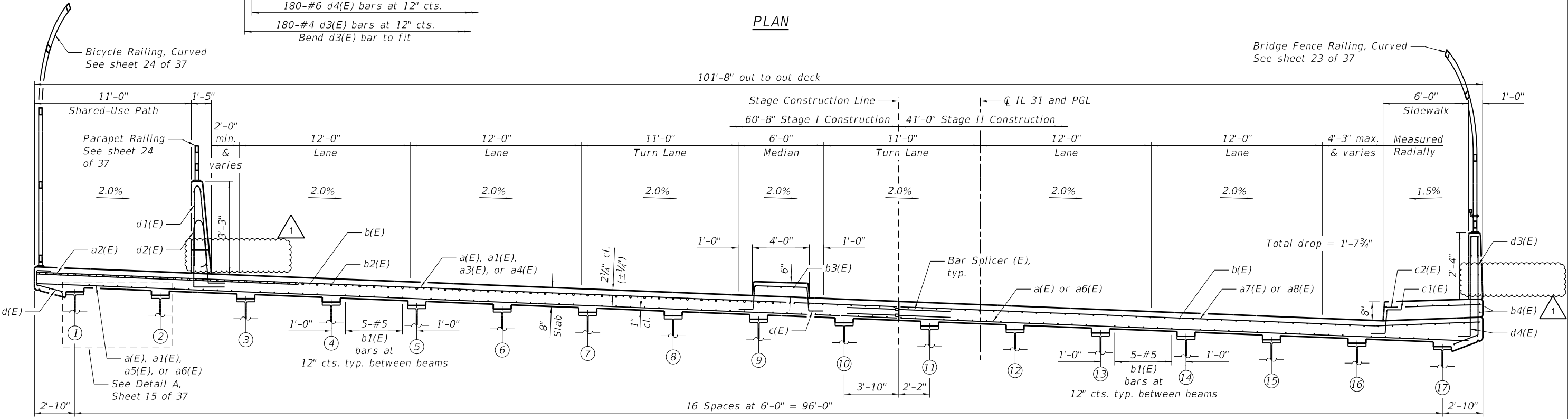








**PLAN**



**CROSS SECTION**  
(Looking North)

5/30/2023 4:17:25 PM  
 P:\Projects\180001818\BIDS\CP\LINE\CHK\Working\Sheets\14-Bridge\01\_62G41\_sht\_deck-01.dwg



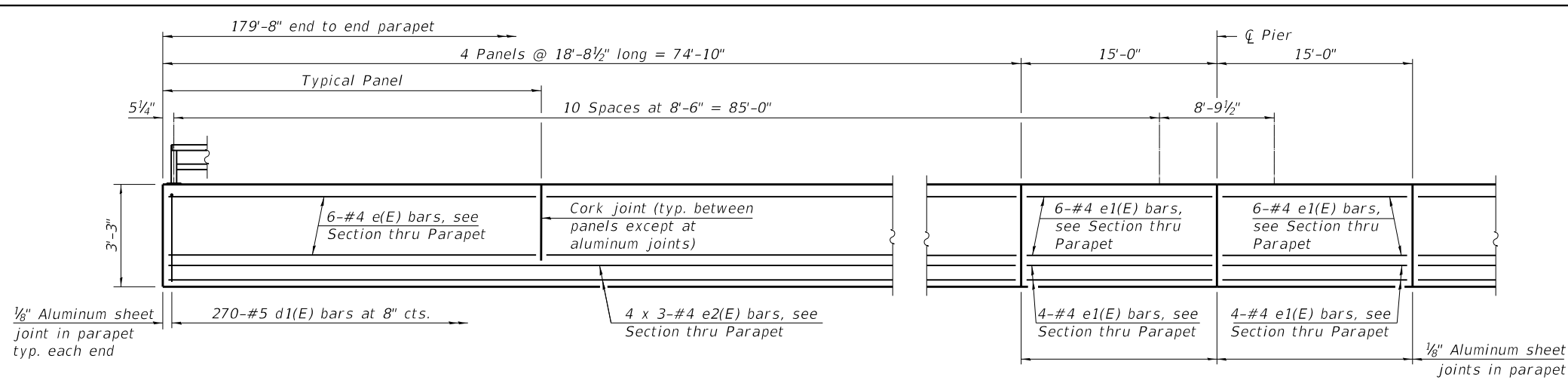
USER NAME =	DESIGNED - CMS	REVISED - 05/25/2023
PLOT SCALE =	DRAWN - CMS	REVISED -
PLOT DATE =	CHECKED - TCG	REVISED -
	DATE - 03/24/2023	REVISED -

**STATE OF ILLINOIS**  
**DEPARTMENT OF TRANSPORTATION**

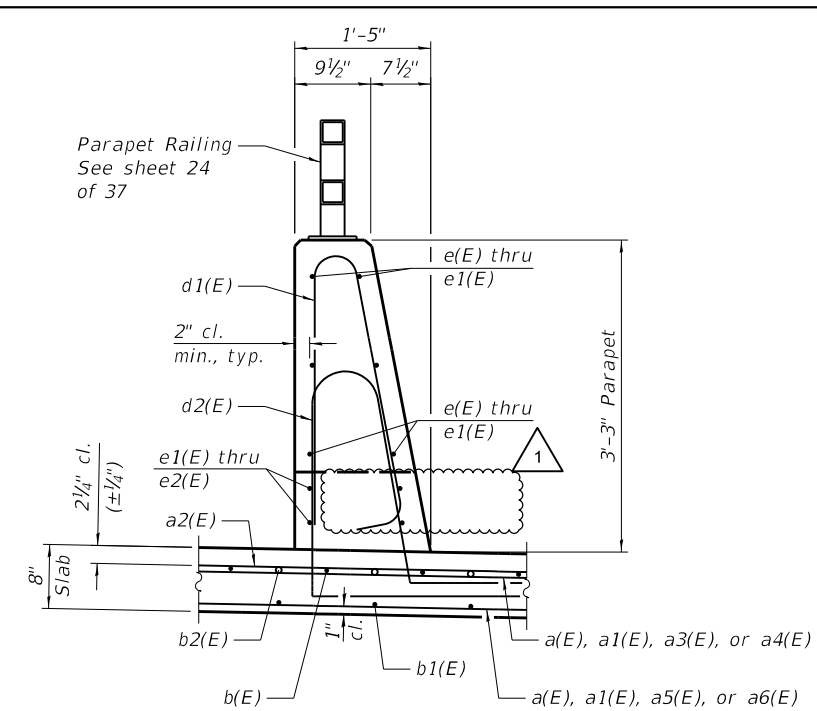
**SUPERSTRUCTURE (PLAN AND CROSS SECTION)**  
**STRUCTURE NO. 045-2106**

SCALE: SHEET 13 OF 37 SHEETS STA. TO STA.

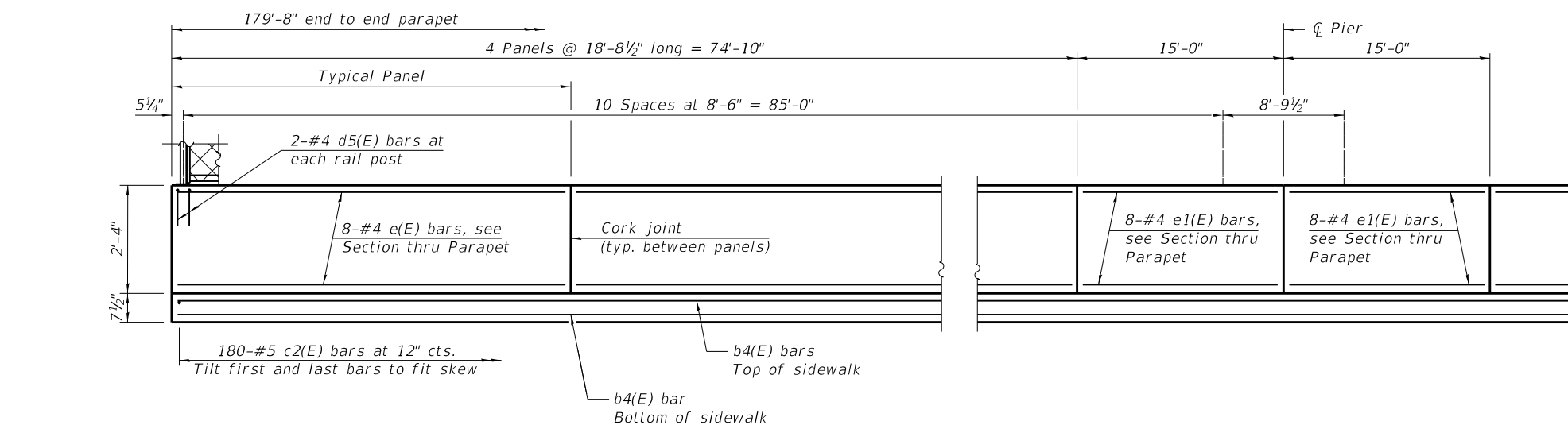
F.A.P. RTE.	SECTION	COUNTY	TOTAL SHEETS	SHEET NO.
345A	8HB-2	KANE	359	270
CONTRACT NO. 62G41				
ILLINOIS FED. AID PROJECT				



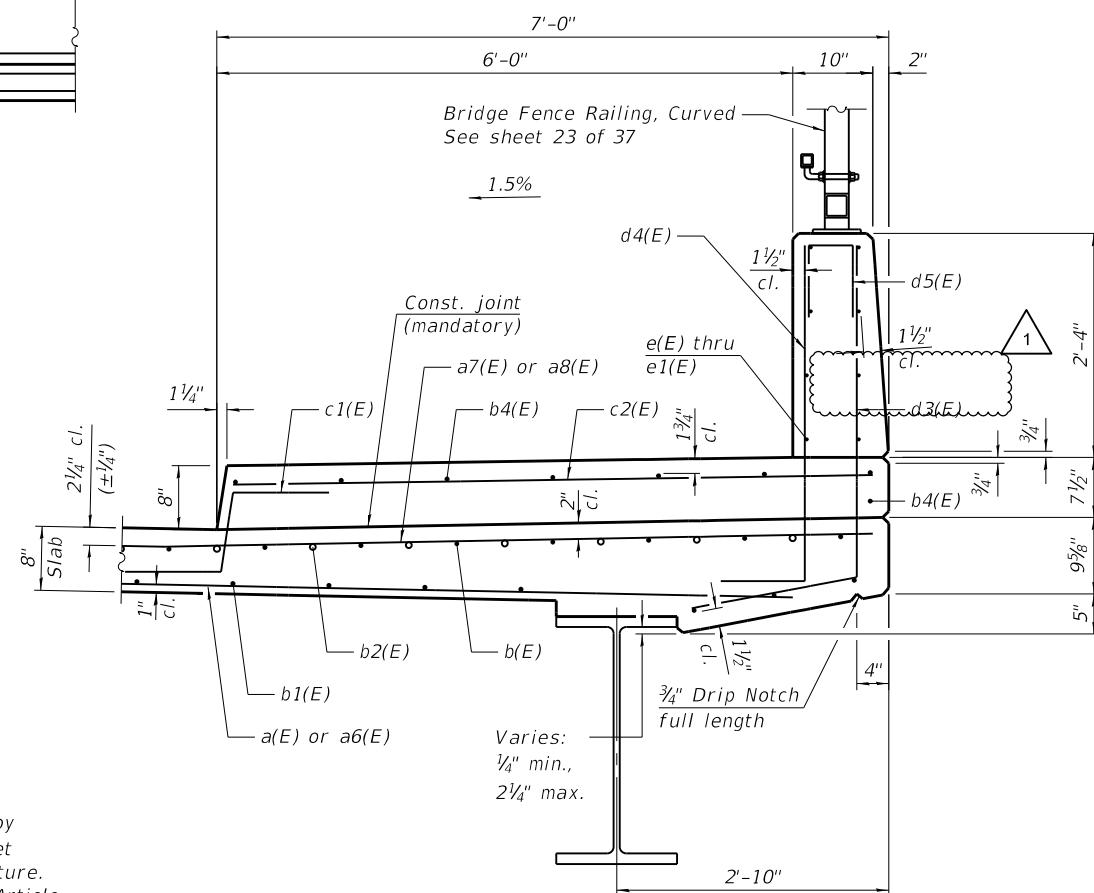
INSIDE ELEVATION OF WEST PARAPET



SECTION THRU WEST PARAPET



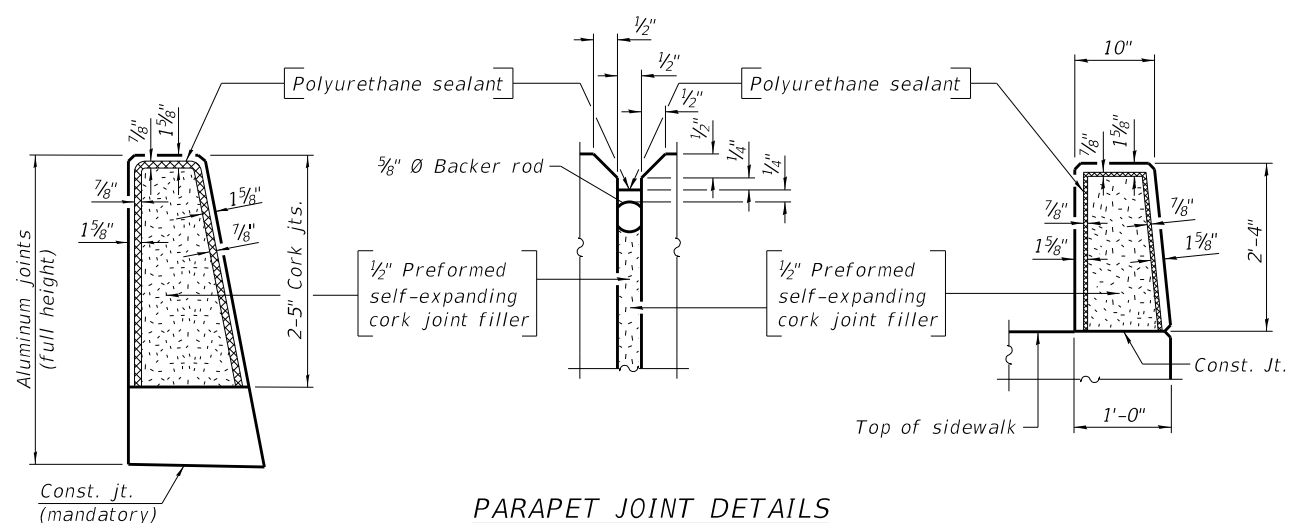
INSIDE ELEVATION OF EAST PARAPET



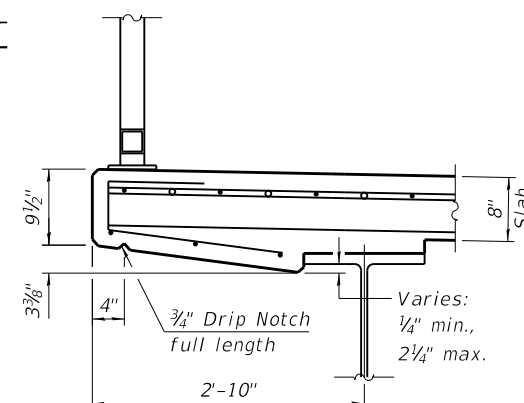
SECTION THRU SIDEWALK AND EAST PARAPET

MINIMUM BAR LAP

#4 bar = 2'-5"  
#5 bar = 3'-6"



PARAPET JOINT DETAILS



SECTION THRU WEST FASCIA

Notes:

The 1/8" aluminum sheet shall be ASTM B 209 alloy 3003-H14 and coated to minimize reaction with wet concrete. Cost included with Concrete Superstructure.  
The polyurethane sealant shall be according to Article 1050.04 of the Std. Spec. and the color shall be gray.  
Headed bars shall conform to ASTM A970 with threaded attachment; Class HA; and reinforcement bars conforming to ASTM A706. Cost included with Reinforcement Bars, Epoxy Coated.

REVISION 1 REVISED - 05/25/2023

5/30/2023 4:17:26 PM P:\Projects\18000181\BIDS\CPL\NECH\Working\Sheets\14-8\BridgD1\_62G41\_sht\_detec-02.dgn



USER NAME =	DESIGNED - CMS	REVISED - 05/25/2023
PLOT SCALE =	DRAWN - CMS	REVISED -
PLOT DATE =	CHECKED - TCG	REVISED -
	DATE - 03/24/2023	REVISED -

STATE OF ILLINOIS  
DEPARTMENT OF TRANSPORTATION

SUPERSTRUCTURE DETAILS 1  
STRUCTURE NO. 045-2106

SCALE: SHEET 14 OF 37 SHEETS STA. TO STA.

F.A.P. RTE.	SECTION	COUNTY	TOTAL SHEETS	SHEET NO.
345A	8HB-2	KANE	359	271
CONTRACT NO. 62G41				
ILLINOIS FED. AID PROJECT				