

STATE OF ILLINOIS  
DEPARTMENT OF TRANSPORTATION  
DIVISION OF HIGHWAYS

**PROPOSED  
HIGHWAY PLANS**

**FAU 2812/PULASKI ROAD  
I-290 (EISENHOWER EXPRESSWAY) TO CERMAK ROAD (22ND AVENUE)  
SECTION: 2020-073-RS  
PROJECT: STP-UN14(788)  
RESURFACING (SMART)  
COOK COUNTY  
C-91-270-20**

FOR INDEX OF SHEETS, SEE SHEET NO. 2

THE PROJECT IS LOCATED IN THE  
CITY OF CHICAGO

F.A.U. RTE.	SECTION	COUNTY	TOTAL SHEETS	SHEET NO.
2812	2020-073-RS	COOK	19	1
FED. ROAD DIST. NO.	ILLINOIS	CONTRACT NO. 62L51		

D -91-472-20

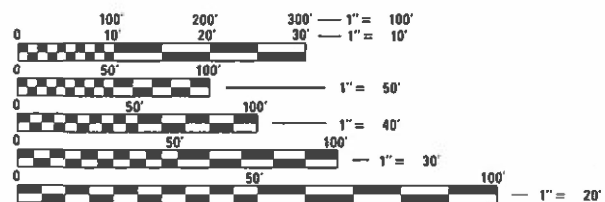


LOCATION OF SECTION INDICATED THUS: —

**TRAFFIC DATA**  
PULASKI RD. (2021) ADT: 15,200  
POSTED SPEED LIMIT = 30 MPH

PROJECT ENDS  
STA. 95+44

**OMISSIONS**  
STA. 22+33 TO STA. 24+63  
STA. 34+16 TO STA. 35+34  
STA. 41+02 TO STA. 41+96  
STA. 67+58 TO STA. 68+78  
STA. 75+33 TO STA. 77+73



FULL SIZE PLANS HAVE BEEN PREPARED USING STANDARD ENGINEERING SCALES. REDUCED SIZED PLANS WILL NOT CONFORM TO STANDARD SCALES. IN MAKING MEASUREMENTS ON REDUCED PLANS, THE ABOVE SCALES MAY BE USED.

C.U.A.N.  
CHICAGO UTILITY ALERT NETWORK  
(312) 744-7000



PROJECT BEGINS  
STA. 15+64

GROSS LENGTH OF PROJECT = 7,980 LINEAL FEET = 1.511 MILE  
NET LENGTH OF PROJECT = 7,178 LINEAL FEET = 1.36 MILE

PROJECT ENGINEER: RODRIGO LEDEZMA (847) 705-4580  
PROJECT MANAGER: J. ALAIN MIDY (847) 221-3056

CONTRACT NO. 62L51

STATE OF ILLINOIS  
DEPARTMENT OF TRANSPORTATION  
DIVISION OF HIGHWAYS

SUBMITTED March 17 2023  
Jose Rios Carr  
REGIONAL ENGINEER

May 12, 2023 [Signature]  
ENGINEER OF DESIGN AND ENVIRONMENT

May 12, 2023 [Signature]  
DIRECTOR OF HIGHWAYS PROJECT IMPLEMENTATION

PRINTED BY THE AUTHORITY  
OF THE STATE OF ILLINOIS

**INDEX OF SHEETS**

SHEET NO.	DESCRIPTION
1	COVER SHEET
2	INDEX OF SHEETS, STANDARDS, AND GENERAL NOTES
3-4	SUMMARY OF QUANTITIES
5-6	TYPICAL SECTIONS PLAN
7-9	ROADWAY & PAVEMENT MARKINGS PLANS
10	DETAILS FOR FRAMES AND LIDS ADJUSTMENT WITH MILLING (BD-08)
11	PAVEMENT PATCHING FOR HMA SURFACED PAVEMENT (BD-22)
12	CURB OR CURB AND GUTTER REMOVAL AND REPLACEMENT (BD-24)
13	BUTT JOINT AND HMA TAPER DETAILS (BD-32)
14	TRAFFIC CONTROL AND PROTECTION FOR SIDE ROADS, INTERSECTIONS, AND DRIVEWAYS (TC-10)
15	TRAFFIC CONTROL AND PROTECTION AT TURN BAYS (TO REMAIN OPEN TO TRAFFIC) (TC-14)
16	ARTERIAL ROAD INFORMATION SIGN (TC-22)
17-19	CITY OF CHICAGO TYPICAL PAVEMENT MARKINGS (TC-24)

**LIST OF STATE STANDARDS**

STANDARD NO.	DESCRIPTION
000001-08	STANDARD SYMBOLS, ABBREVIATIONS AND PATTERNS
442201-03	CLASS C AND D PATCHES
604001-05	FRAME AND LIDS, TYPE 1
606001-08	COMBINATION CONCRETE CURB AND GUTTER
701301-04	LANE CLOSURE, 2L, 2W, SHORT TIME OPERATIONS
701311-03	LANE CLOSURE, 2L, 2W MOVING OPERATIONS - DAY ONLY
701501-06	URBAN LANE CLOSURE, 2L, 2W UNDIVIDED
701606-10	URBAN LANE CLOSURE, MULTILANE 2W WITH MOUNTABLE MEDIAN
701701-10	URBAN LANE CLOSURE, MULTILANE INTERSECTION
701901-08	TRAFFIC CONTROL DEVICES

**CHICAGO NOTES**

- BEFORE STARTING ANY EXCAVATION, THE CONTRACTOR SHALL CALL "C.U.A.N." (CHICAGO UTILITY ALERT NETWORK) AT 312-744-7000 FOR FIELD LOCATIONS OF BURIED ELECTRIC, TELEPHONE AND GAS FACILITIES. (48 HOUR NOTIFICATION IS REQUIRED).
- THE CONTRACTOR SHALL COORDINATE CONSTRUCTION ACTIVITIES WITH UTILITY COMPANIES AND THE CITY OF CHICAGO.
- ALL CATCH BASINS IN THE CITY OF CHICAGO MUST MEET THE DEPARTMENT OF SEWERS' STANDARDS.
- PERMITS FROM THE DEPARTMENT OF SEWERS ARE REQUIRED FOR ALL UNDERGROUND STORM, SANITARY OR COMBINED SEWER SYSTEM CONSTRUCTION, AND FOR RESURFACING WORK INVOLVING ADJUSTMENT OF SEWER STRUCTURES. THE DEPARTMENT OF SEWERS PERMIT MUST BE OBTAINED BY A LICENSED SEWER DRAIN LAYER PRIOR TO START OF CONSTRUCTION.
- PERFORATED LIDS SHALL BE PLACED ON ALL MANHOLES AND CATCH BASINS.
- ALL BROKEN, CRACKED, WORN OR OTHERWISE DAMAGED OR BICYCLE UNSAFE FRAMES AND LIDS ON SEWER STRUCTURES, SHALL BE REPLACED WITH NEW DEPARTMENT OF SEWERS' STANDARDS FRAMES AND LIDS.
- OPEN LID DRAINAGE STRUCTURES SHALL NOT BE CLOSED, COVERED OR OTHERWISE OBSTRUCTED DURING CONSTRUCTION OF THIS ROADWAY WITHOUT THE WRITTEN PERMISSION FROM THE CITY OF CHICAGO.
- CITY OF CHICAGO CASTINGS ARE THE PROPERTY OF THE CITY OF CHICAGO AND THE CONTRACTOR SHALL NOTIFY THE CITY FOR REMOVAL AND DISPOSITION OF THE CASTINGS.

**GENERAL NOTES**

- THE CONTRACTOR SHALL COORDINATE CONSTRUCTION ACTIVITIES WITH UTILITY COMPANIES AND THE CITY OF CHICAGO
- THE CONTRACTOR WILL NOT BE ALLOWED TO SET UP A YARD OR FIELD OFFICE ON STATE PROPERTY WITHOUT WRITTEN PERMISSION FROM THE DEPARTMENT
- WHEN MILLED PAVEMENT IS OPEN TO TRAFFIC THE MAXIMUM GRADE DIFFERENTIAL BETWEEN PASSES OF THE MILLING MACHINE SHALL NOT EXCEED 1 1/2 INCHES (40 MM) WHERE THE SPEED LIMIT IS 45 MPH (45 KM/H) OR LESS AND 1 INCH WHERE THE SPEED LIMIT IS GREATER THAN 45 MPH (45 KM/H). WITH WRITTEN APPROVAL FROM THE ENGINEER. A MAXIMUM GRADE DIFFERENTIAL OF 3 INCHES MAY BE ALLOWED IF THE EDGE OF THE MILLING IS SLOPED A MINIMUM 1:3 (V:H).
- BUTT JOINTS WILL BE INSTALLED AT THE ENDS OF ALL RESURFACING (WHERE RESURFACING MEETS EXISTING PAVEMENT), IN ACCORDANCE WITH THE "BUTT JOINT AND HOT-MIX ASPHALT TAPER DETAILS" SHEET INCLUDED IN THE PLANS, UNLESS OTHERWISE SPECIFIED.
- THE RESIDENT ENGINEER SHALL CONTACT MR. EMAD ALHUSSEINI AREA TRAFFIC FIELD ENGINEER AT EMAD.ALHUSSEINI@ILLINOIS.GOV A MINIMUM OF 2 WEEKS PRIOR TO PLACEMENT OF PERMANENT PAVEMENT MARKINGS.
- THE CONTRACTOR SHALL VERIFY ALL EXISTING PAVEMENT MARKINGS BEFORE MILLING
- DO NOT SCALE PLANS FOR CONSTRUCTION DIMENSIONS
- ALL PAVEMENT PATCHING LOCATIONS WILL BE DETERMINED IN THE FIELD BY THE ENGINEER.

**GENERAL NOTES**

- IT SHALL BE THE CONTRACTOR'S RESPONSIBILITY TO VERIFY ALL DIMENSIONS AND CONDITIONS EXISTING IN THE FIELD PRIOR TO CONSTRUCTION AND ORDERING OF MATERIALS
- THE CONTRACTOR SHALL CONTACT THE DISTRICT ONE TRAFFIC CONTROL SUPERVISOR AT (847)705-4470 A MINIMUM OF 72 HOURS IN ADVANCE OF BEGINNING WORK.
- THE CONTRACTOR SHALL BE REQUIRED TO PROVIDE ACCESS TO ABUTTING PROPERTY AT ALL TIMES DURING THE CONSTRUCTION OF THIS PROJECT.
- BEFORE BEGINNING ANY WORK, THE CONTRACTOR SHALL RETAIN AND RECORD FOR FUTURE REFERENCE, ALL EXISTING PAVEMENT MARKING LINES (AND RAISED REFLECTIVE PAVEMENT MARKERS) IN ORDER THAT THESE LOCATIONS CAN BE RE-ESTABLISHED FOR STRIPING. EXACT LOCATIONS OF ALL PAVEMENT MARKINGS SHALL BE AS DIRECTED BY THE ENGINEER.
- ALL MILLED SURFACES SHALL BE A UNIFORM CROSS SLOPE PER LANE AND FREE OF RIDGES BETWEEN PASSES. ANY DEVIATIONS SHALL BE CORRECTED AT NO COST TO THE DEPARTMENT.
- LOCATION OF COMBINATION CONCRETE CURB AND GUTTER REMOVAL AND REPLACEMENT [OR COMBINATION CURB AND GUTTER (THE TYPE SPECIFIED ON THE PLANS)], WILL BE DETERMINED IN THE FIELD BY THE ENGINEER.
- TEN (10) FOOT TRANSITIONS SHALL BE USED TO MATCH PROPOSED CURB AND GUTTER AND MEDIAN ITEMS OF WORK TO EXISTING CURBS AND GUTTER AND MEDIANS IN THE FIELD, UNLESS OTHERWISE SHOWN.
- DRAINAGE ADJUSTMENT OR RECONSTRUCTION LOCATIONS WILL BE DETERMINED IN THE FIELD BY THE ENGINEER.
- FRAMES AND GRATES ADJUSTMENT OF PRIVATE UTILITIES WITHIN THE LIMITS OF THE IMPROVEMENTS SHALL BE DONE BY THEIR RESPECTIVE OWNERS AND ARE NOT PART OF THIS CONTRACT.
- THE CONTRACTOR SHALL BE REQUIRED TO KEEP A RECORD OF THE LOCATIONS OF PLATED STRUCTURES BY STATION AND OFFSET LEFT OR RIGHT OF THE CENTERLINE OF PAVEMENT.
- PAVEMENT MARKING TAPE, TYPE III SHALL BE USED FOR SHORT TERM PAVEMENT MARKINGS ON ALL FINAL SURFACES.
- OVERNIGHT LANE CLOSURES SHALL NOT BE ALLOWED FOR REHABILITATION PROJECTS INVOLVING DAYTIME MILLING AND RESURFACING OPERATIONS AND CLASS D PATCHING UNLESS OTHER CONDITIONS WARRANT EXTENDED LANE CLOSURES AS DETERMINED AND APPROVED IN WRITING BY THE ENGINEER OR AS PROVIDED FOR IN THE CONTRACT SPECIFICATIONS.

SUMMARY OF QUANTITIES			URBAN TOTAL QUANTITIES	CONSTRUCTION TYPE CODE				
CODE NO	ITEM	UNIT		0005 80%FED 20%STATE	0005 100%STATE			
40600290	BITUMINOUS MATERIALS (TACK COAT)	POUND	12790	12790				
40600370	LONGITUDINAL JOINT SEALANT	FOOT	9580	9580				
40600400	MIXTURE FOR CRACKS, JOINTS, AND FLANGEWAYS	TON	43	43				
40600982	HOT-MIX ASPHALT SURFACE REMOVAL - BUTT JOINT	SQ YD	650	650				
40601005	HOT-MIX ASPHALT REPLACEMENT OVER PATCHES	TON	443	443				
40604062	HOT-MIX ASPHALT SURFACE COURSE, IL-9.5, MIX "D", N70	TON	2390	2390				
42001300	PROTECTIVE COAT	SQ YD	230	230				
42400200	PORTLAND CEMENT CONCRETE SIDEWALK 5 INCH	SQ FT	1785	1785				
44000155	HOT-MIX ASPHALT SURFACE REMOVAL, 1 1/2"	SQ YD	28450	28450				
44000600	SIDEWALK REMOVAL	SQ FT	1785	1785				
44002212	HOT-MIX ASPHALT REMOVAL OVER PATCHES, 3"	SQ YD	1980	1980				
44201753	CLASS D PATCHES, TYPE II, 9 INCH	SQ YD	560	560				

SUMMARY OF QUANTITIES			URBAN TOTAL QUANTITIES	CONSTRUCTION TYPE CODE				
CODE NO	ITEM	UNIT		0005 80%FED 20%STATE	0005 100%STATE			
44201757	CLASS D PATCHES, TYPE III, 9 INCH	SQ YD	360	360				
44201759	CLASS D PATCHES, TYPE IV, 9 INCH	SQ YD	170	170				
44201803	CLASS D PATCHES, TYPE II, 13 INCH	SQ YD	310	310				
44201807	CLASS D PATCHES, TYPE III, 13 INCH	SQ YD	190	190				
44201809	CLASS D PATCHES, TYPE IV, 13 INCH	SQ YD	60	60				
67100100	MOBILIZATION	L SUM	1	1				
70102620	TRAFFIC CONTROL AND PROTECTION, STANDARD 701501	L SUM	1	1				
70102625	TRAFFIC CONTROL AND PROTECTION, STANDARD 701606	L SUM	1	1				
70102635	TRAFFIC CONTROL AND PROTECTION, STANDARD 701701	L SUM	1	1				
70300100	SHORT TERM PAVEMENT MARKING	FOOT	2800	2800				
70300150	SHORT TERM PAVEMENT MARKING REMOVAL	SQ FT	1070	1070				
70300211	TEMPORARY PAVEMENT MARKING LETTERS AND SYMBOLS - PAINT	SQ FT	273	273				
70300221	TEMPORARY PAVEMENT MARKING - LINE 4"- PAINT	FOOT	5800	5800				

MODEL: Default  
 FILE NAME: p:\project-new\bea\fy.com\FW\DOT\Documents\DOT\_Offices\District\_1\Project\ID147220\CADD\DATA\Design\ID147220.dwg  
 PROJECT: ID147220

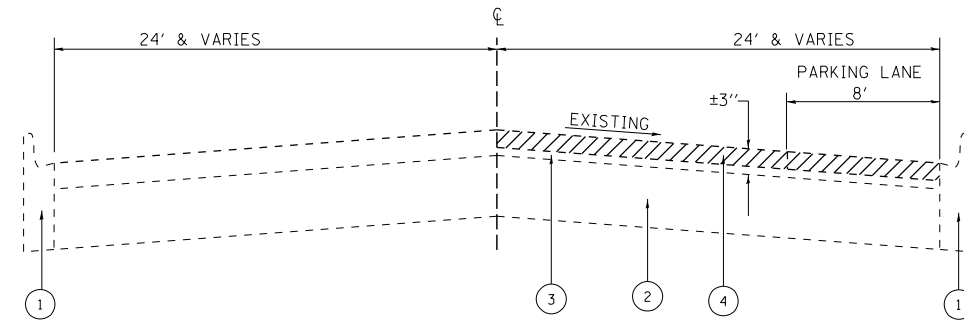
USER NAME = Fitz,Gillaume	DESIGNED -	REVISED -
PLOT SCALE = 100,0000' / in.	DRAWN -	REVISED -
PLOT DATE = 3/22/2023	CHECKED -	REVISED -
	DATE -	REVISED -

**STATE OF ILLINOIS**  
**DEPARTMENT OF TRANSPORTATION**

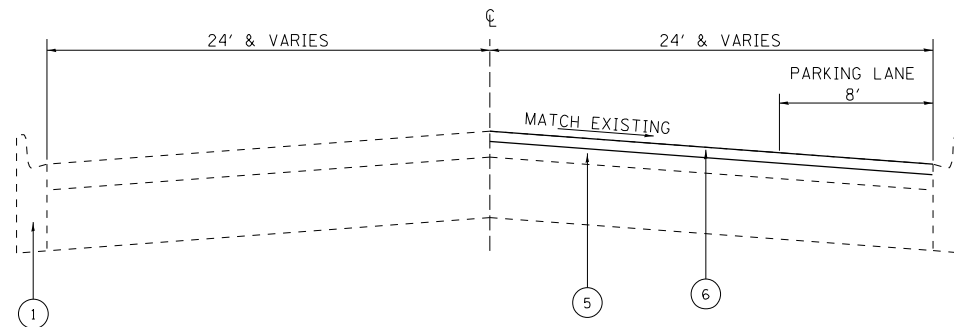
<b>SUMMARY OF QUANTITIES</b>			
SCALE: NONE	SHEET	OF	SHEETS
STA.	TO	STA.	

F.A.U RTE.	SECTION	COUNTY	TOTAL SHEETS	SHEET NO.
2812	2010-073-RS	COOK	19	3
				CONTRACT NO. 62L51
		ILLINOIS	FED. AID PROJECT	

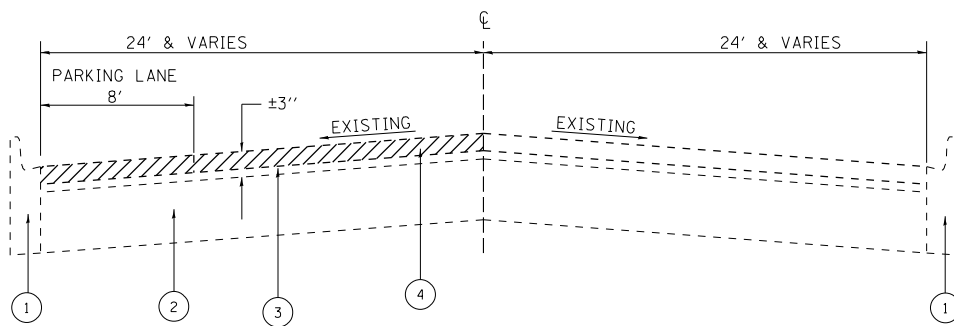




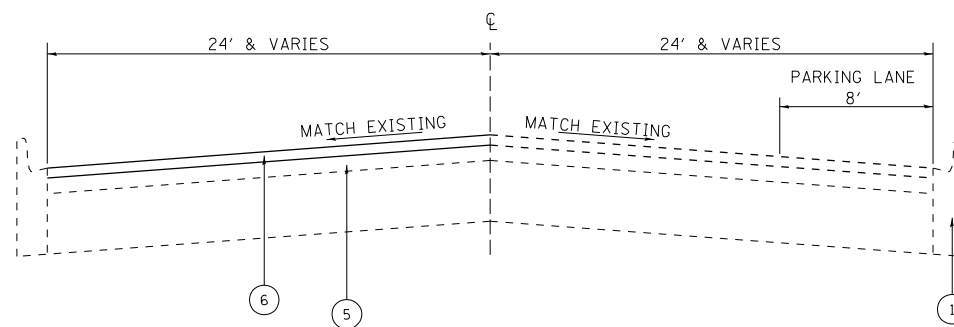
**EXISTING TYPICAL SECTION**  
 PULASKI ROAD  
 I-290 (EISENHOWER EXPY) TO CERMAK ROAD  
 STA. 15+64 TO STA. 35+35  
 STA. 41+96 TO STA. 67+58



**PROPOSED TYPICAL SECTION**  
 PULASKI ROAD  
 I-290 (EISENHOWER EXPY) TO CERMAK ROAD  
 STA. 15+64 TO STA. 35+35  
 STA. 41+96 TO STA. 68+58



**EXISTING TYPICAL SECTION**  
 PULASKI ROAD  
 I-290 (EISENHOWER EXPY) TO CERMAK ROAD  
 STA. 35+35 TO STA. 41+00



**PROPOSED TYPICAL SECTION**  
 PULASKI ROAD  
 I-290 (EISENHOWER EXPY) TO CERMAK ROAD  
 STA. 35+35 TO STA. 41+00

**LEGEND**

1. EXISTING COMBINATION CONCRETE CURB AND GUTTER
2. EXISTING P.C. CONCRETE PAVEMENT ± 9"
3. EXISTING HMA SURFACE COURSE ± 3"
4. PROPOSED HMA SURFACE REMOVAL (1 1/2")
5. EXISTING HMA SURFACE OVERLAY AFTER MILLING, ± 1 1/2"
6. PROPOSED HMA SURFACE COURSE, MIX "D", N70, IL-9.5, (1 1/2")

HOT-MIX ASPHALT MIXTURE REQUIREMENTS		
MIXTURE TYPE	AIR VOIDS @ NDES	QMP
HMA SURFACE COURSE, MIX D, N70, (IL-9.5 mm)	4% @ 70 GYR	QCP
CLASS D PATCHES (HMA BINDER IL 19 mm)	4% @ 70 GYR	QC / QA
HMA REPLACEMENT OVER PATCHES (HMA BINDER IL 19 mm)	4% @ 70 GYR	QC / QA

QMP DESIGNATION: QUALITY CONTROL/QUALITY ASSURANCE (QC/QA); QUALITY CONTROL FOR PERFORMANCE (QCP); PAY FOR PERFORMANCE (PFP)

**NOTES**

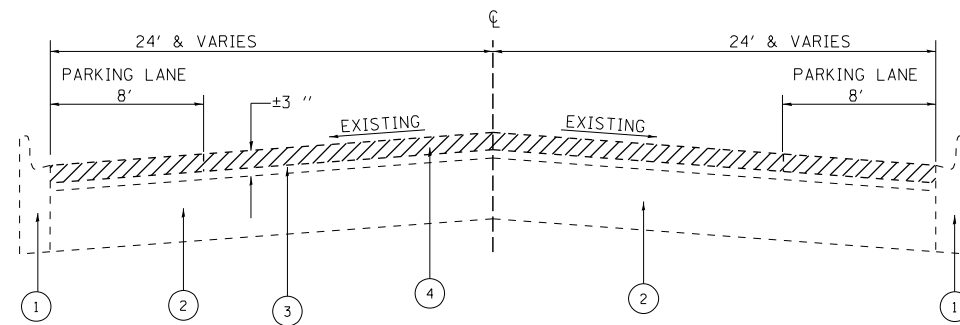
THE UNIT WEIGHT USED TO CALCULATE ALL HMA SURFACE COURSE MIXTURES IS 112 LBS/SOYD/IN.  
 THE "AC TYPE" FOR POLYMERIZED HMA MIXES SHALL BE "SBS/SBR PG 76-22" AND FOR NON-POLYMERIZED HMA THE "AC TYPE" SHALL BE "PG 64-22" UNLESS MODIFIED BY RECLAIMED MATERIALS SPECIFICATIONS.

**NOTES**

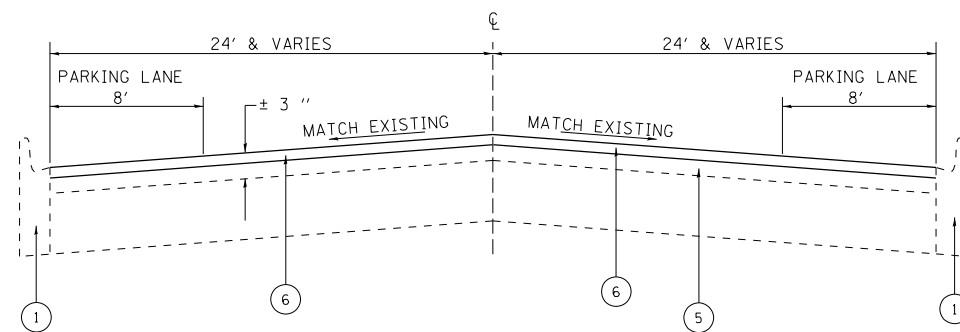
THE CONTRACTOR SHALL PATCH FIRST BEFORE MILLING  
 THE LONGITUDINAL JOINT SEALANT SHALL BE PLACED ON THE MILLED SURFACE

LEGEND

1. EXISTING COMBINATION CONCRETE CURB AND GUTTER
2. EXISTING P.C. CONCRETE PAVEMENT ± 9"
3. EXISTING HMA SURFACE COURSE ± 3 "
4. PROPOSED HMA SURFACE REMOVAL (1 1/2 ")
5. EXISTING HMA SURFACE OVERLAY AFTER MILLING, ± 1 1/2"
6. PROPOSED HMA SURFACE COURSE, MIX "D", N70, IL-9.5, (1 1/2 ")

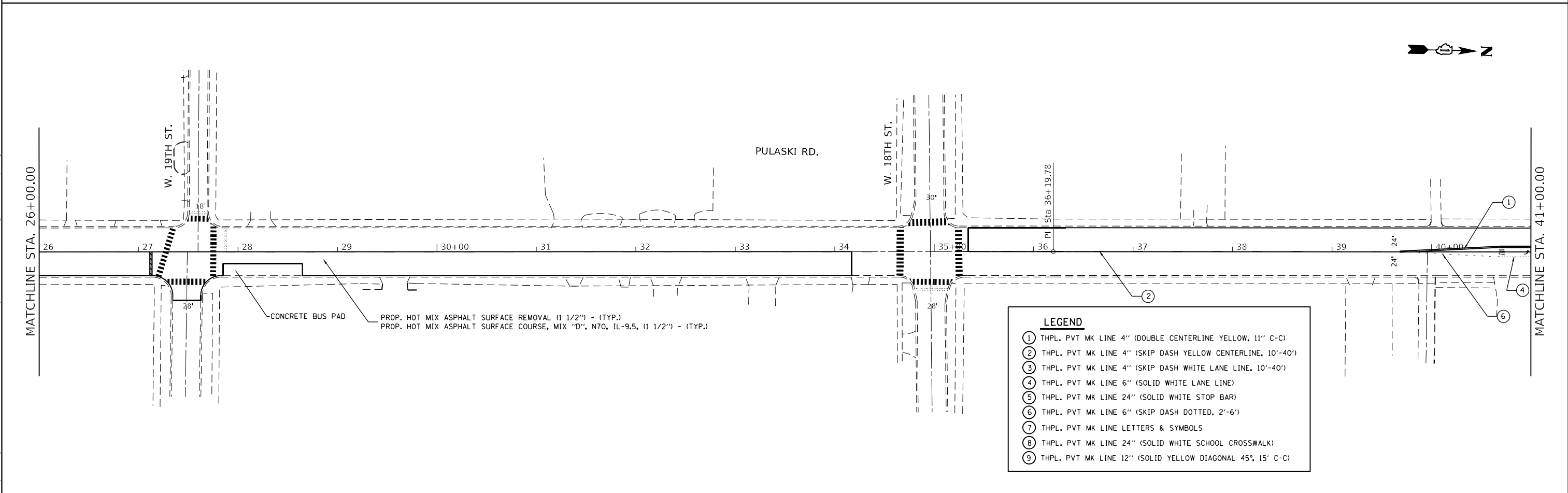
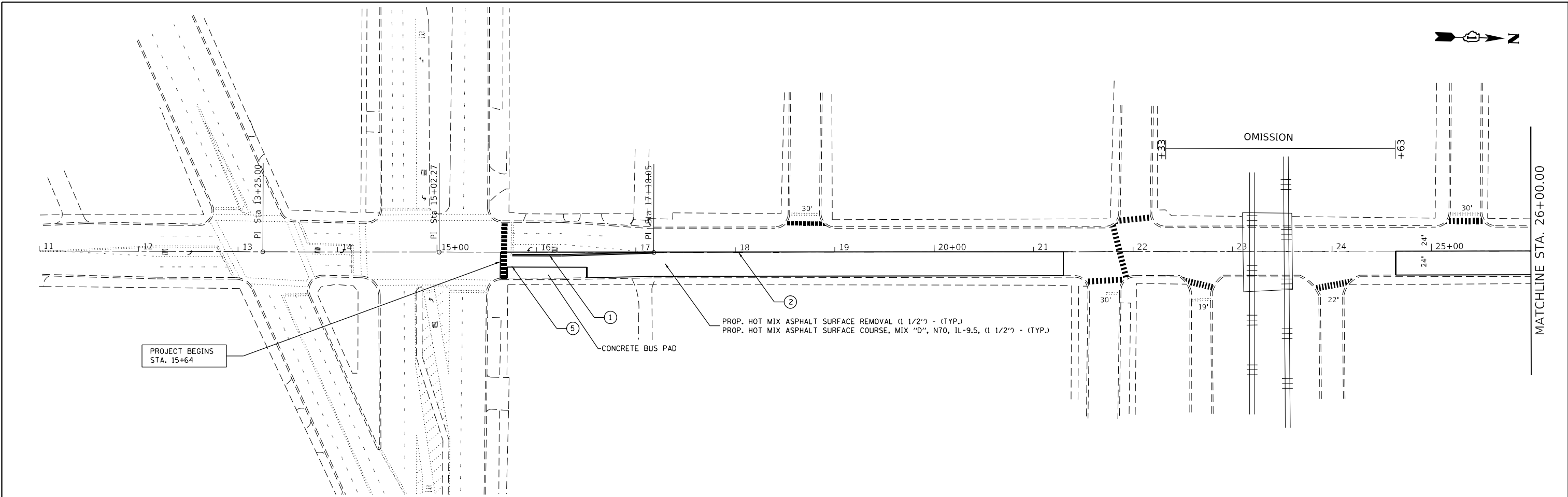


EXISTING TYPICAL SECTION  
 PULASKI ROAD  
 I-290 (EISENHOWER EXPY) TO CERMAK ROAD  
 STA. 68+98 TO STA. 95+44



PROPOSED TYPICAL SECTION  
 PULASKI ROAD  
 I-290 (EISENHOWER EXPY) TO CERMAK ROAD  
 STA. 68+98 TO STA. 95+44

FILE NAME =	USER NAME = Fritz.Guillemo	DESIGNED -	REVISED -	<b>STATE OF ILLINOIS DEPARTMENT OF TRANSPORTATION</b>	<b>PULASKI RD. (EISENHOWER EXPY TO CERMAK ROAD) TYPICAL SECTIONS</b>	F.A.U. RTE.	SECTION	COUNTY	TOTAL SHEETS	SHEET NO.
pw:\idot-pw.bentley.com\PWIDOT\Documents\IDOT Offices\District 1\Projects\DI47220\CD\Drawings\DI47220-sh-t-pln.dgn	DRWN	REVISED -	REVISED -			2812	2020-073-R5	COOK	19	6
PLOT SCALE = 100.0002' / in.	CHECKED -	REVISED -	REVISED -			CONTRACT NO. 62L51				
PLOT DATE = 3/22/2023	DATE -	REVISED -	REVISED -			SCALE: SHEET NO. OF SHEETS STA. TO STA. FED. ROAD DIST. NO. 1 ILLINOIS FED. AID PROJECT				



**LEGEND**

- ① THPL. PVT MK LINE 4" (DOUBLE CENTERLINE YELLOW, 11" C-C)
- ② THPL. PVT MK LINE 4" (SKIP DASH YELLOW CENTERLINE, 10'-40')
- ③ THPL. PVT MK LINE 4" (SKIP DASH WHITE LANE LINE, 10'-40')
- ④ THPL. PVT MK LINE 6" (SOLID WHITE LANE LINE)
- ⑤ THPL. PVT MK LINE 24" (SOLID WHITE STOP BAR)
- ⑥ THPL. PVT MK LINE 6" (SKIP DASH DOTTED, 2'-6')
- ⑦ THPL. PVT MK LINE LETTERS & SYMBOLS
- ⑧ THPL. PVT MK LINE 24" (SOLID WHITE SCHOOL CROSSWALK)
- ⑨ THPL. PVT MK LINE 12" (SOLID YELLOW DIAGONAL 45°, 15' C-C)

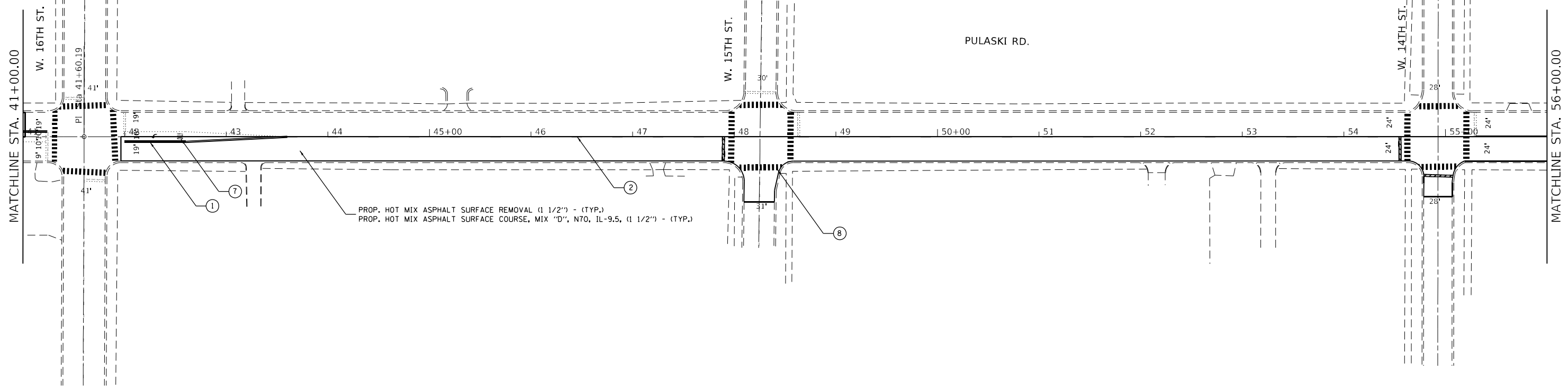
MODEL: Default  
 FILE NAME: pulaski-rd-bead-bar-com-PW\DOT\Documents\DOT Office\Drawings\1\Project\147220\Cadd\Drawings\147220-ctr-bead-bar.dwg  
 PLOT DATE: 3/22/2023

USER NAME = Fritz, Guillaume	DESIGNED -	REVISED -
	DRAWN -	REVISED -
PLOT SCALE = 100,0000' / in.	CHECKED -	REVISED -
PLOT DATE = 3/22/2023	DATE -	REVISED -

**STATE OF ILLINOIS  
DEPARTMENT OF TRANSPORTATION**

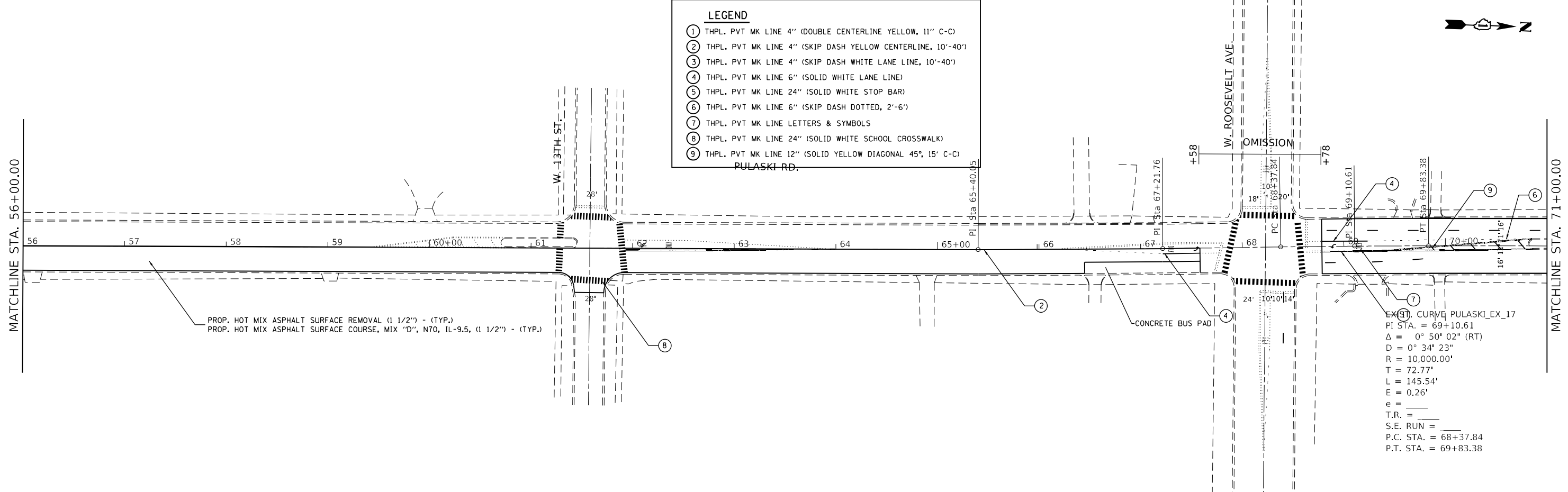
<b>ROADWAY PLAN</b>			
<b>PULASKI RD (CERMAK RD (22ND ST) TO 1-290)</b>			
SCALE: 1"=50'	SHEET	OF SHEETS	STA. TO STA.

F.A.U. RTE.	SECTION	COUNTY	TOTAL SHEETS	SHEET NO.
2812	2020-073-R5	COOK	19	7
CONTRACT NO. 62L51				
ILLINOIS FED. AID PROJECT				



**LEGEND**

- ① THPL. PVT MK LINE 4" (DOUBLE CENTERLINE YELLOW, 11" C-C)
- ② THPL. PVT MK LINE 4" (SKIP DASH YELLOW CENTERLINE, 10'-40')
- ③ THPL. PVT MK LINE 4" (SKIP DASH WHITE LANE LINE, 10'-40')
- ④ THPL. PVT MK LINE 6" (SOLID WHITE LANE LINE)
- ⑤ THPL. PVT MK LINE 24" (SOLID WHITE STOP BAR)
- ⑥ THPL. PVT MK LINE 6" (SKIP DASH DOTTED, 2'-6')
- ⑦ THPL. PVT MK LINE LETTERS & SYMBOLS
- ⑧ THPL. PVT MK LINE 24" (SOLID WHITE SCHOOL CROSSWALK)
- ⑨ THPL. PVT MK LINE 12" (SOLID YELLOW DIAGONAL 45°, 15' C-C)



MODEL: Default  
 FILE NAME: pulaski-raw-beadby.com\FW\DOT\Documents\DOT Office\Drawings\Project\147220\Cadd\Drawings\147220-raw-beadby.com

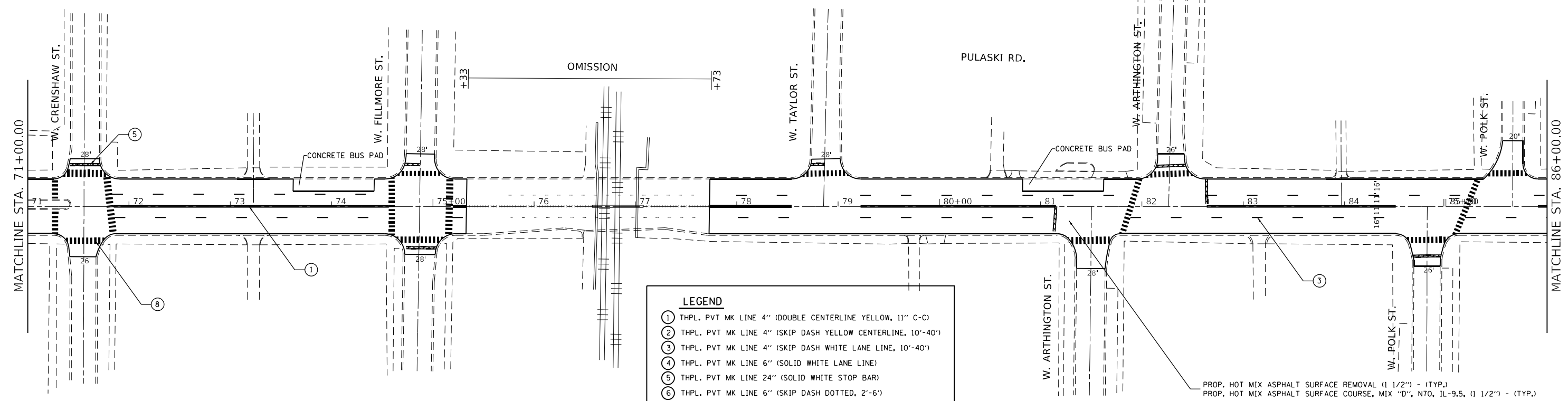
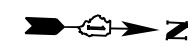
USER NAME = Fritz, Guillaume	DESIGNED -	REVISED -
	DRAWN -	REVISED -
PLOT SCALE = 100,0000' / in.	CHECKED -	REVISED -
PLOT DATE = 3/22/2023	DATE -	REVISED -

**STATE OF ILLINOIS**  
**DEPARTMENT OF TRANSPORTATION**

<b>ROADWAY PLAN</b>			
<b>PULASKI RD (CERMAK RD (22ND ST) TO 1-290)</b>			
SCALE: 1"=50'	SHEET	OF SHEETS	STA. TO STA.

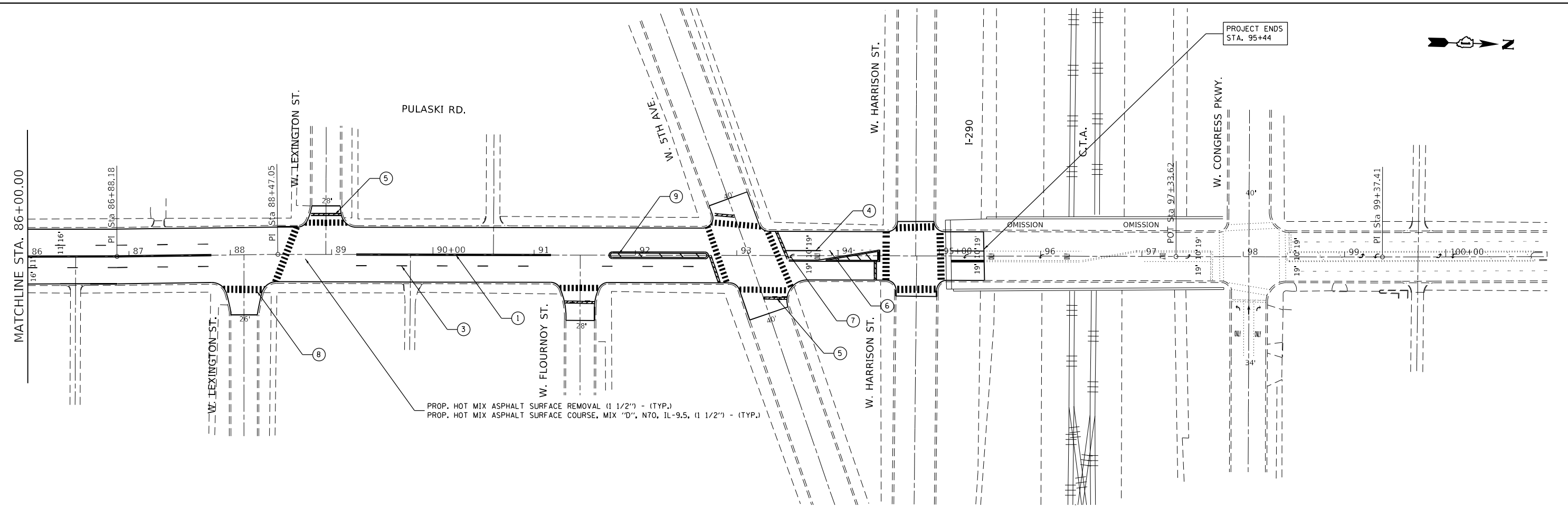
F.A.U. RTE.	SECTION	COUNTY	TOTAL SHEETS	SHEET NO.
2812	2020-073-R5	COOK	19	8
CONTRACT NO. 62L51				
ILLINOIS FED. AID PROJECT				





- LEGEND**
- ① THPL. PVT MK LINE 4" (DOUBLE CENTERLINE YELLOW, 11" C-C)
  - ② THPL. PVT MK LINE 4" (SKIP DASH YELLOW CENTERLINE, 10'-40')
  - ③ THPL. PVT MK LINE 4" (SKIP DASH WHITE LANE LINE, 10'-40')
  - ④ THPL. PVT MK LINE 6" (SOLID WHITE LANE LINE)
  - ⑤ THPL. PVT MK LINE 24" (SOLID WHITE STOP BAR)
  - ⑥ THPL. PVT MK LINE 6" (SKIP DASH DOTTED, 2'-6')
  - ⑦ THPL. PVT MK LINE LETTERS & SYMBOLS
  - ⑧ THPL. PVT MK LINE 24" (SOLID WHITE SCHOOL CROSSWALK)
  - ⑨ THPL. PVT MK LINE 12" (SOLID YELLOW DIAGONAL 45°, 15' C-C)

PROP. HOT MIX ASPHALT SURFACE REMOVAL (1 1/2") - (TYP.)  
 PROP. HOT MIX ASPHALT SURFACE COURSE, MIX "D", N70, IL-9.5, (1 1/2") - (TYP.)



PROP. HOT MIX ASPHALT SURFACE REMOVAL (1 1/2") - (TYP.)  
 PROP. HOT MIX ASPHALT SURFACE COURSE, MIX "D", N70, IL-9.5, (1 1/2") - (TYP.)

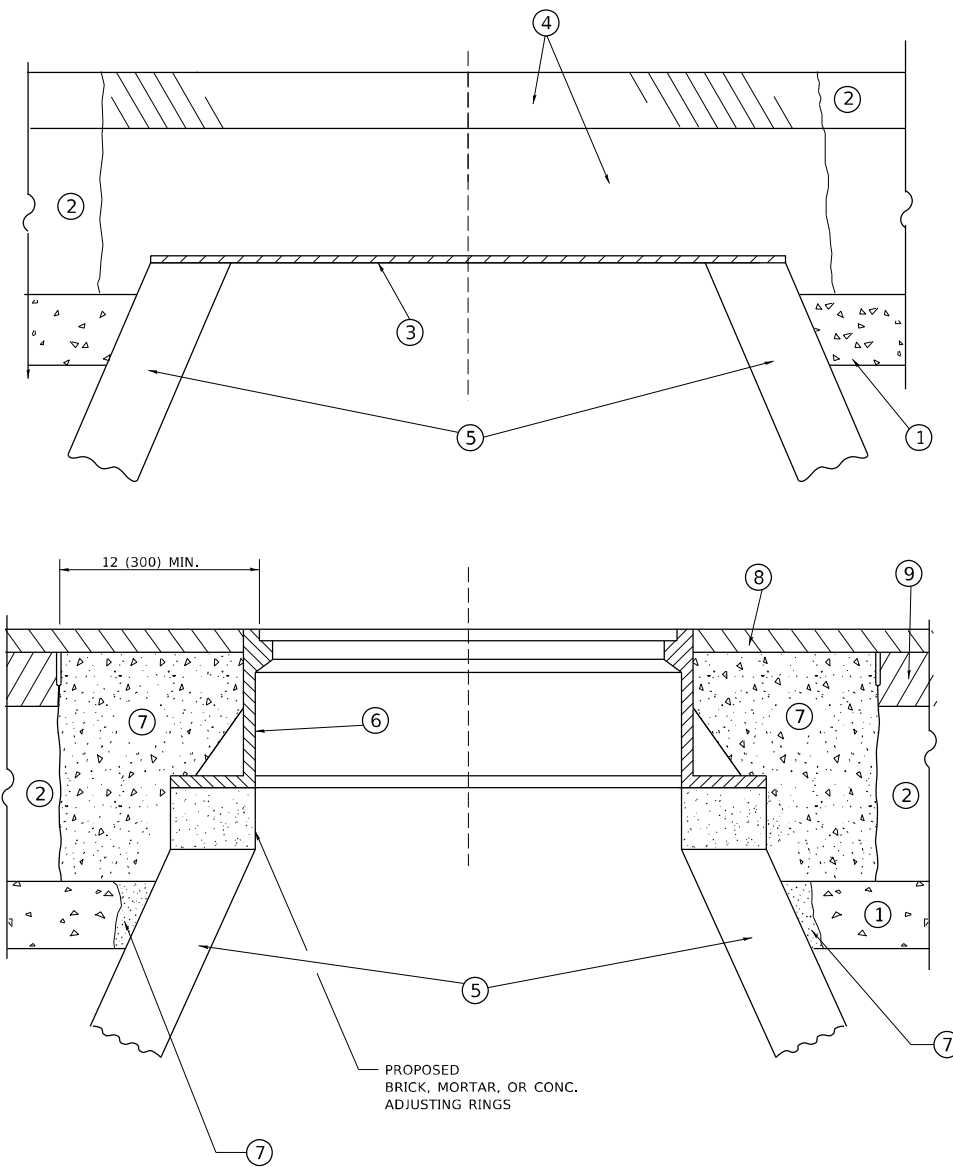
MODEL Default  
 FILE NAME: pulaski-rd-2023-03-22-11:00:00-11:00:00.dwg  
 PROJECT: I-290/2023-03-22-11:00:00-11:00:00.dwg  
 PROJECT: I-290/2023-03-22-11:00:00-11:00:00.dwg

USER NAME = Fritz, Guillaume	DESIGNED -	REVISED -
	DRAWN -	REVISED -
PLOT SCALE = 100,0000' / in.	CHECKED -	REVISED -
PLOT DATE = 3/22/2023	DATE -	REVISED -

**STATE OF ILLINOIS  
 DEPARTMENT OF TRANSPORTATION**

**ROADWAY PLAN**  
**PULASKI RD (CERMAK RD (22ND ST) TO I-290)**  
 SCALE: 1"=50' SHEET OF SHEETS STA. TO STA.

F.A.U. RTE.	SECTION	COUNTY	TOTAL SHEETS	SHEET NO.
2812	2020-073-R5	COOK	19	9
CONTRACT NO. 62L51				
ILLINOIS FED. AID PROJECT				



**DETAILS FOR FRAMES AND LIDS ADJUSTMENT  
WITH MILLING**

**NOTES**

1. EXISTING BROKEN FRAMES AND LIDS SHALL BE REMOVED AND DISPOSED OF BY THE CONTRACTOR AND SHALL BE REPLACED AS DIRECTED BY THE ENGINEER. REPLACEMENT FRAMES AND LIDS WILL BE PAID FOR IN ACCORDANCE WITH ARTICLE 109.04 OF THE STANDARD SPECIFICATIONS UNLESS A SEPARATE PAY ITEM HAS BEEN PROVIDED.
2. IF THE EXISTING LIDS ARE OPEN, THE FRAME WILL BE ADJUSTED TO THE ELEVATION OF THE MILLED PAVEMENT SURFACE PRIOR TO THE MILLING OPERATION. THE FRAME WILL NOT BE REMOVED AND COVERED BY THE METAL PLATE.
3. CITY OF CHICAGO CASTINGS ARE THE PROPERTY OF THE CITY AND THE CONTRACTOR SHALL NOTIFY THE CITY FOR REMOVAL AND DISPOSITION OF THE CASTINGS.
4. THE METAL PLATE USED TO COVER THE STRUCTURE SHALL REMAIN THE PROPERTY OF THE CONTRACTOR.

**CONSTRUCTION PROCEDURES**

**STAGE 1 (BEFORE PAVEMENT MILLING)**

- A) REMOVE A MINIMUM OF 12 (300) OF THE PAVEMENT FROM AROUND THE STRUCTURE.
- B) REMOVE THE EXISTING FRAME AND LID FROM THE STRUCTURE.
- C) COVER THE STRUCTURE OPENING WITH A 36 (900) DIAMETER METAL PLATE.
- D) BACKFILL WITH CRUSHED STONE AND HMA SURFACE MIX APPROVED BY THE ENGINEER. (MIN. 1 1/2 (40) HMA TO REMAIN AFTER MILLING).

**STAGE 2 (AFTER PAVEMENT MILLING)**

- A) REMOVE THE HMA SURFACE MIX AND CRUSHED STONE.
- B) INSTALL THE FRAME AND LID; ADJUST THE FRAME TO ITS FINAL SURFACE ELEVATION.
- C) THE SURROUNDING SPACE SHALL BE FILLED WITH CLASS\*PP-1 CONCRETE TO THE ELEVATION OF THE SURFACE OF THE EXISTING BASE COURSE OR THE BINDER COURSE.

\* UNLESS OTHERWISE SPECIFIED IN THE PLANS.

THE PROCEDURE EXPLAINED ABOVE SHALL CONFORM TO THE APPLICABLE PORTIONS OF SECTIONS 353, 406, 602, AND 603 OF THE STANDARD SPECIFICATIONS EXCEPT THAT "THE CONTRACTOR SHALL ADJUST THE STRUCTURES TO THE FINISHED PAVEMENT ELEVATION NO MORE THAN 5 CALENDAR DAYS PRIOR TO PLACEMENT OF THE FINAL LIFT OF SURFACE UNLESS APPROVED BY THE ENGINEER."

**LEGEND**

- |  |                               |
|--|-------------------------------|
| ① SUB-BASE GRANULAR MATERIAL                 | ⑥ FRAME AND LID (SEE NOTES)   |
| ② EXISTING PAVEMENT                          | ⑦ CLASS*PP-1 CONCRETE         |
| ③ 36 (900) DIAMETER METAL PLATE              | ⑧ PROPOSED HMA SURFACE COURSE |
| ④ PROPOSED CRUSHED STONE AND HMA SURFACE MIX | ⑨ PROPOSED HMA BINDER COURSE  |
| ⑤ EXISTING STRUCTURE                         |                               |

**LOCATION OF STRUCTURES**

THE CONTRACTOR WILL BE REQUIRED TO KEEP A RECORD OF THE LOCATIONS OF THE BURIED STRUCTURES ACCORDING TO THE STATION AND DISTANCE LEFT OR RIGHT OF THE CENTERLINE OF PAVEMENT. UPON COMPLETION OF THE WORK, THE CONTRACTOR WILL DELIVER THE RECORD TO THE ENGINEER.

**BASIS OF PAYMENT**

1. REMOVING FRAMES AND LIDS ON DRAINAGE AND UTILITY STRUCTURES IN THE PAVEMENT PRIOR TO MILLING, AND ADJUSTING TO FINAL GRADE PRIOR TO PLACING THE SURFACE COURSE, WILL BE PAID FOR AT THE CONTRACT UNIT PRICE EACH FOR "FRAMES AND LIDS TO BE ADJUSTED (SPECIAL)."
2. THIS WORK WILL NOT BE PAID FOR WHEN DRAINAGE AND UTILITY STRUCTURES ARE SPECIFIED FOR PAYMENT AS STRUCTURE RECONSTRUCTION.
3. NEW FRAMES AND LIDS, WHEN SPECIFIED, WILL BE PAID FOR SEPARATELY.
4. WHEN STRUCTURES ARE TO BE ADJUSTED OR RECONSTRUCTED, THE LOWERING AND RAISING OF THE FRAMES AND LIDS WILL NOT BE PAID FOR SEPARATELY BUT WILL BE INCLUDED IN THE COST OF THE CORRESPONDING PAY ITEM.

ALL DIMENSIONS ARE IN INCHES (MILLIMETERS) UNLESS OTHERWISE SHOWN

MODEL: Default  
FILE NAME: p:\subcontract-bee\paw.com\p\INDOT\Documents\DOT Office\Drawings\1172720\CADD\data\Design\BdF5St.dgn

USER NAME = Fritz,Guillaume	DESIGNED - R. SHAH	REVISED - R. BORO 01-01-07
	DRAWN -	REVISED - R. BORO 03-09-11
PLOT SCALE = 100,0000' / in.	CHECKED -	REVISED - R. BORO 12-06-11
PLOT DATE = 8/12/2022	DATE - 10-25-94	REVISED - K. SMITH 02-01-22

**STATE OF ILLINOIS  
DEPARTMENT OF TRANSPORTATION**

**DETAILS FOR  
FRAMES AND LIDS ADJUSTMENT WITH MILLING**

SCALE: NONE SHEET 1 OF 1 SHEETS STA. TO STA.

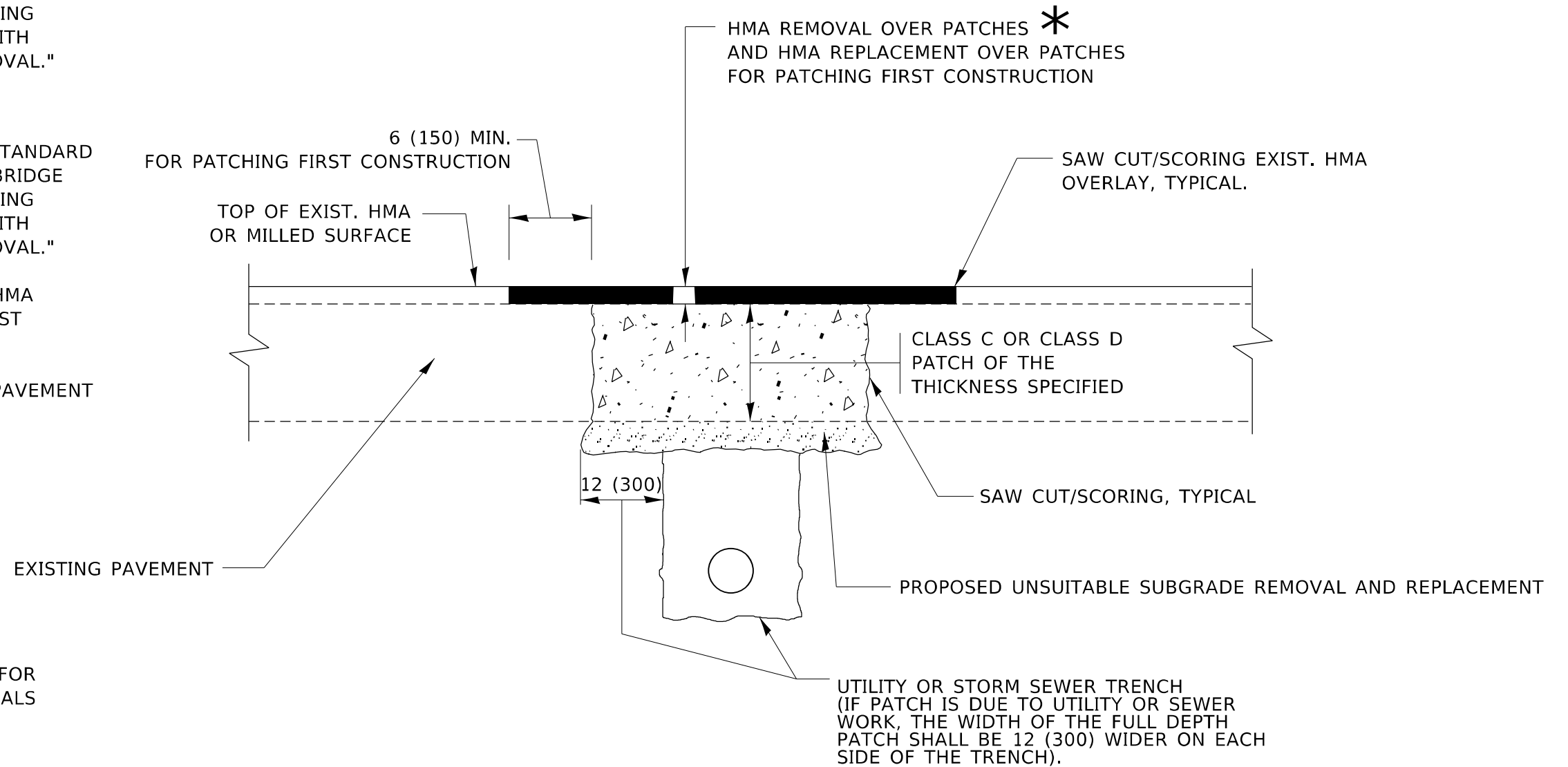
F.A.U. RTE.	SECTION	COUNTY	TOTAL SHEETS	SHEET NO.
2812	2020-073-R5	COOK	19	10
BD600-03 (BD-08)			CONTRACT NO. 62L51	
ILLINOIS FED. AID PROJECT				

**METHOD OF MEASUREMENT**

REFER TO SECTION 442 OF THE STANDARD SPECIFICATIONS FOR ROAD AND BRIDGE CONSTRUCTION AND THE RECURRING SPECIAL PROVISION "PATCHING WITH HOT-MIX ASPHALT OVERLAY REMOVAL."

**BASIS OF PAYMENT**

1. REFER TO SECTION 442 OF THE STANDARD SPECIFICATIONS FOR ROAD AND BRIDGE CONSTRUCTION AND THE RECURRING SPECIAL PROVISION "PATCHING WITH HOT-MIX ASPHALT OVERLAY REMOVAL."
2. SAW CUT/SCORING OF EXISTING HMA OVERLAY IS INCLUDED IN THE COST OF PAVEMENT PATCHING.
3. SAW CUT/SCORING OF EXISTING PAVEMENT IS INCLUDED IN THE COST OF PAVEMENT PATCHING.



\* SEE TYPICAL SECTIONS FOR THICKNESS AND MATERIALS

**SEQUENCE OF CONSTRUCTION (PATCHING FIRST)**

1. REMOVE THE EXISTING HMA MATERIAL OVER THE AREA TO BE PATCHED.
2. REMOVE AND REPLACE WITH CLASS C OR D PATCH.
3. REPLACE HMA MATERIAL OVER THE AREA TO BE PATCHED.

**SEQUENCE OF CONSTRUCTION (MILLING FIRST)**

1. MILL HMA FIRST IF THERE IS AT LEAST 4½ INCHES OR MORE OF HMA MATERIAL ON TOP OF THE EXISTING PAVEMENT OR IF THE PAVEMENT IS FULL DEPTH HMA. A MINIMUM OF 2 INCHES OF HMA MATERIAL SHALL BE IN PLACE AFTER MILLING.
2. REMOVE AND REPLACE WITH FULL DEPTH CLASS D PATCHES TO TOP OF MILLED SURFACE.

ALL DIMENSIONS ARE IN INCHES (MILLIMETERS) UNLESS OTHERWISE SHOWN.

MODEL: Default FILE NAME: p:\pilot\paw\bea\paw.com\PIV\DOT\Documents\DOT Office\District: 11\Project\10147220\CADD\data\Design\BdFSt.dgn

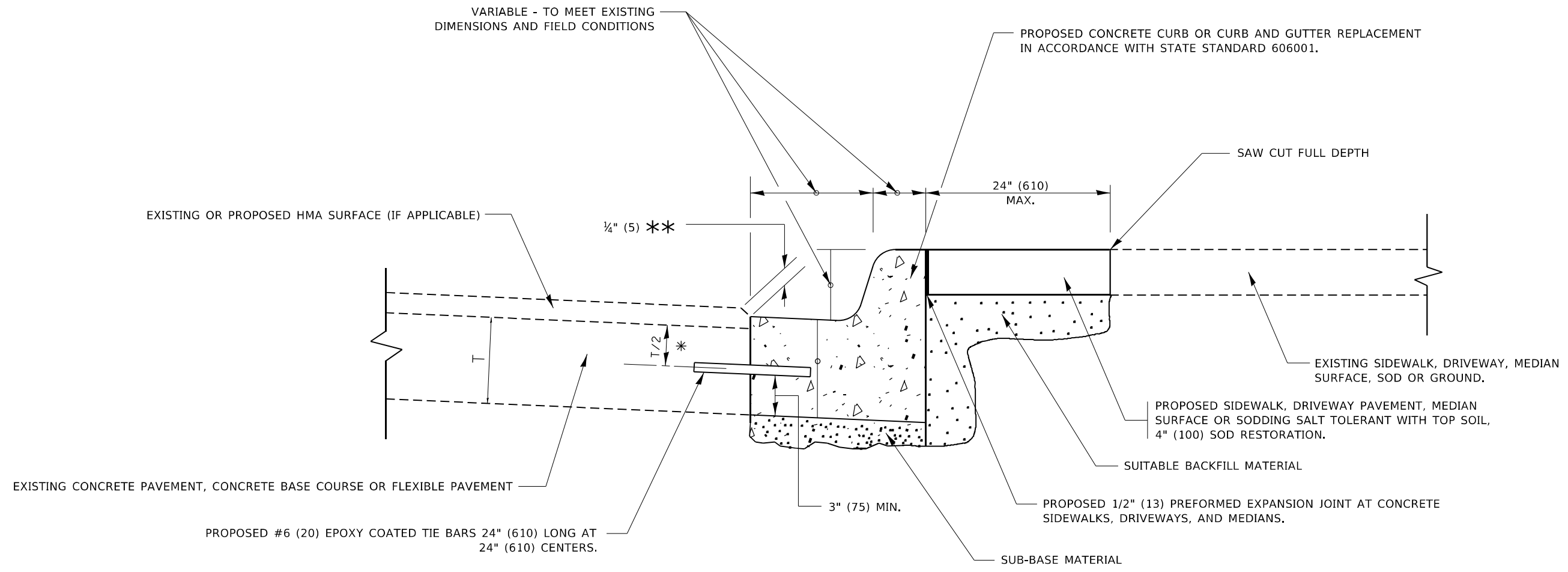
USER NAME = FitzGillaume	DESIGNED - R. SHAH	REVISED - R. BORO 01-01-07
	DRAWN -	REVISED - R. BORO 09-04-07
PLOT SCALE = 100,0000' / in.	CHECKED -	REVISED - K. ENG 10-27-08
PLOT DATE = 8/12/2022	DATE - 10-25-94	REVISED - K. SMITH 02-01-22

**STATE OF ILLINOIS  
DEPARTMENT OF TRANSPORTATION**

**PAVEMENT PATCHING FOR  
HMA SURFACED PAVEMENT**

SCALE: NONE SHEET 1 OF 1 SHEETS STA. TO STA.

F.A.U. RTE.	SECTION	COUNTY	TOTAL SHEETS	SHEET NO.
2812	2020-073-R5	COOK	19	11
<b>BD400-04 (BD-22)</b>			CONTRACT NO. 62L51	
ILLINOIS FED. AID PROJECT				



- \* 3" (75) MINIMUM FROM TOP AND BOTTOM OF THE CONCRETE PAVEMENT OR BASE COURSE.
- \*\* IF THE FINAL SURFACE OF THE PAVEMENT IS CONCRETE, THE GUTTER IS TO BE FLUSH WITH THE PAVEMENT.

# CURB OR CURB AND GUTTER REMOVAL AND REPLACEMENT

ALL DIMENSIONS ARE IN INCHES (MILLIMETERS) UNLESS OTHERWISE SHOWN.

MODEL: Default  
FILE: \\nafe.pw.usdnet-pw.bentley.com\FW\DOT\Documents\DOT Office\Dir\drt. \\Project\ID:147220\CADD\data\Design\BdRst.dgn

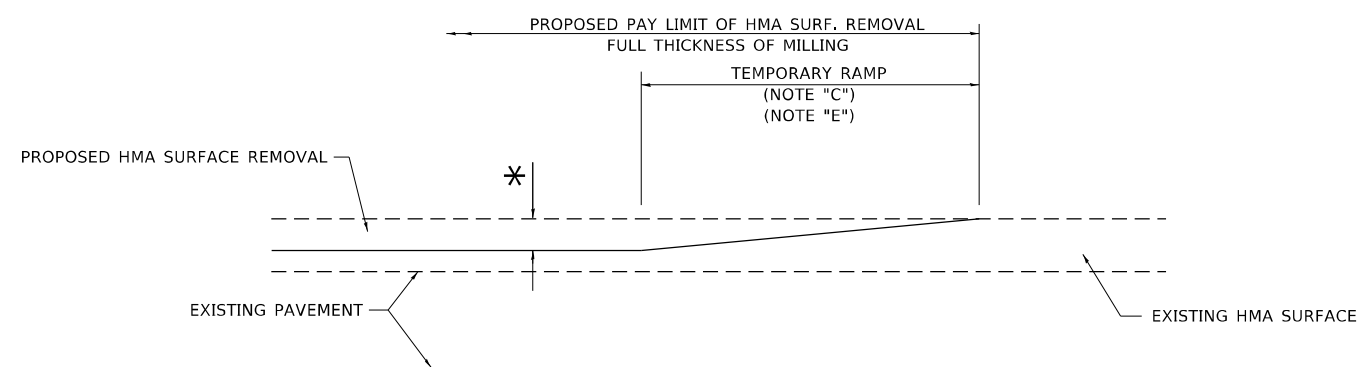
USER NAME = Fritz, Guillaume	DESIGNED - A. HOUSEH	REVISED - A. ABBAS 03-21-97
	DRAWN -	REVISED - M. GOMEZ 01-22-01
PLOT SCALE = 100,0000' / in.	CHECKED -	REVISED - R. BORO 12-15-09
PLOT DATE = 8/12/2022	DATE - 03-11-94	REVISED - K. SMITH 07-11-19

**STATE OF ILLINOIS  
DEPARTMENT OF TRANSPORTATION**

**CURB OR CURB AND GUTTER  
REMOVAL AND REPLACEMENT**

SCALE: NONE    SHEET 1 OF 1 SHEETS    STA.    TO STA.

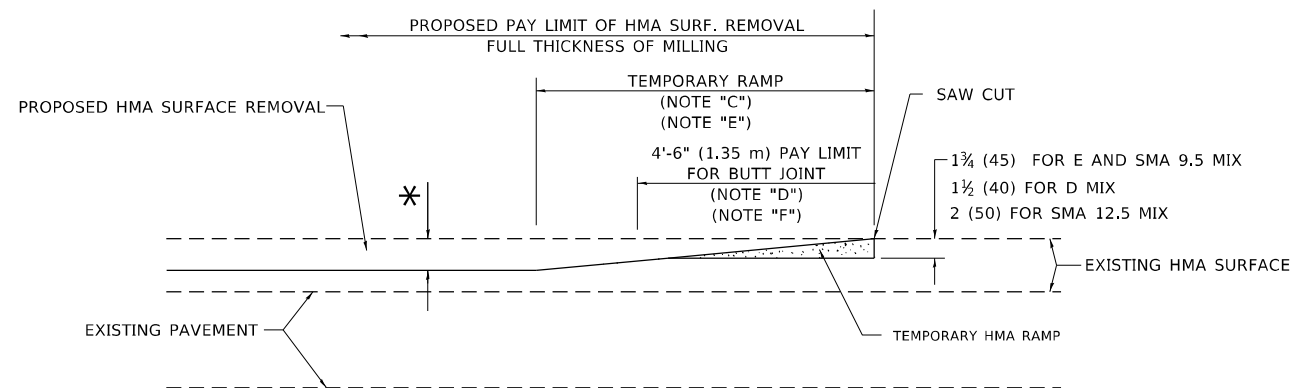
F.A.U. RTE.	SECTION	COUNTY	TOTAL SHEETS	SHEET NO.
2812	2020-073-R5	COOK	19	12
<b>BD600-06 (BD-24)</b>		CONTRACT NO. 62L51		
ILLINOIS FED. AID PROJECT				



**MILLED TEMPORARY RAMP**

(FOR BUTT JOINT AND HMA TAPER SEE DETAIL BELOW)

**OPTION 1**

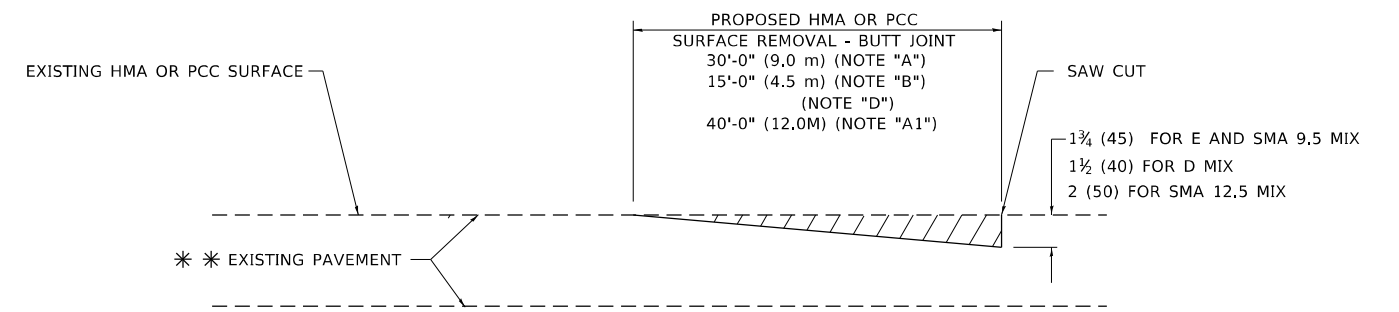


**HMA CONSTRUCTED TEMPORARY RAMP**

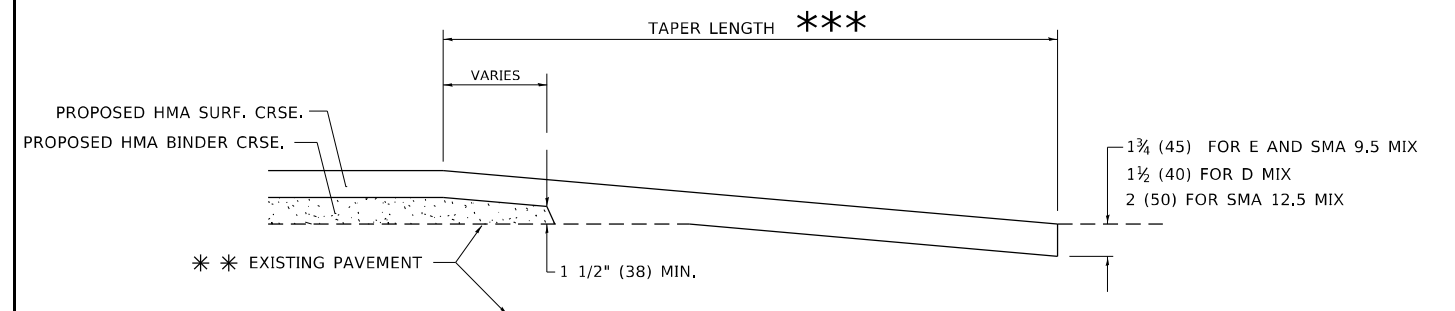
(FOR BUTT JOINT AND HMA TAPER SEE DETAIL BELOW)

**OPTION 2**

**TYPICAL TEMPORARY RAMP**



**BUTT JOINT DETAIL**



**HMA TAPER DETAIL**

**TYPICAL BUTT JOINT AND HMA TAPER FOR RESURFACING ONLY**

\*\*\* PC CONCRETE, HMA OR HMA RESURFACED PAVEMENT.

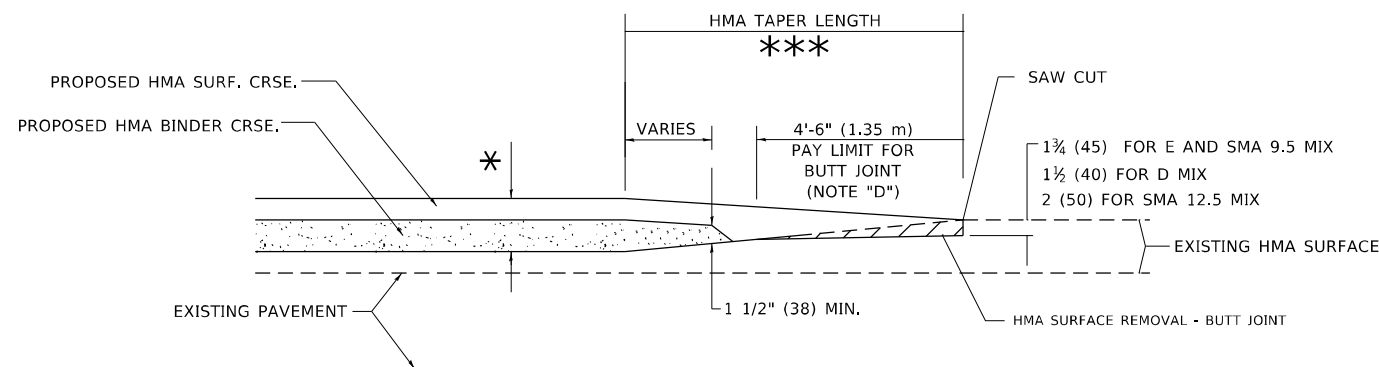
**GENERAL NOTES**

- A. MAINLINE ARTERIAL ROADWAYS AND MAJOR SIDE ROADS.
- A1. INTERSTATES
- B. MINOR SIDE ROADS.
- C. THE TEMP. RAMP SHALL BE CONSTRUCTED IMMEDIATELY UPON REMOVAL OF THE EXISTING HMA SURFACE.
- D. THE BUTT JOINT SHALL BE CONSTRUCTED IMMEDIATELY PRIOR TO PLACING THE PROPOSED HMA COURSES.
- E. TAPER THE TEMP. RAMP AT A RATE OF 3' - 4" (1.02m) PER 1 INCH (25 mm) OF MILLING THICKNESS.  
\* SEE TYPICAL SECTIONS FOR MILLING THICKNESS.
- F. SEE ARTICLE 406.08 AND 406.14 OF THE STANDARD SPECIFICATIONS FOR "HMA AND/OR PCC SURFACE REMOVAL, BUTT JOINT".  
\*\*\* 20'-0" (6.1 m) PER 1 (25) RESURFACING (NOTE "A")  
10'-0" (3.0 m) PER 1 (25) RESURFACING (NOTE "B")

**BASIS OF PAYMENT**

- 1. THE BUTT JOINT WILL BE PAID FOR AT THE CONTRACT UNIT PRICE PER SQUARE YARD (SQUARE METER) FOR "HOT-MIX ASPHALT SURFACE REMOVAL - BUTT JOINT" OR FOR "PORTLAND CEMENT CONCRETE SURFACE REMOVAL- BUTT JOINT".
- 2. THE TEMPORARY RAMP AND SAW CUT SHALL BE INCLUDED IN THE UNIT COST FOR HMA OR PCC SURFACE REMOVAL-BUTT JOINT.

ALL DIMENSIONS ARE IN INCHES (MILLIMETERS) UNLESS OTHERWISE SHOWN.



**BUTT JOINT AND HMA TAPER**

**TYPICAL BUTT JOINT AND HMA TAPER FOR MILLING AND RESURFACING**

MODEL: D:\p\h\... FILE: h\h\... PROJECT: 147220\CADD\DATA\Design\BtJStc.dgn

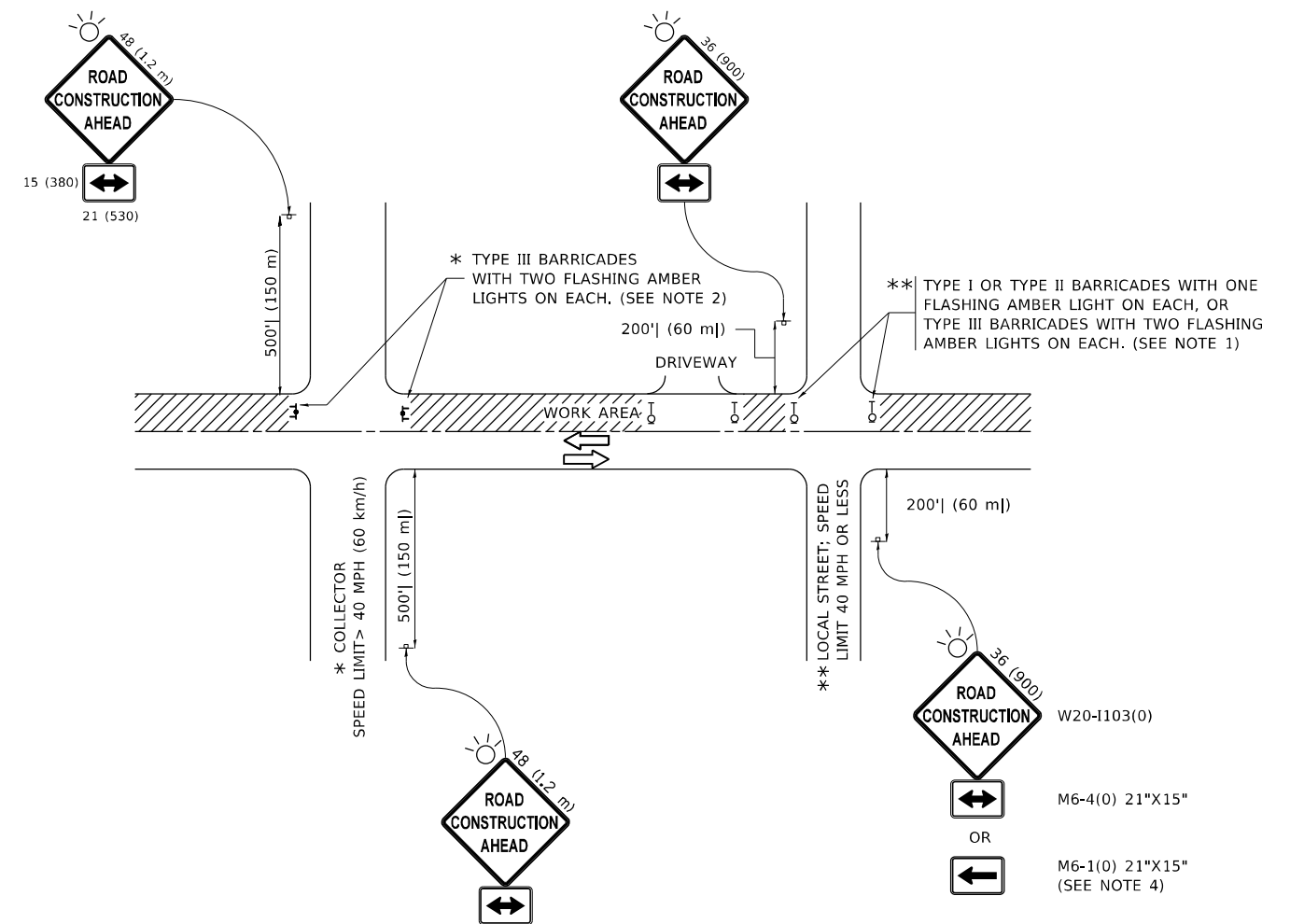
USER NAME = Fritz,Guillaume	DESIGNED - M. DE YONG	REVISED - A. ABBAS 03-21-97
	DRAWN -	REVISED - M. GOMEZ 04-06-01
PLOT SCALE = 100,0000' / in.	CHECKED -	REVISED - R. BORO 01-01-07
PLOT DATE = 8/12/2022	DATE - 06-13-90	REVISED - K. SMITH 02-01-22

STATE OF ILLINOIS  
DEPARTMENT OF TRANSPORTATION

BUTT JOINT AND  
HMA TAPER DETAILS

SCALE: NONE SHEET 1 OF 1 SHEETS STA. TO STA.

F.A.U. RTE.	SECTION	COUNTY	TOTAL SHEETS	SHEET NO.
2812	2020-073-R5	COOK	19	13
BD400-05 BD-32		CONTRACT NO. 62L51		
ILLINOIS FED. AID PROJECT				



**NOTES:**

1. SIDE ROAD WITH A SPEED LIMIT OF 40 MPH (60 km/h) OR LESS AS SHOWN ON THE DRAWING AND AS DIRECTED BY THE ENGINEER:
  - a) ONE "ROAD CONSTRUCTION AHEAD" SIGN 36 x 36 (900x900) WITH A FLASHER MOUNTED ON IT APPROXIMATELY 200' (60 m) IN ADVANCE OF THE MAIN ROUTE.
  - b) THE CLOSED PORTION OF THE MAIN ROUTE SHALL BE PROTECTED BY BLOCKING WITH TYPE I, TYPE II OR TYPE III BARRICADES, 1/3 OF THE CROSS SECTION OF THE CLOSED PORTION.
2. SIDE ROAD WITH A SPEED LIMIT GREATER THAN 40 MPH (60 km/h) AS SHOWN ON THE DRAWING AND AS DIRECTED BY THE ENGINEER:
  - a) ONE "ROAD CONSTRUCTION AHEAD" SIGN 48 x 48 (1.2 m x 1.2 m) WITH A FLASHER MOUNTED ON IT APPROXIMATELY 500' (150 m) IN ADVANCE OF THE MAIN ROUTE.
  - b) BLOCKING WITH TYPE III BARRICADES, 1/2 OF THE CROSS SECTION OF THE CLOSED PORTION.
3. CONES MAY BE SUBSTITUTED FOR BARRICADES OR DRUMS AT HALF THE SPACING DURING DAY OPERATIONS. CONES SHALL BE A MINIMUM OF 28 (710) IN HEIGHT.
4. SIGNING AND THE WORK ZONE, A SINGLE HEADED ARROW (M6-1) SHALL BE USED IN LIEU OF THE DOUBLE HEADED ARROW (M6-4).
5. WHEN WORK IS BEING PERFORMED ON A SIDE ROAD OR DRIVEWAY, FOLLOW THE APPLICABLE STANDARD(S). THE DIRECTIONAL ARROW (M6-1 OR M6-4) SHALL BE COVERED OR REMOVED WHEN NO LONGER CONSISTENT WITH THE TRAFFIC CONTROL SET-UP.
6. ADVANCE WARNING SIGNS ARE TO BE OMITTED ON DRIVEWAYS UNLESS OTHERWISE SPECIFIED IN THE PLANS OR BY THE ENGINEER.
7. THE TRAFFIC CONTROL AND PROTECTION FOR SIDE ROADS, INTERSECTIONS, AND DRIVEWAYS SHALL BE INCLUDED IN THE COST OF SPECIFIED TRAFFIC CONTROL STANDARDS OR ITEMS.

All dimensions are in inches (millimeters) unless otherwise shown.

MODEL: Default  
FILE NAME: p:\ultra-cw-beach\paw.com\PIV\DOT\Documents\DOT Office\Dir\rdet\_1\Project\147220\CADD\Drawings\BattSt.dgn

USER NAME = Fritz, Guillaume	DESIGNED - L.H.A.	REVISED - A. HOUSEH 10-15-96
PLOT SCALE = 100,0000' / in.	CHECKED -	REVISED - T. RAMMACHER 01-06-00
PLOT DATE = 8/12/2022	DATE - 06-89	REVISED - A. SCHUETZE 07-01-13
		REVISED - A. SCHUETZE 09-15-16

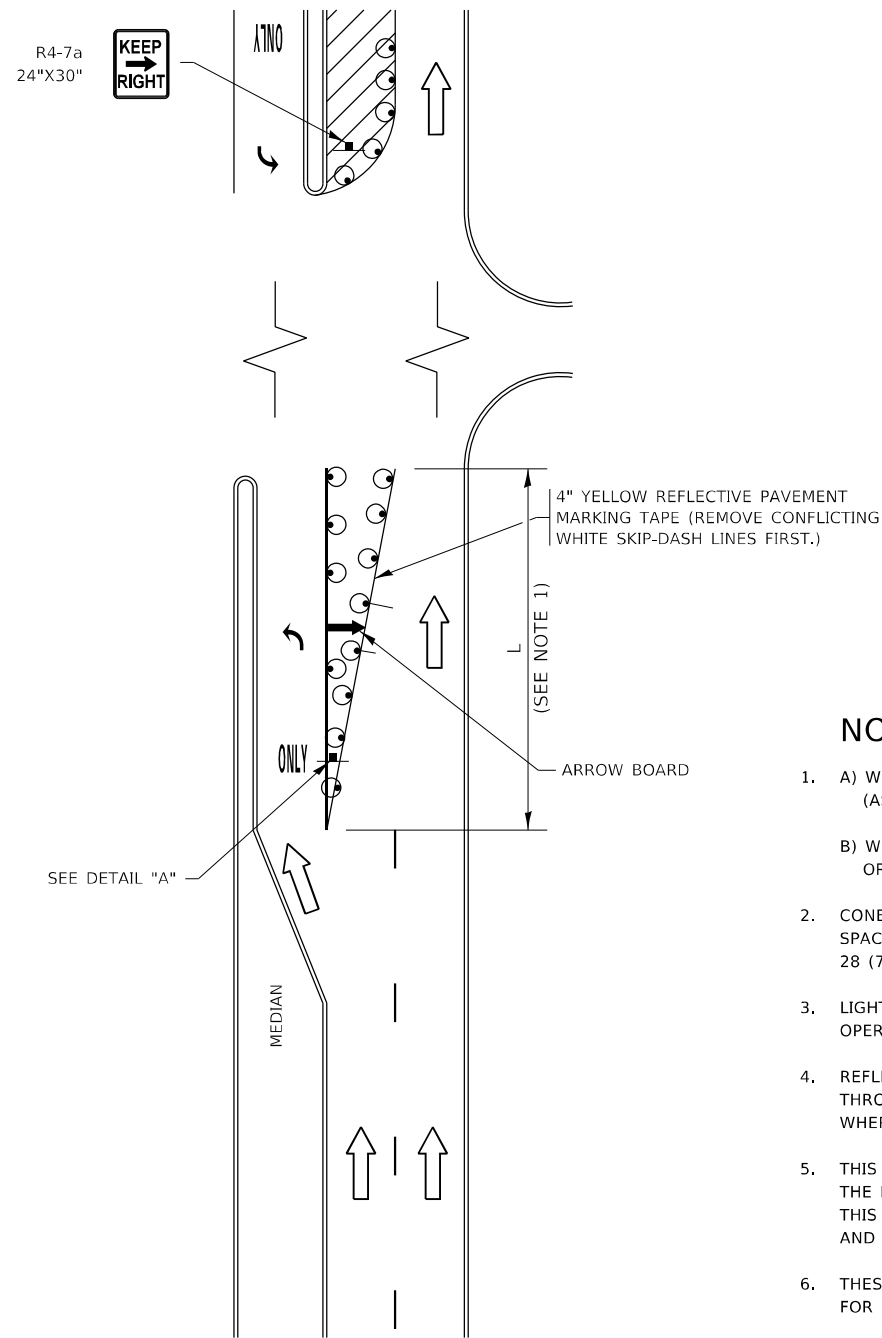
**STATE OF ILLINOIS  
DEPARTMENT OF TRANSPORTATION**

**TRAFFIC CONTROL AND PROTECTION FOR  
SIDE ROADS, INTERSECTIONS, AND DRIVEWAYS**

SCALE: NONE SHEET 1 OF 1 SHEETS STA. TO STA.

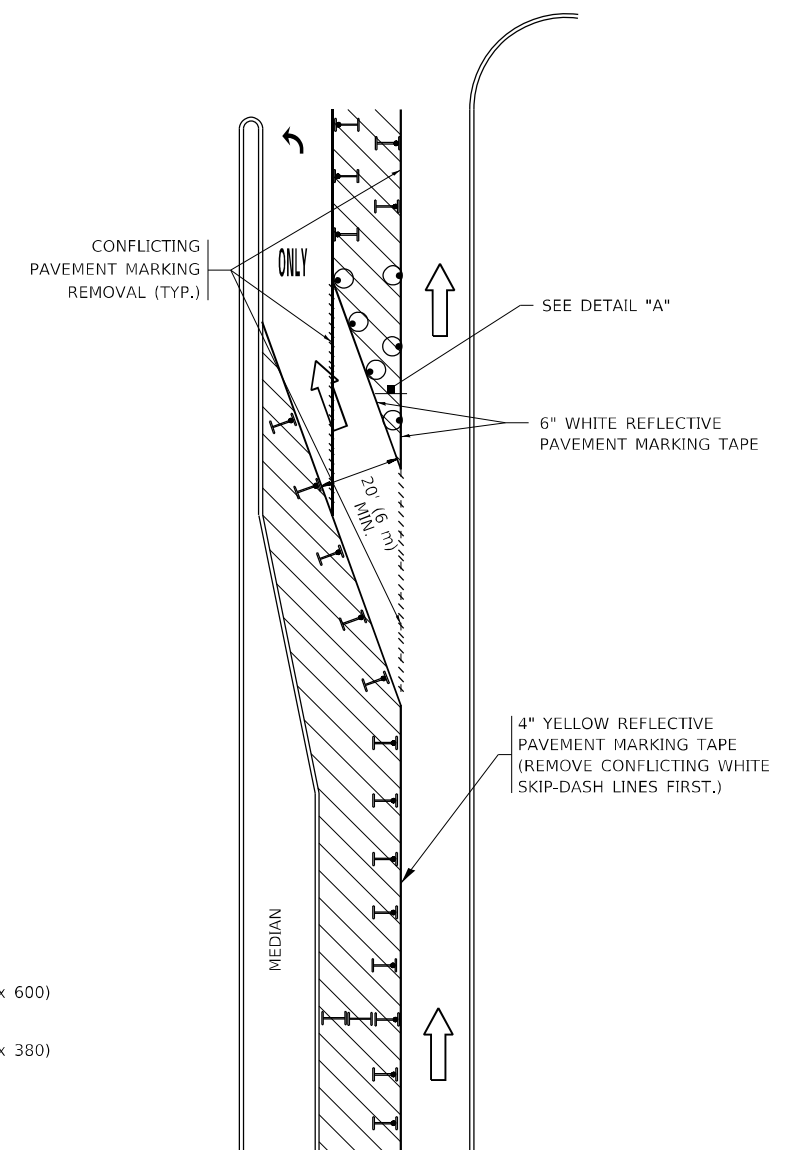
F.A.U. RTE.	SECTION	COUNTY	TOTAL SHEETS	SHEET NO.
2812	2020-073-R5	COOK	19	14
<b>TC-10</b>			CONTRACT NO. 62L51	
ILLINOIS FED. AID PROJECT				

# TURN BAY ENTRANCE AT START OF LANE CLOSURE TAPER



**FIGURE 1**

# TURN BAY ENTRANCE WITHIN A LANE CLOSURE



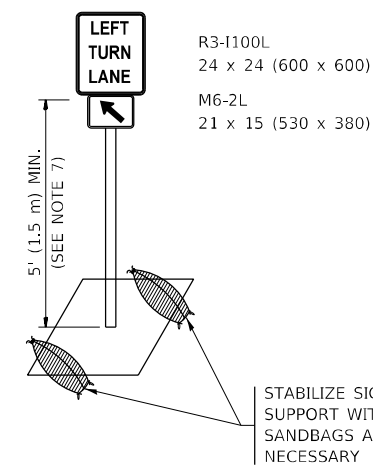
**FIGURE 2**

### LEGEND

- WORK AREA
- LANE OPEN TO TRAFFIC
- ARROW BOARD
- TYPE I OR II BARRICADE OR DRUM WITH STEADY BURN LIGHT
- DRUM WITH STEADY BURN LIGHT
- SIGN ASSEMBLY
- TYPE I OR II CHECK BARRICADE WITH FLASHING LIGHT

### NOTES:

1. A) WHEN "L" IS  $\leq$  THE STORAGE LENGTH OF THE TURN LANE (AS SHOWN IN FIG. 1), USE FIGURE 1.  
B) WHEN "L" IS  $>$  THE STORAGE LENGTH OF THE TURN LANE OR THE TURN LANE IS WITHIN THE LANE CLOSURE, USE FIGURE 2.
2. CONES MAY BE SUBSTITUTED FOR BARRICADES OR DRUMS AT HALF THE SPACING DURING DAY OPERATIONS. CONES SHALL BE A MINIMUM OF 28 (710) IN HEIGHT.
3. LIGHTS WILL NOT BE REQUIRED ON BARRICADES OR DRUMS FOR DAY OPERATIONS. ALL LIGHTS SHALL BE MONODIRECTIONAL.
4. REFLECTIVE TEMPORARY PAVEMENT MARKINGS SHALL BE PLACED THROUGHOUT THE BARRICADED AREAS OF EACH TURN BAY AS SHOWN WHERE THE CLOSURE TIME IS GREATER THAN FOURTEEN (14) DAYS.
5. THIS APPLICATION ALSO APPLIES WHEN WORK IS BEING PERFORMED IN THE RIGHT LANE(S) AND THE RIGHT TURN BAY IS TO REMAIN OPEN. UNDER THIS CONDITION, "RIGHT TURN LANE" R3-1100R 24 x 24 (600 x 600) AND M6-2R 21 x 15 (530 x 380) SHALL BE USED.
6. THESE CONTROLS SHALL SUPPLEMENT MAINLINE TRAFFIC CONTROL FOR LANE CLOSURES.
7. THE SIGNS SHALL BE MOUNTED ABOVE THE BARRICADES/DRUMS ON SEPARATE SIGN SUPPORTS THAT MEET NCHRP 350 OR MASH REQUIREMENTS.
8. TRAFFIC CONTROL AND PROTECTION AT TURN BAYS (TO REMAIN OPEN TO TRAFFIC) SHALL BE INCLUDED IN THE COST OF SPECIFIED TRAFFIC CONTROL STANDARDS OR ITEMS.



**DETAIL A**

All dimensions are in inches (millimeters) unless otherwise shown.

MODEL: Default  
FILE NAME: p:\project\paw\_bentley.com\p\w\dot\Documents\DOT Office\Dir\rdet\_1\project\147220\CADD\data\Design\BartSt.dgn

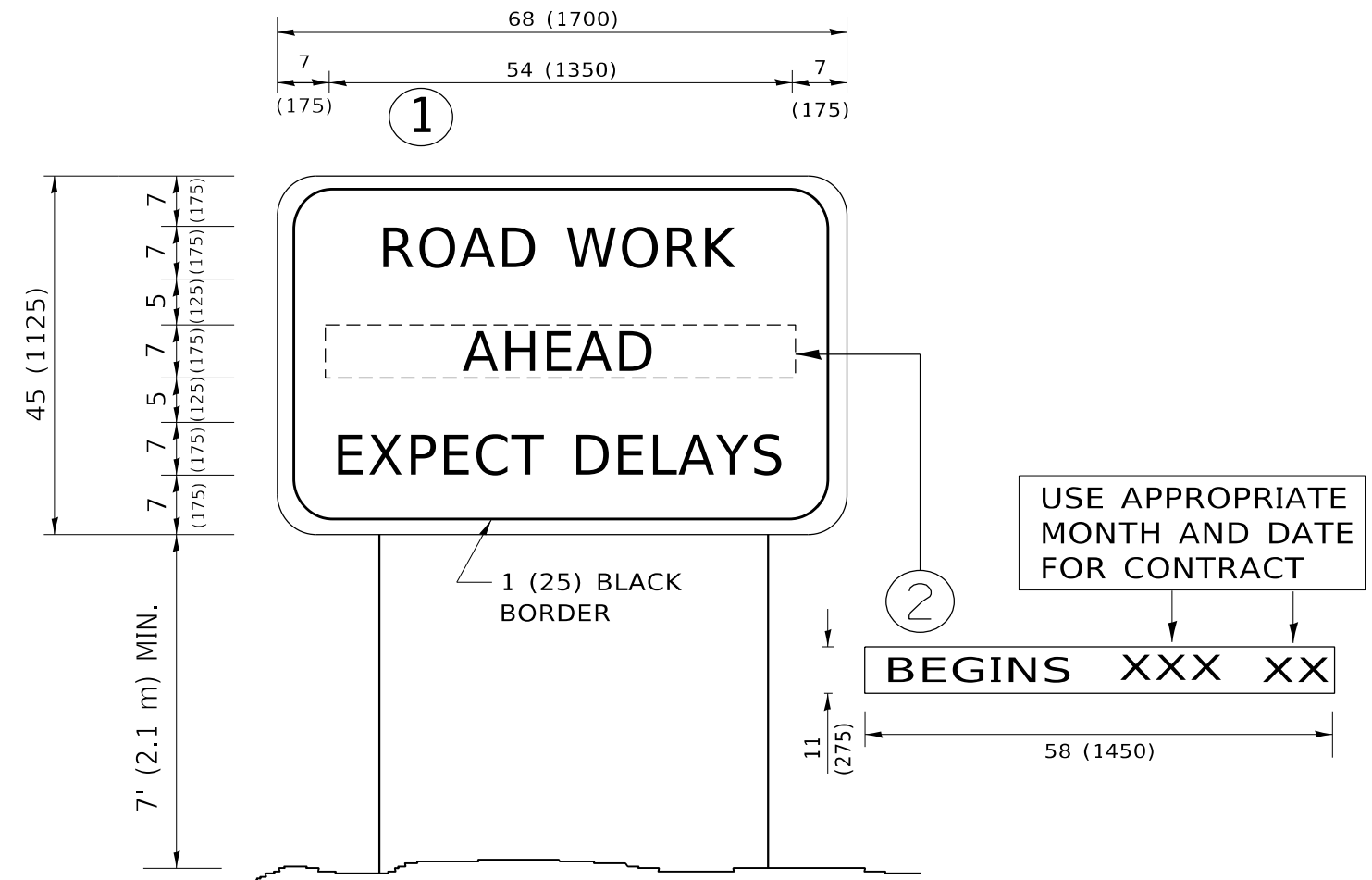
USER NAME = Fritz, Guillaume	DESIGNED - T. RAMMACHER 09-08-94	REVISED - R. BORO 09-14-09
	DRAWN - A. HOUSEH 11-07-95	REVISED - A. SCHUETZE 07-01-13
PLOT SCALE = 100,0000' / in.	CHECKED - A. HOUSEH 10-12-96	REVISED - A. SCHUETZE 09-15-16
PLOT DATE = 8/12/2022	DATE - T. RAMMACHER 01-06-00	REVISED -

STATE OF ILLINOIS  
DEPARTMENT OF TRANSPORTATION

TRAFFIC CONTROL AND PROTECTION AT TURN BAYS  
(TO REMAIN OPEN TO TRAFFIC)

SCALE: NONE SHEET 1 OF 1 SHEETS STA. TO STA.

F.A.U. RTE. 2812	SECTION 2020-073-R5	COUNTY COOK	TOTAL SHEETS 19	SHEET NO. 15
TC-14		CONTRACT NO. 62L51		
ILLINOIS FED. AID PROJECT				



**NOTES:**

1. USE BLACK LETTERING ON ORANGE BACKGROUND.
2. ERECT SIGNS IN ADVANCE OF THE LOCATION FOR THE "ROAD CONSTRUCTION AHEAD" SIGN AT LOCATIONS AS DIRECTED BY THE ENGINEER.
3. ERECT SIGN ① WITH INSTALLED PANEL ② ONE WEEK PRIOR TO THE START OF CONSTRUCTION.
4. REMOVE PANEL ② SOON AFTER THE START OF CONSTRUCTION.
5. SEE SPECIAL PROVISION FOR "TEMPORARY INFORMATION SIGNING" FOR ADDITIONAL INFORMATION.
6. ONE SIGN ASSEMBLY EQUALS 25.70 SQ. FT. (2.3 SQ. M.)
7. SHALL BE PAID FOR AS TEMPORARY INFORMATION SIGNING.

ALL DIMENSIONS ARE IN INCHES (MILLIMETERS) UNLESS OTHERWISE SHOWN.

MODEL: Default  
 FILE NAME: p:\project-aw-beachey.com\p\INDOT\Documents\INDOT\offices\Dir\drt. j\Project\147220\CADD\data\Design\BtES.dgn

USER NAME = Fitz,Gillaume	DESIGNED -	REVISED - R. MIRS 09-15-97
	DRAWN -	REVISED - R. MIRS 12-11-97
PLOT SCALE = 100,0000 ' / in.	CHECKED -	REVISED - T. RAMMACHER 02-02-99
PLOT DATE = 8/12/2022	DATE -	REVISED - C. JUCIUS 01-31-07

**STATE OF ILLINOIS  
DEPARTMENT OF TRANSPORTATION**

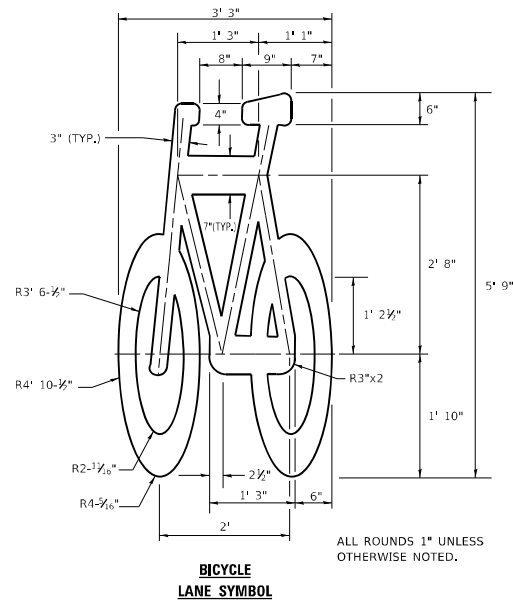
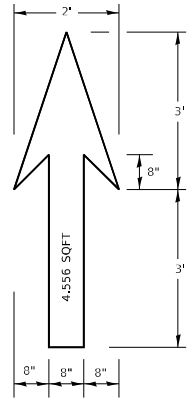
**ARTERIAL ROAD  
INFORMATION SIGN**

SCALE: NONE SHEET 1 OF 1 SHEETS STA. TO STA.

F.A.U RTE.	SECTION	COUNTY	TOTAL SHEETS	SHEET NO.
2812	2020-073-R5	COOK	19	16
<b>TC-22</b>			CONTRACT NO. 62L51	
ILLINOIS FED. AID PROJECT				



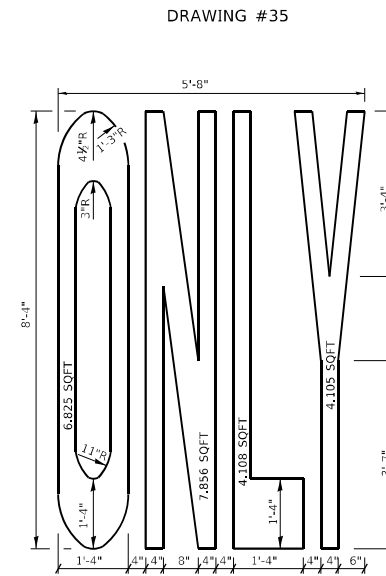
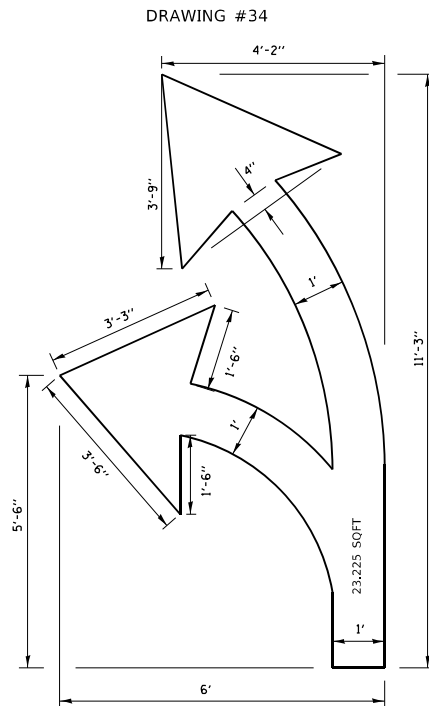
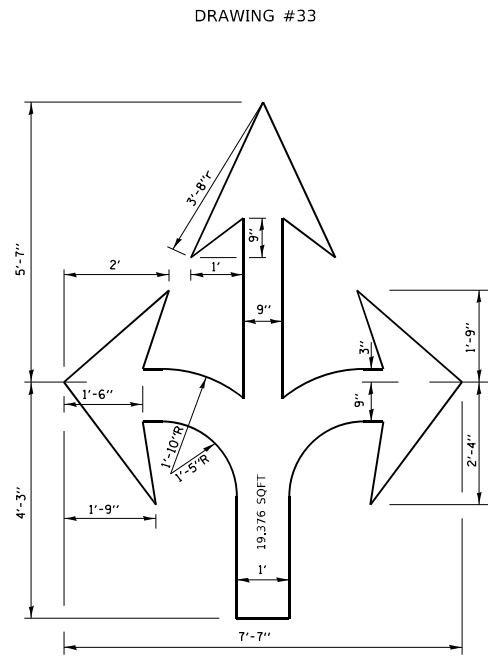
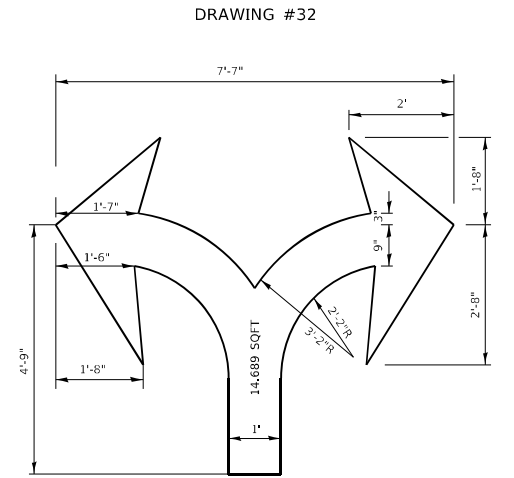
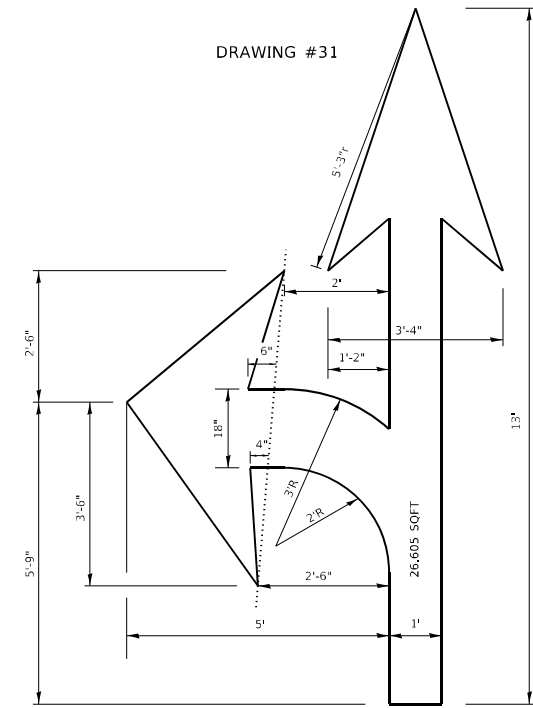
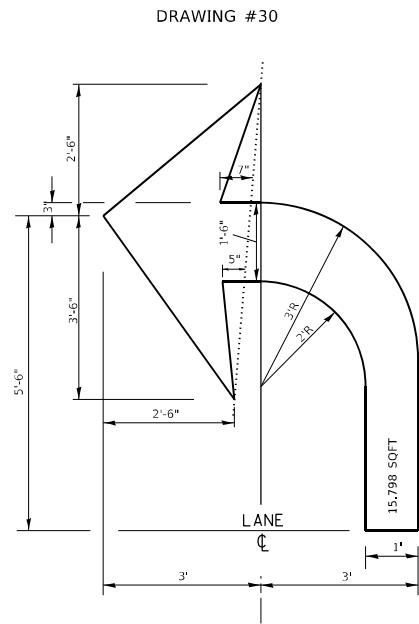
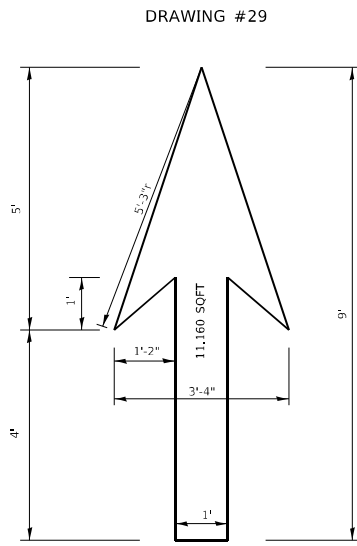




**NOTE:**

1. FOR BIKE LANE SYMBOLS ONLY, USE PRE-FORMED THERMOPLASTIC WITH A MINIMUM THICKNESS OF 90 MILS, MINIMUM SKID RESISTANCE VALUE OF 60 BPN, & A MINIMUM INDEX OF REFRACTION OF 1.50.
2. THE RESIDENT ENGINEER SHALL CONTACT MR. BEN GOMBERG AT 312-744-8093 AT LEAST ONE CALENDAR WEEK PRIOR TO INSTALLING BIKE LANE SYMBOLS.

**TYPICAL BIKE LANE SYMBOLS**  
DRAWING #28



**NOTE:**

ALL MARKINGS SHALL BE SOLID WHITE UNLESS OTHERWISE NOTED IN THE PLANS

MODEL: Default  
FILE NAME: p:\project-cw-beadefy.com\p\p\DOT\Documents\DOT Office\District 1\Project\147220\CADD\data\Design\BikeStc.dgn

USER NAME = Fritz, Guillaume	DESIGNED -	REVISED - T. RAMMACHER 12-07-00
PLOT SCALE = 100,0000 ' / in.	DRAWN -	REVISED -
PLOT DATE = 8/12/2022	CHECKED -	REVISED -
	DATE -	REVISED -

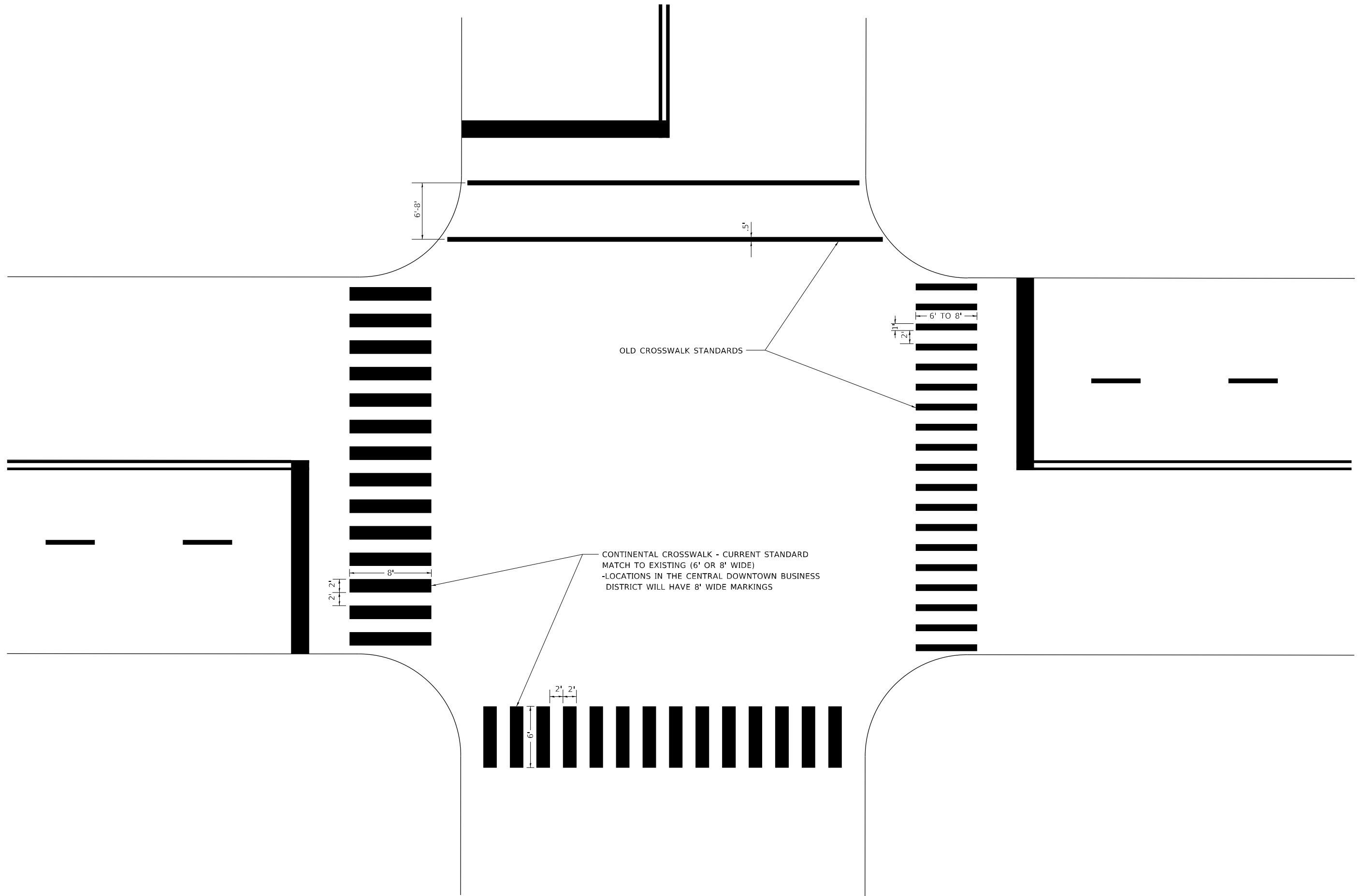
**STATE OF ILLINOIS**  
**DEPARTMENT OF TRANSPORTATION**

**CITY OF CHICAGO**  
**TYPICAL PAVEMENT MARKINGS**

SCALE: NONE SHEET 2 OF 3 SHEETS STA. TO STA.

F.A.U. RTE.	SECTION	COUNTY	TOTAL SHEETS	SHEET NO.
2812	2020-073-RS	COOK	19	18
<b>TC-24</b>			CONTRACT NO. 62L51	
ILLINOIS FED. AID PROJECT				

MODEL: Default  
 FILE NAME: p:\ultra-cw-bead\paw.com\PIV\DOT\Documents\DOT Office\District: 1\Project\14720\CADD\data\Design\PartStd.dgn



USER NAME = Fritz, Guillaume	DESIGNED -	REVISED - T. RAMMACHER 12-07-00
	DRAWN -	REVISED -
PLOT SCALE = 100,0000 ' / in.	CHECKED -	REVISED -
PLOT DATE = 8/12/2022	DATE -	REVISED -

**STATE OF ILLINOIS  
 DEPARTMENT OF TRANSPORTATION**

**CITY OF CHICAGO  
 TYPICAL PAVEMENT MARKINGS**

SCALE: NONE SHEET 3 OF 3 SHEETS STA. TO STA.

F.A.U RTE.	SECTION	COUNTY	TOTAL SHEETS	SHEET NO.
2812	2020-073-R5	COOK	19	19
<b>TC-24</b>			CONTRACT NO. 62L51	
ILLINOIS FED. AID PROJECT				