

SUMMARY OF QUANTITIES			TOTAL QUANTITIES URBAN	100% STATE 0013	CONSTRUCTION TYPE CODE				
CODE NO	ITEM	UNIT							
50102400	CONCRETE REMOVAL	CU YD	4.9	4.9					
50300255	CONCRETE SUPERSTRUCTURE	CU YD	2.2	2.2					
50300300	PROTECTIVE COAT	SO YD	15.6	15.6					
50901735	BRIDGE FENCE RAILING (SIDEWALK)	FOOT	432 <del>480</del>	432 <del>480</del>					
63000001	STEEL PLATE BEAM GUARDRAIL, TYPE A, 6 FOOT POSTS	FOOT	65	65					
63301235	REMOVE AND REERECT STEEL PLATE BEAM GUARDRAIL, ATTACHED TO STRUCTURES	FOOT	240	240					
67100100	MOBILIZATION	L SUM	1	1					
70102630	TRAFFIC CONTROL AND PROTECTION, STANDARD 701601	L SUM	1	1					
70102640	TRAFFIC CONTROL AND PROTECTION, STANDARD 701801	L SUM	1	1					
X6700407	ENGINEER'S FIELD OFFICE, TYPE A (D1)	CAL MO	12	12					
Z0007101	CONTAINMENT AND DISPOSAL OF LEAD PAINT CLEANING RESIDUES NO. 1	L SUM	1	1					
Z0010501	CLEANING AND PAINTING STEEL BRIDGE NO. 1	L SUM	1	1					
Z0030850	TEMPORARY INFORMATION SIGNING	SO FT	52.4	52.4					

SUMMARY OF QUANTITIES				TOTAL QUANTITIES	CONSTRUCTION TYPE CODE				
CODE NO	ITEM	UNIT							
Z0076604	TRAINEES - TRAINING PROGRAM GRADUATE	HOURS	500	500					

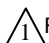
FILE NAME =	USER NAME = <i>noved.novson</i>	DESIGNED -	REVISED -
<i>pw\N\dot-pw\benfrey.com\PI\DOT\Documents\DOT - Office\District\Projects\DOT423\CAD\dot\Design\SH-500.dgn</i>		DRAWN -	REVISED -
	PLOT SCALE = 100.0000' / 1in	CHECKED -	REVISED -
	PLOT DATE = 3/30/2023	DATE -	REVISED -

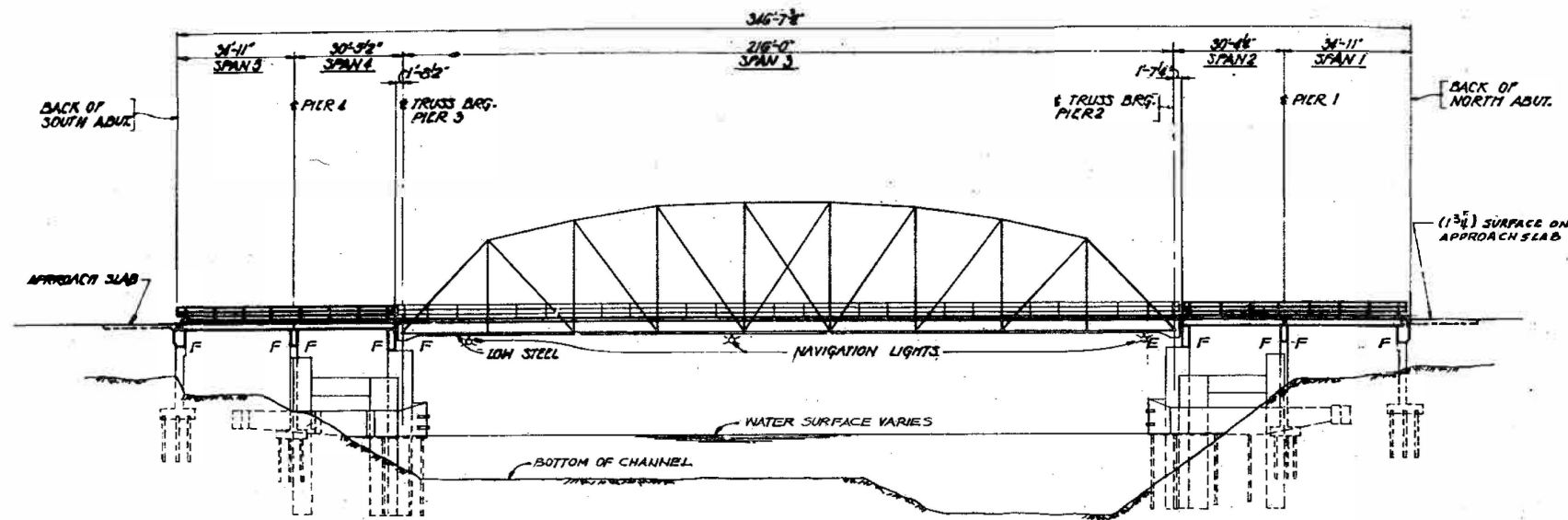
**STATE OF ILLINOIS  
DEPARTMENT OF TRANSPORTATION**

**IL-7 OVER CAL-SAG CHANNEL (016-0464)  
SUMMARY OF QUANTITIES**

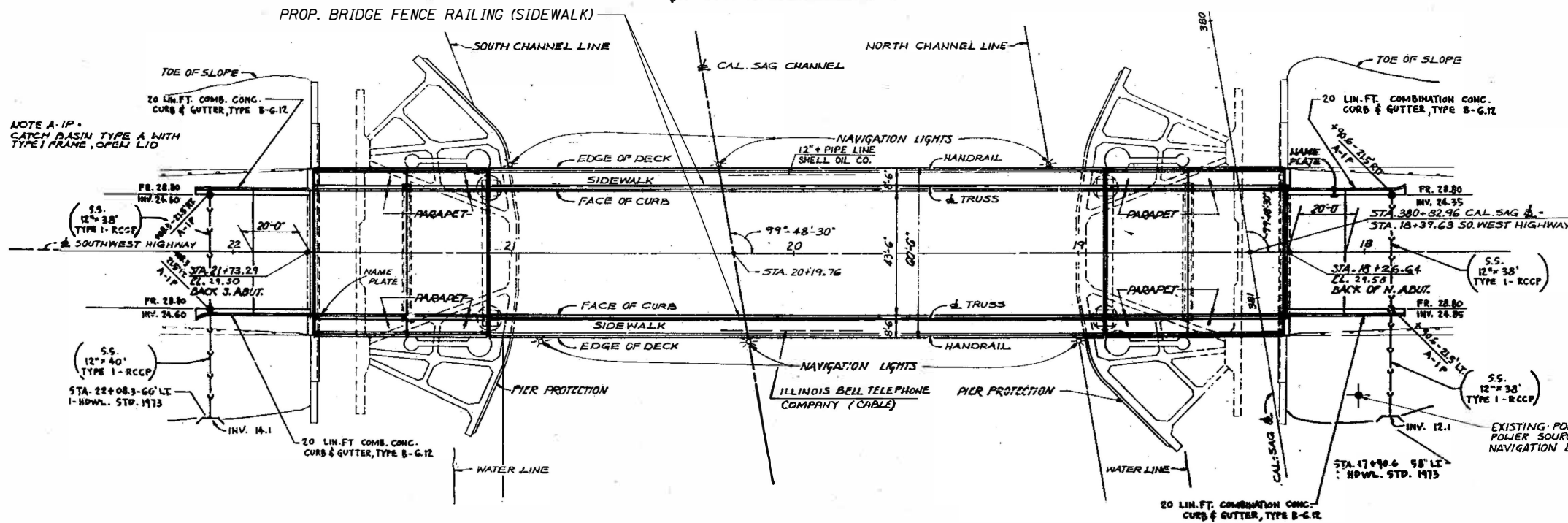
SCALE: SHEET NO. OF SHEETS STA. TO STA.

F.A.U. RTE.	SECTION	COUNTY	TOTAL SHEETS	SHEET NO.
357B	FAU 357B 22 BR	COOK	13	3
FED. ROAD DIST. NO. 1   ILLINOIS FED. AID PROJECT			CONTRACT NO. 62U20	

 REVISED SHEET 6/6/2023  
 Ø 0042



ELEVATION



PLAN  
SCALE 1/4" = 20'



GENERAL NOTES:

Reinforcement Bars designated (E) shall be Epoxy Coated.

Prior to pouring the new concrete deck, all heavy or loose rust, loose mill scale, and other loose or potentially detrimental foreign material shall be removed from the surface in contact with concrete. Tightly adhered paint may remain unless otherwise noted. Removal shall be accomplished by methods that will not damage the steel and the cost will be included in the pay item covering removal of the existing concrete. As directed by the Engineer, existing construction accessories welded to the Truss members within the concrete fillers shall be removed.

The weld areas shall be ground flush and inspected for cracks using Magnetic Particle Testing (MT) or Dye Penetrant Testing (PT) by qualified personnel approved by the Engineer. Any cracks that cannot be removed by grinding 1/4 in. deep shall be identified and reported to the Bureau of Bridges and Structures for further disposition. The cost of removing welded accessories, grinding and inspecting weld areas and grinding cracks will be paid for according to Article 109.04 Of The Standard Specifications.

The existing structural steel coating contains lead. The Contractor shall take appropriate precautions to deal with the presence of lead on this project.

Any reinforcement bars that are damaged during concrete removal operations shall be repaired or replaced using an approved bar splicer or anchorage system. Cost incidental to "Concrete Removal".

Plan dimensions and details relative to existing plans are subject to nominal construction variations. The contractor shall field verify existing dimensions and details affecting new construction and make necessary approved adjustments prior to construction or ordering of materials. Such variations shall not be cause for additional compensation for a change in scope of the work, however, the contractor will be paid for the quantity actually furnished based at the unit price bid for the work.

GENERAL PAINT NOTES:

Cleaning and painting of the existing structural steel shall be as specified in the special provision for "cleaning and painting existing steel structures". All structural steel at the locations shown in the plans and within the limits shown on sheet 3 & 4 of 8 shall be cleaned per commercial grade power tool cleaning - sspc sp15.

The designated areas cleaned per commercial grade power tool cleaning shall be painted according to the requirements of paint system 1 - oz/e/u. The color of the final finish coat for all truss members shall be blue, munsell no 10b 3/6.

A minimum of one (1) air monitor will be required to monitor abrasive operations for all structures. See special provision for "containment and disposal of lead paint cleaning residue"

It shall be the contractor's responsibility to protect and preserve the existing bridge lighting at any location that lighting is encountered adjacent to an area to be cleaned and painted.

TOTAL BILL OF MATERIAL

ITEM	UNIT	TOTAL
Concrete Removal	Cu. Yd.	4.9
Concrete Superstructure	Cu. Yd.	2.2
Protective Coat	Sq. Yd.	15.6
Bridge Fence Railing (Sidewalk)	Foot	432
Containment and Disposal of Lead Paint Cleaning Residues	L. Sum	1
Cleaning and Painting Steel Bridge No. 1	L. Sum	1



Jayme F. Schiff

REVISI<sup>1</sup> SHEET 6/5/2023

USER NAME = naved. hoon	DESIGNED -	REVISED - 1 06/01/2023 NH
PLOT SCALE = 0.1666' / in.	DRAWN -	REVISED -
PLOT DATE = 5/5/2023	CHECKED -	REVISED -
	DATE -	REVISED -

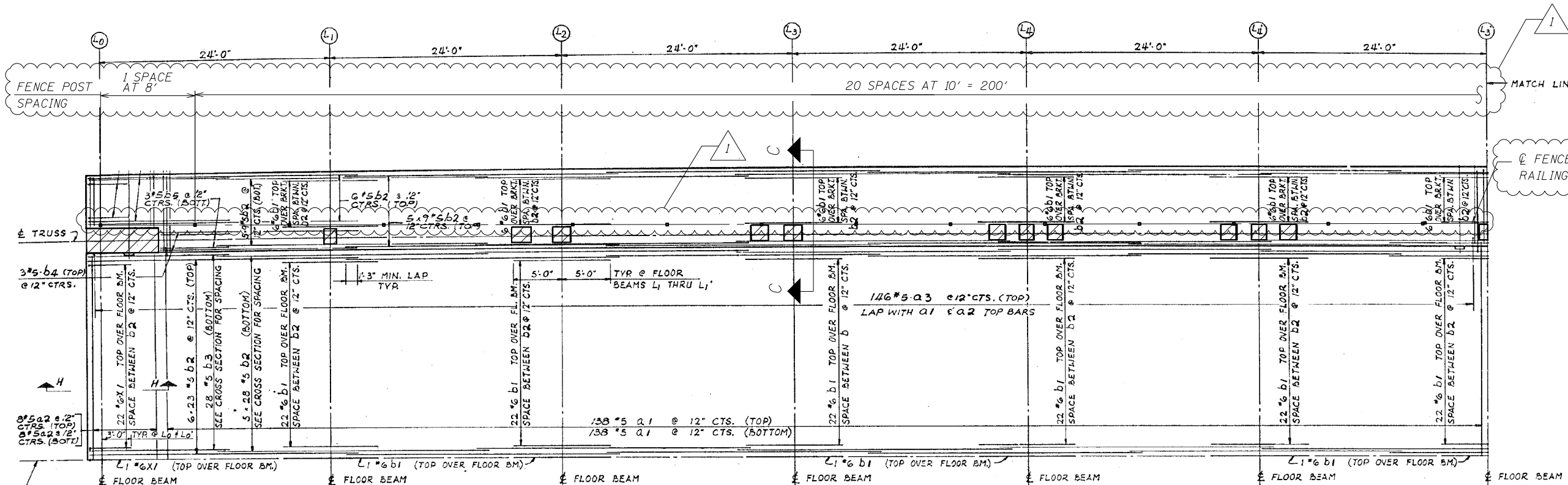
STATE OF ILLINOIS  
DEPARTMENT OF TRANSPORTATION

IL-7 OVER CAL-SAG CHANNEL (016-0464)  
GENERAL PLAN & ELEVATION

SCALE: SHEET 1 OF 8 SHEETS STA. TO STA.

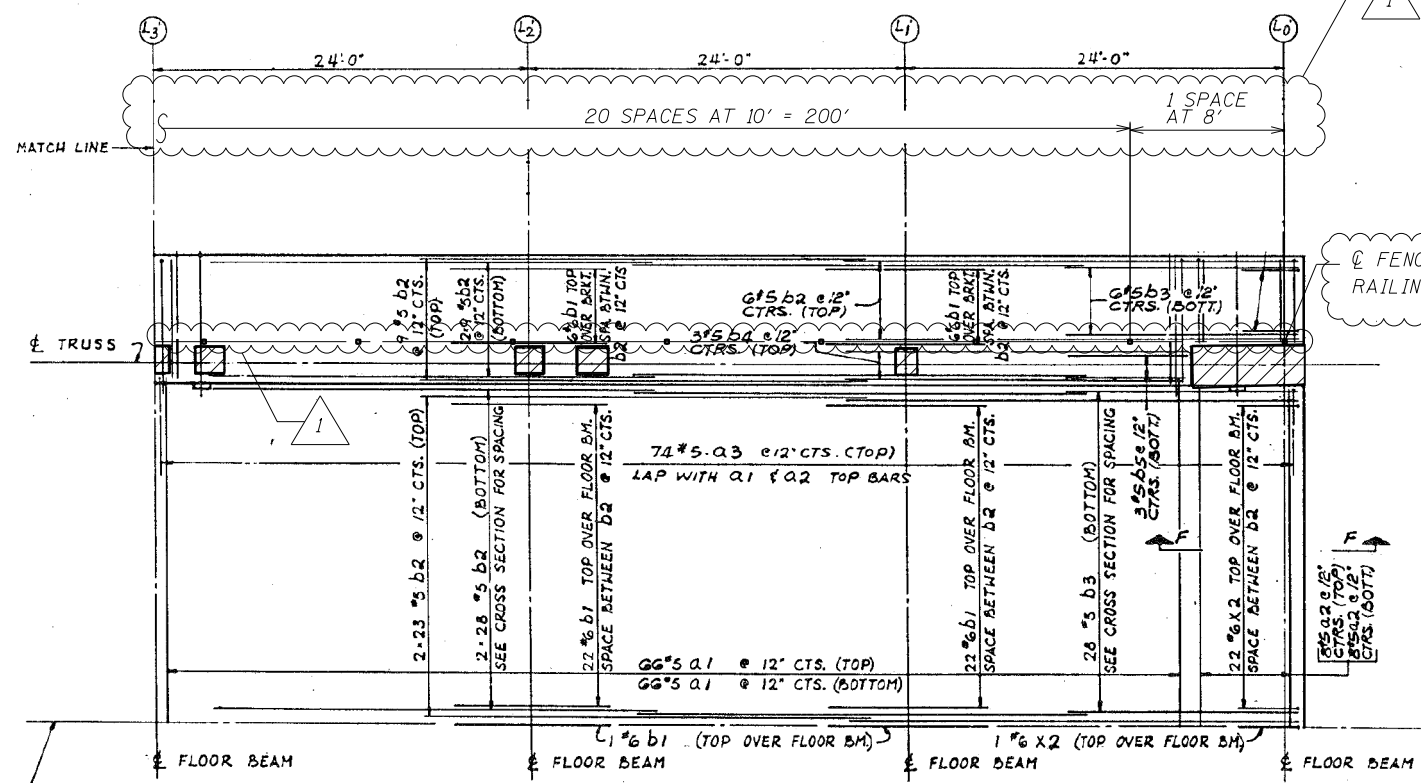
FAU. RTE. 3578	SECTION FAU 3578 22 BR	COUNTY COOK	TOTAL SHEETS 13	SHEET NO. 4
CONTRACT NO. 62U20				ILLINOIS FED. AID PROJECT

MODEL: Default  
FILE NAME: dw \\gis01-cw-bentley.com\pwworking\Documents\DOT - Office\District 1\Projects\ID101423\CADD\Design\shp-plan.dgn



PART PLAN OF DECK REINFORCEMENT - SPAN 3

SCALE: 3/16" = 1'-0"



PART PLAN OF DECK REINFORCEMENT SPAN 3

SCALE: 3/16" = 1'-0"

LEGEND:



BILL OF MATERIAL

Item	Unit	Quantity
Concrete Removal	CU YD	4.9
Concrete Superstructure	CU YD	2.2
Protective Coat	SQ YD	15.6
Bridge Fence Railing (Sidewalk)	Foot	432

REVISED SHEET 6/6/2023

MODEL: D:\default  
 FILE: h:\a\c\p\illinois\paw\_bentley.com\PROJECTS\DOT Documents\DOT Office\Drawings\11\PROJECTS\101423\CADD\DATA\Design\alt-pln.dgn

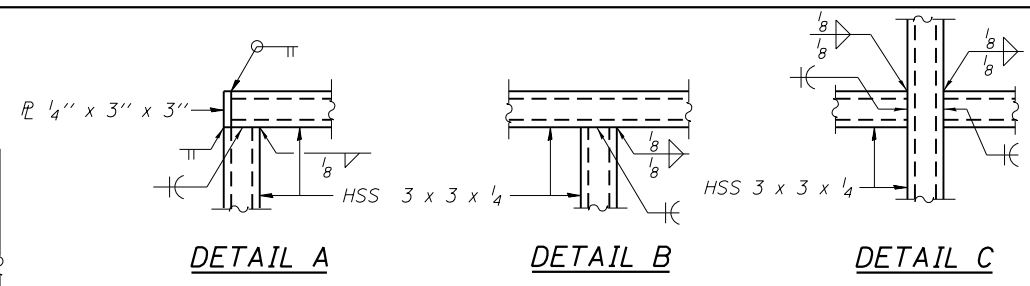
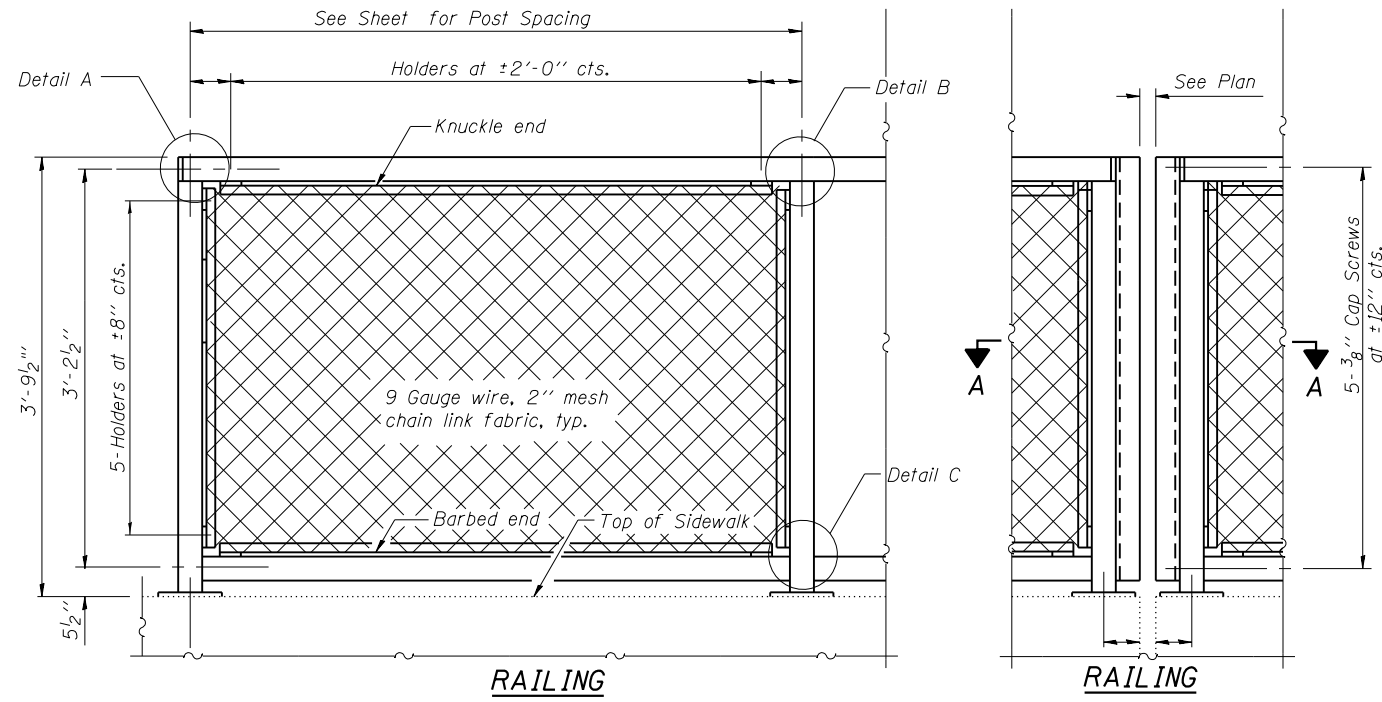
USER NAME = naveed.hassan	DESIGNED -	REVISED - NH 06/1/2023
PLOT SCALE = 0.1667' / in.	DRAWN -	REVISED -
PLOT DATE = 6/2/2023	CHECKED -	REVISED -
	DATE -	REVISED -

STATE OF ILLINOIS  
DEPARTMENT OF TRANSPORTATION

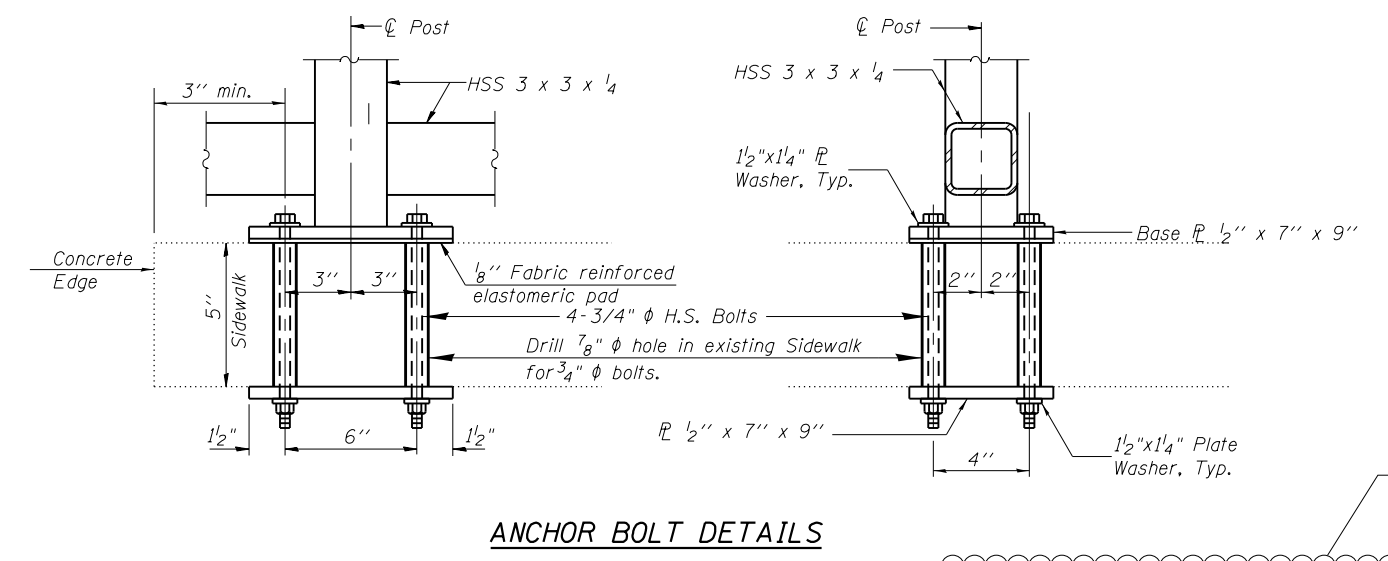
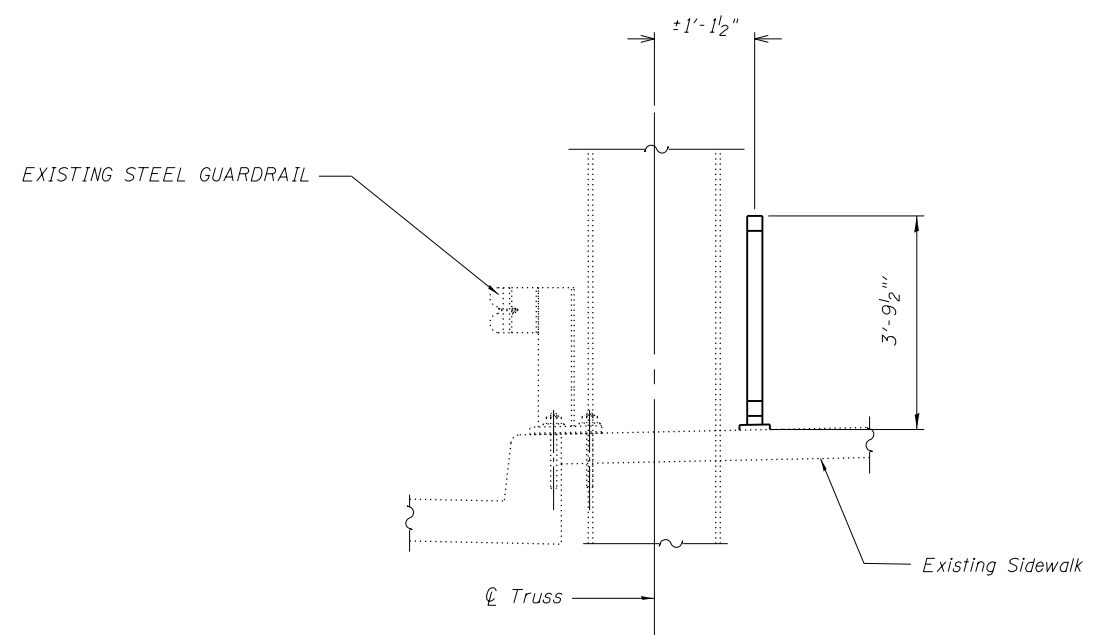
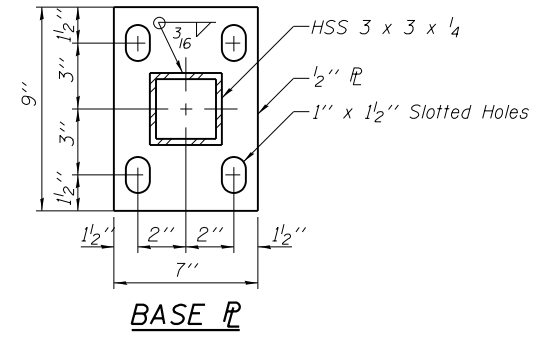
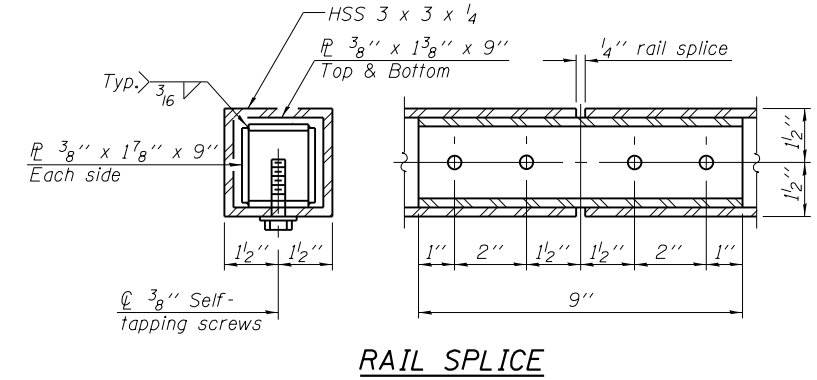
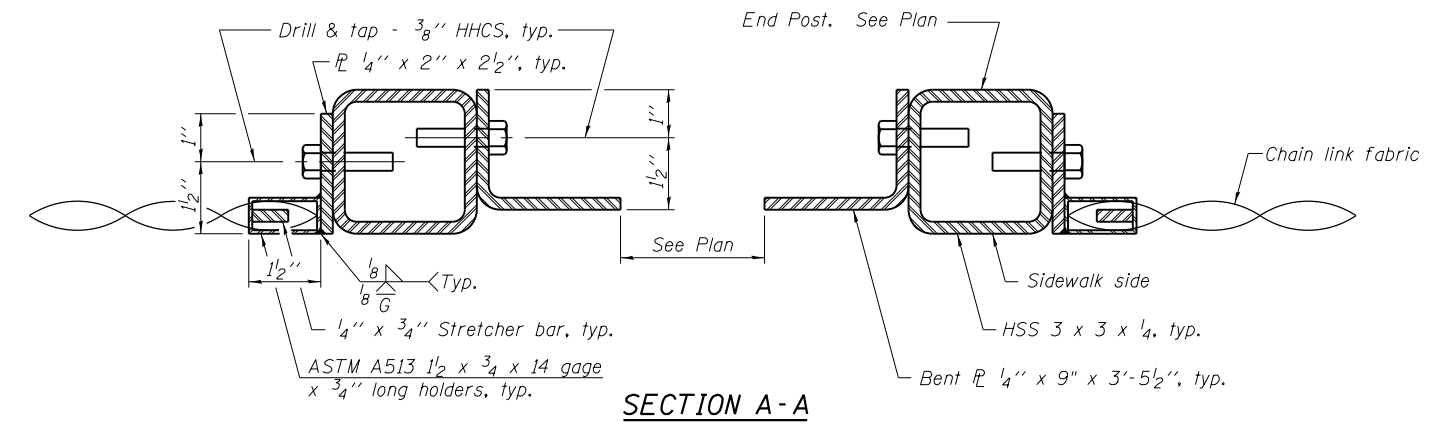
IL-7 OVER CAL-SAG CHANNEL (016-0464)  
DECK PLAN AND DETAILS

SCALE: SHEET 2 OF 8 SHEETS STA. TO STA.

F.A.U. RTE.	SECTION	COUNTY	TOTAL SHEETS	SHEET NO.
3578	FAU 3578 22 BR	COOK	13	5
CONTRACT NO. 62U20				
ILLINOIS FED. AID PROJECT				



All steel rail elements shall be galvanized according to Article 509.05 of the Standard Specifications.



(10'-0" Maximum Post Spacing. Posts shall be placed between truss members's sidewalk openings)

R-29 (MODIFIED)

REVISED SHEET 6/6/2023

MODEL: Default  
FILE: \\nas01\paw.bentley.com\PI\PID\DOT\Documents\DOT Office\Bentley - 1\Projects\101423\CADD\as3\Design\alt-pln.dgn

USER NAME = naveed.hassan	DESIGNED -	REVISED -
	DRAWN -	REVISED -
PLOT SCALE = 0.1667' / in.	CHECKED -	REVISED -
PLOT DATE = 6/5/2023	DATE -	REVISED -

STATE OF ILLINOIS  
DEPARTMENT OF TRANSPORTATION

IL-7 OVER CAL-SAG CHANNEL (016-0464)  
BRIDGE FENCE RAILING (SIDEWALK)

F.A.U. RTE.	SECTION	COUNTY	TOTAL SHEETS	SHEET NO.
3578	FAU 3578 22 BR	COOK	13	8
CONTRACT NO. 62U20				
ILLINOIS FED. AID PROJECT				

SCALE: SHEET 5 OF 8 SHEETS STA. TO STA.