

STATE OF ILLINOIS
DEPARTMENT OF TRANSPORTATION

F.A.I. RTE.	SECTION	COUNTY	TOTAL SHEETS	SHEET NO.
172	(1-5)DR	ADAMS	6	1
		ILLINOIS	CONTRACT NO. 72115	

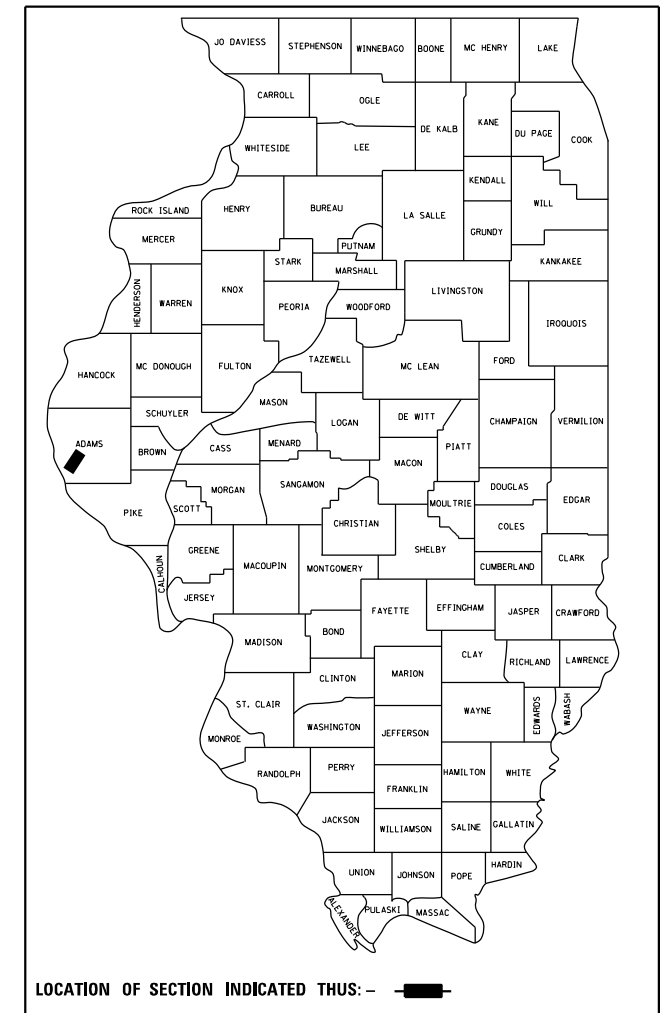
FOR INDEX OF SHEETS, SEE SHEET NO. 2

PROPOSED IMPROVEMENTS

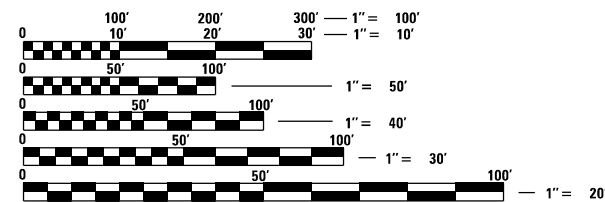
FAI 172 (I-172)
SECTION: (1-5)DR
PROJECT: STATE DRAINAGE
ADAMS COUNTY

C-96-092-22

D-96-080-22



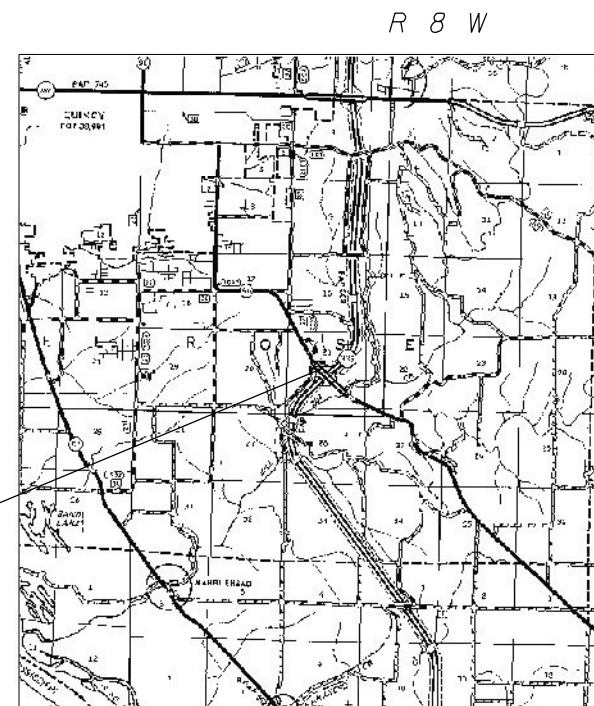
I 55 (2021)
ADT = 4,950
SU = 150
MU = 550



FULL SIZE PLANS HAVE BEEN PREPARED USING STANDARD ENGINEERING SCALES. REDUCED SIZED PLANS WILL NOT CONFORM TO STANDARD SCALES. IN MAKING MEASUREMENTS ON REDUCED PLANS, THE ABOVE SCALES MAY BE USED.

J.U.L.I.E.
JOINT UTILITY LOCATION INFORMATION FOR EXCAVATION
1-800-892-0123
OR 811

PROJECT LOCATION
STA. 56+09.43



PROJECT ENGINEER : MIKE HAMBY - (217)524-7765
PROJECT MANAGER : TIM SHARP - (217)524-9160

CONTRACT NO. 72115

STATE OF ILLINOIS
DEPARTMENT OF TRANSPORTATION

SUBMITTED March 27, 2023

Jeff P. Meyer
REGION FOUR ENGINEER

May 12, 2023 *Scott A. Etkin*
ENGINEER OF DESIGN AND ENVIRONMENT

May 12, 2023 *Stephen M. Smith*
DIRECTOR OF HIGHWAYS PROJECT IMPLEMENTATION

PRINTED BY THE AUTHORITY
OF THE STATE OF ILLINOIS

STATE OF ILLINOIS
DEPARTMENT OF TRANSPORTATION

INDEX OF SHEETS, STANDARDS
GENERAL NOTES, SIGNATURES

SCALE: _____ SHEET _____ OF _____ SHEETS _____ STA. _____ TO STA. _____

SHEET NO.	DESCRIPTION
1.	COVER SHEET
2.	INDEX OF SHEETS, STANDARDS, GENERAL NOTES & SIGNATURE
3.	SUMMARY OF QUANTITIES
4.	PROJECT LOCATION MAP
5.	SCHEDULES
6.	PLAN

STANDARD NO.	DESCRIPTION
000001-08	STANDARD SYMBOLS, ABBREVIATIONS AND PATTERNS
001006	DECIMAL OF AN INCH AND OF A FOOT
701101-05	OFF-RD OPERATIONS, MULTILANE 15' (4.5m) TO 24" (600mm) FROM PAVEMENT EDGE
701106-02	OFF-RD OPERATIONS, MULTILANE, MORE THAN 15' (4.5m) AWAY
701901-08	TRAFFIC CONTROL DEVICES

STATE OF ILLINOIS
DEPARTMENT OF TRANSPORTATION
DIVISION OF HIGHWAYS
DISTRICT 6

<p>EXAMINED _____</p> <p style="text-align: right;">March, 31 20 23</p> <p style="text-align: right; font-size: 10px;">ENGINEER OF OPERATIONS</p>	<p>EXAMINED _____</p> <p style="text-align: right;">March, 31 20 23</p> <p style="text-align: right; font-size: 10px;">ENGINEER OF PROJECT IMPLEMENTATION</p>
<p>EXAMINED _____</p> <p style="text-align: right;">March, 31 20 23</p> <p style="text-align: right; font-size: 10px;">ENGINEER OF PROGRAM DEVELOPMENT</p>	

REV. - MS

FILE NAME =
 S:\CONTRACT\MINT_CA0\7215 - FAI 172 (1172)

USER NAME = Timothy.Sharp
 Oranage - Adams Co (6-16-2023)\PLANS\7215-
 BRM\Location map.dgn

DATE	REVISION
3/24/2023	DESIGNED
	REVIS
	REVIS
	REVIS

STATE OF ILLINOIS
DEPARTMENT OF TRANSPORTATION

SCALE: _____ SHEET _____ OF _____ SHEETS
 LOCATION MAP
 STA. _____ TO STA. _____

F.A.I. RTE.	SECTION	COUNTY	TOTAL SHEETS
172	(1-5)DR	ADAMS	6
			4
CONTRACT NO. 7215			



PROJECT LOCATION
 I 172
 STA. 56+09.43



