

GENERAL NOTES

1. ALL CONSTRUCTION SHALL BE DONE IN ACCORDANCE WITH THE "STANDARD SPECIFICATIONS FOR ROAD AND BRIDGE CONSTRUCTION", ADOPTED JANUARY 1, 2022: THE LATEST EDITION OF THE "ILLINOIS MANUAL ON UNIFORM TRAFFIC CONTROL DEVICES FOR STREETS AND HIGHWAYS" (MUTCD), THE "DETAILS" IN THE PLANS, AND THE "SPECIAL PROVISIONS" INCLUDED IN THE CONTRACT DOCUMENTS.
2. IT IS THE CONTRACTOR'S RESPONSIBILITY TO ASCERTAIN EXISTING FIELD CONDITIONS PRIOR TO BIDDING ON THIS PROJECT.
3. THE CONTRACTOR SHALL LIMIT HIS/HER CONSTRUCTION ACTIVITIES TO THE WORK AREAS DESIGNATED ON THE PLANS. ANY DAMAGE TO AREAS OUTSIDE OF THESE LIMITS SHALL BE REPAIRED BY THE CONTRACTOR TO THE SATISFACTION OF THE ENGINEER.
4. THE CONTRACTOR SHALL NOTIFY JOHN BRUNKE, PUBLIC WORKS DIRECTOR AT 708-957-4100 AT LEAST 48 HOURS IN ADVANCE OF BEGINNING WORK AND COORDINATE ALL CONSTRUCTION OPERATIONS WITH THE ENGINEER.
5. THE CONTRACTOR WILL BE REQUIRED TO RELOCATE OR REMOVE AND REPLACE SIGNS WHICH INTERFERE WITH CONSTRUCTION OPERATIONS, AND TO TEMPORARILY RESET ALL SUCH SIGNS DURING CONSTRUCTION OPERATIONS. IF EXISTING SIGNS ARE DAMAGED DURING THE REMOVAL AND REPLACEMENT PROCESS, THE SIGN SHALL BE REPLACED.
6. THE CONTRACTOR SHALL GIVE NOTICES AND COMPLY WITH APPLICABLE LAWS, ORDINANCES, RULES, REGULATIONS AND LAWFUL ORDERS OF ALL PUBLIC AUTHORITIES BEARING ON SAFETY OF PERSONS OR PROPERTY OR THEIR PROTECTION FROM DAMAGE, INJURY OR LOSS.
7. GEOTECHNICAL FABRIC FOR GROUND STABILIZATION AND/OR AGGREGATE SUBGRADE IMPROVEMENT (CU YD) HAVE BEEN PROVIDED FOR USE AT THE LOCATIONS INDICATED FOR SOILS THAT TEND TO BE UNSTABLE AND/OR UNSUITABLE. THE ACTUAL NEED FOR REMOVAL AND REPLACEMENT WITH ABOVE ITEM WILL BE DETERMINED IN THE FIELD AT THE TIME OF CONSTRUCTION BY THE GEOTECHNICAL ENGINEER. ALL POTENTIALLY UNSTABLE SOILS SHOULD BE TESTED WITH A STATIC OR DYNAMIC CONE PENETROMETER AND TREATED IN ACCORDANCE WITH ARTICLE 301.04 OF THE SSRBC AND IDOT SUBGRADE STABILITY MANUAL. IF UNSTABLE AND/OR UNSUITABLE SOILS ARE NOT ENCOUNTERED, THEN THE QUANTITY SHALL BE DEDUCTED AND NO ADDITIONAL COMPENSATION WILL BE DUE TO THE CONTRACTOR.
8. THE CONTRACTOR SHALL COORDINATE CONSTRUCTION ACTIVITIES WITH ANY OTHER ROADWAY PROJECTS WITHIN THE AREA THAT ARE UNDER CONSTRUCTION AT THE SAME TIME.
9. THE CONTRACTOR SHALL CONTACT KALPANA KANNAN-HOSADURGA, THE DISTRICT ONE TRAFFIC CONTROL SUPERVISOR, AT KALPANA.KANNAN-HOSADURGA@ILLINOIS.GOV A MINIMUM OF 72 HOURS IN ADVANCE OF BEGINNING WORK.
10. THE RESIDENT ENGINEER SHALL CONTACT FADI SULTAN, AREA TRAFFIC FIELD ENGINEER VIA EMAIL AT FADI.SULTAN@ILLINOIS.GOV MINIMUM OF TWO (2) WEEKS PRIOR TO THE PLACEMENT OF PERMANENT PAVEMENT MARKINGS.
11. THE SUBGRADE STABILITY SHALL BE VERIFIED BY PROOF ROLLING WITH A FULLY LOADED TANDEM-AXLE TRUCK. ANY AGGREGATE SUBGRADE IMPROVEMENT CONTAMINATED AND/OR DAMAGED BY THE CONTRACTOR'S VEHICLES AND/OR EQUIPMENTS IS TO BE REMOVED AND REPLACED AS DIRECT BY THE ENGINEER AT CONTRACTOR EXPENSE. THE AGGREGATE GRADATION FOR THE AGGREGATE SUBGRADE IMPROVEMENT 12" LOWER LIFT SHALL BE CS 1 OR RR 1. PIPE UNDERDRAINS SHALL BE INSTALLED ACCORDING TO SECTION 601 OF THE SSRBC AND STANDARD 601001-05. TOP OF PIPE UNDERDRAINS SHALL BE PLACED MINIMUM 6" BELOW THE AGGREGATE SUBGRADE IMPROVEMENT LAYER. THE COST OF MAKING PIPE UNDERDRAINS CONNECTIONS TO DRAINAGE STRUCTURES SHALL BE INCLUDED IN THE COST OF THE PIPE UNDERDRAINS.
12. **UTILITIES**
 (A) ALL UNDERGROUND UTILITY LOCATIONS, INCLUDING BUT NOT LIMITED TO SANITARY AND STORM SEWERS, WATER MAINS AND THEIR RESPECTIVE SERVICE LINES, SHOWN ON THE PLANS ARE APPROXIMATE ONLY. UNDERGROUND FACILITIES REPRESENTS ONLY THE OPINION OF THE VILLAGE, AS TO THE LOCATION OF SUCH UTILITIES AND IS ONLY INCLUDED FOR THE CONVENIENCE OF THE BIDDER. IT SHALL BE THE CONTRACTOR'S RESPONSIBILITY TO HAVE THE RESPECTIVE UTILITY COMPANIES FIELD LOCATE ALL UTILITIES AS NECESSARY, PRIOR TO STARTING CONSTRUCTION. THE CONTRACTOR SHALL NOTIFY J.U.L.I.E. AT (800) 892-0123, AND ALL PUBLIC AND PRIVATE UTILITIES BEFORE STARTING CONSTRUCTION.

(B) THE CONTRACTOR SHALL BE RESPONSIBLE FOR THE PROTECTION OF ALL UNDERGROUND OR SURFACE UTILITIES EVEN THOUGH THEY MAY NOT BE SHOWN ON THE PLANS. ANY UTILITY THAT IS DAMAGED DURING CONSTRUCTION SHALL BE REPAIRED OR REPLACED TO THE SATISFACTION OF THE ENGINEER.

13. **STORM SEWER CONSTRUCTION**
 FRAME ELEVATIONS GIVEN ON THE PLANS ARE ONLY TO ASSIST THE CONTRACTOR IN DETERMINING THE APPROXIMATE OVERALL HEIGHT OF THE STRUCTURE. FRAMES OF ALL NEW, ADJUSTED OR RECONSTRUCTED STRUCTURES WILL BE ADJUSTED TO THE FINAL ELEVATION OF THE AREA IN WHICH THEY ARE LOCATED.

14. **SOIL EROSION AND SEDIMENT CONTROL**
 (A) SOIL EROSION AND SEDIMENT CONTROL (SESC) FEATURES MUST BE CONSTRUCTED PRIOR TO THE COMMENCEMENT OF UPLAND DISTURBANCE. SOIL DISTURBANCE MUST BE PHASED OR ENACTED IN SUCH A MANNER AS TO MINIMIZE EROSION. SOIL STABILIZATION MEASURES MUST CONSIDER THE TIME OF YEAR, SITE CONDITIONS AND THE USE OF TEMPORARY AND/OR PERMANENT MEASURES.

(B) UNLESS OTHERWISE INDICATED, ALL VEGETATIVE AND STRUCTURAL EROSION AND SEDIMENT CONTROL PRACTICES WILL BE INSTALLED AT MINIMUM ACCORDING TO THE STANDARDS AND SPECIFICATIONS IN THE ILLINOIS URBAN MANUAL, REVISED TO LATEST VERSION AS AMENDED. A COPY OF THE APPROVED SOIL EROSION AND SEDIMENT CONTROL (SESC) PLAN MUST BE MAINTAINED ON THE SITE AT ALL TIMES.

(C) THE EROSION AND SEDIMENT CONTROLS SHOWN ON THE PLANS ARE THE MINIMUM REQUIREMENTS. ADDITIONAL MEASURES MAY BE REQUIRED AS DIRECTED BY THE ENGINEER. ALL ADDITIONAL MEASURES MUST BE IN PLACE WITHIN 3 DAYS OF DISTURBANCE AND ANY EMERGENCY SESC MEASURES MUST BE INSTALLED IMMEDIATELY.

(D) THE CONTRACTOR MUST CLEAN UP, GRADE THE WORK AREAS AS THE PROJECT PROGRESSES, AND INSTALL TEMPORARY OR PERMANENT EROSION PROTECTION TO CONTROL SOIL EROSION, OR INSTALL APPROPRIATE SEDIMENT CONTROL DEVICES TO TRAP SEDIMENT. PAVEMENT MUST BE CLEANED DAILY OR AS NECESSARY TO REMOVE TRACK-OUT MATERIAL.

(E) DURING DE-WATERING/PUMPING OPERATIONS, ONLY UNCONTAMINATED WATER SHOULD BE ALLOWED TO DISCHARGE TO PROTECTED NATURAL AREAS, WATERS OF THE STATE, OR TO A STORM SEWER SYSTEM (IN ACCORDANCE WITH LOCAL PERMITS). INLET HOSES SHOULD BE FLOATED AT THE SURFACE OF THE WATER IN ORDER TO LIMIT THE AMOUNT OF SEDIMENT INTAKE. PUMPING OPERATIONS MAY BE DISCHARGED TO A STABILIZED AREA THAT CONSISTS OF AN ENERGY DISSIPATING DEVICE (E.G., STONE), SEDIMENT FILTER BAG, OR BOTH. ADEQUATE EROSION AND SEDIMENT CONTROLS SHOULD BE USED DURING DE-WATERING OPERATIONS AS NECESSARY. DEWATERING SEDIMENT LADEN WATER DIRECTLY INTO FIELD TILES, STORM WATER STRUCTURES, OR "WATERS OF THE US" IS PROHIBITED.

(F) CONSTRUCTION ACTIVITIES MUST BE SCHEDULED TO MINIMIZE THE TIME SOIL IS EXPOSED AND UNPROTECTED. IN NO CASE WILL THE EXISTING VEGETATION BE DESTROYED, REMOVED, OR DISTURBED MORE THAN FOURTEEN (14) DAYS PRIOR TO THE INITIATION OF IMPROVEMENTS.

(G) ALL DISTURBED SOILS ARE TO BE STABILIZED, TEMPORARILY OR PERMANENTLY, WITHIN SEVEN (7) DAYS OF CONSTRUCTION ACTIVITY HAVING CEASED IF THE SOIL IS TO REMAIN UNDISTURBED FOR MORE THAN FOURTEEN (14) DAYS.

(H) ALL NITROGEN, PHOSPHOROUS AND POTASSIUM FERTILIZER NUTRIENTS HAVE BEEN INTENTIONALLY OMITTED FROM THE CONTRACT ON THE SODDING APPLICATION.

INDEX OF SHEETS

- 1 COVER SHEET
- 2 INDEX OF SHEETS, HIGHWAY STANDARDS, DISTRICT 1 DETAILS, COMMITMENTS AND GENERAL NOTES
- 3-6 SUMMARY OF QUANTITIES
- 7 TYPICAL SECTIONS
- 8 EARTHWORK SCHEDULE
- 9 ALIGNMENTS, TIES AND BENCHMARKS
- 10 EXISTING CONDITIONS AND REMOVAL PLAN
- 11 PROPOSED PLAN AND PROFILE
- 12 DETOUR PLAN
- 13 EROSION CONTROL PLAN
- 14-28 BRIDGE PLANS
- 29 BORING LOGS (BRIDGE)
- 30-34 BOX CULVERT PLANS
- 35 BORING LOGS (BOX CUVERT)
- 36-37 CONSTRUCTION DETAILS
- 38 - 42 DISTRICT ONE DETAILS
- 43 - 44 CROSS SECTIONS

HIGHWAY STANDARDS

- 000001 - 08 STANDARD SYMBOLS, ABBREVIATIONS AND PATTERNS
- 280001 - 07 TEMPORARY EROSION CONTROL SYSTEMS
- 424016 - 05 MID-BLOCK CURB RAMPS FOR SIDEWALKS
- 515001 - 04 NAME PLATE FOR BRIDGES
- 601001 - 05 PIPE UNDERDRAINS
- 606001 - 08 CONCRETE CURB TYPE B AND COMBINATION CONCRETE CURB AND GUTTER
- 630001 - 12 STEEL PLATE BEAM GUARDRAIL
- 701005 - 05 OFF-ROAD OPERATIONS, 2L, 2W, 15' TO 24" FROM PAVEMENT EDGE
- 701301 - 04 LANE CLOSURE, 2L, 2W, SHORT TIME OPERATIONS
- 701311 - 03 LANE CLOSURE, 2L, 2W, MOVING OPERATIONS - DAY ONLY
- 701501 - 06 URBAN LANE CLOSURE, 2L, 2W, UNDIVIDED
- 701801 - 06 SIDEWALK, CORNER OR CROSSWALK CLOSURE
- 701901 - 08 TRAFFIC CONTROL DEVICES
- 720001 - 01 SIGN PANEL MOUNTING DETAILS
- 728001 - 01 TELESCOPING STEEL SIGN SUPPORT
- 630101 - 10 STRONG POST GUARDRAIL ATTACHED TO CULVERT

DISTRICT ONE DETAILS

- BD-01 DRIVEWAY DETAIL - DISTANCE BETWEEN R.O.W. AND FACE OF CURB & EDGE OF SHOULDER GREATER OR EQUAL TO 15' (4.5 m)
- BD-32 BUTT JOINTS AND HMA TAPER
- TC-10 TRAFFIC CONTROL AND PROTECTION FOR SIDE ROADS, INTERSECTIONS, AND DRIVEWAYS
- TC-13 DISTRICT ONE TYPICAL PAVEMENT MARKINGS
- TC-21 DETOUR SIGNING FOR CLOSING STATE HIGHWAYS

COMMITMENTS

NONE

FILE NAME =	USER NAME = dconnell	DESIGNED -	REVISED - <i>Revised 5-31-23</i>	STATE OF ILLINOIS DEPARTMENT OF TRANSPORTATION	BROOKWOOD DRIVE BRIDGE REPLACEMENT INDEX OF SHEETS, HIGHWAY STANDARDS, DISTRICT 1 DETAILS, COMMITMENTS AND GENERAL NOTES	MUN. RATE =	SECTION	COUNTY	TOTAL SHEETS	SHEET NO.	
N:\V\ossmor-1228394\1\A07.220309_01.dwg		DRAWN -	REVISED -			4115	15-00048-00-BR	COOK	44	2	
Default		CHECKED -	REVISED -			SCALE: SHEET OF SHEETS STA. TO STA.		CONTRACT NO. 61J38			
		DATE -	REVISED -			[ILLINOIS] FED. AID PROJECT					

SPECIALTY	SPECIAL PROVISION	CODED PAY ITEM NO.	ITEM	UNIT	TOTAL QUANTITY	CONSTRUCTION CODE ITEP FUNDS 80% FEDS / 20% STATE	
						BRIDGE REPLACEMENT 0010 URBAN	TRAINEES 0042 URBAN
		20101000	TEMPORARY FENCE	FOOT	60	60	
X		20101200	TREE ROOT PRUNING	EACH	2	2	
X		20101350	TREE PRUNING (OVER 10 INCH DIAMETER)	EACH	24	24	
		20200100	EARTH EXCAVATION	CU YD	43	43	
		20201200	REMOVAL AND DISPOSAL OF UNSUITABLE MATERIAL	CU YD	18	18	
		20300100	CHANNEL EXCAVATION	CU YD	100	100	
		20900110	POROUS GRANULAR BACKFILL	CU YD	470	470	
		21001000	GEOTECHNICAL FABRIC FOR GROUND STABILIZATION	SQ YD	30	30	
		21101615	TOPSOIL FURNISH AND PLACE, 4"	SQ YD	230	230	
		25200110	SODDING, SALT TOLERANT	SQ YD	230	230	
	*	25200200	SUPPLEMENTAL WATERING	UNIT	13	13	
		28000250	TEMPORARY EROSION CONTROL SEEDING	POUND	5	5	
		28000400	PERIMETER EROSION BARRIER	FOOT	350	350	
		28000510	INLET FILTERS	EACH	2	2	
		28100107	STONE RIPRAP, CLASS A4	SQ YD	275	275	
		28200200	FILTER FABRIC	SQ YD	75	75	
	*	30300001	AGGREGATE SUBGRADE IMPROVEMENT	CU YD	20	20	
	*	30300112	AGGREGATE SUBGRADE IMPROVEMENT 12"	SQ YD	636	636	
		40600275	BITUMINOUS MATERIALS (PRIME COAT)	POUND	740	740	
		40600290	BITUMINOUS MATERIALS (TACK COAT)	POUND	740	740	
		40600982	HOT-MIX ASPHALT SURFACE REMOVAL - BUTT JOINT	SQ YD	55	55	

X = SPECIALTY ITEM

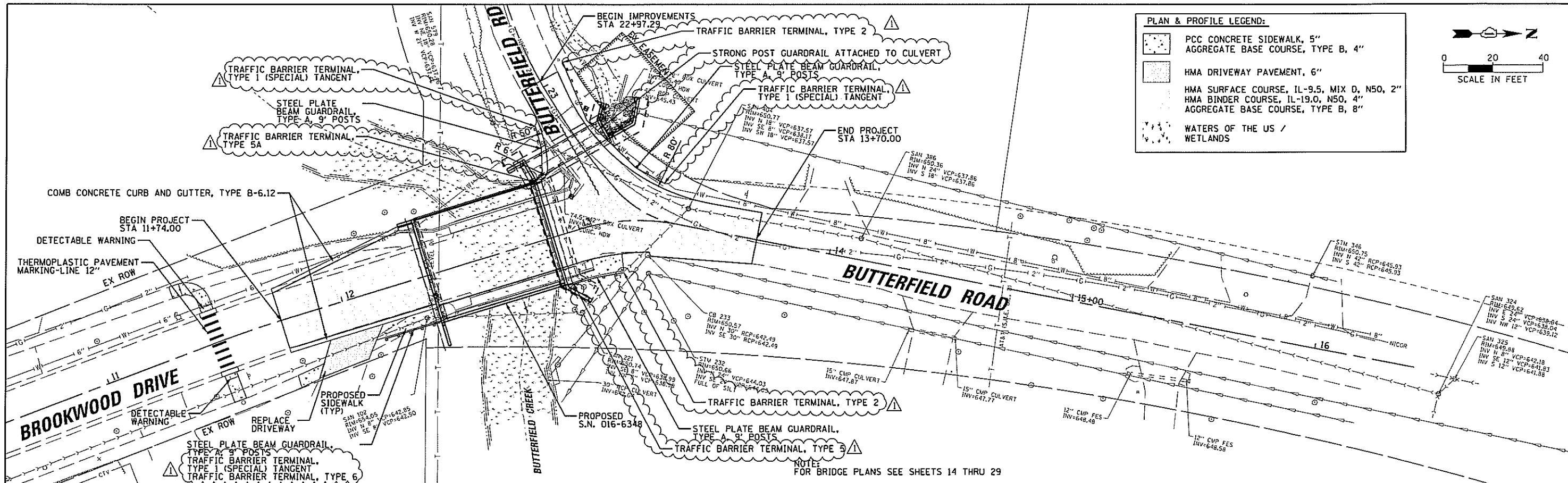
SPECIALTY	SPECIAL PROVISION	CODED PAY ITEM NO.	ITEM	UNIT	TOTAL QUANTITY	CONSTRUCTION CODE ITEP FUNDS 80% FEDS / 20% STATE	
						BRIDGE REPLACEMENT 0010 URBAN	TRAINEES 0042 URBAN
		50800205	REINFORCEMENT BARS, EPOXY COATED	POUND	13860	13860	
X		50900105	ALUMINUM RAILING, TYPE L	FOOT	45	45	
X		50901050	STEEL RAILING, TYPE SM	FOOT	51	51	
		51201600	FURNISHING STEEL PILES HP12X53	FOOT	451	451	
		51202305	DRIVING PILES	FOOT	451	451	
		51203600	TEST PILE STEEL HP12X53	EACH	2	2	
		51500100	NAME PLATES	EACH	1	1	
		52200020	TEMPORARY SOIL RETENTION SYSTEM	SQ FT	250	250	
		54010704	PRECAST CONCRETE BOX CULVERTS 7' X 4'	FOOT	37	37	
		58100200	WATERPROOFING MEMBRANE SYSTEM	SQ YD	210	210	
		59100100	GEOCOMPOSITE WALL DRAIN	SQ YD	175	175	
		60108204	PIPE UNDERDRAINS, TYPE 2, 4"	FOOT	420	420	
		60146304	PIPE UNDERDRAINS FOR STRUCTURES 4"	FOOT	120	120	
		60250200	CATCH BASINS TO BE ADJUSTED	EACH	1	1	
		60255500	MANHOLES TO BE ADJUSTED	EACH	2	2	
		60603800	COMBINATION CONCRETE CURB AND GUTTER, TYPE B-6.12	FOOT	135	135	
		63000003	STEEL PLATE BEAM GUARDRAIL, TYPE A, 9 FOOT POSTS	FOOT	140	140	
X		63000030	STRONG POST GUARDRAIL ATTACHED TO CULVERT	FOOT	15	15	
X		63100045	TRAFFIC BARRIER TERMINAL, TYPE 2	EACH	2	2	
X		63100070	TRAFFIC BARRIER TERMINAL, TYPE 5	EACH	1	1	
X		63100075	TRAFFIC BARRIER TERMINAL, TYPE 5A	EACH	1	1	
X		63100085	TRAFFIC BARRIER TERMINAL, TYPE 6	EACH	1	1	
X		63100167	TRAFFIC BARRIER TERMINAL, TYPE 1 (SPECIAL) TANGENT	EACH	3	3	
		63200310	GUARDRAIL REMOVAL	FOOT	115	115	
X		66900200	NON-SPECIAL WASTE DISPOSAL	CU YD	150	150	

X = SPECIALTY ITEM

FILE NAME =	USER NAME = dcoconnell	DESIGNED -	REVISED - REVISED 05-31-2023	STATE OF ILLINOIS DEPARTMENT OF TRANSPORTATION	BROOKWOOD DRIVE BRIDGE REPLACEMENT SUMMARY OF QUANTITIES			MUN. RTE.	SECTION	COUNTY	TOTAL SHEETS	SHEET NO.
N:\flossmap\220309\C:\v11\500.220309_03.ht	DRAWN -	REVISED -	4115					15-00048-00-BR	COOK	44	5	
PLOT SCALE = 40'	CHECKED -	REVISED -	CONTRACT NO. 61J38									
PLOT DATE = 5/31/2023	DATE -	REVISED -	[ILLINOIS] FED. AID PROJECT									
Default				SCALE:	SHEET	OF	SHEETS	STA.	TO	STA.		

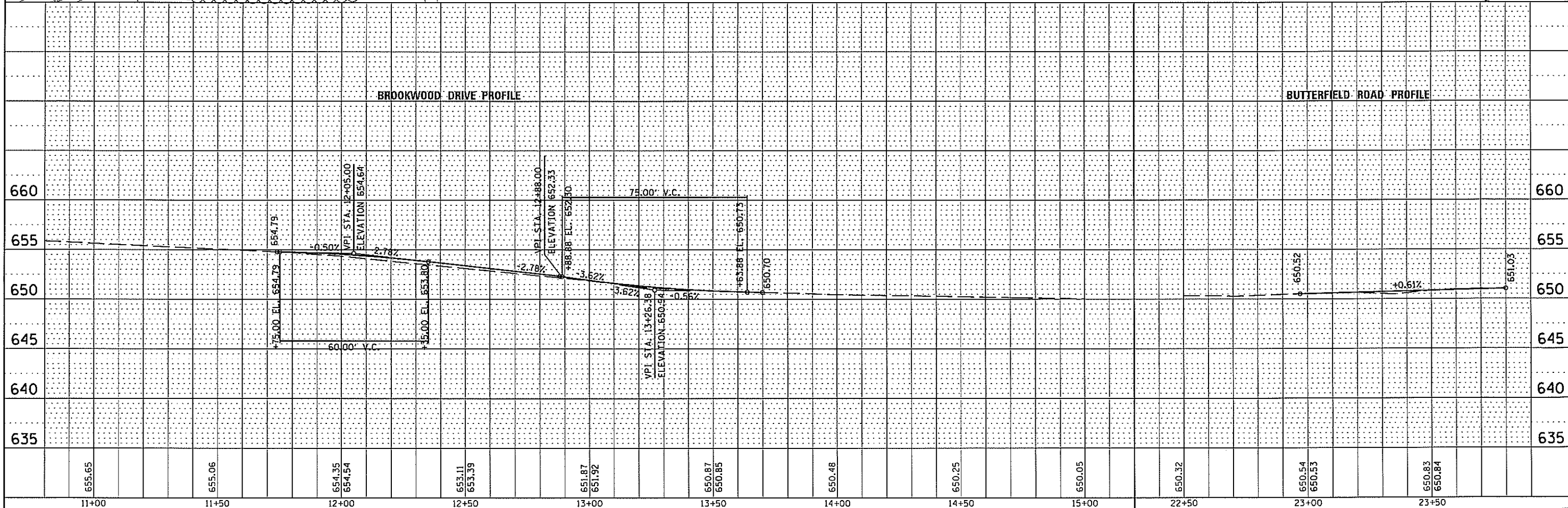
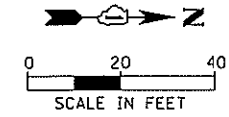
DATE	
BY	
PLAN	
SUBMITTED	
PLOTTED	
NOTED	
NO. BOOK	
CHECKED	
BY	
DATE	
FILE NAME	

DATE	
BY	
PROFILE	
SUBMITTED	
PLOTTED	
NOTED	
NO. BOOK	
CHECKED	
BY	
DATE	
FILE NAME	

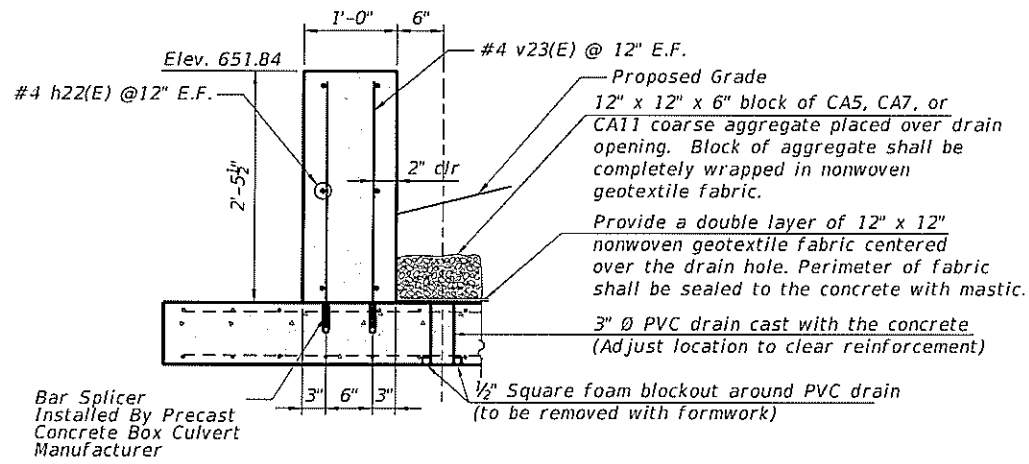


PLAN & PROFILE LEGEND:

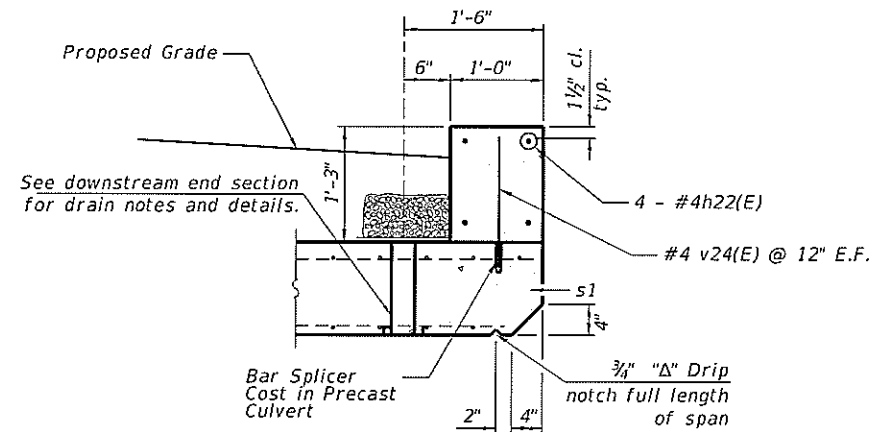
- PCC CONCRETE SIDEWALK, 5"
- AGGREGATE BASE COURSE, TYPE B, 4"
- HMA DRIVEWAY PAVEMENT, 6"
- HMA SURFACE COURSE, IL-9.5, MIX D, N50, 2"
- HMA BINDER COURSE, IL-19.0, N50, 4"
- AGGREGATE BASE COURSE, TYPE B, 8"
- WATERS OF THE US / WETLANDS



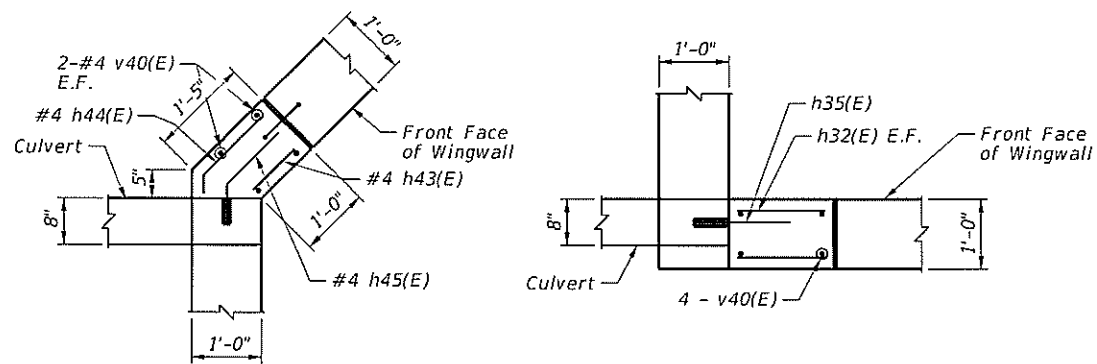
FILE NAME :	USER NAME :	DESIGNED :	REVISED :	STATE OF ILLINOIS DEPARTMENT OF TRANSPORTATION		BROOKWOOD DRIVE BRIDGE REPLACEMENT PLAN AND PROFILE		MUN. RTE.	SECTION	COUNTY	TOTAL SHEETS	SHEET NO.
Default								4115	15-00048-00-BR		44	11
PLOT SCALE : 40'				SCALE :		SHEET OF SHEETS		CONTRACT NO. 61J38		ILLINOIS FED. AID PROJECT		
PLOT DATE : 6/1/2023				DATE :		STA. TO STA.						



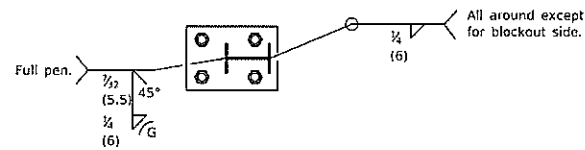
HEADWALL SECTION
(Downstream End)



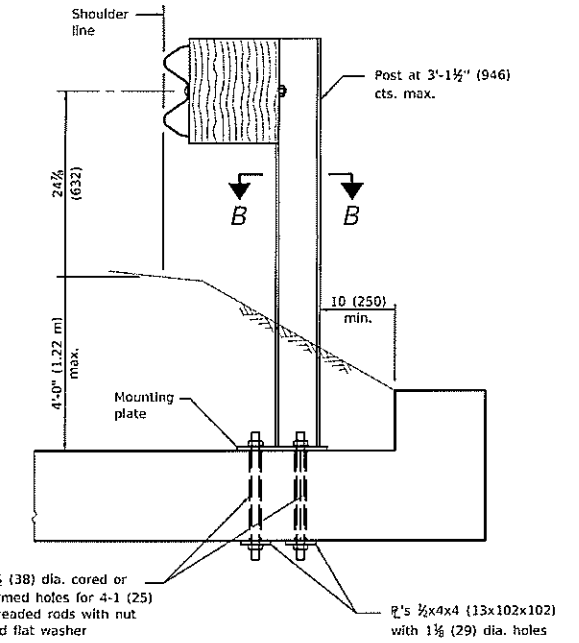
HEADWALL SECTION
(Upstream End)



CORNER DETAILS
(Upstream End)

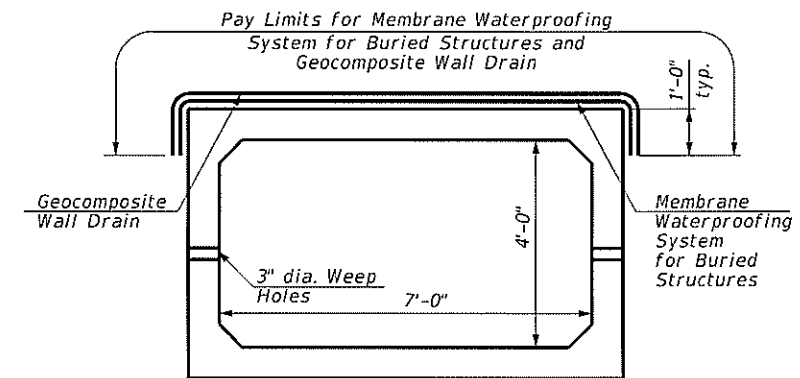


SECTION B-B



Note:
Paid for as Strong Post Guardrail Attached to Culvert.
See Hwy Std 630101-10 for additional details

RAIL POST CONNECTION DETAIL



MEMBER WATERPROOFING FOR BURIED STRUCTURES

MODEL: beahb; FILE NAME: H:\Missouri\12000\Structure\12200109-Culvert-Det-03.dwg

USER NAME = dconnell	DESIGNED - MM	REVISED - REVISED 06-01-2023
PLOT SCALE =	DRAWN - MYG	REVISED -
PLOT DATE = 5/2/2023	CHECKED - JGS	REVISED -
	DATE -	REVISED -

STATE OF ILLINOIS
DEPARTMENT OF TRANSPORTATION

BROOKWOOD DRIVE BRIDGE REPLACEMENT
PROPOSED BOX CULVERT - CULVERT DETAILS

SCALE: SHEET C-5 OF C-6 SHEETS STA. TO STA.

MUN. RTE.	SECTION	COUNTY	TOTAL SHEETS	SHEET NO.
4115	14-00086-00-BR	COOK	44	34
CONTRACT NO. 61J38			ILLINOIS FED. AID PROJECT	