

GENERAL NOTES:

- These plans are for fabrication of the structural steel and bearings. All work shown related to the Beam and Bearing Erection Contract (62R28) is for information only. It is not included in this contract, and is identified as "For Information Only"
- Fasteners shall be ASTM F3125 Grade A325 Type 1, mechanically galvanized bolts in metalized areas. Bolts $\frac{7}{8}$ " diameter, holes $\frac{1}{16}$ " diameter, unless otherwise noted.
- Calculated weight of Structural Steel
 Stage I WB Grade 50 = 319,100 lbs Stage I EB Grade 50 = 319,100 lbs
 Stage I WB Grade 36 = 20,540 lbs Stage I EB Grade 36 = 20,540 lbs
 Stage II WB Grade 50 = 265,910 lbs Stage II EB Grade 50 = 319,120 lbs
 Stage II WB Grade 36 = 20,390 lbs Stage II EB Grade 36 = 24,570 lbs
- All new structural steel shall be metalized. See Special Provision for "Metalizing of Structural Steel."
- No field welding is permitted except as specified in the contract documents.
- The metalized areas shall be painted with System 1. Exterior fascia and bottom of bottom flange areas shall be metalized and shop painted (System 3). See special provision for "Metalizing of Structural Steel." The color of the final finish coat of the paint shall be Reddish Brown, Munsell No. 2.5 YR 3/4.

7. The structural steel and bearings shall be delivered as noted below to the satisfaction of the Engineer or the scheduled shipping date provided by the erection Contractor per article 505.09(b) of the IDOT Standard Specifications.

June 2, 2025 - Beams 1E through 6E (SN 099-8316) and 6W through 11W (SN 099-8317)
 May 11, 2026 - Beams 7E through 12E (SN 099-8316)
 August 10, 2026 - Beams 1W through 5W (SN 099-8317)

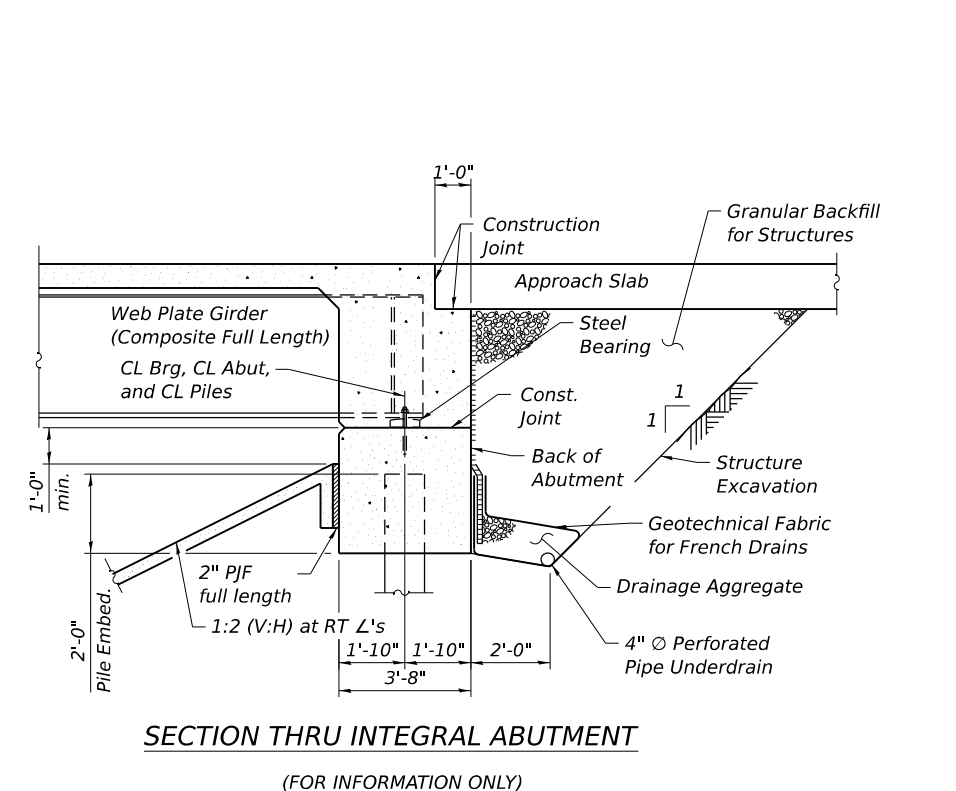
8. Refer to Article 505.09 for requirements of steel work occurring under separate contract.

INDEX OF SHEETS:

- SDA-1 General Plan and Elevation
- SDA-2 General Notes, Index of Sheets & Bill of Material
- SDA-3 Stage Construction Cross Sections
- SDA-4 Top of Slab Elevation Plan
- SDA-5 Top of Slab Elevation (1 of 9)
- SDA-6 Top of Slab Elevation (2 of 9)
- SDA-7 Top of Slab Elevation (3 of 9)
- SDA-8 Top of Slab Elevation (4 of 9)
- SDA-9 Top of Slab Elevation (5 of 9)
- SDA-10 Top of Slab Elevation (6 of 9)
- SDA-11 Top of Slab Elevation (7 of 9)
- SDA-12 Top of Slab Elevation (8 of 9)
- SDA-13 Top of Slab Elevation (9 of 9)
- SDA-14 WB Deck Reinforcement Plan
- SDA-15 EB Deck Reinforcement Plan
- SDA-16 EB Parapet Elevation
- SDA-17 WB Parapet Elevation and Deck Details
- SDA-18 Deck Diaphragm Elevation
- SDA-19 Deck Diaphragm Details
- SDA-20 WB & EB Framing Plan
- SDA-21 Girder Elevation and Steel Details
- SDA-22 Moment and Reaction Table
- SDA-23 Splice and Camber Details
- SDA-24 Bearing Details

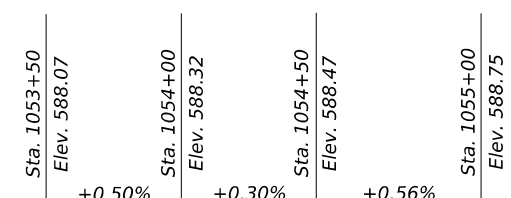
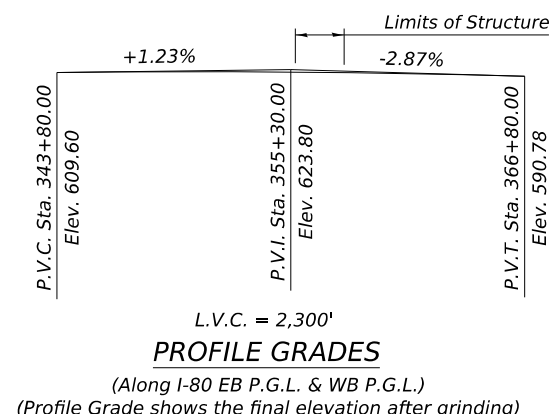
TOTAL BILL OF MATERIAL

ITEM	UNIT	WB SUPER	WB SUB	EB SUPER	EB SUB	TOTAL
Furnishing Structural Steel	L. Sum	0.5	-	0.5	-	1
Storage of Structural Steel	CAL DA	30	-	30	-	60
Furnishing High Load Multi-Rotational Bearings, Disc, Guided Expansion - 400K	EACH	11	-	12	-	23
Storage of High Load Multi-Rotational Bearings	CAL DA	30	-	30	-	60



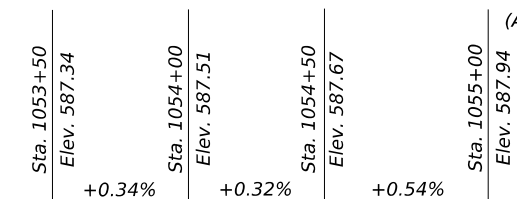
CURVE DATA

(Ramp CC)
 Curve PR_CC-06
 P.I. Sta. = 16+94.38
 $\Delta = 6^{\circ} 38' 27''$ (RT)
 $D = 4^{\circ} 52' 20''$
 $R = 1,176.00'$
 $T = 68.23'$
 $L = 136.30'$
 $E = 1.98'$
 $e = 4.90\%$
 $T.R. = N/A$
 $S.E. Run = 72'$
 $P.C. Sta. = 16+26.15$
 $P.T. Sta. = 17+62.45$
 Design Speed = 40 m.p.h.



PROFILE GRADES

(Along Existing I-55 NB P.G.L.)



PROFILE GRADES

(Along Existing I-55 SB P.G.L.)

**STATE OF ILLINOIS
 DEPARTMENT OF TRANSPORTATION**

**GENERAL NOTES, INDEX OF SHEETS & BILL OF MATERIAL
 STRUCTURE NO. 099-8316 & 099-8317**

SHEET SDA-02 OF SDA-24 SHEETS

REVISED SHEET 5/26/2023

	USER NAME = dschris_	DESIGNED - DTS	REVISED - DTS 5/23/23
	PLOT SCALE =	CHECKED - RJT	REVISED -
	PLOT DATE = 5/19/2023	DRAWN - DTS	REVISED -
		CHECKED - RJT	REVISED -

F.A.I. RTE.	SECTION	COUNTY	TOTAL SHEETS	SHEET NO.
80	FAI 80 22 FABRICATION	WILL	26	4
CONTRACT NO. 62U26				

ILLINOIS FED. AID PROJECT