

|          |                  |                  |
|----------|------------------|------------------|
| COUNTY   | JOHNSON          | JOHNSON          |
| ROUTE    | FAP 885 (IL 146) | FAP 885 (IL 146) |
| FUNDING  | 80% FED, 20% ST  | 80% FED, 20% ST  |
| LOCATION | RURAL            | RURAL            |

| CODE NO. | ITEM  | UNIT  | TOTAL QUANTITY              |                             |                      |
|----------|---|-------|-----------------------------|-----------------------------|----------------------|
|          |   |       |                             | ROADWAY<br>CTC-0004         | LIGHTING<br>CTC-0021 |
| 20100110 | TREE REMOVAL (6 TO 15 UNITS DIAMETER)       | UNIT  | 34                          | 34                          |                      |
| 20100210 | TREE REMOVAL (OVER 15 UNITS DIAMETER)       | UNIT  | 204                         | 204                         |                      |
| 20200100 | EARTH EXCAVATION                            | CU YD | 17,240<br><del>17,515</del> | 17,240<br><del>17,515</del> | ⚠                    |
| 20200200 | ROCK EXCAVATION                             | CU YD | 335                         | 335                         |                      |
| 20201200 | REMOVAL AND DISPOSAL OF UNSUITABLE MATERIAL | CU YD | 373                         | 373                         |                      |
| 20400800 | FURNISHED EXCAVATION                        | CU YD | 2,145<br><del>1,940</del>   | 2,145<br><del>1,940</del>   | ⚠                    |
| 20700220 | POROUS GRANULAR EMBANKMENT                  | CU YD | 6,456                       | 6,456                       |                      |
| 20800150 | TRENCH BACKFILL                             | CU YD | 1,662                       | 1,662                       |                      |
| 25000100 | SEEDING, CLASS 1                            | ACRE  | 7.5                         | 7.5                         |                      |
| 25000350 | SEEDING, CLASS 7                            | ACRE  | 7.5                         | 7.5                         |                      |
| 25000400 | NITROGEN FERTILIZER NUTRIENT                | POUND | 673                         | 673                         |                      |
| 25000500 | PHOSPHORUS FERTILIZER NUTRIENT              | POUND | 673                         | 673                         |                      |
| 25000600 | POTASSIUM FERTILIZER NUTRIENT               | POUND | 673                         | 673                         |                      |
| 25100115 | MULCH, METHOD 2                             | ACRE  | 7.5                         | 7.5                         |                      |
| 25100630 | EROSION CONTROL BLANKET                     | SQ YD | 3,190                       | 3,190                       |                      |

MODEL: D:\p\it...  
 FILE NAME: I:\p\220088 - IDOT PTB 196 Item 611220088.017 - IL 146 Phase II\CADD\Creation\CADD Drawings\09220088.017-sht-500.dgn



USER NAME = roshan.pokhrel  
 PLOT SCALE = 2.0000' / in.  
 PLOT DATE = 4/11/2023

DESIGNED -  
 DRAWN -  
 CHECKED -  
 DATE -

REVISED -  
 REVISED -  
 REVISED -  
 REVISED -

**STATE OF ILLINOIS  
DEPARTMENT OF TRANSPORTATION**

**SUMMARY OF QUANTITIES**

SCALE: SHEET 1 OF 14 SHEETS STA. TO STA.

|                    |               |         |                           |           |
|--------------------|---------------|---------|---------------------------|-----------|
| F.A.P. RTE.        | SECTION       | COUNTY  | TOTAL SHEETS              | SHEET NO. |
| 885                | 110(W-2,R5-5) | JOHNSON | 159                       | 4         |
| CONTRACT NO. 78524 |               |         | ILLINOIS FED. AID PROJECT |           |

⚠ REVISED SHEET 6/5/2023

**STORM SEWER SCHEDULE**

| STATION                  | STATION | O/S | TRENCH BACKFILL | INLET & PIPE PROTECT | PRC FLAR END SEC 15 | STORM SEW CL A 1 15 | STORM SEW CL A 1 18 | STORM SEW CL A 1 24 | STORM SEW CL A 2 12 | STORM SEW CL A 2 15 | STORM SEW CL A 2 18 | STORM SEW CL A 2 24 | MAN TA 4 DIA T3F&G | MAN TA 5 DIA T3F&G | MAN TA 7 DIA T1F CL | MAN TA 8 DIA T3F&G | INLETS TA T8G | INLETS TB T3F&G | INLETS TB T8G | INLETS TB T9F&G | INLETS TB T24F&G |
|--------------------------|---------|-----|-----------------|----------------------|---------------------|---------------------|---------------------|---------------------|---------------------|---------------------|---------------------|---------------------|--------------------|--------------------|---------------------|--------------------|---------------|-----------------|---------------|-----------------|------------------|
|                          |         |     | (CU YD)         | (EACH)               | (EACH)              | (FOOT)              | (FOOT)              | (FOOT)              | (FOOT)              | (FOOT)              | (FOOT)              | (FOOT)              | (EACH)             | (EACH)             | (EACH)              | (EACH)             | (EACH)        | (EACH)          | (EACH)        | (EACH)          | (EACH)           |
| IL 146                   |         |     |                 |                      |                     |                     |                     |                     |                     |                     |                     |                     |                    |                    |                     |                    |               |                 |               |                 |                  |
| 46+65                    | 47+30   | RT  | 14              | 1                    |                     | 64                  |                     |                     |                     |                     |                     |                     |                    |                    |                     |                    |               |                 |               |                 | 1                |
| 47+30                    | 47+47   | RT  | 6               | 1                    |                     |                     |                     |                     |                     | 34                  |                     |                     |                    |                    |                     |                    |               |                 |               |                 | 1                |
| 47+56                    | 48+39   | RT  | 19              | 1                    |                     |                     |                     | 82                  |                     |                     |                     |                     |                    |                    |                     |                    |               |                 |               |                 | 1                |
| 47+57                    | 47+81   | LT  | 8               | 1                    |                     |                     |                     | 30                  |                     |                     |                     |                     |                    |                    |                     |                    |               |                 |               |                 | 1                |
| 47+81                    | 49+69   | LT  | 58              |                      |                     |                     |                     |                     |                     |                     |                     | 194                 |                    |                    | 1                   |                    |               |                 |               |                 |                  |
| 48+39                    | 49+23   | RT  | 26              | 1                    |                     |                     |                     |                     |                     |                     | 83                  |                     |                    |                    |                     |                    |               |                 |               |                 | 1                |
| 49+23                    | 49+69   | RT  | 15              | 1                    |                     |                     |                     |                     |                     |                     | 46                  |                     |                    |                    |                     |                    |               |                 |               |                 | 1                |
| 49+69                    | 50+18   | LT  | 12              | 1                    |                     |                     |                     |                     |                     | 51                  |                     |                     |                    |                    |                     |                    |               |                 |               |                 | 1                |
| 49+69                    | 50+26   | RT  | 17              | 1                    |                     |                     |                     |                     |                     |                     | 57                  |                     |                    |                    |                     |                    |               |                 |               |                 | 1                |
| 49+82                    | 50+18   | LT  | 1               | 1                    |                     |                     |                     | 36                  |                     |                     |                     |                     |                    |                    |                     |                    |               |                 |               |                 |                  |
| 50+18                    | 51+08   | LT  | 20              | 1                    |                     |                     |                     | 94                  |                     |                     |                     |                     |                    |                    |                     |                    |               |                 |               |                 | 1                |
| 50+26                    | 50+93   | RT  | 19              | 2                    |                     |                     |                     |                     | 66                  |                     |                     |                     |                    |                    |                     |                    |               |                 |               |                 | 1                |
| 50+93                    | 51+24   | RT  | 7               | 2                    |                     |                     |                     | 31                  |                     |                     |                     |                     |                    |                    |                     |                    |               |                 |               |                 | 1                |
| 51+08                    | 52+00   | LT  | 40              | 1                    |                     |                     |                     | 95                  |                     |                     |                     |                     |                    |                    |                     |                    | 1             |                 |               |                 |                  |
| 51+24                    | 52+04   | RT  | 17              | 1                    |                     |                     |                     | 79                  |                     |                     |                     |                     |                    |                    |                     |                    |               |                 |               |                 |                  |
| 52+04                    | 52+86   | RT  | 14              | 1                    |                     |                     |                     | 81                  |                     |                     |                     |                     |                    |                    |                     |                    |               |                 |               |                 |                  |
| 52+86                    | 53+56   | RT  | 8               | 1                    |                     |                     |                     | 69                  |                     |                     |                     |                     |                    |                    |                     |                    |               |                 |               |                 |                  |
| 53+56                    | 54+96   | LT  | 17              | 1                    |                     |                     |                     | 142                 |                     |                     |                     |                     |                    |                    |                     |                    | 1             |                 |               |                 |                  |
| 54+96                    | 56+50   | LT  | 17              | 1                    |                     |                     |                     | 155                 |                     |                     |                     |                     |                    |                    |                     |                    |               |                 |               |                 | 1                |
| 55+79                    | 56+59   | RT  | 11              | 1                    |                     |                     |                     |                     |                     | 80                  |                     |                     |                    |                    |                     |                    |               |                 |               |                 | 1                |
| 56+59                    | 57+39   | RT  | 24              | 1                    |                     |                     |                     |                     |                     | 80                  |                     |                     |                    |                    |                     |                    |               |                 |               |                 | 1                |
| 57+39                    | 57+81   | RT  | 28              | 1                    |                     |                     |                     |                     |                     |                     |                     | 42                  |                    |                    |                     | 1                  |               |                 |               |                 |                  |
| 57+81                    | 58+61   | RT  | 29              | 1                    |                     |                     |                     |                     |                     |                     |                     | 80                  |                    |                    |                     |                    |               |                 |               |                 | 1                |
| 58+61                    | 58+62   | RT  | 51              | 1                    |                     |                     |                     |                     | 20                  |                     |                     |                     | 1                  |                    |                     |                    | 1             |                 |               |                 |                  |
| 58+61                    | 59+41   | RT  | 11              | 1                    |                     |                     |                     |                     |                     |                     |                     | 80                  |                    |                    |                     |                    |               |                 |               |                 | 1                |
| 59+41                    | 60+21   | RT  | 31              | 1                    |                     |                     |                     |                     |                     |                     | 80                  |                     |                    |                    |                     |                    |               |                 |               |                 | 1                |
| 60+21                    | 61+02   | RT  | 29              | 1                    |                     |                     |                     |                     |                     |                     | 80                  |                     |                    |                    |                     |                    |               |                 |               |                 | 1                |
| 61+01                    | 61+11   | RT  | 27              | 1                    |                     |                     |                     |                     | 26                  |                     |                     |                     |                    | 1                  |                     |                    | 1             |                 |               |                 |                  |
| 61+02                    | 61+57   | RT  | 10              | 1                    |                     |                     |                     |                     |                     | 56                  |                     |                     |                    |                    |                     |                    |               |                 |               |                 | 1                |
| 61+57                    | 62+13   | RT  | 16              | 1                    |                     |                     |                     | 56                  |                     |                     |                     |                     |                    |                    |                     |                    |               |                 |               |                 | 1                |
| 62+13                    | 62+93   | RT  | 21              | 2                    |                     |                     |                     | 80                  |                     |                     |                     |                     |                    |                    |                     |                    |               |                 |               |                 | 1                |
| 62+93                    | 63+73   | RT  | 19              | 1                    |                     |                     |                     | 80                  |                     |                     |                     |                     |                    |                    |                     |                    |               |                 |               |                 | 1                |
| 64+53                    | 65+07   | RT  | 7               | 1                    |                     |                     |                     | 55                  |                     |                     |                     |                     |                    |                    |                     |                    |               |                 |               |                 | 1                |
| 65+07                    | 65+62   | RT  | 9               | 1                    |                     |                     |                     | 55                  |                     |                     |                     |                     |                    |                    |                     |                    |               |                 |               |                 | 1                |
| 65+62                    | 66+43   | RT  | 15              | 1                    |                     |                     |                     | 80                  |                     |                     |                     |                     |                    |                    |                     |                    |               |                 |               |                 | 1                |
| 66+43                    | 66+91   | RT  | 11              | 1                    |                     |                     |                     | 49                  |                     |                     |                     |                     |                    |                    |                     |                    |               |                 |               |                 | 1                |
| 66+91                    | 67+39   | RT  | 12              |                      |                     |                     |                     | 48                  |                     |                     |                     |                     |                    |                    |                     |                    |               |                 |               |                 |                  |
| 67+39                    | 68+19   | RT  | 24              | 1                    |                     |                     |                     |                     |                     | 80                  |                     |                     |                    |                    |                     |                    |               |                 |               |                 | 1                |
| 68+19                    | 68+74   | RT  | 20              | 1                    |                     |                     |                     |                     |                     | 56                  |                     |                     |                    |                    |                     |                    |               |                 |               |                 | 1                |
| 68+74                    | 69+16   | RT  | 16              | 1                    |                     |                     |                     |                     |                     | 42                  |                     |                     |                    |                    |                     |                    |               |                 |               |                 | 1                |
| 69+16                    | 69+16   | RT  | 14              | 1                    |                     |                     |                     |                     |                     | 27                  |                     |                     |                    |                    |                     |                    |               |                 |               |                 | 1                |
| 82+16                    | 82+25   | RT  | 8               | 1                    |                     |                     |                     |                     |                     | 9                   |                     |                     |                    |                    |                     |                    |               |                 |               |                 | 1                |
| 82+35                    | 82+86   | RT  | 43              |                      |                     |                     |                     |                     |                     | 51                  |                     |                     |                    |                    |                     |                    |               |                 |               |                 | 1                |
| 82+37                    | 82+69   | LT  | 20              | 1                    |                     |                     |                     |                     |                     | 32                  |                     |                     |                    |                    |                     |                    |               |                 |               |                 | 1                |
| RED BUD / OLD METROPOLIS |         |     |                 |                      |                     |                     |                     |                     |                     |                     |                     |                     |                    |                    |                     |                    |               |                 |               |                 |                  |
| 299+27                   | 299+81  | RT  | 10              | 1                    |                     |                     |                     |                     |                     | 57                  |                     |                     |                    |                    |                     |                    |               |                 |               |                 | 1                |
| 299+81                   | 300+31  | RT  | 20              | 1                    | 1                   |                     |                     |                     |                     | 55                  |                     |                     |                    |                    |                     |                    |               |                 |               |                 | 1                |
| 301+96                   | 302+01  | RT  | 3               | 1                    |                     |                     |                     | 15                  |                     |                     |                     |                     |                    |                    |                     |                    |               |                 |               |                 | 1                |
| PARK ST                  |         |     |                 |                      |                     |                     |                     |                     |                     |                     |                     |                     |                    |                    |                     |                    |               |                 |               |                 |                  |
| 10+43                    | 11+32   | LT  | 23              | 1                    |                     |                     |                     |                     |                     | 89                  |                     |                     |                    |                    |                     |                    | 1             |                 | 1             |                 |                  |
| SUBTOTAL                 |         |     | 897             | 48                   | 1                   | 1,364               | 66                  | 112                 | 46                  | 710                 | 435                 | 396                 | 1                  | 1                  | 1                   | 1                  | 5             | 35              | 1             | 3               | 2                |
| TOTAL                    |         |     | 1,662           | 65                   | 6                   | 1,364               | 66                  | 112                 | 46                  | 710                 | 435                 | 396                 | 1                  | 1                  | 2                   | 1                  | 7             | 35              | 3             | 3               | 2                |

**EARTHWORK SCHEDULE**

| STATION                         | STATION | EARTH EXCAVATION | AVERAGE SHRINKAGE FACTOR | EARTH EXCAVATION (ADJUSTED) | EMBANKMENT | EARTHWORK BALANCE               |                   | FURNISHED EXCAVATION | REMARKS |
|---------------------------------|---------|------------------|--------------------------|-----------------------------|------------|---------------------------------|-------------------|----------------------|---------|
|                                 |         |                  |                          |                             |            | EXCAVATION REQUIRED TO COMPLETE | EXCESS EXCAVATION |                      |         |
|                                 |         | (CU YD)          | (%)                      | (CU YD)                     | (CU YD)    | (CU YD)                         | (CU YD)           | (CU YD)              |         |
| IL 146 (WITH PARK & INDUSTRIAL) |         |                  |                          |                             |            |                                 |                   |                      |         |
| 36+50                           | 85+50   | 15570            | 25                       | 11680                       | 12160      | -480                            | 0                 | 480                  | ⚠       |
| RED BUD / OLD METROPOLIS        |         |                  |                          |                             |            |                                 |                   |                      |         |
| 293+00                          | 304+00  | 1585             | 25                       | 1190                        | 1445       | -255                            | 0                 | 255                  |         |
| RUNAROUND                       |         |                  |                          |                             |            |                                 |                   |                      |         |
| 1000+25                         | 1006+50 | 85               | 25                       | 65                          | 1475       | -1410                           | 0                 | 1410                 |         |
| TOTAL                           |         | 17,240           |                          |                             |            |                                 |                   | 2,145                | ⚠       |

| ROCK EXCAVATION SCHEDULE |         |        |                 |
|--------------------------|---------|--------|-----------------|
| STATION                  | STATION | OFFSET | ROCK EXCAVATION |
|                          |         |        | (CU YD)         |
| IL 146                   |         |        |                 |
| 64+50                    | 66+50   | LT     | 335             |
| TOTAL                    |         |        | 335             |

⚠ REVISED SHEET 6/5/2023

MODEL: D:\s\11... FILE NAME: H:\p220088 - IDOT PTB 196 Item 61220088.017 - IL 146 Phase 11\CADD\Microstation\CADD Drawings\09220088.017-sh-schedules.dgn



USER NAME = breanna.frahm  
DESIGNED -  
DRAWN -  
PLOT SCALE = 2,000' / in.  
CHECKED -  
PLOT DATE = 5/31/2023  
DATE -

DESIGNED -  
REVISOR - 5/31/2023  
REVISOR -  
REVISOR -  
REVISOR -

STATE OF ILLINOIS  
DEPARTMENT OF TRANSPORTATION

SCHEDULES  
SCALE: SHEET 5 OF 6 SHEETS STA. TO STA.

F.A.P. RTE. SECTION COUNTY TOTAL SHEETS SHEET NO.  
885 110(W-2,RS-2) JOHNSON 159 30  
CONTRACT NO. 78524  
ILLINOIS FED. AID PROJECT

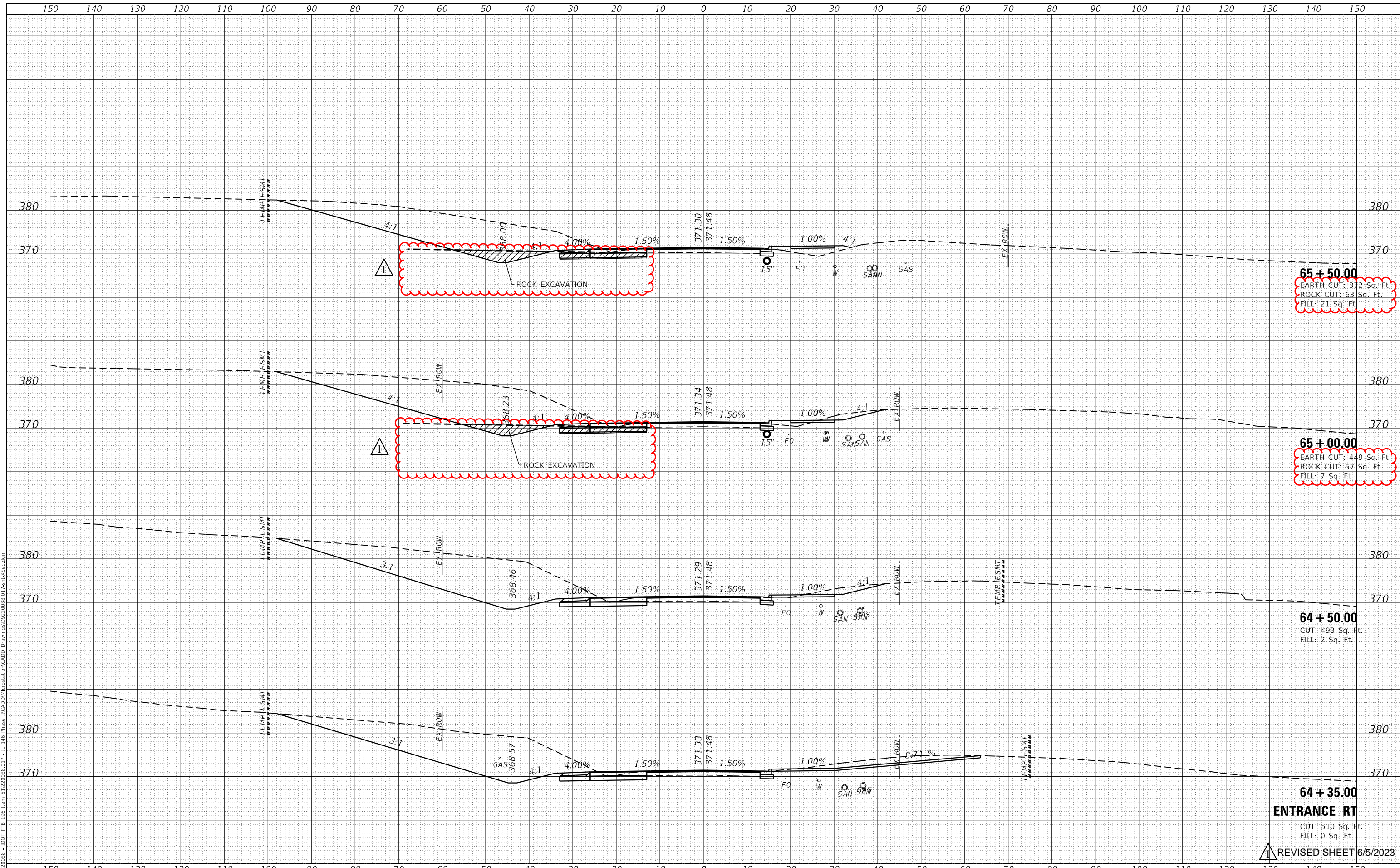




|              |               |
|--------------|---------------|
| DATE         |               |
| BY           |               |
| FINAL SURVEY | SURVEYED      |
| NOTE BOOK    | PLOTTED       |
| NO.          | TEMPLATE      |
|              | AREAS CHECKED |

|                 |               |
|-----------------|---------------|
| DATE            |               |
| BY              |               |
| ORIGINAL SURVEY | SURVEYED      |
| NOTE BOOK       | PLOTTED       |
| NO.             | TEMPLATE      |
|                 | AREAS CHECKED |

MODEL: Definit  
 FILE NAME: H:\222088 - IDOT PTB 196 Item 61222088.D17 - IL 146 Phase II\CADD\MI\craabm\CADD Drawings\09220088\017.shc\5sec.dgn



**65 + 50.00**  
 EARTH CUT: 372 Sq. Ft.  
 ROCK CUT: 63 Sq. Ft.  
 FILL: 21 Sq. Ft.

**65 + 00.00**  
 EARTH CUT: 449 Sq. Ft.  
 ROCK CUT: 57 Sq. Ft.  
 FILL: 7 Sq. Ft.

**64 + 50.00**  
 CUT: 493 Sq. Ft.  
 FILL: 2 Sq. Ft.

**64 + 35.00**  
**ENTRANCE RT**  
 CUT: 510 Sq. Ft.  
 FILL: 0 Sq. Ft.

REVISIED SHEET 6/5/2023



|                             |            |                     |
|-----------------------------|------------|---------------------|
| USER NAME = roshan.pokhrel  | DESIGNED - | REVISED - 5/31/2023 |
|                             | DRAWN -    | REVISED -           |
| PLOT SCALE = 20.0000' / in. | CHECKED -  | REVISED -           |
| PLOT DATE = 6/1/2023        | DATE -     | REVISED -           |

STATE OF ILLINOIS  
 DEPARTMENT OF TRANSPORTATION

CROSS SECTIONS  
 IL ROUTE 146

SCALE: SHEET 13 OF 22 SHEETS STA. 64+28.00 TO STA. 65+50.00

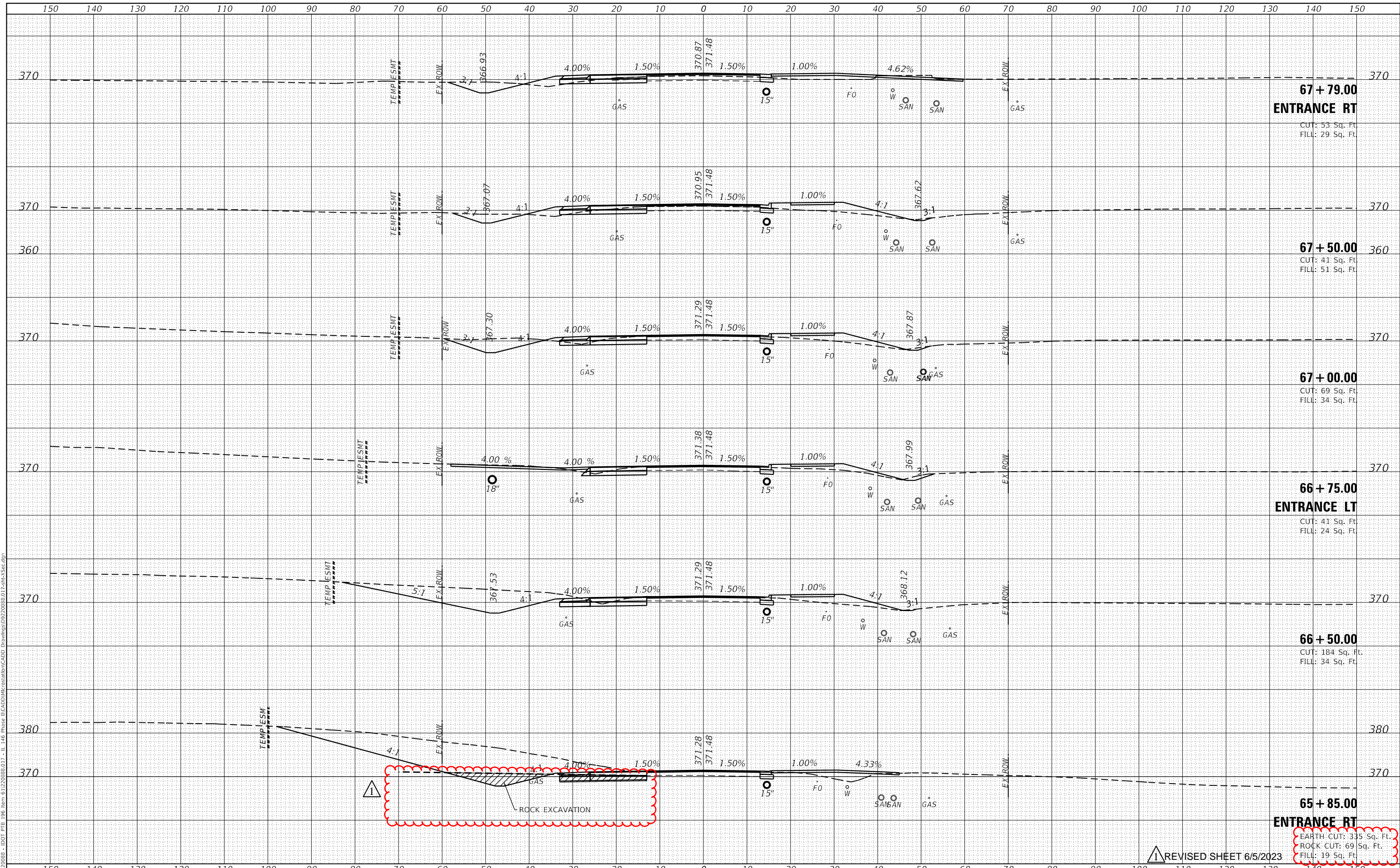
| F.A.P. RTE. | SECTION       | COUNTY  | TOTAL SHEETS       | SHEET NO. |
|-------------|---------------|---------|--------------------|-----------|
| 885         | 110(W-2,RS-5) | JOHNSON | 159                | 134       |
|             |               |         | CONTRACT NO. 78524 |           |

ILLINOIS FED. AID PROJECT

|              |               |
|--------------|---------------|
| DATE         |               |
| BY           |               |
| FINAL SURVEY | SURVEYED      |
| NOTE BOOK    | PLOTTED       |
| NO.          | TEMPLATE      |
|              | AREAS CHECKED |

|                 |               |
|-----------------|---------------|
| DATE            |               |
| BY              |               |
| ORIGINAL SURVEY | SURVEYED      |
| NOTE BOOK       | PLOTTED       |
| NO.             | TEMPLATE      |
|                 | AREAS CHECKED |

MODEL: Definit  
 FILE NAME: H:\220808 - IDOT PTB 196 Item 61220808.D17 - IL 146 Phase II\CADD\MI\Drawings\922008\017sht-5sec.dgn



**67 + 79.00**  
**ENTRANCE RT**  
 CUT: 53 Sq. Ft.  
 FILL: 29 Sq. Ft.

**67 + 50.00**  
 CUT: 41 Sq. Ft.  
 FILL: 51 Sq. Ft.

**67 + 00.00**  
 CUT: 69 Sq. Ft.  
 FILL: 34 Sq. Ft.

**66 + 75.00**  
**ENTRANCE LT**  
 CUT: 41 Sq. Ft.  
 FILL: 24 Sq. Ft.

**66 + 50.00**  
 CUT: 184 Sq. Ft.  
 FILL: 34 Sq. Ft.

**65 + 85.00**  
**ENTRANCE RT**  
 EARTH CUT: 335 Sq. Ft.  
 ROCK CUT: 69 Sq. Ft.  
 FILL: 19 Sq. Ft.

REVISOR SHEET 6/5/2023



|                             |            |                     |
|-----------------------------|------------|---------------------|
| USER NAME = roshan.pokhrel  | DESIGNED - | REVISED - 5/31/2023 |
| PLOT SCALE = 20.0000' / in. | DRAWN -    | REVISED -           |
| PLOT DATE = 6/1/2023        | CHECKED -  | REVISED -           |
|                             | DATE -     | REVISED -           |

**STATE OF ILLINOIS**  
**DEPARTMENT OF TRANSPORTATION**

**CROSS SECTIONS**  
**IL ROUTE 146**

SCALE: SHEET 14 OF 22 SHEETS STA. 65+85.00 TO STA. 67+79.00

| F.A.P. RTE.        | SECTION       | COUNTY  | TOTAL SHEETS              | SHEET NO. |
|--------------------|---------------|---------|---------------------------|-----------|
| 885                | 110(W-2,R5-5) | JOHNSON | 159                       | 135       |
| CONTRACT NO. 78524 |               |         | ILLINOIS FED. AID PROJECT |           |