

STATE OF ILLINOIS  
DEPARTMENT OF TRANSPORTATION

F.A. RTE.	SECTION	COUNTY	TOTAL SHEETS	SHEET NO.
	D 1 APP PAINT PVT MKG 23-28	WILL & LAKE	4	1
		ILLINOIS	CONTRACT NO. 46621	

- INDEX OF SHEETS:**  
 1. COVER SHEET  
 2. SUMMARY OF QUANTITIES  
 3. WILL COUNTY MAP  
 4. LAKE COUNTY MAP

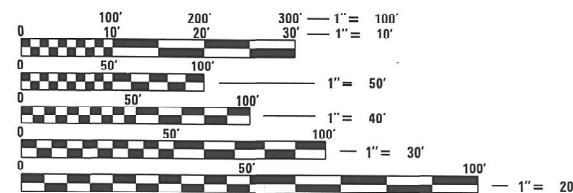
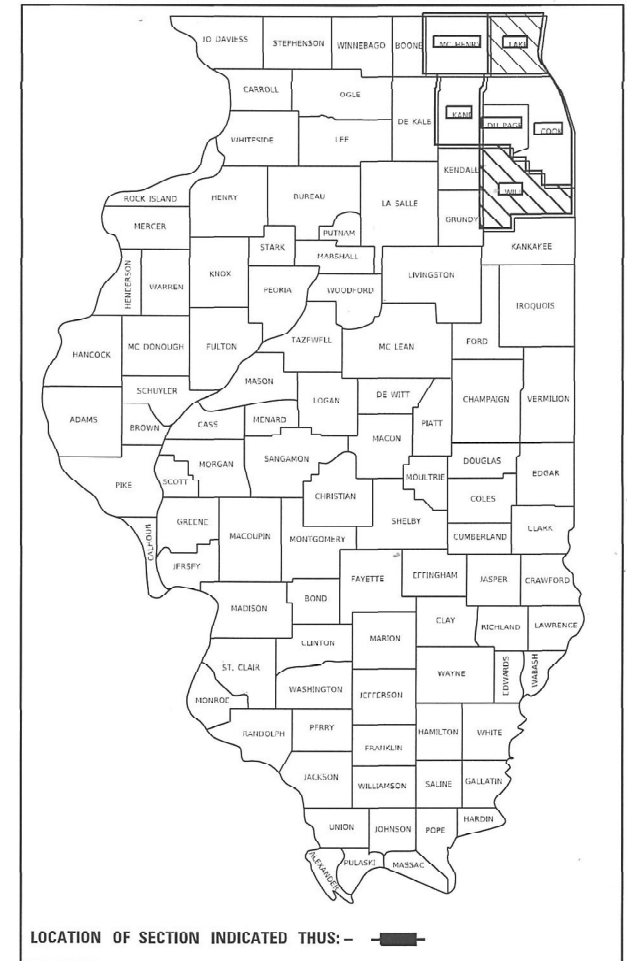
**STATE STANDARDS**

- 701301-04 LANE CLOSURE 2L,2W, SHORT TIME OPERATIONS  
 701311-03 LANE CLOSURE 2L,2W MOVING OPERATIONS-DAY ONLY  
 701426-09 LANE CLOSURE, MULTILANE,INTERMITTENT OR MOVING OPERATION FOR SPEEDS ≥ 45MPH  
 701427-05 LANE CLOSURE, MULTILANE,INTERMITTENT OR MOVING OPERATION FOR SPEEDS ≤ 40MPH  
 701901-08 TRAFFIC CONTROL DEVICES  
 780001-05 TYPICAL PAVEMENT MARKINGS

**PROPOSED  
HIGHWAY PLANS**

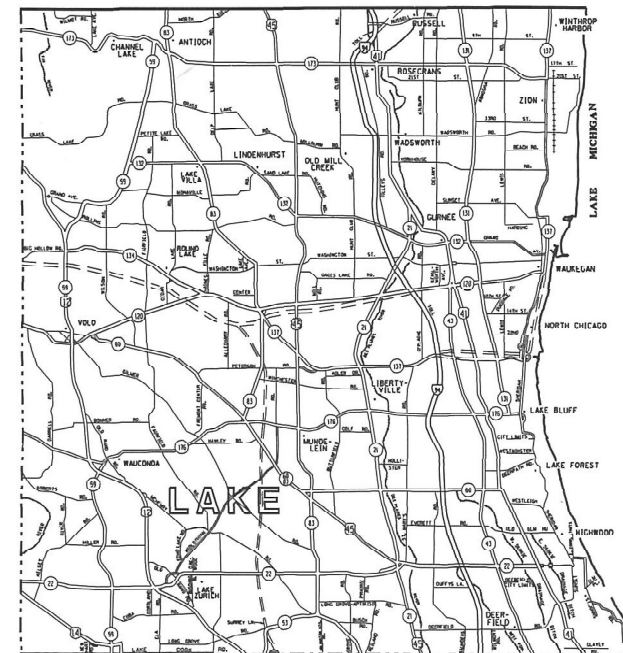
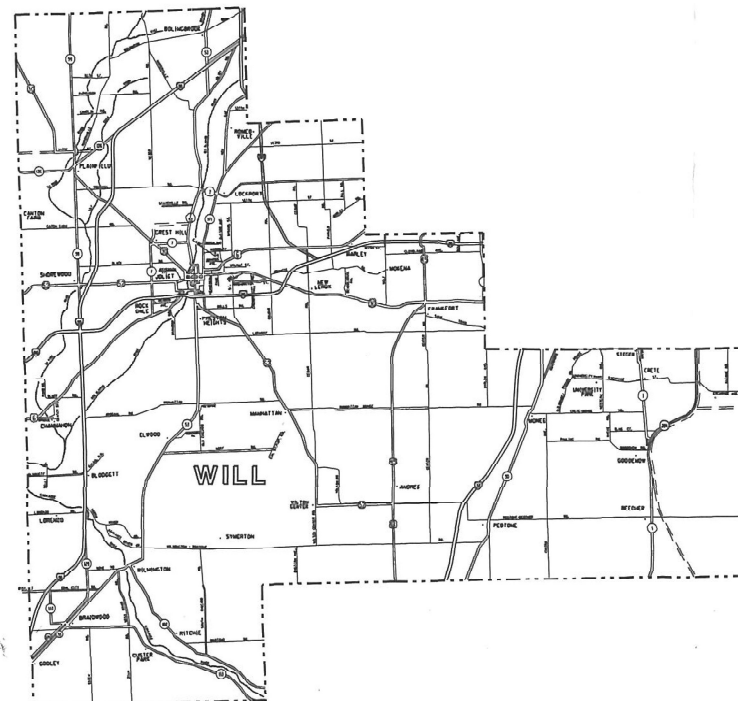
**VARIOUS ROUTES  
D 1 APP PAINT PVT MKG 23-28  
PROJECT  
PAINT PAVEMENT MARKING  
WILL & LAKE COUNTY**

M-60-029-23



FULL SIZE PLANS HAVE BEEN PREPARED USING STANDARD ENGINEERING SCALES. REDUCED SIZED PLANS WILL NOT CONFORM TO STANDARD SCALES. IN MAKING MEASUREMENTS ON REDUCED PLANS, THE ABOVE SCALES MAY BE USED.

J.U.L.I.E.  
JOINT UTILITY LOCATION INFORMATION FOR EXCAVATION  
1-800-892-0123  
OR 811



STATE OF ILLINOIS  
DEPARTMENT OF TRANSPORTATION

SUBMITTED March 10, 2023  
Joseph R. ... REGIONAL ENGINEER  
 May 12, 2023  
Joseph A. ...  
 ENGINEER OF DESIGN AND ENVIRONMENT  
 May 12, 2023  
Stephen M. ...  
 DIRECTOR OF HIGHWAYS PROJECT IMPLEMENTATION

**PRINTED BY THE AUTHORITY  
OF THE STATE OF ILLINOIS**

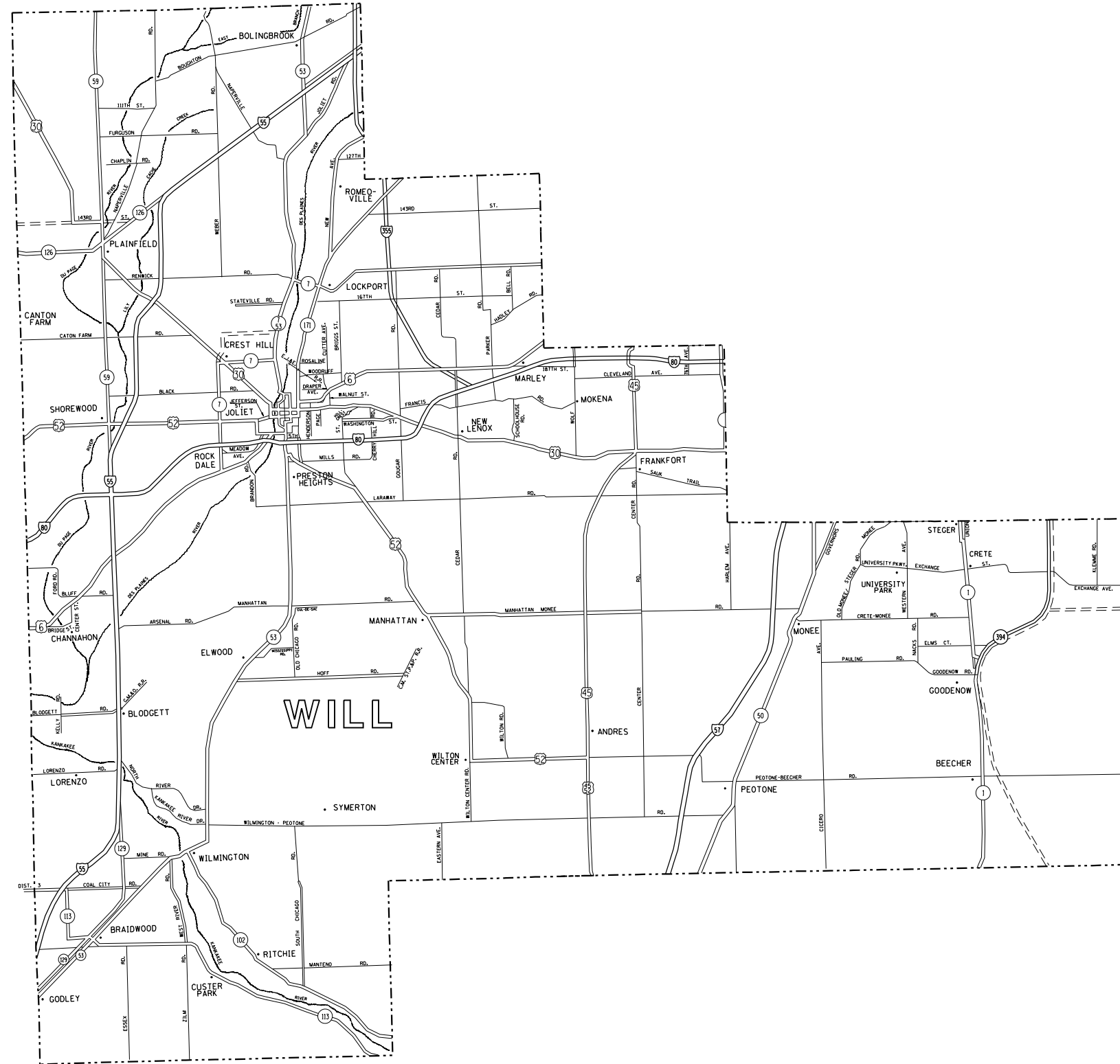
SUMMARY OF QUANTITIES

CODE NO.	ITEM	UNIT	100% STATE URBAN 0021 TOTAL QUANTITY	WILL	LAKE
78001110	PAINT PAVEMENT MARKING - LINE 4"	FOOT	15,000,000	7,500,000	7,500,000
78001130	PAINT PAVEMENT MARKING - LINE 6"	FOOT	100,000	20,000	80,000
78001140	PAINT PAVEMENT MARKING - LINE 8"	FOOT	25,000	6,000	19,000

Model: Default  
File Name: S:\S\Contracts\CAD\Coversheets for Contracts.dgn

USER NAME = David.Gonzalez2	DESIGNED -	REVISED -	<b>STATE OF ILLINOIS DEPARTMENT OF TRANSPORTATION</b>	<b>SUMMARY OF QUANTITIES</b>		F.A. RTE.	SECTION	COUNTY	TOTAL SHEETS	SHEET NO.
PLOT SCALE = 101.3424 ' / 1 in.	DRAWN -	REVISED -				D 1 APP PAINT PVT 23-28	WILL & LAKE	4	2	
PLOT DATE = 5/1/2023	CHECKED -	REVISED -				CONTRACT NO. 46621				
	DATE -	REVISED -	SCALE:	SHEET 2 OF 4 SHEETS	STA. TO STA.	ILLINOIS FED. AID PROJECT				

MODEL: Default  
 FILE NAME: S:\GIS\Contracts\CAD\CoverSheets for Contracts.dgn



USER NAME = David_Gonzalez2	DESIGNED -	REVISED -
PLOT SCALE = 101.4414' / in.	DRAWN -	REVISED -
PLOT DATE = 3/8/2023	CHECKED -	REVISED -
	DATE -	REVISED -

**STATE OF ILLINOIS  
 DEPARTMENT OF TRANSPORTATION**

**WILL COUNTY MAP**

SCALE: SHEET 3 OF 4 SHEETS STA. TO STA.

F.A. RTE.	SECTION	COUNTY	TOTAL SHEETS	SHEET NO.
	D 1 APP PAINT PVT 23-28	WILL & LAKE	4	3
			CONTRACT NO. 46621	
ILLINOIS FED. AID PROJECT				

