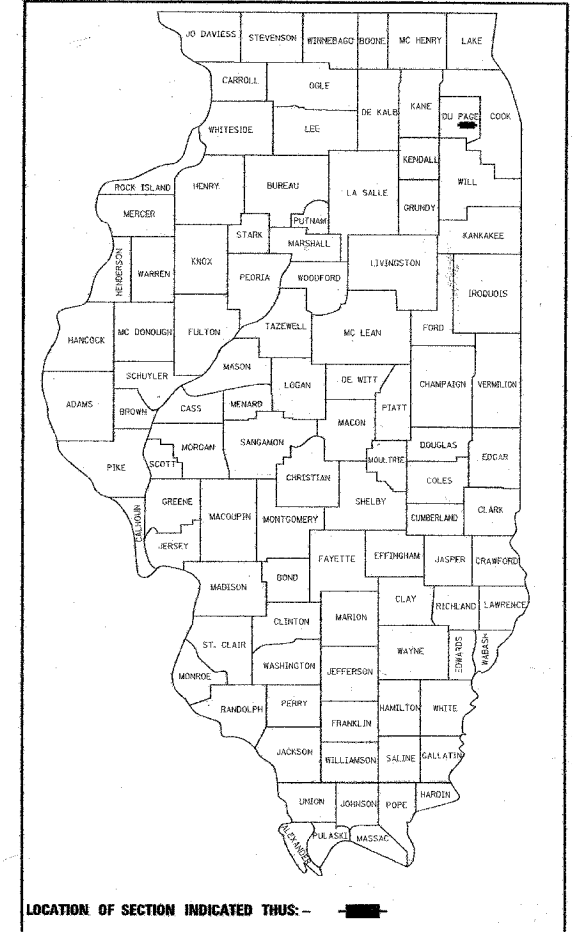


STATE OF ILLINOIS
DEPARTMENT OF TRANSPORTATION
DIVISION OF HIGHWAYS

PLANS FOR PROPOSED FEDERAL AID HIGHWAY

F.A.U. RTE.	SECTION	COUNTY	TOTAL SHEETS	SHEET NO.
3545	54 WRS-7	DUPAGE	235	1
FED. ROAD DIST. NO.	ILLINOIS	FED. AID PROJECT		
CONTRACT NO. 62291				

D-91-061-00



FOR INDEX OF SHEETS, SEE SHEET NO. 2

TRAFFIC DATA
ADT:

IL RTE. 56, 22ND ST. TO MIDWEST RD. = 18,200 (2000) 22,000 (2020)
 IL RTE. 56, MIDWEST RD. TO MacARTHUR DR. = 21,900 (2000) 32,000 (2020)
 IL RTE. 56, MacARTHUR DR. TO IL RTE. 83 = 22,000 (2000) 32,400 (2020)
 MIDWEST RD. = 20,400 (2000) 25,000 (2020)
 SUMMIT AVE. = 18,500 (2000) 19,000 (2020)
 MacARTHUR DR. = 2,200 (2000) 2,700 (2020)
 MYRTLE AVE. = 1,300 (2000) 1350 (2020)

DESIGN SPEED:

IL RTE. 56 = 50 MPH
 SUMMIT AVE/MIDWEST RD. = 45 MPH
 MacARTHUR DR./MYRTLE AVE. = 35 MPH

POSTED SPEED LIMIT:

IL RTE. 56 = 40 MPH
 SUMMIT AVE/MIDWEST RD. = 35 MPH
 MacARTHUR DR./MYRTLE AVE. = 25 MPH

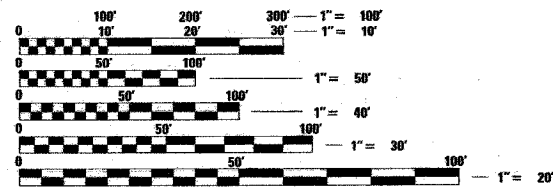
DESIGN DESIGNATION:

IL RTE. 56 2925(14) MINOR ARTERIAL 4.06 (FD-10)

F.A.U. ROUTE 3545 (IL RTE. 56) WEST OF SUMMIT AVENUE TO IL 83 SECTION: 54 WRS-7 ROADWAY RECONSTRUCTION, TRAFFIC SIGNAL MODERNIZATION

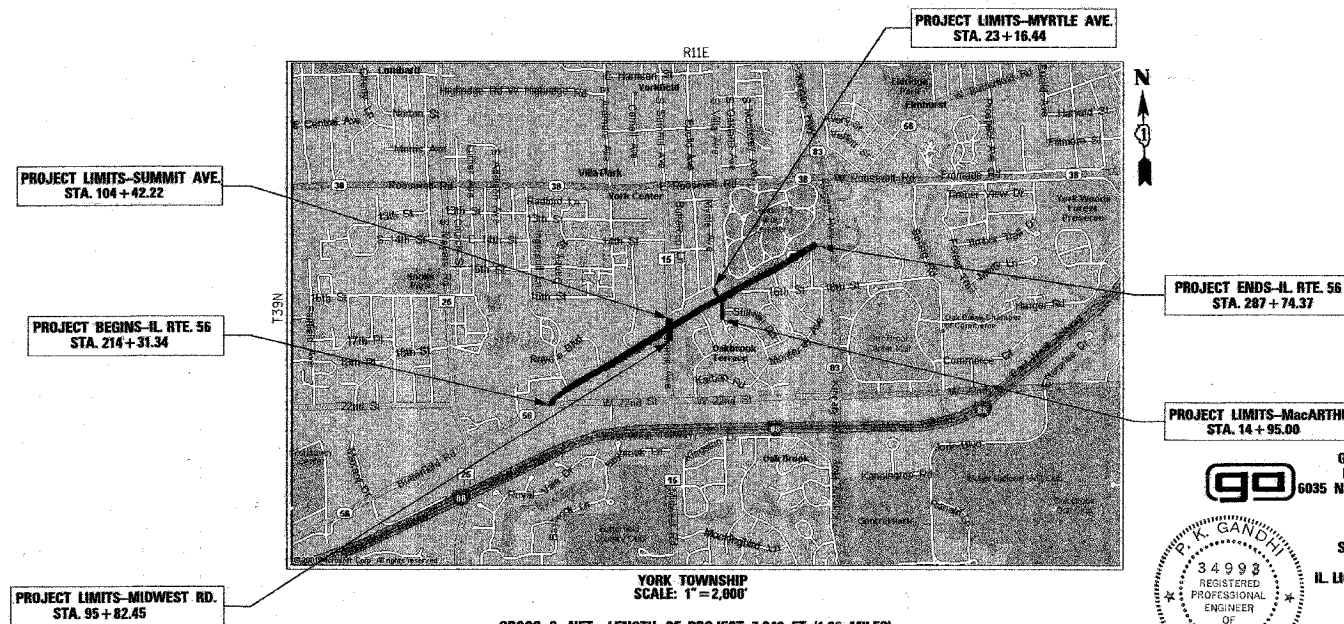
DuPAGE COUNTY C-91-386-01

PROJECT LOCATED IN THE
CITY OF OAKBROOK TERRACE
AND VILLAGE OF OAK BROOK



FULL SIZE PLANS HAVE BEEN PREPARED USING STANDARD ENGINEERING SCALES, REDUCED SIZED PLANS WILL NOT CONFORM TO STANDARD SCALES, IN MAKING MEASUREMENTS ON REDUCED PLANS, THE ABOVE SCALES MAY BE USED.

FOR UTILITY INFORMATION, CONTACT J.U.L.I.E.
(JOINT UTILITY LOCATION INFORMATION FOR EXCAVATION)
AT 1-800-892-0123



YORK TOWNSHIP
SCALE: 1" = 2,000'
GROSS & NET LENGTH OF PROJECT: 7,343 FT. (1.39 MILES)

CONTRACT NO. 62291

COUNTY: DuPAGE SECTION: 54-WRS-7 F.A.U. ROUTE: 3545 (IL RTE. 56)

STATE OF ILLINOIS
DEPARTMENT OF TRANSPORTATION
DIVISION OF HIGHWAYS

SUBMITTED March 29, 20 05
Dina O'Keefe
 DEPUTY DIRECTOR OF HIGHWAYS, REGION ENGINEER

May 13, 20 05
Mike Stene
 ENGINEER OF DESIGN AND ENVIRONMENT

May 13, 20 05
Victor Moders
 DIRECTOR, DIVISION OF HIGHWAYS

PRINTED BY AUTHORITY OF THE STATE OF ILLINOIS

GO
 GANDI AND ASSOCIATES, INC.
 ENGINEERS AND PLANNERS
 6035 N. NORTHWEST HIGHWAY, SUITE 306
 CHICAGO, IL 60631
 (773) 774-5910

SIGNATURE: P.K. Gandhi
 DATE: Jun 13, 2005
 IL LICENSE NO. 34998
 EXP. DATE: 11/30/2005
 FIELD: GANDI AND ASSOCIATES, INC.
 TRAFFIC ENGINEERING
 (SHEETS 109 TO 128)

JJB
 JAMES J. BENES & ASSOCIATES
 CONSULTING ENGINEERS
 950 WARRENVILLE ROAD, SUITE 101
 Lisle, IL 60532
 (630) 719-7520

SIGNATURE: Thomas Adomick
 DATE: 1/13/05
 IL LICENSE NO. 062-045065
 EXP. DATE: NOVEMBER 30, 2005
 FIELD: JAMES J. BENES AND ASSOCIATES, INC.
 CIVIL ENGINEERING
 (SHEETS 1 TO 75, 99 TO 108 AND 129 TO 235)

IDOT PROJECT MANAGER: KEN ENG (847) 705-4247