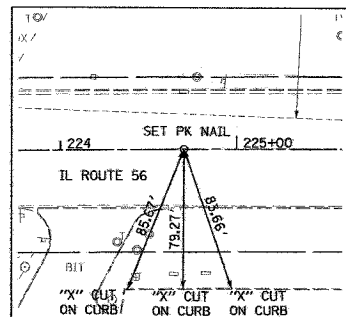
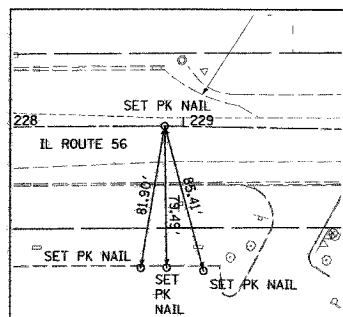


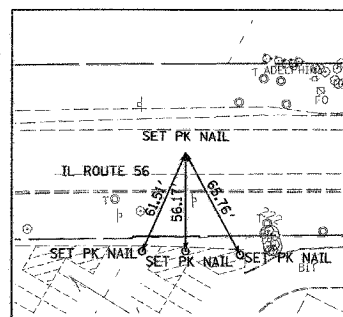
P.O.T., STA. 219+40.00



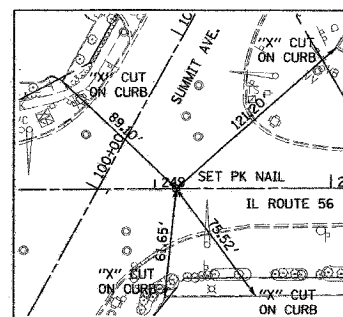
P.O.T., STA. 224+70.15



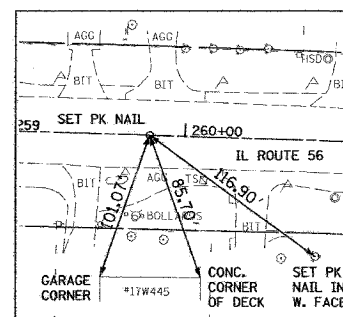
P.O.T., STA. 228+89.52



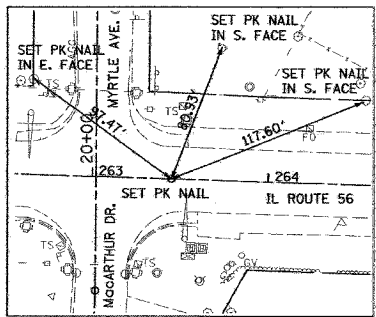
P.O.T., STA. 233+58.09



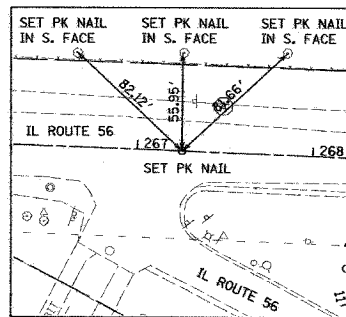
P.C., STA. 249+12.23



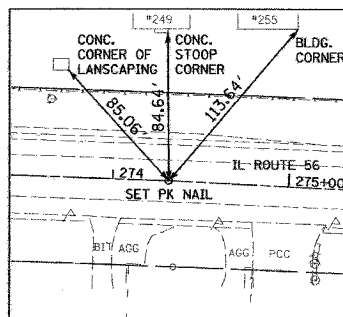
P.T., STA. 259+79.90



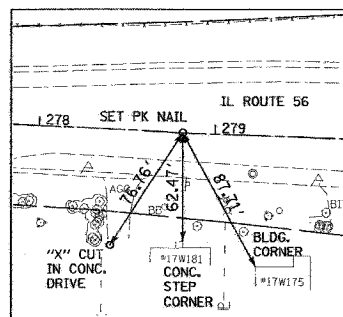
P.C., STA. 263+44.98



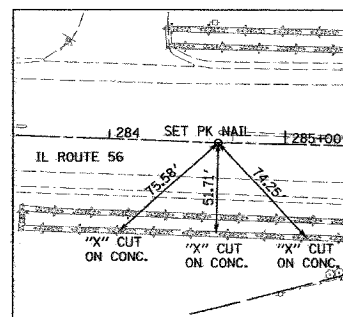
P.T., STA. 267+25.35



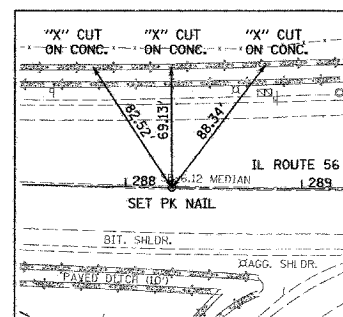
P.O.T., STA. 274+31.82



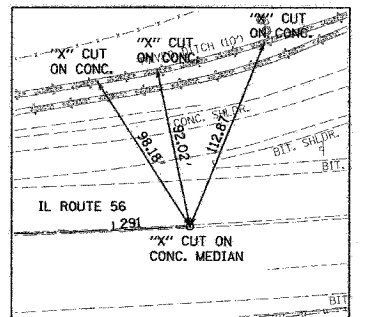
P.O.T., STA. 278+81.65



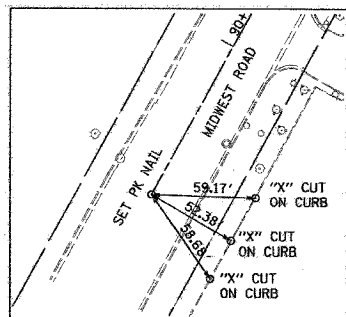
P.O.T., STA. 284+61.95



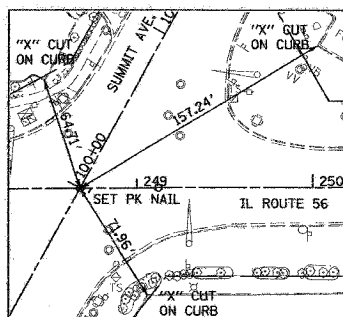
P.C., STA. 288+26.38



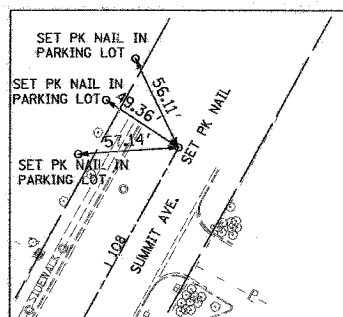
P.T., STA. 291+43.54



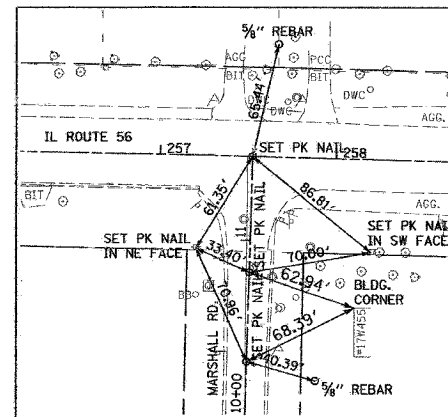
P.O.T., STA. 89+03.87



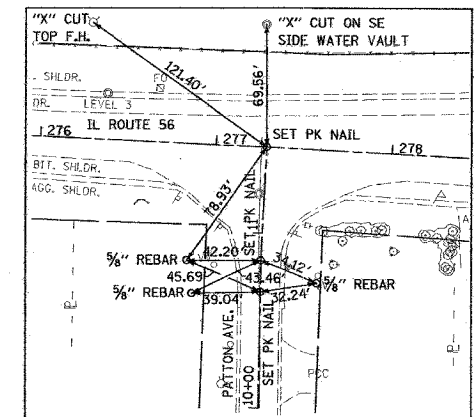
P.O.T., STA. 100+00.00



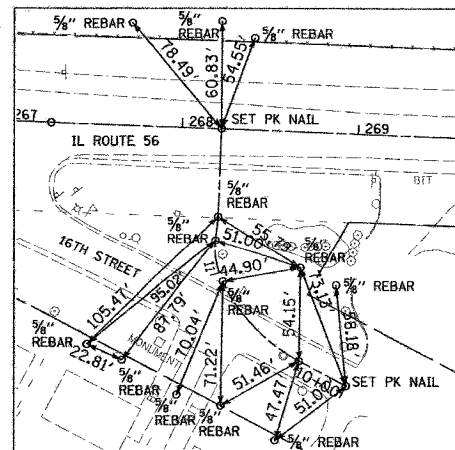
P.O.T., STA. 108+77.80



MARSHALL AVE.
P.O.T., STA. 10+30.54
P.O.T., STA. 10+81.38
P.O.T., STA. 11+47.81



PATTON AVENUE
P.O.T., STA. 10+66.30
P.O.T., STA. 10+84.25
P.O.T., STA. 11+49.11



16TH STREET
P.O.T., STA. 10+00.00
P.C., STA. 10+30.22
P.C.C., STA. 10+94.28
P.O.T., STA. 11+19.76
P.O.T., STA. 11+35.76
P.O.T., STA. 11+83.76



REVISIONS	
NAME	DATE

ILLINOIS DEPARTMENT OF TRANSPORTATION
F.A.U. ROUTE 3545
IL RTE 56 (BUTTERFIELD ROAD)

ALIGNMENT, TIES AND BENCH MARKS

DATE: 2/20/04
DRAWN BY: SMP
CHECKED BY: BDH