

F.A.U. RTE.	SECTION	COUNTY	TOTAL SHEETS	SHEET NO.
3545	54-WRS-7	DUPAGE	235	33
STA. 271+00		TO STA. 291+00		
FED. ROAD DIST. NO.	ILLINOIS	FED. AID PROJECT		
CONTRACT NO. 62291				

- TEMPORARY PAVEMENT MARKINGS**
- 4" WHITE EDGE LINE - EACH EDGE (YELLOW FOR INSIDE EDGE)
 - 4" WHITE SKIP DASH - (30 FT. SKIP-10 FT. DASH) - BETWEEN LANES
 - 4" DOUBLE YELLOW - MEDIANS AND BETWEEN OPPOSING LANES
 - 6" WHITE LANE LINE - STORAGE AREA OF LEFT-TURN BAY
 - 6" WHITE SKIP DASH - (6 FT. SKIP-2 FT. DASH) - LEFT-TURN BAY
 - 12" YELLOW DIAGONALS - (20 FT. C-C) - MEDIANS AND GORES
 - 24" WHITE STOP BAR - ALL LOCATIONS
 - WHITE LETTERS AND SYMBOLS - TURN LANES

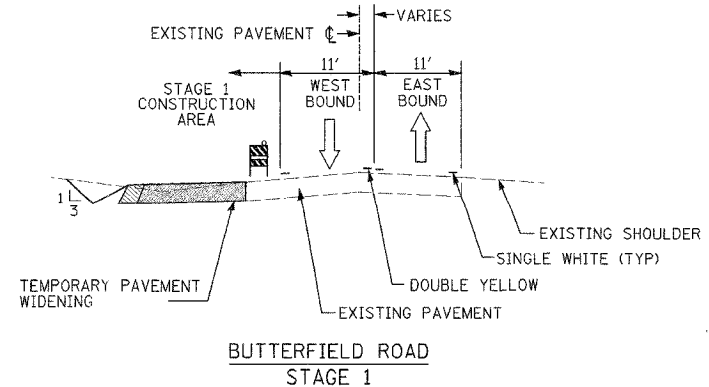
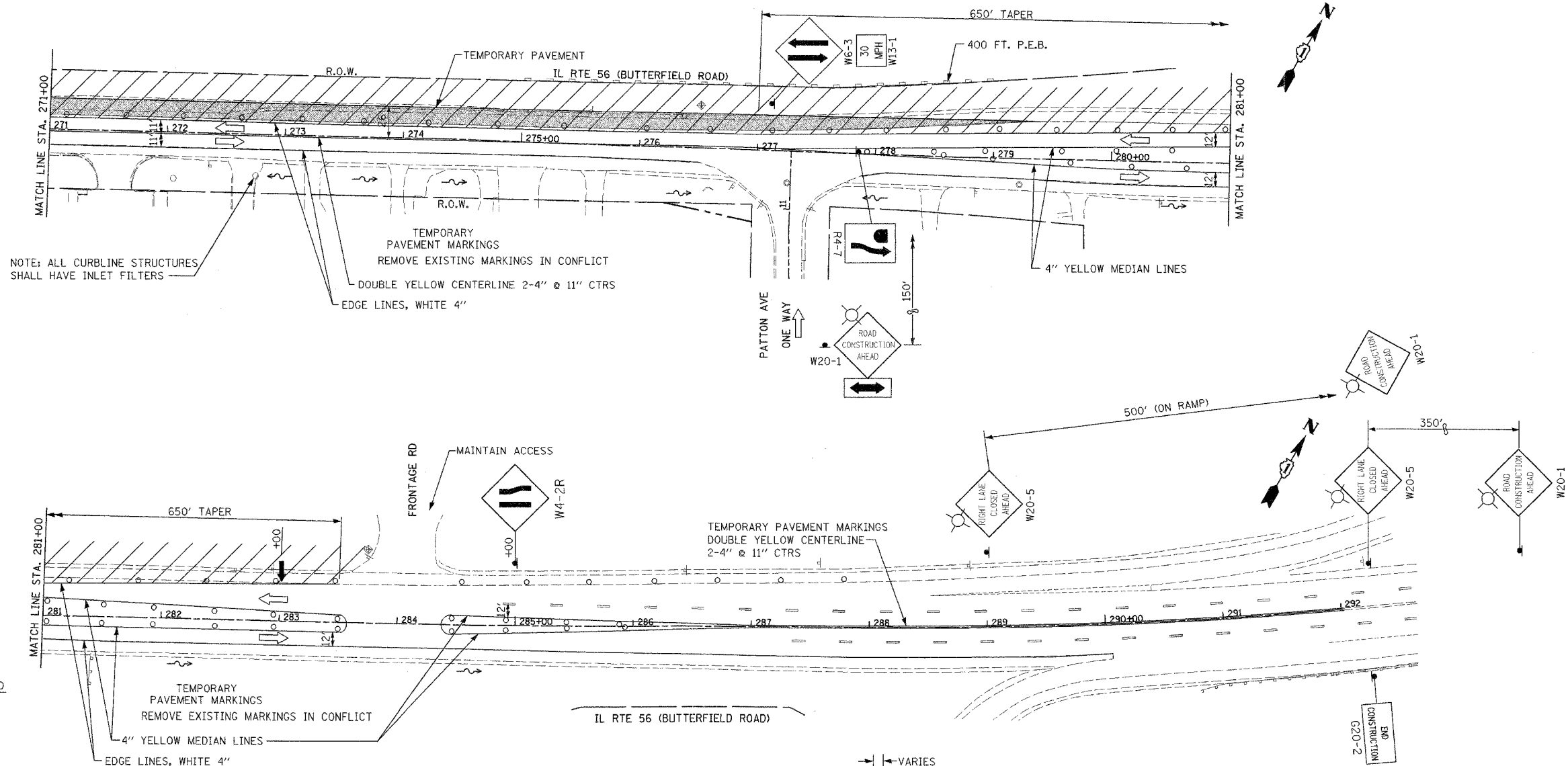
NOTE: EXISTING BARRIER MEDIAN FROM STA. 279+90 TO STA. 292+00 SHALL BE MILLED AT THE END OF STAGE 1 TO ALLOW FOR TRAFFIC CROSS OVER. STANDARD 701601 SHALL BE USED FOR THIS WORK. A TEMPORARY DOUBLE YELLOW CENTERLINE SHALL BE PLACED.

MAINTENANCE OF TRAFFIC LEGEND

- CONSTRUCTION AREA
- DIRECTION OF TRAFFIC
- TYPE II BARRICADES OR DRUMS WITH STEADY BURN LIGHTS AT 50' C-C UNLESS OTHERWISE NOTED DEVICES IN TAPER (25' C-C) DEVICES IN RADII (10' C-C)
- CONSTRUCTION SIGN
- TYPE III BARRICADES WITH FLASHING LIGHTS (2 EACH)
- ARROW BOARD
- TEMPORARY PAVEMENT
- TEMPORARY DRAINAGE
- FLASHING RED LIGHT

STORMWATER POLLUTION PREVENTION LEGEND

- PERIMETER EROSION BARRIER (P.E.B.)
- CONSTRUCTION FENCE
- TEMPORARY EROSION CONTROL SEEDING
- INLET AND PIPE PROTECTION
- INLET FILTERS (EXISTING DRAINAGE STRUCTURES)
- INLET FILTERS (PROPOSED DRAINAGE STRUCTURES)
- TEMPORARY DITCH CHECK, ROLLED EXCELSIOR
- SEDIMENT BASIN
- EROSION CONTROL BLANKET
- DRAINAGE STRUCTURES



REVISIONS	
NAME	DATE

ILLINOIS DEPARTMENT OF TRANSPORTATION
 F.A.U. ROUTE 3545
 IL RTE 56 (BUTTERFIELD ROAD)
 STORMWATER POLLUTION PREVENTION
 AND
 MAINTENANCE OF TRAFFIC
 STAGE 1

DATE: 2/20/04
 DRAWN BY: SMP
 CHECKED BY: BDH