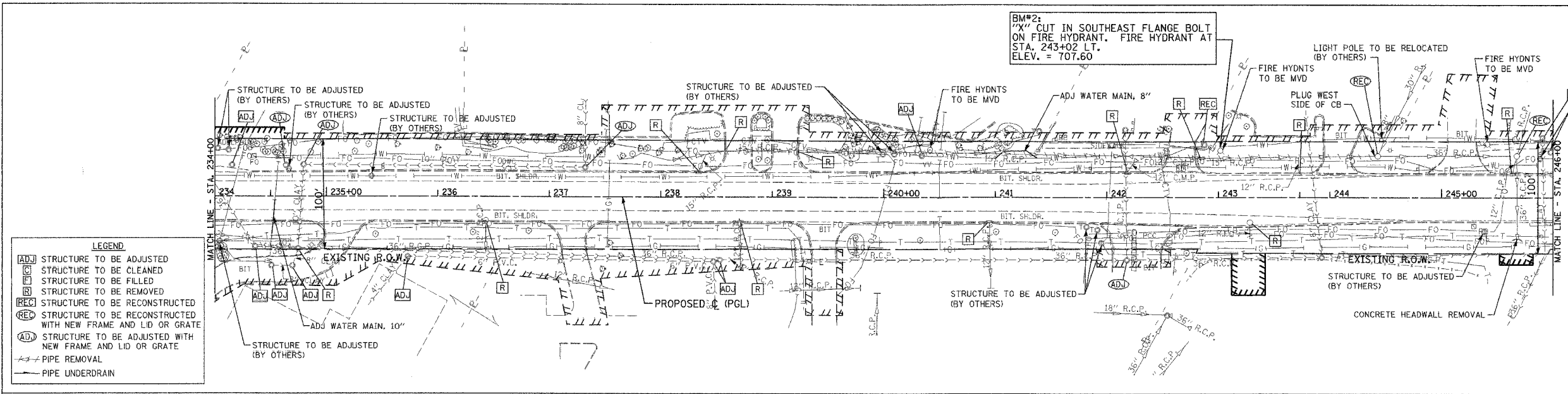
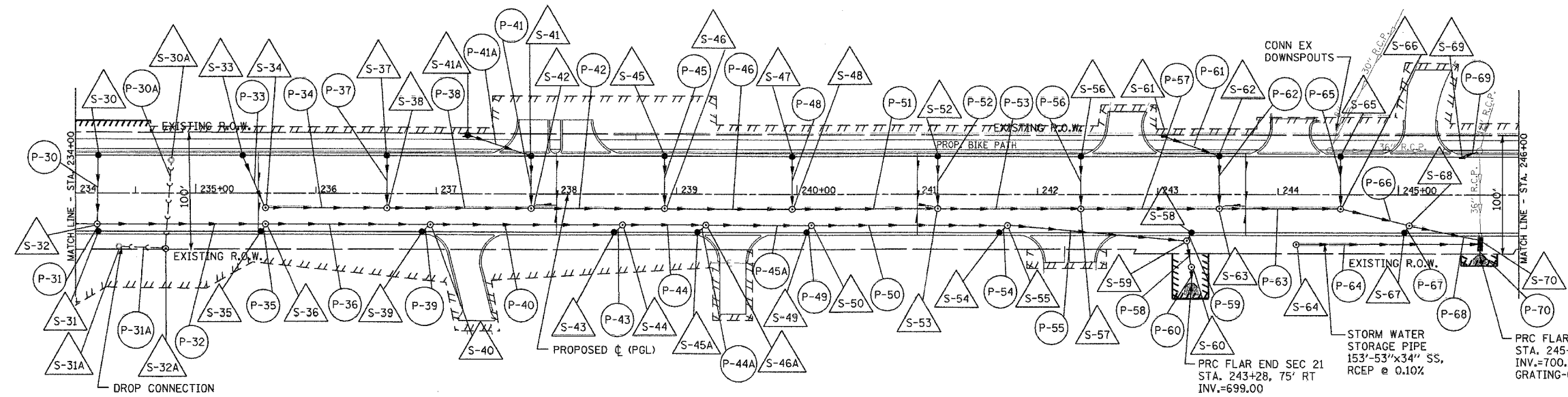


F.A.U. RTE.	SECTION	COUNTY	TOTAL SHEETS	SHEET NO.
3545	54-WRS-7	DuPAGE	235	57
STA. 234+00		TO STA. 246+00		
FED. ROAD DIST. NO.		ILLINOIS FED. AID PROJECT		
CONTRACT NO. 62291				

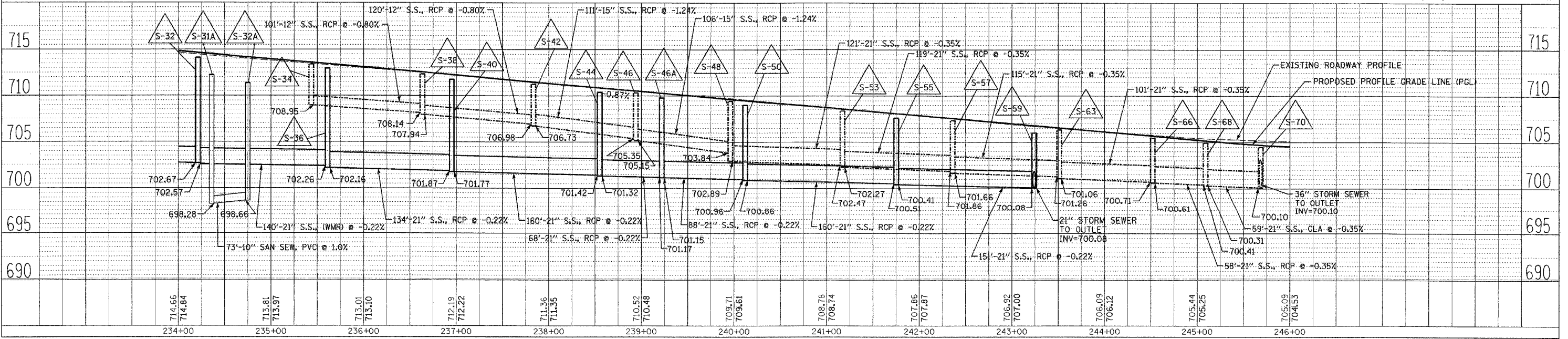
BM#2: 4" CUT IN SOUTHEAST FLANGE BOLT ON FIRE HYDRANT. FIRE HYDRANT AT STA. 243+02 LT. ELEV. = 707.60



EXISTING ILLINOIS ROUTE 56



PROPOSED ILLINOIS ROUTE 56
 HORIZ. (1"=50') 0 50' 100'
 VERT. (1"=5') 0 5' 10'



DRAINAGE AND UTILITIES IL. RTE. 56 STA. 234+00 TO STA. 246+00

DATE: _____ BY: _____
 SURVEYED: _____
 PLAN: _____
 NOTE BOOK: _____
 NO. _____

DATE: _____ BY: _____
 PROFILE: _____
 NOTE BOOK: _____
 NO. _____