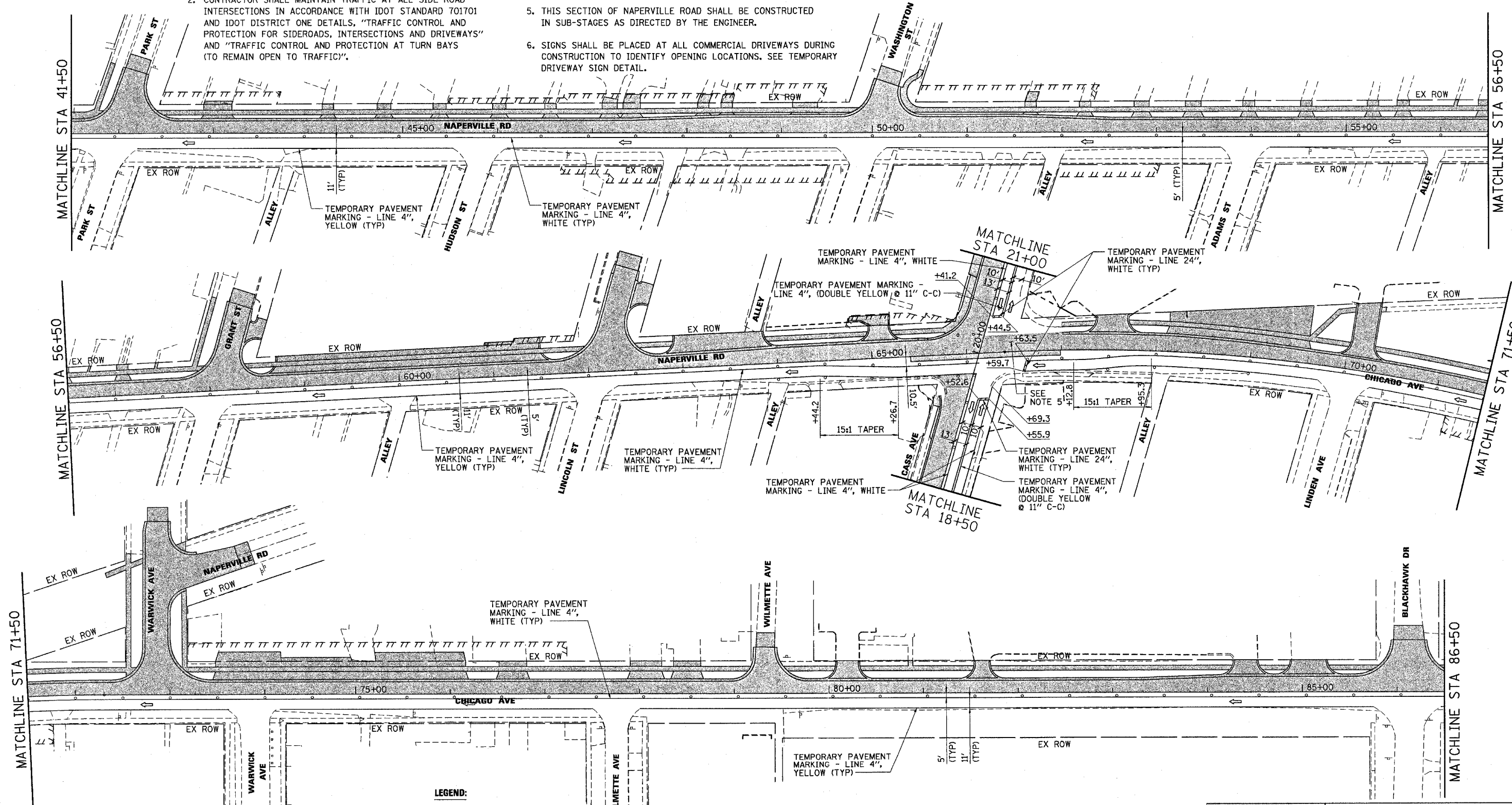


F.A.U. RTE.	SECTION	COUNTY	TOTAL SHEETS	SHEET NO.
1487	66R	DUPAGE	412	46
STA. 23+00.00		TO STA. 144+00.00		
FED. ROAD DIST. NO.	ILLINOIS FED. AID PROJECT			
CONTRACT NO. 62376				

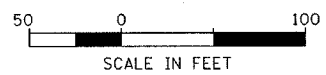
NOTES:

- CONTRACTOR SHALL MAINTAIN TRAFFIC ALONG NAPERVILLE RD/CHICAGO AVE IN ACCORDANCE WITH IDOT STANDARD 701501.
- CONTRACTOR SHALL MAINTAIN TRAFFIC AT ALL SIDE ROAD INTERSECTIONS IN ACCORDANCE WITH IDOT STANDARD 701701 AND IDOT DISTRICT ONE DETAILS, "TRAFFIC CONTROL AND PROTECTION FOR SIDEROADS, INTERSECTIONS AND DRIVEWAYS" AND "TRAFFIC CONTROL AND PROTECTION AT TURN BAYS (TO REMAIN OPEN TO TRAFFIC)".
- SEE DETOUR PLAN FOR ADDITIONAL INFORMATION AND SIGNING.
- CONTRACTOR SHALL MAINTAIN TRAFFIC ALONG CASS AVENUE IN ACCORDANCE WITH IDOT STANDARD 701606.
- THIS SECTION OF NAPERVILLE ROAD SHALL BE CONSTRUCTED IN SUB-STAGES AS DIRECTED BY THE ENGINEER.
- SIGNS SHALL BE PLACED AT ALL COMMERCIAL DRIVEWAYS DURING CONSTRUCTION TO IDENTIFY OPENING LOCATIONS. SEE TEMPORARY DRIVEWAY SIGN DETAIL.



LEGEND:

- TEMPORARY WIDENING
- WORKING AREA, STAGE 1
- TRAFFIC DIRECTION
- BARRICADES OR DRUMS @ 50' C-C WITH STEADY BURN LIGHTS
- VERTICAL PANELS W/STEADY BURN LIGHT @ 50' C-C
- TYPE III BARRICADE W/2 STEADY BURN LIGHTS
- TRAFFIC CONTROL SIGNS
- ARROW BOARD



Illinois Firm Registration No. 04-00533

Stanley Consultants INC.
850 West Higgins Road, Suite 730
Chicago, Illinois 6063-2801
www.stanleygroup.com

REVISIONS	
NAME	DATE

ILLINOIS DEPARTMENT OF TRANSPORTATION

**SUGGESTED MAINTENANCE OF TRAFFIC PLAN
MAPLE AVENUE / CHICAGO AVENUE
STAGE 1
SHEET 2 OF 4**

SCALE: 1"=50'
DATE: 22-NOV-2004

DRAWN BY: E.D.
CHECKED BY: G.T.