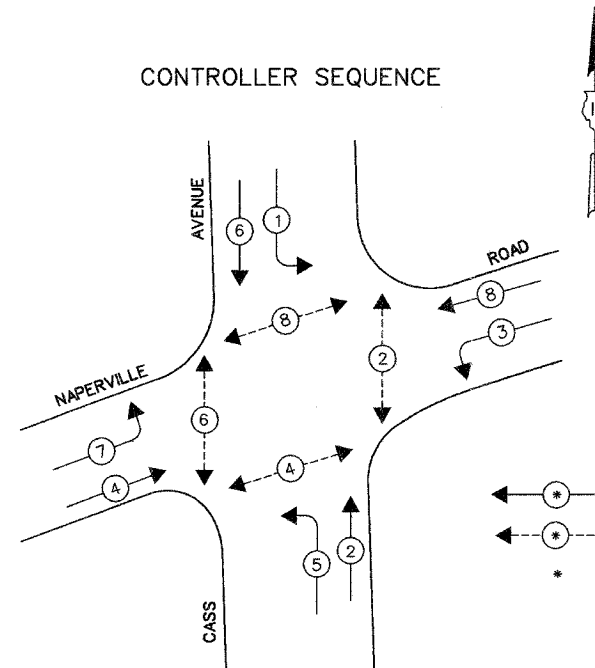


SCHEDULE OF QUANTITIES

QUANTITY	UNIT	ITEM
30	50 FT	SIGN PANEL - TYPE 1
324	FOOT	CONDUIT IN TRENCH, 2" DIA., GALVANIZED STEEL
109	FOOT	CONDUIT IN TRENCH, 2 1/2" DIA., GALVANIZED STEEL
57	FOOT	CONDUIT IN TRENCH, 4" DIA., GALVANIZED STEEL
348	FOOT	CONDUIT PUSHED, 2" DIA., GALVANIZED STEEL
310	FOOT	CONDUIT PUSHED, 4" DIA., GALVANIZED STEEL
5	EACH	HANDHOLE
4	EACH	HEAVY-DUTY HANDHOLE
2	EACH	DOUBLE HANDHOLE
445	FOOT	TRENCH AND BACKFILL FOR ELECTRICAL WORK
1	EACH	FULL-ACTUATED CONTROLLER AND TYPE IV CABINET, SPECIAL
1	FOOT	TRANSCEIVER-FIBER OPTIC
1177	FOOT	ELECTRIC CABLE IN CONDUIT, SIGNAL NO. 14 2C
1522	FOOT	ELECTRIC CABLE IN CONDUIT, SIGNAL NO. 14 3C
709	FOOT	ELECTRIC CABLE IN CONDUIT, SIGNAL NO. 14 5C
1395	FOOT	ELECTRIC CABLE IN CONDUIT, SIGNAL NO. 14 7C
1967	FOOT	ELECTRIC CABLE IN CONDUIT, LEAD-IN, NO. 14 1PAIR
98	FOOT	ELECTRIC CABLE IN CONDUIT, SERVICE, NO. 6 2C
4	EACH	TRAFFIC SIGNAL POST, GALVANIZED STEEL 16 FT.
1	EACH	STEEL MAST ARM ASSEMBLY AND POLE, 26 FT.
1	EACH	STEEL MAST ARM ASSEMBLY AND POLE, 28 FT.
1	EACH	STEEL MAST ARM ASSEMBLY AND POLE, 34 FT.
1	EACH	STEEL MAST ARM ASSEMBLY AND POLE, 38 FT.
16	FOOT	CONCRETE FOUNDATION, TYPE A
4	FOOT	CONCRETE FOUNDATION, TYPE D
60	FOOT	CONCRETE FOUNDATION, TYPE E 30-INCH DIAMETER
8	EACH	TRAFFIC SIGNAL BACKPLATE
9	EACH	INDUCTIVE LOOP DETECTOR
694	FOOT	PREFORMED DETECTOR LOOP
8	EACH	PEDESTRIAN PUSH-BUTTON
1	EACH	TEMPORARY TRAFFIC SIGNAL INSTALLATION
2	EACH	RELOCATE EXISTING EMERGENCY VEHICLE PRIORITY SYSTEM, DETECTOR UNIT
1	EACH	RELOCATE EXISTING EMERGENCY VEHICLE PRIORITY SYSTEM, PHASING UNIT
1	EACH	REMOVE EXISTING TRAFFIC SIGNAL EQUIPMENT
9	EACH	REMOVE EXISTING HANDHOLE
9	EACH	REMOVE EXISTING CONCRETE FOUNDATION
1	EACH	SERVICE INSTALLATION, POLE MOUNT
606	FOOT	ELECTRIC CABLE IN CONDUIT, GROUNDING, NO. 6 1C
273	FOOT	ELECTRIC CABLE IN CONDUIT NO. 20 3/C, TWISTED, SHIELDED
4	EACH	SIGNAL HEAD, L.E.D., I-FACE, 3-SECTION, MAST ARM MOUNTED
4	EACH	SIGNAL HEAD, L.E.D., I-FACE, 5-SECTION, BRACKET MOUNTED
4	EACH	SIGNAL HEAD, L.E.D., I-FACE, 5-SECTION, MAST ARM MOUNTED
8	EACH	PEDESTRIAN SIGNAL HEAD, L.E.D., I-FACE, BRACKET MOUNTED

* 100% COST TO THE VILLAGE OF WESTMONT

CONTROLLER SEQUENCE

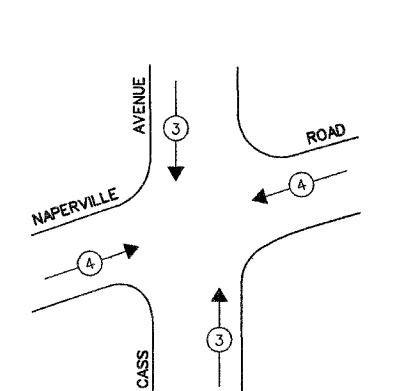


PHASE DESIGNATION DIAGRAM

LEGEND

- ← * → DUAL ENTRY PHASE
- ← * → PEDESTRIAN PHASE
- * NUMBER REFERS TO ASSOCIATED PHASE

EMERGENCY VEHICLE PREEMPTION SEQUENCE



PROPOSED EMERGENCY VEHICLE PREEMPTORS		
EMERGENCY VEHICLE PREEMPTOR	3	4
MOVEMENT	↑↓	↔

THE TRAFFIC SIGNAL CONTROL EQUIPMENT FOR THIS PROJECT SHALL BE 'ECONOLITE' TO MATCH THE EXISTING ADJACENT SYSTEM.

ILLINOIS DEPARTMENT OF TRANSPORTATION

PHASE DESIGNATION DIAGRAM
EMERGENCY VEHICLE PREEMPTION SEQUENCE
AND SCHEDULE OF QUANTITIES
NAPERVILLE ROAD AT CASS AVENUE

REVISIONS	
NAME	DATE

SCALE: N.T.S. DRAWN BY: BB
DESIGNED BY: PKG
DATE: SEPTEMBER 30, 2004 CHECKED BY: PKG