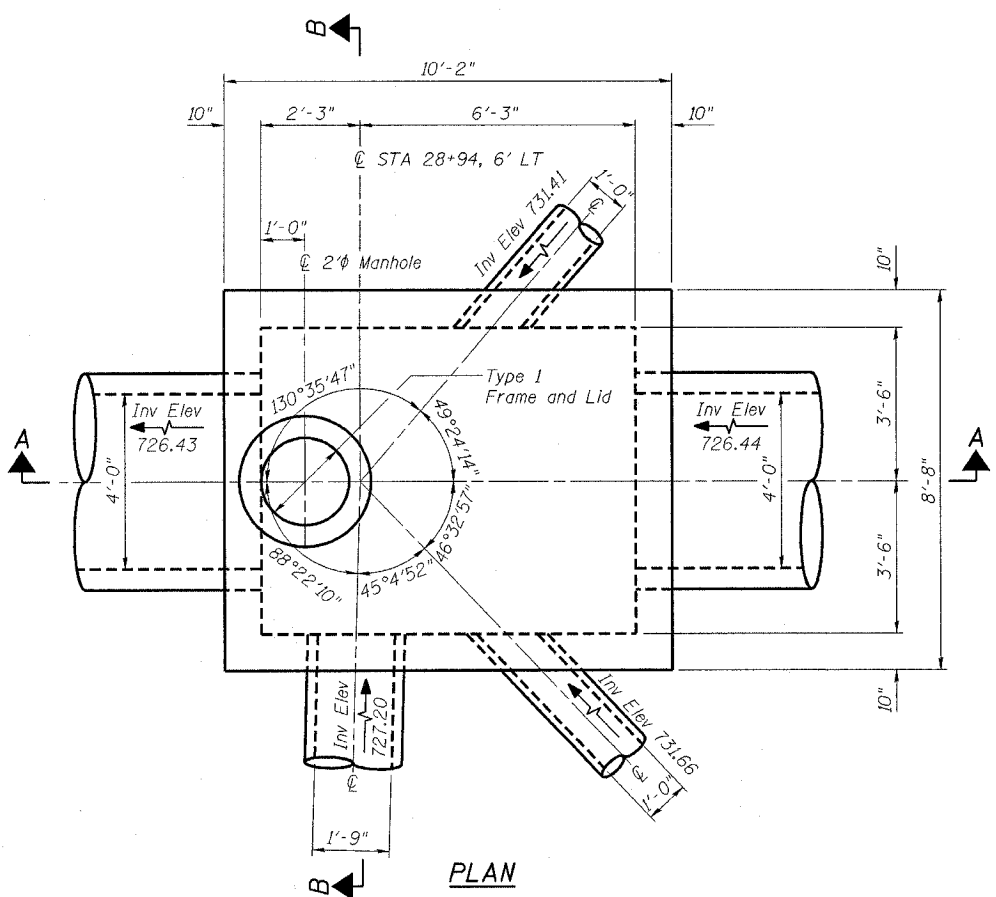


STATE OF ILLINOIS
DEPARTMENT OF TRANSPORTATION

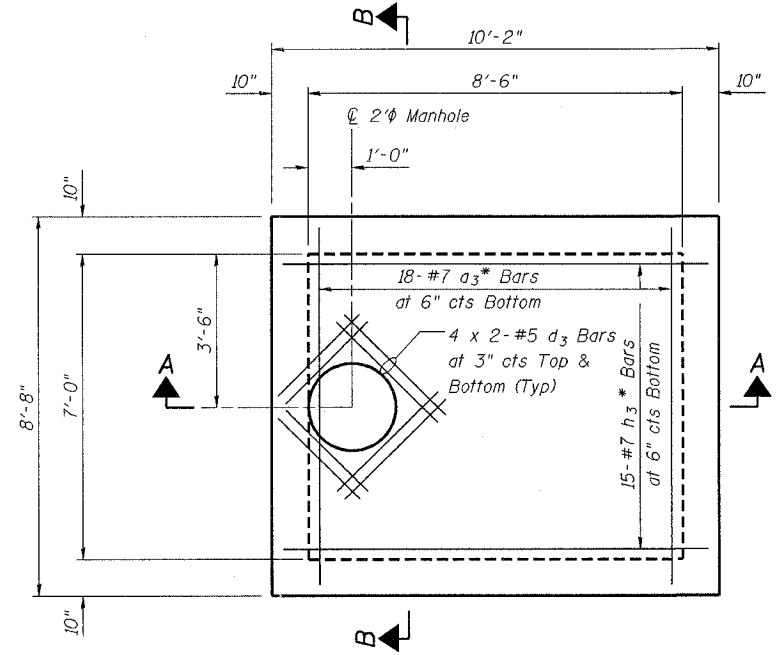
| | | | | |
|-----------------------|---------|----------|-------------------|-----------|
| ROUTE NO. | SECTION | COUNTY | SHEET | SHEET NO. |
| 1487 | 66R | DUPAGE | 4/2 | 178 |
| FED. ROAD DIST. NO. 7 | | ILLINOIS | FED. AID PROJECT- | |
| CONTRACT NO. 62376 | | | | |

BILL OF MATERIAL

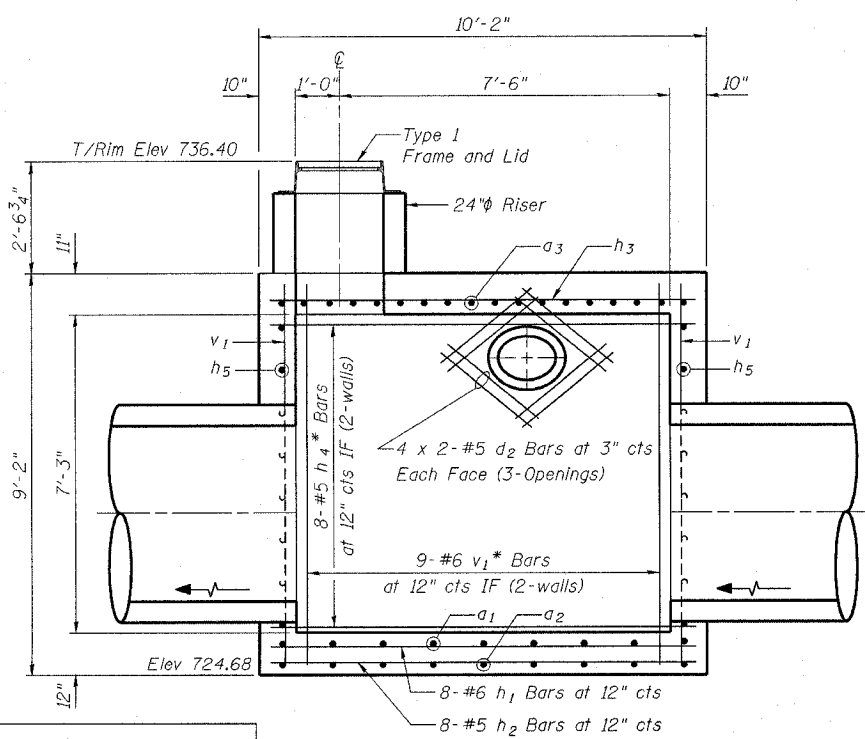
| Bar | No. | Size | Length | Shape |
|---------------------|-----|------|--------|-------|
| a ₁ | 9 | #6 | 9'-9" | U |
| a ₂ | 9 | #5 | 8'-5" | U |
| a ₃ | 18 | #7 | 10'-1" | U |
| h ₁ | 8 | #6 | 9'-11" | — |
| h ₂ | 8 | #5 | 9'-11" | — |
| h ₃ | 15 | #7 | 9'-11" | — |
| h ₄ | 16 | #5 | 9'-11" | — |
| h ₅ | 16 | #5 | 8'-5" | — |
| v ₁ | 48 | #6 | 8'-10" | — |
| d ₁ | 32 | #5 | 7'-0" | — |
| d ₂ | 48 | #5 | 4'-3" | — |
| d ₃ | 16 | #5 | 4'-0" | — |
| Concrete Structures | | | Cu yd | 12.5 |
| Reinforcement Bars | | | Lbs | 2,550 |



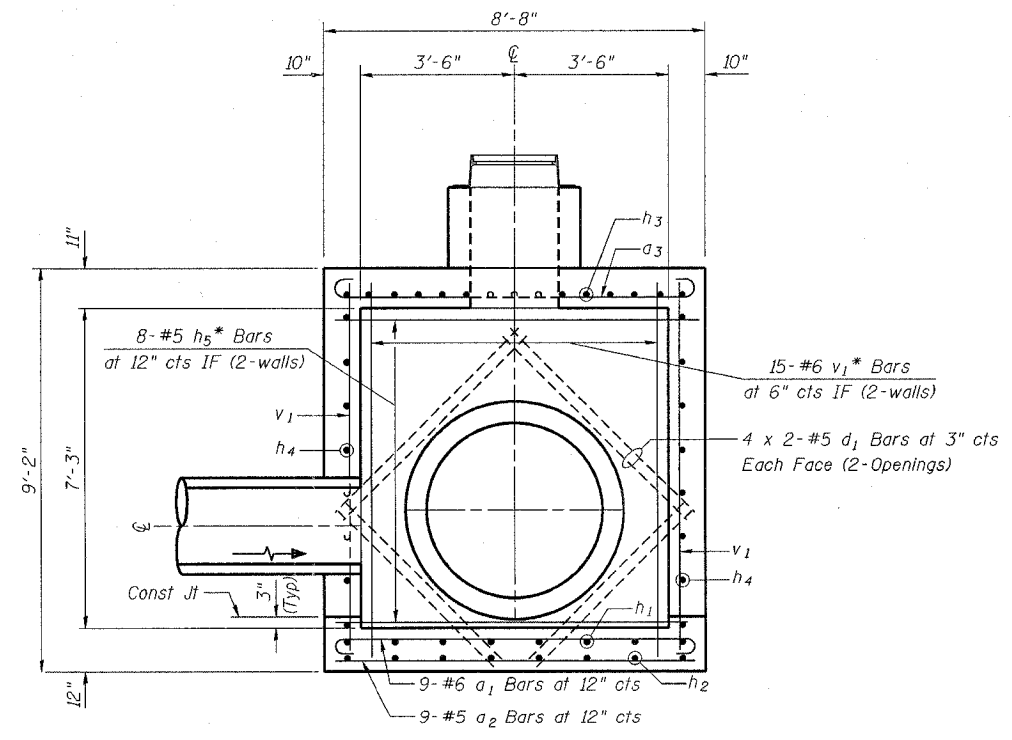
PLAN



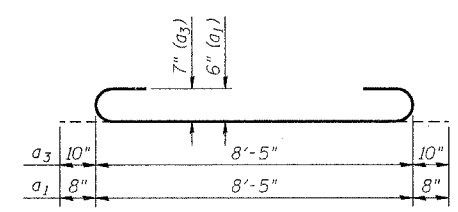
TOP SLAB PLAN



SECTION A-A



SECTION B-B



BAR a₁ & a₃

Notes:

- See Drainage & Utility drawings for location and culvert sizes.
 - Fillet Concrete in the bottom of Junction Chamber shall be provided for positive drainage as directed by the Engineer. Cost of the Fillet Concrete is included in the cost of Junction Chamber No. 6.
- * Cut bars at opening as required.

| | |
|----------|--------------|
| DESIGNED | BG |
| CHECKED | NLV |
| DRAWN | RTT |
| CHECKED | DSE |
| DATE | NOV 30, 2004 |

| REVISIONS | |
|-----------|------|
| NAME | DATE |
| | |
| | |
| | |
| | |
| | |
| | |
| | |
| | |
| | |

Illinois Firm Registration No. 04-00553

850 West Higgins Road, Suite 730
Chicago, Illinois 60639-2801
www.stanleyconsultants.com

ILLINOIS DEPARTMENT OF TRANSPORTATION

JUNCTION CHAMBER NO. 6
AT STA 28 + 94.6' LT
MAPLE AVENUE / CHICAGO AVENUE
SHEET 1 OF 2

SCALE: 1/2" = 1'-0"
DATE 22-NOV-2004

DRAWN BY RTT
CHECKED BY BG