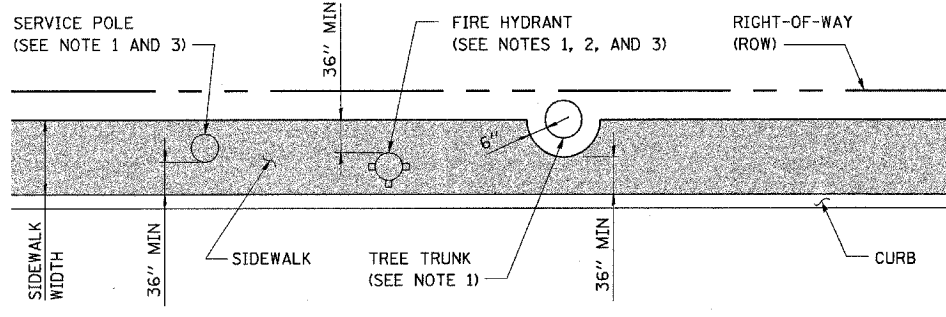
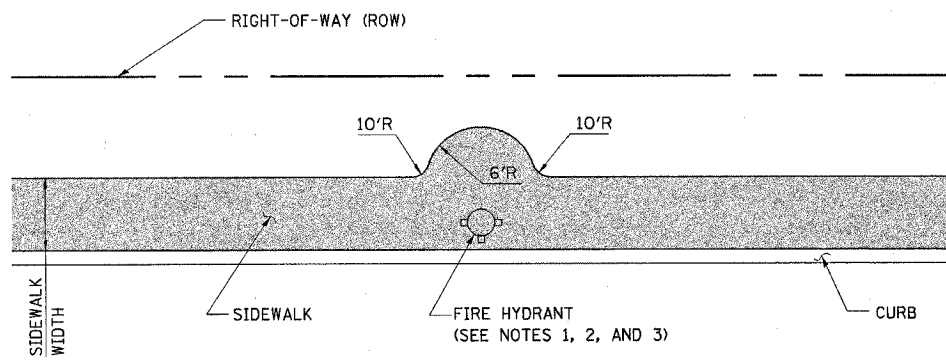


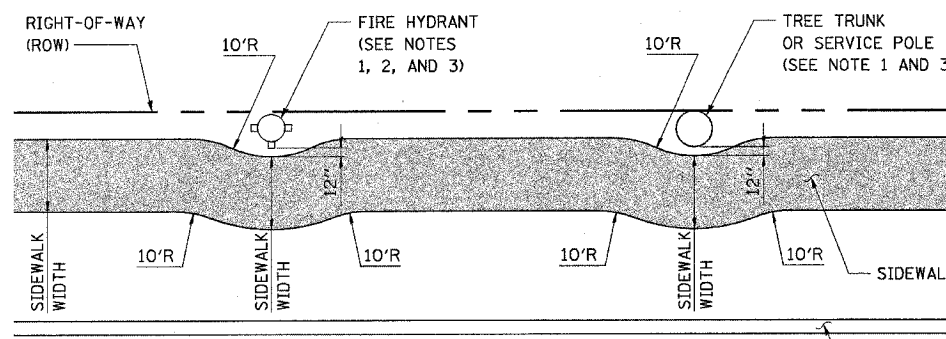
F.A.U. RTE.	SECTION	COUNTY	TOTAL SHEETS	SHEET NO.
1487	66R	DuPAGE	412	192
STA. 23+00.00		TO STA. 144+00.00		
FED. ROAD DIST. NO.		ILLINOIS FED. AID PROJECT		
CONTRACT NO. 62376				



IMMOVABLE OBJECTS
(CURB-TYPE SIDEWALK, NARROW ROW)



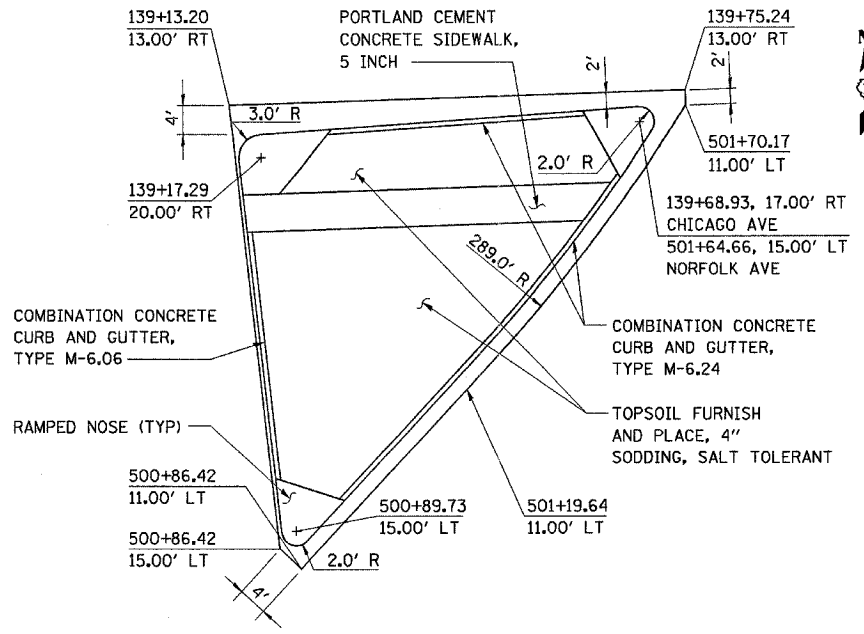
IMMOVABLE OBJECTS
(CURB-TYPE SIDEWALK, WIDE ROW)



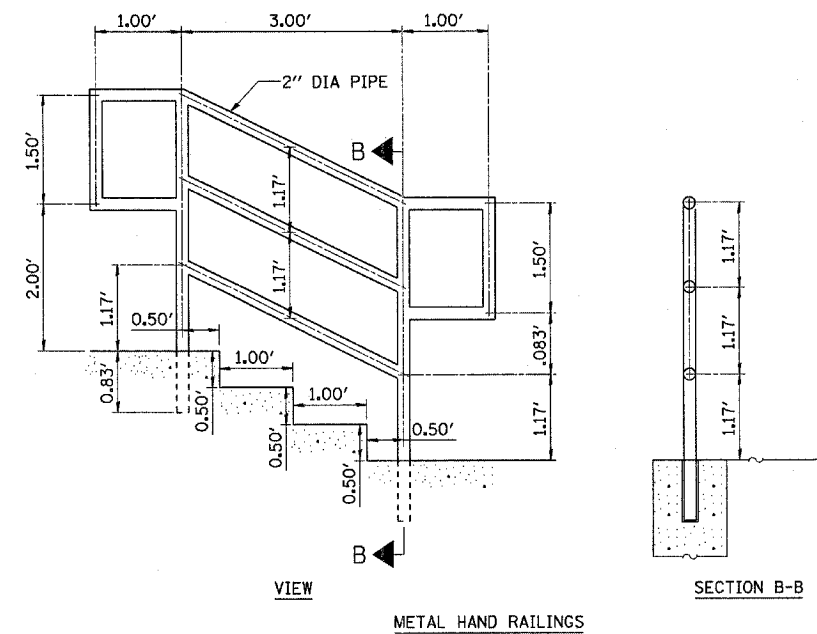
IMMOVABLE OBJECTS
(SIDEWALK WITH PARKWAY)

NOTES:

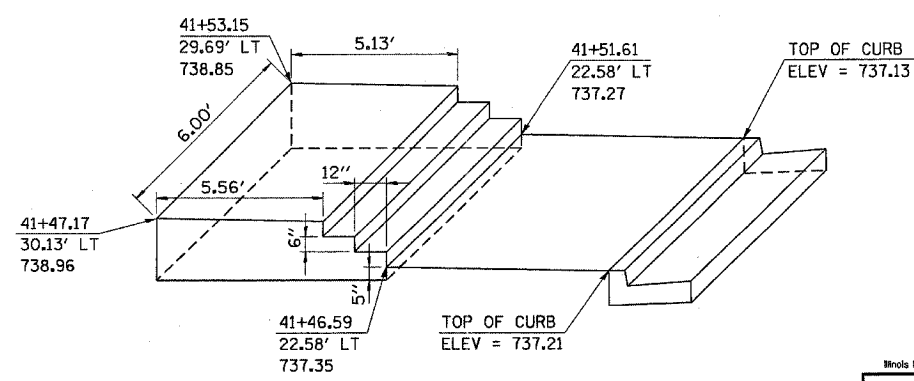
1. A FIRE HYDRANT, SERVICE POLE OR TREE TRUNK SHALL BE CONSIDERED IMMOVABLE ONLY WHEN DIRECTED BY THE ENGINEER.
2. THE VILLAGE OF WESTMONT WATER DEPARTMENT SHALL BE CONTACTED WHENEVER A FIRE HYDRANT IS FOUND TO BE IN THE PATH OF A NEW SIDEWALK, SO THAT THE FIRE HYDRANT CAN BE RELOCATED, IF POSSIBLE.
3. WHEN A SERVICE POLE OR FIRE HYDRANT IS LOCATED WITHIN THE SIDEWALK AREA, AND IS CONSIDERED IMMOVABLE, A 1/2" EXPANSION JOINT SHALL BE INSTALLED ENCIRCLING THE OBJECT.



ISLAND DETAIL
NORFOLK & CHICAGO AVENUES

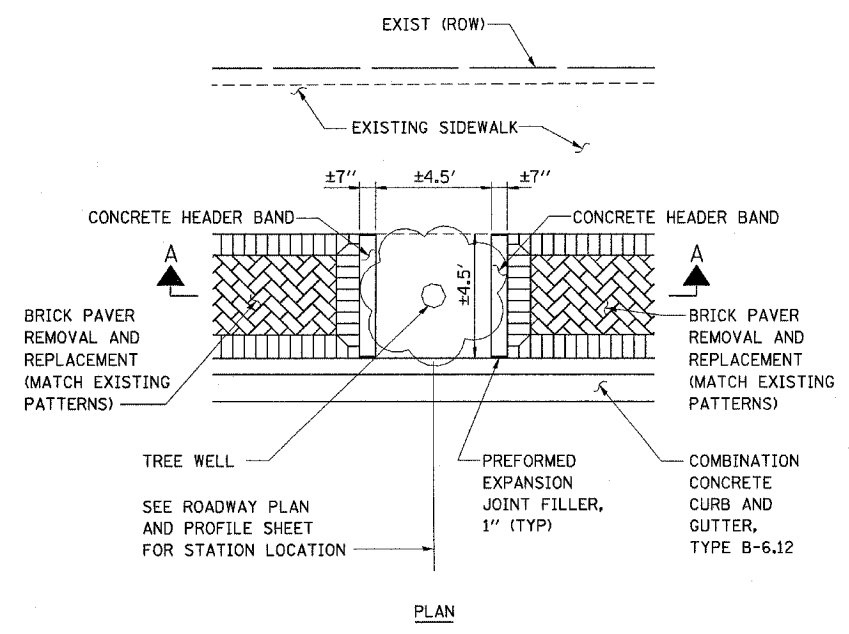


METAL HAND RAILINGS

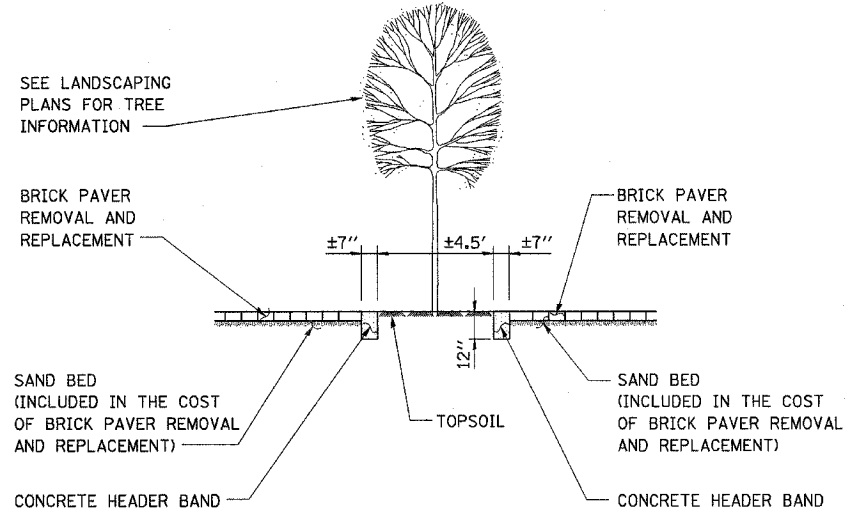


STAIR DETAIL

PROPOSED STAIR DETAIL @ STA 41+50



PLAN



SECTION A-A

CASS AVENUE PARKWAY DETAIL

Illinois Firm Registration No. 94-00533

850 West Higgins Road, Suite 730
Chicago, Illinois 60639-2000
www.stanleygroup.com

REVISIONS	
NAME	DATE

ILLINOIS DEPARTMENT OF TRANSPORTATION

ROADWAY DETAILS
MAPLE AVENUE / CHICAGO AVENUE

SCALE: NONE
DATE: 22-NOV-2004

DRAWN BY: E.D.
CHECKED BY: G.T.