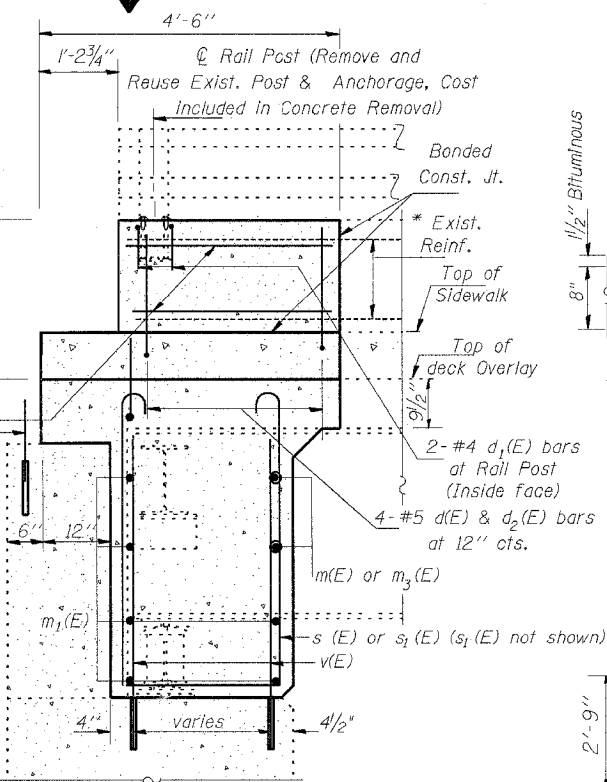
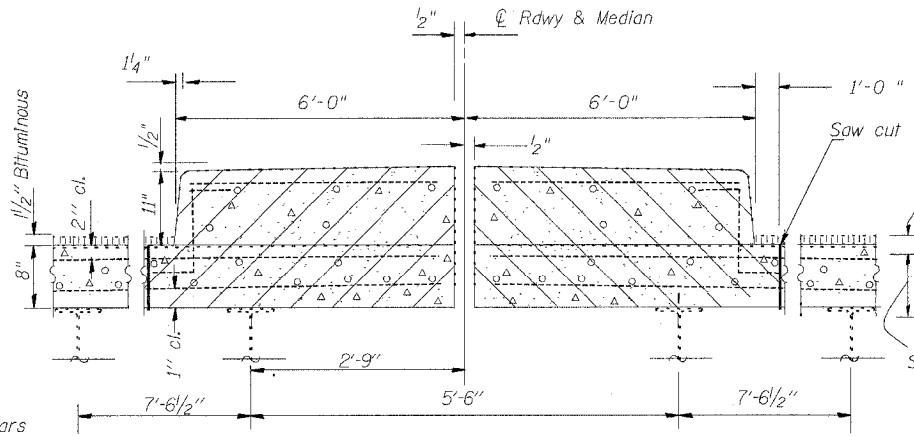


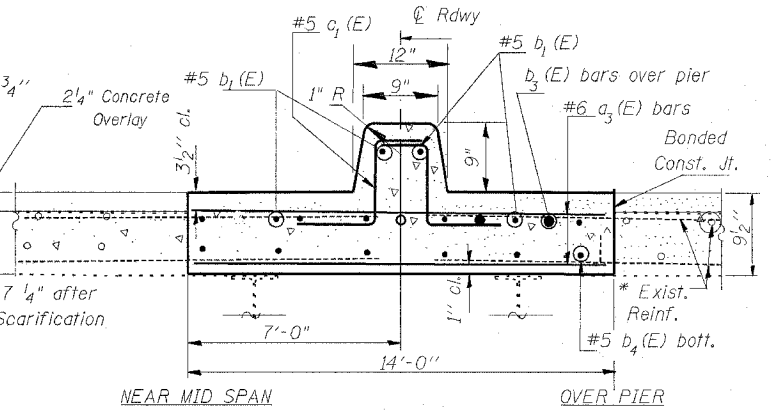
SECTION C-C (SHOWING CONCRETE REMOVAL)



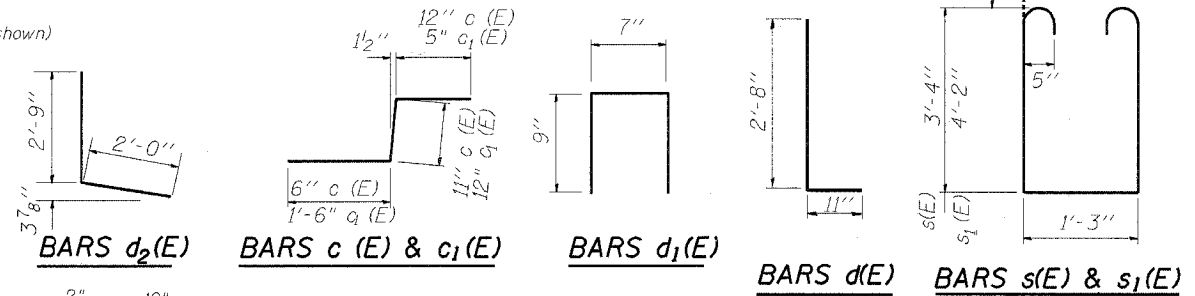
SECTION C-C (SHOWING CONCRETE REPLACEMENT)



SECTION D-D (SHOWING CONCRETE REMOVAL)



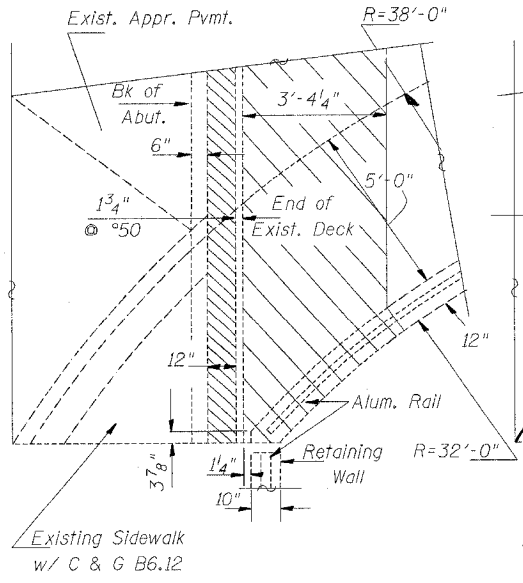
SECTION D-D (SHOWING CONCRETE REPLACEMENT)



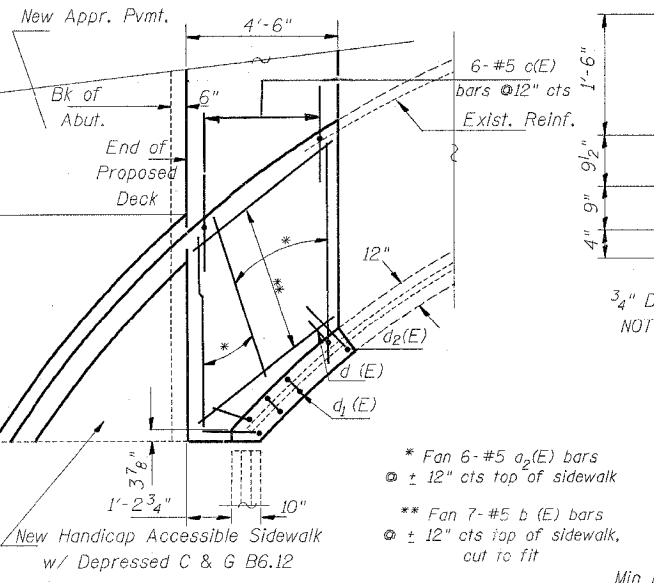
BILL OF MATERIAL

Bar	No.	Size	Length	Shape
a(E)	56	#6	20'-10"	
a ₁ (E)	28	#6	23'-10"	
a ₂ (E)	24	#5	7'-0"	
a ₃ (E)	290	#6	13'-8"	
b(E)	220	#5	4'-3"	
b ₁ (E)	42	#5	36'-6"	
b ₂ (E)	152	#5	4'-3"	
b ₃ (E)	15	#6	19'-6"	
b ₄ (E)	48	#5	27'-9"	
c(E)	24	#5	2'-5"	
c ₁ (E)	212	#5	2'-11"	
d(E)	16	#5	3'-7"	
d ₁ (E)	8	#4	2'-1"	
d ₂ (E)	16	#5	4'-9"	
e(E)	16	#4	3'-0"	
m(E)	8	#6	26'-6"	
m ₁ (E)	24	#6	26'-6"	
m ₂ (E)	16	#6	15'-6"	
m ₃ (E)	8	#6	13'-3"	
m ₄ (E)	48	#6	21'-0"	
s(E)	184	#5	9'-1"	
s ₁ (E)	16	#5	10'-9"	
v(E)	200	#5	4'-3"	
v ₁ (E)	246	#5	1'-10"	
Concrete Removal		Cu. Yd.	113.9	
Concrete Superstructure		Cu. Yd.	128.3	
Reinforcement Bars, Epoxy Coated		Pound	21,420	
Bar Splicers		Each	276	

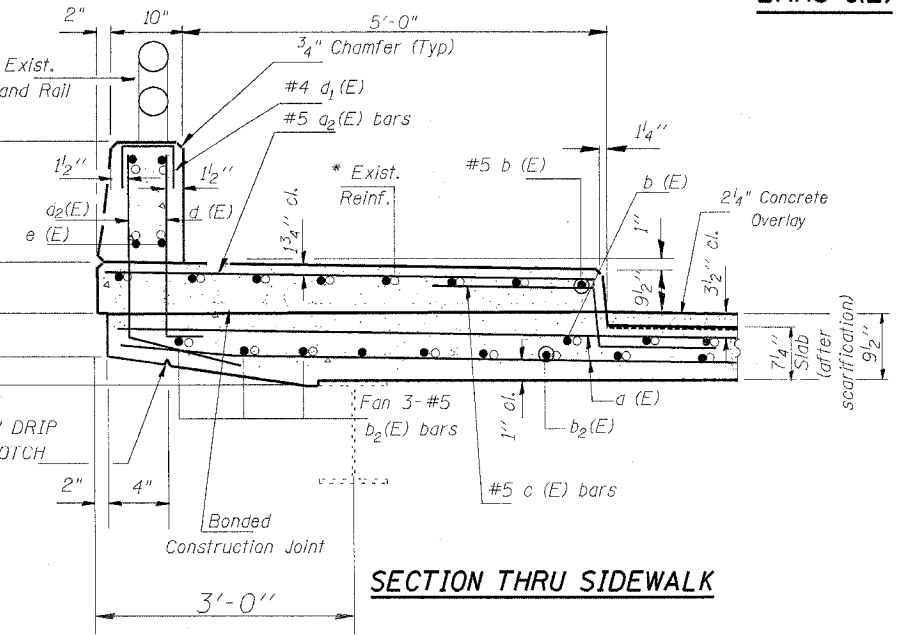
Reinforcement bars designated (E) shall be epoxy coated.



VIEW F-F EXISTING



VIEW F-F PROPOSED



SECTION THRU SIDEWALK

Min Bar Laps
 #5 bar - 1'-8"
 #6 bar - 2'-0" Longitudinal
 - 2'-7" Transverse

- ▲ Existing reinforcement bars extending into the removal area shall be cleaned, straightened and incorporated into the new construction.
- ▲▲ Epoxy grout #5 v(E) & v₁(E) bars in 7/8" φ drilled holes. See Std. Specs. Cost included with Reinforcement Bars, Epoxy Coated.

REVISIONS	
NAME	DATE

ILLINOIS DEPARTMENT OF TRANSPORTATION

BRIDGE PLAN
 LOC 1: US 12/ 45 OVER IL 64
 SN 016-0336

SCALE: VERT. HORIZ.
 DATE 4/18/2005

DRAWN BY
 CHECKED BY