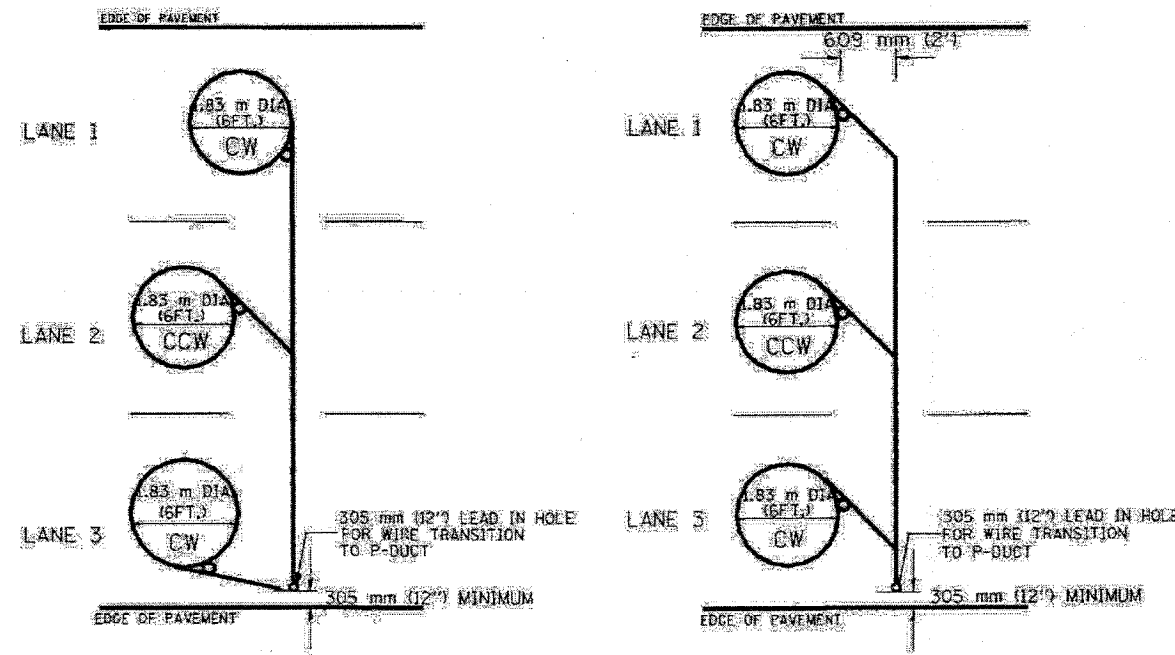


|              |           |        |                 |              |
|--------------|-----------|--------|-----------------|--------------|
| FAP<br>330   | SECTION   | COUNTY | TOTAL<br>SHEETS | SHEET<br>NO. |
| FAI<br>90/94 | 2004-1241 | COOK   | 36              | 29           |

CONTRACT 62603

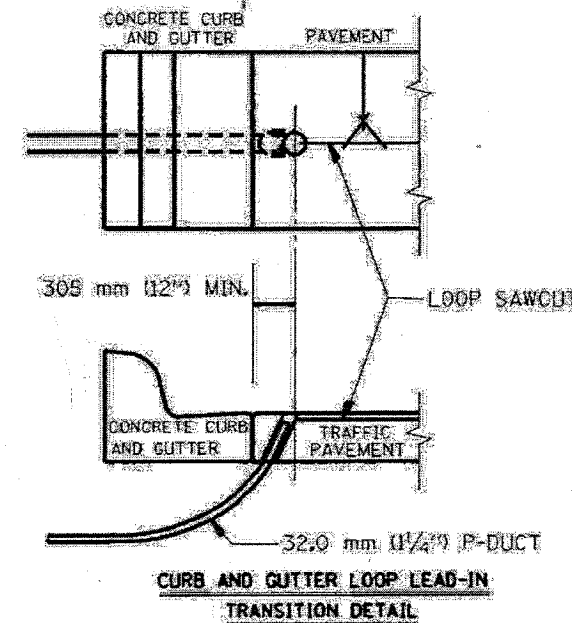


TYPICAL 1.83 m (6FT.) DIA. INDUCTION LOOP CORE DRILL  
LAYOUT FOR MULTIPLE LANE ROADWAY

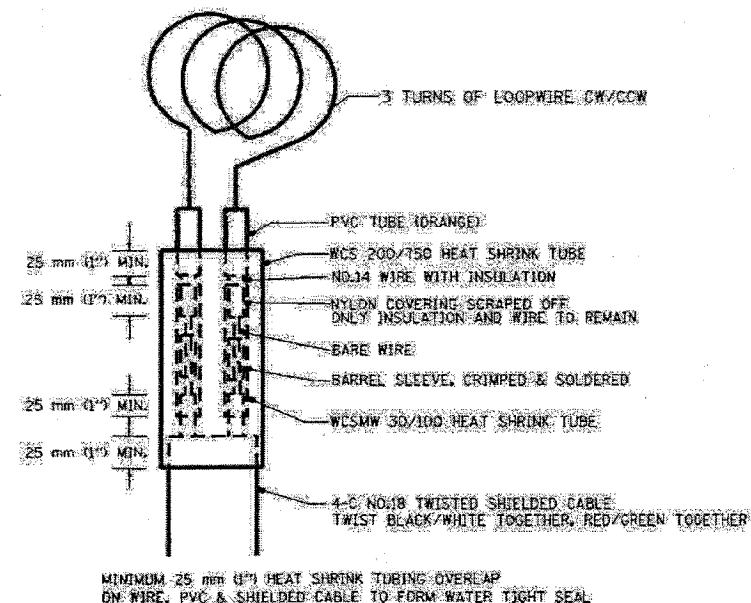
TYPICAL 1.83 m (6FT.) DIA. INDUCTION LOOP CORE DRILL  
LAYOUT FOR MULTIPLE LANE ROADWAY

NOTES

1. EACH LOOP SHALL BE SPliced TO A 4-C NO.18 TWISTED SHIELDED LEAD IN WHEN 45 m (150FT.) OR MORE FROM CABINET.
2. LOOPS SHALL BE SPliced IN HANDHOLES ONLY. OTHERWISE WRITTEN PERMISSION SHALL BE OBTAINED FROM TSC ENGINEER.
3. LOOPS SHALL NOT BE SPliced IN SERIES.
4. EACH LOOP LEAD IN SHALL BE IDENTIFIED AND PERMANENTLY COLOR CODED IN THE COREHOLE, HANDHOLE & CABINETS THRU WHICH THEY ENTER OR PASS AND TAGGED WITH THE CORRECT NOMENCLATURES.



CURB AND GUTTER LOOP LEAD-IN  
TRANSITION DETAIL



MINIMUM 25 mm (1\") HEAT SHRINK TUBING OVERLAP ON WIRE, PVC & SHIELDED CABLE TO FORM WATER TIGHT SEAL

LOOP SPlicing REQUIREMENTS

LOC 2: I 90/94

| REVISION | DATE  |
|----------|-------|
| DATE     | 6/94  |
| R.L.     | 10/95 |
| T.C.     |       |
|          |       |
|          |       |
|          |       |
|          |       |
|          |       |
|          |       |
|          |       |

ILLINOIS DEPARTMENT OF TRANSPORTATION  
TRAFFIC SYSTEMS CENTER  
**EXISTING  
ROUND INDUCTION LOOP  
TYPICALS**  
SCALE: NOT SHOWN  
DATE: 6-22-94  
DRAWN BY: GAK  
CHECKED BY: R.L.

TRAFFIC SYSTEMS CENTER (TY-ITSC-418#2)