

### COMBINED SEWER STRUCTURE SCHEDULE

STRUCTURE NUMBER	STATION	OFFSET	STRUCTURE TYPE		DIA.	FRAME & LID	TOP OF FRAME	N INV.	E INV.	S INV.	W INV.	DRAIN CONN. (FT)
			MH	CB								
C1	2023+30.08	206.2	RT	A(1/2 TRAP)	4'	T1F OL	16.29			11.50		5.34
C2	2024+82.23	212.6	RT	A(1/2 TRAP)	4'	T1F OL	16.18		11.39			5.34
C3	2210+55.82	119.8	RT	A(1/2 TRAP)	4'	T1F OL	16.23		11.44			5.34
C4	2262+00.40	118.8	RT	A(1/2 TRAP)	4'	T1F OL	7.68		2.89			5.34
C5	2265+10.75	131.0	RT	A(1/2 TRAP)	4'	T1F OL	7.73		2.94			5.34
C6	2317+69.58	126.4	RT	A(1/2 TRAP)	4'	T1F OL	8.30		3.51			5.34
C7	2322+16.16	148.5	RT	A(1/2 TRAP)	4'	T1F OL	9.09		4.30			5.34
C8	2323+52.38	156.6	RT	A(1/2 TRAP)	4'	T1F OL	8.97		4.18			5.34
C9	2324+90.05	164.7	RT	A(1/2 TRAP)	4'	T1F OL	8.92		4.13			5.34
C10	2328+04.40	179.6	RT	A(1/2 TRAP)	4'	T1F OL	8.59		3.80			5.34
C11	2340+42.97	159.4	RT	A(1/2 TRAP)	4'	T1F OL	7.61		2.82			5.34
C12	2326+19.73	171.9	RT	A(1/2 TRAP)	4'	T1F OL	8.81		4.02			
C13	2246+88.19	129.6	RT	A(1/2 TRAP)	4'	T1F OL	7.92		3.13			5.34
C14	NOT USED											
C15	2360+68.98	157.2	RT	A(1/2 TRAP)	4'	T1F OL	7.44		2.65			
C16	2320+95.2	141.5	RT	A(1/2 TRAP)	4'	T1F OL	9.03		4.24			5.34

### COMBINED SEWER SCHEDULE

PIPE NUMBER	UPSTREAM STATION	DOWNSTREAM STATION	TYPE	DIA. (IN)	LENGTH (FT)	SLOPE (%)
C12	2326+19.73	2326+19.10	ESVCP	8	7	0.44
C15	2360+68.98	2360+79.93	DIP TY-2	8	14	0.44

### NOTES:

- INDICATES CATCH BASIN WITH HALF TRAP, 4' DIAMETER, TYPE 1 FRAME & OPEN LID OR TYPE 20 FRAME & GRATE.
- INDICATES MANHOLE, TYPE A, 6' DIAMETER, TYPE 1 FRAME, CLOSED LID, RESTRICTOR PLATE.
- INDICATES SEWER LATERAL WITH 45° CONNECTION. SEE SHEET "DETAIL OF STORM SEWER CONNECTIONS TO SEWER."
- INDICATES SEWER LATERAL WITH 30° CONNECTION. SEE SHEET "DETAIL OF STORM SEWER CONNECTIONS TO SEWER."
- INDICATES SEWER LATERAL WITH 60° CONNECTION. SEE SHEET "DETAIL OF STORM SEWER CONNECTIONS TO SEWER."
- INDICATES MANHOLE TYPE A WITH FLAT SLAB TOP, IDOT STANDARD 602601.

### CASING SIZES

PIPE SIZE	CASING SIZE (OD)*	CASING WALL THICKNESS
12"	30"	0.500"
24"	42"	0.625"
30"	48"	0.688"
36"	48"	0.688"

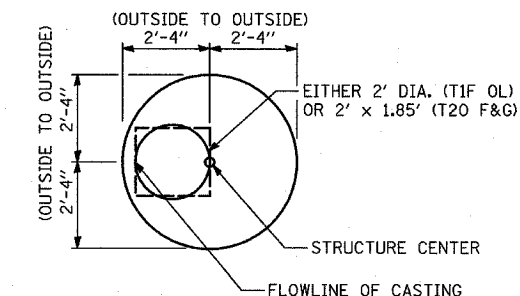
\*ALL STEEL CASING SHALL MEET OR EXCEED ASTM A-139, GRADE B.

SEE THE DRAINAGE & UTILITY PLANS FOR LOCATION OF ALL STRUCTURES.

CATCH BASIN STATIONS ARE MEASURED TO CENTER OF STRUCTURE.

CATCH BASIN OFFSETS ARE MEASURED TO FLOWLINE OF CASTING. (SEE BELOW)

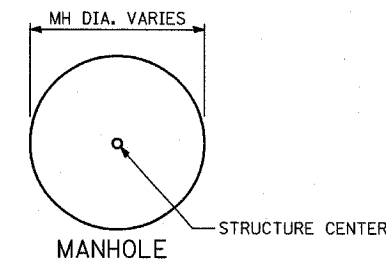
FLOWLINE OF CASTING IS LOCATED AT  $\phi$  OF STRUCTURE FOR CATCH BASINS LOCATED IN SWALE AND GORE AREAS.



### CATCH BASIN

(PRECAST REINFORCED CONCRETE SECTION)

MANHOLE STATIONS AND OFFSETS ARE MEASURED TO CENTER OF STRUCTURE. (SEE BELOW)



### MANHOLE RECONSTRUCTION SCHEDULE

STRUCTURE NUMBER	STATION	OFFSET	STRUCTURE DATA		EXISTING RIM EL	PROPOSED RIM EL
			MH TA	DROP MH		
118	2239+80.04	82.12	RT	10' DIA	3.81	0.38
122	2264+77.61	73.76	RT	6' DIA	-0.42	-2.67
130	2316+16.41	78.30	RT	7' DIA	-0.46	-3.71
151	2348+84.41	142.61	RT	8' DIA	6.73	4.29

### STRUCTURE EXCAVATION SCHEDULE

STRUCTURE NUMBER	STATION	OFFSET	POROUS GRANULAR EMBANKMENT (CU YD) (PAY ITEM 20700220)	ROCK EXCAVATION FOR STRUCTURES (CU YD) (PAY ITEM 50200400)	BRACED EXCAVATION (CU YD) (PAY ITEM X0320870)	
3A6	205+18.00	64.5	LT	173	49	238
3C4	216+38.39	30.8	RT	227	47	287
132	2239+87.87	75.3	LT	80	0	100

REVISIONS	
NAME	DATE
ADDENDUM 1	05/27/05
REVISED	05/06/05
REVISED	04/15/05