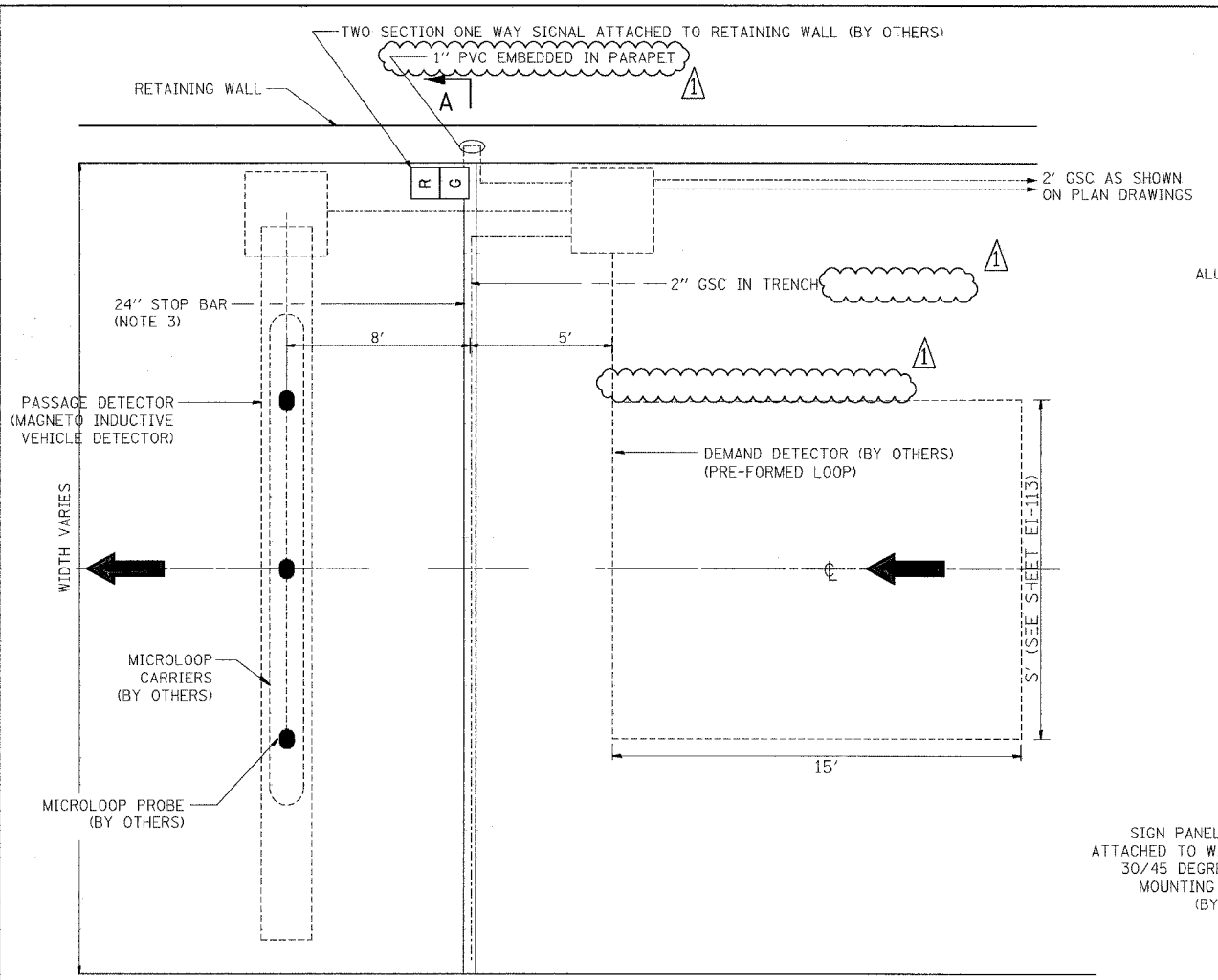
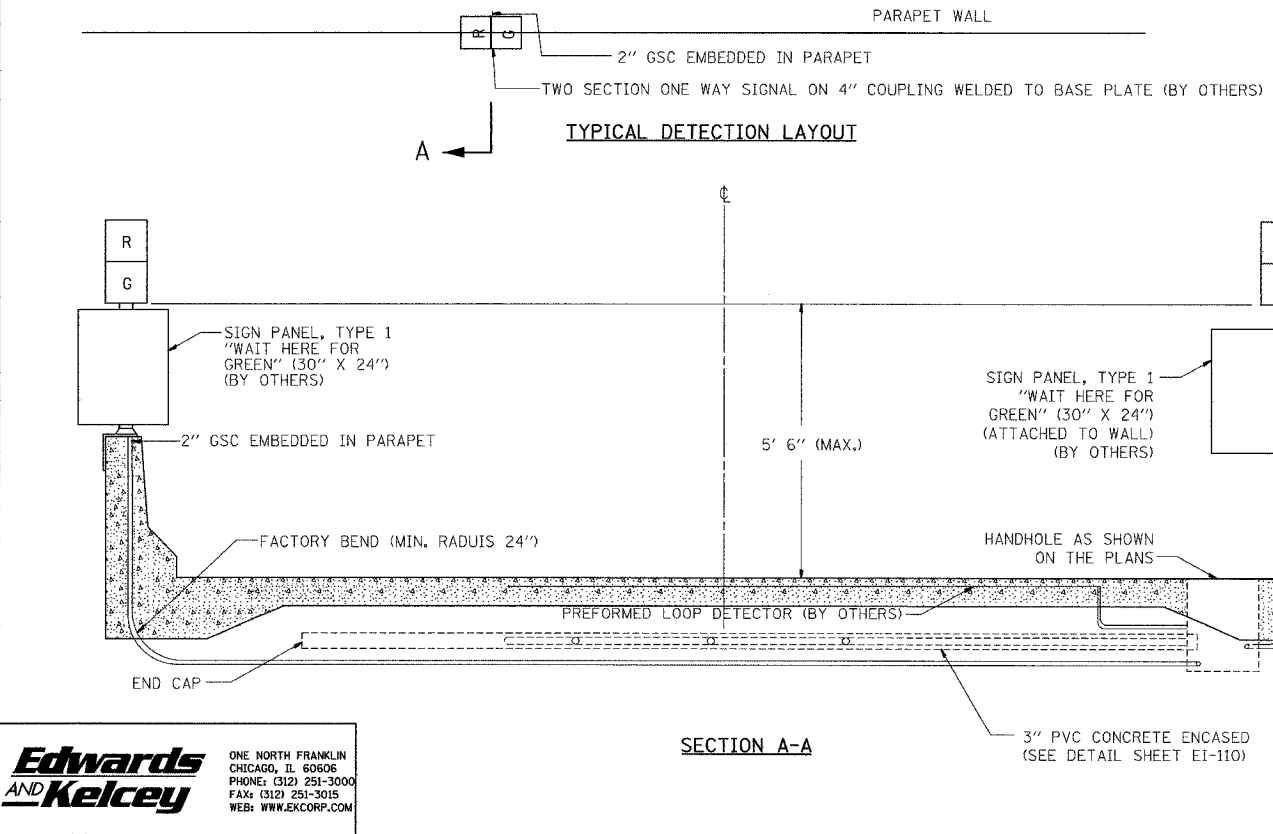


F.A.I. RTE.	SECTION	COUNTY	TOTAL SHEETS	SHEET NO.
94		COOK	860	348
STA. --- TO STA. ---		FED. AID PROJECT		
FED. ROAD DIST. NO. 1 ILLINOIS		* (1516.1, 1717 & 1818) R-9		

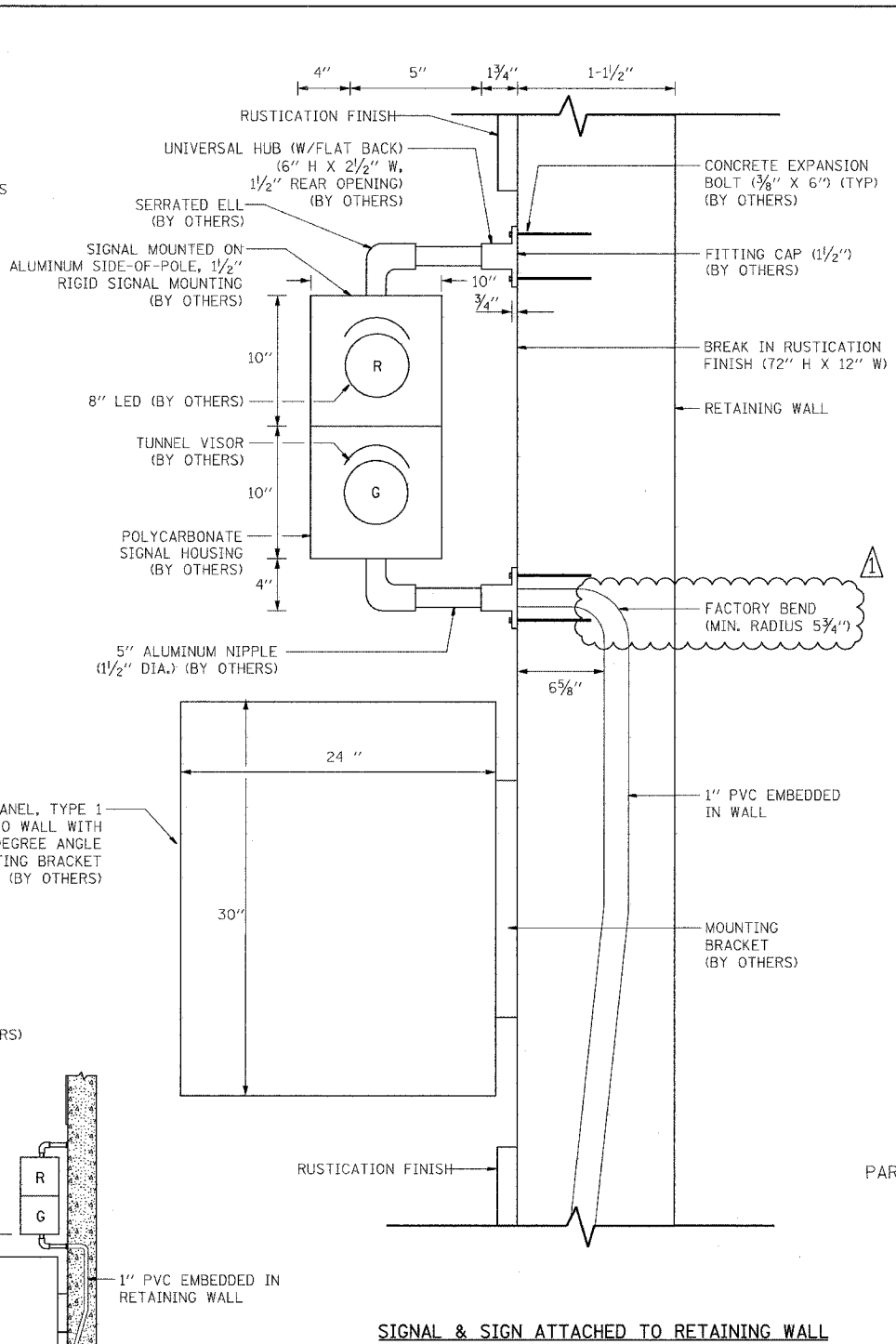
6269
 JVS/Contract 17A Details/REV 00V/142E-S/17



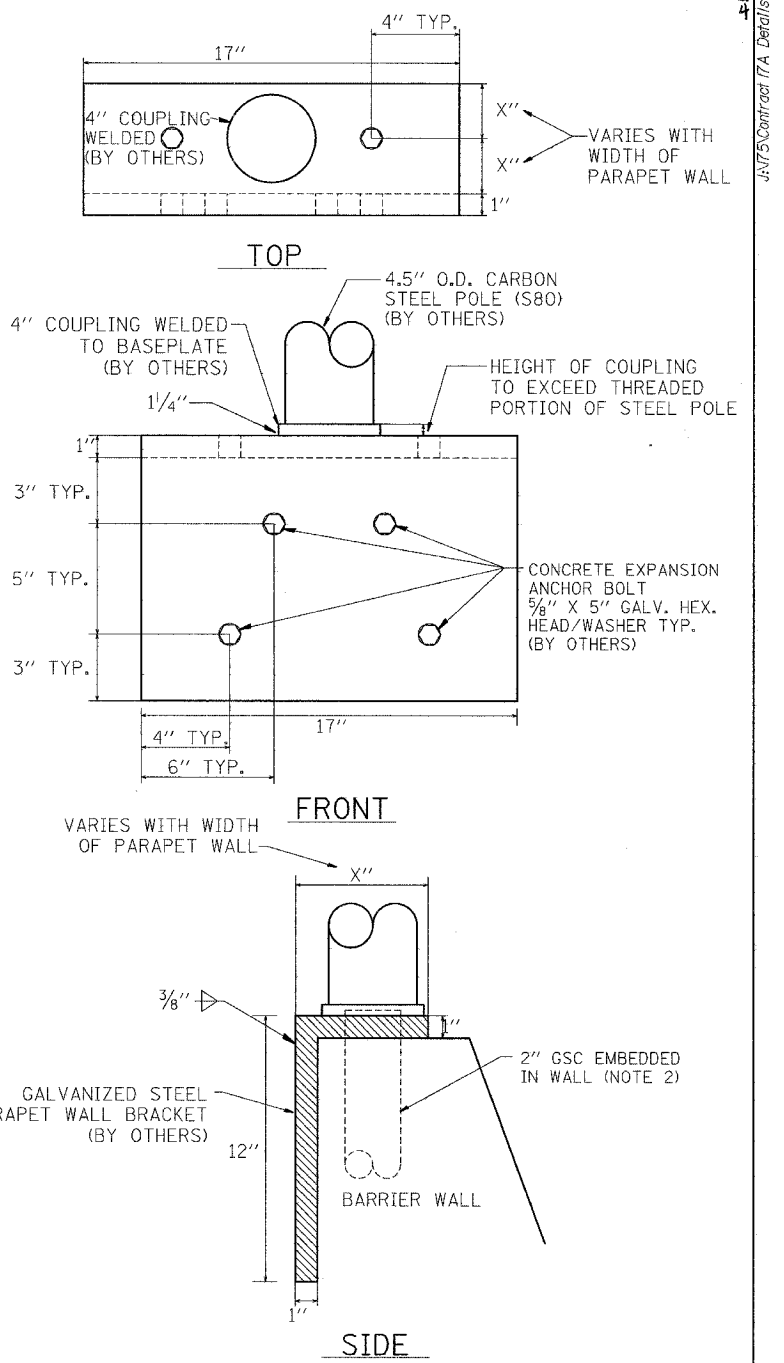
TYPICAL DETECTION LAYOUT



SECTION A-A



SIGNAL & SIGN ATTACHED TO RETAINING WALL



SIGNAL MOUNTED ON PARAPET WALL

- NOTES:
- CONDUIT AND HANDHOLE MUST BE FURNISHED AND INSTALLED UNDER THIS CONTRACT. ALL CABLES, PROBES, SIGNALS, SIGNS, AND OTHER EQUIPMENT WILL BE FURNISHED AND INSTALLED BY OTHERS UNDER CONTRACT NUMBER 62583.
 - CONDUIT MUST BE STUBBED OUT OF CONCRETE A MINIMUM OF 3".
 - CENTERLINE OF STOP BAR AND TRAFFIC SIGNALS SHALL BE LOCATED AT THE STATION SHOWN ON THE PLANS.

Edwards AND Kelcey
 ONE NORTH FRANKLIN
 CHICAGO, IL 60606
 PHONE: (312) 251-3000
 FAX: (312) 251-3015
 WEB: WWW.EKCORP.COM

REVISIONS	
NAME	DATE
ADDENDUM 1	5/21/05

ILLINOIS DEPARTMENT OF TRANSPORTATION
 F.A.I. 90/94 (DAN RYAN EXPRESSWAY)
**TYPICAL RAMP METERING
 BARRIER WALL AND
 RETAINING WALL INSTALLATION**
 SCALE: NTS DRAWN BY: NB
 DATE: MARCH 25, 2005 CHECKED BY: CTC

17A/EI-114
 5/26/2005 4:02:01 PM