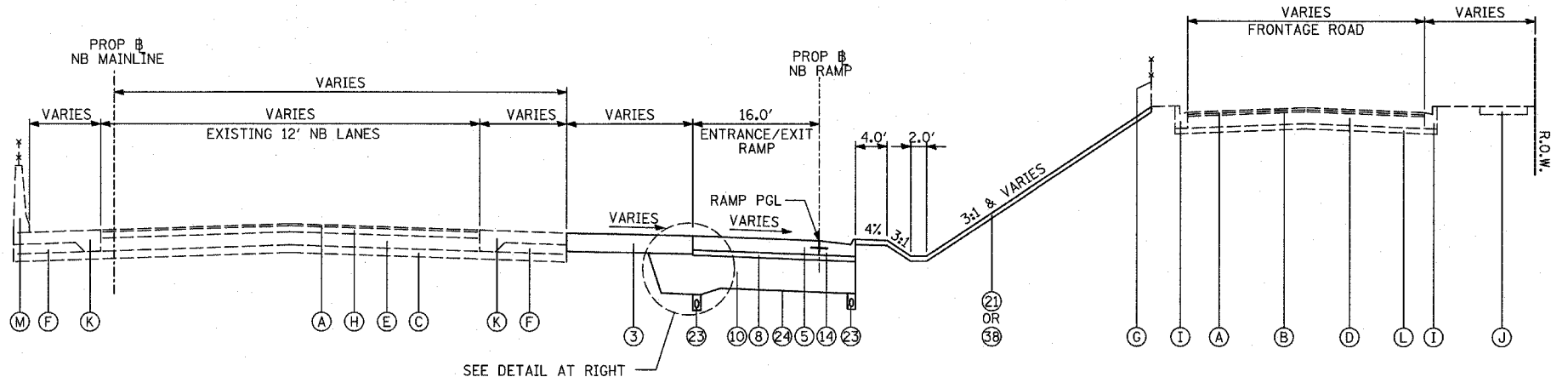
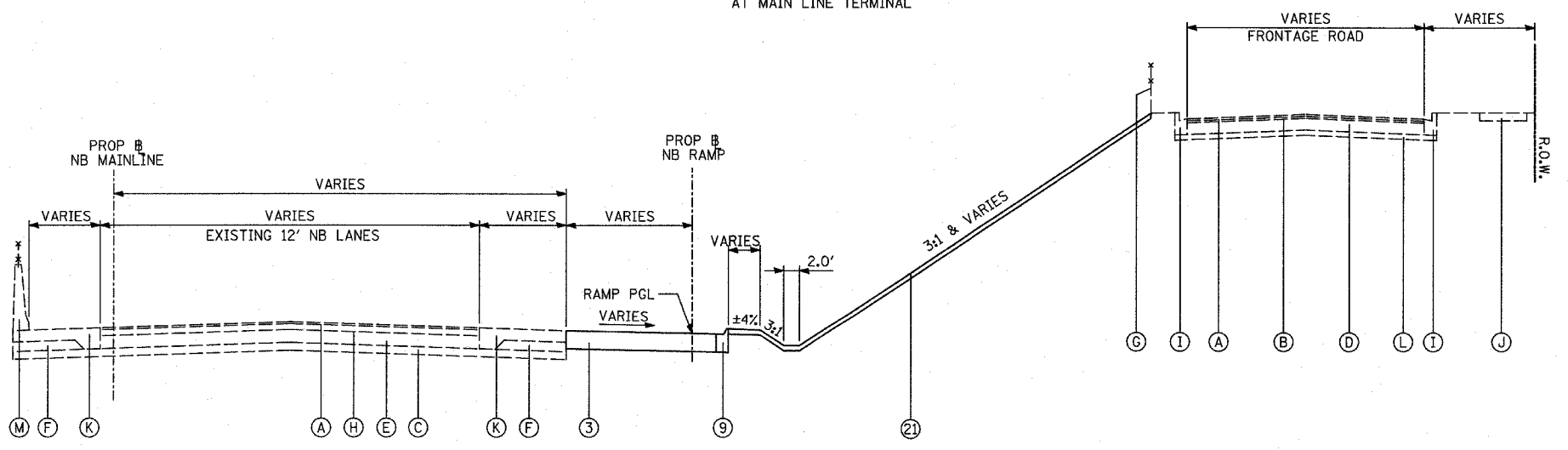


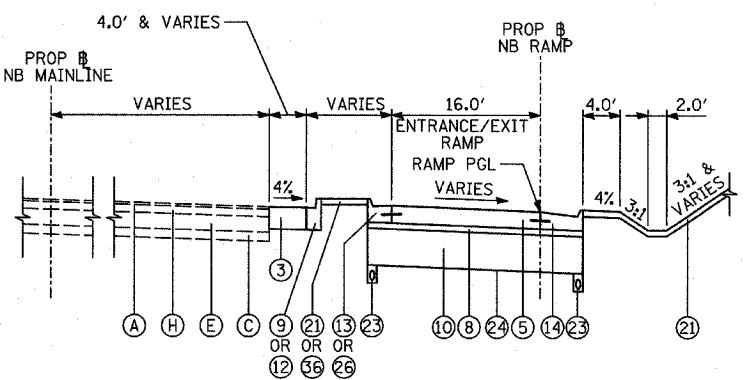
PROPOSED NB ENTRANCE/EXIT RAMP
 PROPOSED RAMP WITH RETAINING WALL ON BOTH SIDES
 (ADJACENT TO BACK OF SHOULDER/CURB)



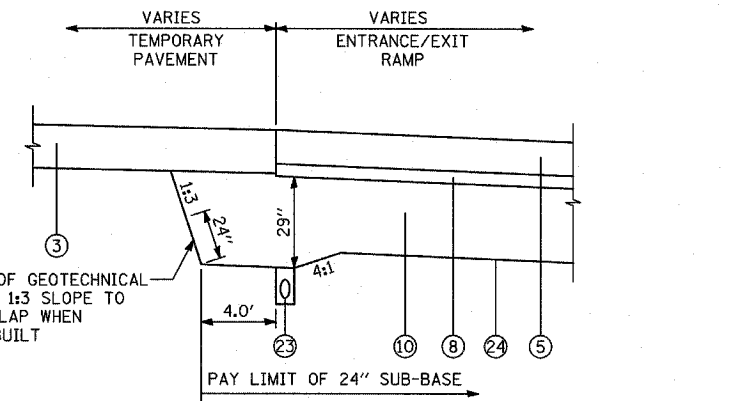
PROPOSED NB ENTRANCE/EXIT RAMP
 AT MAIN LINE TERMINAL



PROPOSED NB ENTRANCE/EXIT RAMP
 AT MAIN LINE TERMINAL



PROPOSED NB ENTRANCE/EXIT RAMP DETAIL
 AT MAIN LINE TERMINAL



SUBGRADE TRANSITION DETAIL
 RAMP PAVEMENT ADJACENT TO TEMPORARY PAVEMENT

NOTE: ADDITIONAL THICKNESS OF SUB-BASE GRANULAR MATERIAL SHALL BE INCLUDED IN THE COST OF SUB-BASE GRANULAR MATERIAL, TYPE B 24".

REVISIONS	
NAME	DATE

ILLINOIS DEPARTMENT OF TRANSPORTATION
 F.A.I. 94 (DAN RYAN EXPRESSWAY)

PROPOSED TYPICAL SECTIONS
 NB ENTRANCE/EXIT RAMP
 (SHEET 3 OF 5)

SCALE: NONE
 DATE: MARCH 18, 2005
 DRAWN BY: MPG
 CHECKED BY: JPM

03/25/2005 10:27:41 AM