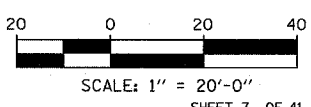
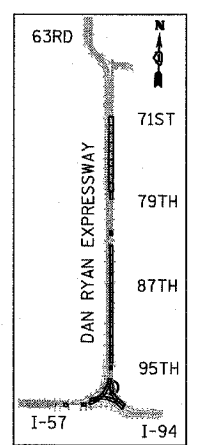
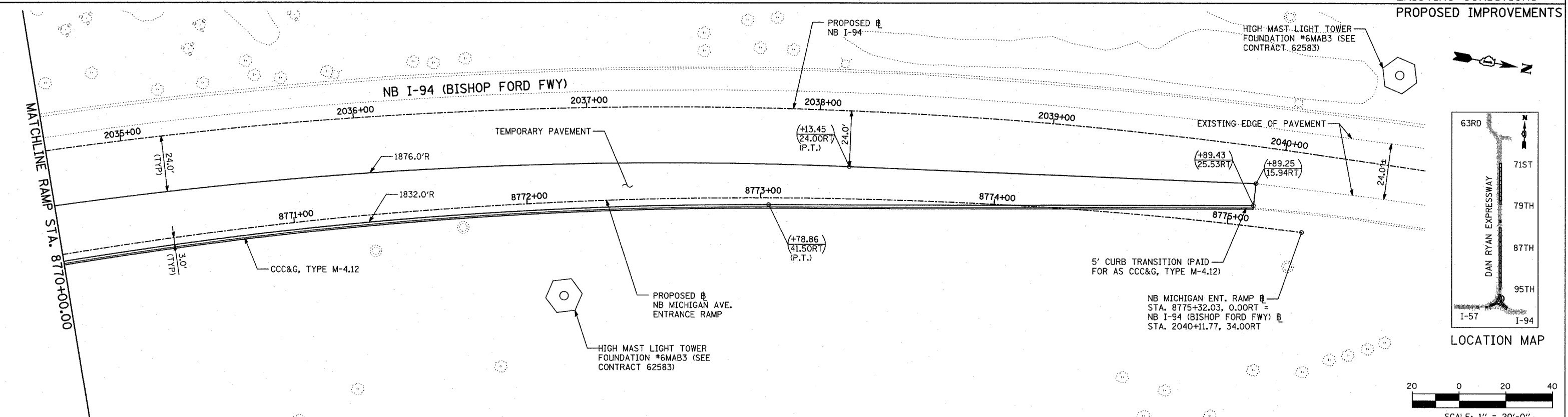
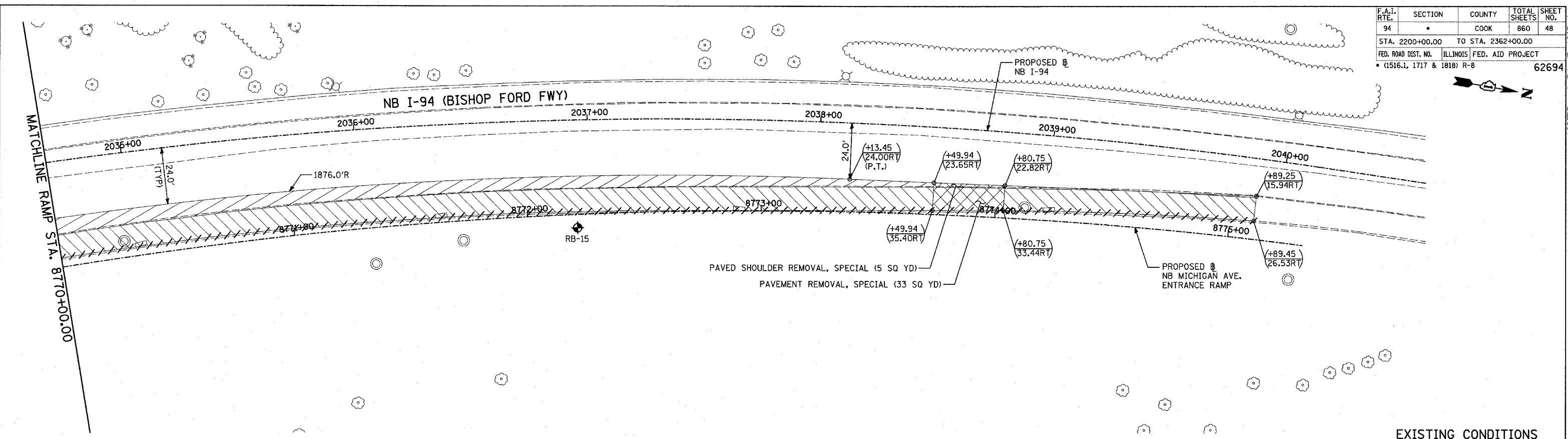


F.A.I. RTE.	SECTION	COUNTY	TOTAL SHEETS	SHEET NO.
94		COOK	860	48
STA. 2200+00.00 TO STA. 2362+00.00				
FED. ROAD DIST. NO.		ILLINOIS	FED. AID PROJECT	
		(1516.1, 1717 & 1818) R-8		62694



LEGEND:

- PAVEMENT REMOVAL
- PAVED SHOULDER REMOVAL
- PAVEMENT/SHOULDER REMOVAL, SPECIAL
- COMB CONC CURB & GUTTER REMOVAL
- CHAIN LINK FENCE REMOVAL
- CONCRETE BARRIER/GUARDRAIL REMOVAL
- TREE REMOVAL (UNITS) (NO UNIT SHOWN = <6)
- SOIL BORING LOCATIONS
- LIGHT POLE FOUNDATION REMOVAL (SEE EXISTING ELECTRICAL PLANS)

- (+XX.XX) MAINLINE B STATION/OFFSET
- (XX.XXRT) STATION/OFFSET
- +XX.XX RAMP B
- XX.XXRT STATION/OFFSET

- NOTES:**
- ALL STATION/OFFSET/RADIUS CALLOUTS MEASURED TO EDGE OF PAVEMENT UNLESS OTHERWISE NOTED.
 - EXACT LOCATIONS OF EXISTING PIERS/ABUTMENTS TO BE FIELD VERIFIED

REVISIONS	
NAME	DATE

ILLINOIS DEPARTMENT OF TRANSPORTATION
 F.A.I. 94 (DAN RYAN EXPRESSWAY)
EXISTING AND PROPOSED PLAN
 NB MICHIGAN AVENUE ENTRANCE RAMP
 RAMP STA. 8770+00.00 TO 8775+10.24
 SCALE: 1"=20'
 DATE: MARCH 18, 2005
 DRAWN BY: MPG
 CHECKED BY: JPM

TYLIN INTERNATIONAL