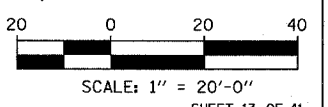
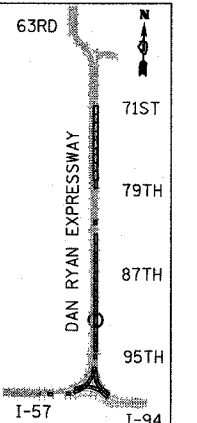
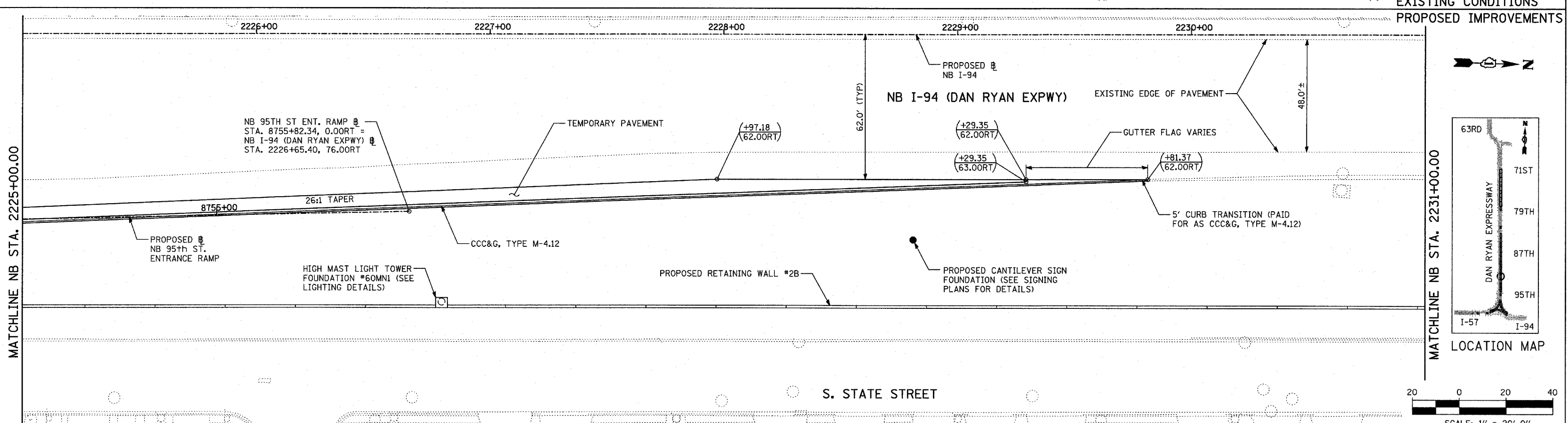
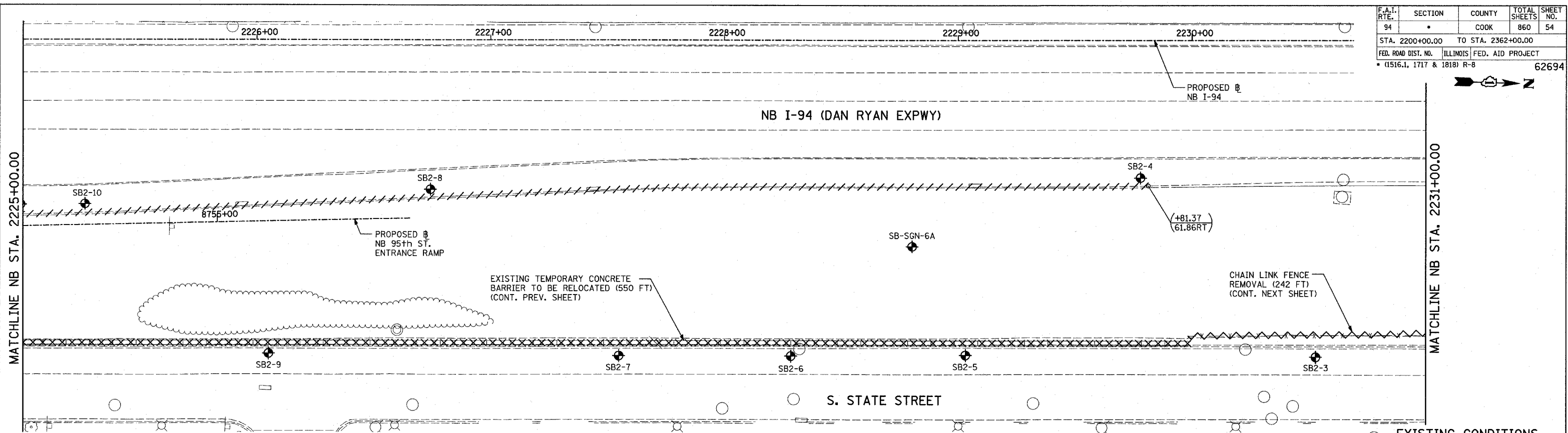


F.A.I. RTE.	SECTION	COUNTY	TOTAL SHEETS	SHEET NO.
94		COOK	860	54
STA. 2200+00.00 TO STA. 2362+00.00				
FED. ROAD DIST. NO. ILLINOIS		FED. AID PROJECT		
(1516.1, 1717 & 1818) R-8		62694		



**LEGEND:**

- PAVEMENT REMOVAL
- PAVED SHOULDER REMOVAL
- PAVEMENT/SHOULDER REMOVAL, SPECIAL
- COMB CONC CURB & GUTTER REMOVAL
- CHAIN LINK FENCE REMOVAL
- CONCRETE BARRIER/GUARDRAIL REMOVAL
- TREE REMOVAL (UNITS) (NO UNIT SHOWN = <6)
- SOIL BORING LOCATIONS
- LIGHT POLE FOUNDATION REMOVAL (SEE EXISTING ELECTRICAL PLANS)

- $(+XX.XX)$  MAINLINE  $\#$  STATION/OFFSET
- $(XX.XXRT)$  STATION/OFFSET
- $+XX.XX$  RAMP  $\#$  STATION/OFFSET
- $XX.XXRT$  STATION/OFFSET

- NOTES:**
- ALL STATION/OFFSET/RADIUS CALLOUTS MEASURED TO EDGE OF PAVEMENT UNLESS OTHERWISE NOTED.
  - EXACT LOCATIONS OF EXISTING PIERS/ABUTMENTS TO BE FIELD VERIFIED

REVISIONS	
NAME	DATE

ILLINOIS DEPARTMENT OF TRANSPORTATION  
 F.A.I. 94 (DAN RYAN EXPRESSWAY)  
 EXISTING AND PROPOSED PLAN  
 NB 95th STREET ENTRANCE RAMP  
 AND RETAINING WALL #2B  
 NB I-94 STA. 2225+00.00 TO 2231+00.00  
 SCALE: 1" = 20'-0"  
 DATE: MARCH 18, 2005  
 DRAWN BY: MPG  
 CHECKED BY: JPM

TYLIN INTERNATIONAL

03/25/2005 10:02:42 AM