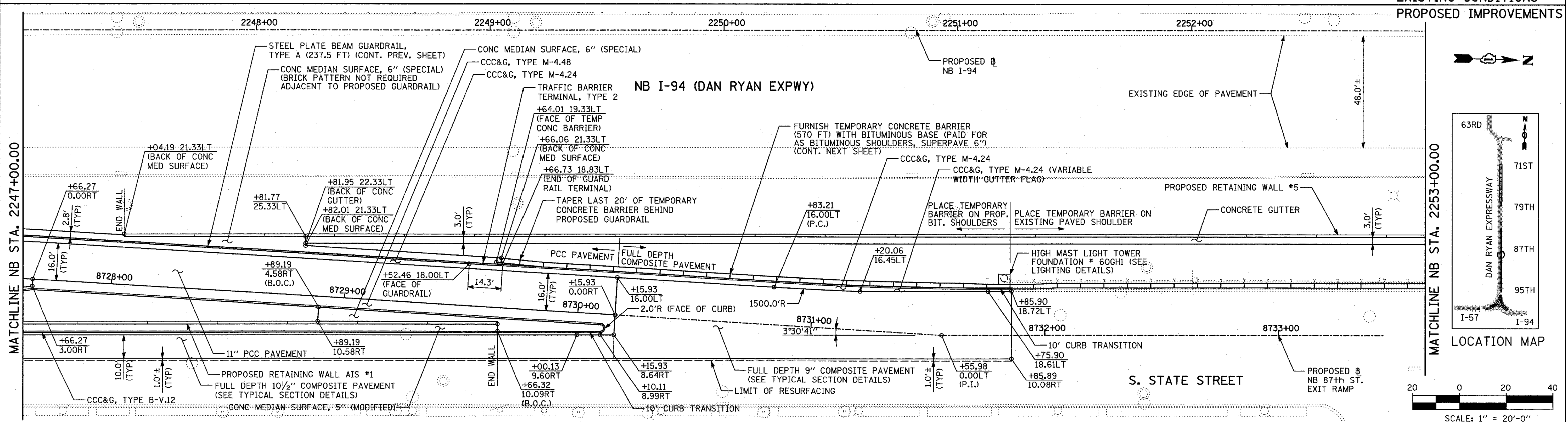
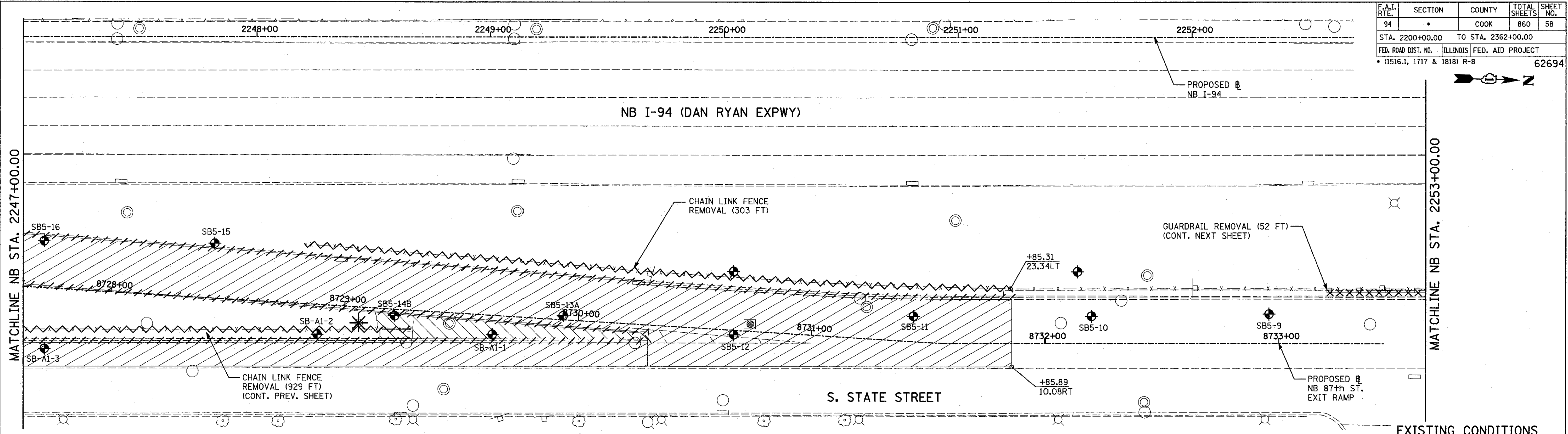


F.A.I. RTE.	SECTION	COUNTY	TOTAL SHEETS	SHEET NO.
94		COOK	860	58
STA. 2200+00.00 TO STA. 2362+00.00		ILLINOIS FED. AID PROJECT		
FED. ROAD DIST. NO.		R-8		
* (1516.1, 1717 & 1818)		62694		

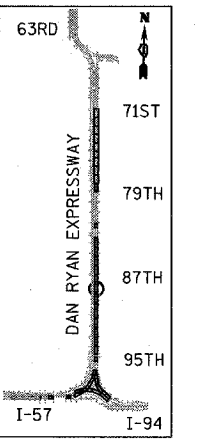


LEGEND:

- PAVEMENT REMOVAL
- PAVED SHOULDER REMOVAL
- PAVEMENT/SHOULDER REMOVAL, SPECIAL
- CHAIN LINK FENCE REMOVAL
- CONCRETE BARRIER/GUARDRAIL REMOVAL
- TREE REMOVAL (UNITS) (NO UNIT SHOWN = 6)
- SOIL BORING LOCATIONS
- LIGHT POLE FOUNDATION REMOVAL (SEE EXISTING ELECTRICAL PLANS)

- (+XX.XX) MAINLINE # STATION/OFFSET
- (XX.XXRT) RAMP # STATION/OFFSET

- NOTES:**
- ALL STATION/OFFSET/RADIUS CALLOUTS MEASURED TO EDGE OF PAVEMENT UNLESS OTHERWISE NOTED.
 - EXACT LOCATIONS OF EXISTING PIERS/ABUTMENTS TO BE FIELD VERIFIED



SCALE: 1" = 20'-0"
SHEET 17 OF 41

REVISIONS	
NAME	DATE

ILLINOIS DEPARTMENT OF TRANSPORTATION
F.A.I. 94 (DAN RYAN EXPRESSWAY)
EXISTING AND PROPOSED PLAN
NB 87th STREET EXIT RAMP
AND RETAINING WALL #5
 NB I-94 STA. 2247+00.00 TO 2253+00.00
 SCALE: 1"=20'
 DATE: MARCH 18, 2005
 DRAWN BY: MPG
 CHECKED BY: JPM

TYLIN INTERNATIONAL