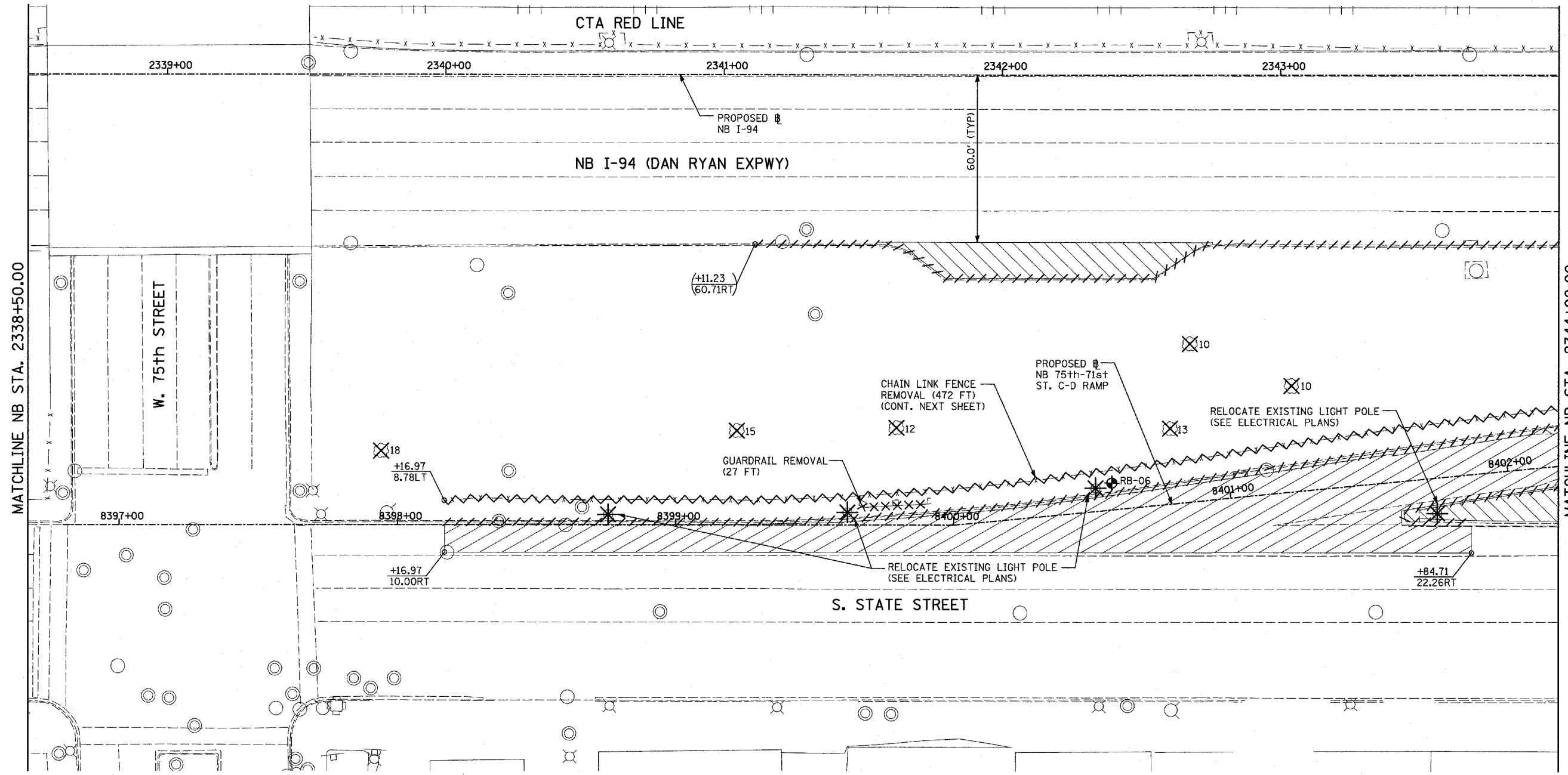
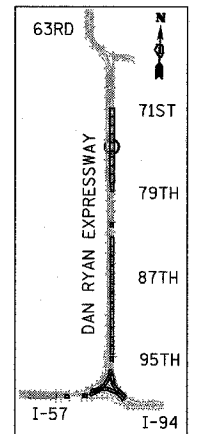


| F.A.I. RTE. | SECTION | COUNTY | TOTAL SHEETS | SHEET NO. |
|---------------------------|---------|---------------------------|--------------|-----------|
| 94 | | COOK | 860 | 73 |
| STA. 2200+00.00 | | TO STA. 2362+00.00 | | |
| FED. ROAD DIST. NO. | | ILLINOIS FED. AID PROJECT | | |
| (1516.1, 1717 & 1818) R-8 | | 62694 | | |

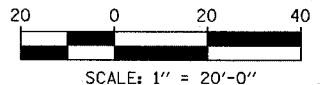


MATCHLINE NB STA. 2344+00.00

MATCHLINE NB STA. 2338+50.00



LOCATION MAP



LEGEND:

- PAVEMENT REMOVAL
- PAVED SHOULDER REMOVAL
- PAVEMENT/SHOULDER REMOVAL, SPECIAL
- COMB CONC CURB & GUTTER REMOVAL
- CHAIN LINK FENCE REMOVAL
- CONCRETE BARRIER/GUARDRAIL REMOVAL
- TREE REMOVAL (UNITS) (NO UNIT SHOWN = <6)
- SOIL BORING LOCATIONS
- LIGHT POLE FOUNDATION REMOVAL (SEE EXISTING ELECTRICAL PLANS)

- (+XX.XX) MAINLINE # STATION/OFFSET
- (XX.XXRT) STATION/OFFSET
- +XX.XX RAMP #
- XX.XXRT STATION/OFFSET

NOTES:

- ALL STATION/OFFSET/RADIUS CALLOUTS MEASURED TO EDGE OF PAVEMENT UNLESS OTHERWISE NOTED.
- EXACT LOCATIONS OF EXISTING PIERS/ABUTMENTS TO BE FIELD VERIFIED

TYLIN INTERNATIONAL

| REVISIONS | |
|-----------|------|
| NAME | DATE |
| | |
| | |
| | |
| | |
| | |
| | |
| | |
| | |
| | |
| | |

ILLINOIS DEPARTMENT OF TRANSPORTATION
 F.A.I. 94 (DAN RYAN EXPRESSWAY)
EXISTING PLAN
 NB 75th TO 71st STREET C-D RAMP
 NB I-94 STA. 2338+50.00 TO 2344+00.00
 SCALE: 1"=20'
 DATE: MARCH 18, 2005
 DRAWN BY: MPG
 CHECKED BY: JPM

03/25/2005 10:00:58 AM