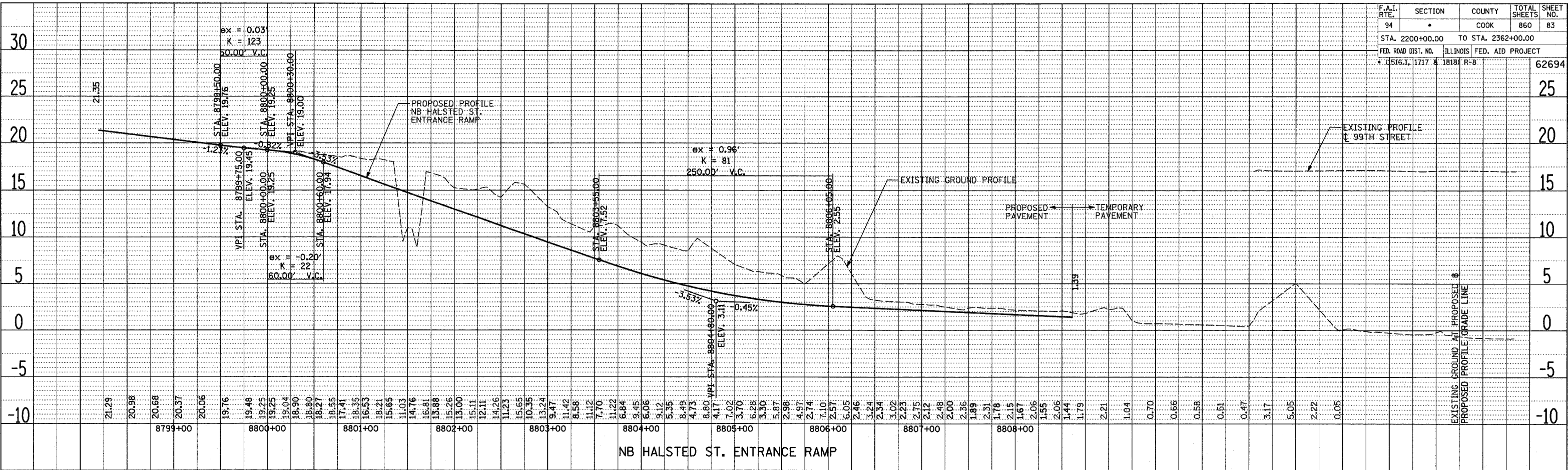
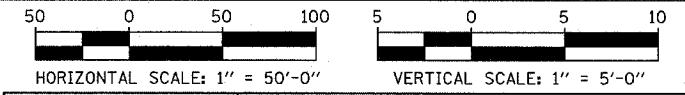
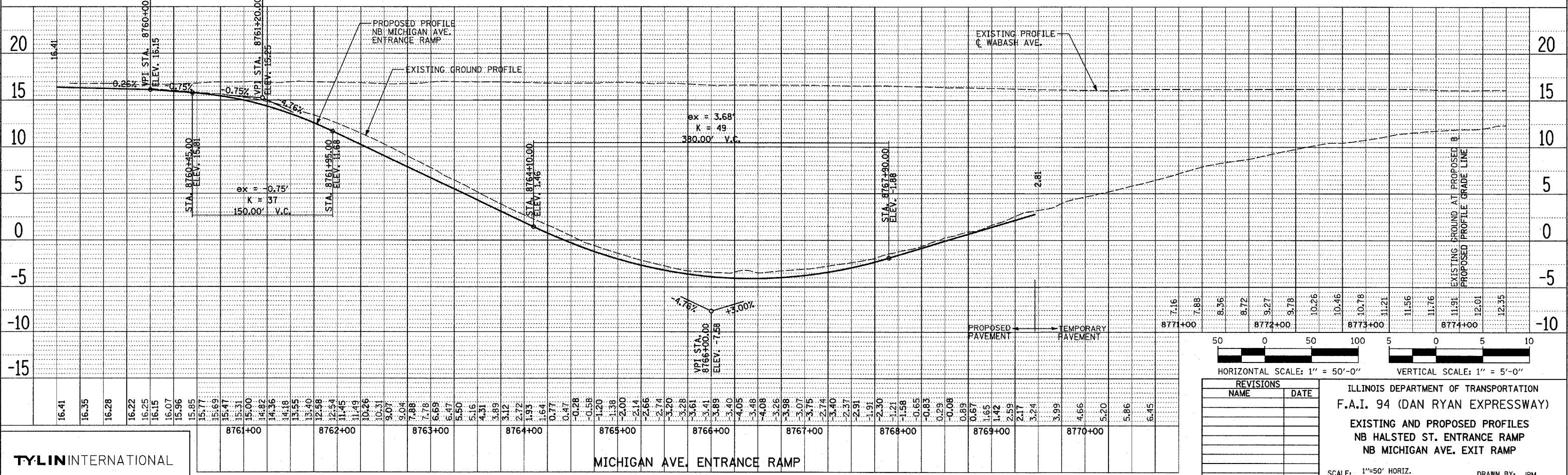


DATE: \_\_\_\_\_  
 BY: \_\_\_\_\_  
 SURVEYED \_\_\_\_\_  
 ALIGNED \_\_\_\_\_  
 CHECKED \_\_\_\_\_  
 RT. OF WAY CHECKED \_\_\_\_\_  
 CAD FILE NAME \_\_\_\_\_



F.A.I. RTE.	SECTION	COUNTY	TOTAL SHEETS	SHEET NO.
94	*	COOK	860	83
STA. 2200+00.00 TO STA. 2362+00.00				
FED. ROAD DIST. NO.		ILLINOIS	FED. AID PROJECT	
* (516.1, 1717 & 1818)		R-8		62694

DATE: \_\_\_\_\_  
 BY: \_\_\_\_\_  
 SURVEYED \_\_\_\_\_  
 ALIGNED \_\_\_\_\_  
 CHECKED \_\_\_\_\_  
 RT. OF WAY CHECKED \_\_\_\_\_  
 CAD FILE NAME \_\_\_\_\_



REVISIONS	
NAME	DATE

ILLINOIS DEPARTMENT OF TRANSPORTATION  
 F.A.I. 94 (DAN RYAN EXPRESSWAY)  
 EXISTING AND PROPOSED PROFILES  
 NB HALSTED ST. ENTRANCE RAMP  
 NB MICHIGAN AVE. EXIT RAMP  
 SCALE: 1"=50' HORIZ.  
 1"=5' VERT.  
 DATE: MARCH 18, 2005  
 DRAWN BY: JPM  
 CHECKED BY: MPG

TYLIN INTERNATIONAL

MICHIGAN AVE. ENTRANCE RAMP

03/28/2005 02:40:41 PM