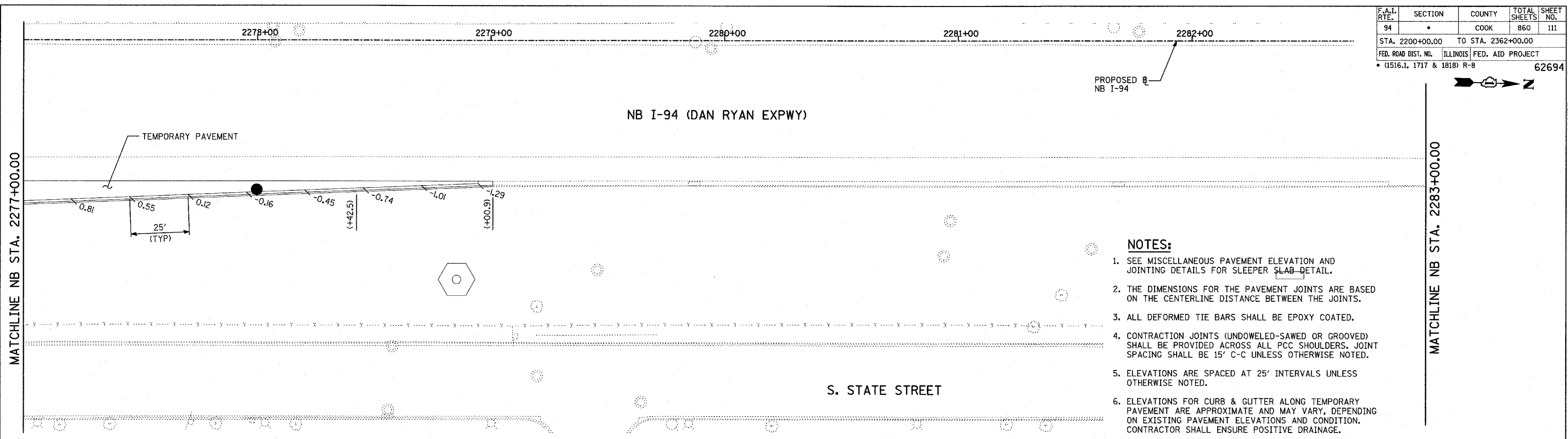
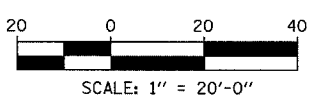
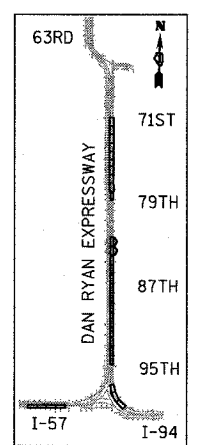
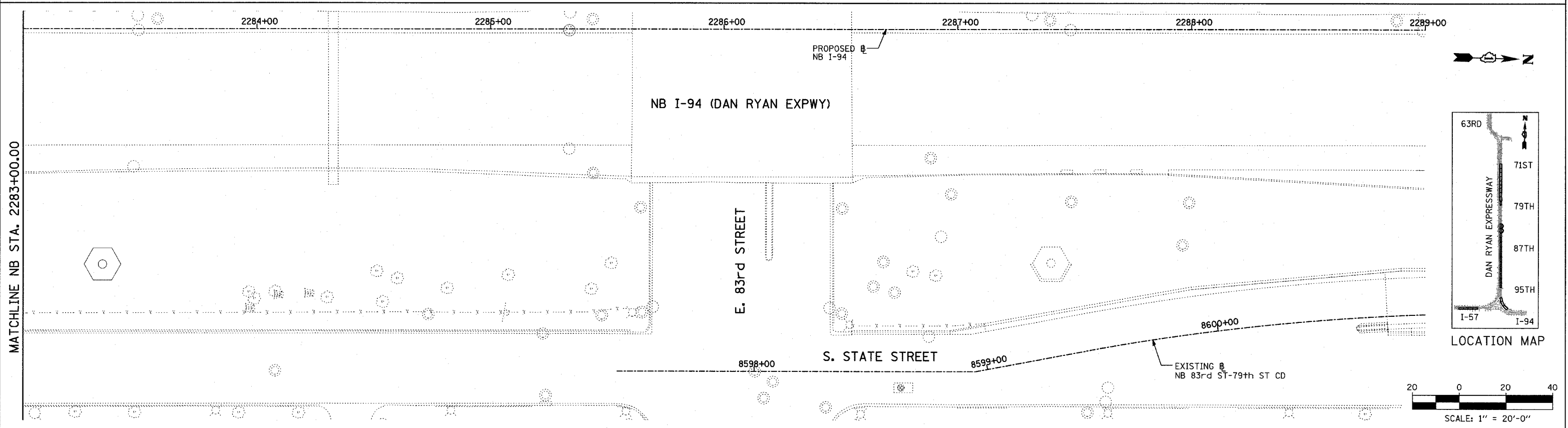


F.A.I. RTE.	SECTION	COUNTY	TOTAL SHEETS	SHEET NO.
94		COOK	860	111
STA. 2200+00.00 TO STA. 2362+00.00				
FED. ROAD DIST. NO. ILLINOIS		FED. AID PROJECT		
• (1516.1, 1717 & 1818) R-8		62694		



- NOTES:**
1. SEE MISCELLANEOUS PAVEMENT ELEVATION AND JOINTING DETAILS FOR SLEEPER SLAB DETAIL.
 2. THE DIMENSIONS FOR THE PAVEMENT JOINTS ARE BASED ON THE CENTERLINE DISTANCE BETWEEN THE JOINTS.
 3. ALL DEFORMED TIE BARS SHALL BE EPOXY COATED.
 4. CONTRACTION JOINTS (UNDOWELED-SAWED OR GROOVED) SHALL BE PROVIDED ACROSS ALL PCC SHOULDERS. JOINT SPACING SHALL BE 15' C-C UNLESS OTHERWISE NOTED.
 5. ELEVATIONS ARE SPACED AT 25' INTERVALS UNLESS OTHERWISE NOTED.
 6. ELEVATIONS FOR CURB & GUTTER ALONG TEMPORARY PAVEMENT ARE APPROXIMATE AND MAY VARY, DEPENDING ON EXISTING PAVEMENT ELEVATIONS AND CONDITION. CONTRACTOR SHALL ENSURE POSITIVE DRAINAGE.



LEGEND:
 (+XX.X) MAINLINE STATION
 +XX.X RAMP STATION

REVISIONS	
NAME	DATE

ILLINOIS DEPARTMENT OF TRANSPORTATION
 F.A.I. 94 (DAN RYAN EXPRESSWAY)
 PAVEMENT JOINTING AND ELEVATION PLAN
 NB I-94 STA. 2277+00.00 TO 2289+00.00
 SCALE: 1"=20'
 DATE: MARCH 18, 2005
 DRAWN BY: JPM
 CHECKED BY: JPM, MAG

TYLIN INTERNATIONAL

P:\02-27-2005\02-27-05-01-29-55.FM