

GENERAL NOTES:

SEE SPECIAL PROVISION TITLED TRAFFIC CONTROL AND PROTECTION (SPECIAL)
 SEE SPECIAL PROVISION TITLED TRAFFIC CONTROL AND PROTECTION (EXPRESSWAYS)
 SEE SPECIAL PROVISION TITLED TRAFFIC STAGING.

THE CONTRACTOR SHALL COORDINATE WITH THE CITY OF CHICAGO TO IMPLEMENT A NO PARKING RESTRICTION ALONG W. 99TH STREET, SOUTH WABASH AVENUE, AND STATE STREET WHILE TEMPORARY LANE OR ROADWAY CLOSURES ARE IN EFFECT. THE CONTRACTOR SHALL SCHEDULE THE WORK TO MINIMIZE THE LENGTH OF TIME PARKING IS RESTRICTED.

TEMPORARY CHAIN LINK FENCE (PORTABLE) SHALL BE PROVIDED ALONG FRONTAGE ROAD WORK ZONE LOCATIONS TO PROTECT THE PUBLIC AND DIRECT PEDESTRIAN TRAFFIC AROUND AND AWAY FROM THE WORK ZONES.

QUANTITY FOR TEMPORARY PAVEMENT MARKING - LINE 6" WAS ASSUMED EQUAL TO THE LENGTH OF TEMPORARY CONCRETE BARRIER LOCATED ONE FOOT OR LESS FROM THE EDGE OF TRAVELED WAY.

THE CONTRACTOR MUST COMPLETE BOTH JUNCTION CHAMBER #61 AND RELATED PIPE JACKING PRIOR TO IMPLEMENTING THE MULTI-LANE WEAVE SHOWN IN STAGE 1 OF THE MAINTENANCE OF TRAFFIC PLANS - SHEET 1B OF 10.

ALL FRONTAGE ROAD SIGNING AND TRAFFIC CONTROL DEVICES SHALL BE PAID FOR UNDER THE LUMP SUM FOR TRAFFIC CONTROL AND PROTECTION (SPECIAL).

W1-6 ARROW SIGNS SHALL BE MOUNTED ON EITHER TYPE III BARRICADES OR TEMPORARY CONCRETE BARRIER AS DEPICTED IN THE MAINTENANCE OF TRAFFIC PLANS.

ALL TEMPORARY PAVEMENT MARKINGS SHALL BE PAID FOR AS EPOXY PAVEMENT MARKING OF THE LINE TYPE AND WIDTH SPECIFIED UNLESS OTHERWISE NOTED IN THE MAINTENANCE OF TRAFFIC PLANS.

A TOTAL OF 10 CHANGEABLE MESSAGE SIGNS SHALL BE LOCATED ALONG THE MAINLINE AND NEAR RAMP CLOSURES FOR THE DURATION OF THIS CONTRACT. EXACT PLACEMENT OF THE SIGNS SHALL BE DETERMINED BY THE RESIDENT ENGINEER.

TRAFFIC CONTROL SURVEILLANCE WILL BE USED AT NIGHT AFTER THE CONTRACTOR HAS STOPPED WORK FOR THE DAY TO MONITOR ALL NON-EXPRESSWAY ROADS.

ANY RAISED REFLECTIVE PAVEMENT MARKERS THAT CONFLICT WITH THE TEMPORARY TRAFFIC LANES MUST HAVE THE REFLECTIVE LENSES REMOVED AS DIRECTED BY THE RESIDENT ENGINEER. MEASURE OF PAYMENT FOR REMOVAL OF REFLECTORS IS INCLUDED IN THE CONTRACT UNIT PRICE FOR TRAFFIC CONTROL AND PROTECTION (EXPRESSWAYS). REPLACEMENT REFLECTORS SHALL BE PAID FOR SEPARATELY.

CONSTRUCTION STAGING NOTES FOR EXPRESSWAY

PRESTAGE 1 - INSTALL TEMPORARY TRAFFIC CONTROL DEVICES - NIGHT TIME OPERATIONS

INSTALL RAMP CLOSURE ADVANCE INFORMATION SIGNS ON STAGE 1 RAMP CLOSURES A MINIMUM OF 2 WEEKS IN ADVANCE OF THE CLOSURE.

INSTALL TEMPORARY CONSTRUCTION SIGNS AHEAD OF WORK ZONE PER DISTRICT 1 DETAILS, ACCORDING TO THE PLANS.

COVER PERMANENT SIGNS AS NEEDED FOR STAGE 1 EXIT RAMP CLOSURES.

REMOVE EXISTING PAVEMENT MARKINGS STA. 192+70 TO 208+00 AND STA. 2028+95 TO 2041+88, AND REPLACE WITH EPOXY PAVEMENT MARKING.

REMOVE LENSES FROM RAISED REFLECTIVE PAVEMENT MARKERS WITHIN THE PREVIOUSLY SPECIFIED LIMITS.

INSTALL TEMPORARY TRAFFIC CONTROL DEVICES FOR STAGE 1 MULTI-LANE WEAVE AND SHIFT TRAFFIC.

INSTALL TEMPORARY TRAFFIC CONTROL DEVICES FOR REMAINING STAGE 1 CONSTRUCTION.

EXCAVATE EXISTING CURB AND GUTTER, BARRIER WALL, AND INSTALL TEMPORARY PAVEMENT PRIOR TO INSTALLING TEMPORARY CONCRETE BARRIER WALL.

INSTALL TEMPORARY CONCRETE BARRIER.

STAGE 1 - I-94 CONSTRUCTION

INSTALL EROSION CONTROL MEASURES.

BEGIN PAVEMENT, SHOULDER AND CURB & GUTTER REMOVAL ITEMS.

CONSTRUCT PROPOSED MEDIAN FOUNDATIONS FOR OVERHEAD STRUCTURES UTILIZING NIGHT TIME LANE CLOSURE OPERATIONS AND CONCRETE BARRIER REMOVAL.

CONSTRUCT REMAINING OVERHEAD AND CANTILEVER SIGN FOUNDATIONS.

INSTALL OVERHEAD SIGN STRUCTURES.

REMOVE EXISTING RETAINING WALLS.

CONSTRUCT PROPOSED RETAINING WALLS.

SUGGESTED SEQUENCE OF CONSTRUCTION FOR "STAGE 1" 16' RAMPS

CONSTRUCT CURB & GUTTER AND 2' SHOULDER AT EDGES OF RAMPS.

PLACE RAMP PAVEMENT.

INSTALL PAVEMENT MARKINGS.

PLACE TOPSOIL AND SEED.

COMPLETE CLEAN-UP AND PUNCH LIST.

COMPLETE REMAINING CONSTRUCTION WORK.

END CONSTRUCTION

RESTORE CONCRETE CURB AND GUTTER AND FURNISH TEMPORARY CONCRETE BARRIER.

RE-ESTABLISH PERMANENT PAVEMENT MARKING IN ACCORDANCE WITH DISTRICT 1 DETAILS UTILIZING NIGHT LANE CLOSURES. REPLACE LENSES ON RAISED REFLECTIVE PAVEMENT MARKERS WHERE REMOVED. SHIFT TRAFFIC.

PRESTAGE 2 - ADJUST TEMPORARY TRAFFIC CONTROL DEVICES - NIGHT TIME OPERATIONS

INSTALL RAMP CLOSURE ADVANCE INFORMATION SIGNS ON STAGE 2 RAMP CLOSURES A MINIMUM OF 1 WEEK IN ADVANCE OF THE CLOSURE.

REMOVE ALL CONSTRUCTION SIGNING AND TRAFFIC CONTROL MEASURES FROM STAGE 1 CLOSURES, INCLUDING THOSE ON THE FRONTAGE ROADS.

UNCOVER PERMANENT SIGNS AS NEEDED FOR OPEN RAMPS.

COVER PERMANENT SIGNS AS NEEDED FOR STAGE 2 EXIT RAMP CLOSURES.

INSTALL TEMPORARY TRAFFIC CONTROL DEVICES FOR STAGE 2 RAMP CLOSURES WHERE SHOWN.

EXCAVATE EXISTING CURB AND GUTTER, BARRIER WALL, AND INSTALL TEMPORARY PAVEMENT PRIOR TO INSTALLING TEMPORARY CONCRETE BARRIER WALL.

INSTALL TEMPORARY CONCRETE BARRIER.

STAGE 2 - I-94 CONSTRUCTION

INSTALL EROSION CONTROL MEASURES.

BEGIN PAVEMENT, SHOULDER AND CURB & GUTTER REMOVAL ITEMS.

CONSTRUCT PROPOSED OVERHEAD STRUCTURE FOUNDATIONS UTILIZING NIGHT TIME LANE CLOSURES AND CONCRETE BARRIER REMOVAL FOR MEDIAN FOUNDATIONS.

INSTALL OVERHEAD SIGN STRUCTURES.

REMOVE EXISTING RETAINING WALLS.

CONSTRUCT PROPOSED RETAINING WALLS.

SUGGESTED SEQUENCE OF CONSTRUCTION FOR "STAGE 2" 16' RAMPS

CONSTRUCT CURB & GUTTER AND 2' SHOULDER AT EDGES OF RAMPS.

PLACE RAMP PAVEMENT.

INSTALL PAVEMENT MARKINGS.

PLACE TOPSOIL AND SEED.

COMPLETE CLEAN-UP AND PUNCH LIST.

COMPLETE REMAINING CONSTRUCTION WORK.

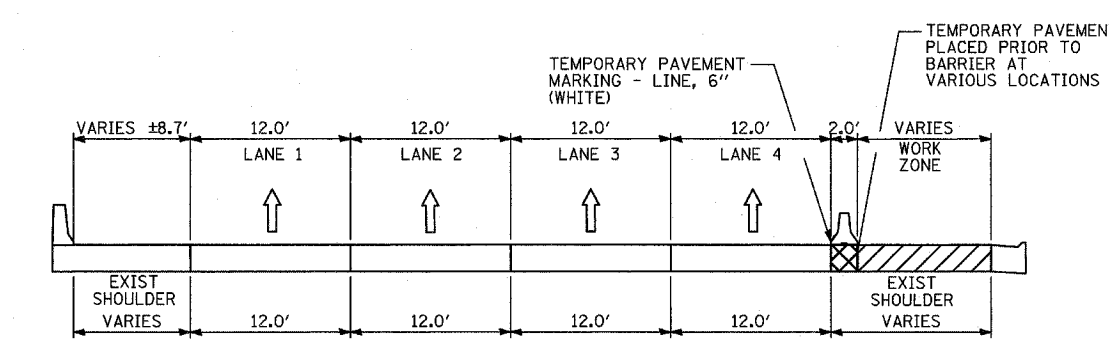
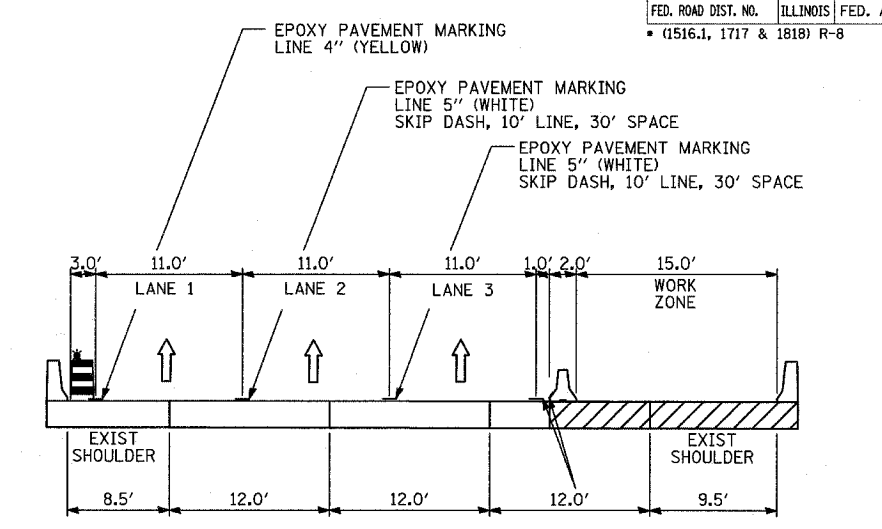
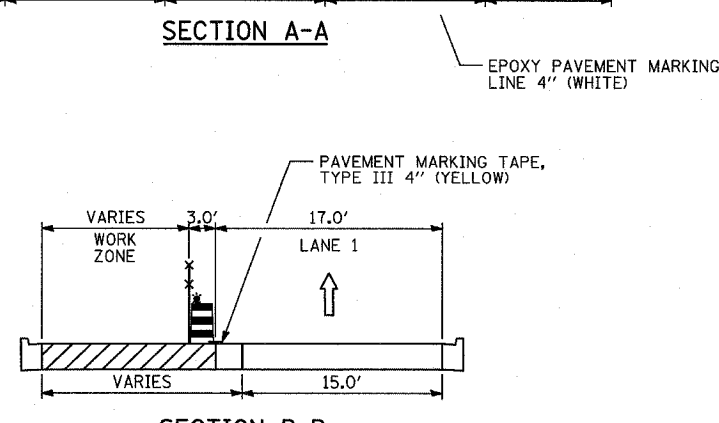
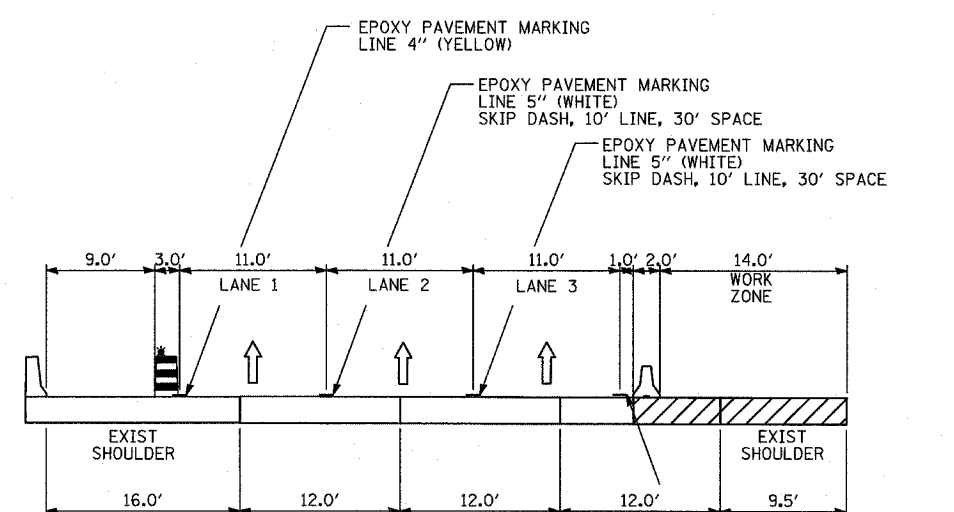
END CONSTRUCTION

RESTORE CONCRETE CURB AND GUTTER AND FURNISH TEMPORARY CONCRETE BARRIER.

ESTABLISH PERMANENT PAVEMENT MARKING IN ACCORDANCE WITH THE PLANS AND DISTRICT 1 DETAILS UTILIZING NIGHT TIME LANE CLOSURES.

REMOVE ALL CONSTRUCTION SIGNING AND TRAFFIC CONTROL MEASURES INCLUDING THOSE ON THE FRONTAGE ROADS

UNCOVER ALL PERMANENT SIGNS.



- LEGEND:**
- TEMPORARY CONCRETE BARRIER (WITH REFLECTORS ON TOP AND SIDE FACING TRAFFIC)
 - TRAFFIC MOVEMENT
 - DRUM WITH MONO-DIRECTIONAL STEADY BURNING LIGHT
 - SINGLE-FACE CONCRETE BARRIER, 32"
 - TEMPORARY CHAIN LINK FENCE (PORTABLE)
 - WORK ZONE
- REFER TO MOT PLAN SHEETS FOR LOCATIONS OF TYPICAL SECTIONS

REVISIONS	
NAME	DATE

ILLINOIS DEPARTMENT OF TRANSPORTATION
 F.A.I. 94 (DAN RYAN EXPRESSWAY)
 GENERAL NOTES
 CONSTRUCTION STAGING NOTES
 MAINTENANCE OF TRAFFIC DETAILS
 (1 OF 3)

SCALE: NO SCALE
 DATE: MARCH 18, 2005
 DRAWN BY: RTM
 CHECKED BY: JPA

F.A.I. RTE.	SECTION	COUNTY	TOTAL SHEETS	SHEET NO.
94	.	COOK	860	123
STA. 2200+00.00		TO STA. 2362+00.00		
FED. ROAD DIST. NO.	ILLINOIS	FED. AID PROJECT	62694	
* (151E, 1717 & 1818) R-8				