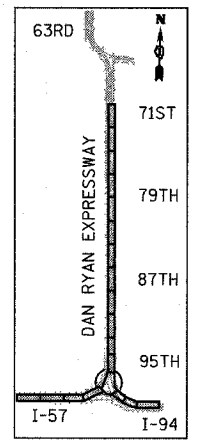
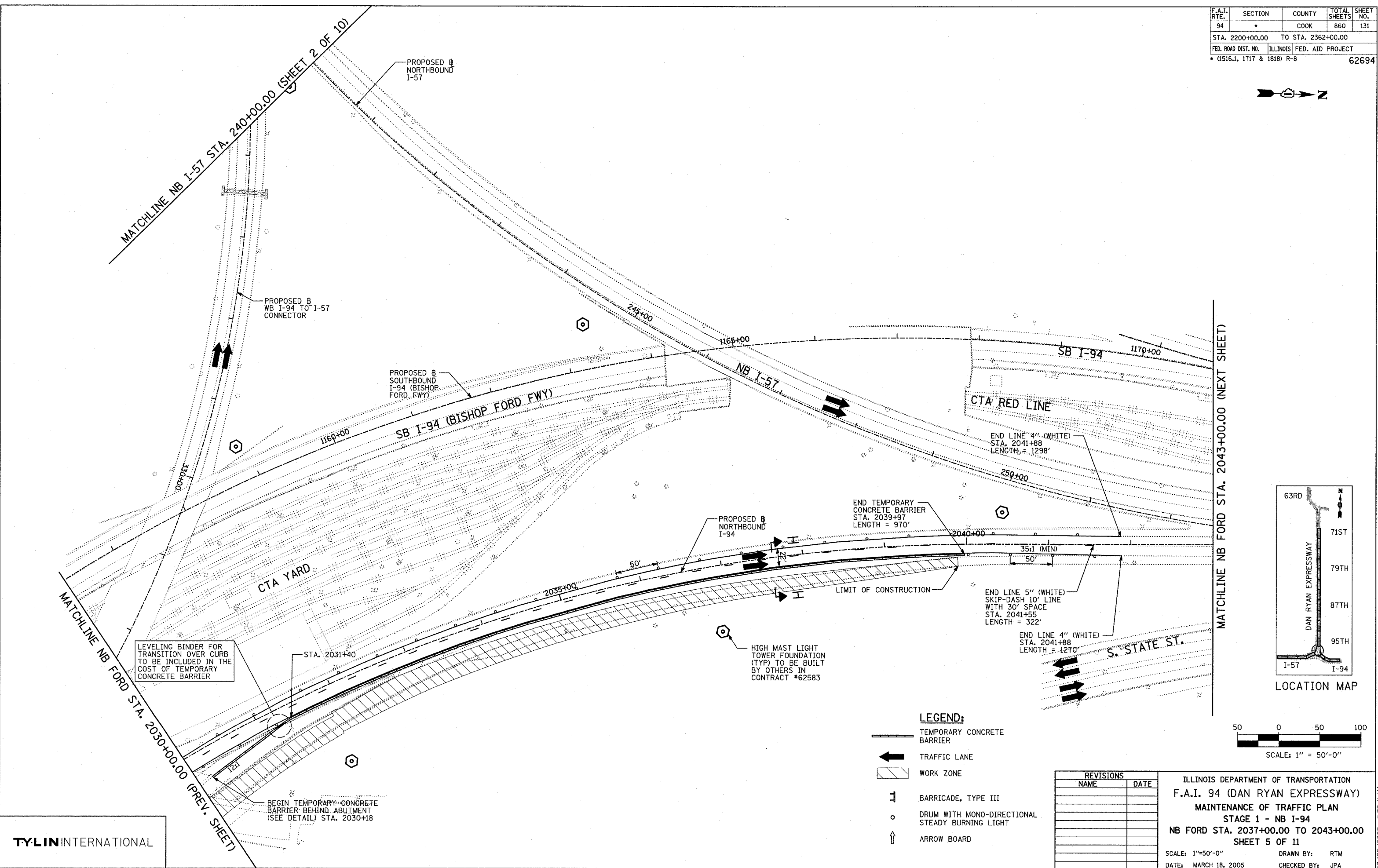
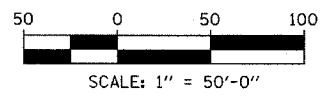


F.A.I. RTE.	SECTION	COUNTY	TOTAL SHEETS	SHEET NO.
94	*	COOK	860	131
STA. 2200+00.00		TO STA. 2362+00.00		
FED. ROAD DIST. NO.	ILLINOIS	FED. AID PROJECT		
* (1516.1, 1717 & 1818) R-8				62694



LOCATION MAP



- LEGEND:**
- TEMPORARY CONCRETE BARRIER
 - TRAFFIC LANE
 - WORK ZONE
 - BARRICADE, TYPE III
 - DRUM WITH MONO-DIRECTIONAL STEADY BURNING LIGHT
 - ARROW BOARD

REVISIONS	
NAME	DATE

ILLINOIS DEPARTMENT OF TRANSPORTATION
F.A.I. 94 (DAN RYAN EXPRESSWAY)
MAINTENANCE OF TRAFFIC PLAN
STAGE 1 - NB I-94
NB FORD STA. 2037+00.00 TO 2043+00.00
SHEET 5 OF 11

SCALE: 1"=50'-0"
 DATE: MARCH 18, 2005
 DRAWN BY: RTM
 CHECKED BY: JPA

TYLIN INTERNATIONAL

LEVELING BINDER FOR TRANSITION OVER CURB TO BE INCLUDED IN THE COST OF TEMPORARY CONCRETE BARRIER

BEGIN TEMPORARY CONCRETE BARRIER BEHIND ABUTMENT (SEE DETAIL) STA. 2030+18

HIGH MAST LIGHT TOWER FOUNDATION (TYP) TO BE BUILT BY OTHERS IN CONTRACT #62583

END LINE 5" (WHITE) SKIP-DASH 10' LINE WITH 30' SPACE STA. 2041+55 LENGTH = 322'

END LINE 4" (WHITE) STA. 2041+88 LENGTH = 1270'

END TEMPORARY CONCRETE BARRIER STA. 2039+97 LENGTH = 970'

END LINE 4" (WHITE) STA. 2041+88 LENGTH = 1298'

MATCHLINE NB I-57 STA. 240+00.00 (SHEET 2 OF 10)

MATCHLINE NB FORD STA. 2043+00.00 (NEXT SHEET)

MATCHLINE NB FORD STA. 2037+00.00 (PREV. SHEET)