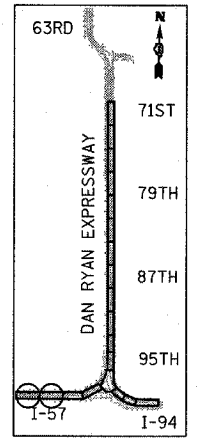
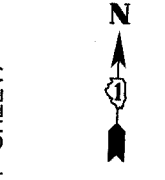
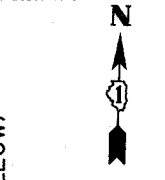
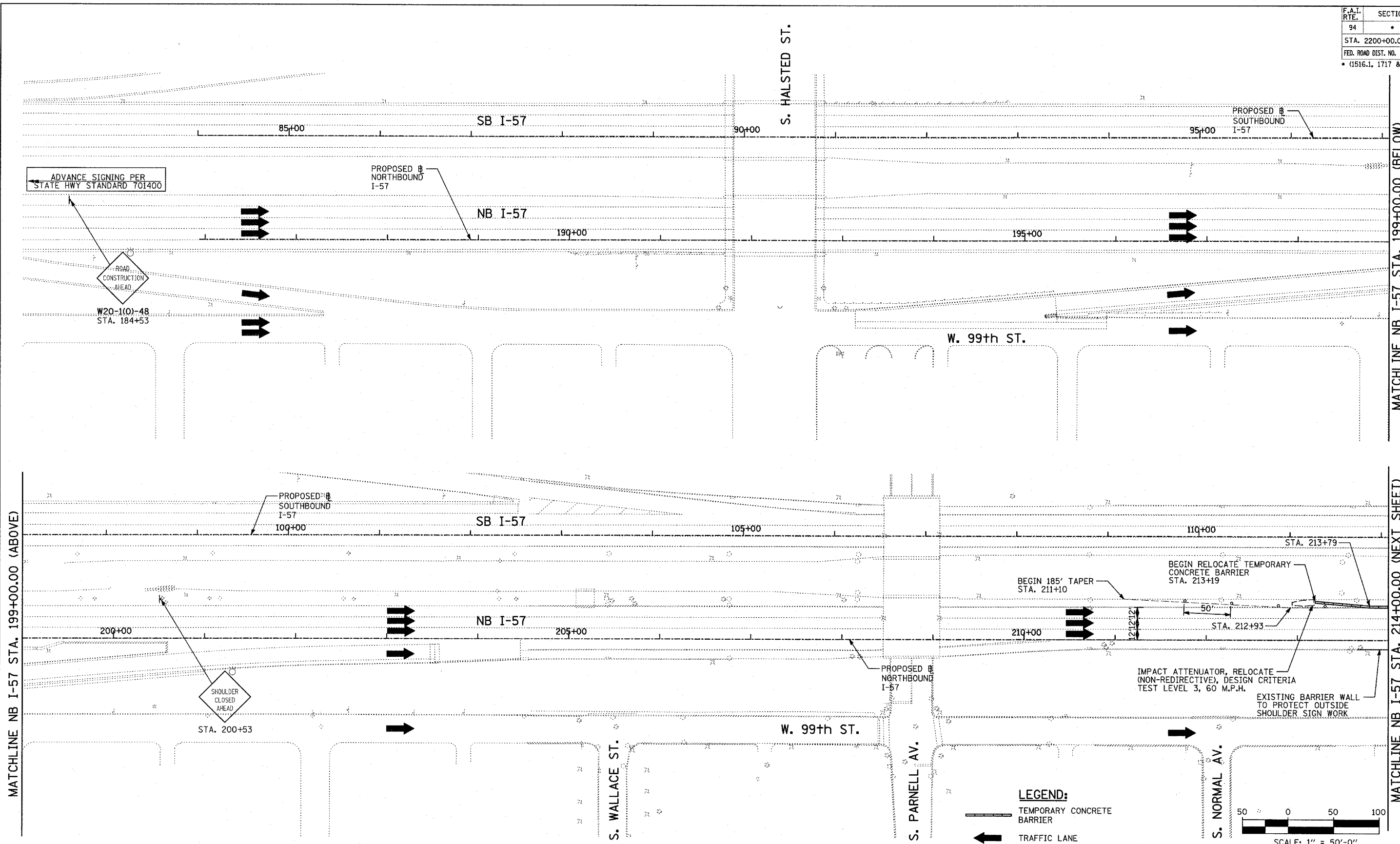
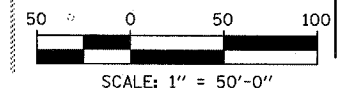


|                             |         |                           |              |           |
|-----------------------------|---------|---------------------------|--------------|-----------|
| F.A.I. RTE.                 | SECTION | COUNTY                    | TOTAL SHEETS | SHEET NO. |
| 94                          |         | COOK                      | 860          | 137       |
| STA. 2200+00.00             |         | TO STA. 2362+00.00        |              |           |
| FED. ROAD DIST. NO.         |         | ILLINOIS FED. AID PROJECT |              |           |
| * (1516.1, 1717 & 1818) R-8 |         | 62694                     |              |           |



LOCATION MAP

- LEGEND:**
- TEMPORARY CONCRETE BARRIER
  - TRAFFIC LANE
  - WORK ZONE
  - BARRICADE, TYPE III
  - DRUM WITH MONO-DIRECTIONAL STEADY BURNING LIGHT
  - ARROW BOARD



| REVISIONS |      |
|-----------|------|
| NAME      | DATE |
|           |      |
|           |      |
|           |      |
|           |      |
|           |      |
|           |      |
|           |      |
|           |      |
|           |      |
|           |      |

ILLINOIS DEPARTMENT OF TRANSPORTATION  
F.A.I. 94 (DAN RYAN EXPRESSWAY)  
MAINTENANCE OF TRAFFIC PLAN  
STAGE 2 - NB I-94  
NB I-57 STA. 184+00.00 TO 214+00.00  
SHEET 1 OF 8

SCALE: 1"=50'-0"  
DATE: MARCH 18, 2005

DRAWN BY: RTM  
CHECKED BY: JPA

TYLIN INTERNATIONAL

03/25/2005 11:44:41 AM