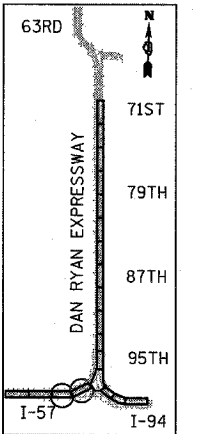
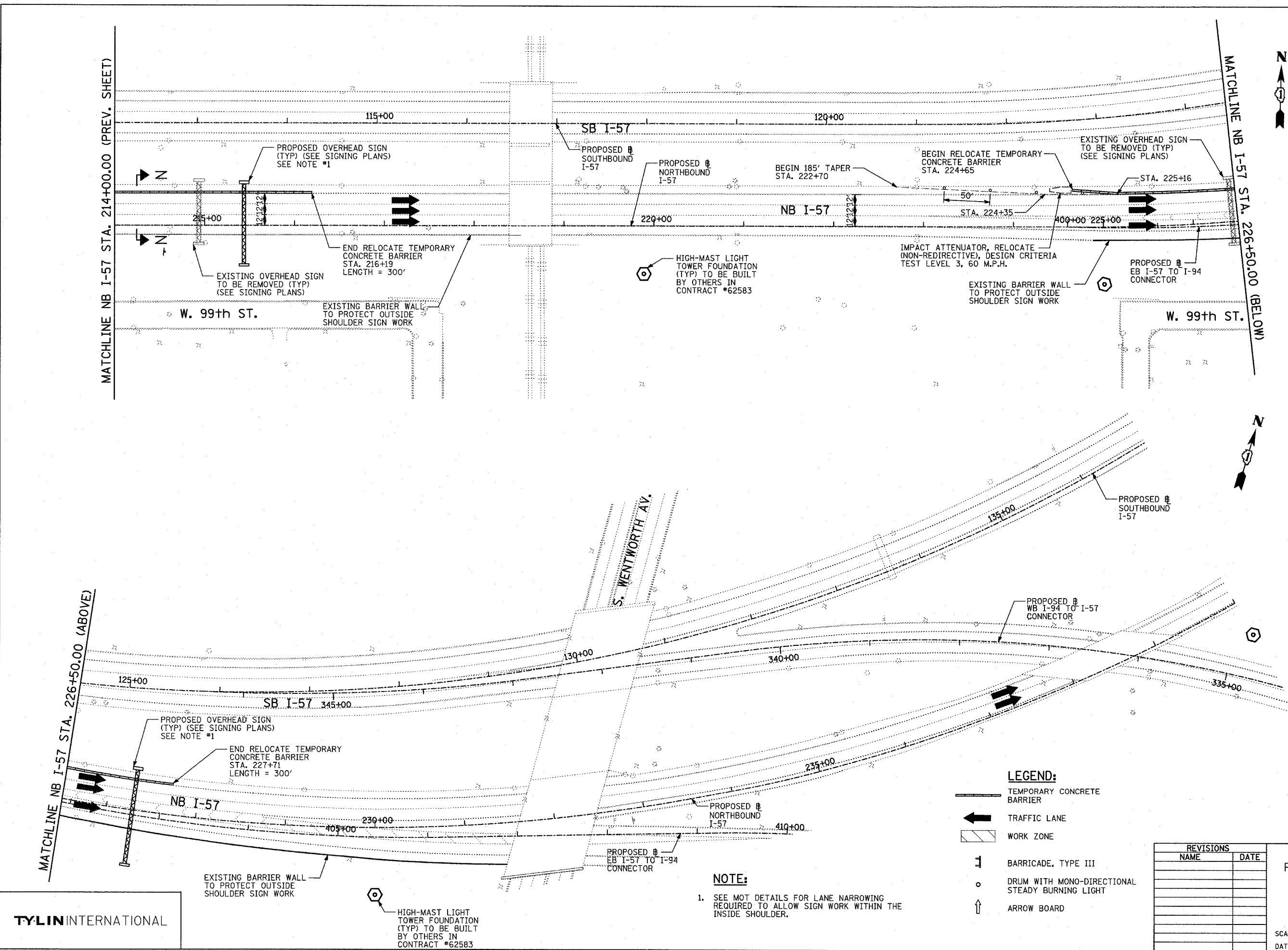
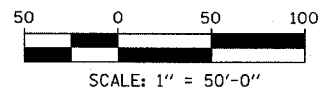


F.A.I. RTE.	SECTION	COUNTY	TOTAL SHEETS	SHEET NO.
94		COOK	860	138
STA. 2200+00.00 TO STA. 2362+00.00				
FED. ROAD DIST. NO. ILLINOIS		FED. AID PROJECT		
* (1516.1, 1717 & 1818) R-8		62694		



LOCATION MAP



- LEGEND:**
- TEMPORARY CONCRETE BARRIER
 - TRAFFIC LANE
 - WORK ZONE
 - BARRICADE, TYPE III
 - DRUM WITH MONO-DIRECTIONAL STEADY BURNING LIGHT
 - ARROW BOARD

NOTE:

- SEE MOT DETAILS FOR LANE NARROWING REQUIRED TO ALLOW SIGN WORK WITHIN THE INSIDE SHOULDER.

REVISIONS	
NAME	DATE

ILLINOIS DEPARTMENT OF TRANSPORTATION
 F.A.I. 94 (DAN RYAN EXPRESSWAY)
 MAINTENANCE OF TRAFFIC PLAN
 STAGE 2 - NB I-94
 NB I-57 STA. 214+00.00 TO 240+00.00
 SHEET 2 OF 8

SCALE: 1"=50'-0" DRAWN BY: RTM
 DATE: MARCH 18, 2005 CHECKED BY: JPA

TYLIN INTERNATIONAL