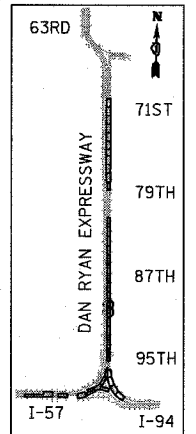
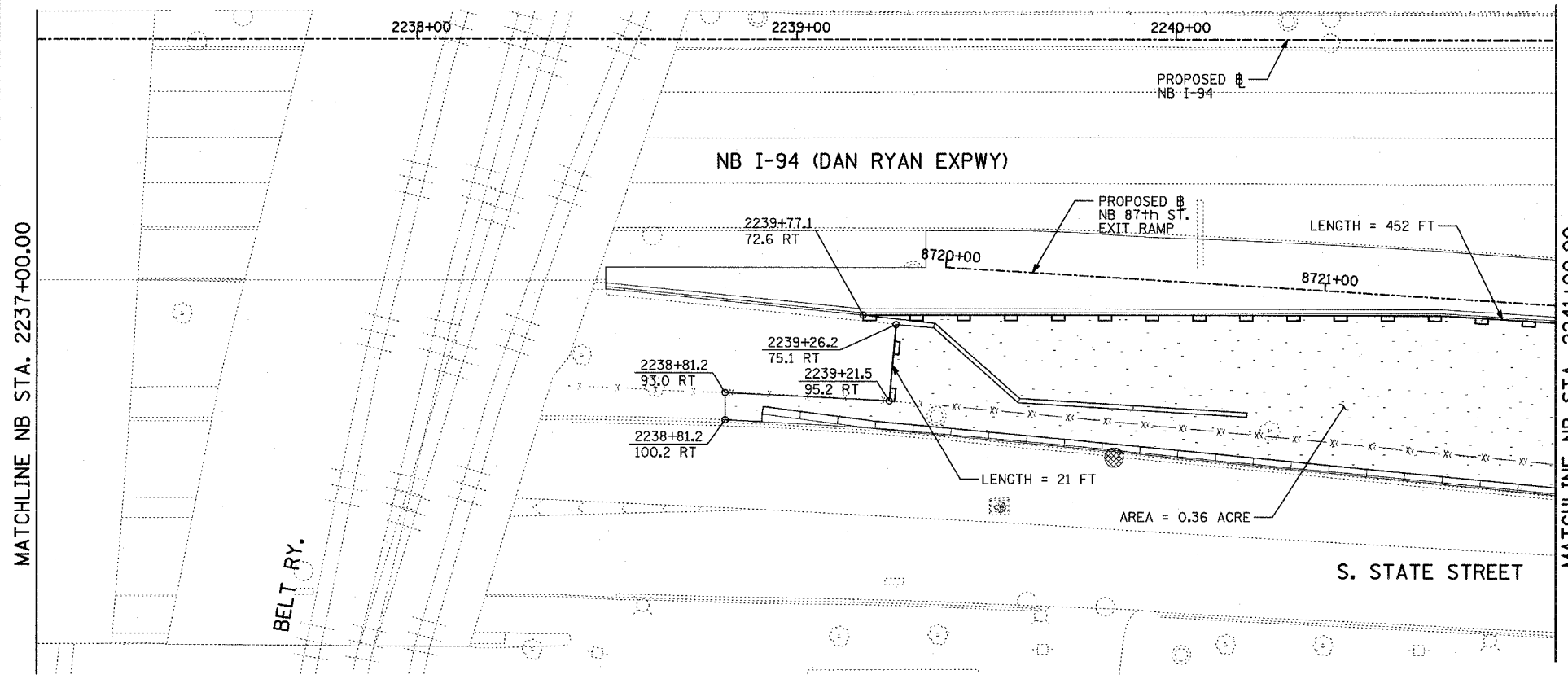
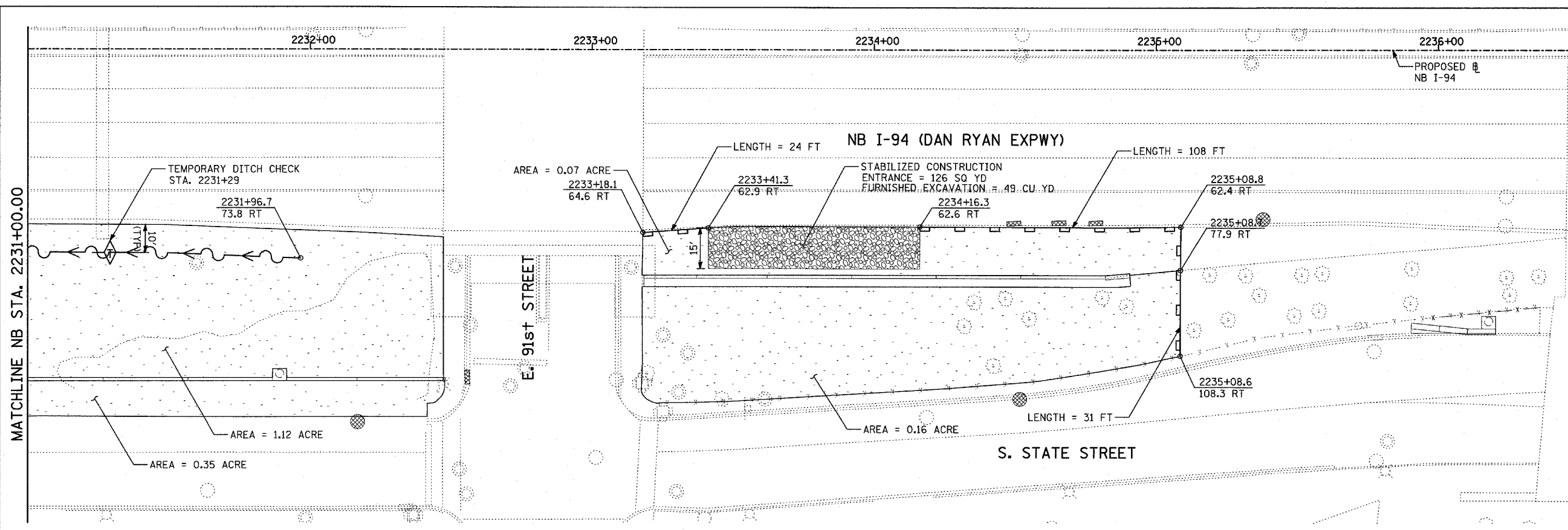
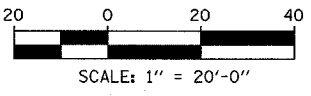


F.A.I. RTE.	SECTION	COUNTY	TOTAL SHEETS	SHEET NO.
94		COOK	860	170
STA. 2200+00.00 TO STA. 2362+00.00				
FED. ROAD DIST. NO. ILLINOIS		FED. AID PROJECT		
• (1516.1, 1717 & 1818) R-8		62694		



LOCATION MAP

- LEGEND:**
- TEMPORARY EROSION CONTROL SEEDING
 - PERIMETER EROSION BARRIER
 - INLET FILTER, TO BE INSTALLED IN OFF PROJECT DRAINAGE STRUCTURES ACCEPTING STORMWATER RUNOFF
 - TEMPORARY FENCE
 - TEMPORARY DITCH
 - TEMPORARY DITCH CHECK
 - TEMPORARY FENCE FOR TREE PROTECTION (15 FEET PER SIDE = 60 FEET TOTAL)



TYLIN INTERNATIONAL

REVISIONS	
NAME	DATE

ILLINOIS DEPARTMENT OF TRANSPORTATION
 F.A.I. 94 (DAN RYAN EXPRESSWAY)
 EROSION CONTROL PLAN
 NB 87th STREET EXIT RAMP
 NB I-94 STA. 2231+00.00 TO 2241+00.00

SCALE: 1"=20'
 DATE: MARCH 18, 2005

DRAWN BY: JJS
 CHECKED BY: JPM, MAG

03/25/2005 01:32:48 PM