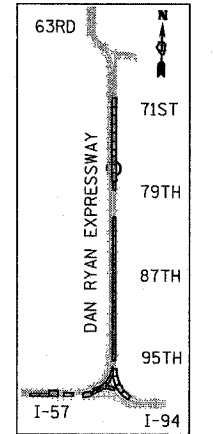
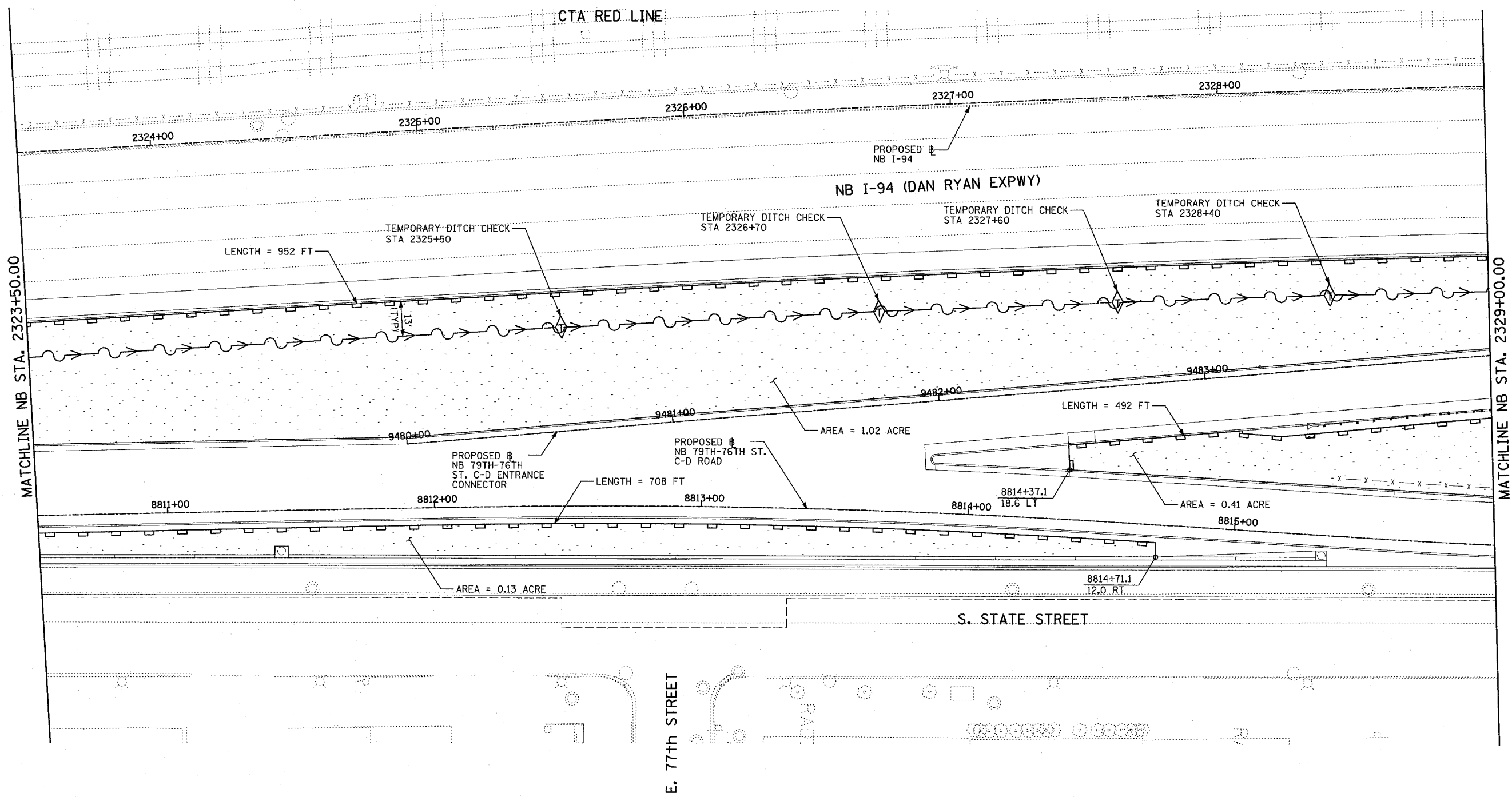
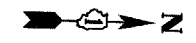
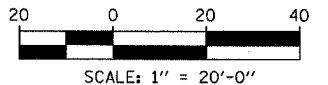


F.A.I. RTE.	SECTION	COUNTY	TOTAL SHEETS	SHEET NO.
94		COOK	860	178
STA. 2200+00.00		TO STA. 2362+00.00		
FED. ROAD DIST. NO.	ILLINOIS	FED. AID PROJECT		
(1516.1, 1717 & 1818) R-8		62694		



LOCATION MAP



- LEGEND:**
- TEMPORARY EROSION CONTROL SEEDING
  - PERIMETER EROSION BARRIER
  - INLET FILTER, TO BE INSTALLED IN OFF PROJECT DRAINAGE STRUCTURES ACCEPTING STORMWATER RUNOFF
  - TEMPORARY FENCE
  - TEMPORARY DITCH
  - TEMPORARY DITCH CHECK
  - TEMPORARY FENCE FOR TREE PROTECTION (15 FEET PER SIDE = 60 FEET TOTAL)

REVISIONS	
NAME	DATE

ILLINOIS DEPARTMENT OF TRANSPORTATION  
 F.A.I. 94 (DAN RYAN EXPRESSWAY)  
 EROSION CONTROL PLAN  
 NB 79th - 76th ST. C-D ROAD  
 NB I-94 STA. 2323+50.00 TO 2329+00.00

SCALE: 1"=20'  
 DATE: MARCH 18, 2005

DRAWN BY: JJS  
 CHECKED BY: JPM, MAG

**TYLIN** INTERNATIONAL

03/25/2005 01:33:32 PM  
 P:\0227 2V road\01\erect\erect\0530.dgn