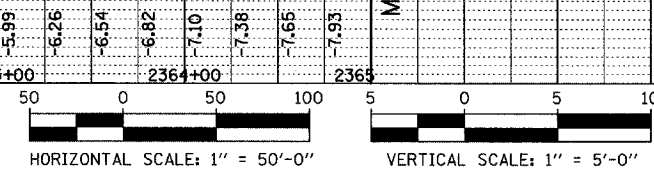
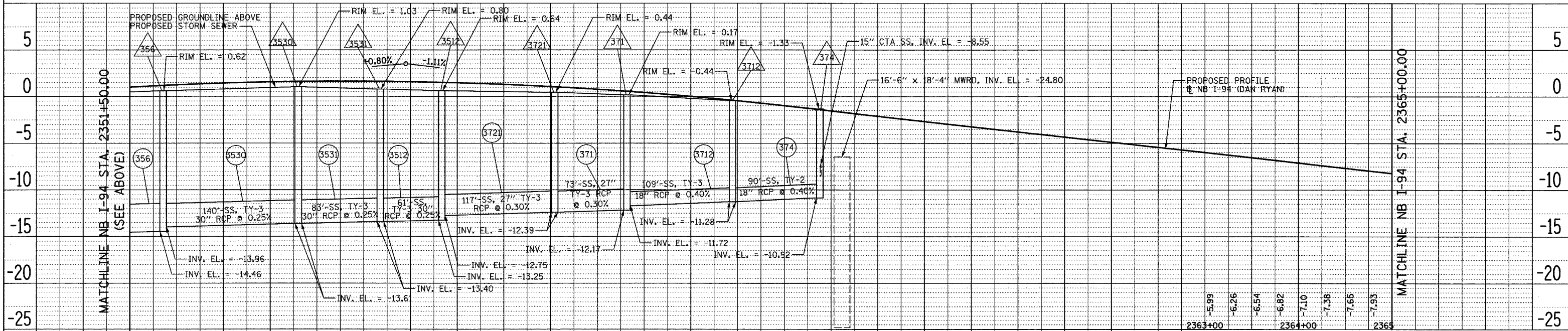
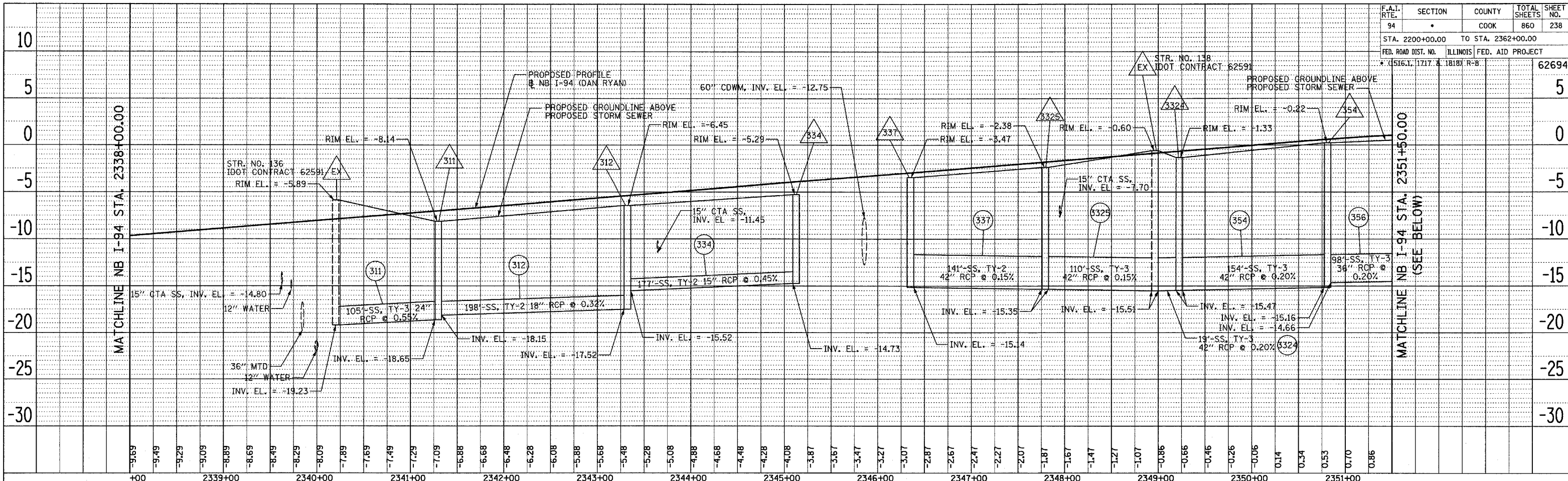


DATE _____
 BY _____
 SURVEYED _____
 ALIGNED _____
 CHECKED _____
 REVISION _____
 DATE _____

DATE _____
 BY _____
 SURVEYED _____
 ALIGNED _____
 CHECKED _____
 REVISION _____
 DATE _____

F.A.I. RTE.	SECTION	COUNTY	TOTAL SHEETS	SHEET NO.
94	•	COOK	860	238
STA. 2200+00.00		TO STA. 2362+00.00		
FED. ROAD DIST. NO.		ILLINOIS FED. AID PROJECT		
• (S16.L 1717 & 1818) R-8		62694		



TYLIN INTERNATIONAL

1.36
1.44
1.51
1.57
1.61
1.63
1.65
1.64
1.62
1.59
1.54
1.48
1.40
1.30
1.19
1.07
0.93
0.78
0.61
0.43
0.23
0.01
-0.21
-0.46
-0.72
-0.99
-1.27
-1.54
-1.82
-2.10
-2.38
-2.65
-2.93
-3.21
-3.49
-3.77
-4.04
-4.32
-4.60
-4.88
-5.15
-5.43
-5.71

REVISIONS	NAME	DATE

ILLINOIS DEPARTMENT OF TRANSPORTATION
 F.A.I. 94 (DAN RYAN EXPRESSWAY)
DRAINAGE PROFILES
 NB I-94
 STA. 2338+00.00 TO 2365+00.00

SCALE: 1 1/2" = 50' HORIZ.
 1 1/2" = 5' VERT.

DATE: MARCH 18, 2005

DRAWN BY: NSB
 CHECKED BY: DA