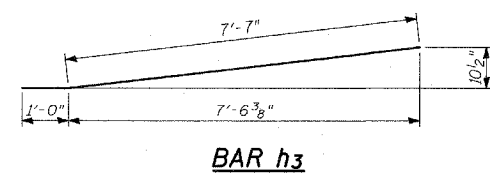
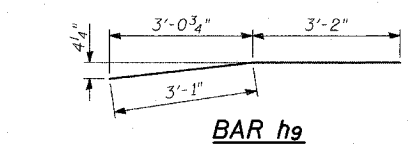
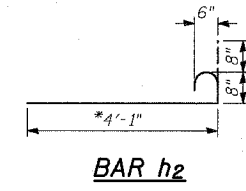
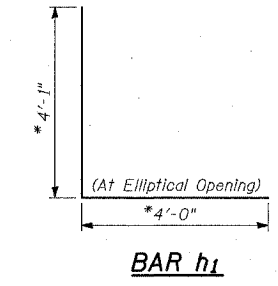
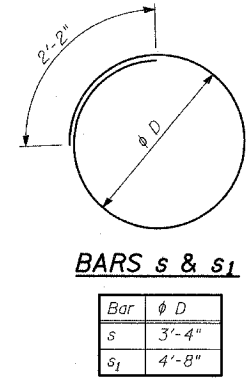
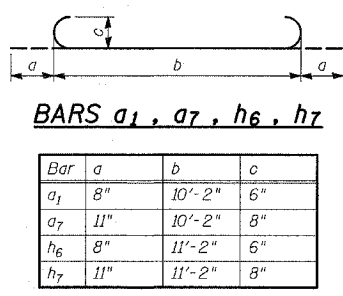
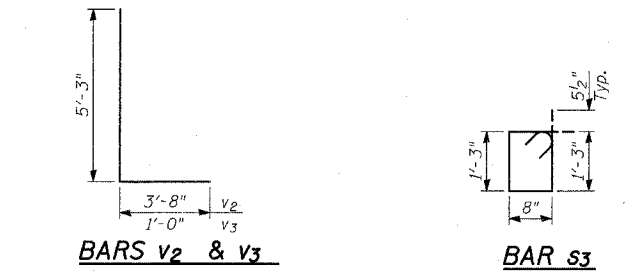
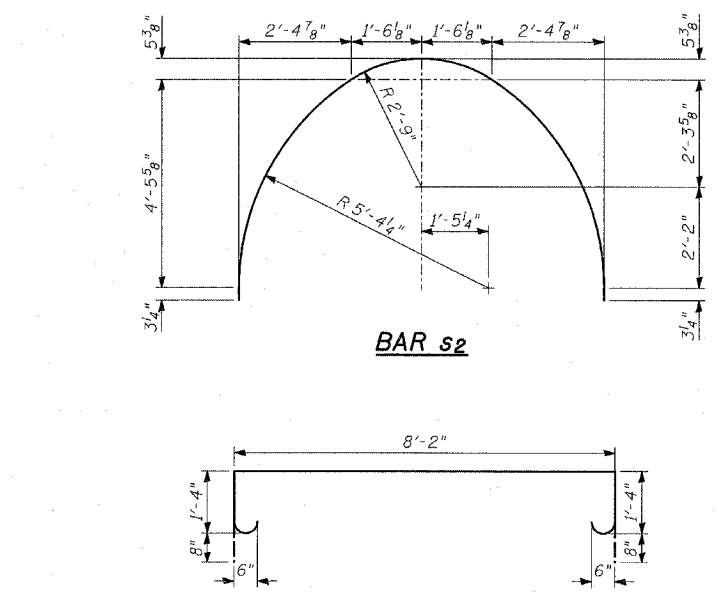
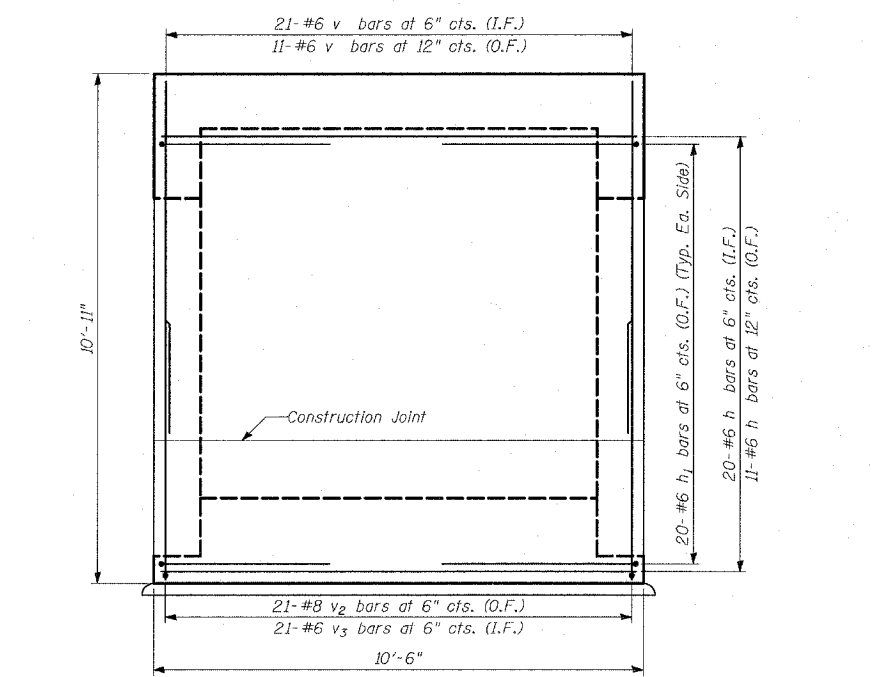
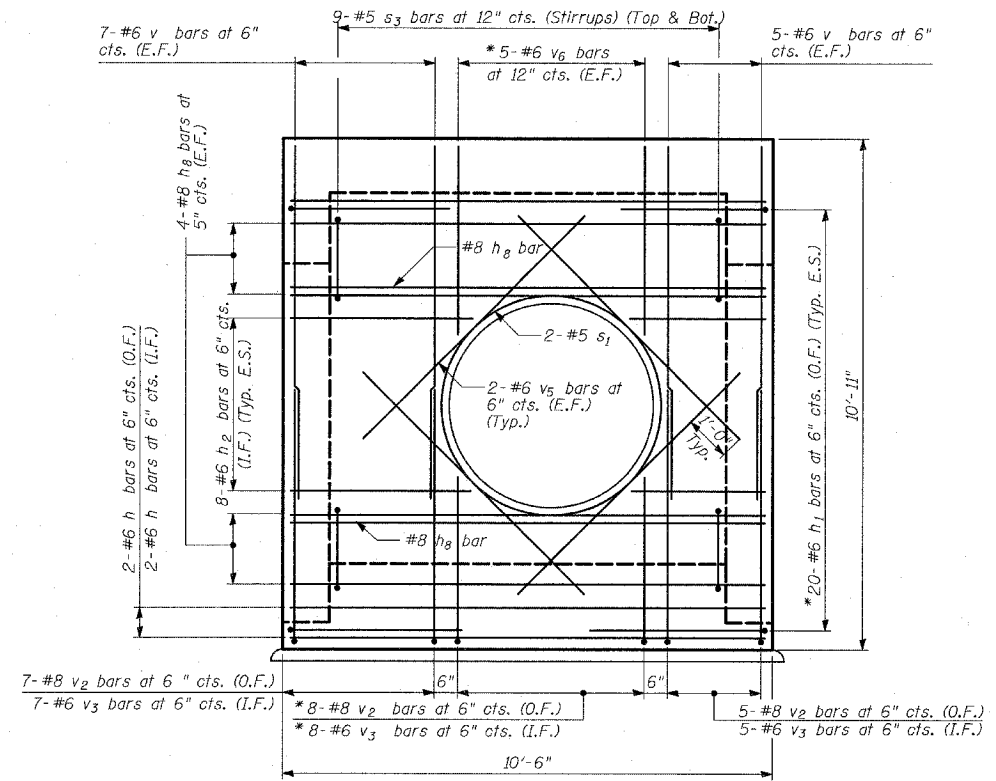
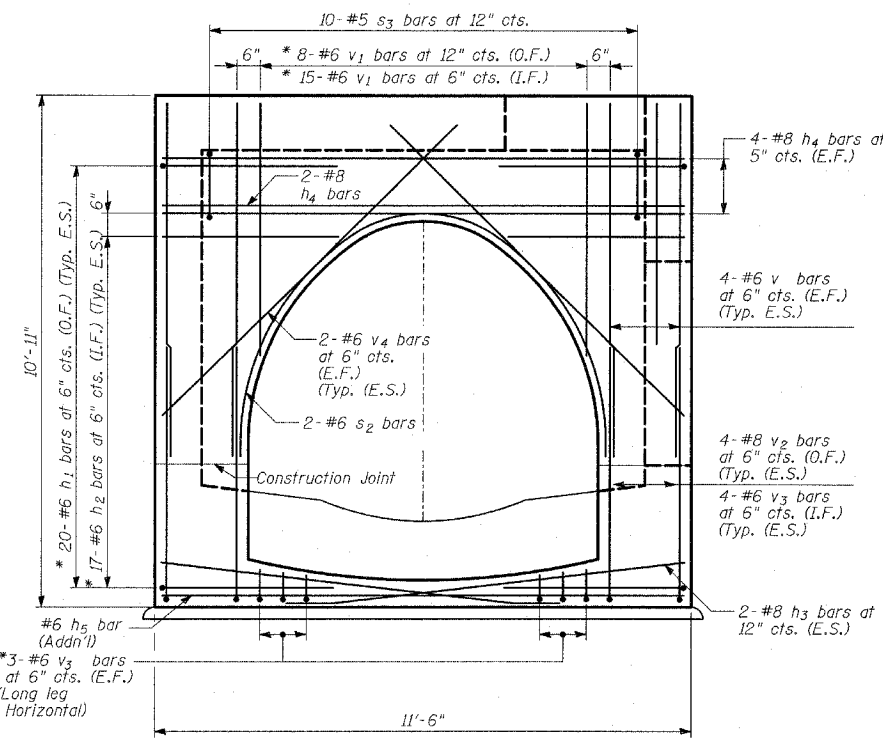


BILL OF MATERIAL
JUNCTION CHAMBER 5

Bar	No.	Size	Length	Shape
a	23	#6	10'-2"	—
a ₁	23	#6	11'-6"	⌋
a ₂	4	#8	10'-2"	—
a ₃	4	#5	2'-10"	—
a ₄	12	#5	5'-4"	—
a ₅	16	#6	12'-2"	⌋
a ₆	11	#5	8'-2"	—
a ₇	4	#8	12'-0"	⌋
h	35	#6	10'-2"	—
h ₁	80	#6	8'-1"	L
h ₂	84	#6	5'-5"	⌋
h ₃	8	#8	8'-7"	—
h ₄	24	#8	11'-2"	—
h ₅	23	#6	11'-2"	—
h ₆	35	#6	12'-6"	⌋
h ₇	4	#8	13'-0"	⌋
h ₈	18	#8	10'-2"	—
h ₉	18	#5	6'-3"	—
v	88	#6	7'-8"	—
v ₁	46	#6	5'-5"	—
v ₂	57	#8	8'-11"	L
v ₃	81	#6	6'-3"	L
v ₄	16	#6	8'-10"	—
v ₅	16	#6	6'-9"	—
v ₆	10	#6	4'-1"	—
s	2	#5	12'-8"	○
s ₁	2	#5	16'-10"	○
s ₂	4	#6	14'-4"	⌋
s ₃	38	#5	4'-9"	⌋
Reinforcement Bars			Pound	10,610
Concrete Structures			Cu. Yard	22



NOTES:

- All dimensions and elevations shall be field verified prior to construction.
- Concrete pipe sizes shall be coordinated with openings provided into junction chamber before pouring concrete.
- Manhole Frame, Ladder Rungs, and any inserts installation shall be coordinated with Roadway Plans.
- Concrete cover for reinforcement steel to be 2" unless otherwise noted.
- All concrete edges shall be chamfered 1 inch.
- All lap splices marked on the drawings are minimum.
- Concrete Compressive Strength $f_c' = 3,500$ psi.
- Steel Yield Strength = 60,000 psi.
- Work this Sheet with Sheets 1 and 2 of 3.
- The Bill of Material is shown for reference only. See Sheet 1 of 3 for Pay Items.
- Cut bars to fit in field.

E.F. - denotes Each Face
E.S. - denotes Each Side
I.F. - denotes Inside Face
O.F. - denotes Outside Face

REVISIONS	
NAME	DATE

ILLINOIS DEPARTMENT OF TRANSPORTATION
F.A.I. 94 (DAN RYAN EXPRESSWAY)
JUNCTION CHAMBER 61
DETAILS 2

S.N. _____
SCALE: _____
DATE: MARCH 18, 2005

DESIGNED BY: TD, DJR
DRAWN BY: DJR
CHECKED BY: MI, TD