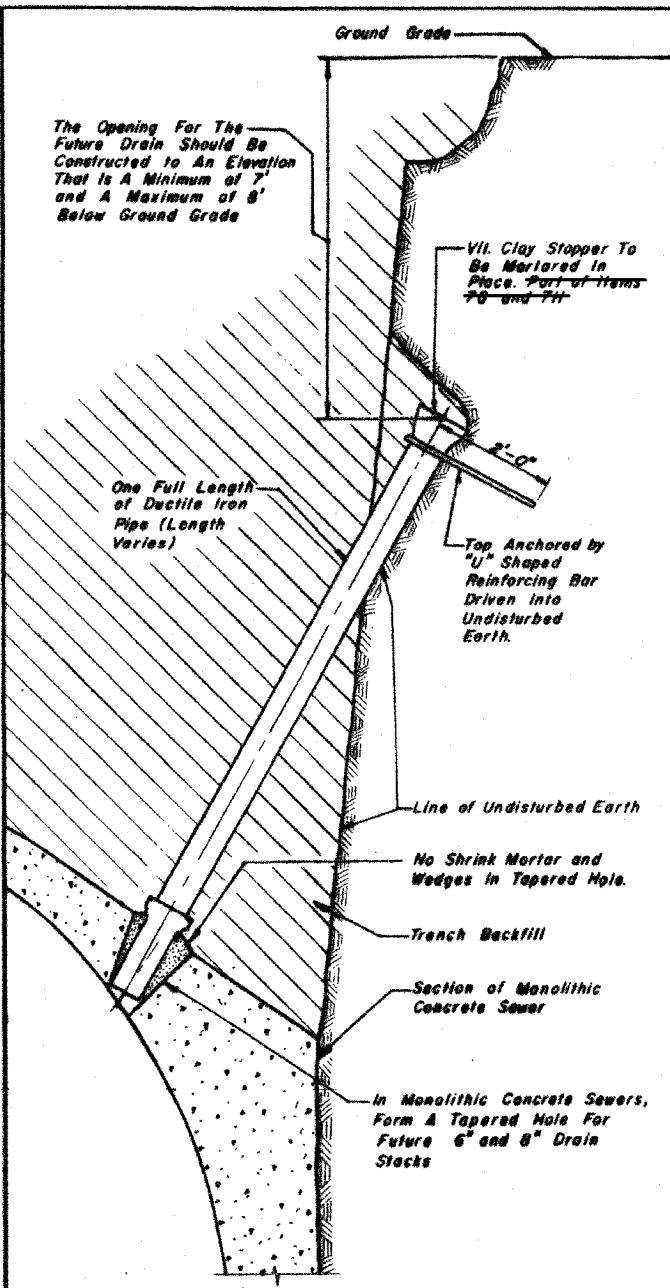
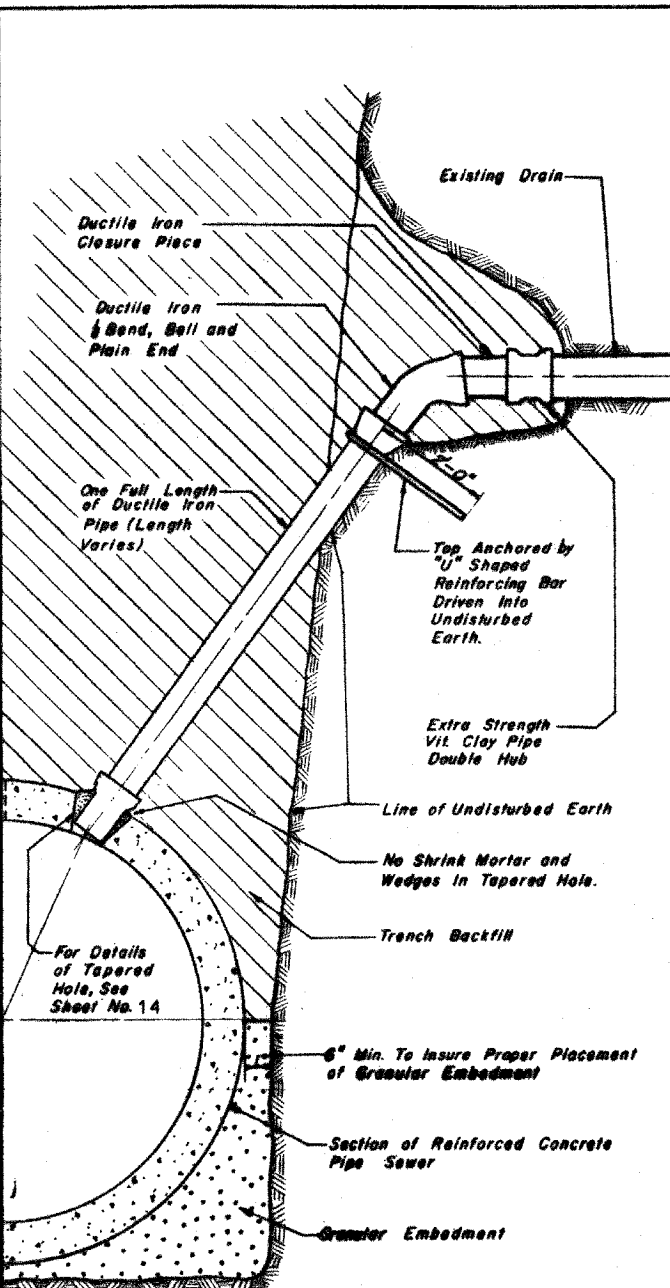


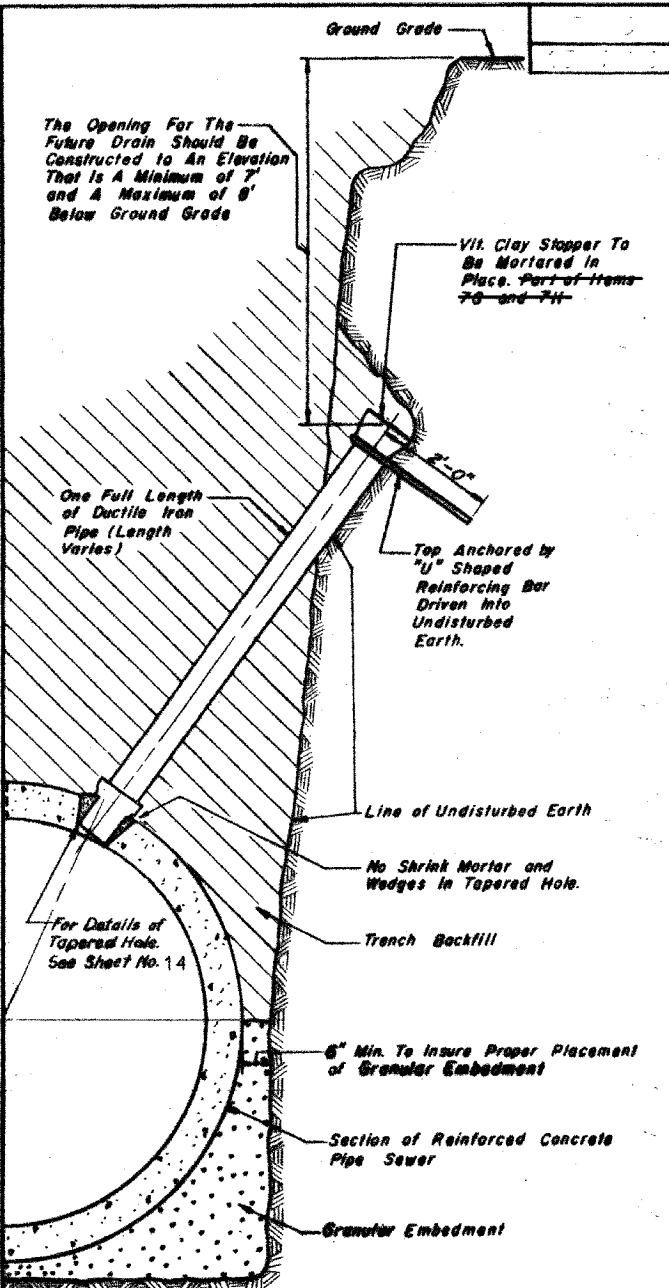
ELEVATION
TYPICAL DRAIN CONNECTIONS
FOR EXISTING DRAINS
Items 7G and 7H



ELEVATION
TYPICAL DRAIN STACKS
FOR FUTURE USE
Items 7G and 7H



ELEVATION
TYPICAL DRAIN CONNECTIONS
FOR EXISTING DRAINS
Items 7G and 7H



ELEVATION
TYPICAL DRAIN STACKS
FOR FUTURE USE
Items 7G and 7H

FOR MONOLITHIC CONCRETE SEWERS

FOR REINFORCED CONCRETE PIPE SEWERS

CITY OF CHICAGO

DEPARTMENT OF WATER MANAGEMENT
BUREAU OF ENGINEERING SERVICES

**DUCTILE IRON PIPE
DRAIN CONNECTIONS**

SCALE: NONE

CONTACT SHEET NO.

Notes:
Ductile Iron Pipe Must Be Bell End with Push-On Joints Conforming To ANSI Specifications A21.51 with Class 52 Thickness. Connections and Stacks Shown Shall Be Used For 6" and 8" Drains Only. No Additional Payment Will Be Made For the Use of Ductile Iron Drain Connections and Stacks, and All Costs For This Work Shall Be Included In the Price Bid For Items 7G and 7H. For Vitrified Clay Pipe Drain Connection and Drain Stack Construction, See Sheet No. 14.

DATE	DESCRIPTION
9/26/01	PRELIMINARY PLAN
	APPROVED PLAN

DRAWN BY Reproduction
DESIGNED BY _____
CHECKED BY _____

Form Sheet 1 2-00 (400)

NOTE: THESE DRAWINGS ARE FOR INFORMATIONAL PURPOSES ONLY. ALL REFERENCES TO PAY ITEMS OR PAY LIMITS SHOULD BE IGNORED. SEE SPECIAL PROVISIONS FOR PAY ITEMS.

TYLIN INTERNATIONAL

REVISIONS	
NAME	DATE
REVISED	04/15/05

ILLINOIS DEPARTMENT OF TRANSPORTATION
F.A.I. 94 (DAN RYAN EXPRESSWAY)

CITY OF CHICAGO
DEPARTMENT OF WATER MANAGEMENT
SEWER RELOCATION DETAIL
(SHEET 7 OF 9)

SCALE: NONE
DATE: MARCH 18, 2005

DRAWN BY: MB
CHECKED BY: MPG