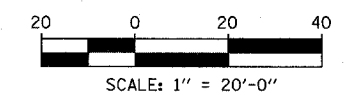


LOCATION MAP



PAVEMENT MARKING NOTES:

- PAVEMENT MARKINGS SHALL BE IN ACCORDANCE WITH IDOT DISTRICT ONE STANDARD TC-12. RAISED PAVEMENT MARKERS SHALL NOT BE INSTALLED, EXCEPT AS SHOWN ON THE PLANS.
- THE RESIDENT ENGINEER SHALL CONTACT JULIA FOX (847) 705-4151, EXPRESSWAY TRAFFIC CONTROL SUPERVISOR, PRIOR TO PLACING ANY PAVEMENT MARKINGS.

REVISIONS	
NAME	DATE

ILLINOIS DEPARTMENT OF TRANSPORTATION
 F.A.I. 94 (DAN RYAN EXPRESSWAY)
 PAVEMENT MARKING
 NB 75th TO 71st STREET C-D RAMP
 NB I-94 STA. 2366+00.00 TO 2371+50.00
 SCALE: 1"=20'
 DATE: MARCH 18, 2005
 DRAWN BY: TB
 CHECKED BY: MPG

TYLIN INTERNATIONAL

03/25/2005 01:37:49 PM