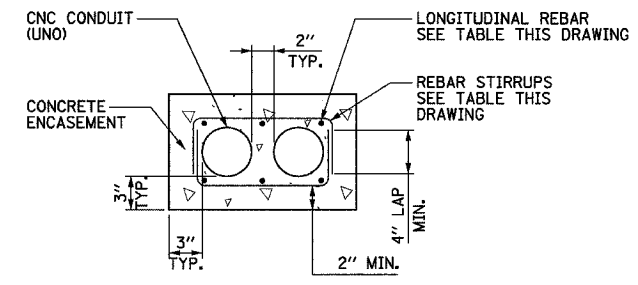
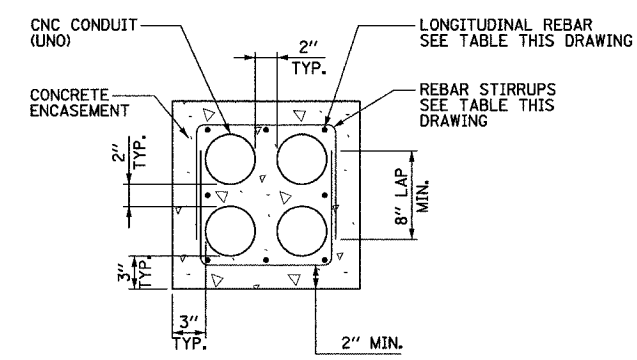


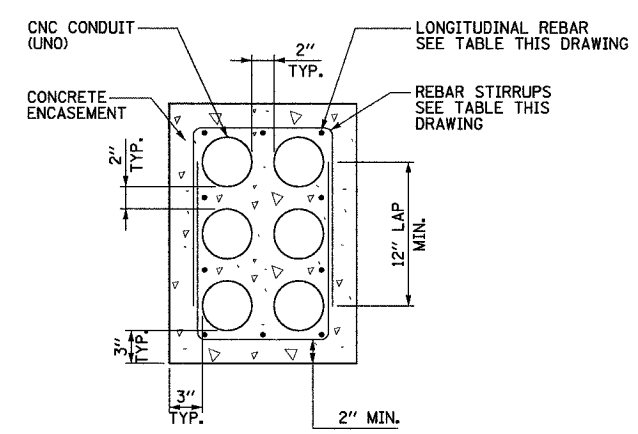
**1x1 DUCTBANK DETAIL-  
IN REINFORCED CONCRETE**  
NOT TO SCALE



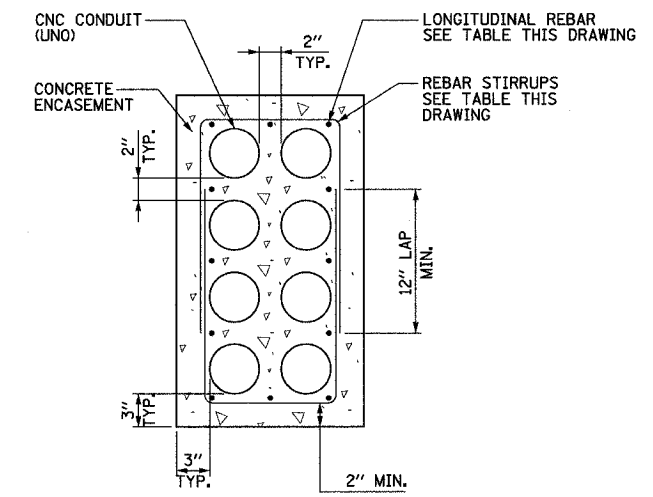
**2x1 DUCTBANK DETAIL-  
IN REINFORCED CONCRETE**  
NOT TO SCALE



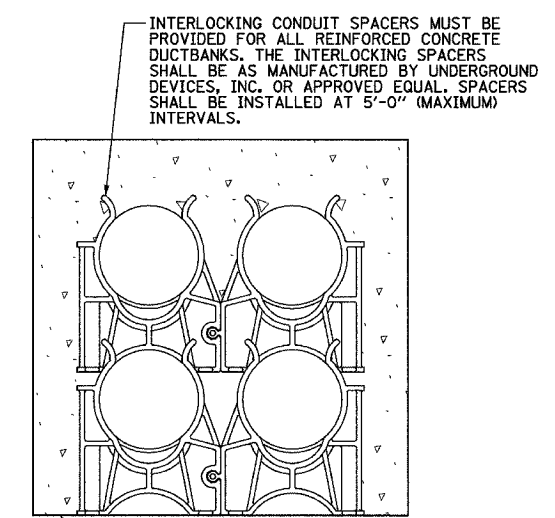
**2x2 DUCTBANK DETAIL-  
IN REINFORCED CONCRETE**  
NOT TO SCALE



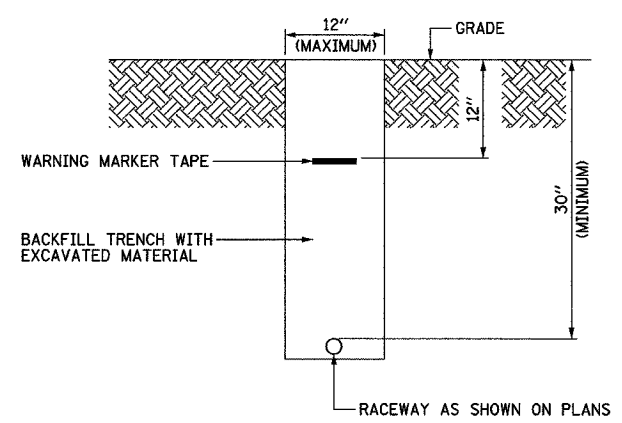
**2x3 DUCTBANK DETAIL-  
IN REINFORCED CONCRETE**  
NOT TO SCALE



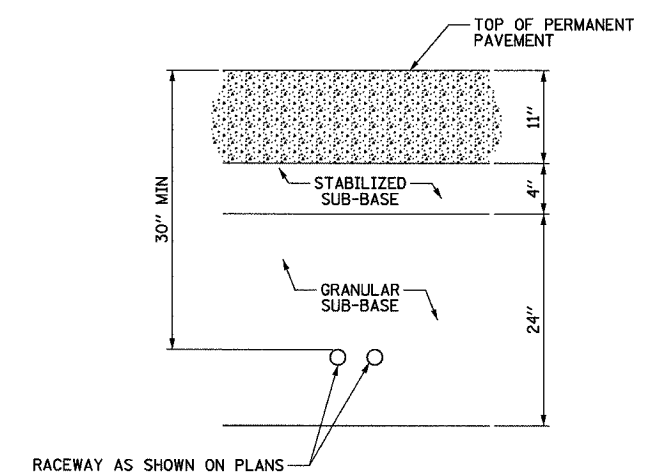
**2x4 DUCTBANK DETAIL-  
IN REINFORCED CONCRETE**  
NOT TO SCALE



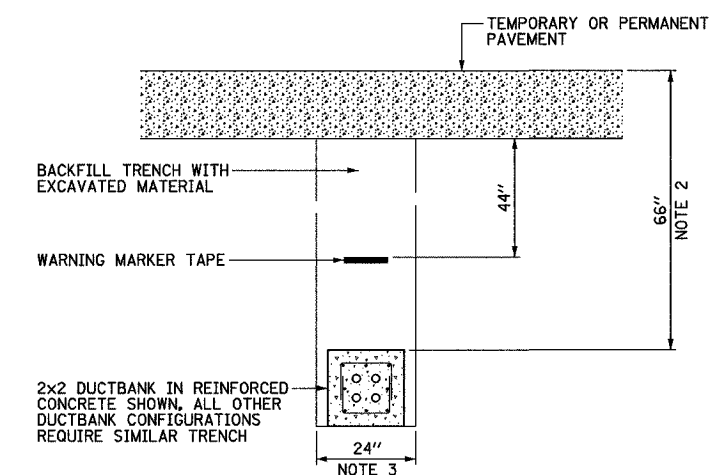
**INTERLOCKING CONDUIT SPACER DETAIL**  
NOT TO SCALE



**TYPICAL ELECTRICAL  
CONDUIT IN UNPAVED AREA**  
NOT TO SCALE



**TYPICAL SURVEILLANCE  
CONDUIT UNDER PERMANENT PAVEMENT**  
NOT TO SCALE



**TYPICAL ELECTRICAL  
DUCTBANK UNDER PAVEMENT**  
NOT TO SCALE

DUCTBANK REINFORCEMENT TABLE		
DUCTBANK CONCRETE CROSS-SECTIONAL AREA SQ. INCHES	LONGITUDINAL REBAR	REBAR STIRRUPS
	BARS	
LESS THAN 450	#4	#3 AT 12" SPACING
451 TO 650	#5	#3 AT 12" SPACING
GREATER THAN 651	#6	#3 AT 12" SPACING

17A/EI-102

ILLINOIS DEPARTMENT OF TRANSPORTATION  
F.A.I. 90/94 (DAN RYAN EXPRESSWAY)

**ELECTRICAL DUCTBANK DETAILS**

REVISIONS	
NAME	DATE

SCALE: NOT TO SCALE      DRAWN BY:  
DATE: MARCH 18, 2005      CHECKED BY:

3/24/2005 4:46:00 PM